



*PACIFIC AIR LINES*  
**TIMETABLE**

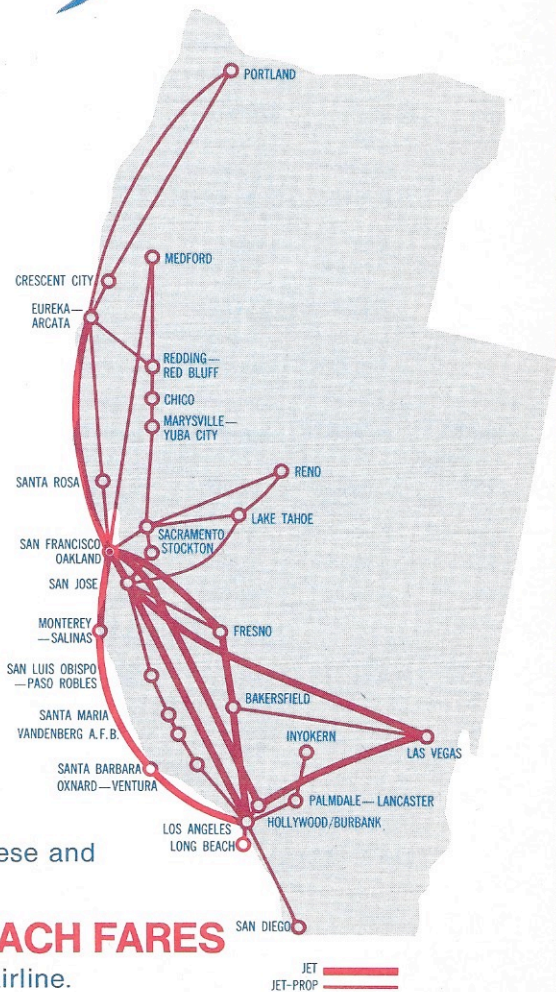
---

EFFECTIVE APRIL 30, 1967

# PACIFIC ANNOUNCES NEW 727 JET SERVICE AND NEW JET COACH FARES\* WITHIN CALIFORNIA AND NEVADA



<b>SAN JOSE-LOS ANGELES</b> NON STOP	<b>\$13.50</b>
<b>SAN JOSE-LAS VEGAS</b> NON STOP	<b>\$23.81</b>
<b>SAN FRANCISCO-HOLLYWOOD/BURBANK</b> NON STOP	<b>\$13.50</b>
<b>SAN FRANCISCO-EUREKA</b> NON STOP	<b>\$17.14</b>
<b>SAN FRANCISCO-SANTA BARBARA</b> ONE STOP	<b>\$19.04</b>
<b>SAN FRANCISCO-FRESNO</b> NON STOP	<b>\$12.58</b>
<b>SAN FRANCISCO-BAKERSFIELD</b> ONE STOP	<b>\$19.04</b>
<b>LOS ANGELES-MONTEREY</b> ONE STOP	<b>\$20.00</b>
<b>LOS ANGELES-FRESNO</b> ONE STOP	<b>\$16.19</b>
† <b>HOLLYWOOD/BURBANK-LAS VEGAS</b> NON STOP	<b>\$14.50</b>
<b>HOLLYWOOD/BURBANK-EUREKA</b> ONE STOP	<b>\$30.64</b>



## ... AND THERE'S EVEN MORE!

See schedules for additional 727 Jet and new Prop-Jet service to these and other cities.

## MORE JETS MORE SERVICE LOW JET COACH FARES

More people fly Pacific to more Pacific Coast cities than any other airline.  
And now... more reasons than ever!

\*Jet coach fares effective April 30 subject to CAB approval.  
†Hollywood/Burbank-Las Vegas route subject to CAB approval.

# PACIFIC QUICK REFERENCE SCHEDULES

BETWEEN SELECTED CITIES

For complete schedule information see pages 7 thru 10

## SAN FRANCISCO → BAKERSFIELD

Flight No.	Leave SAN FRANCISCO	Arrive BAKERSFIELD	Frequency	Class Service	Stops	Type Aircraft
701	7 55 am	9 31 am	Daily	A	1	F-27
703	9 30 am	11 23 am	Daily	A	2	F-27
41	5 25 pm	6 33 pm	Ex Sat	Y	1	B-727
707	7 35 pm	9 27 pm	Daily	A	2	F-27

## BAKERSFIELD → SAN FRANCISCO

Flight No.	Leave BAKERSFIELD	Arrive SAN FRANCISCO	Frequency	Class Service	Stops	Type Aircraft
702	7 49 am	9 31 am	Daily	A	2	F-27
42	3 47 pm	4 56 pm	Ex Sat	Y	1	B-727
706	4 45 pm	6 29 pm	Daily	A	2	F-27
708	6 55 pm	8 24 pm	Daily	A	1	F-27

## SAN FRANCISCO → HOLLYWOOD/BURBANK

Flight No.	Leave SAN FRANCISCO	Arrive BURBANK	Frequency	Class Service	Stops	Type Aircraft
51	7 00 am	7 50 am	Ex Sat Sun & Hol	K	0	B-727
53	9 30 am	10 20 am	Daily	K	0	B-727
55	5 00 pm	5 50 pm	Daily	K	0	B-727

## HOLLYWOOD/BURBANK → SAN FRANCISCO

Flight No.	Leave BURBANK	Arrive SAN FRANCISCO	Frequency	Class Service	Stops	Type Aircraft
52	8 15 am	9 05 am	Ex Sat Sun & Hol	K	0	B-727
54	1 10 pm	2 00 pm	Daily	K	0	B-727
56	8 45 pm	9 35 pm	Daily	K	0	B-727

## SAN FRANCISCO → CHICO

Flight No.	Leave SAN FRANCISCO	Arrive CHICO	Frequency	Class Service	Stops	Type Aircraft
750	7 35 am	8 58 am	Daily	A	2	F-27
752	11 00 am	11 48 am	Ex Sat Sun & Hol	A	0	F-27
756	4 00 pm	4 48 pm	Daily	A	0	F-27
758	8 30 pm	9 54 pm	Daily	A	2	F-27

## CHICO → SAN FRANCISCO

Flight No.	Leave CHICO	Arrive SAN FRANCISCO	Frequency	Class Service	Stops	Type Aircraft
751	7 02 am	8 24 am	Daily	A	2	F-27
753	1 12 pm	2 00 pm	Ex Sat Sun & Hol	A	0	F-27
755	4 14 pm	5 34 pm	Daily	A	2	F-27
757	6 12 pm	7 00 pm	Daily	A	0	F-27

## SAN FRANCISCO → EUREKA

Flight No.	Leave SAN FRANCISCO	Arrive EUREKA	Frequency	Class Service	Stops	Type Aircraft
750	7 35 am	10 15 am	Daily	A	4	F-27
714	8 30 am	10 21 am	Daily	A	2	F-27
54	2 30 pm	3 17 pm	Daily	Y	0	B-727
712	6 00 pm	7 35 pm	Daily	A	1	F-27

## EUREKA → SAN FRANCISCO

Flight No.	Leave EUREKA	Arrive SAN FRANCISCO	Frequency	Class Service	Stops	Type Aircraft
711	9 05 am	10 31 am	Daily	A	1	F-27
715	12 00 noon	1 49 pm	Daily	A	2	F-27
755	3 00 pm	5 34 pm	Daily	A	4	F-27
55	3 50 pm	4 33 pm	Daily	Y	0	B-727

## SAN FRANCISCO → FRESNO

Flight No.	Leave SAN FRANCISCO	Arrive FRESNO	Frequency	Class Service	Stops	Type Aircraft
701	7 55 am	8 48 am	Daily	A	0	F-27
703	9 30 am	10 41 am	Daily	A	1	F-27
705	12 45 pm	1 38 pm	Daily	A	0	F-27
41	5 25 pm	5 58 pm	Ex Sat	Y	0	B-727
707	7 35 pm	8 44 pm	Daily	A	1	F-27

## FRESNO → SAN FRANCISCO

Flight No.	Leave FRESNO	Arrive SAN FRANCISCO	Frequency	Class Service	Stops	Type Aircraft
702	8 28 am	9 31 am	Daily	A	1	F-27
704	2 04 pm	2 53 pm	Daily	A	0	F-27
42	4 23 pm	4 56 pm	Ex Sat	Y	0	B-727
706	5 25 pm	6 29 pm	Daily	A	1	F-27
708	7 35 pm	8 24 pm	Daily	A	0	F-27

## SAN FRANCISCO → MEDFORD

Flight No.	Leave SAN FRANCISCO	Arrive MEDFORD	Frequency	Class Service	Stops	Type Aircraft
754	6 10 pm	7 48 pm	Daily	A	0	F-27

## MEDFORD → SAN FRANCISCO

Flight No.	Leave MEDFORD	Arrive SAN FRANCISCO	Frequency	Class Service	Stops	Type Aircraft
759	8 10 pm	9 43 pm	Daily	A	0	F-27

## SAN FRANCISCO → MONTEREY

Flight No.	Leave SAN FRANCISCO	Arrive MONTEREY	Frequency	Class Service	Stops	Type Aircraft
21	8 00 am	8 29 am	Ex Sun	Y	0	B-727
761	8 00 am	8 30 am	Sun Only	A	0	F-27
23	12 40 pm	1 09 pm	Daily	Y	0	B-727
25	5 50 pm	6 19 pm	Daily	Y	0	B-727

## MONTEREY → SAN FRANCISCO

Flight No.	Leave MONTEREY	Arrive SAN FRANCISCO	Frequency	Class Service	Stops	Type Aircraft
22	11 44 am	12 06 pm	Ex Sun	Y	0	B-727
762	12 42 pm	1 09 pm	Sun Only	A	0	F-27
24	4 49 pm	5 11 pm	Daily	Y	0	B-727
26	9 29 pm	9 51 pm	Daily	Y	0	B-727

# PACIFIC QUICK REFERENCE SCHEDULES

BETWEEN SELECTED CITIES

For complete schedule information see pages 7 thru 10

## SAN FRANCISCO → REDDING

Flight No.	Leave SAN FRANCISCO	Arrive REDDING	Frequency	Class Service	Stops	Type Aircraft
750	7 35 am	9 25 am	Daily	A	3	F-27
752	11 00 am	12 15 pm	Ex Sat Sun & Hol	A	1	F-27
756	4 00 pm	5 14 pm	Daily	A	1	F-27
758	8 30 pm	10 21 pm	Daily	A	3	F-27

## REDDING → SAN FRANCISCO

Flight No.	Leave REDDING	Arrive SAN FRANCISCO	Frequency	Class Service	Stops	Type Aircraft
751	6 35 am	8 24 am	Daily	A	3	F-27
753	12 45 pm	2 00 pm	Ex Sat Sun & Hol	A	1	F-27
755	3 47 pm	5 34 pm	Daily	A	3	F-27
757	5 45 pm	7 00 pm	Daily	A	1	F-27

## SAN FRANCISCO → RENO

Flight No.	Leave SAN FRANCISCO	Arrive RENO	Frequency	Class Service	Stops	Type Aircraft
772	7 15 pm	8 50 pm	Daily	A	2	F-27
708	8 50 pm	10 15 pm	Daily	A	1	F-27

## RENO → SAN FRANCISCO

Flight No.	Leave RENO	Arrive SAN FRANCISCO	Frequency	Class Service	Stops	Type Aircraft
773	5 15 am	6 35 am	Daily	A	1	F-27
775	6 05 am	7 36 am	Daily	A	2	F-27

## SAN FRANCISCO → SACRAMENTO

Flight No.	Leave SAN FRANCISCO	Arrive SACRAMENTO	Frequency	Class Service	Stops	Type Aircraft
750	7 35 am	8 05 am	Daily	A	0	F-27
792	10 00 am	10 30 am	Ex Sun	A	0	F-27
794	12 00 noon	12 30 pm	Daily	A	0	F-27
796	3 00 pm	3 30 pm	Daily	A	0	F-27
798	5 30 pm	6 00 pm	Daily	A	0	F-27
726	8 15 pm	8 45 pm	Ex Sat Sun & Hol	A	0	F-27
728	8 15 pm	8 45 pm	Sat Sun Hol Only	A	0	F-27
758	8 30 pm	9 00 pm	Daily	A	0	F-27

## SACRAMENTO → SAN FRANCISCO

Flight No.	Leave SACRAMENTO	Arrive SAN FRANCISCO	Frequency	Class Service	Stops	Type Aircraft
701	7 00 am	7 27 am	Daily	A	0	F-27
751	7 55 am	8 24 am	Daily	A	0	F-27
793	10 50 am	11 19 am	Ex Sun	A	0	F-27
795	12 50 pm	1 19 pm	Daily	A	0	F-27
797	3 50 pm	4 19 pm	Daily	A	0	F-27
755	5 05 pm	5 34 pm	Daily	A	0	F-27
799	6 20 pm	6 49 pm	Daily	A	0	F-27

## SAN FRANCISCO → SANTA BARBARA

Flight No.	Leave SAN FRANCISCO	Arrive SANTA BARBARA	Frequency	Class Service	Stops	Type Aircraft
21	8 00 am	9 16 am	Ex Sun	Y	1	B-727
761	8 00 am	9 37 am	Sun Only	A	1	F-27
23	12 40 pm	1 56 pm	Daily	Y	1	B-727
25	5 50 pm	7 05 pm	Daily	Y	1	B-727

## SANTA BARBARA → SAN FRANCISCO

Flight No.	Leave SANTA BARBARA	Arrive SAN FRANCISCO	Frequency	Class Service	Stops	Type Aircraft
22	10 57 am	12 06 pm	Ex Sun	Y	1	B-727
762	11 34 am	1 09 pm	Sun Only	A	1	F-27
24	4 02 pm	5 11 pm	Daily	Y	1	B-727
26	8 42 pm	9 51 pm	Daily	Y	1	B-727

## SAN FRANCISCO → LAKE TAHOE

Flight No.	Leave SAN FRANCISCO	Arrive LAKE TAHOE	Frequency	Class Service	Stops	Type Aircraft
702	10 05 am	10 59 am	Daily	A	0	F-27

## LAKE TAHOE → SAN FRANCISCO

Flight No.	Leave LAKE TAHOE	Arrive SAN FRANCISCO	Frequency	Class Service	Stops	Type Aircraft
705	11 25 am	12 19 pm	Daily	A	0	F-27

## LOS ANGELES → BAKERSFIELD

Flight No.	Leave LOS ANGELES	Arrive BAKERSFIELD	Frequency	Class Service	Stops	Type Aircraft
702	7 00 am	7 40 am	Daily	A	0	F-27
42	3 10 pm	3 37 pm	Ex Sat	Y	0	B-727
708	6 05 pm	6 45 pm	Daily	A	0	F-27

## BAKERSFIELD → LOS ANGELES

Flight No.	Leave BAKERSFIELD	Arrive LOS ANGELES	Frequency	Class Service	Stops	Type Aircraft
701	9 41 am	10 19 am	Daily	A	0	F-27
41	6 43 pm	7 10 pm	Ex Sat	Y	0	B-727
707	9 37 pm	10 15 pm	Daily	A	0	F-27

# PACIFIC QUICK REFERENCE SCHEDULES

BETWEEN SELECTED CITIES

For complete schedule information see pages 7 thru 10

## LOS ANGELES → FRESNO

Flight No.	Leave LOS ANGELES	Arrive FRESNO	Frequency	Class Service	Stops	Type Aircraft
702	7 00 am	8 19 am	Daily	A	1	F-27
704	12 50 pm	1 54 pm	Daily	A	0	F-27
42	3 10 pm	4 13 pm	Ex Sat	Y	1	B-727
708	6 05 pm	7 25 pm	Daily	A	1	F-27

## FRESNO → LOS ANGELES

Flight No.	Leave FRESNO	Arrive LOS ANGELES	Frequency	Class Service	Stops	Type Aircraft
701	9 00 am	10 19 am	Daily	A	1	F-27
705	1 50 pm	2 52 pm	Daily	A	0	F-27
41	6 08 pm	7 10 pm	Ex Sat	Y	1	B-727
707	8 56 pm	10 15 pm	Daily	A	1	F-27

## LOS ANGELES → MONTEREY

Flight No.	Leave LOS ANGELES	Arrive MONTEREY	Frequency	Class Service	Stops	Type Aircraft
22	10 20 am	11 34 am	Ex Sun	Y	1	B-727
762	10 50 am	12 32 pm	Sun Only	A	1	F-27
24	3 25 pm	4 39 pm	Daily	Y	1	B-727
26	8 05 pm	9 19 pm	Daily	Y	1	B-727

## MONTEREY → LOS ANGELES

Flight No.	Leave MONTEREY	Arrive LOS ANGELES	Frequency	Class Service	Stops	Type Aircraft
21	8 40 am	9 51 am	Ex Sun	Y	1	B-727
761	8 40 am	10 21 am	Sun Only	A	1	F-27
23	1 20 pm	2 31 pm	Daily	Y	1	B-727
25	6 29 pm	7 40 pm	Daily	Y	1	B-727

## LOS ANGELES → SANTA BARBARA

Flight No.	Leave LOS ANGELES	Arrive SANTA BARBARA	Frequency	Class Service	Stops	Type Aircraft
22	10 20 am	10 47 am	Ex Sun	Y	0	B-727
762	10 50 am	11 24 am	Sun Only	A	0	F-27
24	3 25 pm	3 52 pm	Daily	Y	0	B-727
26	8 05 pm	8 32 pm	Daily	Y	0	B-727

## SANTA BARBARA → LOS ANGELES

Flight No.	Leave SANTA BARBARA	Arrive LOS ANGELES	Frequency	Class Service	Stops	Type Aircraft
21	9 26 am	9 51 am	Ex Sun	Y	0	B-727
761	9 47 am	10 21 am	Sun Only	A	0	F-27
23	2 06 pm	2 31 pm	Daily	Y	0	B-727
25	7 15 pm	7 40 pm	Daily	Y	0	B-727

## LOS ANGELES → SANTA MARIA

Flight No.	Leave LOS ANGELES	Arrive SANTA MARIA	Frequency	Class Service	Stops	Type Aircraft
722	7 55 am	9 23 am	Ex Sat Sun & Hol	A	2	F-27
724	8 05 am	9 10 am	Sat Sun Hol Only	A	1	F-27
732	11 00 am	11 46 am	Ex Sat Sun & Hol	A	0	F-27
726	4 15 pm	5 25 pm	Ex Sat Sun & Hol	A	1	F-27
734	3 20 pm	4 06 pm	Ex Sat Sun & Hol	A	0	F-27
728	5 05 pm	6 09 pm	Sat Sun Hol Only	A	1	F-27

## SANTA MARIA → LOS ANGELES

Flight No.	Leave SANTA MARIA	Arrive LOS ANGELES	Frequency	Class Service	Stops	Type Aircraft
723	9 04 am	10 09 am	Ex Sat Sun & Hol	A	1	F-27
725	9 04 am	10 30 am	Sat Sun Hol Only	A	1	F-27
733	12 10 pm	1 20 pm	Ex Sat Sun & Hol	A	1	F-27
735	4 25 pm	5 35 pm	Ex Sat Sun & Hol	A	1	F-27
727	5 55 pm	7 25 pm	Ex Sat Sun & Hol	A	2	F-27
729	5 35 pm	6 40 pm	Sat Sun Hol Only	A	1	F-27

## LOS ANGELES → VANDENBERG A.F.B.

Flight No.	Leave LOS ANGELES	Arrive VANDENBERG A.F.B.	Frequency	Class Service	Stops	Type Aircraft
722	7 55 am	9 02 am	Ex Sat Sun & Hol	A	1	F-27
734/735	3 20 pm	4 40 pm	Ex Sat Sun & Hol	A	1	F-27
726	4 15 pm	5 52 pm	Ex Sat Sun & Hol	A	2	F-27

\*734 makes a direct connection to flight 735 Santa Maria-Vandenberg AFB

## VANDENBERG A.F.B. → LOS ANGELES

Flight No.	Leave VANDENBERG A.F.B.	Arrive LOS ANGELES	Frequency	Class Service	Stops	Type Aircraft
723	8 34 am	10 09 am	Ex Sat Sun & Hol	A	2	F-27
733	12 35 pm	1 20 pm	Ex Sat Sun & Hol	A	0	F-27
735	4 50 pm	5 35 pm	Ex Sat Sun & Hol	A	0	F-27
727	6 20 pm	7 25 pm	Ex Sat Sun & Hol	A	1	F-27

## SAN JOSE → BAKERSFIELD

Flight No.	Leave SAN JOSE	Arrive BAKERSFIELD	Frequency	Class Service	Stops	Type Aircraft
703	9 57 am	11 23 am	Daily	A	1	F-27
707	8 00 pm	9 27 pm	Daily	A	1	F-27

## BAKERSFIELD → SAN JOSE

Flight No.	Leave BAKERSFIELD	Arrive SAN JOSE	Frequency	Class Service	Stops	Type Aircraft
702	7 49 am	9 10 am	Daily	A	1	F-27
706	4 45 pm	6 07 pm	Daily	A	1	F-27

## SAN JOSE → FRESNO

Flight No.	Leave SAN JOSE	Arrive FRESNO	Frequency	Class Service	Stops	Type Aircraft
703	9 57 am	10 41 am	Daily	A	0	F-27
707	8 00 pm	8 44 pm	Daily	A	0	F-27

## FRESNO → SAN JOSE

Flight No.	Leave FRESNO	Arrive SAN JOSE	Frequency	Class Service	Stops	Type Aircraft
702	8 28 am	9 10 am	Daily	A	0	F-27
706	5 25 pm	6 07 pm	Daily	A	0	F-27

# PACIFIC QUICK REFERENCE SCHEDULES

BETWEEN SELECTED CITIES

For complete schedule information see pages 7 thru 10

## SAN JOSE → LAS VEGAS

Flight No.	Leave SAN JOSE	Arrive LAS VEGAS	Frequency	Class Service	Stops	Type Aircraft
703	9 57 am	1 10 pm	Daily	A	3	F-27
61	11 10 am	12 10 pm	Ex Mon Wed & Sat	K	0	B-727

## LAS VEGAS → SAN JOSE

Flight No.	Leave LAS VEGAS	Arrive SAN JOSE	Frequency	Class Service	Stops	Type Aircraft
62	12 30 pm	1 30 pm	Ex Mon Wed & Sat	K	0	B-727
706	3 00 pm	6 07 pm	Daily	A	3	F-27

## SAN JOSE → LOS ANGELES

Flight No.	Leave SAN JOSE	Arrive LOS ANGELES	Frequency	Class Service	Stops	Type Aircraft
723	7 14 am	10 09 am	Ex Sat Sun & Hol	A	3	F-27
3	8 30 am	9 20 am	Ex Sat Sun & Hol	K	0	B-727
5	1 55 pm	2 45 pm	Ex Sat	K	0	B-727
727	4 38 pm	7 25 pm	Ex Sat Sun & Hol	A	4	F-27
707	8 00 pm	10 15 pm	Daily	A	2	F-27
7	8 50 pm	9 40 pm	Ex Sat	K	0	B-727

## LOS ANGELES → SAN JOSE

Flight No.	Leave LOS ANGELES	Arrive SAN JOSE	Frequency	Class Service	Stops	Type Aircraft
702	7 00 am	9 10 am	Daily	A	2	F-27
2	7 15 am	8 05 am	Ex Sat Sun & Hol	K	0	B-727
722	7 55 am	10 41 am	Ex Sat Sun & Hol	A	4	F-27
4	9 45 am	10 35 am	Ex Sat Sun & Hol	K	0	B-727
726	4 15 pm	7 12 pm	Ex Sat Sun & Hol	A	4	F-27
708	6 05 pm	8 29 pm	Daily	A	2	F-27
6	7 35 pm	8 25 pm	Ex Sat	K	0	B-727
8	10 00 pm	10 50 pm	Fri Only	K	0	B-727

## SAN JOSE → VANDENBERG A.F.B.

Flight No.	Leave SAN JOSE	Arrive VANDENBERG A.F.B.	Frequency	Class Service	Stops	Type Aircraft
723	7 14 am	8 24 am	Ex Sat Sun & Hol	A	1	F-27
727	4 38 pm	6 10 pm	Ex Sat Sun & Hol	A	2	F-27

## VANDENBERG A.F.B. → SAN JOSE

Flight No.	Leave VANDENBERG A.F.B.	Arrive SAN JOSE	Frequency	Class Service	Stops	Type Aircraft
722	9 08 am	10 41 am	Ex Sat Sun & Hol	A	2	F-27
726	6 02 pm	7 12 pm	Ex Sat Sun & Hol	A	1	F-27

## HOLLYWOOD/BURBANK → LAS VEGAS\*

Flight No.	Leave BURBANK	Arrive LAS VEGAS	Frequency	Class Service	Stops	Type Aircraft
70	10 45 am	11 27 am	Daily	K	0	B-727
72	6 15 pm	6 57 pm	Daily	K	0	B-727

## LAS VEGAS → HOLLYWOOD/BURBANK\*

Flight No.	Leave LAS VEGAS	Arrive BURBANK	Frequency	Class Service	Stops	Type Aircraft
71	12 00 noon	12 44 pm	Daily	K	0	B-727
73	7 30 pm	8 14 pm	Daily	K	0	B-727

\*Pending C.A.B. Approval

## OAKLAND → EUREKA

Flight No.	Leave OAKLAND	Arrive EUREKA	Frequency	Class Service	Stops	Type Aircraft
714	8 51 am	10 21 am	Daily	A	1	F-27

## EUREKA → OAKLAND

Flight No.	Leave EUREKA	Arrive OAKLAND	Frequency	Class Service	Stops	Type Aircraft
715	12 00 Noon	1 30 pm	Daily	A	1	F-27

## OAKLAND → RENO

Flight No.	Leave OAKLAND	Arrive RENO	Frequency	Class Service	Stops	Type Aircraft
772	7 36 pm	8 50 pm	Daily	A	1	F-27

## RENO → OAKLAND

Flight No.	Leave RENO	Arrive OAKLAND	Frequency	Class Service	Stops	Type Aircraft
775	6 05 am	7 18 am	Daily	A	1	F-27

## PORTLAND → EUREKA

Flight No.	Leave PORTLAND	Arrive EUREKA	Frequency	Class Service	Stops	Type Aircraft
711	7 00 am	8 50 am	Daily	A	1	F-27
755	1 00 pm	2 50 pm	Daily	A	1	F-27

## EUREKA → PORTLAND

Flight No.	Leave EUREKA	Arrive PORTLAND	Frequency	Class Service	Stops	Type Aircraft
750	10 25 am	12 09 pm	Daily	A	1	F-27
712	7 50 pm	9 34 pm	Daily	A	1	F-27



# PACIFIC SOUTHBOUND SERVICE

EFFECTIVE APRIL 30, 1967

A.M.—LIGHT TYPE P.M.—DARK TYPE

All times shown are Pacific Daylight Time.

795 Daily	5 Daily Ex. Sat.	715 Daily	753 Daily Ex. Sat. Sun. & Hol.	733 Daily Ex. Sat. Sun. & Hol.	735 Daily Ex. Sat. Sun. & Hol.	727 Daily Ex. Sat. Sun. & Hol.	729 Sat. Sun. & Hol. Only	797 Daily	55 Daily	FLIGHT NUMBER	41 Daily Ex. Sat.	755 Daily	25 Daily	73 Daily	799 Daily	757 Daily	707 Daily	7 Daily Ex. Sat.	759 Daily	DAYS OF OPERATION	CLASS OF SERVICE	AIRCRAFT
A F-27	K B-727	A F-27	A F-27	A F-27	A F-27	A F-27	A F-27	A F-27	Y K B-727	Y B-727	A F-27	Y B-727	Y B-727	A F-27	A F-27	A F-27	K B-727	A F-27				
										LV	LV	1 00										
										LV	LV	↓										
										LV	LV	2 25										
		12 00								AR	AR											
		1 04								LV	LV	3 00										
			12 45							LV	LV	↓										
			1 12							LV	LV	3 47				5 45						
										LV	LV	4 14				6 12						
										LV	LV	4 39										
										LV	LV	↓										
										LV	LV	5 05			6 20							
12 50										LV	LV	↓										
										AR	AR											
						3 00	3 00			LV	LV	5 05										
										AR	AR	↓										
										LV	LV	5 34										
										AR	AR	↓										
										LV	LV	5 25			5 50							
										AR	AR	↓										
										LV	LV	6 29										
										AR	AR	↓										
										LV	LV	6 08										
										LV	LV	↓										
										LV	LV	6 43										
										AR	AR	↓										
										LV	LV	7 15										
										AR	AR	↓										
										LV	LV	7 10										
										AR	AR	↓										
										LV	LV	7 40										
										AR	AR	↓										
										LV	LV	8 14										
										AR	AR	↓										
										LV	LV	10 15										
										AR	AR	↓										
										LV	LV	9 40										
										AR	AR	↓										

COCKTAIL SERVICE AVAILABLE ON ALL FLIGHTS . . . CONTINENTAL BREAKFAST ON APPROPRIATE FLIGHTS

† NO LOCAL ON-LINE TRAFFIC MAY BE CARRIED ON PACIFIC BETWEEN LOS ANGELES/BURBANK AND SAN DIEGO.

\* THE RIGHT OF PASSENGERS TO ENPLANE OR DEPLANE AT VANDENBERG AFB IS SUBJECT TO MILITARY SECURITY CONTROL





# PACIFIC NORTHBOUND SERVICE

EFFECTIVE APRIL 30, 1967

A.M.—LIGHT TYPE P.M.—DARK TYPE  
All times shown are Pacific Daylight Time.

756 Daily	42 Daily Ex. Sat.	798 Daily	24 Daily	712 Daily	754 Daily	706 Daily	772 Daily	734 Daily Ex. Sat. Sun. & Hol.	726 Daily Ex. Sat. Sun. & Hol.	← FLIGHT NUMBER → ← DAYS OF OPERATION →		728 Sat. Sun. & Hol. Only	708 Daily	6 Daily Ex. Sat.	758 Daily	72 Daily	26 Daily	56 Daily	782 Daily	8 Fri. Only	
A F-27	Y B-727	A F-27	Y B-727	A F-27	A F-27	A F-27	A F-27	A F-27	A F-27	← CLASS OF SERVICE → ← AIRCRAFT →		A F-27	A F-27	K B-727	A F-27	K B-727	Y B-727	K B-727	A F-27	K B-727	
								SEE NOTE	13 20	LV	SAN DIEGO	LV	14 10								
										LV	LONG BEACH	LV									
	3 10		3 25					3 20	4 15	AR	LOS ANGELES INTERNATIONAL	AR	14 45	6 05	7 35		8 05		9 45	10 00	
										LV	HOLLYWOOD-BURBANK	LV					6 15		8 45		
										LV	PALMDALE-LANCASTER	LV								10 20	
										AR	INYO KERN	AR								10 45	
									4 55	LV	OXNARD-VENTURA	LV	5 39					8 42			
			4 02							LV	SANTA BARBARA	LV									
						3 00				AR	LAS VEGAS	AR									
						4 08				LV	PALMDALE-LANCASTER	LV									
	3 47					4 45				LV	BAKERSFIELD	LV	6 55								
								4 06	5 37	LV	SANTA MARIA-PUBLIC AIRPORT	LV	6 18								
									6 02	LV	SANTA MARIA-VANDENBERG A.F.B.*	LV									
										LV	SANTA MARIA-PUBLIC AIRPORT	LV									
									6 31	LV	PASO ROBLES-SAN LUIS OBISPO	LV	6 44								
	4 23					5 25				LV	FRESNO	LV	7 35								
										LV	MONTEREY-SALINAS (CARMEL FT. ORD)	LV						9 29			
			4 49							AR	SAN JOSE	AR			8 25					10 50	
	4 56		5 11			6 15			7 20	LV	SAN JOSE	LV								11 00	
						6 29			7 34	AR	SAN FRANCISCO	AR	7 34	8 24				9 51	9 35	11 14	
4 00		5 30		6 00	6 10		7 15		8 15	LV	SAN FRANCISCO	LV	8 15	8 50	8 30						
							7 36			LV	OAKLAND	LV									
										AR	SAN JOSE	AR		9 17							
										LV	STOCKTON	LV									
							8 06			AR	SACRAMENTO	AR	8 45								
									8 45	LV	LAKE TAHOE	LV									
							8 50			AR	RENO	AR		10 15							
										LV	MARYSVILLE-YUBA CITY	LV									
										LV	CHICO	LV									
4 53										AR	REDDING-RED BLUFF	AR									
5 14										LV	SANTA ROSA	LV									
										AR	EUREKA-ARCATA	AR									
										LV	CRESCENT CITY	LV									
							7 48			AR	MEDFORD	AR									
										AR	PORTLAND	AR									

COCKTAIL SERVICE AVAILABLE ON ALL FLIGHTS . . . CONTINENTAL BREAKFAST ON APPROPRIATE FLIGHTS

† NO LOCAL ON-LINE TRAFFIC MAY BE CARRIED ON PACIFIC BETWEEN LOS ANGELES/BURBANK AND SAN DIEGO.

NOTE: 734 MAKES DIRECT CONNECTION TO FLIGHT 735 SANTA MARIA-VANDENBERG

\* THE RIGHT OF PASSENGERS TO ENPLANE OR DEPLANE AT VANDENBERG AFB IS SUBJECT TO MILITARY SECURITY CONTROL

## EXAMPLES OF LOCAL FARES

Complete fares and permissive routings are contained in our official tariffs available for inspection at all Pacific Air Lines ticket offices.

*Jet Coach Fares Listed in Red*

(All Fares Subject to 5% Federal Transportation Tax)

BETWEEN: AND Fares Subject to Change Without Notice	Bakersfield	Burbank	Chico	Crescent City	Eureka- Arcata	Fresno	Inyokern	Lake Tahoe	Las Vegas	Long Beach	Los Angeles	Marysville- Yuba City	Modford	Monterey- Salinas	Oakland	Oxnard- Ventura	Palmdale- Lancaster	Paso Robles	Portland	Redding- Red Bluff	Reno	Sacramento	San Diego	San Francisco	San Jose	Santa Barbara	Santa Maria	Santa Rosa	Stockton
Bakersfield	10.75				31.43	9.52		29.52			9.52													19.04					
Burbank	28.95	36.85						32.38																					
Chico	39.65	46.55	19.20																										
Crescent City	42.50		16.25	7.60																									
Eureka-Arcata					28.57						38.10																		
Fresno	10.40	17.60	24.30	34.85	31.15			22.86			16.19																		
Inyokern	17.85	10.75	43.60	53.65	49.60	22.05																							
Lake Tahoe	32.50	35.60	13.90	28.25	24.30	25.95	44.00				32.38																		
Las Vegas	18.50	21.75	45.30	54.80	50.85	28.85		48.70						19.05															
Long Beach	11.85	7.15	37.50	48.15	44.35	18.70	11.85	36.70	22.90																				
Los Angeles	10.75	6.00	36.85	46.55	42.50	17.60	10.75	35.60	21.75	6.00				20.00															
Marysville-Yuba City	25.40	33.35	6.75	*22.65	*19.75	20.90	40.45	12.35	41.80	34.10	33.35																		
Inyokern	43.00	48.65	16.25	8.95	10.95	35.85	55.40	29.45	56.95	49.75	48.65	19.70																	
Monterey-Salinas	14.60	22.00	20.30	28.75	24.25		29.15	21.80	29.25	23.15	22.00	16.75	30.85																
Oakland	21.00	26.35	15.15	23.40	18.80	13.90	33.50	16.50	34.65	27.45	26.35	11.60	26.55	8.55															
Oxnard-Ventura	*15.30	6.75	35.85	44.30	40.25	18.40	13.95	33.60		7.90	6.75	32.30	46.45	18.85	24.20														
Palmdale-Lancaster	*12.00	7.65	34.75	44.45	40.40	15.50	6.25	33.50	16.30	8.80	7.65	31.25	46.55	25.90	24.25	11.15													
Paso Robles	*23.00	14.40	29.35	37.75	33.55	27.90	21.50	24.10		15.05	14.40	25.85	39.95	12.30	17.65	11.15	18.80												
Portland	58.20	63.85	34.35	19.95	23.80	51.05	70.60	44.60	69.35	64.95	63.85	36.80	25.50	46.05	40.75	61.65	*60.80												
Redding-Red Bluff	32.60	40.80	7.25	14.10	11.00	28.10	50.15	17.75	49.00	41.35	40.80	10.75	12.55	23.05	17.70	38.55	38.70	32.05	30.70										
Reno	32.50	35.60	13.90	28.25	24.50	25.35	44.00	6.00	48.70	36.70	35.60	12.35	29.45	21.80	16.50	33.60	33.50	24.10	44.60	17.75									
Sacramento	24.70	30.30	9.80	*24.30	*20.70	*13.85	37.45	11.10	38.35	31.45	30.30	6.00	21.60	14.00	8.65	29.35	28.20	22.85	36.80	13.70	11.10								
San Diego	18.15	10.70	43.85	54.40	50.65	25.00	15.80	43.00	29.15	9.70	10.70	40.40	56.10	29.45	33.80	11.80	12.90	21.35	71.30	47.65	43.00	37.70							
San Francisco	21.00	26.35	15.15	23.40	18.80	13.90	33.50	16.50	34.65	27.45	26.35	11.60	25.55	8.55	6.00	24.20	24.25	17.65	40.70	17.70	16.50	8.65	33.80					19.04	
San Jose	18.20	24.10	16.30	25.10	21.80	11.60	31.30	18.50	31.85	24.90	23.40	12.50	27.25	7.50	6.00	23.10	22.00	16.55	43.10	19.40	18.50	8.65	31.20	6.00					
Santa Barbara	*17.85	9.30	33.05	41.50	37.35	21.10	16.45	34.55		10.40	9.30	29.50	43.65	16.05	21.30	6.00	13.65	8.35	58.85	35.75	34.55	26.70	16.70	21.30	20.25				
Santa Maria	*21.10	12.55	31.25	39.70	35.50	24.25	19.65	27.80		13.65	12.55	27.70	41.80	14.20	19.50	9.30	16.90	6.00	56.15	38.45	27.80	24.70	17.65	19.50	18.40	6.00			
Santa Rosa	23.90	30.85	*19.65	21.10	17.70	18.75	38.00	16.45	39.15	32.05	30.85	*16.20	24.40	13.05	7.80	28.70	38.75	22.10	36.45	*22.15	16.45	*13.10	38.35	7.80	9.45	25.85	23.95		
Stockton	18.20	25.35	14.25	28.90	24.50	17.10	32.45	14.20	34.85	26.50	25.35	10.75	25.55	11.45	7.65	25.20	27.60	20.95	42.80	17.70	14.20	7.10	32.85	7.65	17.65	24.65	22.85	13.25	

#—Via San Francisco or Oakland or both

^—Via Redding

←—Via Los Angeles

↑—Direct—Not via San Francisco

## EXAMPLES OF ROUND-TRIP EXCURSION FARES

Complete fares and permissive routings are contained in our official tariffs available for inspection at all Pacific Air Lines ticket offices. (All fares are subject to 5% federal transportation tax.)

### 6 DAY ROUND-TRIP EXCURSION FARES (Good for 5 days plus day of departure)\*

\*Travel on Fridays and Sundays is not permitted on these fares.

	Lake Tahoe	Las Vegas	Monterey	Oakland	Portland	Reno	Sacramento	San Francisco	San Jose	Santa Barbara
Bakersfield	48.45	31.45								
Crescent City				39.80	29.90	48.85	42.00	35.70	30.95	
Eureka-Arcata	36.80			31.95	34.85			39.80		
Fresno	38.05	49.05				36.80		31.95		
Lake Tahoe			32.80							51.85
Las Vegas								58.90	54.15	
Long Beach			34.70				47.20	41.20	37.35	
Los Angeles							45.45			
Monterey						32.80				
Reno										51.85

### 7 DAY ROUND-TRIP EXCURSION FARES (Good for 6 days plus day of departure)

	Bakersfield	Burbank	Fresno	Lake Tahoe	Las Vegas	Los Angeles	Monterey	Oakland	Palmdale- Lancaster	Reno	Sacramento	San Diego	San Francisco	San Jose	Santa Barbara	Santa Maria	Stockton
Bakersfield																	
Burbank		17.10															
Fresno																	
Lake Tahoe																	34.20
Las Vegas																	25.65
Los Angeles																	21.35
Monterey							33.00										
Reno											22.50		14.40	34.00	15.50	20.00	
Sacramento											16.70		24.75	24.75			
San Diego												39.00	22.40				
San Francisco													24.75				
San Jose														41.60			
Santa Barbara															33.50	31.20	13.00
Santa Maria																29.40	
Stockton																	38.50

**JET**

*Commuteair*

between

**LOS ANGELES**

San Jose . . . \$13.50

San Francisco . . . 13.50

---

**BURBANK**

San Francisco . . . 13.50

Las Vegas . . . 14.50\*

---

**SAN JOSE**

Los Angeles . . . 13.50

Las Vegas . . . 23.81\*

\*Pending C.A.B. Approval

City	Ticket Office	Phone No.	Rent-Car	City	Ticket Office	Phone No.	Rent-Car
Anaheim	Long Beach Municipal Airport	ZE 2-4000		Orinda	Oakland Int'l Airport	TE 4-2211	
Arcata	Arcata Airport	839-1555	☞	Oxnard	Oxnard-Ventura County Airport	HU 3-1155	☞
Bakersfield	Meadows Field	399-1771	☞	Pacific Grove	Monterey Penin. District Airport	FR 3-4404	
Beverly Hills	Los Angeles Int'l Airport	SP 6-1000		Palmdale	Gen. Wm. J. Fox Field	ZE 2-1143	
Burbank	Hollywood/Burbank Airport	246-8411	☞	Palo Alto	San Jose Municipal Airport	DA 6-1441	
Burlingame	San Francisco Int'l Airport	DI 2-1444		Paso Robles	Paso Robles County Airport	238-2525	☞
Carmel	Monterey Penin. District Airport	FR 3-4404		Pomona	Long Beach Municipal Airport	ZE 2-4000	
Chico	Chico Municipal Airport	343-5111	☞	Portland	Portland Int'l Airport	AT 8-6101	☞
Concord	Oakland International Airport	EN 1-1513		Redding	Redding Municipal Airport	246-1211	☞
Corte Madera	San Francisco Int'l Airport	383-3600		Redlands	Hollywood/Burbank Airport	ZE 2-4000	
Costa Mesa	Long Beach Municipal Airport	ZE 2-4000		Redwood City	San Francisco Int'l Airport	DI 2-1444	
Covina	Los Angeles Int'l Airport	ZE 2-4000		Reno	Reno Municipal Airport	329-4661	☞
Crescent City	Del Norte County Airport	464-2121	☞	Richmond	Oakland Int'l Airport	EN 1-1513	
Danville	Oakland International Airport	EN 1-1513		Riverside	Long Beach Municipal Airport	ZE 2-4000	
Dumbarton (Fremont)	San Jose Municipal Airport	EN 1-1513		Sacramento	Sacramento Municipal Airport	428-7200	☞
Edwards A.F.B.	Gen. Wm. J. Fox Field	EN 1-1778		Sacramento	Senator Hotel	428-7200	
El Cerrito	Oakland Int'l Airport	834-2211		Salinas	Monterey Penin. District Airport	HA 4-0444	
Eureka	Arcata Airport	839-1555	☞	San Anselmo	San Francisco Int'l Airport	383-3600	
Eureka	City Ticket Office	839-1555		San Bernardino	Long Beach Municipal Airport	ZE 2-4000	
Fort Ord	Monterey Penin. District Airport	373-4404		San Diego	Lindbergh Field	235-7355	☞
Fresno	Fresno Air Terminal	255-8321	☞	San Francisco	San Francisco Int'l Airport	761-1000	☞
Gilroy	San Jose Municipal Airport	EN 1-1513		San Francisco	236 Stockton Street	761-1000	
Glendale	Hollywood/Burbank Airport	246-8411		San Francisco	375 O'Farrell Street	761-1000	
Hanford	Fresno Air Terminal	EN 1-1513		San Jose	San Jose Municipal Airport	298-3000	☞
Hayward	Oakland International Airport	EN 1-1513		San Jose	No. 2 Town & Country Village	298-3000	
Hollywood	Hollywood/Burbank Airport	SP 6-1000		San Leandro	Oakland Int'l Airport	TE 4-2211	
Inglewood	Los Angeles Int'l Airport	646-2800	☞	San Luis Obispo	Paso Robles County Airport	EN 1-1513	
Inyokern	Kern County Airport	377-2581	☞	San Mateo	San Francisco Int'l Airport	DI 2-1444	
Lafayette	Oakland Int'l Airport	EN 1-1513		Santa Ana	Los Angeles Int'l Airport	ZE 2-4000	
Lake Tahoe	Tahoe Valley Airport	588-6685	☞	Santa Barbara	Santa Barbara Municipal Airport	967-5541	☞
Lancaster	Gen. Wm. J. Fox Field	WH 8-5951	☞	Santa Clara	San Jose Municipal Airport	298-3000	
Las Vegas	McCarran Field	736-1555	☞	Santa Maria	Santa Maria Public Airport	WA 2-2131	☞
Livermore	Oakland Int'l Airport	EN 1-1513		San Rafael	Oakland Int'l Airport	383-3600	
Lompoc	Santa Maria Public Airport	ZE 2-1143		Santa Rosa	Sonoma County Airport	546-2200	☞
Long Beach	Long Beach Municipal Airport	HE 2-4444	☞	Sausalito	San Francisco Int'l Airport	383-3600	
Los Angeles	Los Angeles Int'l Airport	SP 6-1000	☞	So. San Francisco	San Francisco Int'l Airport	761-1000	
Los Angeles	513 W. Sixth Street	SP 6-1000		Stockton	Stockton Field	466-4444	☞
Marysville	Yuba County Airport	743-5487	☞	Suisun	Oakland Int'l Airport	EN 1-1513	
Medford	Medford Municipal Airport	SP 2-6161	☞	Sunnyvale	San Jose Municipal Airport	298-3000	
Mill Valley	San Francisco Int'l Airport	383-3600		Vallejo	San Francisco Int'l Airport	EN 1-1513	
Monterey	Monterey Penin. District Airport	373-4404	☞	Vandenberg	Santa Maria Public Airport	WA 2-2131	☞
Mountain View	San Jose Municipal Airport	DA 6-1441		Ventura	Oxnard-Ventura County Airport	HU 3-1155	
Novato	San Francisco Int'l Airport	EN 1-1513		Visalia	Fresno Air Terminal	EN 1-1513	
Newport Beach	Los Angeles Int'l Airport	ZE 2-4000		Walnut Creek	Oakland Int'l Airport	EN 1-1513	
No. Hollywood	Hollywood/Burbank Airport	246-8411		West Covina	Hollywood/Burbank Airport	ZE 2-4000	
Oakland	Oakland Int'l Airport	834-2211	☞	Whittier	Los Angeles Int'l Airport	ZE 2-4000	
Ontario	Long Beach Municipal Airport	ZE 2-4000		Yuba City	Yuba County Airport	743-5487	☞

Rent car available. ☞

## GENERAL INFORMATION

**HOLIDAYS** New Years, Washington's Birthday, Memorial Day, July 4th, Labor Day, Thanksgiving and Christmas

**Class of Service Code**—A—First Class; K—Communtair; Y—Coach.

**Pacific Air Lines** carries passengers, air mail, air express and air freight.

**Pacific Air Lines Equipment**—Boeing 727, Fairchild F-27 Aircraft. All equipment operated by Pacific Air Lines is air conditioned, pressurized and radar equipped.

**Reservations**—Must be made in advance and are tentative until tickets are purchased. Pacific will cancel the reservations of any passenger who fails to present himself for check-in at the ticket lifting point at least 5 minutes before scheduled departure time of the flight.

**Family Plan**—Family members may pay as little as 33 1/3% of the regular fare. Check with your Pacific agent for details.

**Schedules**—Subject to change without notice. Pacific Air Lines is not responsible for consequences arising from delays or from timetable errors.

**Children's Fares**—In general, under 2 years, free; half fare from 2 to 12 years. Ask agent for tariff details.

†**Important Restriction**—Los Angeles-San Diego. No local traffic may be carried on Pacific between Los Angeles/Burbank and San Diego.

**Important Restriction**—Los Angeles-Las Vegas. On-line and/or interline traffic on Pacific between Los Angeles and Las Vegas must board or deplane at Burbank (Lockheed Air Terminal).

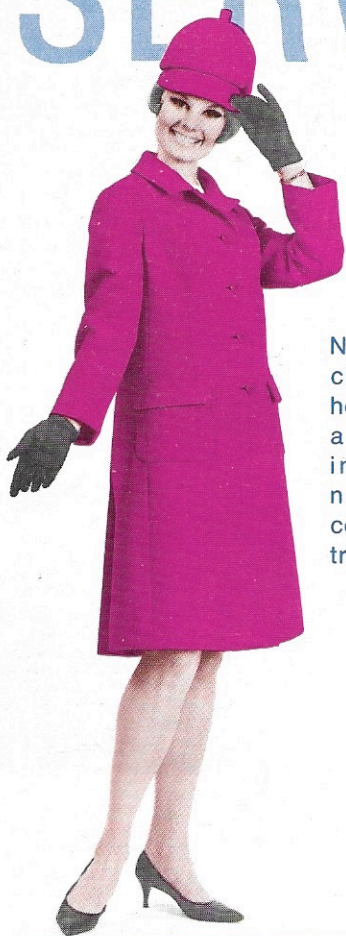
**Pacific Air Lines** reserves the right to substitute equipment with or without notice to passengers when conditions beyond its control necessitate substitution.

**U.S. FAR 121-96, Section 121.575 Alcoholic Beverages:**

- No person may drink any alcoholic beverage aboard an aircraft unless the certificate holder operating the aircraft has served that beverage to him.
- No certificate holder may serve any alcoholic beverage to any person aboard any of its aircraft if that person appears to be intoxicated.
- No certificate holder may allow any person to board any of its aircraft if that person appears to be intoxicated.
- Each certificate holder shall, within five days after the incident, report to the Administrator the refusal of any person to comply with paragraph (a) of this section, or of any disturbance caused by a person who appears to be intoxicated aboard any of its aircraft.

**Baggage Allowance**—1 bag, not exceeding 62 inches in overall height plus width plus length (such as a large Pullman bag) plus 1 bag, not exceeding 55 inches in overall height plus width plus length (such as a man's three suiter) plus any number of pieces to hand carry aboard the aircraft, which must fit beneath the passenger's seat.

# SERVICE



Nothing surpasses the gracious service of a Pacific hostess and now they add a colorful new look to our in-flight service. These new, especially designed costumes break with airline tradition—*beautifully!*



For information and reservations call Pacific or your Travel Agent