



**NORTHWEST**

## Frequent Flyers:

To ensure mileage credit,  
present your **WORLDPERKS<sup>SM</sup>**  
number when you check-in  
for each Northwest flight.

PASSENGER NAME

GATE

CLASS

TIME

AGENT

STANDBY INFORMATION



## NOTICE OF BAGGAGE LIABILITY LIMITATIONS

a higher value has been declared and additional charges paid, Northwest's  
for any form of damages as a result of the disappearance of, damage to.

## IMPORTANT NOTICES

**CHECK-IN AND BOARDING TIMES** Reservations are subject to cancellation and passengers may not be eligible for denied boarding compensation when check-in is: 1) less than 10 minutes prior to departure time of domestic flights; 2) less than 40 minutes prior to departure time of international flights. The same conditions apply if after having checked in for a flight, a passenger is not on board the aircraft at least 5 minutes before departure.

**FOR YOUR SECURITY** all passengers, and their handcarry items, must be inspected in accordance with the government sponsored security program. Passengers should proceed through security inspection in the departure gate at least 30 minutes prior to departure.

**RECONFIRMATION** of return or continuing reservations on international flights is required at least 72 hours prior to scheduled departure.

**CHECKED BAGGAGE** should be locked. Regulations require name identification on outside. Name labels are available at ticket counters. Checked baggage is subject to inspection and passengers may be required to present identification. Federal regulations require that firearms in checked baggage must be declared and be unloaded.

**CARRY-ON BAGGAGE** is limited to items which will fit underneath the passenger seat or in the overhead compartment. All items not needed in flight should be checked.

**HAZARDOUS MATERIALS** Federal regulations restrict carriage on aircraft of items classified as hazardous materials. These materials include, but are not limited to flammable gases, liquids and solids, non-flammable compressed gas, explosives, poisons, corrosives, oxidizing materials, radioactive materials, etiologic agent and magnetic materials. Further information is available upon request.

**NO SMOKING** sections are provided on all Northwest flights in each compartment: first class, executive class and coach class. Cigarette smoking only—no pipes or cigars are permitted.

**AMENITIES** such as hotel accommodations, meals, phone calls and ground transport are not provided at Northwest expense except in the case of first class passengers (all classes on Northwest international flights) when Northwest flights are delayed, cancelled or misconnect to other flights.

## NOTICE—OVERBOOKING OF FLIGHTS

Airline flights may be overbooked, and there is a slight chance that a seat will not be available on a flight for which a person has a confirmed reservation. If that flight is overbooked, no one will be denied a seat until airline personnel first ask for volunteers willing to give up their reservation in exchange for a payment of the airline's choosing. If there are not enough volunteers, the airline will deny boarding to other persons in accordance with its particular boarding priority. With few exceptions, persons denied boarding involuntarily are entitled to compensation. The complete rules for the payment of compensation and each airline's boarding priorities are available at all airport ticket counters and boarding locations. Some airlines do not apply these consumer protections to travel from some foreign countries although other consumer protections may be available. Check with the airline or your travel agent.



## CONNECTING FLIGHT BOARDING PASS



SERVED ON NORTHWEST FLIGHTS

# Time is Money. You Need It Now. Instant Alamo

## Fast Reservations

Call your Professional Travel Consultant or Alamo at 1-800-327-9633 and give us your Instant Alamo I.D. number, travel date, arrival time, flight and destination city, and your reservation will be ready instantly.

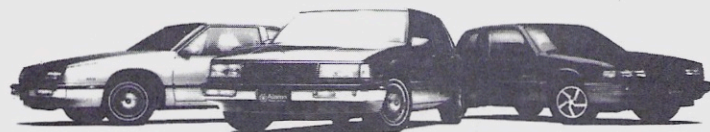
## Accelerated Rentals.

When you arrive at Alamo, your customized rental agreement will be processed automatically within seconds. Your preferred car is ready and waiting.

## Express Returns.

With Alamo, your receipt is in your hand. Detach the Express Return Receipt from your copy of the rental agreement and deposit the rest in our Express Return Box. Proceed directly to our courtesy bus for your immediate airport return.

On your next rental, be sure to ask for your own personal Instant Alamo I.D. number.



Alamo features fine General Motors cars like the Buick Regal, Buick Park Avenue and the Pontiac Grand Am.



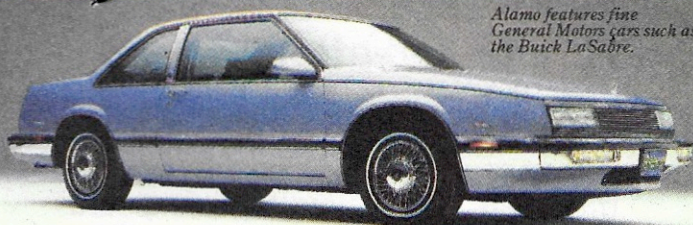
The Real #1 Bargain.



# Alamo

UNLIMITED FREE MILEAGE NATIONWIDE

*Alamo features fine General Motors cars such as the Buick LaSabre.*



## A New Standard In Luxury Only \$29<sup>99</sup> A Day.

This basic rate is subject to the terms, conditions and charges below.\*

Just present this ticket jacket and get the extra luxury of a Buick LaSabre or similar car for just \$29.99 a day. You get automatic transmission, air conditioning, AM/FM stereo, tilt wheel, plush interior, power windows, power steering and brakes all at this great low price nationwide. Plus, unlimited free mileage.

This special is for Northwest Airline passengers only. See your Travel Consultant, or call **Alamo** at **1-800-327-9633** for reservations. Ask for Plan "NW."

### Alamo Nationwide Locations:

Albuquerque	El Paso	Long Beach	N. Miami Beach	Portland
Anchorage	Ft. Lauderdale	Los Angeles	Oahu/Honolulu	Reno
Atlanta	Ft. Myers	Maui/Kahului	Oahu/Waikiki	Salt Lake City
Austin	Hawaii/Hilo	Melbourne	Oakland	San Antonio
Baltimore	Hawaii/Kona	Memphis	Oklahoma City	San Diego
Boston	Houston	Miami	Ontario, Calif.	San Francisco
Boise	Jacksonville	Milwaukee	Orange County	San Jose
Burbank	Kansas City	Minneapolis	Orlando	Sarasota
Charleston, S.C.	Kauai/Lihue	Nashville	Palm Springs	Savannah
Charlotte	Key West	New Orleans	Phoenix	Seattle
Chicago	Las Vegas	Norfolk	Pittsburgh	Tallahassee
Clearwater				Tampa
Cincinnati				Tucson
Dallas/Ft. Worth				Tulsa
Daytona Beach				Washington, D.C.
Denver				West Maui
Detroit				W. Palm Beach



The Real #1 Bargain.

\*Basic rate does not include: one-time fuel service charge of \$11.99 for 1/2 tank minimum (no credit for unused fuel), taxes, airport imposed fees, under-age-25 charges, drop charges, optional PAI, EP and CDW, or daily charge of \$1.50 for each additional driver. Prices are subject to change without notice. 24-hour reservation required. Limited availability. Geographic driving limitations apply. Rates blacked out 12/24-12/28/87.