



NORTHWEST

Frequent Flyer Timetable

May 1, 1987
May 31, 1987

Includes Northwests direct flights only.

CITIES SERVED BY NORTHWEST AIRLINES

CAK	Akron/Canton	MSN	Madison
ALB	Albany, NY	MNL	Manila
ABE	Allentown	MEM	Memphis
ANC	Anchorage	MIA	Miami
ATW	Appleton	MKE	Milwaukee
ATL	Atlanta	MSP	Minneapolis/St. Paul
AUS	Austin, TX	MOT	Minot
BWI	Baltimore	MSO	Missoula
BKK	Bangkok	MOB	Mobile/Pascagoula
BTR	Baton Rouge	MLI	Moline
BIL	Billings	MBJ	Montego Bay
BHM	Birmingham	MGM	Montgomery
BIS	Bismarck/Mandan	YUL	Montreal, Canada
BOS	Boston	BNA	Nashville
BZN	Bozeman	MSY	New Orleans
BUF	Buffalo/Niagara Falls	JFK	New York (Kennedy)
CUN	Cancun	LGA	New York (LaGuardia)
CID	Cedar Rapids	EWK	New York (Newark)
CRW	Charleston, WV	OKA	Okinawa, Ryukyo Is
CHA	Chattanooga	OKC	Oklahoma City
ORD	Chicago (O'Hare)	OMA	Omaha
MDW	Chicago (Midway)	SNA	Orange County
CVG	Cincinnati	MCO	Orlando
CLE	Cleveland	OSA	Osaka
CMH	Columbus, OH	GEN	Oslo
CPH	Copenhagen	PFN	Panama City
DFW	Dallas/Ft. Worth	PIA	Peoria
DAY	Dayton	PHL	Philadelphia
DEN	Denver	PHX	Phoenix
DSM	Des Moines	PIT	Pittsburgh
DTW	Detroit	PDX	Portland
DUB	Dublin	PVD	Providence
DLH	Duluth/Superior	PVR	Puerto Vallarta
EAU	Eau Claire	RAP	Rapid City
YEG	Edmonton	RNO	Reno
ERI	Erie	RST	Rochester, MN
FAR	Fargo/Moorhead	ROC	Rochester, NY
FLL	Fort Lauderdale	SMF	Sacramento
RSW	Fort Myers	MBS	Saginaw/Bay City/Midland
VPS	Fort Walton Beach	STL	St. Louis
FWA	Fort Wayne	SLC	Salt Lake City
FRA	Frankfurt	SAN	San Diego
PIK	Glasgow (Prestwick)	SFO	San Francisco
GCM	Grand Cayman, B.W.I.	SRO	Sarasota/Bradenton
GFK	Grand Forks	SEA	Seattle/Tacoma
GRR	Grand Rapids	SEL	Seoul
GTF	Great Falls	SHA	Shanghai
GRB	Green Bay	SNN	Shannon
GUM	Guam	SHV	Shreveport
GPT	Gulfport/Biloxi	FSD	Sioux Falls
BDL	Hartford/Springfield	SBN	South Bend
HLN	Helena	GEG	Spokane
HKG	Hong Kong	ARN	Stockholm
HNL	Honolulu	SYR	Syracuse
HOU	Houston (Hobby)	TPE	Taipei
IAH	Houston (Intercontinental)	TPA	Tampa
HSV	Huntsville/Decatur	NRT	Tokyo (Narita)
IND	Indianapolis	YYZ	Toronto, Canada
AZO	Kalamazoo	TUS	Tucson
MCI	Kansas City	TUL	Tulsa
TYS	Knoxville	IAD	Washington, D.C. (Dulles)
LSE	La Crosse	DCA	Washington, D.C. (Nat'l)
LAS	Las Vegas	CWA	Wausau/Stevens Point
LIT	Little Rock	PBI	West Palm Beach
LGW	London (Gatwick)	HPN	White Plains
LAX	Los Angeles	ICT	Wichita
SDF	Louisville, KY	YWG	Winnipeg

FM	TO	DEP	ARR	FLT	EQP	FREQ	ST	MI	FM	TO	DEP	ARR	FLT	EQP	FREQ	ST	MI
ABE	DTW	7:10a	8:34a	625	DC9			425	BIL	HLN	11:00a	11:54a	3844	AIR			174
	DTW	3:05p	4:32p	427	DC9			425		HLN	4:10p	5:04p	3812	AIR	X6		174
	DTW	6:00p	7:25p	839	DC9	X6		425		HVR	7:15a	8:48a	3890	AIR	X7		198
										HVR	2:05p	3:38p	3892	AIR	X6		198
ABR	MSP	6:15a	7:29a	3202	AIR			257		ISN	11:20a	1:57p	3804	AIR	X6		1284
	MSP	10:25a	11:40a	3272	AIR	67		257		ISN	8:55p	11:32p	3806	AIR	X6		284
	MSP	11:19a	12:29p	3204	AIR	X67		257		LWT	7:15a	7:57a	3890	AIR	X7		97
	MSP	3:30p	4:44p	3206	AIR	X6		257		LWT	2:05p	2:47p	3892	AIR	X6		97
	MSP	7:55p	9:00p	3208	AIR	X6		257		MLS	1:25p	3:10p	3884	AIR	X67		135
										MLS	5:35p	6:25p	3896	AIR			135
ALB	DTW	7:05a	8:37a	691	D9S			489		MSO	8:25a	10:12a	3830	AIR	X67		276
	DTW	2:50p	4:27p	687	D9S			489		MSO	12:55p	2:42p	3832	AIR			276
	DTW	5:55p	7:25p	463	D9S	X6		489		MSO	4:35p	5:57p	3864	AIR			276
										MSP	8:30p	10:25p	3848	AIR	X6		276
										MSP	9:30a	12:15p	682	72S			748
ALO	MSP	6:25a	7:20a	2608	AIR	X7		166		MSP	1:25p	4:10p	1278	D9S			748
	MSP	10:35a	11:30a	2610	AIR	X7		166		MSP	6:20p	9:05p	778	72S			748
	MSP	3:40p	4:35p	2612	AIR	X6		166		OLF	1:00p	2:32p	3872	AIR	X67		212
	MSP	7:55p	8:50p	2614	AIR	X6		166		OLF	6:00p	7:40p	3874	AIR	X7		212
										SDY	11:20a	12:24p	3804	AIR	X6		245
										SDY	8:55p	9:59p	3806	AIR			245
ANC	LAX	6:55a	3:10p	63	72S		1	2345	BIS	ISN	6:30a	7:23a	3803	AIR	X67		166
	SEA	6:55a	11:00a	63	72S			1448		ISN	4:45p	5:38p	3807	AIR	X6		166
APN	DTW	7:20a	8:25a	2740	AIR	X7		198		MOT	1:40p	2:08p	313	72S			105
	DTW	12:35p	1:40p	2732	AIR	X7		198		MSP	6:15a	7:23a	701	72S			386
	DTW	5:35p	6:40p	2783	AIR	X7		198		MSP	11:20a	12:28p	763	D9S			386
	DTW	5:45p	6:50p	2783	AIR	X67		198		MSP	3:45p	4:55p	322	72S			386
										MSP	4:20p	5:31p	696	D9S	X6		386
ARN	CPH	11:45a	12:55p	31	D10	567		342	BJI	MSP	6:10a	7:29a	3232	AIR	X7		199
	JFK	11:45a	4:00p	31	D10	567		13921		MSP	12:00m	12:55p	3234	AIR			199
	MSP	11:45a	8:30p	31	D10	567		24250		MSP	3:25p	4:50p	3236	AIR			199
										MSP	7:25p	8:30p	3238	AIR			199
														EFF. 5/29			
ATL	DTW	7:00a	8:44a	490	DC9	X7		595	BKK	MSP	11:00a	8:50p	28	747	124	2	8289
	DTW	10:40a	12:24p	492	D9S			595		NRT	11:00a	6:30p	28	747	124	2	2887
	DTW	2:45p	4:26p	494	D9S			595		SFO	11:00a	1:35p	28	747	124	1	7925
	DTW	6:40p	8:25p	1106	D9S	X6		595	BKX	MSP	6:30a	7:24a	3210	AIR	X7		182
	MEM	7:45a	7:54a	821	D9S			332		MSP	4:33p	5:28p	3212	AIR	X6		182
	MEM	11:35a	11:44a	823	D9S			332									
	MEM	3:00p	3:07p	825	D9S			332	BLI	SEA	6:15a	6:46a	1700	AIR	X7		94
	MEM	6:45p	6:50p	827	DC9			332		SEA	9:25a	9:58a	1858	AIR	7		94
	MSP	7:15a	8:49a	717	727			906		SEA	2:38p	3:08p	1994	AIR			94
	MSP	12:05p	1:35p	762	D9S			906	BNA	DTW	8:50a	11:10a	428	DC9			457
	MSP	7:10p	8:45p	764	D9S			906		DTW	10:10a	12:28p	464	DC9			457
										DTW	2:10p	4:34p	948	DC9			457
										DTW	5:45p	8:07p	418	72S	X6		457
ATW	DTW	9:20a	11:38a	1400	CVR			296		MEM	7:00a	7:50a	991	72S			200
	DTW	6:15p	8:16p	299	DC9	X6		296		MEM	10:50a	11:39a	1069	DC9			200
	MSP	7:20a	8:22a	1401	CVR	X7		236		MEM	2:15p	2:59p	203	D9S			200
	MSP	10:25a	11:27a	1481	CVR			236		MEM	6:15p	7:07p	891	D9S			200
	MSP	4:25p	5:30p	1407	CVR			236	ATY	MSP	6:30a	7:29a	3270	AIR	X67		193
	MSP	7:10p	8:10p	1409	CVR	X6		236		MSP	10:40a	12:29p	3204	AIR	X67		193
										MSP	10:45a	11:40a	3204	AIR	67		193
										MSP	2:44p	4:44p	3206	AIR			193
AUS	MEM	10:05a	11:32a	486	DC9			556	AUS	MEM	1:30p	2:57p	864	DC9			556
	MEM	5:47p	7:10p	868	DC9			556		MEM	5:47p	7:10p	868	DC9			556
AZO	DTW	7:00a	7:35a	522	D9S	X7		113									
	DTW	8:05a	8:41a	382	72S			113	BDL	DTW	7:10a	8:50a	347	D9S			548
	DTW	10:40a	11:15a	938	CVR			113		DTW	10:40a	12:20p	693	D9S			548
	DTW	2:30p	3:05p	488	D9S			113		DTW	2:45p	4:30p	611	D9S			548
	DTW	5:20p	6:05p	2823	AIR	X6		113		DTW	5:15p	7:02p	183	D9S			548
	DTW	6:35p	7:10p	263	DC9			113		DTW	6:35p	8:22p	229	72S	X6		548
										MSP	6:50a	8:40a	675	DC9	X7		1050
										MSP	4:05p	5:55p	373	DC9			1050
BHM	MEM	7:00a	7:47a	959	D9S			211									
	MEM	10:45a	11:32a	632	72S			211	BIL	BTM	8:25a	9:51a	3830	AIR	67		191
	MEM	2:10p	2:57p	996	D9S			211		BTM	8:40a	10:18a	3842	AIR	X67		191
	MEM	5:55p	6:44p	1025	D9S			211		BTM	11:00a	12:38p	3844	AIR			191
	MEM	9:20p	10:03p	978	D9S	X6		211		BTM	3:50p	5:21p	3846	AIR	X6		191
										BTM	8:30p	9:31p	3848	AIR	X6		191
										BZN	9:25a	9:10a	3830	AIR			126
										BZN	12:55p	1:40p	3832	AIR			126
										BZN	3:50p	4:35p	3846	AIR	X6		126
										BZN	3:55p	4:30p	702	72S			126
										GDV	1:25p	2:33p	3884	AIR	X67		201
										GDV	5:35p	7:12p	3886	AIR			201
										GEG	10:45a	10:58a	1281	D9S			445
										GGW	1:00p	1:55p	3874	AIR	X67		189
										GGW	6:00p	7:07p	3874	AIR			189
										GTF	7:00a	7:55a	3860	AIR	X67		177

FM	TO	DEP	ARR	FLT	EQP	FREQ	ST	MI	FM	TO	DEP	ARR	FLT	EQP	FREQ	ST	MI	
BTM	BIL	6:05p	7:30p	3857	AIR		1	191	CLE	MSP	5:15p	6:05p	1064	D95		622		
	GEG	10:00a	10:45a	3830	AIR	67		265		ORD	11:05a	11:19a	157	D95		316		
	GEG	10:30a	10:44a	3842	AIR	X67		265		ORD	8:55p	9:09p	159	D95		316		
	GEG	5:35p	5:49p	3846	AIR	X6		265										
BTR	MEM	7:00a	8:02a	818	D95	X7		319	CMH	CVG	6:45a	7:16a	858	D95		116		
	MEM	7:00a	8:02a	834	D95	7		319		DTW	6:54a	7:40a	952	DC9	X7	156		
	MEM	10:35a	11:35a	866	DC9			319		DTW	7:55a	8:45a	1088	D95		156		
	MEM	2:05p	3:07p	1070	DC9			319		DTW	10:20a	11:20a	2781	AIR		156		
	MEM	5:45p	6:45p	794	DC9			319		DTW	11:42a	12:30p	448	DC9		156		
BUF	DTW	7:55a	8:52a	563	72S			240		DTW	2:25p	3:15p	768	D95		156		
	DTW	11:25a	12:22p	171	D95			240		DTW	3:35p	4:35p	2729	AIR	X6	156		
	DTW	3:35p	4:36p	261	D95			240		DTW	4:40p	8:30p	498	DC9	X6	156		
	DTW	5:55p	6:51p	443	72S			240		MEM	6:45a	7:58a	858	D95		518		
BUR	SFO	6:55a	8:03a	1901	AIR	X7		326		MEM	11:0a	11:37a	160	DC9	X7	518		
	SFO	8:55a	10:02a	1707	AIR	X67		326		MEM	11:0a	11:37a	877	DC9	7	518		
	SFO	9:55a	11:04a	1715	AIR	X6		326		MEM	6:40p	7:11p	989	D95		518		
	SFO	11:55a	1:05p	1911	AIR	X7		326		MSP	5:40a	8:32a	1000	D95	X7	627		
	SFO	1:55p	3:02p	1905	AIR	X6		326		MSP	1:15p	5:05p	503	D95		627		
	SFO	2:55p	4:00p	1721	AIR	X6		326										
BWI	DTW	7:00a	8:26a	165	72S			409	CMX	DTW	6:25a	8:50a	2801	AIR	6	1	425	
	DTW	11:05a	12:28p	1029	D95			409		DTW	6:30a	8:50a	2860	AIR	X6	1	425	
	DTW	2:55p	4:22p	277	72S			409		DTW	12:45p	3:15p	2755	AIR	X6	1	425	
	DTW	5:58p	7:25p	449	D95	X6		409		DTW	4:55p	7:40p	2751	AIR	X6	1	425	
BZN	BIL	2:30p	3:09p	3831	AIR			126	COU	MEM	6:45a	7:57a	2546	AIR	X7	288		
	BIL	5:10p	5:42p	778	72S			126		MEM	10:25a	11:45a	2544	AIR	X7	288		
	BIL	8:00p	8:39p	3839	AIR			126		MEM	2:00p	3:15p	2542	AIR	X7	288		
	GEG	9:20a	10:15a	3830	AIR	X67		126		MEM	5:40p	6:55p	2540	AIR	X6	288		
	GEG	1:50p	2:45p	3832	AIR			328										
	GEG	4:50p	5:49p	3846	AIR	X6		328	CPH	ARN	8:50a	10:00a	30	D10	567	342		
	HLN	8:45p	9:11p	503	D95			874			JFK	1:50p	4:00p	31	D10	567	3856	
	MSP	9:25a	12:20p	504	D95			874		MSP	1:50p	8:30p	31	D10	567	1	4281	
	MSP	5:10p	9:05p	778	72S			874										
CAK	DTW	7:50a	8:37a	423	DC9			134	CRW	DTW	7:15a	8:32a	1481	CVR	X7	281		
	DTW	2:10p	2:56p	1455	CVR			134		DTW	3:05p	4:25p	1485	CVR		281		
	DTW	5:55p	6:45p	1457	CVR			134		DTW	5:55p	7:12p	1487	CVR		281		
CCR	LAX	6:55a	8:12a	1960	AIR	X67		346	CUN	MEM	2:40p	6:00p	936	D95	X34	984		
	LAX	8:25a	9:40a	1966	AIR	6		346	CVG	CMH	10:15p	10:50p	1025	D95		116		
	LAX	10:08a	11:20a	1892	AIR	X6		346		DTW	6:45a	7:39a	200	D95	X7	230		
	LAX	11:28a	12:38p	1964	AIR	7		346		DTW	10:50a	11:40a	648	DC9		230		
	LAX	1:20p	2:29p	1870	AIR	7		346		DTW	2:30p	3:18p	626	DC9		230		
CGI	MEM	7:00a	7:53a	2362	AIR	X7		152		MEM	7:25p	8:26p	268	D95	X6	230		
	MEM	10:05a	11:24a	2378	AIR			152		MEM	7:45a	7:58a	858	D95		403		
	MEM	2:17p	3:10p	2444	AIR			152		MEM	11:30a	11:43a	849	DC9		403		
	MEM	5:46p	6:39p	2354	AIR	X6		152		MEM	6:40p	6:50p	851	DC9		403		
CHA	MEM	7:50a	7:45a	949	DC9			271		MSP	7:55a	8:40a	1057	DC9		596		
	MEM	3:00p	2:58p	861	DC9			271	CWA	DTW	9:10a	11:32a	1430	CVR		363		
	MEM	6:45p	6:40p	1199	DC9			271		DTW	6:10p	8:30p	1494	CVR	X6	363		
CID	DTW	6:00a	8:55a	962	D95	X7		430		MSP	6:25a	7:24a	3261	AIR	X7	175		
	DTW	1:00p	3:13p	441	D95	X7		430		MSP	7:35a	8:27a	1431	CVR		175		
	DTW	6:15p	8:28p	462	DC9	X7		430		MSP	10:50a	11:25a	1470	CVR		175		
	MLI	6:00a	6:24a	962	D95	X7		69		MSP	3:50p	4:44p	3265	AIR	X7	175		
	MLI	10:50a	11:14a	627	D95	X7		69		MSP	3:50p	5:28p	1437	CVR		175		
	MLI	3:00p	3:24p	815	D95			69		MSP	7:55p	8:45p	1439	CVR	X6	175		
	MLI	11:15p	11:37p	566	D95			69	DAY	DTW	7:40a	8:34a	1470	CVR	X7	166		
	MSP	7:50a	8:42a	601	D95			221		DTW	10:40a	11:32a	1472	CVR	X6	166		
	MSP	10:10a	11:10a	993	CVR			221		DTW	2:25p	3:20p	1474	CVR		166		
	MSP	11:20a	12:20p	2602	AIR	X7		221		DTW	5:50p	6:44p	1476	CVR		166		
	MSP	3:35p	4:35p	2604	AIR	X6		221		MSP	7:50p	8:30a	1041	DC9		574		
	MSP	5:00p	5:52p	324	D95			221		MSP	5:00p	5:30p	660	DC9		574		
	MSP	8:00p	8:49p	604	D95			221	DFW	DTW	8:00a	11:20a	690	D95		987		
CIU	DTW	6:35a	8:25a	2740	AIR	X7		1	283		DTW	11:45a	3:09p	690	D95		987	
	DTW	11:50a	1:40p	2732	AIR			1	283		MEM	4:00p	8:12p	694	D95	X6	987	
	DTW	4:50p	6:40p	2783	AIR	7		1	283		MEM	7:00a	8:17a	830	DC9	X7	431	
	DTW	5:00p	6:50p	2783	AIR	X67		1	283		MEM	10:40a	11:54a	832	72S		431	
CLE	BOS	4:30p	6:02p	1656	D95			563		MEM	5:15p	6:37p	836	72S		431		
	DTW	7:00a	7:40a	491	D95	X7		95		MEM	8:15p	9:33p	298	D95	X6	852		
	DTW	7:55a	8:38a	461	72S			95		MSP	7:00a	9:05a	400	72S		852		
	DTW	8:00a	8:40a	2848	AIR	X67		95		MSP	11:25a	1:31p	750	72S		852		
	DTW	9:00a	9:40a	2826	AIR	X67		95		MSP	3:40p	5:44p	404	D95		852		
	DTW	10:00a	10:40a	2741	AIR	X67		95		MSP	6:30p	8:34p	406	72S		852		
	DTW	11:00a	11:40a	2717	AIR	X7		95										
	DTW	11:55a	12:55p	818	D95			95		DLH	MSP	6:45a	7:22a	401	72S		144	
	DTW	12:00p	12:40p	2798	AIR	X67		95			MSP	7:55a	8:35a	397	727		144	
	DTW	1:00p	1:40p	2727	AIR	X67		95			MSP	10:45a	11:25a	943	D95		144	
	DTW	2:00p	2:40p	2789	AIR	X6		95			MSP	1:00p	1:45p	2846	AIR		144	
	DTW	3:00p	3:40p	2704	AIR	X6		95			MSP	3:40p	4:20p	1081	727		144	
	DTW	3:45p	4:30p	1099	CVR			95			MSP	5:05p	5:49p	1082	CVR		144	
	DTW	4:00p	4:40p	2791	AIR	X6		95			MSP	6:40p	7:30p	2606	AIR	X6	144	
	DTW	5:00p	5:40p	2707	AIR	X6		95			MSP	8:13p	8:58p	2578	AIR	X6	144	
	DTW	6:00p	6:40p	2753	AIR	X6		95										
	DTW	6:50p	6:50p	287	727	X6		95		DSM	MEM	10:05a	11:29a	833	DC9		430	
	DTW	7:00p	7:40p	2784	AIR	X6		95			MSP	6:35a	7:25a	412	D95	X7	292	
	DTW	8:00p	8:40p	2796	AIR	X6		95			MSP	10:40a	11:28a	1042	DC9		232	
	MEM	7:20a	8:08a	828	DC9			623			MSP	3:15p	4:05p	946	D95		232	
	MEM	2:05p	2:53p	589	DC9			623			MSP	4:40p	5:45p	3225	AIR		232	
	MEM	6:25p	7:13p	819	D95			623			MSP	7:10p	8:11p	1084	CVR	X6	232	
	MSP	7:40a	8:30a	781	D95			622			MSP	8:10p	9:00p	688	DC9		232	
	MSP	10:25a	11:15a	1044	D95			622										

FM	TO	DEP	ARR	FLT	EQP	FREQ	ST	MI	FM	TO	DEP	ARR	FLT	EQP	FREQ	ST	MI	
DFW	DTW	8:00a	11:20a	690	D95			987	DTW	CLE	6:00p	6:40p	2794	AIR	X6		95	
	DTW	11:45a	3:09p	690	D95			987		CLE	7:00p	7:40p	2795	AIR	X6		95	
	DTW	4:00p	8:12p	694	D95	X6		987		CLE	9:00a	9:00a	2758	AIR	X67		1556	

FM	TO	DEP	ARR	FLT	EQP	FREQ	ST	MI	FM	TO	DEP	ARR	FLT	EQP	FREQ	ST	MI	FM	TO	DEP	ARR	FLT	EQP	FREQ	ST	MI									
DTW	LAX	5:30p	7:10p	1649	D10			1979	DTW	PVD	4:20p	5:57p	954	DC9			614	EVV	MEM	5:30p	6:35p	242Z	AIR			247									
LAX	8:00p	9:45p	339	57	X6			1979	PVD	9:20p	10:53p	262	D9S	X6		614	MEM	8:55p	10:00p	242Z	AIR	X6			247	GEG	BZN	5:00p	7:47p	3839	AIR		1	328	
LGA	7:00a	8:29a	520	D9S	X67			501	PVR	7:00a	11:35a	291	72S	36		1957	MEM	8:55p	10:00p	242Z	AIR	X6			247	GEG	GTf	8:30a	10:43a	3861	AIR	X7	289		
LGA	8:30a	10:00a	522	D9S				501	ROR	9:25a	10:28a	1090	DC9	X7		2196	MEM									289	GEG	GTf	11:05a	11:48a	3865	AIR		289	
LGA	9:30a	11:00a	524	D9S				501	ROC	12:20p	1:24p	196	D9S			296	MEM									289	GEG	GTf	6:30p	8:43p	3863	AIR	X6	289	
LGA	12:10p	1:40p	122	75T				501	ROC	4:10p	5:05p	392	D9S			296	MEM									289	GEG	GTf	7:00p	9:49p	3865	AIR	6	1	289
LGA	2:35p	4:01p	536	D9S	X6			501	ROC	9:25p	10:28p	466	D9S			296	MEM									289	GEG	GTf	8:30a	11:23a	3861	AIR	X7	1	271
LGA	5:50p	7:20p	440	75T				501	RSW	8:50a	12:33a	403	72S			1065	MEM									289	GEG	HLN	11:05a	20:09	3835	AIR		1	271
LGA	5:15p	6:50p	504	D9S				501	SAN	9:45a	11:04a	285	72T			296	MEM									289	GEG	HLN	7:15p	9:25p	3815	AIR	X6	271	
LGA	6:10p	7:45p	176	D9S				501	SAN	7:55p	9:00p	287	72T			1956	MEM									289	GEG	MSP	8:50a	10:40a	3855	AIR	X67	169	
LGA	9:00p	10:29p	6	72S				501	SBN	9:30a	9:22a	1195	DC9	X7		1956	MEM									289	GEG	MSP	11:25a	1:15p	3831	AIR		169	
LGW	4:15p	7:10a	48	747		1	3786	SBN	10:5p	12:57p	651	DC9			157	MEM										289	GEG	MSP	3:15p	5:05p	3857	AIR		169	
MBS	9:45a	10:22a	1088	D9S				98	SBN	5:25p	5:12p	445	DC9			157	MEM									289	GEG	MSP	5:00p	6:50p	3839	AIR		169	
MBS	12:15p	12:55p	2702	AIR				98	SBN	8:10p	7:57p	447	D9S	X6		157	MEM									289	GEG	MSP	7:00p	8:50p	3839	AIR		169	
MBS	4:06p	4:46p	2720	AIR				98	SDF	1:00p	2:08p	621	DC9			106	MEM									289	GEG	MSP	12:00p	4:22p	1057	D9S		1175	
MBS	5:10p	5:49p	537	72S				98	SDF	5:30p	6:38p	259	DC9			306	MEM									289	GEG	SEA	7:15a	8:05p	1279	D9S		223	
MBS	8:00p	8:40p	366	72S				98	SDF	8:05p	9:13p	789	D9S	X6		306	MEM									289	GEG	SEA	11:25a	12:10p	1281	D9S		223	
MBS	9:15p	9:49p	243	72S				98	SEA	9:45a	11:01a	579	75T			1927	MEM									289	GEG	SEA	3:15p	4:07p	1285	D9S		223	
MCI	10:00a	10:52a	257	D9S				630	SEL	9:00p	9:40p	581	75T	X6		1927	MEM									289	GEG	SEA	5:00p	5:52p	1287	D9S		223	
MCI	1:20p	2:12p	818	D9S				630	SEL	11:5p	DISC	5/9				16623	MEM									289	GEG	SEA	7:00p	7:50p	1289	D9S		223	
MCI	5:20p	6:00p	261	D9S				630	SEL	11:5p	7:00p	5	747	46	16623	MEM										289	GEG	JFK	2:10p	4:00p	37	747	6	3686	
MCI	8:05p	8:57p	263	DC9	X6			630	SFO	9:40a	11:14a	341	75T			2079	MEM								289	GEG	MSP	6:30a	7:24a	720	72S		284		
MCO	9:55a	12:17p	409	72S				957	SFO	11:5p	3:00p	343	72S			2079	MEM									289	GEG	MSP	10:55a	11:24a	3240	AIR	X67	284	
MCO	12:25p	2:47p	473	D9S	6			957	SFO	7:55p	9:50p	345	75T	X6		2079	MEM									289	GEG	MSP	11:20a	12:41a	593	D9S		284	
MCO	4:10p	6:32p	441	D9S				957	SFO	4:05p	6:15a	42	D10	27	1	3401	MEM									289	GEG	MSP	4:00p	4:55p	605	D9S		284	
MCO	7:55p	10:15p	443	72S				957	SNO	9:40a	12:15p	461	72S			1023	MEM									289	GEG	MSP	4:39p	5:54p	3248	AIR	X6	284	
MEM	7:00a	7:44a	291	72S				610	SNN	12:00p	11:03p	103	D9S			440	MEM									289	GEG	MSP	8:05p	8:59p	599	D9S		284	
MEM	10:40a	11:24a	293	75T				610	SRL	5:10p	5:42p	465	D9S			440	MEM									289	GEG	MSP	8:05p	8:59p	599	D9S		284	
MEM	2:25p	3:10p	295	72S				610	STL	7:55p	8:30p	467	DC9			440	MEM									289	GEG	MSP	8:05p	8:59p	599	D9S		284	
MEM	5:00a	6:25p	297	75T				610	STL	5:50p	8:30p	467	DC9			440	MEM									289	GEG	MSP	8:05p	8:59p	599	D9S		284	
MEM	9:00p	9:45p	299	DC9	X6			610	SVR	8:35a	9:43a	952	DC9	X7		374	MEM								289	GEG	MSP	8:05p	8:59p	599	D9S		284		
MIA	9:45a	12:36p	523	72S				1146	SYR	12:40p	1:48p	364	D9S			374	MEM									289	GEG	MSP	8:05p	8:59p	599	D9S		284	
MIA	4:10p	7:00p	859	D9S				1146	SYR	4:10p	5:20p	768	D9S			374	MEM									289	GEG	MSP	8:05p	8:59p	599	D9S		284	
MKE	8:15a	8:10a	327	72T	X7			237	SYR	9:55p	10:13p	274	D9S			374	MEM									289	GEG	MSP	8:05p	8:59p	599	D9S		284	
MKE	9:40a	9:38a	563	72S				237	TOL	9:35a	10:05a	231	AIR			49	MEM									289	GEG	MSP	8:05p	8:59p	599	D9S		284	
MKE	1:00p	12:55p	425	72S				237	TOL	11:0p	1:40p	2633	AIR			49	MEM									289	GEG	MSP	8:05p	8:59p	599	D9S		284	
MKE	2:25p	2:20p	205	D9S				237	TOL	5:25p	5:55p	2637	AIR			49	MEM									289	GEG	MSP	8:05p	8:59p	599	D9S		284	
MKE	4:05p	3:59p	462	72S				237	TOL	8:10p	8:40p	2716	AIR			49	MEM									289	GEG	MSP	8:05p	8:59p	599	D9S		284	
MKE	8:25p	5:40p	275	75T				237	TOL	8:20p	9:50p	2639	AIR			49	MEM									289	GEG	MSP	8:05p	8:59p	599	D9S		284	
MKE	8:10p	8:10p	377	75T				237	TPA	10:00a	10:28p	481	72S			983	MEM									289	GEG	MSP	8:05p	8:59p	599	D9S		284	
MKE	9:20p	9:16p	435	D9S	X6			237	TPA	12:25p	3:54p	473	D9S	6	1	983	MEM									289	GEG	MSP	8:05p	8:59p	599	D9S		284	
MKG	9:35a	10:25a	2778	AIR	X7			161	TPA	4:20p	6:50p	483	D9S			983	MEM									289	GEG	MSP	8:05p	8:59p	599	D9S		284	
MKG	1:25p	2:15p	2775	AIR	X6			161	TPA	11:5p	9:15p	5	747	46	2	7536	MEM									289	GEG	MSP	8:05p	8:59p	599	D9S		284	
MKG	5:55p	6:45p	2737	AIR	X6			161	TVC	8:00a	9:20a	2869	AIR	X67	207	MEM										289	GEG	MSP	8:05p	8:59p	599	D9S		284	
MKG	8:15p	9:05p	2777	AIR	X6			161	TVC	9:35a	10:40a	2870	AIR	X6	207	MEM										289	GEG	MSP	8:05p	8:59p	599	D9S		284	

FM	TO	DEP	ARR	FLT	EOP	FRQ	ST	MI	FM	TO	DEP	ARR	FLT	EOP	FRQ	ST	MI	FM	TO	DEP	ARR	FLT	EOP	FRQ	ST	MI
HIB	MSP	625a	720a	2616	AIR	X7		174	INL	MSP	305p	415p	2576	AIR	X7		254	LAX	LAS	410p	500p	1956	AIR			236
MSP	1020a	1115a	2574	AIR	X6			174	MSP	725p	858p	2578	AIR	X6			254	LAX	LAS	510p	559p	1862	AIR			236
MSP	1038a	1228p	2618	AIR	X7			174	ISN	BIL	735a	810a	3803	AIR	X7		284	LAX	LAS	510p	559p	1958	AIR	X6		236
MSP	320p	415p	2620	AIR	X6			174	BIL	555p	630p	3807	AIR	X7		284	LAX	LAS	710p	759p	1762	AIR			236	
MSP	803p	858p	2622	AIR	X6			174	BIS	510a	556a	3800	AIR	X6		166	LAX	LAS	810p	859p	1722	AIR			236	
HKG	JFK	930a	255p	18	747	1		1867	BIS	215p	303p	3804	AIR	X6		166	LAX	LAS	910p	1020p	1984	AIR	X6		236	
LAX	1030a	1125a	2474	146	1	1		1747	IWD	MSP	720a	830a	2750	AIR	X6		187	LAX	LAS	1010p	1102p	1708	AIR	X6		236
NRT	830a	255p	18	747	1			1827	MSP	1200n	105p	2771	AIR	X6		187	LAX	LAS	1135p	1227a	1730	AIR	57		236	
SEA	1030a	1035a	20	747	257	1		1648	JAN	MEM	710a	758a	2460	AIR	X7		189	LAX	LGW	1105a	710a	44	747	1	5480	
SEL	1038a	240p	20	747	257	1		1290	MEM	1015a	1110a	2464	AIR	X7		189	LAX	MEM	925a	250p	550	725			1619	
SEL		DISC. 5/8							MEM	100p	627p						1619	LAX	MEM	100p	627p				1619	
SEL	1030a	240p	24	747	146	1		1290	MEM	425p	945p	554	725	X6		1619	LAX	MFR	300p	537p	1933	AIR	1		630	
SEL		DISC. 5/9							MEM	MKE	1255p	640p	328	727	1756	LAX	MRK	238p	331p	1841	AIR			2767		
SEL	1030a	340p	20	747	257	1		1290	MEM	540p	635p	2470	AIR	X6		189	LAX	MRY	600p	655p	1845	AIR			2636	
SEL		EFF. 5/10							MEM	858p	953p	2474	AIR	X6		189	LAX	MPF	100p	655p	1847	AIR			2636	
SEL	1030a	340p	24	747	146	1		1290									LAX	EFF. 5/2								
HLN	BIL	710a	758a	3841	AIR	X7		174	JFK	ARN	640p	100a	30	D10	456	1	3921	MSP	700a	1225p	300	727			1536	
BIL	820a	908a	3811	AIR	X7			174	BOS	600p	714p	34	D10	247	187		MSP	700a	1225p	300	727			1536		
BIL	1138a	1226p	3861	AIR	X7			174	BOS	600p	714p	46	D10	247	187		MSP	1105a	425p	44	D10			1536		
BIL	645p	733p	3857	AIR	X7			174	CPH	640p	850p	30	D10	456	3856		MSP	305p	820p	306	D10			1536		
BIL	940p	1028p	3815	AIR	X6			174	DTW	600p	756p	39	72S	X13	509		MSP	500p	1015p	308	72S			1536		
BZN	825a	855a	504	D95				68	DTW	600p	805a	43	72S	X13	509		NRT	1240p	355p	1	747	145	5451	5451		
GEG	920a	1020a	3900	AIR	X6			271	GEN	700p	810a	36	747	5	3886		OAK	1050a	1150a	1897	AIR	6		337		
GEG	950a	1044a	3842	AIR	X67			271	HKG	1200n	820p	17	747	4	18067		OAK	50a	125a	1815	AIR	X6		337		
GEG	220p	238p	3835	AIR	X6			271	MEM	545p	715p	71	72S	964		OAK	1250p	15a	1707	AIR	X6			337		
GEG	520p	538p	3812	AIR	X6			271	MSP	630p	830p	31	72S	1028		OAK	255p	358p	1805	AIR	X6			337		
GTF	920a	948a	3900	AIR	X6			67	NRT	1200n	245p	17	747	1678		OAK	425p	528p	1919	AIR	X6			337		
MSP	125p	1220p	504	D95				1	PIK	600p	700a	34	D10	247	1	3216	OAK	625p	726p	1773	AIR	X6			337	
HNL	LAX	345p	1155p	84	747	2556		3972	PIK	705p	615a	38	D10	36	3226		OAK	90p	1011p	1747	AIR	X6			337	
MSP	345p	655a	84	747	1	3972			SNN	705p	615a	42	D10	27	3082		OAK	100p	1111p	1743	AIR	57		337		
NRT	1010a	1255p	9	747	5	3818			TPA	630p	905p	37	72S	26	1005		OSA	1240p	645p	1	747	2	1	5719		
ORT	900a	1200p	15	747	4	3812			JLN	MEM	645a	757a	2522	AIR	X7	291	PHX	1235p	144p	1712	AIR			370		
SEA	105p	925p	86	D10	2677	2398			MEM	1025a	1145a	2524	AIR	X7	291	PHX	750p	856p	1912	AIR	6			370		
SEA	355p	1145p	62	D10	2398				MEM	200p	35p	2520	AIR	X6	291	PHX	1055p	1155p	1827	AIR	X6			370		
HON	MSP	553a	724a	3210	AIR	X7		1	MEM	540p	655p	2526	AIR	X6	291	RNO	650p	758p	1903	AIR	X6			390		
MSP	313p	528p	3212	AIR	X6	2	249		JMS	MSP	610a	728a	3242	AIR	X7	299	SAN	1200n	1235p	73	72S			109		
HOU	DTW	755a	1125a	270	D95	1093			MSP	329p	448p	3244	AIR	X6	299	SAN	130p	205p	1864	AIR	6			109		
DTW	1150a	322p	272	D95	1093				JXN	DTW	1145a	1215p	2761	AIR	X7	57	SAN	143p	223p	1902	AIR	6			109	
MEM	445p	820p	274	D95	1093				DTW	425p	455p	2763	AIR	X6	57	SAN	255p	333p	1870	AIR	6			109		
MEM	700a	820a	250	D95	484				LAN	DTW	645a	725a	2810	AIR	X67	74	SAN	300p	338p	1722	AIR	X6			109	
MEM	1040a	1155a	1066	D95	484				DTW	645a	725a	2810	AIR	X67	74	SAN	455p	529p	1832	AIR	X6			109		
MEM	530p	710p	278	D95	484				DTW	755a	835a	2868	AIR	X6	74	SAN	735p	808p	1930	AIR	6			109		
MEM	825p	942p	1076	D95	X6	484			DTW	815a	830a	2801	AIR	X6	74	SAN	835p	908p	1924	AIR	6			109		
HPN	DTW	720a	900a	627	D95	X7		505	DTW	1045a	1120a	2861	AIR	X6	74	SAN	1050p	1125p	1834	AIR	X6			109		
DTW	229p	411p	695	D95	X6	505			DTW	240p	320p	2799	AIR	X6	74	SAN	1055p	1130p	1840	AIR	X6			109		
DTW	629p	809p	435	D95	X6	505			DTW	340p	420p	2867	AIR	X6	74	SAN	1055p	1130p	1840	AIR	X6			109		
HSV	MEM	715a	758a	960	D95	X7		184	DTW	510p	550p	2709	AIR	X6	74	SAN	950p	1051p	1823	AIR	X6			315		
MEM	1035a	1118a	852	D95	X6	184			DTW	620p	700p	2715	AIR	X6	74	SEA	920a	1145a	64	72S			97			
MEM	205p	252p	812	D95	X6	184			DTW	745p	820p	2817	AIR	X6	74	SEA	700p	915p	1723	AIR	X6			97		
MEM	555p	638p	881	D95	X6	184			LAS	LAX	630a	723a	1739	AIR	X6	2156	SEL	200p	650p	23	747	146	5976			
MEM	915p	956p	558	D95	X6	184			LAX	LAX	730a	822a	1725	AIR	7	236		EFF. 5/1								
HVR	BIL	900a	1026a	3891	AIR	X7		1	LAX	LAX	930a	1023a	1801	AIR	X6	236	SFO	1030a	1128p	1925	AIR	X6			337	
BIL	350p	518p	3893	AIR	X6	1	198		LAX	LAX	930a	1023a	1801	AIR	X6	236	SFO	1100a	105p	1727	AIR	X4			337	
IAD	DTW	710a	835a	767	DC9	383			LAX	LAX	930a	1023a	1801	AIR	X6	236	SFO	1200n	105p	1727	AIR	X4			337	
DTW	520p	644p	789	D95	383				LAX	LAX	1030a	1126a	1853	AIR	6	236	SFO	1200n	105p	1727	AIR	X4			337	
DTW	720p	844p	895	DC9	X6	383			LAX	LAX	1030a	1126a	1853	AIR	6	236	SFO	1200n	105p	1727	AIR	X4			337	
MEM	1030a	1130a	867	D95	X6	742			LAX	LAX	1030a	1126a	1853	AIR	6	236	SFO	1200n	105p	1727	AIR	X4			337	
MEM	200p	300p	897	DC9	742				LAX	LAX	1030a	1126a	1853	AIR	6	236	SFO	1200n	105p	1727	AIR	X4			337	
MEM	555p	657p	863	D95	742				LAX	LAX	1130a	1225p	1709	AIR	X6	236	SFO	100p	206p	1929	AIR	X6			337	
MSP	700a	832a	27	D95	908				LAX	LAX	1130a	1225p	1709	AIR	X6	236	SFO	130p	233p	1767	AIR	X37			337	
MSP	1205p	135p	1092	DC9	908				LAX	LAX	1130p	1219p	1711	AIR	X3	236	SFO	230p	333p	1769	AIR	X37			337	
MSP	420p	552p	1001	D95	908				LAX	LAX	130p	221p	1827	AIR	X6	236	SFO	300p	406p	1933	AIR	X37			337	
PHL	1115p	1158p	1068	D95	134				LAX	LAX	230p	321p	1921	AIR	X6	236	SFO	1100p	1159p	1749	AIR	X6			337	
SEA	845a	1140a	19	757	2306				LAX	LAX	330p	421p	1719	AIR	X6	236	SFO	915a	1011p	1939	AIR	7		308		
IAH	MEM	700a	820a	875	DC9	X7		469	LAX	LAX	330p	421p	1719	AIR	X6	236	SJC	1048a	1148a	1801	AIR	X6			308	
MEM	1040a	1155a	958	D95	X7	469			LAX	LAX	330p	421p	1719	AIR	X6	236	SJC	1210p	107p	1839	AIR	X6			308	
MEM	550p	707p	878	D95	X7	469																				

FM	TO	DEP	ARR	FLT	EQ	FRQ	ST	MI	FM	TO	DEP	ARR	FLT	EQ	FRQ	ST	MI	FEM	TO	DEP	ARR	FLT	EQ	FRQ	ST	MI	MGM	MEM	TO	DEP	ARR	FLT	EQ	FRQ	ST	MI	
MEI	MEM	648a	745a	2480	AIR	X7		200	MGM	GTR	1245p	128p	2415	AIR			136	MGM	MSY	845a	952a	889	725	36		349	MGM	MEM	525p	642p	880	DC9			280		
	MEM	1037a	1134a	2482	AIR	X7		200		GTR	355p	457p	2411	AIR		1	136		MSY	1215p	120p	453	75Z	36		349	MEM	PFN	945p	988p	989	DC9			150		
	MEM	200p	257p	2484	AIR	X7		200		GTR	810p	853p	2441	AIR			136		MSY	350p	458p	295	72S	36		349											
	MEM	535p	632p	2486	AIR	X6		200		GTR	1045p	1144p	2417	AIR	X6	1	136		MSY	750p	854p	811	72S	36		349	MHE	MSP	520a	724a	3210	AIR	X7	2	251		
										HOU	840a	1011a	487	D95			484		MWA	855a	1026a	2345	AIR	X7	1	194		MSP	955p	528p	3212	AIR	X6	1	251		
MEM	ATL	855a	1056a	820	D95			332		HOU	345p	517p	812	D95			484		MWA	1230p	130p	235	AIR	X7	1	194											
	ATL	1225p	226p	822	D95			332		HOU	940p	1051p	851	D95			484		MWA	845p	1026p	2361	AIR	X6	1	194											
	ATL	355p	556p	824	DC9			332		HOU	1045p	1205a	637	D95	X6		484		MWA	750p	911a	2357	AIR	X6	1	194											
	ATL	745p	955p	826	DC9			332		HOU	1045p	1205a	637	D95	X6		484		MWA	750p	911a	2357	AIR	X6	1	194											
	AUS	905a	1043a	646	DC9			586		HOU	355p	517p	887	D95			484		MWA	845p	1026p	2361	AIR	X6	1	194											
	AUS	340p	518p	861	DC9			586		HOU	1045p	1205a	637	D95	X6		484		MWA	750p	911a	2357	AIR	X6	1	194											
	AUS	805p	943p	795	DC9			556		HOU	1045p	1205a	637	D95	X6		484		MWA	750p	911a	2357	AIR	X6	1	194											
	BHM	905a	955a	715	72S			511		HOU	1045p	1205a	637	D95	X6		484		MWA	750p	911a	2357	AIR	X6	1	194											
	BHM	1245p	132p	958	D95			211		HOU	1045p	1205a	637	D95	X6		484		MWA	750p	911a	2357	AIR	X6	1	194											
	BHM	420p	511p	1024	D95			211		HOU	1045p	1205a	637	D95	X6		484		MWA	750p	911a	2357	AIR	X6	1	194											
	BHM	800p	848p	465	D95			211		HOU	1045p	1205a	637	D95	X6		484		MWA	750p	911a	2357	AIR	X6	1	194											
	BHM	1005p	1117p	828	D95	X6		211		HOU	1045p	1205a	637	D95	X6		484		MWA	750p	911a	2357	AIR	X6	1	194											
	BNA	850a	940a	464	DC9			200		HOU	1045p	1205a	637	D95	X6		484		MWA	750p	911a	2357	AIR	X6	1	194											
	BNA	1240p	129p	948	DC9			200		HOU	1045p	1205a	637	D95	X6		484		MWA	750p	911a	2357	AIR	X6	1	194											
	BNA	410p	500p	418	72S			200		HOU	1045p	1205a	637	D95	X6		484		MWA	750p	911a	2357	AIR	X6	1	194											
	BNA	420p	500p	578	D95	6		200		HOU	1045p	1205a	637	D95	X6		484		MWA	750p	911a	2357	AIR	X6	1	194											
	BNA	755p	840p	882	72S			200		HOU	1045p	1205a	637	D95	X6		484		MWA	750p	911a	2357	AIR	X6	1	194											
	BNA	1040p	1124p	459	DC9	X6		200		HOU	1045p	1205a	637	D95	X6		484		MWA	750p	911a	2357	AIR	X6	1	194											
	BOS	1230p	410p	808	72S			1139		HOU	1045p	1205a	637	D95	X6		484		MWA	750p	911a	2357	AIR	X6	1	194											
	BOS	345p	720a	810	72S			1139		HOU	1045p	1205a	637	D95	X6		484		MWA	750p	911a	2357	AIR	X6	1	194											
	BTR	900a	1005a	829	DC9			319		HOU	1045p	1205a	637	D95	X6		484		MWA	750p	911a	2357	AIR	X6	1	194											
	BTR	1225p	132p	1069	DC9			319		HOU	1045p	1205a	637	D95	X6		484		MWA	750p	911a	2357	AIR	X6	1	194											
	BTR	405p	515p	897	DC9			319		HOU	1045p	1205a	637	D95	X6		484		MWA	750p	911a	2357	AIR	X6	1	194											
	BTR	815p	922p	860	D95			319		HOU	1045p	1205a	637	D95	X6		484		MWA	750p	911a	2357	AIR	X6	1	194											
	CGI	855a	952a	2377	AIR	X7		152		HOU	1045p	1205a	637	D95	X6		484		MWA	750p	911a	2357	AIR	X6	1	194											
	CGI	1240p	206p	2477	AIR	X6		152		HOU	1045p	1205a	637	D95	X6		484		MWA	750p	911a	2357	AIR	X6	1	194											
	CGI	345p	539p	2381	AIR	X6		152		HOU	1045p	1205a	637	D95	X6		484		MWA	750p	911a	2357	AIR	X6	1	194											
	CGI	420p	549p	2381	AIR	6		152		HOU	1045p	1205a	637	D95	X6		484		MWA	750p	911a	2357	AIR	X6	1	194											
	CGI	750p	843p	2357	AIR	X6		152		HOU	1045p	1205a	637	D95	X6		484		MWA	750p	911a	2357	AIR	X6	1	194											
	CHA	1235p	229p	1038	DC9			271		HOU	1045p	1205a	637	D95	X6		484		MWA	750p	911a	2357	AIR	X6	1	194											
	CHA	415p	613p	856	DC9			271		HOU	1045p	1205a	637	D95	X6		484		MWA	750p	911a	2357	AIR	X6	1	194											
	CHA	820p	1014p	851	DC9			271		HOU	1045p	1205a	637	D95	X6		484		MWA	750p	911a	2357	AIR	X6	1	194											
	CLE	845a	1128a	818	D95	X7		623		HOU	1045p	1205a	637	D95	X6		484		MWA	750p	911a	2357	AIR	X6	1	194											
	CLE	415p	658p	996	D95			623		HOU	1045p	1205a	637	D95	X6		484		MWA	750p	911a	2357	AIR	X6	1	194											
	CLE	815p	1052p	868	DC9			623		HOU	1045p	1205a	637	D95	X6		484		MWA	750p	911a	2357	AIR	X6	1	194											
	CMH	850a	1115a	448	DC9	X7		518		HOU	1045p	1205a	637	D95	X6		484		MWA	750p	911a	2357	AIR	X6	1	194											
	CMH	405p	630p	890	DC9			518		HOU	1045p	1205a	637	D95	X6		484		MWA	750p	911a	2357	AIR	X6	1	194											
	CMH	740p	1050p	1025	D95			518		HOU	1045p	1205a	637	D95	X6		484		MWA	750p	911a	2357	AIR	X6	1	194											
	COU	845a	955a	2547	AIR	X7		288		HOU	1045p	1205a	637	D95	X6		484		MWA	750p	911a	2357	AIR	X6	1	194											
	COU	1225p	145p	2541	AIR	X6		288		HOU	1045p	1205a	637	D95	X6																						

FM	TO	DEP	ARR	FLT	EOP	FRO	ST	MI	FM	TO	DEP	ARR	FLT	EOP	FRO	ST	MI	
MSP	SUX	125p	235p	2583	AIR			234	OKC	MEM	700a	814a	790	DC9			432	
	SUX	545p	655p	2585	AIR			234		MEM	205p	315p	824	DC9			432	
	SUX	945p	1055p	2587	AIR X6			234		MEM	555p	706p	1232	DC9			432	
	TPA	810a	1205p	701	72S			1307	OLF	BIL	600a	742a	3871	AIR	X6	1	212	
	TPA	115p	510p	703	72S			1307		BIL	242p	339p	3872	AIR	X67	1	212	
	TUS	930a	1050a	601	D9S			1298	OMA	MEM	955a	1127a	879	DC9			538	
	TUS	650p	805p	603	D9S			1298		MSP	625a	723a	502	72S			282	
	TVF	924a	1059a	3233	AIR			1	261		MSP	1120a	1220p	703	72S			282
	TVF	645p	755p	3239	AIR X6			261		MSP	135p	230p	320	D9S			282	
	YEG	650p	834p	1023	72S			1086		MSP	353p	450p	1080	72S			282	
	YWG	920a	1038a	781	D9S			394		MSP	820p	915p	1018	757			282	
	YWG	125p	243p	783	72S			394	ONT	SFO	640a	759a	1957	AIR	X7		363	
	YWG	635p	753p	785	72S			394		SFO	929a	1042a	1847	AIR	X7		363	
MSY	BHM	1205p	130p	2303	AIR X67			321		SFO	250p	400p	1945	AIR X6			363	
	BHM	700a	804a	290	72S			349		SFO	300p	411p	1947	AIR	6		363	
	MEM	1035a	1139a	808	72S			349	ORD	BOS	700a	1007a	1210	D9S X7			867	
	MEM	210p	315p	284	757			349		BOS	244p	553p	1652	D9S			867	
	MEM	550p	655p	296	72S X36			349		BOS	400p	710p	40	72S			867	
	MEM	550p	655p	894	72S	36		349		BOS	545p	855p	1216	D9S			867	
	MOB	230p	310p	2311	AIR	7		129		CLE	235p	442p	158	D9S			816	
	MOB	720p	758p	2307	AIR X6			129		DC	235p	512p	4	D9S	61		612	
	SHV	840a	955a	2300	AIR X67			271		DCA	700a	905a	160	DC9			235	
	SHV	1110a	1230p	2304	AIR X67			271		DTW	800a	1002a	162	72S X7			235	
	SHV	315p	440p	2306	AIR X6			271		DTW	900a	1105a	122	757	X7		235	
	SHV	635p	754p	2308	AIR X6			271		DTW	1025a	1221p	168	D9S			235	
MWA	MEM	630a	753a	2362	AIR X7			1	194		DTW	100p	300p	172	D9S			235
	MEM	1040a	1145a	2346	AIR X7			194		DTW	145p	345p	174	DC9			235	
	MEM	143p	310p	2356	AIR X7			194		DTW	314p	514p	176	D9S			235	
	MEM	518p	639p	2354	AIR X6			194		DTW	400p	602p	134	D9S X6			235	
NRT	BKK	555p	950p	27	747	1		2887		DTW	614p	824p	474	72S			235	
	BKK	600p	955p	27	747	37		2887		DTW	715p	922p	76	72S			235	
	DTW	330p	230p	12	747	146		6397		DUB	400p	800a	40	D10	56		2	3674
	GUM	930p	155a	27	747	5		1558		MEM	625a	755a	471	D9S			491	
		EFF. 5/8								MEM	1000a	1130a	553	72S			491	
	GUM	930p	155a	190	747	X156		1827		MEM	135p	305p	475	72S			491	
	HKG	455p	815p	17	747	5		1827		MEM	545p	715p	477	72S			491	
		EFF. 5/8								MEM	825p	955p	470	D9S X6			491	
	HKG	500p	820p	17	747	X5		1827		MIA	750a	1145a	583	D9S			1197	
	HNL	700p	700a	10	747			3818		MNL	1150a	905p	3	747			1	8129
	JFK	330p	255p	18	747			6745		MSP	700a	200a	125	757			334	
	LAX	400p	945a	2	747			5451		MSP	740a	901a	127	72S X67			334	
	MEM	400p	627p	2	747			16581		MSP	1000a	1116a	129	D9S			334	
	MNL	600p	905p	3	747			1893		MSP	1130a	1246p	1655	D9S			334	
		EFF. 5/2								MSP	1225p	142p	133	D9S			334	
	MNL	750p	1055p	27	747	6		1893		MSP	120p	234p	135	D9S			334	
	MSP	430p	430p	8	747			1950		MSP	314p	434p	137	757			334	
	MSP	830p	850p	28	747			1950		MSP	414p	534p	139	747			334	
	ORD	340p	105p	4	747			6274		MSP	500p	620p	177	D9S			334	
	OSA	450p	555p	7	747	27		288		MSP	530p	649p	143	747	46		334	
	OSA	450p	555p	11	747	1		288		MSP	615p	732p	207	72S			334	
	OSA	450p	555p	27	747	4		288		MSP	650p	807p	145	72S			334	
	OSA	500p	605p	11	747	6		288		MSP	745p	905p	147	757			334	
	OSA	540p	645p	1	747	3		288		NRT	1150a	230p	3	747			6274	
	OSA	540p	645p	1	747	5		288		SEA	915a	117a	75	72S			1720	
		EFF. 5/8								SEA	200p	600p	5	747	46		6538	
	SEA	430p	905a	8	747			4769		SEL	200p	700p	5	747	46		6538	
	SEL	1030a	1240p	191	747	34		765			EFF. 5/14							
		DISC. 5/7								SNN	400p	630a	40	D10	456			13591
	SEL	1030a	140p	191	747	34		765		TNA	625a	1145a	471	D9S			1	1012
		EFF. 5/13								TPE	200p	915p	5	747	46		1	7450
	SEL	440p	650p	9	747	4		765	OSA	DHL	125p	230p	12	747	46		1	8593
		DISC. 5/7								DHL	745p	815a	16	747			4102	
	SEL	440p	750p	9	747	4		765		LAX	125p	945a	2	747	15		1	5719
		EFF. 5/14								LAX	125p	627p	2	747	15		2	8606
	SEL	555p	805p	9	747	235		765		MSP	125p	433p	8	747	23		2	6161
		EFF. 5/5 thru 5/8								NRT	125p	235p	2	747	15		2	2888
	SEL	555p	905p	9	747	235		765		NRT	125p	235p	8	747	23		2	288
		EFF. 5/12								NRT	125p	235p	10	747	7		2	288
	SEL	600p	810p	9	747	6		765		OKA	125p	235p	12	747	46		2	752
		DISC. 5/9								NRT	730p	935p	7	747	25		752	
	SEL	600p	910p	9	747	6		765			EFF. 5/5							
		EFF. 5/10								OKA	730p	935p	11	747	1		1	7512
	SEL	700p	1010p	9	747	17		765		SEA	125p	905a	8	747	23		1	5025
		EFF. 5/11								TPE	730p	935p	1	747	3		1	1067
	SFO	830p	135p	28	747			5124	OSH	MKE	1105a	1120a	2557	AIR			41	
	SHA	530p	830p	77	747	46		1143		GMB	600a	625a	2663	AIR X7			79	
	TPE	555p	815p	1	747	X135		1341		MKE	125p	155p	2655	AIR	7		79	
		EFF. 5/8								MKE	230p	300p	2559	AIR X6			79	
	TPE	600p	820p	1	747	5		1341		MSP	620a	725a	2556	AIR X7			239	
		EFF. 5/8								MSP	1015a	1120a	2558	AIR X7			239	
	TPE	700p	920p	1	747	1		1341		MSP	505p	605p	2560	AIR X6			239	
OAK	LAX	647a	800a	1904	AIR X67			337	OWB	MEM	700a	805a	2364	AIR X7			243	
	LAX	705a	815a	1908	AIR	6		337		MEM	1040a	1145a	2366	AIR X7			243	
	LAX	825a	934a	1808	AIR X6			337		MEM	200p	305p	2368	AIR X7			243	
	LAX	915a	1020a	1860	AIR X6			337		MEM	540p	645p	2370	AIR X6			243	
	LAX	935a	1042a	1810	AIR X6			337	PAH	MEM	713a	805a	2412	AIR X7			154	
	LAX	1220p	124p	1898	AIR	6		337		MEM	1025a	1118a	2432	AIR			154	
	LAX	120p	229p	1818	AIR X6			337		MEM	217p	310p	2356	AIR			154	
	LAX	255p	404p	1812	AIR X6			337		MEM	530p	623p	2438	AIR			154	
	LAX	925p	1028p	1734	AIR X6			337	PBI	DTW	1250p	330p	785	72S			1087	
	LAX	1035p	1138p	1838	AIR	57		337		MEM	1000a	1110a	972	D9S			822	
OKA	MSP	1035a	433p	8	747	6		2	6905		MEM	510p	623p	674	D9S			822
	MSP	1045a	433p	8	747	23		3	6905	PBI	DTW	1250p	330p	785	72S			1087
	NRT	1035a	1255p	8	747	6		1002		MEM	1000a	1110a	972	D9S			822	

Look who lets you fly free faster.

Northwest's frequent flyer program, WorldPerksSM, awards a free round trip domestic ticket (including Alaska) after just 20,000 miles. That's twice as fast as most other major airlines. Fly 40,000 miles and you've earned a free round trip ticket to Hawaii, Mexico, the Caribbean or Europe. And 60,000 miles gets you a free round trip to Asia. As a WorldPerks member, you can also upgrade to First Class for only \$15-\$45 more than full-fare coach.

Looking for fast free travel? Look to Northwest.

ADDITIONAL CITIES SERVED BY AIRLINK

ABR	Aberdeen	LNK	Lincoln
ABQ	Albuquerque	LGB	Long Beach
ESF	Alexandria	MWA	Marion
APN	Alpena	MQT	Marquette
BTL	Battle Creek	MCW	Mason City
BLI	Bellingham	MFR	Medford
BJI	Bemidji	MEI	Meridian
BRD	Brainerd	MLS	Miles City
BKX	Brookings	MHE	Mitchell
BUR	Burbank	MLU	Monroe
BTM	Butte	MRY	Monterey
CGI	Cape Girardeau	MSL	Muscle Shoals
COU	Columbia, MO	MKG	Muskegon
GTR	Columbus, MS	OAK	Oakland
CCR	Concord	ONT	Ontario
DVL	Devils Lake	OSH	Oshkosh
EKI	Elkhart	OWB	Owensboro
EUG	Eugene	PAH	Paducah
EVV	Evansville	PSC	Pasco
FYV	Fayetteville	PLN	Pellston
FNT	Flint	PIR	Pierre
FOD	Fort Dodge	RDM	Redmond
FSM	Fort Smith	RHI	Rhineland
FAT	Fresno	RFD	Rockford
GGW	Glasgow, MT	CIU	Sault Ste. Marie
GDV	Glendive	SJC	San Jose
GPZ	Grand Rapids, MN	SDY	Sidney
GLH	Greenville	SUX	Sioux City
CMX	Hancock	SGF	Springfield, MO
HVR	Havre	SKK	Stockton
HIB	Hibbing	TXK	Texarkana
HON	Huron	TVF	Thief River Falls
INL	International Falls	TOL	Toledo
IWD	Ironwood	TVC	Traverse City
JXN	Jackson, MI	TUP	Tupelo
JAN	Jackson, MS	ALO	Waterloo
MKL	Jackson, TN	ATY	Watertown
JMS	Jamestown, ND	ISN	Williston
JLN	Joplin	OLF	Wolf Point
LAN	Lansing	YKM	Yakima
PIB	Laurel/Hattiesburg	YNG	Youngstown
LWT	Lewistown		

Equipment designated AIR indicates Airlink Service

Airlink Flights

1700-1999
2300-2699
2700-2899
3200-3299
3800-3899

Operated By

PSA
Express Airlines I
Simmons
Mesaba
Big Sky

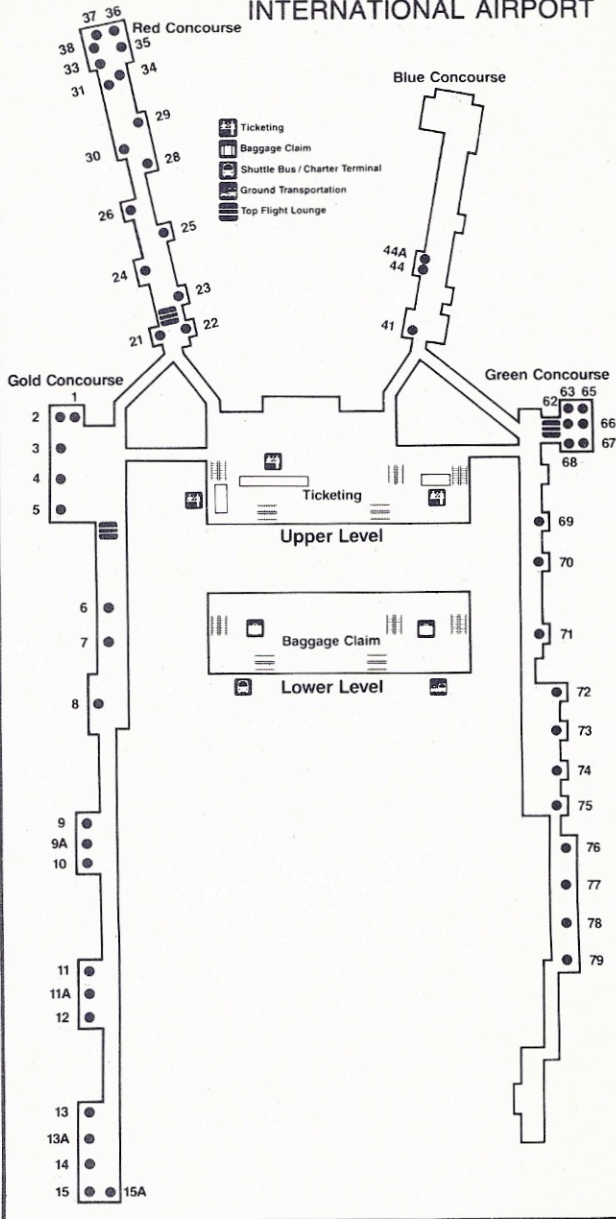
ST = Stops	X = Except	4 = Thursday
a = AM	1 = Monday	5 = Friday
p = PM	2 = Tuesday	6 = Saturday
	3 = Wednesday	7 = Sunday

Northwest Toll-Free Number: 1-800-225-2525

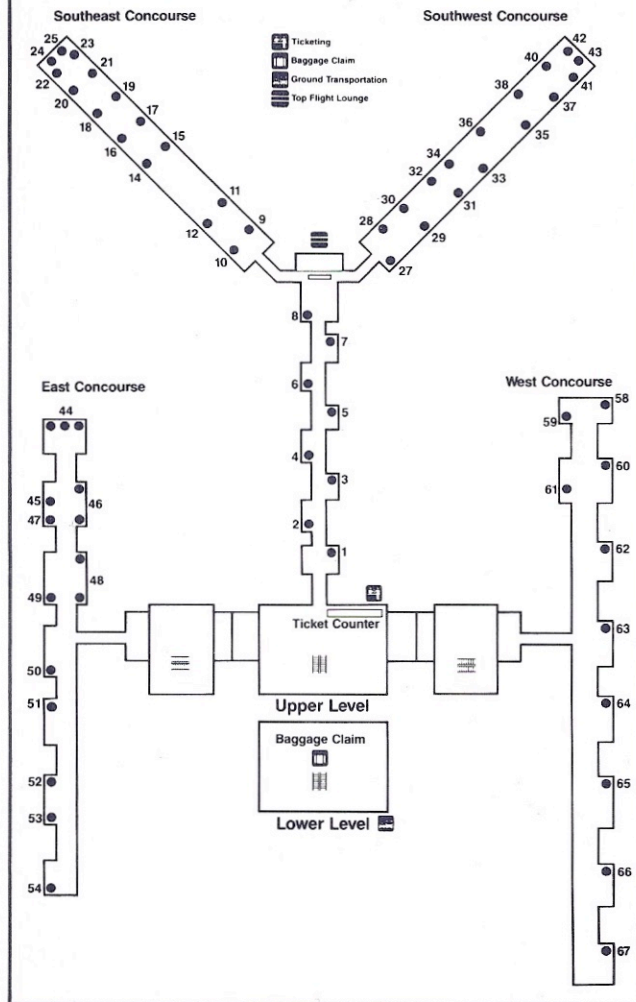
Schedule Subject to Change

WORLDPERKSSM

MINNEAPOLIS/ST. PAUL INTERNATIONAL AIRPORT



MEMPHIS INTERNATIONAL AIRPORT



HOW TO USE THIS TIMETABLE

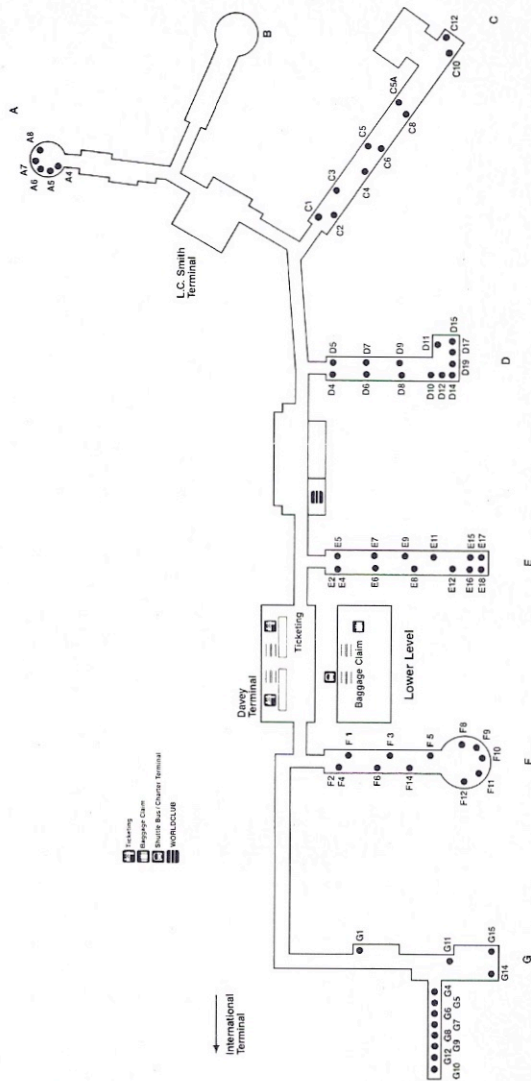
This timetable is arranged alphabetically by airport code, not by city name; on page 2 you will find the cities we serve and their airport codes. This schedule lists all nonstop Northwest and NW Airlink flights as well as selected one- and two-stop flights.

If you can't find a direct flight from your origin to your destination, it's easy to build a connection via one of our three hubs, DTW, MEM and MSP, or via our international gateways of BOS, JFK, ORD, SEA, SFO, and LAX. Follow these steps to build a connection.

- Choose a flight from origin to hub or gateway
- Note arrival time at hub or gateway
- Allow enough time to make your flight by adding the minimum connecting time to your arrival time in hub or gateway
- Find the best flight to your destination
- You may want to check another hub or gateway for a faster trip (you can get from Washington DC to Seattle via DTW, MEM or MSP)

WORLDPERKS SM

DETROIT METROPOLITAN AIRPORT



Look who gives you more of the world from more of the USA.

Northwest flies to over 200 cities spread across three continents and 19 countries.

And we do it so well that we expect travelers to choose us 33 million times this year.

No matter where you are, if you want to be somewhere else, you're looking at the best way to get there.

MINIMUM CONNECTING TIMES

NW Domestic to NW Domestic :30

NW Domestic to NW International

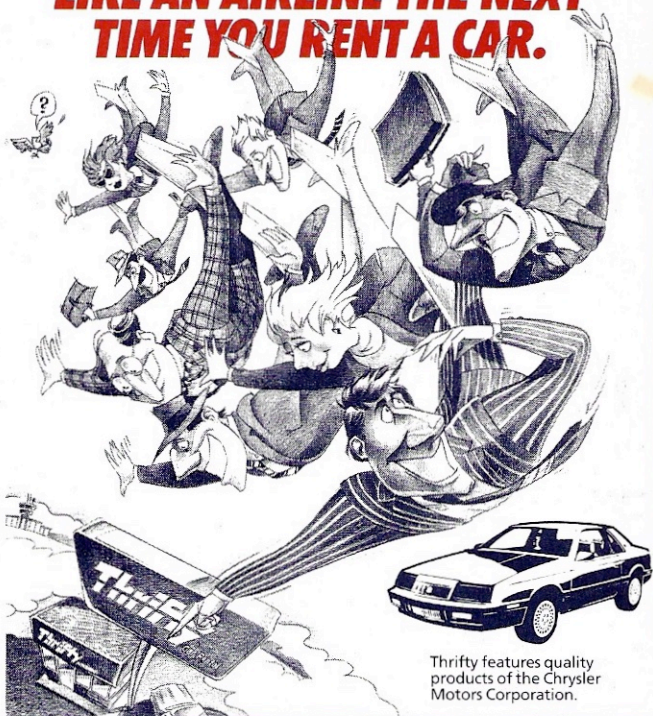
BOS	:40
DTW	:30
JFK	:40
LAX	:30
MEM	:30
MSP	:40
ORD	:30
SEA	:30
SFO	:40

NW International to NW Domestic

BOS	1:00
DTW	1:30
JFK	1:45
LAX	1:30
MEM	1:15
MSP	1:30
ORD	1:30
SEA	1:00
SFO	1:30

Look to us.

WHY YOU SHOULD THINK LIKE AN AIRLINE THE NEXT TIME YOU RENT A CAR.



Thrifty features quality products of the Chrysler Motors Corporation.

More and more airlines, like Northwest, are choosing Thrifty Car Rental as a frequent flyer partner. You should too.



Northwest has made Thrifty a partner in its frequent flyer program. They chose Thrifty because of our popular low rates, excellent service and convenient locations at all major airports.

Obviously, Northwest is looking for the same things in a rental car company that you are. And they're finding them at Thrifty. Plus, with Thrifty, you can earn valuable WORLDPERKS miles with every rental.

So the next time you rent a car, think like an airline and choose Thrifty. See your travel consultant, or call

1-800-FOR-CARS (1-800-367-2277).

Thrifty
Thrifty
Car Rental