

EFFECTIVE AUGUST 1, 1966

BONANZA

AIR LINES



BONANZA . . . Leaders in the **Low Fare** Game

We don't like to blow our own horn too much but, after all, we were first with many special low fares which are today being used in some form by many other airlines.



\$ Take our Youth Fare for example. Introduced by Bonanza in 1961, this fare has since been copied, with variations, by almost all domestic airlines. Bonanza's Youth Fare enables anyone between the ages of 12 and 22 with a youth identification card (purchased on a yearly basis for just \$2.00) to make firm, positive reservations and fly on Bonanza's system at a savings of approximately 40%. The "No Standby" feature has made Bonanza's Youth Fare very popular.

\$ The Clergy Fare, offered first by Bonanza in 1957, allows all members of the clergy to fly Bonanza's system for Half Fare. This fare is on a space available basis at point of origination. A clergy identification card (purchased yearly for \$5.00) is required.

\$ Bonanza's Round Trip Discount fares save passengers up to 26% from regular fares. This program, started by Bonanza in 1961 between many of its cities, was quickly adopted system-wide, and is now available between most pairs of points on Bonanza's system and can be used any day. Passengers using this Round Trip Discount must return within 7 days.

\$ Realizing that Group Fares were attractive to many new customers, Bonanza offered a Group Fare Plan in 1962. You save 30% to 38% from regular first class fares on flights between most cities on Bonanza's system. Any group qualifies — even groups as small as 5 people! And, if you are the organizer of a group of 15 or more and purchase the tickets for them, you go FREE. This fare is on round trip and tickets must be purchased at least 48 hours before departure.

\$ Probably Bonanza's single greatest contribution to promotion of tourism and air travel was the "BonanzaLand Area Fare". This plan, introduced by Bonanza in 1961, was the forerunner of the "Visit U.S.A." fare now offered by U. S. airlines to foreign visitors. The BonanzaLand fare provides persons from outside Bonanza's territory a 15- or 30-day "pass" to unlimited air travel anywhere on Bonanza's system for a flat \$90.00 or \$160.00 ticket. This innovation in air fares won Bonanza the Presidential "E" award for promoting tourism in the U. S.

\$ Bonanza also provides a system-wide Family Plan Fare. It is good between all pairs of cities on Bonanza's system and works like this . . . one parent pays full fare, all other immediate family members fly for half fare (one child under 2 flies free). Of course, the Family Plan allows firm, positive reservations; however, travel is restricted to certain days of the week.

\$ Budget-Aire and Jet-Commuter fares to Las Vegas from Los Angeles — a flat \$13.00 plus tax, one way — good on all flights. This special fare represents up to 40% savings from existing first class and coach fares in the market. Bonanza was first in lowering the fare to Las Vegas in an effort to promote tourism and air travel in the Southwest.

\$ And, on Bonanza, it costs you no more to ride one of our new DC-9 Funjets than it does to fly on the popular F-27 jet-props. Why? Because we're one airline who feels you shouldn't have to pay more to get the very best in air travel.



RENO - LAS VEGAS - LOS ANGELES

Table with columns for flight numbers (401, 447, 451, 405, 601, 311, 441, 131, 407, 411, 433, 443, 417, 603, 315, 445, 419, 453, 137, 135), services (K, C, A, Y), frequencies (DC-9, F-27), and flight details including departure/arrival times and aircraft types.

SALT LAKE CITY - RENO - LAS VEGAS - PHOENIX

Table with columns for flight numbers (111, 101, 501, 131, 103, 511, 433, 105, 107, 115, 137, 135, 515, 503), services (A, Y), frequencies (F-27, DC-9), and flight details including departure/arrival times and aircraft types.

PHOENIX - SAN DIEGO - LOS ANGELES

Table with columns for flight numbers (447, 451, 311, 221, 441, 223, 225, 443, 247, 315, 445, 227, 453, 229), services (C, A), frequencies (F-27), and flight details including departure/arrival times and aircraft types.

LEGEND
MST - Mountain Standard Time
PDT - Pacific Daylight Saving Time
AM - Light Face
PM - Bold Face

All flights operate daily except as otherwise indicated.

REFERENCE MARKS

A - Propeller First Class
F-27A - Fairchild F-27A Jet-Prop. Equipment
K - Jet Commuter
- Y Service Las Vegas-Reno
C - Budget Aire
DC-9 - Douglas DC-9 Jet-Prop. Equipment
* - Service Temporarily Suspended



LOS ANGELES — LAS VEGAS — RENO

432	432	440	312	404	602	134	450	408	410	442	FLIGHT NUMBER		414	138	136	452	416	604	314	444	418	446	
K	K	C	A	K	A	Y	C	K	K	C		SERVICE	K	A	Y	C	K	A	A	C	K	C	
Ex. Su.	Su. Only											EQUIPMENT		Sa. Only	Ex. Sa.								
DC-9	DC-9	F-27	F-27	DC-9	F-27	DC-9	F-27	DC-9	DC-9	F-27		EQUIPMENT	DC-9	F-27	DC-9	F-27	DC-9	F-27	F-27	F-27	DC-9	F-27	
6 35	6 35	7 15	9 35	9 15	10 00		11 45	12 00	2 45	3 00	Lv LOS ANGELES (In'l) (PDT)	Lv	4 30			5 00	5 30		7 00	8 00	8 30	10 00	
JET	JET	JET	JET	JET			JET	JET	JET	JET	Ar	JET					JET		JET	JET	JET	JET	
7 21	7 21	8 47	9 59	10 01	11 05		12 09	12 17	3 31	3 24	Ar SANTA ANA-LAGUNA BEACH	Ar	5 16	FROM PHOENIX	FROM PHOENIX	5 24	5 32	6 16	7 24	7 29	8 24	8 32	
#	#	#	#	#	#	#	#	#	#	#	Ar	#	#	#	#	#	#	#	#	#	#	#	
7 45	7 45						11 17	12 46	3 31	4 32	Ar					6 32	6 16	7 05	7 24	7 29	9 32	9 16	
8 45	8 45										Lv LAS VEGAS	Lv		5 35	6 40								
											Ar	Ar		7 13	7 40								

PHOENIX — LAS VEGAS — RENO — SALT LAKE CITY

100	502	432		510	112	134	104	FLIGHT NUMBER		514	116	138	136		108		504	118
Y	Y	Y		A	A	Y	Y		SERVICE	A	A	A	Y		A		Y	A
Ex. Su.	Ex. Su.	Ex. Su.							EQUIPMENT			Sa. Only	Ex. Sa.					
DC-9	DC-9	DC-9		F-27	F-27	DC-9	DC-9		EQUIPMENT	F-27	F-27	F-27	DC-9		F-27		DC-9	F-27
6 30	7 00			7 25	9 15	11 00	1 30	Lv	PHOENIX (MST)	Lv	3 00	4 55	4 00	5 30		6 30	7 15	9 30
JET	JET			JET	JET	JET	JET	Ar	PRESCOTT	Ar	JET	JET	JET	JET	Ar	7 02		JET
7 20	8 16			8 00	9 47	10 21	2 20	Ar	KINGMAN	Ar	5 50	6 00	5 14	6 20	Ar	7 05		JET
				8 30	10 25	11 50	12 10	Ar	GRAND CANYON (MST)	Ar	6 48			6 40	Ar	7 35		JET
				8 40	10 55	11 10	1 10	Ar	LAS VEGAS (PDT)	Ar				7 45	Ar	8 33		JET
								Ar	LAS VEGAS	Lv	5 35	6 40						JET
								Ar	RENO (PDT)	Ar	7 13	7 40						JET
								Ar	PAGE (Lake Powell) (MST)	Ar								JET
				9 05				Ar	CEDAR CITY	Lv	4 35							JET
				9 08				Ar	SALT LAKE CITY (MST)	Ar	4 50							JET
				9 46				Ar			5 52							JET
				10 01				Ar										JET
				11 03				Ar										JET
																		JET

LOS ANGELES — SAN DIEGO — PHOENIX

222	440	220	312	450	224	442	FLIGHT NUMBER		226	246	452	314	228	444	446
A	C	A	A	C	A	C		SERVICE	A	A	C	A	A	C	C
								EQUIPMENT							
F-27	F-27	F-27	F-27	F-27	F-27	F-27		EQUIPMENT	F-27	F-27	F-27	F-27	F-27	F-27	F-27
7 00	7 15	7 30	9 35	11 45	12 30	3 00	Lv	LOS ANGELES (In'l) (PDT)	Lv	3 30	4 40	5 00	7 00	7 50	8 00
JET	JET	JET	JET	JET	JET	JET	Ar	SANTA ANA-LAGUNA BEACH	Ar	JET	JET	JET	JET	JET	JET
7 20	7 39	7 50	10 04	10 29	12 09	3 24	Ar	SAN DIEGO	Ar	3 50			7 29	8 10	8 24
7 25	7 47	7 55	10 04	10 39	12 17	3 32	Ar	ONTARIO	Ar	3 55			7 52	8 15	8 32
	TO LAS VEGAS	8 22		11 12	12 09	1 22	Ar	RIVERSIDE	Ar				8 02	8 42	8 47
	TO LAS VEGAS	8 27		11 15	12 17	1 27	Ar	PALM SPRINGS-INDIO	Ar				8 35	9 24	10 24
	TO LAS VEGAS			11 15	12 17	1 27	Ar	BLYTHE	Ar				8 38	9 34	10 32
	TO LAS VEGAS			11 15	12 17	1 27	Ar	EL CENTRO (PDT)	Ar	4 40	5 33		9 22	9 56	
	TO LAS VEGAS			11 15	12 17	1 27	Ar	YUMA (MST)	Ar	4 52	5 45		9 34	10 01	
	TO LAS VEGAS			11 15	12 17	1 27	Ar	PHOENIX (MST)	Ar	5 57	7 02		10 51		

LEGEND

- MST — Mountain Standard Time
- PDT — Pacific Daylight Saving Time
- AM — Light Face
- FM — Bold Face

All flights operate daily except as otherwise indicated.

REFERENCE MARKS

- A — Propeller First Class
- C — Budget Air
- Y — Jet Coach
- F-27A — Fairchild F-27A Jet-Prop. Equipment
- K — Jet Commuter
- DC-9 — Douglas DC-9 Fan-Jet Equipment
- # — Y Service Las Vegas-Reno
- † — Service Temporarily Suspended

BONANZA AIR LINES

QUICK REFERENCE SCHEDULE



BONANZA AIR LINES						QUICK REFERENCE SCHEDULE											
Leave	Arrive	Flight Service	Equip-ment Stops	Remarks		Leave	Arrive	Flight Service	Equip-ment Stops	Remarks	Leave	Arrive	Flight Service	Equip-ment Stops	Remarks		
From PALM SPRINGS, Calif. (PDT)						From RIVERSIDE, Calif. (PDT)						From SANTA ANA, Calif (PDT)					
for reservations call 327-1471						for reservations call 684-6221						for reservations call 638-2220					
To LOS ANGELES, Calif. (PDT) \$11.60						To LAS VEGAS, Nevada (PDT) \$12.00						To EL CENTRO, Calif. (PDT) \$12.35					
\$19.50 rmd. trip exc.						12:17 1:17 450C F-27 0						7:55 9:02 220A F-27 1					
8:17 9:04 311A F-27 1						5:32 6:32 452C F-27 0						12:55 2:02 224A F-27 1					
6:17 7:09 315A F-27 1						To LOS ANGELES, Calif. (PDT) \$6.00						3:55 4:40 226A F-27 0					
To PHOENIX, Ariz. (MST) \$20.00						Budget-Aire \$6.55 First Class Prop.						8:15 9:22 228A F-27 1					
\$32.00 rmd. trip exc.						7:28 7:49 451C F-27 0						To GRAND CANYON, Ariz. (MST) \$30.50					
10:39 12:00 312A F-27 1						8:43 9:04 311A F-27 0						10:00 12:28 602A/ F-27 1 Via Las Vegas					
8:02 9:23 314A F-27 1						8:18 8:39 453C F-27 0						103A					
From PHOENIX, Ariz. (MST)						To PHOENIX, Ariz. (MST) \$26.00						To LAS VEGAS, Nevada (PDT) \$18.00					
for reservations call 273-9111						\$42.00 rmd. trip exc.						\$19.35 Via Los Angeles					
To BLYTHE, Calif. (PDT) \$14.00						To SALT LAKE CITY, Utah (MST) \$38.00						\$29.00 rmd. trip exc.					
\$22.00 rmd. trip exc.						\$56.00 rmd. trip exc.						10:00 11:05 602A F-27 0					
6:45 7:32 311A F-27 0						7:00 8:16 502Y DC-9 0 Ex. Su.						11:54 3:31 223A F-27 1 Via Los Angeles					
4:45 5:32 315A F-27 0						7:25 11:03 510A F-27 4						410K DC-9					
To CEDAR CITY, Utah (MST) \$24.00						3:00 5:52 514A F-27 1						2:53 5:16 225A/ F-27 1 Via Los Angeles					
\$38.00 rmd. trip exc.						7:15 8:31 504Y DC-9 0						414K DC-9					
7:25 9:46 510A F-27 3						To SAN DIEGO, Calif. (PDT) \$24.00						6:00 7:05 604A F-27 0					
3:00 4:35 514A F-27 0						\$38.00 rmd. trip exc.						8:40 11:32 227A/ F-27 2 Via Los Angeles					
To EL CENTRO, Calif. (PDT) \$18.00						To SANTA ANA, Calif. (PDT) \$26.00						446C					
\$29.00 rmd. trip exc.						\$42.00 rmd. trip exc.						To LOS ANGELES, Calif. (PDT) \$6.35					
7:10 8:28 221A F-27 1						7:10 9:48 221A F-27 3						9:53 10:13 221A F-27 0					
9:45 10:50 223A F-27 0						9:45 11:49 223A F-27 1						11:54 12:14 223A F-27 0					
12:10 1:28 225A F-27 1						12:10 2:48 225A F-27 3						2:53 3:13 225A F-27 0					
3:45 5:03 247A F-27 1						7:00 8:35 227A F-27 0						8:40 9:00 227A F-27 0					
7:35 8:53 229A F-27 1						7:35 10:13 229A F-27 3						10:18 10:28 229A F-27 0					
To GRAND CANYON, Ariz. (MST) \$13.00						To YUMA, Ariz. (MST) \$15.00						To PHOENIX, Ariz. (MST) \$26.00					
\$29.00 rmd. trip exc.						\$24.00 rmd. trip exc.						\$42.00 rmd. trip exc.					
7:25 8:30 510A F-27 1						7:10 8:00 221A F-27 0						7:25 8:50 222A F-27 0					
4:55 5:50 116A F-27 0						12:10 1:00 225A F-27 0						7:55 10:31 220A F-27 3					
6:30 7:35 108A F-27 1						3:45 4:35 247A F-27 0						12:55 5:57 226A F-27 1					
To KINGMAN, Ariz. (MST) \$15.00						7:35 8:25 229A F-27 0						8:15 10:51 228A F-27 3					
\$24.00 rmd. trip exc.						From PRESCOTT, Ariz. (MST)						To SAN DIEGO, Calif. (PDT) \$8.80					
9:15 10:21 112A F-27 1						for reservations call 445-2812						7:55 8:22 220A F-27 0					
9:30 10:23 118A F-27 0						To LAS VEGAS, Nevada (PDT) \$15.00						12:55 1:22 224A F-27 0					
To LAS VEGAS, Nevada (PDT) \$21.00						\$24.00 rmd trip exc.						8:15 8:42 228A F-27 0					
\$34.00 rmd. trip exc.						9:50 10:55 112A F-27 1						To YUMA, Ariz. (MST) \$18.00					
6:30 7:20 100Y DC-9 0 Ex. Su.						7:05 8:33 108A F-27 1						\$29.00 rmd. trip exc.					
9:15 10:55 112A F-27 2						To PHOENIX, Ariz. (MST) \$ 8.00						7:55 9:36 220A F-27 2					
11:00 11:50 134Y DC-9 0						\$13.00 rmd. trip exc.						12:55 2:36 224A F-27 2					
1:30 2:20 104Y DC-9 0						7:07 7:35 111A F-27 0						8:15 9:56 228A F-27 2					
4:00 5:14 138A F-27 0 Sa. Only						8:27 8:59 115A F-27 0						From YUMA, Ariz. (MST)					
4:55 6:48 116A F-27 1						9:37 10:06 515A F-27 0						for reservations call 782-1873					
5:30 6:20 136Y DC-9 0 Ex. Sa.						To SALT LAKE CITY, Utah (MST) \$34.00						To LOS ANGELES, Calif. (PDT) \$21.00					
6:30 8:33 108A F-27 2						\$54.00 rmd trip exc.						\$34.00 rmd. trip exc.					
9:30 10:57 118A F-27 1						8:00 11:03 510A F-27 3						8:05 10:13 221A F-27 3					
To LOS ANGELES, Calif. (PDT) \$28.00						From RENO, Nevada (PDT)						1:05 3:13 225A F-27 1					
\$45.00 rmd. trip exc.						for reservations call 329-0001						4:40 6:10 247A F-27 1					
6:45 9:04 311A F-27 3						To LAS VEGAS, Nevada (PDT) \$27.00						8:30 10:38 229A F-27 1					
7:10 10:13 221A F-27 4						\$43.00 rmd. trip exc.						To PHOENIX, Ariz. (MST) \$15.00					
9:45 12:14 223A F-27 2						9:25 10:25 131Y DC-9 0 Ex. Su.						\$24.00 rmd. trip exc.					
12:10 3:13 225A F-27 4						1:45 2:45 433Y DC-9 0						9:41 10:31 220A F-27 0					
3:45 6:10 247A F-27 2						7:45 9:22 137A F-27 0 Sa. Only						2:41 3:31 224A F-27 0					
4:45 7:09 315A F-27 3						8:20 9:20 135Y DC-9 0 Ex. Sa.						6:12 7:02 246A F-27 0					
7:00 9:00 227A F-27 1						To LOS ANGELES, Calif. (PDT) \$36.00						10:01 10:51 228A F-27 0					
7:35 10:38 229A F-27 4						9:25 11:21 131Y/ DC-9 1 Ex. Su. Via Las Vegas						To SAN DIEGO, Calif. (PDT) \$14.00					
To ONTARIO, Calif. (PDT) \$26.00						407K DC-9 1 K Service Las Vegas-Los Angeles						\$22.00 rmd. trip exc.					
\$42.00 rmd. trip exc.						1:45 3:51 433Y DC-9 1						8:05 9:15 221A F-27 1					
4:45 6:42 315A F-27 2						To PHOENIX, Ariz. (MST) \$46.00						1:05 2:15 225A F-27 1					
To PAGE, Ariz. (MST) \$20.00						\$74.00 rmd. trip exc.						8:30 9:40 229A F-27 1					
\$32.00 rmd. trip exc.						9:25 11:35 131Y DC-9 1 Ex. Su.						To SANTA ANA, Calif. (PDT) \$18.00					
7:25 9:05 510A F-27 2						1:45 4:20 433Y/ DC-9 1 Via Las Vegas						\$22.00 rmd. trip exc.					
To PALM SPRINGS, Calif. (PDT) \$20.00						105Y						8:05 9:48 221A F-27 2					
\$32.00 rmd. trip exc.						7:45 10:55 137A F-27 1 Sa. Only						1:05 2:48 225A F-27 2					
6:45 8:07 311A F-27 1						8:20 10:30 135Y DC-9 1 Ex. Sa.						8:30 10:13 229A F-27 2					
4:45 6:07 315A F-27 1																	

LEGEND
MST — Mountain Standard Time
PDT — Pacific Daylight Saving Time
AA — Light Aircraft
PM — Bold Face
All flights operate daily except as otherwise indicated.

REFERENCE MARKS

A — Propeller First Class
Y — Jet Coach
K — Jet Commuter
C — Budget Aire
F-27A — Fairchild F-27A Jet-Prop Equipment
DC-9 — Douglas DC-9 Fan-Jet Equipment



DC-9
JET COMMUTER
FARE

BETWEEN
LOS ANGELES and LAS VEGAS

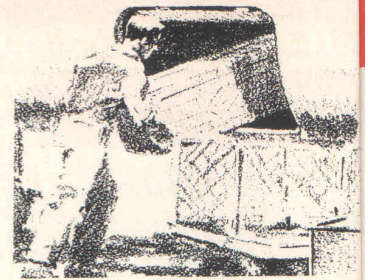
\$13 Plus Tax

One Way Budget-Aire Fares

	† APPLE VALLEY	LAS VEGAS	LOS ANGELES
LAS VEGAS	\$10.00		
LOS ANGELES	9.00	\$13.00	
ONTARIO	4.70	12.00	\$6.00
RIVERSIDE	4.70	12.00	6.00

NOW GIVE YOUR
CARGO

A BIG LIFT
on Bonanza
DC-9 FanJets



With the introduction of DC-9 fan jets in the West, Bonanza now offers a *big lift* to your cargo shipments. This big, burley jet has far more cargo capacity than any aircraft its size. Now Bonanza flies your cargo *faster*, more frequently, and at the *lowest* cargo rates! Call your agent, forwarder or Bonanza cargo specialist for the best service in the West.

ONE WAY FARES AND SPECIAL ROUND TRIP EXCURSION FARES

No Additional Charge when transportation is via flights operated with jet aircraft.

And Between	† Apple Valley	Blythe	Cedar City	El Centro	Grand Canyon	Kingman	Las Vegas	Los Angeles	Ontario	Page	Palm Springs	Phoenix	Prescott	Reno	Riverside	Salt Lake City	San Diego	Santa Ana	Yuma	
Blythe	\$17.95											\$22.00								
Cedar City		\$36.00										38.00				\$29.00				
El Centro	22.70	29.45	\$41.00									29.00								
Grand Canyon	25.00	25.00	14.00	\$30.00												50.00				
Kingman	20.00	27.00		31.00	\$15.00		\$14.00					24.00								
Las Vegas	14.00	30.00	26.00	35.00	12.50	\$ 9.00						34.00	\$24.00	\$43.00			\$46.00	\$29.00	\$53.00	
Los Angeles	9.75	17.20	44.00	16.60	30.00	28.00	21.75				\$19.50	45.00							34.00	
Ontario	5.30	14.75	44.00	19.55	28.00	24.00	17.00	\$ 6.55				42.00								
Page		32.00	13.00	36.00	9.00		20.00	40.00	\$40.00			32.00				48.00				
Palm Springs	12.30	9.00	42.00	24.50	31.00	31.00	24.00	11.60	9.10	\$37.00		32.00								
Phoenix	28.00	14.00	24.00	18.00	13.00	15.00	21.00	28.00	26.00	20.00	20.00			13.00	74.00	\$42.00	56.00	38.00	42.00	24.00
Prescott	27.00	20.00	18.00	24.00	7.00	9.00	15.00	28.00	28.00	14.00	26.00	8.00				54.00				
Reno	36.00	49.00		49.00	39.00	34.00	27.00	36.00	36.00		43.00	46.00	40.00							
Riverside	5.30	14.75	44.00	19.55	28.00	24.00	17.00	6.55		40.00	9.10	26.00	28.00	36.00						
Salt Lake City		50.00	18.00	54.00	31.00		41.00	61.00	61.00	30.00	56.00	38.00	34.00		61.00					
San Diego	16.95	25.45	44.00	9.45	33.00	32.00	29.00	9.00	13.75	40.00	18.75	24.00	28.00	44.00	13.75	60.00				22.00
Santa Ana	12.40	19.90	44.00	12.35	30.00	26.00	18.00	6.35	5.00	40.00	14.25	26.00	28.00	38.00	9.20	61.00	8.80			29.00
Yuma	28.00	27.00	36.00	7.00	25.00	27.00	33.00	21.00	25.00	32.00	30.00	15.00	20.00	54.00	25.00	51.00	14.00	18.00		

ONE WAY FARES BELOW - ROUND TRIP EXCURSION FARES ABOVE

NOTES: All Fares Subject to 5% Federal Tax.

Round Trip Excursion Fares — 7 Day Return Limit.

† Service Temporarily Suspended

CREDIT INFORMATION

You may charge your travel on Bonanza with any of these Credit Credentials —

- UNIVERSAL AIR TRAVEL PLAN
- HILTON CARTE BLANCHE
- AMERICAN EXPRESS
- VALLEY NATIONAL BANK CARD
- BANKAMERICARD
- DINERS' CLUB
- BONANZA CREDIT CARD

RESERVATION PHONE NUMBERS

TICKET OFFICE LOCATIONS • GROUND SERVICES

CITY	TELEPHONE	PHONE HOURS	TICKET OFFICE	OFFICE HOURS	AIRPORT	LIMO/ CAB RATE
†Apple Valley, Calif.						
Anaheim, Calif.	638-2220	24 hours	Airport Terminal	5:30a.m.-10:30p.m.	Orange County	\$1.25
Beverly Hills, Calif.	781-8662	24 Hours	521 W. 6th St.	*8:30a.m.-5p.m.	Los Angeles (International)	\$1.15
Blythe, Calif.	948-6171	5:30a.m.-7:30p.m.	Airport Terminal	5:30a.m.-7:30p.m.	Municipal	Meter
Boston, Mass.	267-1145	*9a.m.-5p.m.	535 Boylston St. (Chase Building)	*9a.m.-5p.m.		
Burbank, Calif.	781-8662	24 Hours	Airport Terminal (L.A. Int'l)	24 Hours	Los Angeles (International)	
Cedar City, Utah	586-6544	8:30a.m.-9:30p.m.	Airport Terminal	8:30a.m.-9:30p.m.	Municipal	
Chicago, Ill.	263-7769	*9a.m.-5p.m.	55 East Washington	*9a.m.-5p.m.		
Dallas, Tex.	RI 1-5118	*9a.m.-5p.m.	211 North Ervay	*9a.m.-5p.m.		
Disneyland, Calif.	638-2220	24 Hours	Airport Terminal	5:30a.m.-10:30p.m.	Orange County	\$1.25
El Centro, Calif.	352-4218	24 Hours	Airport Terminal	6:45a.m.-10p.m.	Imperial County	\$2.00
Glendale, Calif.	246-7465	6:45a.m.-10p.m.	Airport Terminal	24 Hours	Los Angeles (International)	
Grand Canyon, Ariz.	638-2329	6:30a.m.-10:30p.m.	Airport Terminal	6:30a.m.-10:30p.m.	Grand Canyon Natl. Park	\$1.25
Huntington Beach, Calif.	Zenith 7-0477	24 Hours	Airport Terminal	5:30a.m.-10:30p.m.	Orange County	Meter
Indio, Calif.	Zenith 7-0547	24 Hours	Airport Terminal	5a.m.-8p.m.	Palm Springs	Meter
Inglewood, Calif.	670-3951	24 Hours	Airport Terminal	24 Hours	Los Angeles (International)	Meter
Kingman, Ariz.	SK 3-3630	24 Hours	Airport Terminal	6a.m.-11p.m.	Municipal	\$4.00
Laguna Beach, Calif.	Zenith 7-0477	24 Hours	Airport Terminal	5:30a.m.-10:30p.m.	Orange County	Meter
Las Vegas, Nevada	736-2955	24 Hours	Sahara Hotel	9a.m.-6p.m.	McCarran	\$1.25
Los Angeles, Calif.	776-4300	24 Hours	Airport Terminal	24 Hours	Los Angeles (International)	\$1.15
	670-3951	24 Hours	521 West 6th St.	*8:30a.m.-5p.m.		
	646-3056(F)	5:30a.m.-10p.m.	Airport Terminal	24 Hours		
New York City, N.Y.	PL 2-5663	*9a.m.-5p.m.	5700 Avion Drive	5:30a.m.-10p.m.		
Ogden, Utah	Zenith 961	7a.m.-10p.m.	501 Madison Ave.	*9a.m.-5p.m.		
Ontario, Calif.	986-6724	5:30a.m.-10:00p.m.	Airport Terminal	7a.m.-10p.m.	Salt Lake City (International)	\$4.50
	339-2955		Airport Terminal	6:30a.m.-8:30p.m.	Ontario (International)	\$1.00
	984-3381(F)					
Page, Ariz.	645-2404	6:30a.m.-10p.m.	Airport Terminal	6:30a.m.-10p.m.	Lake Powell	
Palm Springs, Calif.	327-1471	5a.m.-8p.m.	Airport Terminal	5a.m.-8p.m.	Palm Springs	Meter
Pasadena, Calif.	246-7465	24 Hours	Airport Terminal	24 Hours	Los Angeles (International)	
Phoenix, Ariz.	273-9111	24 Hours	Adams Hotel	*8:30a.m.-5:30p.m.	Sky Harbor	\$1.25
	273-9201(F)	6a.m.-11:30p.m.		6a.m.-11:30p.m.		
Prescott, Ariz.	445-2812	7a.m.-11p.m.	Airport Terminal	7a.m.-11p.m.	Municipal	Meter
Reno, Nevada	329-0001	7a.m.-9:30p.m.	120 Mill St.	*8:30a.m.-5:30p.m.	Municipal	\$.75
Riverside, Calif.	684-6221	*9a.m.-10:00p.m.	Airport Terminal	5:30a.m.-10p.m.	Municipal	\$1.50
	688-6220(F)					
Salt Lake City, Utah	328-8656	7a.m.-10p.m.	Hotel Utah	*8:30a.m.-5:30p.m.	Salt Lake City (International)	\$1.25
San Diego, Calif.	296-6144	24 Hours	Airport Terminal	6:30a.m.-10p.m.	San Diego (International)	\$1.50
	296-0333(F)					
San Francisco, Calif.	YU 6-2858	*9a.m.-5p.m.	291 Geary St.	*9a.m.-5p.m.		
Santa Ana, Calif.	638-2220	24 Hours	Airport Terminal	5:30a.m.-10:30p.m.	Orange County	\$.50
	545-5815(F)					
Santa Monica, Calif.	781-8662	24 Hours	Airport Terminal	24 Hours	Los Angeles (International)	
Tokyo, Japan	501-5843	*9a.m.-5p.m.	Room 150, Imperial Hotel	*9a.m.-5p.m.		
Tucson, Ariz.	624-7427	24 Hours				
Yuma, Ariz.	782-1871	7a.m.-12p.m.	Airport Terminal	7a.m.-12p.m.	Yuma International	\$2.70

† Service Temporarily Suspended

(F)-Air Cargo Service

*Except Sat. & Sun.

*Except Sat. & Sun.

GENERAL PASSENGER INFORMATION

RESERVATIONS — Reservations must be made in advance and are tentative until tickets are purchased. Bonanza reserves the right to cancel the reservation of any passenger who fails to present himself at the Bonanza Airport Ticket Office at least 10 minutes prior to scheduled departure of flight on which his reservation was made.

TICKETS — Tickets for transportation at normal all-year fares are valid for a period of 12 months after date of issuance. Stopovers are permitted at intermediate points. At most cities a ticket pickup time will be established at the time reservations are made, and the tickets must be picked up by this time in order to retain the reservation.

CHECK-IN FOR FLIGHTS — It is requested that passengers check-in at airport ticket counters AT LEAST 20 minutes before scheduled departure time. Passengers checking-in less than 10 minutes before scheduled departure may be refused passage if boarding them will delay the flight.

CHILDREN — One child under two, not occupying a seat, will be carried free with each accompanying passenger 12 years of age or older. Children two years of age and under 12 will be charged one-half the applicable one-way adult fare, or \$4.70, whichever is greater.

BAGGAGE — Free Allowance — When fare is \$40 or less:
One or more pieces the total outside dimensions of which do not exceed 62 cumulative inches and carry-on luggage the total outside dimensions of which do not exceed 40 inches.

When fare is more than \$40:
In addition to above, one additional piece the total outside dimensions of which do not exceed 55 inches.

Baggage in excess of free allowance will be charged for at published tariff rates.

Liability — Unless extra value is declared and charges paid before departure, liability is limited as follows:

Domestic or within U.S.: \$250 or the actual value thereof, whichever is less.

International: \$7.48 per pound or the actual value thereof, whichever is less.

SCHEDULES — Schedules show the time at which flights may be expected to arrive or depart, but Bonanza will not be responsible for consequences arising from delays or from errors in the printed schedule. Times shown are subject to change without notice.

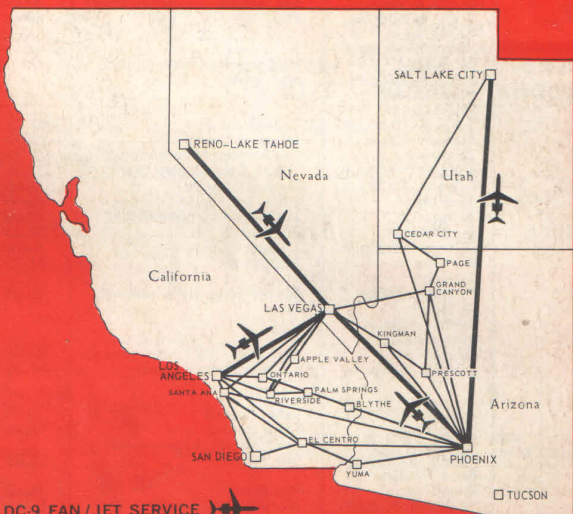
YOUTH FARES — Youth Identification Cards (valid for one year at \$2.00 per card) permit persons 12 through 21 years of age to purchase tickets at approximately 40% off adult fare between most cities. Consult your Bonanza representative for details.

FAMILY PLAN — Accompanying family members may travel at 50% of adult first class or jet coach fare except on Friday and from Noon through Midnight on Sunday.

CLERGY FARES — Reduced fares are available to members of the Clergy upon presentation of a Bonanza Air Lines Clergy Identification Card. For further details contact your Bonanza representative.

IN FLIGHT SERVICE — Cocktails available for sale on most flights.

BONANZA AIR LINES
SYSTEM ROUTE MAP



EFFECTIVE AUGUST 1, 1966

BONANZA
AIR LINES

NOW! MORE FUNJET FLIGHTS
NEW ADDED DC-9 JET SERVICE TO
LOS ANGELES • LAS VEGAS • RENO • PHOENIX • SALT LAKE CITY



RETURN REQUESTED

Bulk Rate
U. S. POSTAGE
PAID
PERMIT NO. 490
PHOENIX, ARIZONA