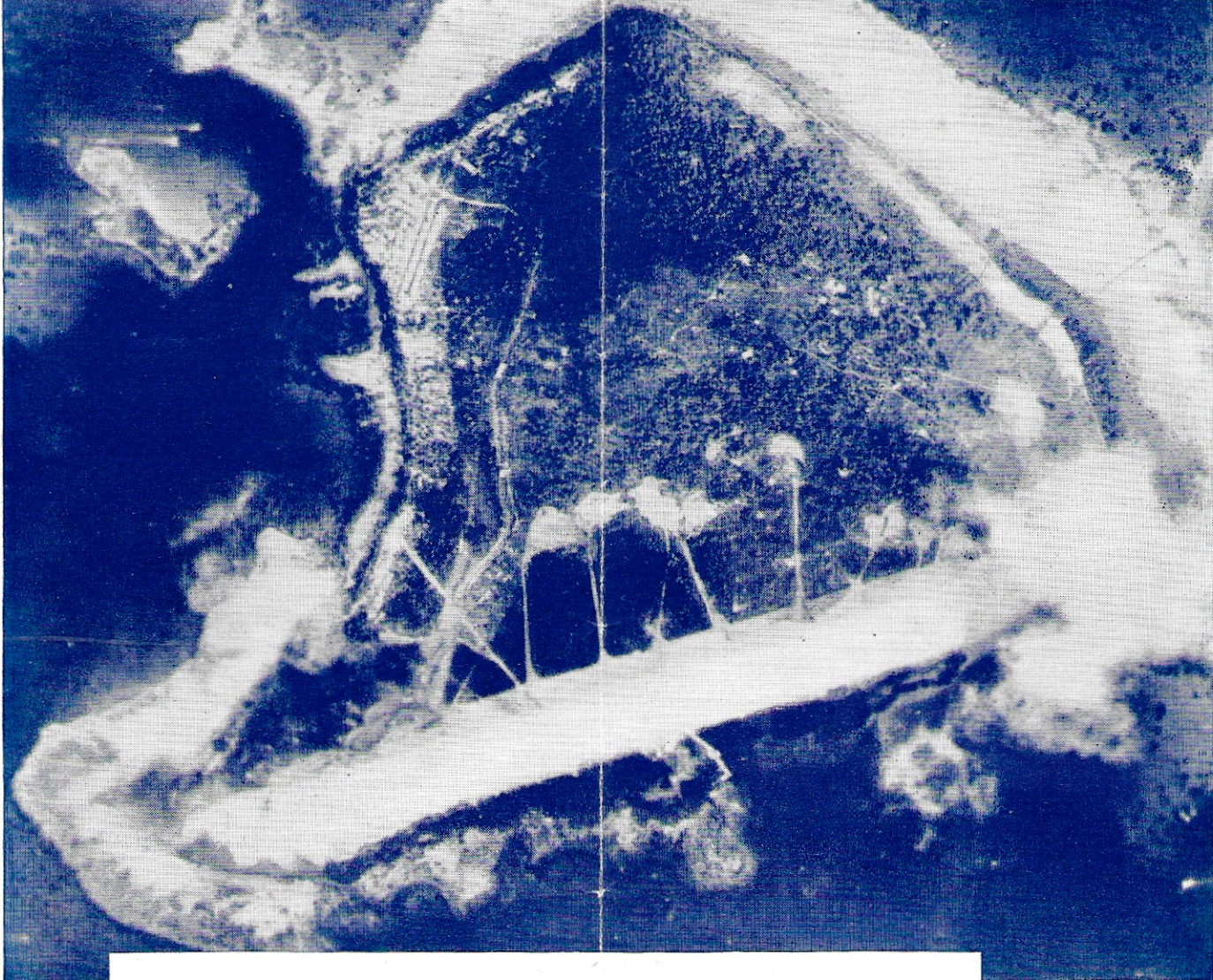


*Buy  
More  
War  
Bonds*

**CHICAGO • MILWAUKEE • MADISON • ROCHESTER  
ST. PAUL • MINNEAPOLIS • DULUTH • FARGO • WINNIPEG  
BISMARCK • MILES CITY • BILLINGS • HELENA • MISSOULA  
BUTTE • SPOKANE. PORTLAND • SEATTLE**  
**SHORTEST... FASTEST**





## The first shot at Truk was aimed in St. Paul

This is a landing field at Truk—one of many pictures snapped over the Jap stronghold by two reconnoitering Liberators manned by daring U. S. Marines.

To take this kind of picture, you don't lean out a window and snap a brownie. Each plane had a battery of six big cameras, so mounted that their lenses "saw" all details from horizon to horizon—185 miles wide at 30,000 feet. As the two swept over their objective, shutters clicked and fresh film flowed into position automatically. The prints helped guide the subsequent brilliant action described as "part repayment for Pearl Harbor."

To equip a bomber for photographic reconnaissance is beyond the scope of the plane builder's regular production line. Thus, many a Liberator—including the two that spied on Truk—has come to Northwest Airlines' Bomber Modification Center at St. Paul to be tailored for this special duty.

If you think it strange that a commercial airline was given this ticklish task, you need only recall that since 1926 Northwest Airlines has been developing expert know-how

with planes and flight. Installing cameras is but one small part of a vast activity in gigantic hangars at St. Paul—refitting and rebuilding Liberator bombers for special jobs all over the globe.

What we're learning in this war work is already useful as we pursue our day-to-day business of flying passengers, mail and cargo. Post-war, the experience piling up will make Northwest Airlines' contribution to the Air Age an important one.

# NORTHWEST AIRLINES



Passengers are required to check in at the ticket counter ten minutes before flight departure

## CHICAGO-TWIN CITIES-SPOKANE-PORTLAND-SEATTLE-VANCOUVER

### WESTBOUND

### EASTBOUND

May 1, 1944									May 1, 1944							
Mls.	Flight 1	Flight 7	Flight 3	Flight 11	Flight 9	Flight 15	Flight 5		Flight 2	Flight 16	Flight 4	Flight 6	Flight 10	Flight 12	Flight 8	
Lv Chicago..... (CWT)	0	AM	AM	AM	AM	PM	PM	PM	Lv Portland (Via UAL)...	6 16	AM	AM	PM	PM	PM	PM
Lv Milwaukee.....	83	\$2 15	\$5 00	\$8 00	\$9 30	\$2 00	\$9 15	\$10 30	Lv Vancouver... (PWT)				5 15			
Lv Madison.....		6 30	7 50		11 35	4 05			Lv Seattle..... (PWT)	\$8 30		\$4 05	\$8 45			
Lv Rochester, Minn. St. Paul.....	295								Ar Spokane.....	10 05		5 40	10 20			
Lv Minneapolis (Twin Cities Airport).....	t391	4 35	8 25	10 20	12 10	4 40	12 05	12 50	Lv Spokane..... (PWT)	*10 15		*5 50	*10 30			
Ar Fargo.....	616	6 20	10 10	12 05				2 35	Lv Missoula..... (MWT)			8 00				
Lv Fargo.....	616	*6 30		*12 15				2 45	Lv Butte.....	1 05						
Lv Bismarck..... (CWT)	801	7 55		1 40				4 10	Lv Helena.....			1 20				
Lv Miles City..... (MWT)	1051	8 45							Ar pGreat Falls.....			9 05				
Ar Billings.....	1187	9 40		3 10				5 40	Lv Billings.....	2 15		10 30	2 35			
Lv Billings.....	1187	9 55		3 25				*5 55	Lv Billings.....	2 30		\$10 45	2 50			
Lv pGreat Falls.....				\$4 55					Lv Miles City..... (MWT)	3 35						
Lv Helena.....	1392							7 25	Lv Bismarck..... (CWT)	*6 10		2 05	6 10			
Lv Butte.....	1388	*11 25							Ar Fargo.....	7 20		7 20				
Lv Missoula..... (MWT)	1498			6 10					Lv Fargo.....	7 30		*7 30				*5 45
Ar Spokane..... (PWT)	1667	12 10		6 15			8 10		Ar (Minneapolis.....	8 55		4 20	8 55		7 10	
Lv Spokane.....	1667	*12 20		*6 25			\$8 20		Lv St. Paul.....	\$9 10	\$12 40	\$4 35	\$9 10	\$1 30	*5 10	\$7 25
Ar Seattle..... (PWT)	1916	2 00		8 05			10 00		Lv (Twin Cities Airport).....							
Ar Vancouver... (PWT)		q4 44							Lv Rochester, Minn. ....			5 15		5 50		
Ar Portland (Via UAL)		q3 13	AM	q9 43	PM	PM	AM	q11 43	Lv Madison.....		2 40			7 00		
		PM	AM	PM	PM	AM	AM		Lv Milwaukee.....		3 20	7 00	11 15	3 35	8 25	9 30
									Ar Chicago..... (CWT)	11 15	AM	AM	AM	PM	PM	PM

## CHICAGO-MILWAUKEE-MINNEAPOLIS-ST. PAUL

### CHICAGO-TWIN CITIES

### TWIN CITIES-DULUTH-SUPERIOR

May 1, 1944							
	Flight 1	Flight 7	Flight 3	Flight 11	Flight 9	Flight 15	Flight 5
Lv Chicago..... (CWT)	\$2 15	\$5 00	\$8 00	\$9 30	\$2 00	\$9 15	\$10 30
Ar Milwaukee.....		5 40				9 55	
Ar Madison.....		6 25					
Ar Rochester, Minn. St. Paul.....		7 45		11 30	4 00		
Ar Minneapolis (Twin Cities Airport).....	4 35	8 25	10 20	12 10	4 40	12 05	12 50
	AM	AM	AM	PM	PM	AM	AM

Flight 41	May 1, 1944		Flight 42
Stinson			Stinson
AM	—MAIL AND EXPRESS ONLY—		PM
9 30	Lv {Minneapolis-St. Paul (Twin Cities Airport).....}	(CWT) Ar	5 25
10 50	Ar Duluth-Superior.....	Lv	4 05
AM			PM

### TWIN CITIES-CHICAGO

### PORTLAND - WENATCHEE - YAKIMA-SPOKANE

May 1, 1944							
	Flight 16	Flight 4	Flight 6	Flight 10	Flight 12	Flight 8	Flight 2
Lv Minneapolis.....	AM	AM	AM	PM	PM	PM	PM
Lv St. Paul (Twin Cities Airport).....	\$12 40	*4 35	\$9 10	\$1 30	*5 10	\$7 25	\$9 10
Lv Rochester, Minn. ....		5 15			5 50		
Lv Madison.....					7 00		
Lv Milwaukee.....	2 40				7 45		
Ar Chicago..... (CWT)	3 20	7 00	11 15	3 35	8 25	9 30	11 15
	AM	AM	AM	PM	PM	PM	PM

Service Temporarily Suspended

### CHICAGO-TWIN CITIES-FARGO-WINNIPEG

### SEATTLE-SPOKANE

Flight 7	May 1, 1944		Flight 8
AM			PM
\$5 00	Lv CHICAGO.....	(CWT) Ar	9 30
5 50	Lv MILWAUKEE.....	Lv	
6 30	Lv MADISON.....	Lv	
7 50	Lv ROCHESTER, Minn. St. Paul.....	Lv	
	Lv MINNEAPOLIS (Twin Cities Airport).....	Ar	\$7 25
8 25	Ar FARGO.....	Lv	*5 45
\$8 40	Lv FARGO.....	Ar	5 35
10 10	Ar GRAND FORKS.....	Lv	5 00
10 20	Lv GRAND FORKS.....	Ar	4 45
10 55	Ar WINNIPEG.....	(CWT) Lv	3 50
11 15			PM
12 15			

Flight 1	Flight 3	Flight 5	May 1, 1944		Flight 2	Flight 4	Flight 6
PM	PM	AM			AM	PM	PM
\$12 20	*6 25	\$8 20	Lv Spokane... (PWT) Ar	10 05	5 40	10 20	
2 00	8 05	10 00	Ar Seattle... (PWT) Lv	\$8 30	\$4 05	\$8 45	
PM	AM	AM		AM	PM	PM	

\*—Complimentary meal served aloft after departure from station indicated.

AM—LIGHT FACE TYPE  
PM—BOLD FACE TYPE

\$—Complimentary light refreshments served.

q—Via UAL, Seattle-Portland-Vancouver.

t—Chicago-Minneapolis-St. Paul Non-Stop. 350 miles.

p—Local non-priority passengers will not be carried between Great Falls and Billings, Butte or Helena.

MEALS—Complimentary meals served all passengers enroute during meal time.

EQUIPMENT—Douglas 21-passenger Luxury liners operated on all flights except between Minneapolis-St. Paul and Duluth-Superior

### ALL FLIGHTS DAILY

PRIORITIES—You don't need a priority to fly but a priority does make your reservation more certain. Is your trip "essential to expedite war production, construction or other activities connected with the war program?" We'll help you find out.

# CONNECTING SERVICES

## CHICAGO-TWIN CITIES-FARGO-BILLINGS SALT LAKE CITY-LOS ANGELES

PM 10 30	Lv CHICAGO	(CWT) Ar	PM 11 15
10 05	Lv MILWAUKEE	Ar	
	MINNEAPOLIS		
1 05	Lv ST. PAUL	Ar	8 55
	(Twin Cities Airport)		
2 45	Lv FARGO	(CWT) Ar	7 20
5 55	Lv BILLINGS	(MWT) Lv	2 30
7 15	Ar HELENA	BUTTE Lv	1 05
4 00	Lv HELENA	BUTTE (WAL) Ar	9 30
7 15	Ar SALT LAKE CITY	(MWT) Lv	7 00
10 50	Ar LOS ANGELES	(PWT) Lv	12 45
PM			PM

## SEATTLE-BILLINGS-FARGO-TWIN CITIES-CHICAGO ST. LOUIS-MEMPHIS-NEW ORLEANS-DALLAS-HOUSTON

PM 4 05	PM 8 45	Lv SEATTLE	(PWT) Ar	PM 2 00	AM	AM	
1 52	5 31	Lv PORTLAND (UAL)	Ar	3 12			
5 50	10 30	Lv SPOKANE (NWA)	(PWT) Ar	12 10			
10 45	2 40	Lv BILLINGS	(MWT) Ar	9 40			
	7 30	Lv FARGO	(CWT) Ar	6 20	10 10		
		MINNEAPOLIS					
4 35	9 10	Lv ST. PAUL	(CWT) Ar	4 35	8 25	12 05	
		(Twin Cities Airport)					
5 15		Lv ROCHESTER	Ar		7 45		
7 00	11 15	Ar CHICAGO	Lv	2 15	5 00	9 15	
AM AA-31	AM CHI-7	PM CHI-1		AM CHI-8	AM CHI-4	PM CHI-2	
8 20	8 10	12 30	Lv CHICAGO	(CWT) Ar	12 55	2 30	3 40
10 05	9 55	2 15	Ar ST. LOUIS	Lv	11 10	12 45	1 55
	11 55	4 15	Ar MEMPHIS	Lv	9 10	10 45	11 55
		7 05	Ar NEW ORLEANS	(CWT) Lv		7 45	9 00
3 42	5 31		Ar DALLAS	Lv			
	4 05		Ar HOUSTON	Lv	5 00		
PM	PM	PM		PM	PM	AM	

## VANCOUVER-SEATTLE-WINNIPEG-TWIN CITIES CHICAGO-TORONTO-OTTAWA-MONTREAL

PM 5 15	Lv VANCOUVER (UAL)	(PWT) Ar	PM 4 21
8 45	Lv SEATTLE (NWA)	Ar	10 00
16 35	Lv WINNIPEG	(CWT) Ar	12 15 <sup>5</sup>
	MINNEAPOLIS		
9 10	Lv ST. PAUL	Ar	12 50
	(Twin Cities Airport)		
11 15	Ar CHICAGO	Lv	10 30
11 55	Lv CHICAGO	Ar	5 10
2 55	Ar WINDSOR (AAL)	(EWT) Lv	3 45
3 20	Ar TORONTO	Lv	2 00
6 35	Ar OTTAWA	Lv	12 15
7 30	Ar MONTREAL	Lv	11 20
PM			AM

## PORTLAND-SEATTLE-SPOKANE-TWIN CITIES-FLORIDA

PM	AM	PM	Lv PORTLAND (UAL)	(PWT) Ar	PM
		1 52	(Via Seattle)	Ar	
		4 05	Lv SEATTLE	Ar	8 05
		5 50	Lv SPOKANE	(PWT) Ar	6 15
		10 45	Lv BILLINGS	(MWT) Ar	3 10
			MINNEAPOLIS		
1 30	12 40	4 35	Lv ST. PAUL	(CWT) Ar	10 20
			(Twin Cities Airport)		
	2 30		Lv MILWAUKEE	Ar	
3 35	3 20	7 00	Ar CHICAGO	Lv	8 00
6 45	9 10		Lv CHICAGO	(CWT) Ar	6 46
3 15	5 36		Ar JACKSONVILLE	(EWT) Lv	12 40
6 10	8 35		Ar MIAMI	Lv	9 50
AM	PM				PM

<sup>5</sup>Via Connecting Flight.

<sup>†</sup>Via connecting rail carrier.



# MONTREAL - BOSTON - NEW YORK - WASHINGTON - PITTSBURGH - CLEVELAND CINCINNATI - BUFFALO - DETROIT - CHICAGO

CONNECTIONS — EASTBOUND

	Flight 16		Flight 4				Flight 6				Flight 10			Flight 12			Flt. 8	Flight 2			
	AM	PM	AM		PM		AM		PM		AM			PM			PM	AM			
Portland (Via UAL & Seattle).....(PWT) Lv																				Lv (PWT).....Portland	
Seattle.....Lv																				(Via UAL & Seattle).....Seattle	
Spokane.....(PWT) Lv																				Lv (PWT).....Spokane	
Billings.....(MWT) Lv																				Lv (MWT).....Billings	
Winnipeg.....(CWT) Lv																				Lv (CWT).....Winnipeg	
Minneapolis.....Lv																				(Twin Cities Airport).....Minneapolis	
St. Paul.....Lv																				Lv.....St. Paul	
(Twin Cities Airport).....Ar																				(Twin Cities Airport).....Chicago	
Chicago.....Ar																					

CONNECTIONS — WESTBOUND

	Flight 1			Flight 7			Flight 3			Flt. 11	Flight 9			Flight 15			Flight 5		
	PM	AM	PM	PM	PM	PM	PM	PM	PM	AM	AM	AM	AM	AM	PM	PM	PM	PM	
Montreal (Via CAI).....(EWT) Lv																			Lv (EWT).....Montreal
Boston (Via AAL).....Lv																			(Via AAL).....Boston
New York.....Lv																			New York
Washington.....Lv																			Washington
Pittsburgh.....Lv																			Pittsburgh
Cleveland.....Lv																			Cleveland
Cincinnati.....Lv																			Cincinnati
Buffalo.....Lv																			Buffalo
Detroit.....(EWT) Lv																			Detroit
Chicago.....(CWT) Ar																			Chicago

①—Via Pennsylvania-Central Airlines.    ②—Via connecting flight.    \*—Complimentary meal served aloft after departure from station indicated.    †—Complimentary light refreshments served.    q—Via UAL

## Buy U. S. War Bonds

Buy them when you can and as many as you can. There's no limit to what we can contribute towards making our land the Stronghold of freedom and democracy.

## Send Express BY AIR!

... Have you discovered the economy and speed of Air Express? When time counts, put wings on your merchandise—at rates surprisingly low.



## AIR MAIL — ALL FLIGHTS!

### INFORMATION—RESERVATIONS—TICKET OFFICES—GROUND SERVICE

City	Information-Reservation	Ticket Office	Airport	Telephone	Miles from City	Conveyance (a)	Limousine Time	Fare
Billings, Mont.	Tel. 4141	26 Broadway	Municipal	2174	2NW	Yellow Cab	30 min.	\$.50
Bismarck, N. D.			Britten Field	826	2S	Red Cab	25 min.	.75
Boston, Mass.	Tel. E. Boston 2000	American Airlines, Statler Hotel	Municipal		1E	Boston Cab	40 min.	.75
Butte, Mont.	Tel. 3241	2 East Broadway	Municipal	6489	5S	Special Car	40 min.	1.00
Chicago, Ill.	Tel. State 4800	33 E. Monroe St.	Municipal	Portsm'th 6060	9SW	NWA Limousine	60 min.	1.00
Detroit, Mich.	Tel. Pingree 7000	AAL 1265 Washington Blvd.	City		6NE	Checker Cab	35 min.	1.60
Duluth, Minn.			Williamson-Johnson	Meirose 7447	7NW			
Fargo, N. D.	Tel. 4467	516 N. P. Avenue	Hector	8175	2NW	Konen Cab Co.	20 min.	.50
Grand Forks, N. D.	Tel. 134		Municipal		2 1/2NW	Discotah Cab Co.	30 min.	.50
Great Falls, Mont.	Tel. 5408	5 Third Street North	Municipal	4271	5SW		45 min.	.50
Helena, Mont.	Tel. 688	Municipal Airport	Municipal	688	2NE	Helena Cab	25 min.	.50
Los Angeles, Cal.	Tel. Michigan 8881	TWA, 516 W. 6th St.	Union Air Terminal		13N	Airdrome Tr. Co.	50 min.	1.10
Madison, Wis.	Tel. Fairchild 7161		New Municipal	Fairchild 7161	6NE	Checker Cab	30 min.	.75
Miles City, Mont.			Municipal	808 R 1	2 1/2NW	Milligan Taxi	20 min.	.50
Milwaukee, Wis.	Tel. Broadway 2206	112 East Wisconsin	County	Sheridan 8280	6S	Yellow Cab	45 min.	.75
Minneapolis, Minn.	Tel. Geneva 1655	Rand Tower	Wold-Chamberlain	Drexel 3651	7 1/2SE	Yellow Cab	6 min.	.75
Missoula, Mont.	Tel. 4114	Florence Hotel	Municipal	2471	5W	Yellow Cab	30 min.	.75
New York, N. Y.	Tel. Vanderbilt 6-2655	Airlines Terminal Bldg., 80 E. 42nd St.	La Guardia Field		8E	Limousine Service	35 min.	1.00
After bus. hrs. Sun. & Holidays	Tel. Havemeyer 6-3737				9 1/2SE	Rodgers Auto Rent	50 min.	1.10
Pittsburgh, Pa.	Tel. Grant 2400	TWA, 504 Wm. Penn Way	Municipal		1 1/2SE	Yellow Cab	30 min.	.45
Rochester, Minn.	Tel. 4360	Kahler Hotel Lobby	Rochester	3081	7SW	Blue & White-Yellow	50 min.	.75
St. Paul, Minn.	Tel. Cedar 6821	8 West 5th St.	Twin Cities Airport	Nestor 2966	13SE	S. F. Airdrome Trans.	45 min.	1.10
San Francisco, Cal.	Tel. Ekbrook 3701	TWA, 216 Stockton St.	Municipal		5 1/2SE	Yellow Cab	45 min.	.75
Seattle, Wash.	Tel. Seneca 4040	401 University Street	Boeing Field	Lander 3900	5NE	Yellow Cab	35 min.	.75
Spokane, Wash.	Tel. Riverside 7191	Lobby Davenport Hotel	Felts	Lakeview 1515	27N	Bus to Seattle	60 min.	
Tacoma, Wash.	Tel. Broadway 1015	903 Pacific Ave	Boeing Field, Seattle					
Washington, D. C.	After business hours	Sundays & Holidays — Tel. Enterprise 9955	Washington		4S	Taxi	15 min.	.90
Winnipeg, Man.	Tel. National 1998	812 15th St. N. W.	Stevenson	62-361	5W	Moore's	60 min.	.50

#### HOTELS, TRAVEL BUREAUS

If ground Transportation is desired passenger must inform Ticket Agent at time reservation is made.

(a)—Cab and Bus Companies giving special rates to Northwest Airlines passengers.

These rates apply between airports and "loop" districts.



## FARE INFORMATION

All fares shown hereunder are for information only and are subject to change and correction without notice. Official Northwest Airlines fares, rules and regulations are published in the Airlines Local and Joint Passenger Tariff No. 2, C. T. C. No. 3, C. A. B. No. 3, on file with the Civilian Aeronautical Board and the Board of Transport Commissioners for Canada and are open for inspection at any Northwest Airlines office.

These prices are subject to a 15% United States Transportation tax.

MAY 1, 1944

	Billings	Bismarck	Boston (e)	Butte	Chicago	De-troit (e)	Fargo	Grand Forks	Great Falls	Helena	Los Angeles (g)	Madison	Miami (e)	Miles City	Milwaukee	Mpls. St. Paul	Mis-soula	New York (e)	Portland (f)	Rochester	San Francisco (f)	Seattle	Spokane	Vancouver (j)	Washington D. C. (e)	Winnipeg
Billings		21.00	106.55	11.00	59.05	72.85	31.30	34.90	h9.60	11.00	59.80	54.25	127.20	7.50	56.55	42.55	17.00	97.90	47.15	46.15	73.75	39.95	26.25	46.60	94.80	41.70
Bismarck	21.00		85.55	32.00	38.05	51.85	10.30	13.90	30.60	32.00	80.80	33.25	106.20	13.50	35.55	21.55	38.00	76.90	68.15	25.15	94.75	60.95	47.25	67.60	73.80	20.70
Butte	11.00	32.00	117.55		70.05	83.85	42.30	45.90	h6.30			65.25	138.20	18.50	67.55	53.55	6.00	108.90	36.15	57.15	62.75	28.95	15.25	35.60	105.80	52.70
Chicago	59.05	38.05	47.50	70.05		13.80	27.75	31.35	68.65	70.05	112.16	6.30		51.55	4.15	16.50	76.05	38.85		14.30	125.60	99.00	85.30	100.00	35.75	38.15
Fargo	31.30	10.30	75.25	42.30	27.75	41.55		3.60	40.90	42.30	91.10	22.95	95.90	23.80	25.25	11.25	48.30	66.60	78.45	14.85	105.05	71.25	57.55	77.90	63.50	10.40
Grand Forks	34.90	13.90	78.85	45.90	31.35	45.15	3.60		44.50	45.90	94.70	26.55	99.50	27.40	28.85	14.85	51.90	70.20	81.05	18.45	108.65	74.85	61.15	81.50	67.10	6.80
Helena	11.00	32.00	117.55		70.05	83.85	42.30	45.90	h4.60			65.25	138.20	18.50	67.55	53.55	6.00	108.90	36.15	57.15	62.75	28.95	15.25	35.60	105.80	52.70
Madison	54.25	33.25	53.80	65.25	6.30	20.10	22.95	26.55	63.85	65.25	107.36		74.45	46.75	3.75	11.70	71.25	45.15	99.00	8.50	128.00	94.20	80.50	100.00	42.05	33.35
Miles City	7.50	13.50	99.05	18.50	51.55	65.35	23.80	27.40	17.10	18.50	67.30	46.75	119.70		49.05	35.05	24.50	90.40	54.65	38.65	81.25	47.45	33.75	54.10	87.30	34.20
Milwaukee	56.55	35.55	51.65	67.55	4.15	17.95	25.25	28.85	66.15	67.55	109.66	3.75	72.30	49.05		14.00	73.55	43.00	99.00	11.75	125.60	96.50	82.80	100.00	39.90	35.65
St. Paul & Minneapolis	42.55	21.55	64.00	53.55	16.50	30.30	11.25	14.85	52.15	53.55	95.66	11.70	84.65	35.05	14.00		59.55	55.35	89.70	3.60	116.30	82.50	68.80	89.15	52.25	21.65
Missoula	17.00	38.00	123.55	6.00	76.05	89.85	48.30	51.90	10.60	6.00	54.80	71.25	144.20	24.50	73.55	59.55		114.90		63.15	56.75	22.95	9.25	29.60	111.80	58.70
Portland (f)	47.15	68.15	146.50	36.15	99.00	112.80	78.45	82.05	40.75	36.15		99.00	175.15	54.65	99.00	89.70	31.77	137.85		93.30			20.90	13.85	132.80	85.25
Rochester	46.15	25.15	61.80	57.15	14.30	28.10	14.85	18.45	55.75	57.15	99.26	8.50	82.45	38.65	11.75	3.60	63.15	53.15	93.30		119.90	86.10	72.40	92.75	50.05	25.25
Seattle	39.95	60.95	146.50	28.95	99.00	112.80	71.25	74.85	33.55	28.95		94.20	167.15	47.45	96.50	82.50	22.95	137.85		86.10			13.70		132.80	78.05
Spokane	26.25	47.25	132.80	15.25	85.30	99.10	57.55	61.15	19.85	15.25		80.50	153.45	33.75	82.85	68.80	9.25	124.15	20.90	72.40	47.50	13.70		20.35	121.05	67.95
Vancouver (j)	46.60	67.60	147.50	35.60	100.00	113.80	77.90	81.50	40.20	35.60		100.00	175.05	54.10	100.00	89.15	29.60	138.85	13.85	92.75			20.35		132.80	84.70
Winnipeg	41.70	20.70	85.65	52.70	38.15	51.95	10.40	6.80	51.30	52.70	101.50	33.35	102.30	34.20	35.65	21.65	58.70	77.00	85.25	25.25	111.85	78.05	67.95	84.70	73.90	

(e) Via Chicago. (f) Via Seattle. (h) Priority passengers only can be accepted for passage between Great Falls and Billings, Butte or Helena. (g) Via Butte or Helena. (See note on inter-line passengers.) (j) Via United Air Lines Seattle-Vancouver.

**INTERLINE PASSENGERS** traveling over Northwest Airlines and Western Air Lines to cities beyond Helena or Butte will pay a fare based on the shorter routing whether the actual routing is via Helena or via Butte.

## GENERAL INFORMATION

**RESERVATIONS** must be made in advance as all seats are reserved. Space for which tickets have not been purchased will not be guaranteed. Reservations may be made at any Northwest Airlines' ticket office, at transportation or porters' desks in leading hotels, authorized travel bureaus, or offices of connecting lines.

Northwest Airlines may cancel any reservation if the person holding the reservation has not presented himself at the airport office of Northwest Airlines for the purpose of checking in at least ten minutes prior to the scheduled departure time of the flight for which the reservation was made.

**CANCELLATIONS:** The purchaser may receive a refund for the unused transportation providing the reservation is cancelled three hours prior to the scheduled flight departure.

**BAGGAGE:** Forty pounds of baggage including brief cases and hand luggage will be carried free on any ticket. Baggage in excess of 40 pounds will be charged for at the rate of 15% of the published one-way fare per pound, with a minimum charge of 25 cents. Baggage in excess of 50 pounds per passenger will be carried only by special arrangement. Pets will be accepted as baggage under certain conditions. Consult Northwest Airlines agent.

**CHILDREN'S FARES:** A child under two years of age will be carried free if held on lap. Children two years of age and over will be charged the applicable full fare. Children under eight years of age will not be carried unless accompanied by a full fare paying passenger.

**ROUND TRIP FARES:** There is no reduction for round trip fares. Round trip fares are two times the regular one way fares. Return coupon is not valid for transportation unless reservation has been confirmed.

**SCHEDULES** show the time at which planes may be expected to arrive at, or depart from stations, and to connect with other planes or trains, but the company will not be responsible for consequences arising from delays or from errors in the printed schedule. The time shown is subject to change without notice.

**STOP OVERTS** are permitted at any regularly scheduled stop, but passenger assumes responsibility of making necessary subsequent reservations.

**DINING SERVICE:** You are the guest of Northwest Airlines at stations designated in the regular time table and also in flight during meal time.

**LOST ARTICLES:** Left on planes refer to Traffic Dept., 1885 University Avenue, St. Paul 4, Minnesota.

**CAB SERVICE:** For the convenience of its passengers, Northwest Airlines will be glad to arrange bus or taxi transportation if notice is given Ticket Agent before departure of plane.

"ELECTRIC RAZORS AVAILABLE ON ALL FLIGHTS"

*Executive Offices, 1885 University Ave., St. Paul 4, Minn.*

**CROIL HUNTER**, President and General Manager  
**E. I. WHYATT**, Vice President and Treasurer  
**K. R. FERGUSON**, Vice President—Operations  
**A. E. FLOAN**, Secretary  
**R. L. SMITH**, Operations Manager  
**A. G. KINSMAN**, General Traffic Manager  
**F. R. ERICKSON**, Manager Air Mail and Express  
**JOSEPH A. FERRIS**, Director of Public Information  
**C. L. STEIN**, Director of Stewardess Service





NORTHWEST AIRLINES, INC.  
1885 University Ave., St. Paul 4, Minn.  
Return Postage Guaranteed

SEC. 562, P. L. & R.

★ ★ ★ ★ ★ ★ ★

**POSTMASTER:** If addressee has moved and address is known, notify sender on **Form 3547**, postage for which is guaranteed. In case of removal to another post office do not notify the addressee but hold the matter and state on **Form 3547**, amount of forwarding postage required which sender will promptly furnish.