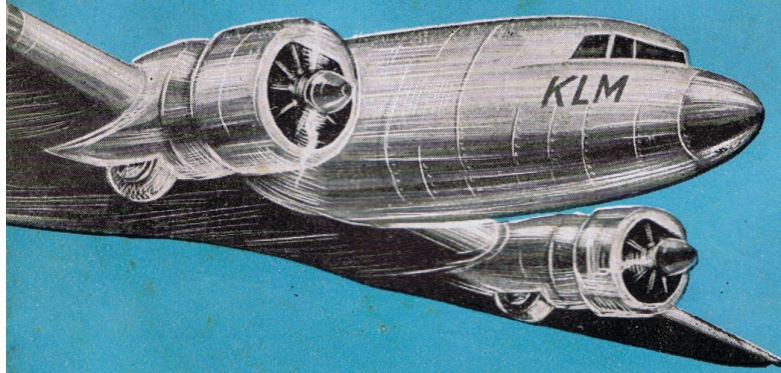


K L M

ROYAL DUTCH AIRLINES



AMSTERDAM—BATAVIA SUMMER SERVICE

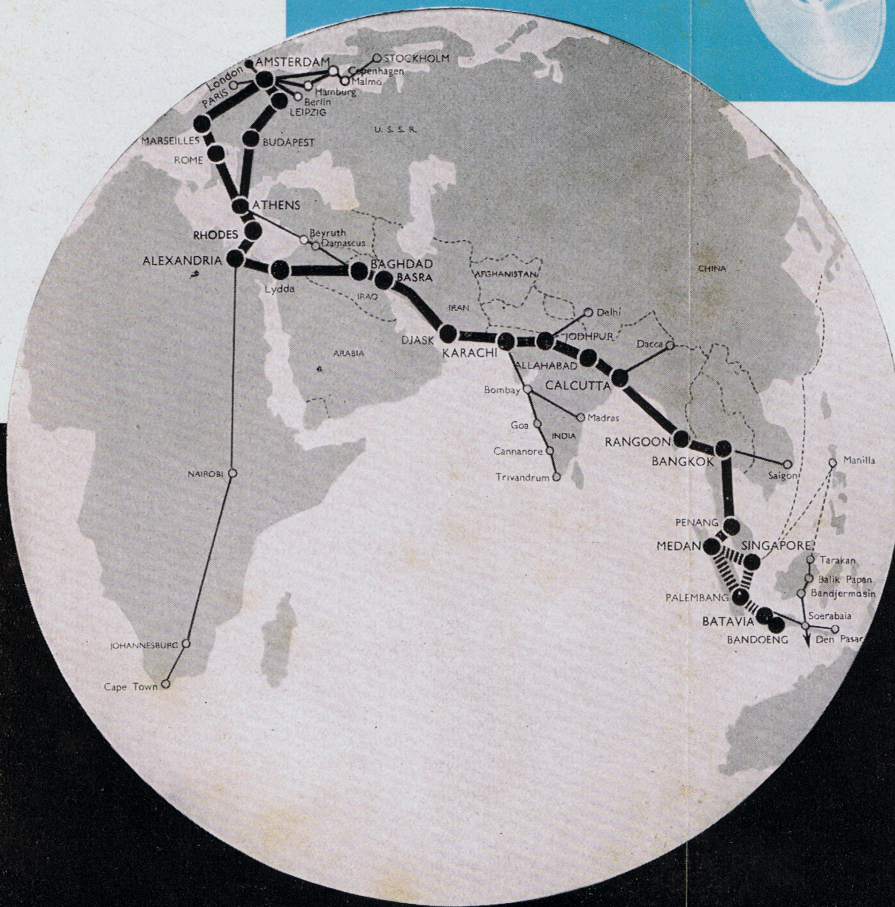
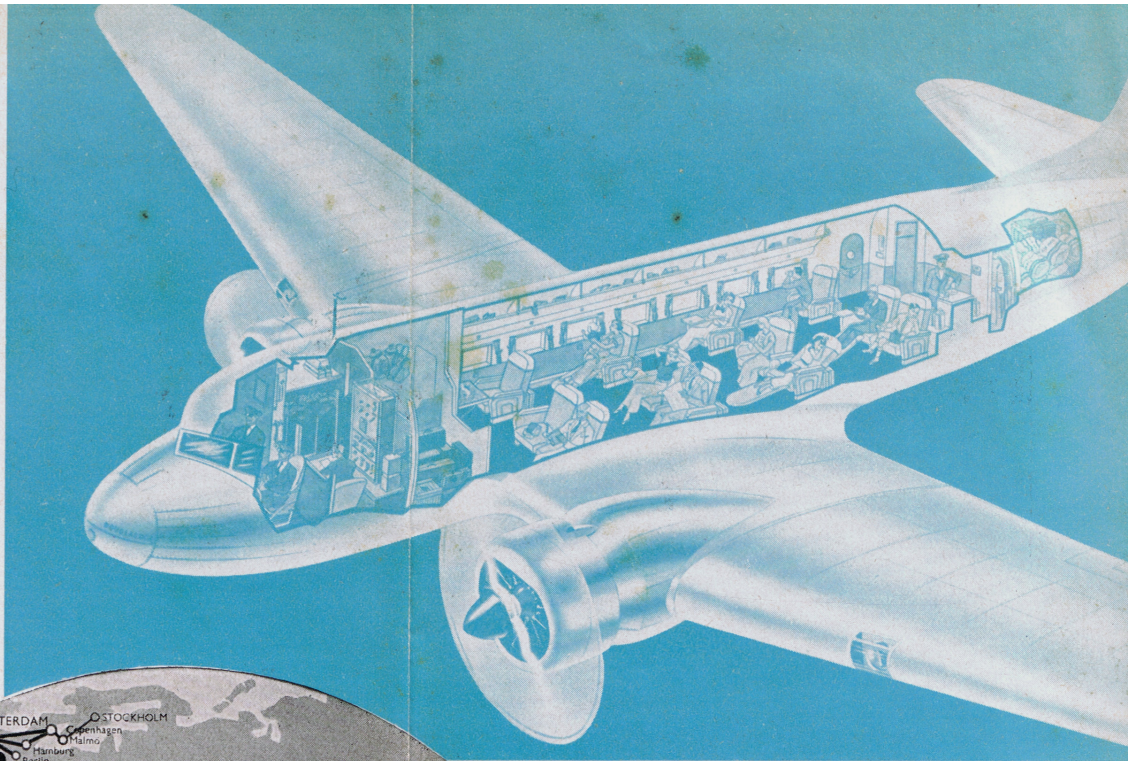
VALID FROM APRIL 7th to OCTOBER 2nd 1937

Subject to alteration.

All previous editions cancelled.

I N D E X

	Page
General Transport conditions . . .	3
Transport conditions for passengers	3
Connecting services	5
Transport of freight	5
K.L.M.-Offices	6
Booking-Agents	6
Timetable	12—13
Fares	15—22



FLYING DISTANCES

	K.M.	Miles
Amsterdam—Leipzig	525	326
Leipzig—Budapest	670	416
Budapest—Belgrade	325	202
Belgrade—Athens	870	540
Amsterdam—Marseilles	985	612
Marseilles—Rome	625	388
Rome—Brindisi	495	308
Brindisi—Athens	627	390
Athens—Rhodes	435	270
Rhodes—Alexandria	605	376
Alexandria—Lydda	490	305
Lydda—Baghdad	925	574
Baghdad—Basra	450	279
Basra—Bushire	340	211
Bushire—Djask	805	500
Djask—Karachi	953	592
Karachi—Jodhpur	615	382
Jodhpur—Allahabad	872	542
Allahabad—Calcutta	750	466
Calcutta—Akyab	535	333
Akyab—Rangoon	500	311
Rangoon—Bangkok	580	360
Bangkok—Penang	1000	621
Penang—Medan	260	161
Medan—Singapore	628	390
Singapore—Palembang	487	303
Palembang—Batavia	445	277
Batavia—Bandoeng	106	66

Amsterdam—Batavia (via Budapest)
14.065 K.M. = 8.737 Miles.

Amsterdam—Batavia (via Rome)
14.407 K.M. = 8.951 Miles.



Front part of a Douglas DC 3 cabin

TRANSPORT CONDITIONS

The transport of passengers, luggage and goods takes place under the "General Conditions of Carriage of Passengers, Baggage and Goods" based on the Warsaw Convention of 12-10-29. These conditions can be reviewed at each port of embarkation, and an extract can also be found inside the cover of every air ticket and consignment note issued by the Company.

FOR PASSENGERS

DEPARTURE. — Flights leave both Amsterdam and Batavia every Wednesday and Saturday. During the summer the scheduled travelling time is 5½ days for the eastbound, and 6 days for the westbound journey.

TRAVELLING CONVENIENCES. — Each passenger has a large comfortable lounge chair, which is adjustable. Several landings are made daily for refuelling purposes. Passengers then have time for the meals which the Company have had arranged for them. The cabin is scientifically ventilated and the temperature can be altered to suit the travellers' wishes. There is a lavatory on every plane.

The material which insulates the cabins against the temperature of the outer atmosphere at the same time makes them sound-proof, and even a whispered conversation can be carried on during the flight. Smoking is prohibited in accordance with International Regulations.

RESTRICTION OF BOOKINGS. — Local bookings within British India Burma included, cannot be accepted. For the routes also operated by the K.N.I.L.M. in the Netherlands East Indies the transport conditions of this company apply.

FARES. — All fares include hotel accommodation, meals and transport to and from the aerodromes.

CHILDREN. — If a separate seat is not required, children up to 3 years of age are carried at 10% of the fare. Children between 3 and 7 years of age, or children under 3 years occupying a separate seat, are carried at half the fare. No allowance for luggage is made for children.

RETURN TICKETS. — If taken in advance, return tickets are issued with a reduction of 10% on the amount of the two single fares. Return tickets are

valid for 12 months. If no return ticket is purchased in advance, a reduction of 10% is allowed on the section flown for the second time but in opposite direction, provided the passenger returns within a year; this reduction is only granted upon production of the "return-rebate certificate" which is attached to every single-trip ticket.

INTERCHANGEABILITY OF TICKETS. — Return tickets can be made available for travel by certain Steamship Lines upon adjustment of the fare. Rebooking abatement is allowed in some cases on airtickets when an outward single journey has been made by those Steamship Lines. (Details upon application).

BREAK OF JOURNEY. — Each stage of an interrupted journey must be paid for separately.

BOOKINGS. — As soon as a reservation becomes definite 25% of the fare must be deposited, and the remainder must be paid not later than 14 days before departure. As the number of seats in the planes is limited the Company reserve the right to withhold the acceptance of a booking for a section of the route only, until a few days before departure of the plane.

CANCELLATIONS. — In accordance with international regulations the following cancellation fees are payable: up to 14 days before departure 10% of the fare; from 14 days to 48 hours before departure 25% of the fare; less than 48 hours before departure 100% of the fare. Telegram costs incurred in cancelling, are to be borne by the passenger.

LUGGAGE. — Every passenger is allowed 20 K.G. (45 lbs.) of luggage free of charge. Half the freight rate is charged for luggage weighing from 20 to 40 K.G. and the full freight rate for luggage above 40 K.G. Passengers are only guaranteed the carriage of 20 K.G.

If consulted in good time the K.L.M. can make arrangements for the despatch of luggage by steamer at special rates. Every passenger is supplied by the Company with 2 specially light suit-cases, which can be attached under and behind the chairs, so that they are at hand throughout the journey. These suit-cases remain the property of the passenger.

ACCOMMODATION AND MEALS. — All meals and accommodation, as well as tips, are included in the fare. Drinks in the hotels, however, will be charged to the passenger excepting beer or mineral water at meals. The K.L.M. have made arrangements for the immediate conveyance of the passengers to the hotel after arrival of the plane at the nightstop.

INSURANCE. — The K.L.M. or their agents will always be pleased to offer their services in the effecting of insurances.

MONEY. — Since all costs incurred en route are included in the fare, the amount of money in various currencies to be taken, is reduced to a minimum. Pounds sterling can be changed by the agents and at the hotels.

PASSPORTS. — Against payment of the costs incurred, the K.L.M. or their agents are pleased to render assistance in matters connected with passports; otherwise the Company cannot accept any responsibility for difficulties experienced by passengers en route, owing to any incompleteness, inaccuracy or invalidity of their papers.

CAMERAS. — As in nearly all the countries along the route it is forbidden to take photographs or films from the air or on the aerodromes, it is necessary to have the camera or film apparatus sealed before departure, and to have them stored in the special trunk by one of the plane's officers.

CONNECTIONS. — The following services connect with the K.L.M. Amsterdam—Batavia air line: Alexandrië—Capetown by Imperial Airways Ltd. and South African Airways. Penang—Hongkong by Imperial Airways Ltd.

Baghdad—Damascus by Air France; Karachi—Bombay—Madras by Tata Air Lines; Bangkok—Sigon and Bangkok—Hanoi by Air France; Within the Netherlands East Indies: all the lines of the K.N.I.L.M.; Singapore—Australia by Qantas Empire Airways.

At Singapore, Batavia and Soerabaya there are also good connections by steamer to and from China, Japan, The Philippines, etc. The K.L.M. agents will gladly provide passengers with any information required regarding connections by the many services linking up with the K.L.M. in Europe.

TRANSPORT OF FREIGHT

Goods which cannot be sent as air parcel mail can be accepted as K.L.M. freight which must be sent carriage prepaid.

FREIGHT RATES. — Freight will be charged per 500 grams with a minimum of one kg.

For transit through Iraq an extra charge of 110% of the value is made per consignment, with a minimum of 2 shillings. For transit through Iran the charges depend on the weight and the nature of the goods.

BULKY PARCELS. — These are not charged for according to weight but according to dimensions. A charge equivalent to the freight tariff of 1 kg is made for each 10 dm³.

DOCUMENTS. — For a moderate remuneration the K.L.M. and their agents see to the drawing up of the necessary documents. A copy of the invoice is required for quick customs clearing.

GOODS FOR PAYMENT ON DELIVERY. — These can be accepted by special arrangement with the K.L.M.

INSURANCE. — The K.L.M. and their agents can insure goods at a low premium for the whole of the transport.

K. L. M. - OFFICES

AMSTERDAM (Netherlands) . . . a. City Office, Leidschoplein.
Telegr.: Kalmaera Amsterdam.
Teleph. 32300 (passengers department); 42302 (freight department); 35982 (enquiries)
b. Schiphol Airport and Central Booking Office for all K.L.M. services

Telegr.: Transaera Amsterdam.
Teleph. (day and night) 91521; bookings from abroad and general information: 25009 for bookings from agents.

BERLIN (Germany)
K.L.M. Representative, Tempelhof Airport.
Telegr.: Kalmaera Berlin.
Teleph. Barndorf (F 6) 5501.

BUDAPEST (Hungary)
Telegr.: Malert Oldenborgh Budapest.
Teleph. 88.8.88.

COPENHAGEN (Denmark)
K.L.M. Representative, Kastrup Airport.
Telegr.: Transaera Copenhagen.
Teleph. Kastrup 440 (office); Kastrup 580 (residence).

FRANKFURT (Germany)
K.L.M. Representative, c/o D.L.H., Airport Rhein-Main.
Telegr.: Transaera Frankfurt-Main.
Teleph. 40921.

THE HAGUE (Netherlands)
Head Office, Royal Dutch Airline (K.L.M.), 9 Hofweg.
Telegr.: Transaera The Hague.
Teleph. 160.070 and 77211.

HAMBURG (Germany)
K.L.M. Representative, Fuhlsbüttel Airport.
Telegr.: Transaera Hamburg.
Teleph. 395.541.

LONDON (England)
a. K.L.M. Representative, Horseferry House, Horseferry Road (adjoining Millbank).
Telegr.: Kalmaera London (office), Kalmaera Phone-London (inland telegrams).
Teleph. Victoria 6971, 6972, 6973 and 6974 (day and night).

b. K.L.M. Representative, Airport of London (Croydon).
Telegr.: Transaera Croydon.
Teleph. Croydon 3466, 3467, 3468 (day and night).

MILAN (Italy)
K.L.M. Representative, Taliedo Airport.
Telegr.: Kalmaera Milano.
Teleph. 35830.

PARIS (France)
K.L.M. Representative, Le Bourget Airport.
Telegr.: Kalmaera Paris TT.
Teleph. Bozaris 71.14, 71.15, 71.16, 71.17.

ROTTERDAM (Netherlands)
a. City Office, 115 Coolingsl.
Telegr.: Transaera Rotterdam.
Teleph. 57.780.

b. K.L.M. Office, Waalhaven Airport.
Telegr.: Transaera Rotterdam.
Teleph. 25.000.
Night-booking from 24.00—7.00 a. m. call Amsterdam 25.009.

CURACAË (Neth. West Indies)
K.L.M. Representative, De Ruyterplein 2.
Telegr.: Transaera Curacao.
Teleph. 72, 81, 505.

BOOKING - AGENTS

AKYAB (Burma)
Commander C. V. Price, Point Road.
Telegr.: Price Akyab.
Teleph. 7.

ALEPPO (Syria)
Rodolphe Puche Eng.
Telegr.: Rodolphe Puche Alep.

ALEXANDRIA (Egypt)
Messrs. F. van der Zee, 10 Rue Cléris Pacha.
P.O. B. 107.
Telegr.: Vanderzee Alexandria.
Teleph. 28636—28639.

ALLAHABAD (Br. India)
Messrs. Steele & Co., 13 Albert Road.
Telegr.: Steele Allahabad.
Teleph. 507.

ALOR STAR (Malaya)
Messrs. Guan Hin Co., 78 Pekin China
Telegr.: Guan Hin Alor Star.
Teleph. 65.

AMOY (China)
Java China Japan Line, Amoy Waterworks Building (See F.L.). The Bund.
Telegr.: Javaliin Amoy.

ANTWERP (Belgium) The Belgian Air Traffic Co. "S.A.B.E.N.A."
a. Duerne Aerodrome.
Telegr: Airabena-Duorne-Antwerp.
Teleph: 705.13.
b. City Office, Central Railway Station.
Telegr: Airabena-Antwerp.
Teleph: 375.34.
Cote I. Agropyraka, Etc.
2 Rue de la Métropole.
Teleph: 25.734.
Russell & Sonnet Ltd., 83 Customs Street E.
Telegr: Rusticated Auckland.
(New Zealand)

BAGHDAD (Iraq) Dwyer & Co. (Iraq) Ltd., Al-Rashid Street, P.O.B. 22.
Telegr: Alert Baghdad.
Teleph: 66 City Office, 1137 Aerodrome Office Baghdad West.

BANDOENG (Java) Royal Netherlands Indies Airways (K.N.I.L.M.).
Telegr: Aera Bandoeng.
Teleph: 2578 Andir Aerodrome. After office hours, 2340.
The Holland Steam Trading Co. Ltd., Postbox 77.
Telegr: Aera Bangkok.
Teleph: 3195 office, 3753 residence.
Ala, Licoria S.A., 94 Via Piccini.
(Italy)

BASRA (Iraq) Dwyer & Co. (Iraq) Ltd., Margil Airport.
Telegr: Alert Basra.
Teleph: 60201.
Messrs. Soon Aun & Co., B.O.C. Sub-Agents.
(Burma)

BASSEIN (Burma) Messrs. Soon Aun & Co., B.O.C. Sub-Agents.
(Burma)

BATAVIA (Java) Royal Netherlands Indies Airways (K.N.I.L.M.).
a. Sluibrug 2.
Telegr: Aera Batavia.
Teleph. Office: Weitevreden 3444, 3445, 3446. After office hours: Weitevreden 5029, 5031.
b. Tijlilitan Aerodrome.
Teleph: Messrs. 096 After office hours: Weitevreden 2474.
Air France, Rue Foch.
(Switzerland)

BEYROUT (Syria) Messrs. Airfrans Beyroust.
Teleph: 413.
Messrs. Harrison & Crossfield (Borneo) Ltd.
Telegr: Crossfield Beirut.
(Malaya)

BELGRADE (Yugo-Slavia) "Aeropost" (Yugo-Slavian Air Traffic Co.).
36 Kralja Petra.
Telegr: Aeropost Belgrade.
Teleph: 29.472, 29.496, 20.446.
Messrs. S. Dorabjee & Co.
(Iran)

BERLIN (Germany) Deutsche Luftbusse Berlin.
Lindenstrasse 35, S.W. 68.
Telegr: Luftbusse Berlin.
Teleph: Diskhoff 4641.
Volker Bros., Ballhofstrasse, P.O.B. 199.
Telegr: Engadine Bombay.
Teleph: 26.551.

BOMBAY (Br. India) Ala, Licoria S.A., 16 Via Regina Margherita.
Telegr: Aeropostas Brindisi.
Teleph: 1012.
b. Airport Office, Ala Littoria.
Telegr: Alera Brindisi.
Teleph: 1023.
Messrs. Dalgety & Co. Ltd., P.O.B. 1426F.
P.O.B. 1426F.
Telegr: Dalgety Brisbane.
(Australia)

BRUSSELS (Belgium) Belgian Air Traffic Company "S.A.B.E.N.A."
a. Haren Aerodrome.
Telegr: Airabena Haren Brussels.
Teleph: 15.88.80.
b. City Office, 145 Rue Royale.
Telegr: Airabena Brussels.
Teleph: 17.30.54, 17.40.00.
The Hungarian Air Traffic Co. (Magyar Legiforgalmi R.T.). Dorvaystrasse 7.
Telegr: Malort Budapest.
Teleph. City office: 1.608.80.
(Hungary)

BUSHIRE (Iran) Messrs. H. S. M. R. Kazerooni & Sons.
Telegr: Transaera Bushire.
Teleph. Kazeroni.
The Netherlands Traffic Agencies.
6 Sharia Minakri, P.O.B. 700.
Telegr: Nederaera Cairo.
Teleph: 41.559.
(Egypt)

CAIRO (Egypt) The Netherlands Traffic Agencies.
6 Sharia Minakri, P.O.B. 700.
Telegr: Nederaera Cairo.
Teleph: 41.559.
(Egypt)

CALCUTTA (Br. India) Java Bengal Line.
F-1 Clive Buildings, Postbox 71.
Telegr: Bengateera Calcutta.
Teleph: 640.

CANTON (China) The Holland China Trading Co. Ltd.
41a British Consulate, Shansien.
Telegr: Hochland Canton.
Teleph: 1753.

CAPTOWN (South Africa) The Burma Oil Co. Ltd.
Telegr: Burmello Chittagong.
Teleph: 150, 151.
Messrs. Harriess Ramay Proprietary Ltd.
(N. Zealand)

CHITTAGONG (N. Zealand) The Burma Oil Co. Ltd.
Teleph: 150, 151.
Messrs. Harriess Ramay Proprietary Ltd.
(N. Zealand)

CHRISTCHURCH (N. Zealand) The Burma Oil Co. Ltd.
Teleph: 150, 151.
Messrs. Harriess Ramay Proprietary Ltd.
(N. Zealand)

COLOMBO (Ceylon) Messrs. Aiken Spence & Co. Ltd.
P.O.B. 3.
Telegr: Aiken Colombo.
Teleph: 770.

COPENHAGEN (Denmark) Det Danske Luftfartsselskab (D.D.L.), Vesterbrogade 2.
Telegr: Luftfart Copenahagen.
Teleph: C 800.
Messrs. W. H. Winning & Co.
(China)

DAIREN (China) Telegr: Jawaljo Dairen.
(China)

DANASCUS (Syria) Air France, 30 Avenue Fouad ler.
Telegr: Airfrans Damasceus.
Teleph: 12.20.
Messrs. Sayed Mohammed Saleh & Sons.
(Iran)

DIJAK (Iran) Messrs. Sayed Mohammed Saleh & Sons.
Telegr: Sayed Jask.
Messrs. Harrison & King Irwin Ltd.
(Italy)

FOOCHOW (China) All offices of the Cie. Air France.
FRANCE

GENOA (Italy) Agenzia Marittima Olandese S.A., 18 Via Cairoli.
P.O.B. 471.
Telegr: Hollandia Genova.
Teleph: 52.845, 52.842.

GERMAN All offices of the Deutsche Luftbusse A.G.
Messrs. Curtzei Jundsheli Khoodhoy & Co. (Baluchistan)
Telegr: Cujahood Gwadar.
Hermann Tetz Travel Office, Juffa Road, P.O.B. 104.
(Palestine)

HANKOW (China) Messrs. Harrison & King Irwin Ltd.
Telegr: Crossfield Hankow.
(China)

HONGKONG (China) Java China Japan Line, York Building, Chester Road.
Telegr: Javalljo Hongkong.
The Borneo Company Ltd.
(Malaya)

IPOH (Malaya) Telegr: Borneo Ipoh.
(Malaya)

ISTANBUL (Turkey) Societe Commerciale Neerlandaise, P.O.B. 433.
Telegr: Neerlandia Istanbul.
Teleph: 221.49, 224.65 office, 1885 residence.
(Turkey)

IZMIR (Turkey) Messrs. Fratelli Sperco, P.O.B. 39.
Telegr: Sperco Izmir.
Teleph: 2006, 2005, 2663.
Boltane & Caroni Ltd.
(Palestine)

JAFFA (Palestine) Harbour Street, P.O.B. 152.
Telegr: Betca Jaffa.
Teleph: 1207.
W. Fax Travel Office, Hotel Fat Building, P.O.B. 534.
Teleph: 1753.

JERUSALEM (Palestine) Telegr: Fatravel Jerusalem.
Teleph: 1753.

JESSELTON (Br. N. Borneo) Messrs. Harrison & Crossfield (Borneo) Ltd.
Telegr: Crossfield Jesselton.
(Br. India)

JHANSI (Br. India) Messrs. Abbott Bros., Abbott Road.
Teleph: 1023.
Messrs. Sanghi Bros.
(Br. India)

JODHPUR (Br. India) Messrs. Sanghi Bros.
Teleph: 149 office; 153 residence.
Messrs. Volkair Bros.
(Br. India)

KARACHI (Br. India) Volkair Building, Mc. Lead Road, P.O.B. 22.
Telegr: Volkair Karachi.
Teleph: 15.

KOBE (Japan) Java China Japan Line, Meika Building.
Akaishi Bashi.
Telegr: Javalljo Kobe.
(Japan)

KUALA LUMPUR (Malaya) The Borneo Co. Ltd.
Telegr: Borneo Kuala Lumpur.
(Malaya)

KUCHING (Sarawak) Messrs. Kuching.
(Sarawak)

LARUAN (Malaya) Messrs. Harrison & Crossfield (Borneo) Ltd.
Telegr: Crossfield Laruan.
(Malaya)

LEIPZIG (Germany) The Deutsche Luftbusse A.G.
Schkeuditz Airport.
Telegr: Luftbusse Leipzig.
Teleph. Schkeuditz 582.
(Germany)

LINGEH (Iran) Messrs. Hajj Razi Hassan Razi Saadi & Co.
Telegr: Raitshasan Lingeh.
(Iran)

LIEBON (Portugal) Servicos Aereos Portugueses Ltd.
3 Avenida da Liberdade.
b. City Assistant & Co. Ltda., Praça Duque da Terceira 4a.
Telegr: Antonia Lisboa.
Teleph: 222.71, 222.72, 222.73.
Messrs. Wm H. Miller & Co. Ltd. (Head Agents for the United Kingdom), Greener House, Haymarket 46/48.
Telegr: Bataviline Lesaqueur London.
Teleph: Whitehall 7331.
W. Fax Travel Office, Hotel Fat Building, P.O.B. 534.
Teleph: 1753.

LONDON (England) Messrs. Volkair Madras.
Teleph: 2823.
Messrs. Jime Darby & Co. Ltd.
Telegr: Goldcher Malta.
Messrs. O. F. Collier & Sons.
(Philippine Islands)

LYDDA (Palestine) Telegr: Fatravel Jerusalem.
Teleph: Whitehall 7331.
W. Fax Travel Office, Hotel Fat Building, P.O.B. 534.
Teleph: 1753.

MADRAS (Br. India) Messrs. Volkair Madras.
Teleph: 2823.
Messrs. Jime Darby & Co. Ltd.
Telegr: Goldcher Malta.
Messrs. O. F. Collier & Sons.
(Philippine Islands)

MANILA (Philippine Islands) Eastern & Philippine Shipping Agencies Ltd.
8-15 Escoto (corner Jones Bridge), P.O.B. 2726.
Telegr: Javalljo Manila.
Teleph: 2.26.23 & 2.26.26.

MARSEILLES (France) a. Marignone Airport.
Telegr: Airfrans Marignone.
Teleph. Marignone 12.
b. City Office, 1 rue Papire.
Telegr: Airfrans Marseille.
Teleph. Colbert 34-47.
Royal Netherlands Indies Airways (K.N.I.L.M.).
Telegr: Aera Medan.
Messrs. John Sanderson & Co.
111 William Street, P.O.B. 258.
Telegr: Corio Melbourne.
Messrs. How West Beng Co.
B.O.C. Sub-Agents.
Telegr: Guanhee Mergui.
Messrs. Hillier & Co., Hillier Hotel.
Telegr: Hillier Meramatruh.
Assistan in Charge of the B.O.C. Branch Depot.
(Burma)

MELBOURNE (Australia) Messrs. John Sanderson & Co.
111 William Street, P.O.B. 258.
Telegr: Corio Melbourne.
Messrs. How West Beng Co.
B.O.C. Sub-Agents.
Telegr: Guanhee Mergui.
Messrs. Hillier & Co., Hillier Hotel.
Telegr: Hillier Meramatruh.
Assistan in Charge of the B.O.C. Branch Depot.
(Burma)

MERUI (Burma) Messrs. John Sanderson & Co.
111 William Street, P.O.B. 258.
Telegr: Corio Melbourne.
Messrs. How West Beng Co.
B.O.C. Sub-Agents.
Telegr: Guanhee Mergui.
Messrs. Hillier & Co., Hillier Hotel.
Telegr: Hillier Meramatruh.
Assistan in Charge of the B.O.C. Branch Depot.
(Burma)

MERSA MATRUH (Egypt) Messrs. Hillier & Co., Hillier Hotel.
Telegr: Hillier Meramatruh.
Assistan in Charge of the B.O.C. Branch Depot.
(Burma)

MOLLEIN (Burma) Messrs. Burma Oil Moulmein.
(Burma)

MUAR (Malaya) Telegr: Simit Muar.
Messrs. Natchuran Ramusuk.
(Br. India)

NASHIRAD (U.S.A.) a. Pan American Airways Inc.
(Head Agents for U.S.A.), 135 E. 42nd Street.
Telegr: Panair New York.
b. C. H. Rawlin Eq. (Special K.L.M.-Representative), Chrysler Building, Lexington Avenue & 42nd Street.
Rooms 520-524.
Telegr: Holteimcom New York.
Teleph: Murray Hill 2-6428.
Det Norske Luftfartsselskap, Fred. Olsen & Bergenske A.S., Fred. Olsenstg. 2.
Telegr: Alnorway Oslo.
Teleph: 1270.

OSLO (Norway) Det Norske Luftfartsselskap, Fred. Olsen & Bergenske A.S., Fred. Olsenstg. 2.
Telegr: Alnorway Oslo.
Teleph: 1270.

PAKAN BAROE (Sumatra) Bataviane Perdequim Nij.
Telegr: B.P.M. Pakanbaroe.
The Royal Packet Navigation Co. (K.P.M.).
Telegr: Aera Palembang.
Teleph: 134. After office hours: 348, Aerodrome 547.
Air France (Head Agents for France).
2 Rue Scotch.
Telegr: Airfransag Paris.
Teleph. Opéra 41-00.
a. The Royal Packet Navigation Co. (K.P.M.).
31 Beach Street, P.O.B. 338.
Telegr: Transaera Penang.
b. The Borneo Company Ltd.
Telegr: Borneo Penang.
Teleph: 412.
Mac. Robertson Miller Aviation Co.
(Australia)

PERTH (Australia) C. L. Evers Eq., 23 Quai Sultan Hussein, P.O.B. 16.
Teleph: 250.
Telegr: Evership Port Said.
(Czechoslovakia)

PRAGUE (Czechoslovakia) Československá Letecká Společnost.
38 Vodňanský.
Telegr: Avioavia Praha.
Teleph: 2944, 2798.

QUILON (Br. India) Messrs. Harrison Crossfield Ltd.
Telegr: Crossfield Quilon.
(Burma)

RANGOON (Burma) Messrs. Husnik & Co. Ltd., P.O.B. 119.
98 Tsechi Hc Tulyay street.
Telegr: Husnik Rangoon.
Teleph: 405 office; 1646 residence.
Messrs. Travasio Rhodes Egeo.
Teleph: 402 office; 402 residence.
(Italy)

RHODES (Aegean Sea) Telegr: Travasio Rhodes Egeo.
Teleph: 402 office; 402 residence.
(Italy)

ROME (Italy) Ala Littoria S.A., Aeroporto del Littorio.
Telegr: Aero-Ala Littoria-Rome.
Teleph: 864.151, 864.152, 864.153, 864.154.
Air France (Head Agents for Indo China).
4 rue Catinat.
Telegr: Airfrans Saigon, Teleph. 911.
b. Messrs. Diebheim & Co.
Telegr: Diebheim Saigon.
10 rue Maitland - P.O.B. 209.
Telegr: Allaloufo Saloniki.
Teleph: 22-42.
Messrs. Harrison Crossfield (Borneo) Ltd.
Telegr: Crossfield Sandakan.
Messrs. U. Nyeen, B.O.C. Sub-Agents.
Telegr: Uryvel Sandaway.
Messrs. Sims Darby & Co. Ltd.
(Malaya)

SANDAKAN (Br. N. Borneo) Messrs. Harrison Crossfield (Borneo) Ltd.
Telegr: Crossfield Sandakan.
Messrs. U. Nyeen, B.O.C. Sub-Agents.
Telegr: Uryvel Sandaway.
Messrs. Sims Darby & Co. Ltd.
(Malaya)

SEREMBAN (Malaya) Telegr: Simit Seremban.
(China)

SHANGHAI (China) Java China Japan Line.
Brunner Mond Building, 133 Szechuen Road.
Telegr: Javalljo Shanghai.
Teleph: 16.247.
Royal Netherlands Indies Airways (K.N.I.L.M.).
49 Stamford Road.
Telegr: Aera Singapore.
Teleph: 7855.

SINGAPORE (Malaya) Air France, 5 Boulevard Doudoukoff.
Telegr: Airfrans Sofia.
Teleph: 41.49 city office. Bojournicht aerodrome.
Air France.
Telegr: Namrolf Stockholm.
Teleph: 220000.
b. Booking Office: Flugpavilion, Nyropgatan.
Telegr: Airfricke Stockholm.
Teleph: 10.38.15; 10.38.17.

SOPIA (Bulgaria) A.B. Anzarspanski 1 Kungsholmsstr.
Telegr: Namrolf Stockholm.
Teleph: 220000.

STOCKHOLM (Sweden) a. A.B. Anzarspanski 1 Kungsholmsstr.
Telegr: Namrolf Stockholm.
Teleph: 220000.
b. Booking Office: Flugpavilion, Nyropgatan.
Telegr: Airfricke Stockholm.
Teleph: 10.38.15; 10.38.17.

SUEZ (Egypt) Diacris Shipping Agency, P.O.B. 26.
Telegr: Diacris Suez.
Teleph: 149, 352.
Java China Japan Line.
Custom Road.
Telegr: Javalljo Swatow.
(China)

SWATOW (China) The Royal Packet Navigation Co. (K.P.M.).
Teleph: BVV2381, BVV2382, BVV2383.
Telegr: Paketaart Sydney.
Teleph: BVV2381, BVV2382, BVV2383.
Messrs. Boyd & Co.
Telegr: Javalljo Taipei.
Koo Chang Chan Estg., B.O.C. Sub-Agent.
(Burma)

TAIPEI (Formosa) Telegr: Javalljo Taipei.
Koo Chang Chan Estg., B.O.C. Sub-Agent.
(Burma)

TAVOY (Burma) Telegr: Kerawene Tavoy.
Abrahamoff Brothers.
2 Haral Street, P.O.B. 48.
Telegr: Abrahamoff Tel Aviv.
Teleph: 218.

TEL AVIV (Palestine) Telegr: Abrahamoff Tel Aviv.
Teleph: 218.

VICTORIA POINT (Burma) S. Booth Russell Eq.
Telegr: Russel Victoriapoint.
(Austria)

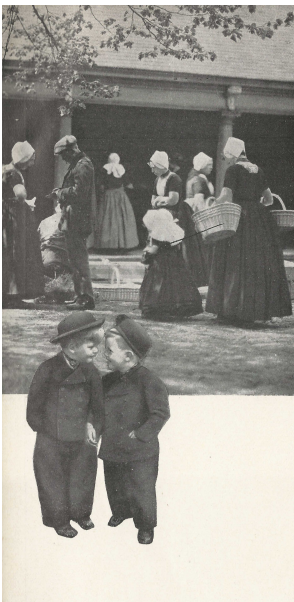
VIENNA (Austria) Oesterreichische Luftverkehrs A.G.
Aerodrom Wien.
Teleph: F. 28.3.95, R. 28.4.95, R. 27.0.03.
Polskie Linie Lotnicze "LOT", Nowogrodzka 49.
Telegr: Lot Warsaw.
Teleph: 563.60.
(Poland)

WARSAW (Poland) Telegr: Lot Warsaw.
Teleph: 563.60.
(Poland)

WELLINGTON (New Zealand) Messrs. Johnson & Co. Ltd., P.O.B. 1493.
Telegr: Simeon Wellington.
(Japan)

YOKOHAMA (Japan) Messrs. H. S. Wierum & Co. Ltd.
25 Yamabishi-cho.
Telegr: Javalljo Yokohama.
Swissair Traffic Co. Ltd., 7 Place de la Gare.
Telegr: Airfricke Zurich.
Teleph: 73.153 (Day and night).
(Switzerland)

Further Messrs. Thos. Cook & Sons and Wagon Lits, The American Express Company, Hotel Europäischer Reisebüro, Compagnia Italiana del Turismo (C.I.T.), Lissone-Lindeman and all other officially recognized Travel Offices are to be considered as K.L.M. Agents.



Some day we will fly
to the Dutch East Indies,
I as a commander and
you as a wireless operator.

TIME TABLE

		EAST BOUND			
		Loc. T.	G.M.T.		
Wednesday and Saturday	AMSTERDAM . . . Dep.	6.00	4.60		
	LEIPZIG Arr.	* 7.45	6.45	2nd Breakfast	
	Dep.	* 8.15	7.15		
	BUDAPEST Arr.	* 10.45	9.45		
Thursday and Sunday	ATHENS Arr.	* 11.30	10.30	Luncheon on Board	
	Dep.	5.45	4.45		
	RHODES Arr.	7.30	5.30	2nd Breakfast	
	Dep.	8.00	6.00		
Friday and Monday	ALEXANDRIA Arr.	10.00	8.00		
	Dep.	10.30	8.30	Luncheon	
	LYDDA Arr.	12.30	10.30		
	Dep.	13.00	11.00		
Saturday and Tuesday	BAGHDAD Arr.	17.30	14.30	Tea	
	Dep.	18.00	15.00		
	BASRA Arr.	19.45	16.45	2nd Breakfast and luncheon on board	
	Dep.	4.15	3.15		
Sunday and Wednesday	DJASK Arr.	9.45	5.50		
	Dep.	10.30	6.35	Tea	
	KARACHI Arr.	15.45	11.55		
	Dep.	16.30	12.40		
Monday and Thursday	JODHPUR Arr.	18.45	13.55		
	Dep.	5.30	23.30		
	ALLAHABAD Arr.	8.15	3.45	2nd Breakfast	
	Dep.	8.45	3.15		
Tuesday and Friday	Arr.	12.00	8.05	Luncheon	
	CALCUTTA Dep.	12.45	6.50		
	Arr.	17.30	11.00		
	RANGOON Dep.	5.30	23.00		
Wednesday and Saturday	Arr.	8.15	3.15	2nd Breakfast	
	BANGKOK Dep.	8.45	1.45		
	Arr.	13.00	5.40		
	PENANG Dep.	13.30	6.30	Luncheon	
Thursday and Sunday	Arr.	13.45	7.15		
	MEDAN Dep.	14.30	8.00		
	Arr.	17.45	10.25		
	SINGAPORE Dep.	6.30	22.40	Refreshments	
Friday and Monday	Arr.	7.45	9.45		
	PALEMBANG Dep.	8.00	1.00		
	Arr.	10.00	2.30		
	BATAVIA Dep.	10.45	3.15		
Tuesday and Friday	Arr.	11.15	3.45		
	BANBOENG Arr.				

Optional landings at: BELGRADE, BUSHIRE and AKYAB.
*) From the 7th April till and incl. the 19th May one hour later.

		WEST BOUND			
		Loc. T.	G.M.T.		
Wednesday and Saturday	BANBOENG Dep.	9.00	1.30		
	BATAVIA Arr.	9.30	2.00	Refreshments	
	Dep.	10.30	3.00	Luncheon on Board	
	PALEMBANG Arr.	11.45	4.45		
Thursday and Sunday	Dep.	12.15	5.15		
	SINGAPORE Arr.	14.30	7.10		
	Dep.	15.00	7.40		
	MEDAN Arr.	16.45	10.15	2nd Breakfast	
Friday and Monday	Dep.	6.00	23.30		
	PENANG Arr.	8.00	9.00		
	Dep.	8.30	1.10	Luncheon	
	BANGKOK Arr.	12.00	5.00		
Tuesday and Friday	Dep.	12.45	5.45		
	RANGOON Arr.	14.45	8.15	Refreshments	
	Dep.	6.00	23.30		
	CALCUTTA Arr.	9.30	3.25		
Wednesday and Saturday	Dep.	10.00	4.05	Luncheon	
	ALLAHABAD Arr.	12.30	7.00		
	Dep.	13.15	7.45		
	JODHPUR Arr.	16.45	12.55		
Thursday and Sunday	Dep.	6.00	6.30	2nd Breakfast	
	KARACHI Arr.	8.30	3.00		
	Dep.	9.15	3.45	Luncheon on Board	
	DJASK Arr.	11.15	7.25		
Friday and Monday	Dep.	11.45	7.55		
	BASRA Arr.	15.45	12.45	Tea	
	Dep.	16.15	13.15		
	BAGHDAD Arr.	18.00	15.00	2nd Breakfast	
Tuesday and Friday	Dep.	5.30	23.00		
	LYDDA Arr.	8.30	6.30		
	Dep.	9.00	7.00		
	ALEXANDRIA Arr.	11.00	9.00	Luncheon	
Wednesday and Saturday	Dep.	11.30	9.30		
	RHODES Arr.	14.00	12.00		
	Dep.	14.45	12.45		
	ATHENS Arr.	16.30	14.30		
Thursday and Sunday	Dep.	6.00	4.00	2nd Breakfast	
	BUDAPEST Arr.	9.45	8.45		
	Dep.	10.15	9.15		
	LEIPZIG Arr.	13.00	12.00	Luncheon	
Friday and Monday	Dep.	13.45	12.45		
	AMSTERDAM Arr.	* 16.15	14.55		

Optional landings at: BELGRADE, BUSHIRE and AKYAB.
*) From the 7th April till and incl. the 20th May one hour earlier.



He had never been any further than
from his village to his rice-fields
. and the K.L.M flies in 5 1/2
days from Amsterdam to Batavia.

SUBJECT TO ALTERATION WITHOUT NOTICE

F A R E S

ALEXANDRIA to:

	Single	Return	Exc. luggage and freight per Kilogr.
London	£ 46.	72.	—
Amsterdam	40.	72.	—
Leipzig	35.	65.	—
Budapest	28.	50.	—
Athens	16.	25.	—
Rhodes	15.	18.	—
Lydia	27.	12.12.	—
Baghdad	32.	48.12.	—
Basra	37.	57.12.	—
Karachi	50.	90.	—
Jodhpur	56.	100.16.	—
Allahabad	67.	123.12.	—
Calcutta	74.	133.4.	—
Rangoon	87.	154.12.	—
Bangkok	107.	192.12.	—
Penang	116.	208.16.	—
Medan	120.	216.	—
Singapore	123.	221.8.	—
Palembang	132.	237.12.	—
Batavia	137.	244.12.	—
Bandoeng	138.	248.8.	—

ATHENS to:

	Single	Return	Exc. luggage and freight per Kilogr.
London	£ 32.	57.12.	—
Amsterdam	30.	56.	—
Leipzig	25.	45.	—
Budapest	18.	32.8.	—
Rhodes	8.	14.8.	—
Alexandria	14.	25.4.	—
Lydia	21.	37.16.	—
Baghdad	28.	49.8.	—
Basra	33.	57.8.	—
Karachi	41.	70.16.	—
Jodhpur	47.	82.12.	—
Allahabad	56.	97.12.	—
Calcutta	64.	111.4.	—
Rangoon	77.	130.12.	—
Bangkok	97.	174.12.	—
Penang	106.	188.16.	—
Medan	110.	196.	—
Singapore	113.	201.8.	—
Palembang	122.	218.16.	—
Batavia	127.	225.12.	—
Bandoeng	128.	228.8.	—

ALLAHABAD to:

	£	10s	6d
London	101.	181.16.	—
Amsterdam	101.	181.16.	—
Leipzig	96.	172.16.	—
Budapest	87.	160.4.	—
Athens	77.	138.12.	—
Rhodes	73.	131.8.	—
Alexandria	67.	120.12.	—
Lydia	61.	111.12.	—
Baghdad	51.	91.16.	—
Basra	46.	82.16.	—
Bangkok	40.	72.	—
Penang	35.	65.	—
Medan	34.	64.	—
Singapore	36.	66.	—
Palembang	40.	74.	—
Batavia	42.	78.	—
Bandoeng	43.	80.	—

BAGHDAD to:

	£	10s	6d
London	62.	111.12.	—
Amsterdam	62.	111.12.	—
Leipzig	57.	102.12.	—
Budapest	50.	95.	—
Athens	38.	68.8.	—
Rhodes	34.	61.4.	—
Alexandria	27.	48.12.	—
Lydia	20.	36.	—
Basra	25.	45.8.	—
Karachi	31.	55.8.	—
Jodhpur	35.	63.8.	—
Allahabad	41.	75.8.	—
Calcutta	48.	88.8.	—
Rangoon	57.	104.8.	—
Bangkok	72.	129.12.	—
Penang	78.	142.8.	—
Medan	80.	146.8.	—
Singapore	83.	151.8.	—
Palembang	92.	166.12.	—
Batavia	96.	174.8.	—
Bandoeng	104.	188.8.	—
Singapore	107.	192.12.	—
Palembang	116.	208.16.	—
Batavia	121.	216.12.	—
Bandoeng	122.	219.12.	—

AMSTERDAM to:

	Gld.	Gld.	Gld.
Leipzig	96.	96.	0.55
Budapest	115.	207.	1.20
Athens	228.	405.	2.15
Rhodes	250.	450.	2.25
Alexandria	300.	540.	1.60
Lydia	353.	635.	1.80
Baghdad	465.	837.	2.35
Basra	522.	954.	2.50
Karachi	638.	1168.	3.50
Jodhpur	683.	1229.	3.45
Allahabad	758.	1364.	3.80
Calcutta	810.	1458.	4.05
Rangoon	950.	1700.	4.50
Bangkok	1050.	1890.	5.25
Penang	1150.	2070.	6.75
Medan	1200.	2160.	7.25
Singapore	1250.	2250.	7.25
Palembang	1300.	2340.	7.50
Batavia	1350.	2430.	7.75
Bandoeng	1353.	2436.	7.80

BANDOENG to:

	Gld.	Gld.	Gld.
London	1355.	2439.	7.80
Amsterdam	1355.	2439.	7.80
Leipzig	1265.	2277.	7.50
Budapest	1315.	2367.	7.30
Athens	1150.	2142.	7.
Rhodes	1165.	2097.	6.85
Alexandria	1120.	2016.	6.65
Lydia	1062.	1911.	6.35
Baghdad	975.	1760.	5.95
Basra	954.	1721.	5.85
Karachi	1089.	1967.	6.35
Jodhpur	1153.	2081.	6.55
Allahabad	1257.	2267.	7.25
Calcutta	1340.	2412.	7.55
Rangoon	1540.	2772.	8.55
Bangkok	1720.	3120.	9.65
Penang	1860.	3342.	10.55
Medan	1920.	3480.	11.15
Singapore	1980.	3570.	11.35
Palembang	2070.	3753.	11.85
Batavia	2120.	3840.	12.15
Bandoeng	2150.	3900.	12.35

F A R E S

BANGKOK to:

	Single	Return	Exc. luggage and freight per Kilogr.
London	£ 140.	252.	—
Amsterdam	140.	252.	—
Leipzig	135.	243.	—
Budapest	108.	200.	—
Athens	117.	210.12.	—
Rhodes	113.	203.8.	—
Alexandria	107.	192.12.	—
Lydia	102.	183.12.	—
Baghdad	92.	165.12.	—
Basra	97.	174.8.	—
Karachi	57.	102.12.	—
Jodhpur	56.	99.	—
Allahabad	60.	108.	—
Calcutta	67.	120.12.	—
Rangoon	78.	140.12.	—
Bangkok	97.	174.12.	—
Penang	106.	188.16.	—
Medan	110.	196.	—
Singapore	113.	201.8.	—
Palembang	122.	218.16.	—
Batavia	127.	225.12.	—
Bandoeng	128.	228.8.	—

BUDAPEST to:

	Single	Return	Exc. luggage and freight per Kilogr.
London	£ 190.	342.	—
Amsterdam	190.	342.	—
Leipzig	180.	324.	—
Athens	200.	360.	—
Rhodes	245.	441.	—
Alexandria	245.	441.	—
Lydia	240.	432.	—
Baghdad	210.	378.	—
Basra	210.	378.	—
Karachi	120.	216.	—
Jodhpur	115.	207.	—
Allahabad	125.	225.	—
Calcutta	140.	252.	—
Rangoon	165.	297.	—
Bangkok	195.	351.	—
Penang	210.	378.	—
Medan	215.	387.	—
Singapore	220.	396.	—
Palembang	240.	432.	—
Batavia	245.	441.	—
Bandoeng	245.	441.	—

BASRA to:

	£	10s	6d
London	67.	120.12.	—
Amsterdam	67.	120.12.	—
Leipzig	62.	111.12.	—
Budapest	55.	99.	—
Athens	48.	77.8.	—
Rhodes	41.	73.16.	—
Alexandria	32.	57.12.	—
Lydia	25.	45.8.	—
Baghdad	6.	10.16.	—
Karachi	28.	50.8.	—
Jodhpur	35.	63.	—
Allahabad	45.	82.16.	—
Calcutta	53.	95.8.	—
Rangoon	67.	120.12.	—
Bangkok	87.	156.12.	—
Penang	96.	172.16.	—
Medan	100.	180.	—
Singapore	104.	187.04.	—
Palembang	113.	203.8.	—
Batavia	118.	212.8.	—
Bandoeng	119.	214.4.	—

CALCUTTA to:

	£	10s	6d
London	108.	194.8.	—
Amsterdam	108.	194.8.	—
Leipzig	103.	185.8.	—
Budapest	96.	172.16.	—
Athens	86.	151.4.	—
Rhodes	80.	144.	—
Alexandria	75.	138.12.	—
Lydia	69.	124.8.	—
Baghdad	48.	88.8.	—
Basra	53.	95.8.	—
Bangkok	58.	104.8.	—
Penang	64.	116.8.	—
Medan	66.	122.8.	—
Singapore	68.	126.8.	—
Palembang	75.	138.12.	—
Batavia	78.	144.8.	—
Bandoeng	79.	146.8.	—

BATAVIA to:

	Gld.	Gld.	Gld.
London	1590.	2840.	7.75
Amsterdam	1590.	2840.	7.75
Leipzig	1500.	2700.	7.45
Budapest	1620.	2916.	7.95
Athens	1185.	2133.	6.95
Rhodes	1160.	2088.	6.80
Alexandria	1115.	2007.	6.60
Lydia	1057.	1922.	6.30
Baghdad	975.	1750.	5.90
Basra	945.	1701.	5.80
Karachi	894.	1607.	4.90
Jodhpur	850.	1540.	4.60
Allahabad	970.	1746.	5.10
Calcutta	1050.	1890.	5.55
Rangoon	1250.	2250.	6.55
Bangkok	1440.	2592.	7.65
Penang	1560.	2808.	8.25
Medan	1620.	2916.	8.55
Singapore	1680.	3024.	8.85
Palembang	1770.	3195.	9.45
Batavia	1830.	3306.	9.95
Bandoeng	1860.	3366.	10.10

JODHPUR to:

	£	10s	6d
London	91.	163.16.	—
Amsterdam	91.	163.16.	—
Leipzig	86.	154.16.	—
Budapest	79.	142.4.	—
Athens	67.	120.12.	—
Rhodes	63.	113.8.	—
Alexandria	58.	104.8.	—
Lydia	52.	93.12.	—
Baghdad	40.	72.	—
Basra	35.	63.8.	—
Bangkok	30.	54.	—
Penang	30.	54.	—
Medan	30.	54.	—
Singapore	30.	54.	—
Palembang	35.	63.8.	—
Batavia	35.	63.8.	—
Bandoeng	35.	63.8.	—

F A R E S

KARACHI to:

	Single	Return	Exc. baggage and freight per Kilogr.
London	85	153	8. 6
Amsterdam	85	153	8. 6
Leipzig	80	144	8. 6
Budapest	73	131	7. 4
Athens	61	109.16	6. 2
Rhodes	57	102.12	5. 8
Alexandria	50	90	5. 0
Lydia	45	81	4. 6
Baghdad	33	59. 8	3. 6
Barra	29	50. 8	2. 9
Bangkok	37	102.12	5. 8
Penang	65	117	6. 5
Medan	69	124. 4	6. 11
Singapore	71	127.16	7. 1
Palembang	80	144	8. 6
Batavia	85	153	8. 6
Bandoeng	86	154	8. 6

LYDDA to:

	Single	Return	Exc. baggage and freight per Kilogr.
London	47	84.12	4. 8
Amsterdam	47	84.12	4. 8
Leipzig	42	75.12	4. 3
Budapest	35	63	3. 6
Athens	21	37.16	2. 2
Rhodes	17	30.12	1. 8
Alexandria	7	12.12	0. 9
Lydia	20	36	2. 6
Baghdad	25	45	2. 6
Barra	25	45	2. 6
Karachi	65	117	6. 5
Jodhpur	52	93.12	5. 3
Alahabad	62	111.12	6. 3
Calcutta	69	124. 4	6. 9
Rangoon	82	147.12	8. 3
Bangkok	102	183.12	10. 3
Penang	118	199.16	11. 2
Medan	115	207	11. 4
Singapore	118	212. 8	11. 9
Palembang	127	228.12	12. 9
Batavia	132	237.12	13. 2
Bandoeng	133	239. 8	13. 3

LEIPZIG to:

	R.M.	R.H.	R.M.
London	160	288	1.33
Amsterdam	100	180	1
Budapest	110	198	1.23
Athens	290	522	1.60
Rhodes	333	603	1.70
Alexandria	433	783	2.30
Lydia	550	990	2.73
Baghdad	760	1368	3.80
Barra	760	1368	3.80
Karachi	1005	1809	5
Jodhpur	1080	1944	5.40
Alahabad	1205	2169	6
Calcutta	1290	2322	6.45
Rangoon	1440	2592	7.20
Bangkok	1690	3022	8.45
Penang	1868	3382	9.33
Medan	1940	3492	9.70
Singapore	2025	3645	10.15
Palembang	2190	3789	10.50
Batavia	2190	3789	10.50
Bandoeng	2200	3960	11

MEDAN to:

	Gld.	Gld.	Gld.
London	1200	2160	7
Amsterdam	1200	2160	7
Leipzig	1160	2088	6.80
Budapest	1110	1998	6.50
Athens	1020	1836	6.10
Rhodes	990	1791	5.90
Alexandria	930	1674	5.70
Lydia	867	1556	5.45
Baghdad	802	1443	5
Barra	786	1413	4.90
Karachi	535	958	3.70
Jodhpur	492	888	3.30
Alahabad	446	797	3.10
Calcutta	370	666	2.90
Rangoon	270	486	2.20
Bangkok	131	236	1.70
Penang	46	83	0.59
Singapore	75	135	0.75
Palembang	120	216	1
Batavia	200	340	2
Bandoeng	209	353.23	2.18

LONDON to:

	£	£	£
Amsterdam	5.10	9.16	1. 1
Leipzig	15	27	2. 3
Budapest	25	45	3
Athens	35	57.12	4
Rhodes	36	64.16	5
Alexandria	40	72	4
Lydia	47	84.12	4. 8
Baghdad	45	111.12	6. 3
Barra	45	102.12	6. 3
Karachi	85	153	8. 6
Jodhpur	91	163.16	9. 2
Alahabad	101	181. 4	10. 2
Calcutta	108	194. 8	10. 9
Rangoon	120	216	12
Bangkok	140	252	14
Penang	150	270	15
Medan	154	277. 4	15. 5
Singapore	154	280.16	15. 7
Palembang	165	297	16. 6
Batavia	170	306	17
Bandoeng	171	307	17. 1

PALEMBANG to:

	Gld.	Gld.	Gld.
London	1300	2340	7.50
Amsterdam	1300	2340	7.50
Leipzig	1260	2268	7.30
Budapest	1210	2178	7
Athens	1130	2034	6.75
Rhodes	1110	1998	6.50
Alexandria	1030	1863	6.20
Lydia	980	1764	5.90
Baghdad	915	1647	5.50
Barra	871	1568	5.30
Karachi	620	1138	3.60
Jodhpur	594	1069	3.90
Alahabad	519	931	3.60
Calcutta	470	846	3.35
Rangoon	370	666	2.90
Bangkok	254	457	2.30
Penang	154	277	1.80
Medan	132	224	1.35
Singapore	60	102	0.60
Batavia	68	116	0.70
Bandoeng	77	137.25	0.80

F A R E S

PENANG to:

	Single	Return	Exc. baggage and freight per Kilogr.
London	150	270	15
Amsterdam	150	270	15
Leipzig	145	261	14. 6
Budapest	138	248. 8	13.10
Athens	126	226.16	12. 7
Rhodes	122	219.12	12. 3
Alexandria	116	208.16	11. 7
Lydia	111	199.16	11. 2
Baghdad	100	180	10
Barra	96	172.16	9. 7
Karachi	65	117	6. 6
Jodhpur	60	108	6
Alahabad	60	90	6
Calcutta	44	79. 4	4. 5
Rangoon	31	53.16	3. 1
Bangkok	13	23. 8	1. 4
Medan	6	10.16	0. 7
Singapore	9	16. 4	1. 1
Palembang	18	32. 8	1. 9
Batavia	23	41. 8	2. 3
Bandoeng	24	43. 4	2. 4

RHODES to:

	Single	Return	Exc. baggage and freight per Kilogr.
London	36	64.16	4. 8
Amsterdam	36	64.16	4. 8
Leipzig	29	52. 4	3. 6
Budapest	25	45	3
Athens	8	14. 8	1. 1
Rhodes	10	18	1. 1
Alexandria	10	18	1. 1
Lydia	17	30.12	1. 8
Barra	34	61. 4	3. 5
Baghdad	41	73.16	4. 2
Karachi	37	67.16	4. 2
Jodhpur	41	73.16	4. 2
Alahabad	37	67.16	4. 2
Calcutta	73	131. 8	7. 4
Rangoon	85	144	8. 6
Bangkok	93	167. 8	9. 4
Penang	115	203. 8	11. 4
Medan	122	219.12	12. 2
Singapore	129	232. 4	12. 11
Palembang	136	248. 8	13. 2
Batavia	143	257. 8	13. 3
Bandoeng	144	259. 8	13. 4

RANGOON to:

	£	£	£
London	120	216	12
Amsterdam	120	216	12
Leipzig	115	207	11. 6
Budapest	108	194. 8	10. 9
Athens	97	174.12	9. 8
Rhodes	83	167. 8	9. 4
Alexandria	87	156.12	8. 8
Lydia	82	147.12	8. 3
Baghdad	72	129.12	7. 3
Barra	67	120.12	6. 8
Karachi	20	36	2
Jodhpur	31	53.16	3. 1
Medan	33	63	3. 6
Singapore	37	66.12	3. 8
Palembang	46	82.16	4. 7
Batavia	51	91.16	5. 1
Bandoeng	52	93.12	5. 2

SINGAPORE to:

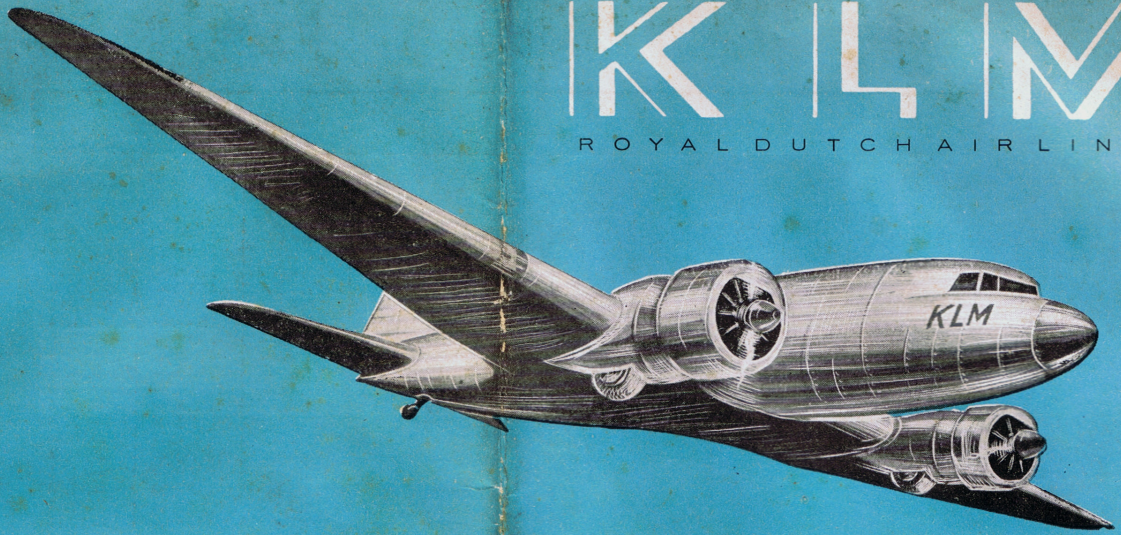
	£	£	£
London	156	280.16	15. 7
Amsterdam	156	280.16	15. 7
Leipzig	151	271.16	15. 2
Budapest	144	259. 4	14. 8
Athens	133	239. 8	13. 4
Rhodes	129	232. 4	12. 11
Alexandria	123	221. 8	12. 4
Lydia	118	212. 8	11. 9
Baghdad	107	192.12	10. 6
Barra	104	187. 4	10. 5
Karachi	71	127.16	7. 1
Jodhpur	66	118.16	6. 7
Alahabad	56	102.16	5. 9
Calcutta	50	90	5
Rangoon	37	66.12	3. 8
Bangkok	22	39.12	2. 2
Penang	9	16. 4	1. 1
Medan	8	15	1
Palembang	70	119	0.85
Batavia	120	204	1.30

How to see the most of Europe in a short time

- * by K.L.M. Royal Dutch Air Lines and co-operating companies.
- * England's greatest air-artery to the Continent.
- * Bringing 10 countries, 80 cities, within 8 hours of London.
- * Giving direct connections to the whole of Europe.
- * Carrying you, your family and your baggage with the maximum of speed, comfort, and security, wherever the spirit moves you.

K L M

ROYAL DUTCH AIRLINES



K L M

Printed in the Netherlands by J. van Boekhoven Utrecht

AMSTERDAM—BATAVIA SUMMER SERVICE

VALID FROM APRIL 7th to OCTOBER 2nd 1937

Subject to alteration.

All previous editions cancelled.