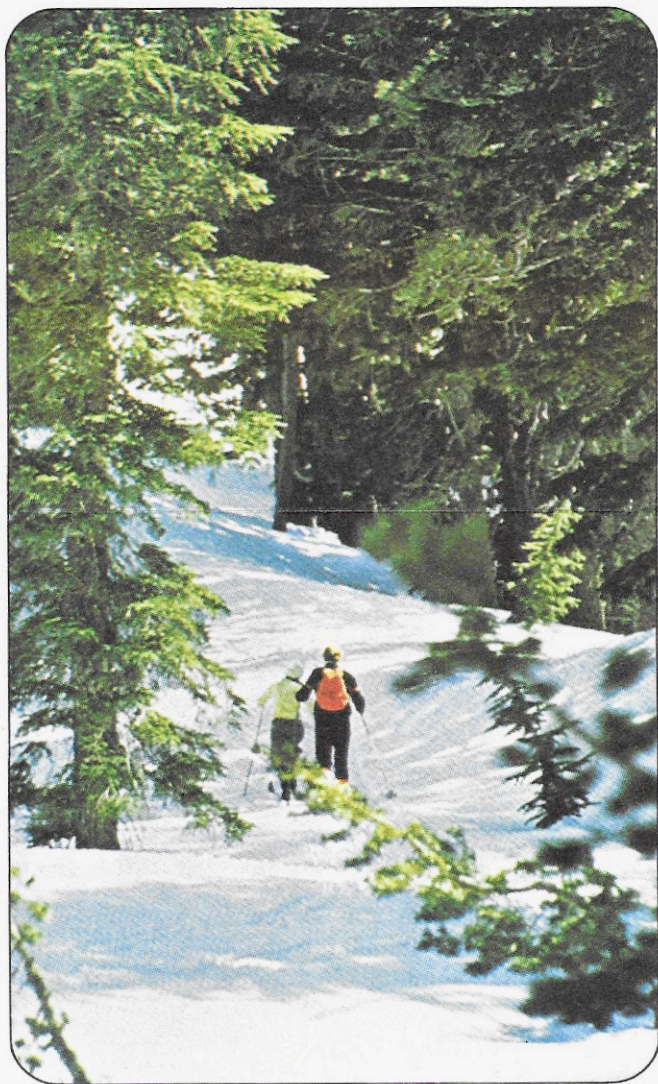


gate/



**TICKET**

# **NORTH CENTRAL**



# NORTH CENTRAL AIRLINES RESERVATION OFFICES AND TELEPHONES

## NOTICE — OVERBOOKING OF FLIGHTS

Airline flights may be overbooked, and there is a slight chance that a seat will not be available on a flight for which a person has a confirmed reservation. If the flight is overbooked, no one will be denied a seat until airline personnel first ask for volunteers willing to give up their reservation in exchange for a payment of the airline's choosing. If there are not enough volunteers the airline will deny boarding to other persons in accordance with its particular boarding priority. With few exceptions, persons denied boarding involuntarily are entitled to compensation. The complete rules for the payment of compensation and each airline's boarding priorities are available at all airport ticket counters and boarding locations.

## HAZARDOUS MATERIALS

Federal regulations restrict carriage on aircraft of items classified as hazardous materials. These materials include but are not limited to flammable gases, liquids and solids; non-flammable compressed gas; explosives; poisons; corrosives; oxidizing materials; radioactive materials; etiologic agents and magnetic materials. These materials and others may not be included in carry-on baggage. Violators are subject to substantial fines. Further information is available upon request.

## For better service . . .

- Make your reservation as far in advance as possible.
- Please check in at the ticket counter at least 20 minutes before flight time. Reservations are subject to cancellation unless you present yourself at the ticket lifting point at least 10 minutes prior to scheduled departure time.
- Please re-confirm reservations at the city where you will board at least 6 hours prior to scheduled departure, after a stopover of twelve hours or more.
- Give airline personnel at the station you expect to board a phone number where you can be reached.
- Please cancel your reservation promptly if your plans change or it is evident you will be too late for the flight.
- Reserve your Rental Car in advance.

## Carry-on Baggage Regulations

- FAA regulations require that all articles carried on board commercial aircraft will be searched. We recommend that you check all baggage that will not be needed in flight.
- Carry-on articles such as briefcases, hat boxes, musical instruments, etc., must be limited in size so they can be placed under the seat. Items not meeting this size limitaiton must be checked as baggage.

89-7531  
82-8001  
57-9541  
23-5640  
23-2521  
22-6872  
15-2511  
13-6677  
15-7831  
18-2230  
9-5381  
3-6677  
5-5381  
3-8320  
3-7100  
2-2118  
1-8283  
1-3234  
1641  
5381  
1851  
1600  
1400  
720  
484  
484  
501  
846  
544  
316  
045  
381  
456  
100  
979  
303  
161  
210  
141  
166  
161  
123  
34  
33  
92  
55  
00  
61  
84  
30  
22  
09  
78

# NEW

# ONE OF THE SMALLEST INSTANT LOAD CAMERAS IN THE WORLD

UNDER \$20.00

XL-400 \$19.95

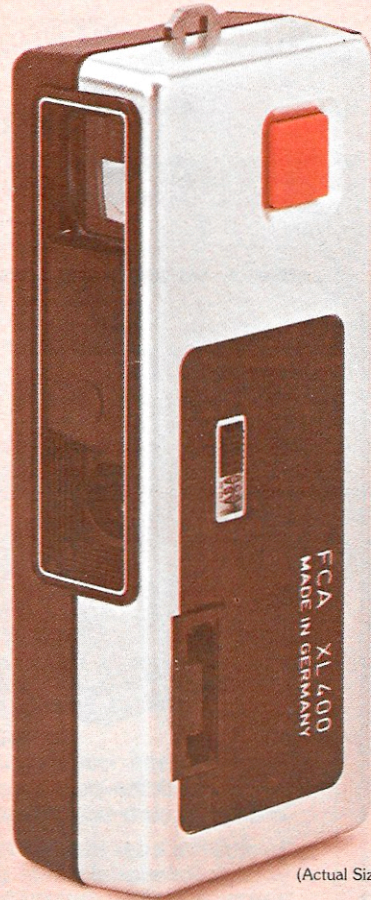
Accepts the new  
super fast Kodak  
ASA 400 or ASA  
100 film in 12 or  
20 exposures.

Made in West Germany by  
one of the world's most  
noted precision camera  
manufacturers. One-year  
warranty. Weighs only 3  
ounces.

Viewfinder — optical type  
eye level. Lens — fine  
quality optical lens. f9.5  
aperture, 30mm focal  
length, fixed focus 5 ft. to  
infinity. Shutter has 2  
speeds — 1/60 and 1/200  
of a second. Uses new ad-  
vanced flipflash, no bat-  
teries needed.

We'll rush your XL-400  
Instant Load, Pocket  
Camera, Wrist Strap, a  
Fresh Roll of 110-20 exp.  
Color Print Film and Flip-  
flash.

Fill in information below.



(Actual Size)

Enclosed is my payment of \$19.95 plus \$1.75 postage and handling (total \$21.70). Please add sales tax where applicable or bill my credit card as shown below.

Credit card name \_\_\_\_\_  
(Visa or Mastercharge)

Cardholder's signature \_\_\_\_\_  
Expiration Date \_\_\_\_\_ Master Charge  
Check Enclosed \_\_\_\_\_ Card Number \_\_\_\_\_ / \_\_\_\_\_ / \_\_\_\_\_

Send to: North Central Airlines XL-400 Camera Offer  
Foto Post Film Labs  
P.O. Box 7620, Dept. CM5  
Philadelphia, PA 19101

Please print.  
Name \_\_\_\_\_

Address \_\_\_\_\_

City \_\_\_\_\_ State \_\_\_\_\_ Zip \_\_\_\_\_

This offer expires April 1979.



# DOLLAR

## RENT-A-CAR SYSTEMS<sup>®</sup>

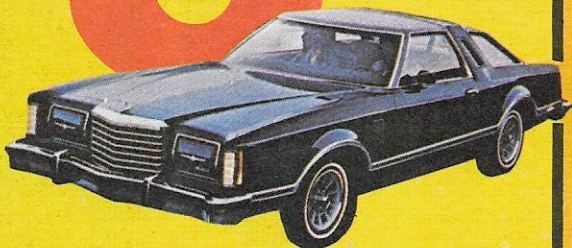
and your travel consultant offer

### NORTH CENTRAL AIRLINES

## Passengers A SPECIAL DISCOUNT

**\$5**

Discount on your rental of a Thunderbird, LTD, Granada or similar car. Discount applicable on time and mileage or flat rates.



When you land, look for Dollar in the terminal, or check the local directory and call for immediate curbside pick-up.

To reserve a car in advance, call your professional travel consultant, NORTH CENTRAL AIRLINES or Dollar Toll-Free:

# 800-421-6868

(In California: 1-800-262-1520)

Present this ticket jacket at time of rental. Discount available at participating Dollar locations. One discount per rental. Not valid on tour packages, special promotional rates or in conjunction with any other discount. Car must be returned to renting location.

**DOLLAR**  
RENT-A-CAR SYSTEMS<sup>®</sup>

