

"OVERLAND" . . . TO THE

ORIENT

The Scenic Route



NORTHWEST
Orient
AIRLINES

NORTHWEST ORIENT AIRLINES *coast to coast... Alaska... The Orient*



the SCENIC route . . . The Northwest Airlines route to the Orient follows the famed "Northwest Passage", sought after for centuries as the short-cut to the Far East. Not only is this route shorter, and faster, but it is virtually an "Overland" route, dotted by frequent airports, and with land never more than an hour away.

Imagine an air trip of less than 50 hours flying time, from New York to Manila, with an ever-passing panorama of scenic beauty all the way. See the mighty mountain peaks and glaciers of Alaska, the volcanoes of the Aleutians, the rice-paddies and fishing boats of Japan from the air,

as well as famed Fujiyama, the "Sacred Mountain" of the Japanese. Fly over the "Inland Sea", Hiroshima, the China Sea and the Yellow Sea.

In China the scenic wonders of the Orient unfold, flying over the "good earth" of this vast country, with enchantment for the sightseer in its great cities. Then across the South China Sea, to Formosa and the Philippines. See Bataan, Corregidor and Manila Bay from the air, and then the tropical splendor of Manila and the Philippines on the ground.

No wonder the Northwest Passage has been called "The World's Most Scenic Air Route". No other route has so much to offer.

Alaska

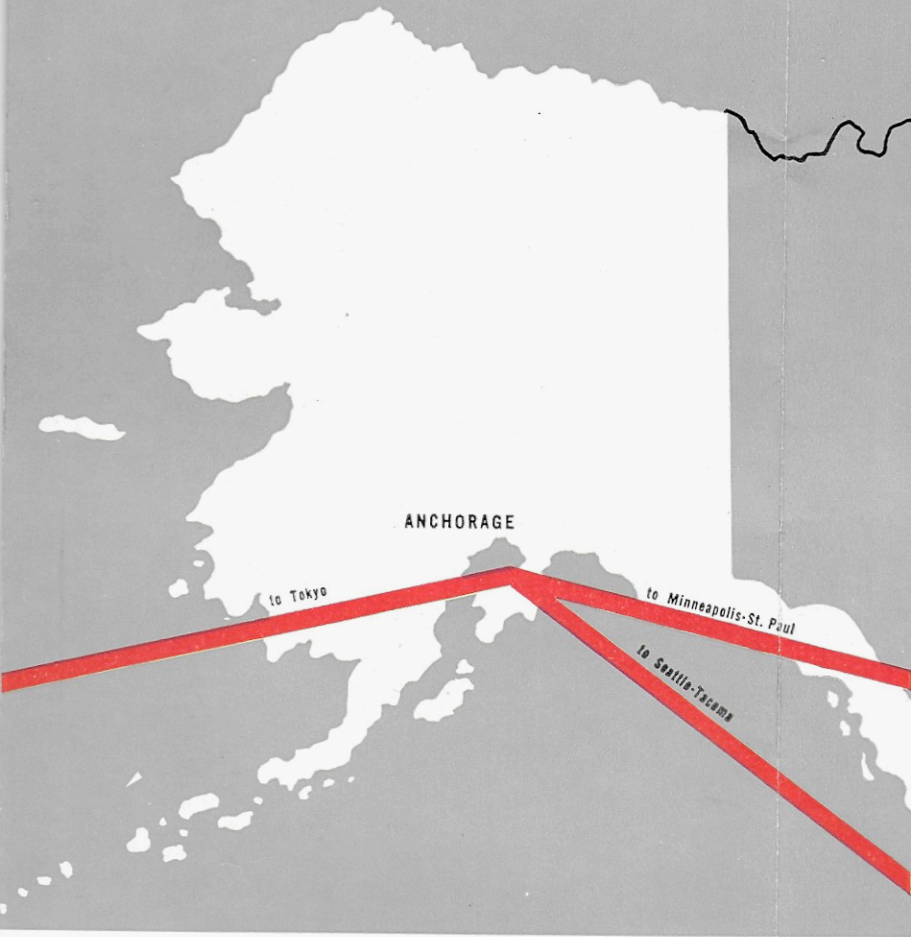
Anchorage, the "hub" of Alaska, is only 7½ hours flying time non-stop from Seattle, 14 hours from the Twin Cities, and less than 20 hours from New York via Northwest Airlines, the only direct service from these great cities of the U. S. to Alaska's largest city.

Anchorage has a population of approximately 15,000, and is the center of Alaska's industrial, transportation, and recreation activities, just a few hours by air from Fairbanks, the "Great Heart" of Alaska. Arrivals and departures are at Elmendorf field, just a few minutes from the center of Anchorage.

The Alaska railroad connects Anchorage with Palmer in the rich Matanuska valley, Mt. McKinley National Park, Fairbanks, Seward and Whittier. Excellent bus service radiates from Anchorage as well.

World-famous hunting and fishing areas surround Anchorage, easily reached by air or highway. A great scenic vacation paradise awaits the Alaska air tourist, unmatched for beauty anywhere else in the world.

Hotel accommodations are excellent; let Northwest Airlines help you plan your trip and make reservations well in advance.



Anchorage has a mild climate the year around, tempered by the warm Japanese current. Long summer days are stretched out by the "midnight sun". Light clothing is worn in the summer months.



Big game hunting starts in April with the spring bear season, and usually the last season closes in late December. Fishing and small game hunting in Alaska are tops. Outdoor clothing of medium or heavy weight should be brought by the sportsmen. Guide services and outfitters will furnish most of the needed equipment and heavy clothing.

Anchorage is the winter sports capital of Alaska, with its famous "Ski Bowl", and skating rinks open to the public, and dog races and fur festivals furnishing additional fun.

Clothing for business wear should be the same as for similar seasons in U. S. cities of the central states.



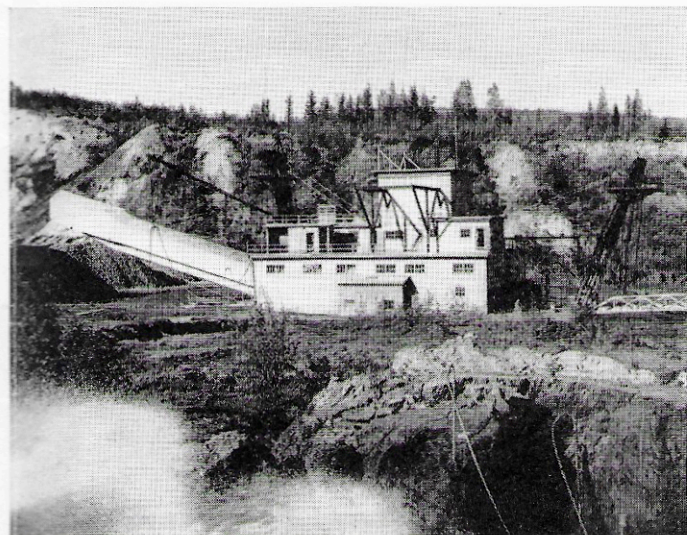
Fourth Avenue, the Main Street of Anchorage



Russian River and Russian Lake on the Beautiful Kenai Peninsula of Alaska



Russian Lake Lodge in the Kenai



Gold Dredge near Fairbanks, Alaska

Japan

Japan is a densely populated, mountainous country comprising four main islands, and having a population of approximately 75,000,000.

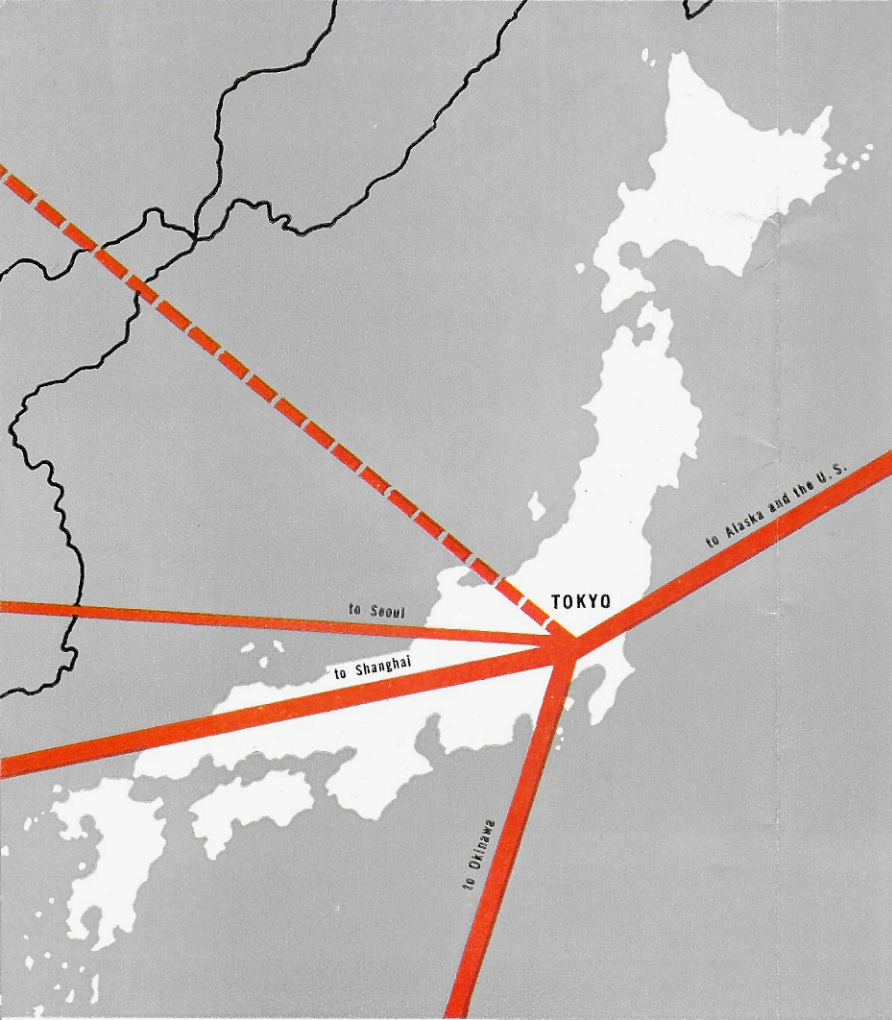
Tokyo, the capital city and Japan's largest city, is located on the main island of Honshu, with New York only 35 hours away via Northwest Airlines direct service to this and other leading U. S. cities.

Twelve national parks are readily accessible from Tokyo, as well as many resorts, shrines, hot springs, tourist centers and areas of scenic interest.

Fast, dependable rail service connects Tokyo with such cities as Yokohama, Kamakura, Atami and other spas of the IZU Peninsula, Nikko, Nagoya, Kyoto, Nara, Osaka, Kobe, Shimonoseki, Hiroshima, Beppu and others.

Manufacturing, native arts and crafts, festivals and colorful celebrations and souvenir shopping facilities are being resumed in Japan, making this an interesting and unusual country to visit.

Owing to changing conditions in Japan, it is advisable to check with your nearest Northwest Airlines representative for latest information on available facilities, accommodations and regulations for Japan travel.



Japan's average temperature in August, the hottest month, is 82 degrees F., and in January, the coldest, is 35 degrees F. The year 'round climate is much milder than is generally supposed; light to medium weight clothing should be worn, depending on the time of year.



Each of the four seasons has its special attractions in Japan. Spring begins with the blossoming of the plum trees in February, followed in April by cherry blossom time and in May by azaleas, wistarias and other beautiful flowers.

Japan in summer is covered with a carpet of luxuriant green. Sea bathing, spas, and cool mountain resorts are most popular at this time. Autumn in Japan is world famous for blue skies, and its gorgeous displays of brilliantly colored foliage.

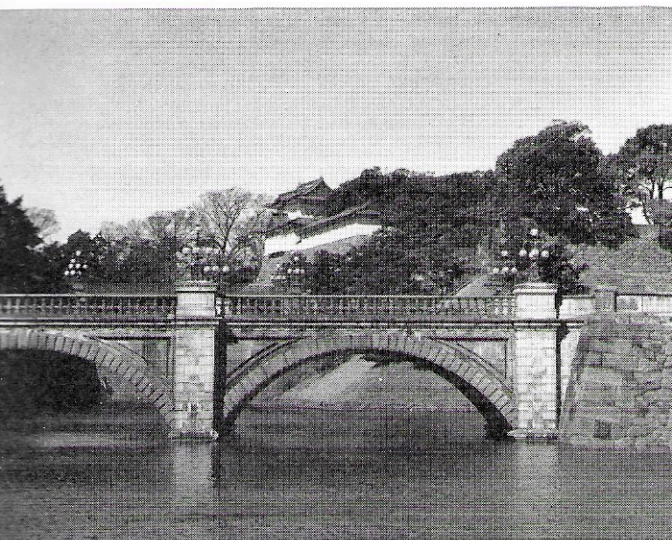
Winter in northern and upland districts is fairly cold, providing winter sports in the mountain resort areas. Winter also brings the colorful New Year celebration and other festivals.



Mount Fujiyama, "Sacred Mountain" of Japan



Entrance to One of the Many Picturesque Shrines in Tokyo



Double Bridge at Imperial Palace Gate



Ginza Street, Tokyo Shopping Center

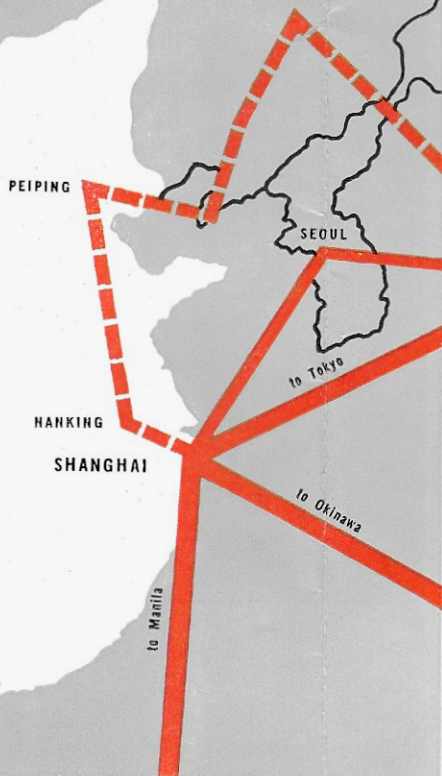
China

Northwest Airlines direct service to Shanghai, brings China within hours of New York and other great cities of the central and eastern U. S. via fast, direct flights. Shanghai is the largest city in China, a vivid, bustling metropolis which contrasts ultra-modern hotels and office buildings of its Bund, with the brilliantly lacquered store fronts of its Chinese City section.

Travellers to China today will find excitement, glamor and amazing contrasts in this country that is both ancient and modern at the same time. Shops, night clubs, theatres, hotels offer plenty to do in China's cities: sightseeing trips through the country and to ancient shrines, temples and palaces offer endless interest to the traveller.

From Shanghai, one day trips are easily arranged to Hangchow, Nanking and other nearby cities. Peiping is two and one half hours away by air, and direct connections offer good service to Hongkong and other cities.

Northwest Airlines offices in China are ready to help the traveller arrange side trips and other accommodations. The U. S. offices of Northwest Airlines will give you information to help plan your air trip to China with a time-saving, profitable, and interesting itinerary.



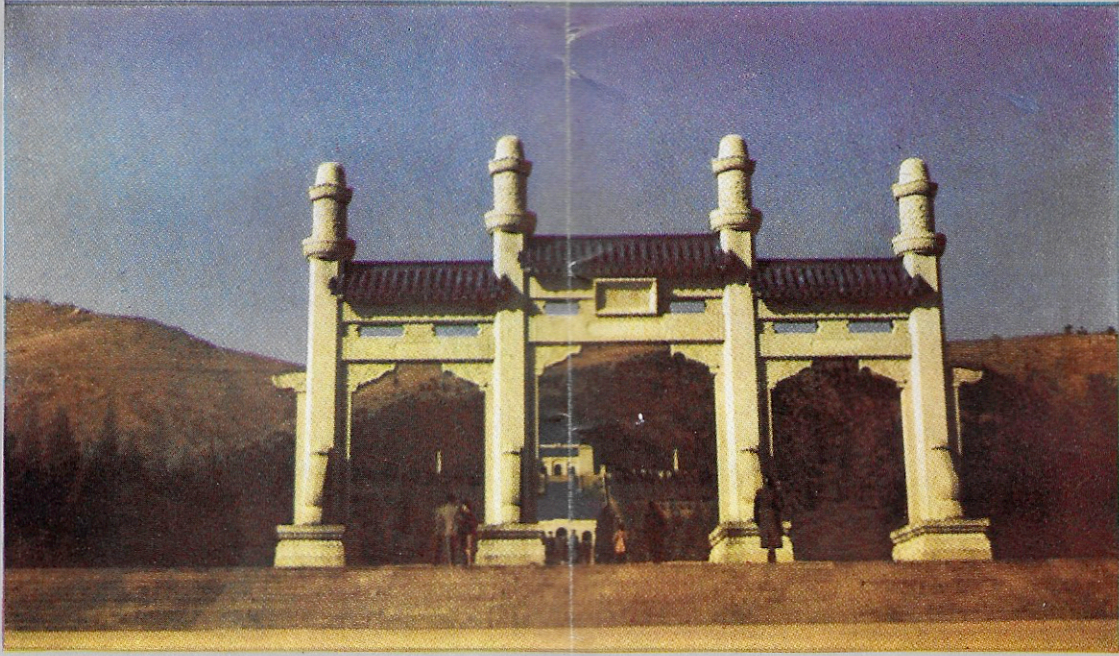
China's climate varies greatly from the hills surrounding Peiping to the south China semi-tropical climate. Shanghai's temperature averages 70 to 80 degrees F. in summer and 38 to 40 degrees in winter.

Tropical clothing should be carried in summer months, with medium weight clothes if the interior is to be visited. Heavy clothing is required in fall and winter for north China, and for the Shanghai area in December and January, although most winter weather in Shanghai is fairly mild.

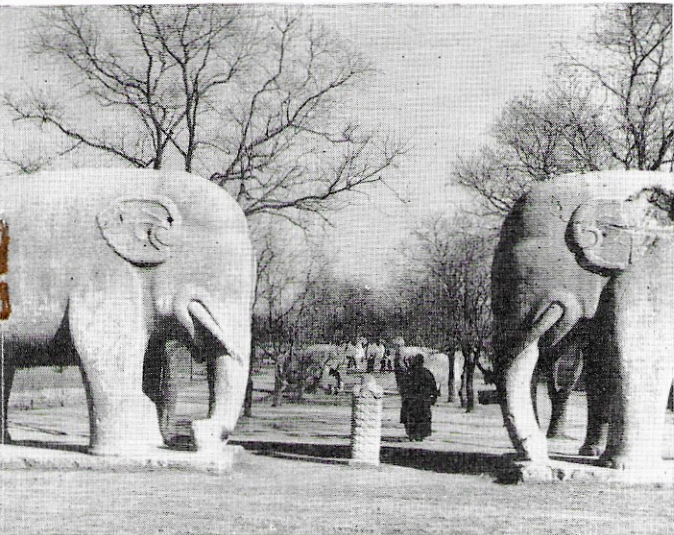
Spring is an ideal time to visit China, and the long autumns offer clear days of ideal weather for sightseeing tours of northern cities and temples and palaces.



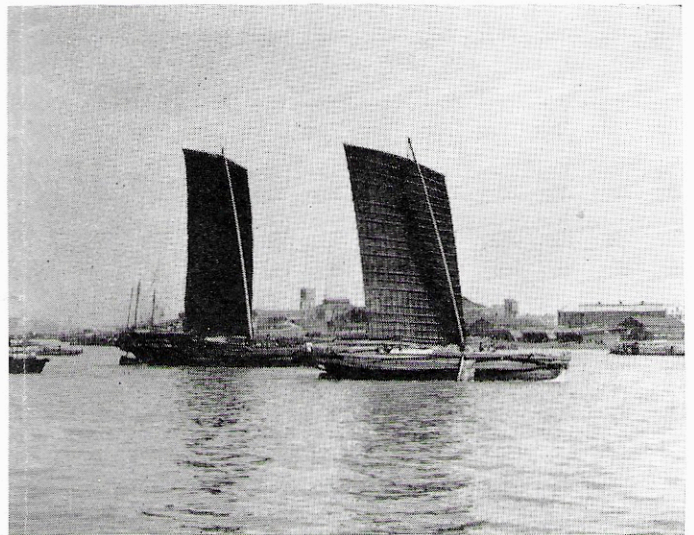
Street Scene in Chinese City, Shanghai



Sun Yat Sen Memorial Park, near Nanking, China



Ming Tomb Carvings near Nanking



Chinese Junks on the Whangpoo, Shanghai

Philippines

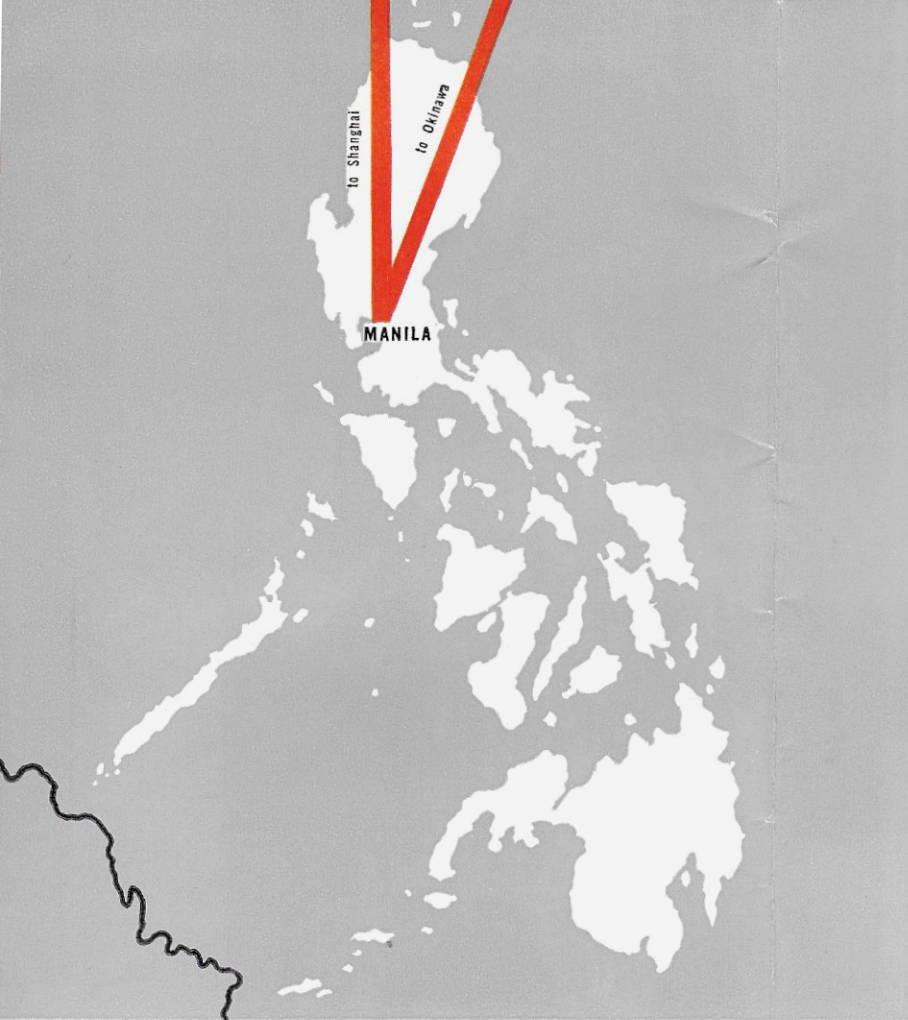
Less than 50 hours flying time from New York, via the Northwest Passage, is Manila, largest and most important city of the 7,000 islands that comprise the Republic of the Philippines.

From the Intramuros, old walled Spanish City founded in 1571, and now in ruins, to the modern shops and stores of the Escolta and the nipa houses of the suburbs, Manila is full of historical interest, native color and mementos of World War II.

Crowded market places, wide boulevards and narrow Spanish streets, carromatas and their new counterpart, the "jeepney" form a panorama of interest and beauty. Visit cigar factories, hemp mills and cocoon groves for an insight into the native industries and crafts of the Filipino people.

Nearby excursions into the countryside are easily arranged. Pagsanjan gorge offers a thrilling trip through the rapids in native "banca" dugout canoes, easily covered in one day.

Lake Taal is a beauty spot only 60 miles from Manila to the top of spectacular Tagaytay Ridge. 175 miles north is Baguio, the summer capital of the Philippines, 5000 feet above sea level, and offering unlimited sightseeing and recreational facilities, for a day or for a week.



The sub-tropical climate of the Philippines calls for white summer clothing the year around. Northern Luzon and Baguio in the mountains require heavier clothing for cool evenings.

Winter and spring are ideal vacation times in the Philippines, bringing your Far East tour within a few hours of the great northern and eastern cities of the U. S.

Golf, tennis, swimming, dancing, island cruises and other spectator sports are available the year around, and suitable clothing for these activities should be carried.

Men's washable suits and women's light weight clothing are readily available in the shops of Manila, as are hundreds of native crafts items, linens, carvings and other souvenirs.



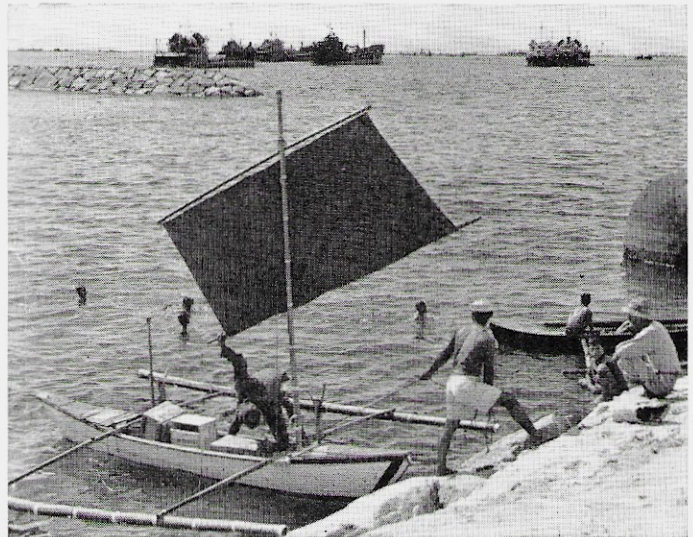
The Manila Hotel, Restored to Pre-war Elegance



Filipino Family, Nipa House Home, and Flower Garden near Manila



Filipino, Carabao and Cart



Along the Manila Bay Waterfront

Information for Orient Travelers

Northwest Airlines offers the shortest, fastest service direct from New York, Chicago, Washington, Seattle and other great cities of the U. S. to the Orient . . . Japan, Korea, China, Okinawa, the Philippines.

Each Northwest Airlines office is ready with all the information you will need to make your trip both pleasant and profitable, whether you are going on business, or "just touring".

Passports and visas are required, and time should be allowed for the preparation of necessary applications, etc. Northwest Airlines—or your Travel Agent—will be glad to furnish necessary information.



Reservations of your space

Through space for your entire trip can be reserved before you leave. Fast frequent trips, with Northwest service all the way, make it easy to change plans enroute. Wherever possible, reservations should be made well in advance.

Information on travel documents

Northwest Airlines will help you with the preparation of necessary travel documents before and after departure. Customs and Immigration forms are furnished by the purser of each flight before arrival at foreign stations. Your NWA representative will be glad to show you what forms are necessary before leaving, and enroute, and help in their preparation.

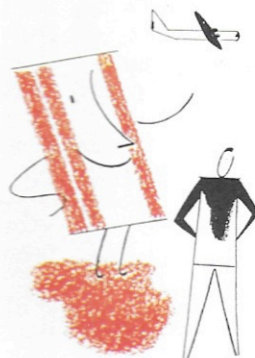


Hotel reservations ...glad to help

You can depart with assurance that accommodations enroute are waiting when you make your reservations well in advance. Northwest Airlines, or your Travel Agent, will be glad to assist in the clearing of hotel and resort reservations along the way, as well as reservations for side trips or continuing space.



The Boeing Stratocruiser



The great luxury liners that carry you on your Orient trip today are forerunners of the giant 80 passenger Stratocruisers which will be first on Northwest routes in the United States and later on Orient flights this year.

Today, Northwest provides the finest in equipment, over routes that are as well equipped as any in the world. Tomorrow, the giant super-luxury liners . . . the Northwest Airlines Boeing Stratocruisers, will carry you with speed, comfort and luxury undreamed of today.

Currency suggestions



It is recommended that everything over \$100 be carried in Traveller's Checks, or larger sums in bank letters of credit. Northwest Airlines representatives will be glad to help with currency exchange problems enroute, and to advise the amount to be carried for trips into various countries in the Orient.

Meal service



Your meals are complimentary on your flight to the Orient via Northwest Airlines. Delicious hot meals, prepared by the air steward, are preceded by cocktails, if you wish.

Hot coffee, hot chocolate, fruit juices, and other snacks are available at all times in flight. Every effort is made to make your trip thoroughly enjoyable and comfortable.

Fast frozen meals give you variety and quality no matter where you may be.

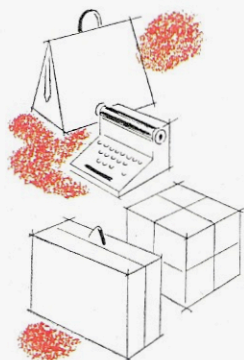
Typical Flying Time from Orient Cities

BETWEEN	New York	Chicago	Minneapolis-St. Paul	Seattle-Tacoma	*San Francisco	Tokyo	Shanghai	Manila
TOKYO	35 hrs.	31 hrs. 45 min.	30 hrs. 5 min.	25 hrs. 25 min.	28 hrs. 25 min.		5 hrs. 50 min.	11 hrs. 55 min.
SHANGHAI	40 hrs. 35 min.	37 hrs. 20 min.	35 hrs. 40 min.	31 hrs.	34 hrs.	5 hrs. 35 min.		6 hrs. 5 min.
OKINAWA	43 hrs. 15 min.	40 hrs.	38 hrs. 20 min.	33 hrs. 40 min.	36 hrs. 40 min.	8 hrs. 15 min.	2 hrs. 40 min.	4 hrs. 50 min.
MANILA	46 hrs. 35 min.	43 hrs. 20 min.	41 hrs. 40 min.	37 hrs.	40 hrs.	11 hrs. 35 min.	6 hrs.	

SEOUL, KOREA—ADD 5 HRS. 50 MIN. TO TOKYO TIME.

*Via connection at Seattle

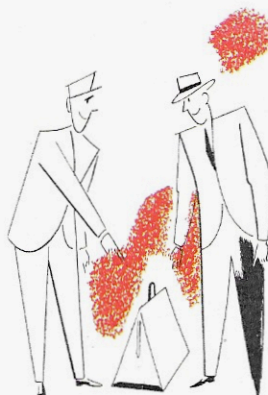
Baggage allowances



Each Orient traveller is allowed 66 pounds of free luggage, plus cameras, handbags, books or small packages that are carried on the person. It is suggested that a small kit of toilet articles, shaving needs, etc. be carried into the cabin, as baggage is not always accessible enroute.

Large trunks or cases may be sent via steamer in advance as unaccompanied baggage at very low rates, and will await you upon your arrival at Orient destination, if you have needs in excess of the 66 pound air allowance.

Customs duties



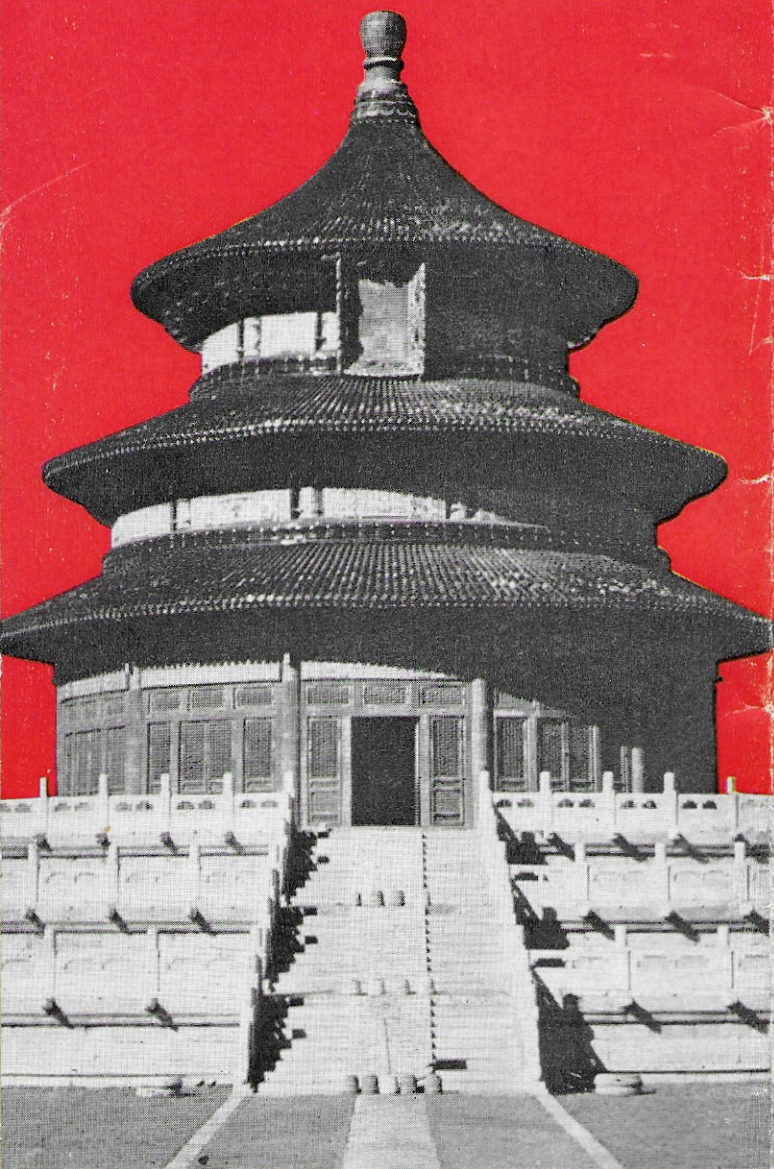
Your luggage will be subject to customs inspection at port of arrival in the Orient. The necessary declaration forms can be filled out in advance, and ordinarily customs clearance is completed rapidly and without delay.

Returning to the U. S. an entry customs declaration must again be filled out and all goods declared according to instructions you will be given aboard the airplane. A liberal amount of merchandise may be brought in duty-free, other items carry duty which must be paid at the port of entry. Complete details are available from your Northwest Airlines representative.

"OVERLAND" . . . TO THE

ORIENT

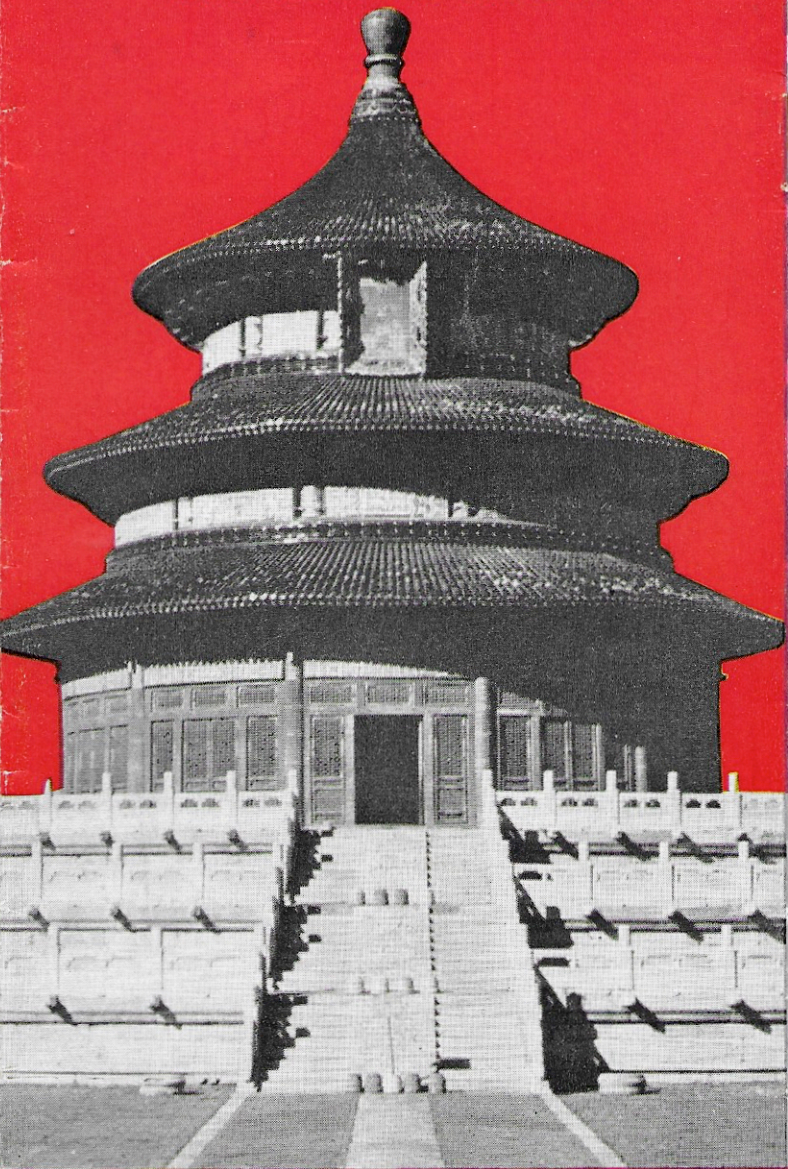
The Scenic Route



"OVERLAND" . . . TO THE

ORIENT

The Scenic Route



NORTHWEST
Orient
AIRLINES

NORTHWEST
Orient
AIRLINES