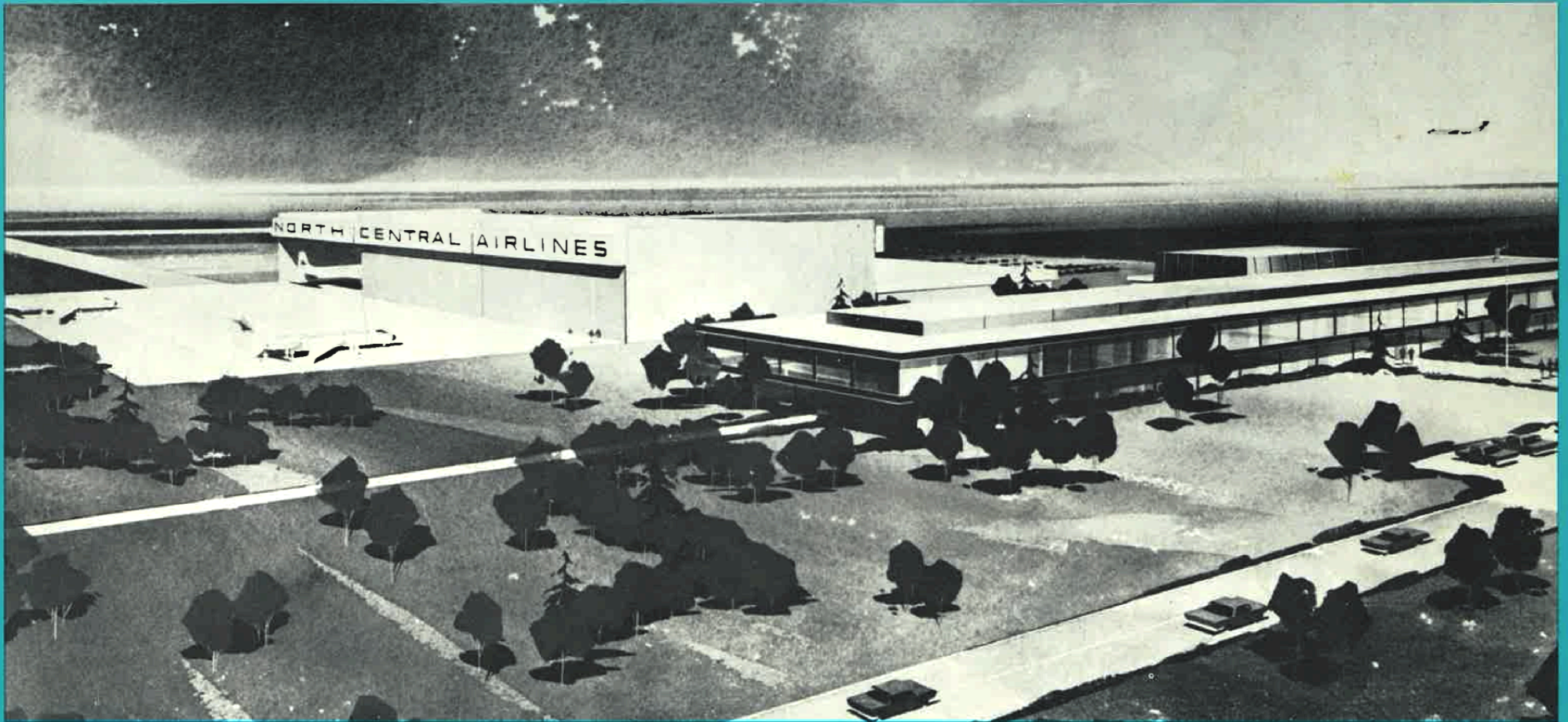


a prominent twin cities landmark . . .

north central airlines

general office and main operations base



# welcome to north central's headquarters

It is a pleasure to welcome you to the North Central Airlines General Office and Main Operations Base at Minneapolis-St. Paul International Airport.

This \$15-million facility was dedicated in October 1969. It combines the company's major corporate and operational functions into one massive complex located on a landscaped, 100-acre site adjacent to the airport.

The buildings are designed to provide the finest maintenance and service equipment in some of the most modern and functional surroundings in the airline industry. Of our 3,100 employees, over 1,200 are based here.

The facility is also a commitment to the future growth of the airline and the communities it serves. We are proud of North Central's headquarters — a landmark of the Twin Cities.



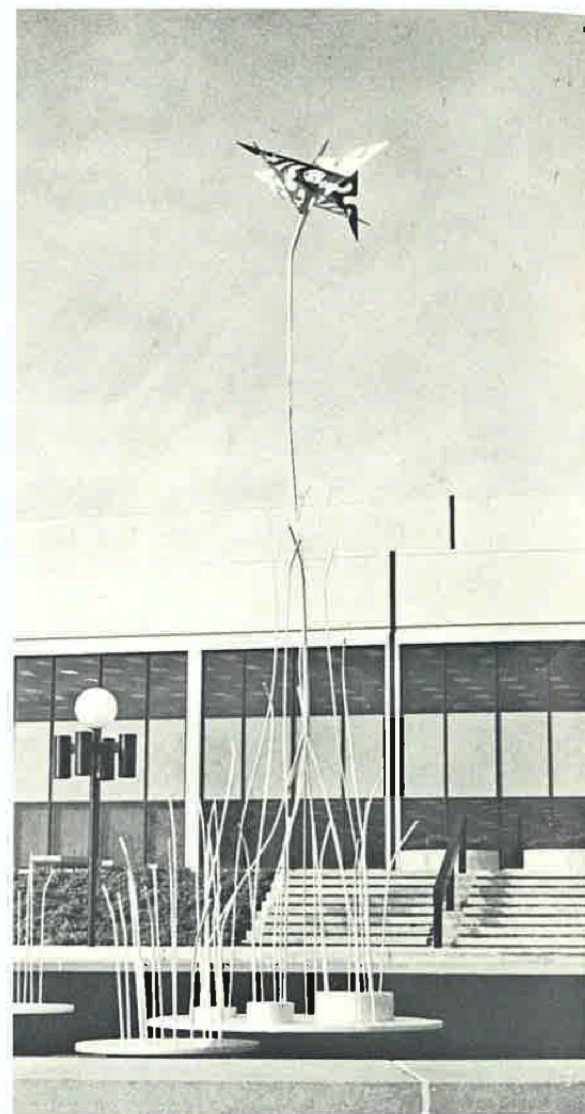
Hal N. Carr  
Chairman of the Board



The main entry to North Central's General Office building features a courtyard area, with granite steps and park benches. The area is beautifully landscaped with trees, grass and shrubbery, and illuminated by contemporary boulevard lights.

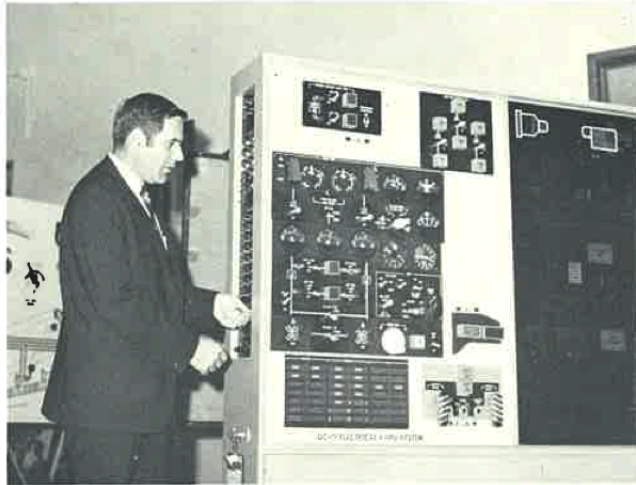


The complete garden effect is carried into the building reception area, the decor of which features a slate floor, teak paneling and an open staircase leading to the second level. An abstract metal art mural presented to the airline by Douglas Aircraft Company portrays the Twin Cities headquarters of North Central and the jet transportation it provides.



The theme fountain and pool at the main entrance completes the courtyard appearance and adds to the overall beauty of the landscaping. A stylized version of "Herman", North Central's corporate insignia, graces the center of the pool. Executed in aluminum alloys typical of aircraft materials, it portrays a shining bird of the future flying above the native grasses of Minnesota's lake country.

# beautiful, spacious offices are characteristic of the airline's facilities



Most training facilities for the airline are centralized in the General Office building. Included are five large training classrooms and some of the finest equipment in the airline industry, with such items as a jet engine cutaway, and aircraft cabin and cockpit mockups. Increased office areas are available for manual production and the development of training programs. Shown above is a training panel of the DC-9 electrical and APU (auxiliary power unit) system. Flight, ground, and maintenance personnel receive specialized training at the company's Twin Cities headquarters.



Physical refinements, such as a noise control system to keep sound levels at a minimum and an expanded working area, have been integrated into North Central's Flight Control section (photo above). With the introduction of ESCORT, Flight Control will have high-speed, electronic communication directly with all station personnel and receive operational data about each flight.



Spacious and light offices with pleasant decor (photo right) exemplify the attractiveness of the entire headquarters complex. In addition to the office facilities, North Central's home has many employee lounge areas, where personnel may gather for refreshments during work breaks.



The central site equipment for the company's \$8-million IBM reservations and communications system, "ESCORT", is housed in the Computer Services section at the General Office. The computers can be viewed from the main lobby, (top photo). (Bottom photo) In a large, sound-proofed area near Computer Services is the Minneapolis/St. Paul Reservations Center and the airline's System Reservations Control section. ESCORT provides a separate visual display unit for each reservationist which permits instantaneous entry and retrieval of all information.



A regional airline "first" is North Central's Flight Kitchen (photo above). Inflight fare for meal service flights is prepared here by experienced personnel who specialize in fine airline food. By using its own kitchen, North Central is able to exercise better quality control in catering its flights and do so more economically. The facility has some of the newest and most efficient food preparation equipment available and over 1,700 meals can be prepared daily in the company's new Flight Kitchen. In addition, the building houses an employee cafeteria (photo below), where a full variety of foods is served throughout the day. With its colorful furnishings and picture windows, the cafeteria is an attractive area and can accommodate 300 diners. Outside, the landscaped courtyard features patio tables.



## six-story hangar, flight kitchen, "robot", bus serve north central



The huge hangar area, more than six stories high, is capable of housing nine Douglas DC-9 fan jet aircraft at one time or 15 Convair 580 prop planes, the total area includes 120,000 square feet. A visitor who begins at one end of the hangar will have walked the length of 2-1/2 football fields! The corporate sign on the outside of the building is the largest of its type in Minnesota. The letters of "North Central Airlines" are ten feet high, including the company insignia. In construction of the sign, over seven tons of steel, 3,090 feet of neon tubing, 68 transformers and 35 gallons of paint were used. At night, the giant letters are illuminated and the company's name can be seen for miles, particularly since the building faces Interstate 494, one of Minnesota's major highways.

# six-story hangar, flight kitchen, "robot", bus serve north central's main base



The huge hangar area, more than six stories high, is capable of housing nine Douglas DC-9 fan jet aircraft at one time or 15 Convair 580 prop-jets. Divided into three hangar bays, the total area includes 120,000 square feet. A visitor who begins at one end of the hangar will have walked the length of 2-½ football fields when he reaches the opposite end! The corporate sign on the outside of the building is the largest of its type in Minnesota. The letters of "North Central Airlines" are ten feet tall and extend 680 feet, including the company insignia. In construction of the sign, over seven tons of steel, 3,090 feet of neon tubing, 68 transformers and 35 gallons of paint were used. When the giant letters are illuminated at night, the company's name can be seen for miles, particularly since the building faces Interstate 494, one of Minnesota's busiest expressways.

# north central's main base



C-9 fan jet aircraft at one time or 15 Convair 580 prop-jets. Divided into three hangar hangar will have walked the length of 2-1/2 football fields when he reaches the opposite Minnesota. The letters of "North Central Airlines" are ten feet tall and extend 680 feet, 190 feet of neon tubing, 68 transformers and 35 gallons of paint were used. When the hangar was built, 100,000 man-hours were required. It is particularly busy since the building faces Interstate 494, one of Minnesota's busiest expressways.



"Tiger Tow", a remote control driverless tractor, is an example of the many time-saving refinements that are part of the maintenance operation. This "robot" carries all types of parts and follows a 1,600-foot long indoor course. It travels about 13 miles a day between the various maintenance shops and North Central's stores and inventory control area where the company's 30,000 different stock items — valued at approximately \$4 million — are kept. North Central's personnel "minibuses" (below) provide an added convenience with their scheduled trips between the headquarters facility and the Minneapolis-St. Paul International Airport terminal building. The vehicles are used primarily for transporting North Central crew members and other personnel to flights and for carrying mail and spare aircraft parts.



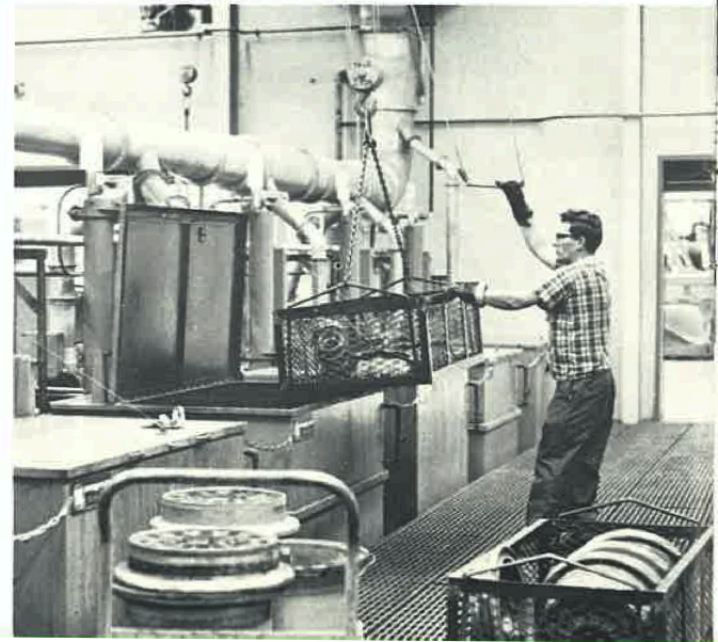
# maintenance base features advanced equipment,



North Central's electrical shop (photo right, above) repairs and overhauls a multitude of aircraft electrical components. Employees in this shop service such items as windshield and prop de-icing mechanisms, fuel and oil quantity systems, brake anti-skid apparatus, aircraft interior and emergency lights, thermostats, batteries, and even coffee-makers for the galleys of North Central's jet and prop-jet airliners. Various scheduled overhaul checks are also performed on electrical equipment with the newest in testing devices.

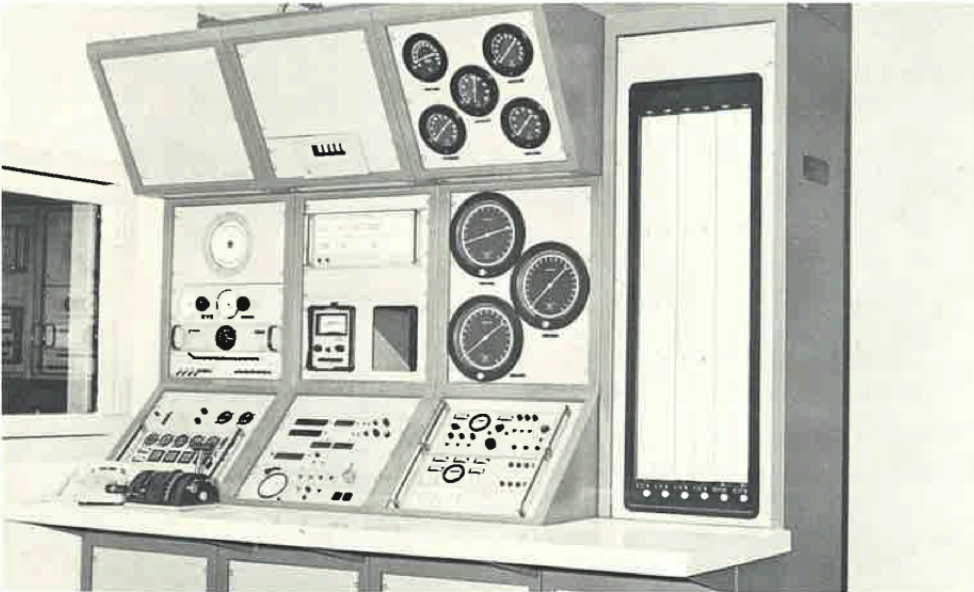
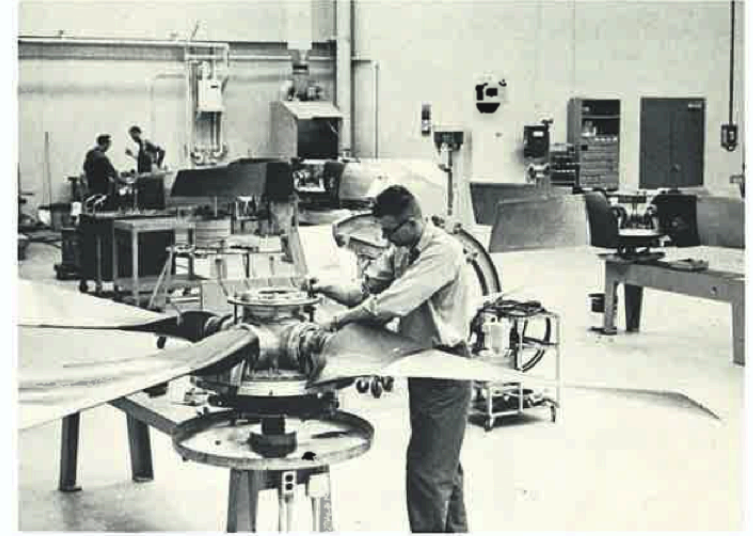
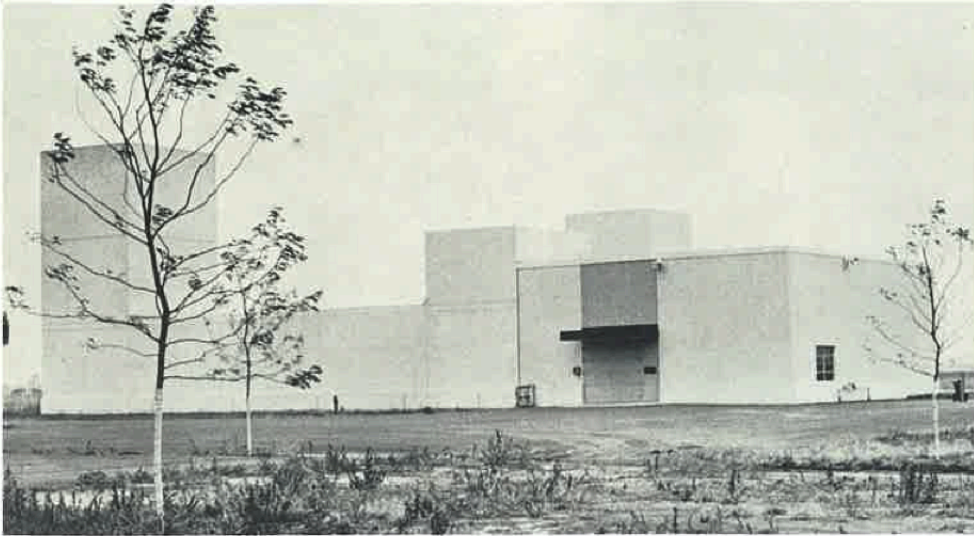


The parts cleaning room (photo right) is another innovation designed to promote efficiency of operation and save time. Here, in special cleaning tanks, aircraft components are chemically processed to remove carbons, greases and oils. The facility is used primarily for aircraft and engine parts, but its capabilities extend into other areas of cleaning.



North Central's automotive shop (photo left) has its own paint booth where large trucks and other equipment are repainted. A special environmental control technique is employed in the booth, whereby air is filtered and paint fumes are kept at a minimum. Repair and maintenance for most of the airline's ground service equipment is completed here.

# shops and engine test cell



An outstanding landmark at the Main Operations Base is the \$900,000 jet engine test cell. Inside this concrete and steel structure, (top photo) jet and prop-jet engines that have been repaired or overhauled are given operational test runs by means of highly scientific instruments (bottom photo). The engines can reach full power under completely soundproofed conditions. North Central is one of the few regional airlines to have its own jet test cell. Use of the facility saves both time and money since all testing is done by North Central personnel.

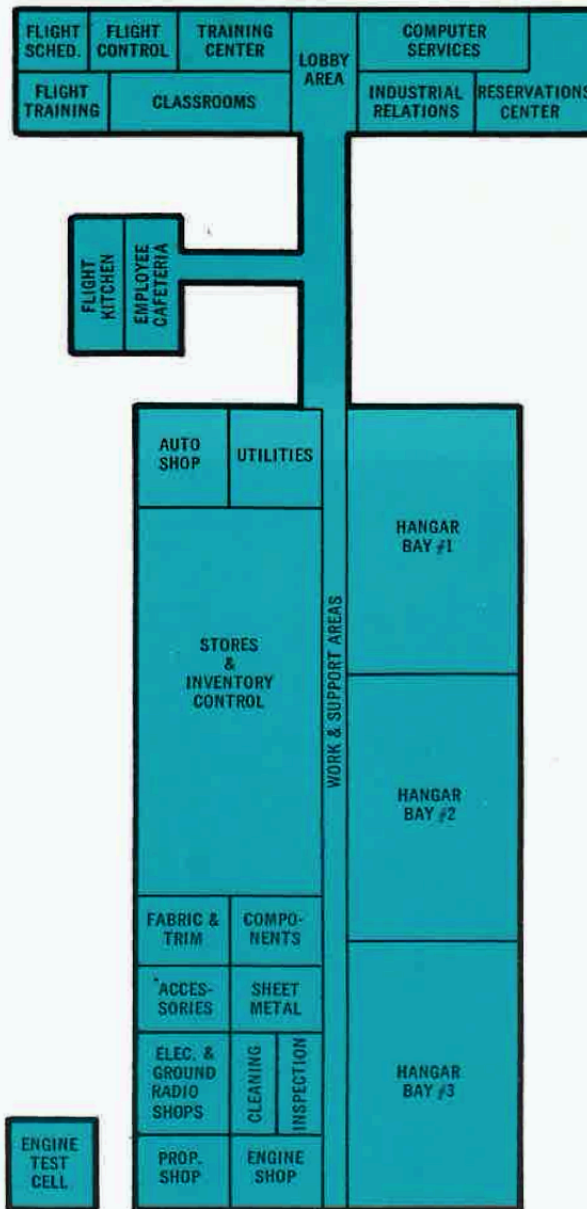
The prop shop (top photo) easily services six Convair 580 propellers at one time. Complete overhauls and inspections between overhauls are conducted in this facility. North Central is the first airline to establish its own propeller overhaul operation for the Convair 580. Facilities in the engine shop (bottom photo) enable the company's maintenance personnel to set up engines in various configurations preparatory to repair, while advanced hoisting equipment permits ease of handling. Both repairs and checks on jet and prop-jet engines are done in this shop area.



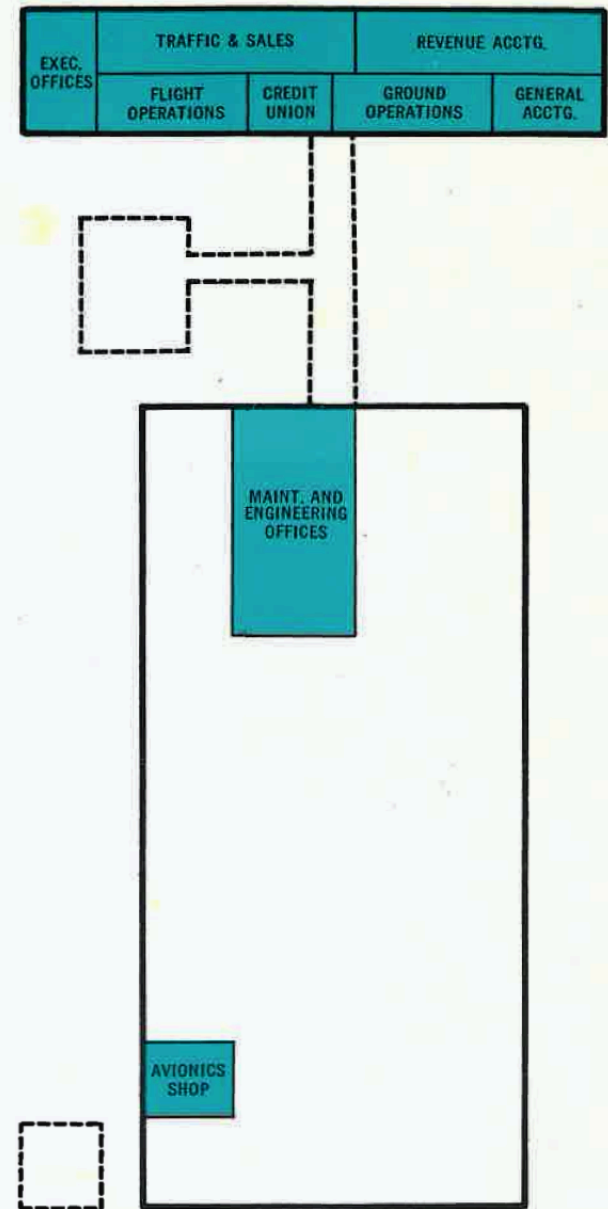
## LOWER LEVEL



## FIRST LEVEL



## SECOND LEVEL



### HEADQUARTERS STATISTICS

Total land area ..... 103 acres  
 Concrete aircraft/truck apron paving .... 7.3 acres  
 Total cubic feet of enclosed space ..... 15,400,000  
 Total square feet of floor space ..... 516,000  
 Size of 3-bay hangar area ..... 750 feet long x 160 feet wide  
 Hangar door height ..... 40 feet  
 Total hangar capacity ..... 9 DC-9 fan jets (or) 15 Convair 580 prop-jets (at one time)  
 Cost of headquarters complex ..... \$15,000,000  
 Personnel employed at facility ..... 1,200  
 Parking area ..... 1,135 cars

# NORTH CENTRAL AIRLINES

GENERAL OFFICE AND MAIN OPERATIONS BASE  
 7500 NORTHLINER DRIVE • MINNEAPOLIS, MINNESOTA 55450