

June 1, 1975  
Flight Directory



Southern





# WE'VE GOT THE CAYMAN ISLANDS WRAPPED UP.

We've just added brand new package tours that make the beautiful Cayman Islands even more attractive than they already are. Between now and December 15, 1975, one of our plans is ready and waiting to give you a Caribbean vacation filled with sunshine, ocean, white beaches, warm breezes and very friendly people.

## **Family Packages.**

There are two versions of these plans: 4 days and 3 nights, or 8 days and 7 nights. No matter which one fits your family's schedule best, you'll enjoy an excellent room right on the clearest, most sparkling ocean water anywhere.

## **Diving Packages.**

Colorful coral reefs are so close you can easily swim to them right off the beach, and



there are hundreds of shipwrecks filled with exotic fish to investigate, too. And naturally, each of our different hotel/diving plans include several scuba dives and/or snorkeling trips. In fact, for 7 days and 6 nights, you'll get in more diving—and more *spectacular* diving—than you ever dreamed possible.

**Honeymoon Packages.** The Cayman Islands only have a total of 800 rooms, which means they're never packed with crowds. And which also means they're the perfect place to get away and spend time really getting to know someone—for 7 tropical days and 6 gorgeous nights.

For all the details on any of these packages, just call your travel agent.

## **NOBODY'S SECOND CLASS ON SOUTHERN.**





# Nobody's second class on Southern





## General Information

### How to Use the Flight Directory

Simply look up the city from which you wish to begin your trip. These originating cities will be listed alphabetically in the color panels on the following pages. Look down the alphabetical listing of cities under the color panel to find your desired destination. Once you have located your origin and destination cities, you may use the legend below to accurately read Southern's time-saver flight directory.

	1	2	3	4
	Leave	Arrive	Freq. Stops	Flight No. Connect At
<b>From</b>	<b>New Orleans, La.</b>			
<b>To</b>	<b>St. Louis, Mo.</b>			
	7 20a	9 33a	1	330/332 MEM
	9 20a	11 25a	1	
	12 00n	2 08p	1	338
	8 20p	10 28p	Ex Sa	350/247 MEM
	5	6	7	8
				9
				10
				11
				12

#### Explanation of Abbreviations and Symbols

Mo—Monday	Fr—Friday	a—A.M.	D—Dinner
Tu—Tuesday	Sa—Saturday	p—P.M.	S—Snack Service
We—Wednesday	Su—Sunday	B—Breakfast	L—LaGuardia Airport
Th—Thursday	Ex—Except on	L—Lunch	M—Midway Airport
			O—O'Hare Airport

Connecting city codes are explained on the last page.

1. Originating city.
2. Local telephone number for Southern reservations.
3. Telephone number for air freight service—if this line does not appear, call the number in the panel.
4. Meal service on first flight.
5. Destination city.
6. Leave—departure time from your city shown in local time.
7. Arrive—arrival time at your destination city shown in local time.
8. Exceptions to the daily operation of the flight.
9. Number of stops to destination.
10. Flight number(s). If connecting flights are involved, flight numbers are shown in sequence.
11. Symbol for connecting city.
12. Meal service on second flight.

### Baggage

The free baggage allowance, solely within the Continental United States and/or Canada, is three bags having linear dimensions no greater than 62", 55", and 45". The free baggage allowance for travel outside the Continental United States and/or Canada is 44 pounds. Luggage in excess of the free allowance will be transported only after payment of charges in accordance with the appropriate tariff. Any piece having linear dimensions exceeding 80" or weighing more than 70 pounds will not be accepted as baggage. Government safety regulations limit carry-on baggage to items that can be stored under the passenger's seat. All passenger baggage is accepted subject to tariff limitations.

### Restricted Articles in Baggage

Articles such as the following SHALL NOT be carried in passengers' baggage without consent of and prior arrangement with Southern: Compressed gases (flammable, non-flammable and Poisonous); Corrosives (such as acids, wet batteries); Explosives, munitions, fireworks and articles which are easily ignited; Flammable liquids and solids (such as flammable aerosols, lighter or heating fuels, matches); Oxidising materials; Poisons; Radioactive materials; Other restricted articles (such as mercury, magnetic material, offensive or irritating materials).

### Hotel/ Car Rentals

Reservations for hotel space and car rentals may be made through any Southern office at the same time your flight space is reserved. Your Southern Agent will be happy to assist you.

### Equipment

Flights are scheduled with 75 and 95 passenger Douglas DC-9 FanJET aircraft designated by flight numbers 130-799 and 40 passenger Martin-404 aircraft designated by flight numbers 800-899.

### Charge Accounts

Southern honors various major credit cards including its own Local Air Travel Plan for travel over the routes of Southern and certain trunk airlines. Your Southern Agent will be happy to furnish details.

### Reservations

Must be made in advance at any airline ticket office or travel agency. Passengers are requested to check in at the airport counter at least 45 minutes before flight departure to allow ample time for checking in and security screening. Persons may be refused passage if arriving at ticket lift position less than 10 minutes (30 minutes in Grand Cayman) before departure time when accommodating them may delay the departure.

### Grand Cayman Reconfirmation

Passengers staying in Grand Cayman more than 72 hours must reconfirm their reservations with Southern at least 72 hours before scheduled departure of their flight. Failure to do so will result in the cancellation of all remaining reservations.

### Responsibility for Departures-Arrivals-Connections

Southern will not be responsible for damages resulting from the failure of flights to depart or arrive at times stated in this flight directory, nor for failure to make connections with planes of other airlines or of this company. Schedules are subject to change without notice and are based on expected flying times. Because weather and other factors may affect operating conditions, departures and arrivals cannot be guaranteed.

### Children

One child, under 2 and not occupying a seat, and accompanied by a fare paying passenger at least 12 years of age, will be carried free. No child under 5 may travel unaccompanied under conditions outlined in appropriate tariffs.

### Holidays

Some flights may not operate during holiday periods and some flights may be added during holiday periods. Consult Southern for details.

### Southern Airways, Inc.

General Offices: Hartsfield Atlanta International Airport, Atlanta, Georgia 30320.



	Leave	Arrive	Freq.	Stops	Flight No.	Connect At	Meal
<b>From Albany, Ga.</b> <b>To</b>							
<b>436-2418</b> For Air Freight Call 435-8341							
Anniston, Ala.	7 05p 7 05p	8 27p 8 27p	Ex Sa Su Sa Su Only	1	526/820 526/808	ATL ATL	
Athens, Ga.	7 05p	9 09p		1	526/871	ATL	
Atlanta, Ga.	7 30a 10 30a 12 25p 4 20p 7 05p	8 30a 11 30a 1 00p 5 20p 7 40p	Ex Sa Su	0	852 886 514 888 526		S
Birmingham, Ala.	7 30a	9 50a		1	852/137	ATL	S/
Charleston, S.C.	7 30a	12 03p		2	852/849	ATL	S/
Charlotte, N.C.	12 25p 7 05p	3 39p 9 39p		2	514/136 526/144	ATL ATL	
Chattanooga, Tenn.	7 30a	10 50a		1	852/632	ATL	S/
Columbia, S.C.	7 30a	11 09a		1	852/849	ATL	S/
Detroit, Mich.	7 30a	1 05p		3	852/632	ATL	S/L
Dothan, Ala.	11 10a	10 32a		0	513		
Gadsden, Ala.	7 05p 7 05p	8 56p 8 56p	Ex Sa Su Sa Su Only	2	526/820 526/808	ATL ATL	
Golden Triangle Regional Airport, Miss.	12 25p 7 05p	1 38p 8 35p	Ex Sa	2	514/135 526/145	ATL ATL	
Greenville/Spartanburg, S.C.	12 25p 7 05p	3 05p 9 00p		1	514/136 526/144	ATL ATL	
Huntsville/Decatur, Ala.	12 25p 7 05p	1 18p 8 28p		1	514/245 526/249	ATL ATL	
Meridian, Miss.	7 30a 7 05p	10 32a 9 15p	Ex Sa	2	852/137 526/145	ATL ATL	S/
Muscle Shoals, Ala.	12 25p 7 05p	1 53p 9 07p		2	514/245 526/249	ATL ATL	
Nashville, Tenn.	7 30a 12 25p 4 20p	10 35a 2 59p 5 24p		2	852/632 514/165 888/169	ATL ATL ATL	S/ /S
Tuscaloosa, Ala.	12 25p 7 05p	1 02p 8 02p	Ex Sa	1	514/135 526/145	ATL ATL	
Valdosta, Ga.	5 45p	6 07p		0	525		

	Leave	Arrive	Freq.	Stops	Flight No.	Connect At	Meal
<b>From Anniston, Ala.</b> <b>To</b>							
<b>237-6721</b> For Air Freight Call 831-1351							
Albany, Ga.	7 05a 7 05a 7 05a 7 05a 12 18p	10 11a 10 11a 11 00a 11 00a 4 06p	Ex Mo Sa Su Mo Only Ex Mo Su Mo Su Only 1	1	810/881 800/881 810/513 800/513 817/885	ATL ATL ATL ATL ATL	S/ S/ S/ S/ S/
Atlanta, Ga.	7 05a 7 05a 11 30a 12 18p 3 17p 8 37p	8 45a 8 45a 1 10p 2 00p 5 32p 10 52p	Ex Mo Su Mo Su Only Th Sa Only 0 0 1	0	810 800 802 817 818 820		S S
Charleston, S.C.	7 05a 7 05a	12 03p 12 03p	Ex Mo Su Mo Su Only	2	810/849 800/849	ATL ATL	S/ S/
Charlotte, N.C.	12 18p	3 39p		2	817/136	ATL	
Chattanooga, Tenn.	7 05a 7 05a	10 50a 10 50a	Ex Mo Su Mo Su Only	1	810/632 800/632	ATL ATL	S/ S/
Columbia, S.C.	7 05a 7 05a	11 09a 11 09a	Ex Mo Su Mo Su Only	1	810/849 800/849	ATL ATL	S/ S/
Columbus, Ga.	7 05a 7 05a 12 18p	11 31a 11 31a 3 43p	Ex Mo Su Mo Su Only 1	1	810/823 800/823 817/225	ATL ATL ATL	S/ S/ S/
Detroit, Mich.	7 05a 7 05a	1 05p 1 05p	Ex Mo Su Mo Su Only	3	810/632 800/632	ATL ATL	S/L S/L
Dothan, Ala.	7 05a 7 05a 11 30a 12 18p	10 32a 10 32a 1 24p 4 22p	Ex Mo Su Mo Su Only Th Sa Only 1	2	810/513 800/513 802/517 817/855	ATL ATL ATL ATL	S/ S/ S/

	Leave	Arrive	Freq.	Stops	Flight No.	Connect At	Meal
Eglin A.F.B./Fort Walton Beach, Fla.	7 05a 7 05a 11 30a	10 09a 10 09a 1 59p	Ex Mo Su Mo Su Only Th Sa Only	1 1 2	810/511 800/511 802/517	ATL ATL ATL	S/ S/
Gadsden, Ala.	3 17p 8 37p 8 37p	3 36p 8 56p 8 56p	Ex Sa Su Sa Su Only 0	0	818 820 808		
Greenville/Spartanburg, S.C.	12 18p	3 05p		1	817/136	ATL	
Miami, Fla.	12 18p	7 00p		5	817/225	ATL	
Moultrie/Thomasville, Ga.	7 05a 7 05a	12 27p 12 27p	Ex Mo Su Mo Su Only	2	810/823 800/823	ATL ATL	S/ S/
Nashville, Tenn.	7 05a 7 05a 12 18p	10 35a 10 35a 2 59p	Ex Mo Su Mo Su Only 1	2	810/632 800/632 817/165	ATL ATL ATL	S/ S/
Orlando, Fla.	12 18p	6 06p		4	817/225	ATL	
Panama City, Fla.	7 05a 7 05a 12 18p	10 50a 10 50a 3 32p	Ex Mo Su Mo Su Only 2	2	810/511 800/511 817/225	ATL ATL ATL	S/ S/
Tallahassee, Fla.	12 18p	5 09p		3	817/225	ATL	
Valdosta, Ga.	7 05a 7 05a	12 56p 12 56p	Ex Mo Su Mo Su Only	3	810/823 800/823	ATL ATL	S/ S/
<b>From Athens, Ga.</b> <b>To</b>							
<b>548-1364</b> For Air Freight Call 548-7008							
Albany, Ga.	7 45a 7 45a 3 55p	10 11a 11 00a 5 30p	Ex Sa Su	1	824/881 824/513 872/525	ATL ATL ATL	S/ S/
Atlanta, Ga.	7 45a 3 55p	8 15a 4 25p		0	824 872		S
Birmingham, Ala.	7 45a 3 55p	9 50a 4 45p	Ex Sa	1	824/137 872/141	ATL ATL	S/
Charlotte, N.C.	12 23p	3 39p		1	825/136	GSP	
Chattanooga, Tenn.	7 45a	10 50a		1	824/632	ATL	S/
Columbus, Ga.	3 55p	6 11p	Ex Sa	1	872/827	ATL	
Detroit, Mich.	7 45a	1 05p		3	824/632	ATL	S/L
Dothan, Ala.	7 45a	10 32a		2	824/513	ATL	S/
Eglin A.F.B./Fort Walton Beach, Fla.	7 45a 3 55p	10 09a 5 24p		1	824/511 872/519	ATL ATL	S/
Golden Triangle Regional Airport, Miss.	3 55p	6 06p		2	872/819	ATL	
Greenville/Spartanburg, S.C.	12 23p	12 58p		0	825		
Gulfport/Biloxi, Miss.	7 45a 3 55p	10 57a 6 38p		2	824/133 872/174	ATL ATL	S/
Memphis, Tenn.	3 55p	7 29p		4	872/819	ATL	
Meridian, Miss.	7 45a	10 32a		2	824/137	ATL	S/
Mobile, Ala./Pascagoula, Miss.	7 45a 3 55p 3 55p	10 22a 5 42p 6 03p	Ex Sa	1	824/133 872/141 872/174	ATL ATL ATL	S/
Nashville, Tenn.	7 45a 7 45a 3 55p	8 29a 10 35a 5 24p	Ex Sa Su	1	824/161 824/632 872/169	ATL ATL ATL	S/S S/ /S
New Orleans, La.	3 55p	6 25p	Ex Sa	3	872/141	ATL	
Panama City, Fla.	7 45a 3 55p	10 50a 4 53p		2	824/511 872/519	ATL ATL	S/
Pine Belt Regional Airport, Miss.	7 45a	11 14a		3	824/137	ATL	S/
Tupelo, Miss.	3 55p	6 47p		3	872/819	ATL	
Tuscaloosa, Ala.	3 55p	5 28p		1	872/819	ATL	
Valdosta, Ga.	3 55p	6 07p		2	872/525	ATL	



	Leave	Arrive	Freq.	Stops	Flight No.	Connect At	Meal
From <b>Baton Rouge, La. (Cont.)</b> To							
Dothan, Ala.	11 16a	1 31p		2	333/516	MSY	/S
Eglin A.F.B./Fort Walton Beach, Fla.	11 16a	12 47p		1	333/516	MSY	/S
Greenville, Miss.	6 35a 12 18p 6 15p	7 45a 1 27p 7 23p	Ex Su Ex Sa	1	334 340 350		S
Gulfport/Biloxi, Miss.	2 27p	4 45p		1	339/142	MSY	
Huntsville/Decatur, Ala.	6 35a 2 27p 6 15p	9 33a 5 48p 9 38p	Ex Su Ex Sa Ex Sa	3	334/413 339/244 350/248	MEM MSY MEM	S/S
Jackson/Vicksburg, Miss.	2 27p	3 55p	Ex Sa	1	339/244	MSY	
Jackson, Tenn.	6 35a 12 18p 6 15p	10 02a 2 55p 9 25p	Ex Sa Su Ex Sa Ex Sa	3	334/842 340/418 350/420	MEM MEM MEM	S/
Knoxville/Oak Ridge, Tenn.	12 18p 6 15p	5 26p 11 58p	Ex Sa	5	340/418 350/420	MEM MEM	
Memphis, Tenn.	6 35a 12 18p 2 27p 6 15p	8 30a 2 10p 4 45p 8 05p	Ex Su Ex Sa Ex Sa	2	334 340 339/244 350		S MSY
Mobile, Ala./Pascagoula, Miss.	2 27p 2 27p	5 00p 5 20p	Ex Sa	1	339/638 339/142	MSY MSY	
Monroe, La.	6 35a 12 18p 6 15p	7 06a 12 49p 6 46p	Ex Su Ex Sa	0	334 340 350		S
Muscle Shoals, Ala.	6 15p	9 32p	Ex Sa	3	350/846	MEM	
Nashville, Tenn.	6 35a 12 18p 2 27p 6 15p	11 00a 3 39p 6 45p 10 10p	Ex Sa Su Ex Sa Ex Sa	4	334/842 340/418 339/638 350/420	MEM MEM MSY MEM	S/
New Orleans, La.	11 16a 2 27p 10 49p	11 39a 2 50p 11 12p	Ex Sa	0	333 339 353		
St. Louis, Mo.	6 35a 6 15p	10 00a 9 33p	Ex Su Ex Sa	3	334/234 350/174	MEM MEM	S/
Tupelo, Miss.	12 18p	3 50p		3	340/816	MEM	
University/Oxford, Miss.	6 35a 12 18p	9 45a 4 55p	Ex Sa Su Ex Sa	3	334/833 340/837	MEM MEM	S/

From  
**Biloxi, Miss.**  
(See Gulfport/Biloxi, Miss.)

**864-2323**

From  
**Birmingham, Ala.**  
To

**252-4124**  
For Air Freight Call 592-9618

Albany, Ga.	1 00p	4 06p		1	138/885	ATL	
Atlanta, Ga.	1 00p	2 35p		0	138		
Baton Rouge, La.	8 45a	12 05p	Ex Su	2	631/340	MSY	S/
Chicago, Ill.	4 07p 7 42p	6 26p 10 03p	M O	1	218 226		S
Columbus, Ga.	1 00p	3 43p		1	138/225	ATL	
Detroit, Mich.	8 05a 4 20p 6 10p	11 05a 7 25p 9 15p	Ex Su Sa Only Ex Sa	1	630 606 638		SB D D
Dothan, Ala.	1 00p	4 22p		1	138/855	ATL	
Eglin A.F.B./Fort Walton Beach, Fla.	5 00p	7 20p	Ex Sa	1	141/227	MOB	
Grand Cayman, B.W.I.	9 50a	2 00p		2	217/221	MIA	B/S
Greenville, Miss.	8 10a 7 42p 7 42p	9 44a 9 15p 9 15p	Ex Su Ex Sa Sa Only	1	234/333 226/353 226/303	MEM MEM MEM	S/
Greenwood, Miss.	8 10a	10 24a	Ex Sa Su	2	234/833	MEM	S/
Gulfport/Biloxi, Miss.	8 45a 5 00p 8 30p	10 57a 6 38p 9 47p	Ex Su Ex Sa Ex Sa	1	631/133 141/174 637	MOB MOB	S/

	Leave	Arrive	Freq.	Stops	Flight No.	Connect At	Meal
Jackson, Tenn.	8 10a 6 10p 7 42p	10 02a 7 30p 9 25p	Ex Sa Su Ex Sa Ex Sa	1	234/842 638/417 226/420	MEM BNA MEM	S/
Jacksonville, Fla.	2 25p 8 25p	4 25p 10 25p	Ex Sa	0	235 237		
Memphis, Tenn.	8 10a 4 07p 5 12p 7 42p	8 53a 4 50p 5 55p 8 25p	Ex Su	0	234 218 238 226		S
Meridian, Miss.	10 00a	10 32a		0	137		
Miami, Fla.	9 50a 1 00p 6 11p	12 58p 7 00p 9 47p		1	217 138/225 229	ATL	B D
Mobile, Ala./Pascagoula, Miss.	8 45a 11 35a 5 00p 8 30p	9 27a 12 17p 5 42p 9 12p	Ex Su Su Only Ex Sa Ex Sa	0	631 605 141 637		S
Monroe, La.	8 10a 8 45a 7 42p 7 42p	10 18a 12 49p 9 53p 9 53p	Ex Su Ex Su Ex Sa Sa Only	2	234/333 631/340 226/353 226/303	MEM MSY MEM MEM	S/ S/
Montgomery, Ala.	6 11p	6 36p		0	229		
Nashville, Tenn.	8 05a 1 00p 4 20p 6 10p	8 40a 2 59p 4 55p 6 45p	Ex Su Ex Sa Sa Only Ex Sa	0	630 138/165 606 638	ATL	S
New Orleans, La.	8 45a 11 35a 5 00p	10 10a 1 00p 6 25p	Ex Su Su Only Ex Sa	1	631 605 141		S
Orlando, Fla.	9 50a 1 00p 6 11p	12 04p 6 06p 8 52p		0	217 138/225 229	ATL	B D
Panama City, Fla.	1 00p	3 32p		2	138/225	ATL	
Pine Belt Regional Airport, Miss.	10 00a	11 14a		1	137		
St. Louis, Mo.	8 10a 5 12p 7 42p	10 00a 7 03p 9 33p	Ex Su	1	234 238 226/174	MEM	S
Tallahassee, Fla.	1 00p	5 09p		3	138/225	ATL	
University/Oxford, Miss.	8 10a	9 45a	Ex Sa Su	1	234/833	MEM	S/
Valdosta, Ga.	1 00p	6 07p		2	138/525	ATL	

From  
**Bristol, Tenn.-Va.**  
(See Tri-cities)

**323-4144**

From  
**Charleston, S.C.**  
To

**800-241-2521**  
For Air Freight Call 747-4024

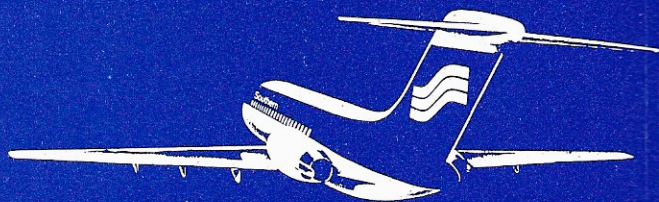
Albany, Ga.	12 25p	4 06p		2	848/885	ATL	
Anniston, Ala.	12 25p	3 07p		2	848/818	ATL	
Atlanta, Ga.	12 25p	2 23p		1	848		
Columbia, S.C.	12 25p	1 02p		0	848		
Columbus, Ga.	12 25p	3 43p		2	848/225	ATL	
Dothan, Ala.	12 25p	4 22p		2	848/855	ATL	
Gadsden, Ala.	12 25p	3 36p		3	848/818	ATL	
Huntsville/Decatur, Ala.	12 25p	3 38p		2	848/247	ATL	
Memphis, Tenn.	12 25p	4 30p		3	848/247	ATL	
Nashville, Tenn.	12 25p	2 59p		2	848/165	ATL	
Panama City, Fla.	12 25p	3 32p		3	848/225	ATL	
St. Louis, Mo.	12 25p	5 38p		4	848/247	ATL	

From  
**Charlotte, N.C.**  
To

**800-241-2521**  
For Air Freight Call 399-0511

Albany, Ga.	8 05a	11 00a		2	131/513	ATL	S/
Anniston, Ala.	8 05a	10 57a	Th Sa Only	2	131/803	ATL	S/





# Nobody's second class on Southern

from  
**Birmingham**

Non-stop  
**Orlando  
Jacksonville  
Nashville  
Atlanta  
Memphis  
Mobile**

from  
**Jacksonville**

Non-stop  
**Birmingham**  
One-stop  
**Memphis**  
Direct Service  
**St. Louis**

from  
**Atlanta**

Non-stop  
**Nashville  
Greenville-  
Spartanburg  
Mobile  
Birmingham**

from  
**Chicago**

Non-stop  
**Memphis**  
One-stop  
**Birmingham  
Jackson, Miss.**

from  
**New Orleans**

Non-stop  
**Memphis  
Jackson, Miss.  
Mobile**  
One-stop  
**Birmingham  
St. Louis**

Direct Flights  
**Chicago  
Detroit  
Nashville**

from  
**Mobile**

Non-stop  
**Atlanta  
Birmingham  
New Orleans**  
One-stop  
**Memphis  
Nashville  
Orlando  
Washington**

Direct Service  
**Chicago  
Detroit  
Miami  
New York  
St. Louis**

from  
**St. Louis**

Non-stop  
**Memphis**  
One-stop  
**New Orleans  
Birmingham**  
Direct Service  
**Jacksonville**

from  
**Miami**

Non-stop  
**Orlando  
Grand Cayman**

One-stop  
**Birmingham  
Tallahassee**

Direct Service  
**Memphis  
Nashville  
Mobile**

from  
**Detroit**

Nonstop  
**Nashville**  
Direct Service  
**Birmingham  
Huntsville  
Mobile  
New Orleans**

from  
**Memphis**

Non-stop  
**St. Louis  
Chicago  
New Orleans  
Chattanooga  
Jackson  
Birmingham**

One-stop  
**Jacksonville  
Orlando  
Knoxville**

Direct Service  
**Miami**

from  
**Nashville**

Non-stop  
**Atlanta  
Birmingham  
Chattanooga  
Detroit  
Huntsville  
Knoxville**

Direct Service  
**Miami  
Orlando  
Mobile  
New Orleans**



	Leave	Arrive	Freq.	Stops	Flight No.	Connect At	Meal
<b>From</b>							
<b>Charlotte, N.C. (Cont.)</b>							
<b>To</b>							
Atlanta, Ga.	8 05a 4 05p	9 20a 5 20p		1 1	131 174		S
Birmingham, Ala.	8 05a	9 50a		2	131/137	ATL	S/
Chattanooga, Tenn.	8 05a	10 50a		2	131/632	ATL	S/
Columbus, Ga.	8 05a	11 31a		2	131/823	ATL	S/
Detroit, Mich.	8 05a	1 05p		4	131/632	ATL	S/L
Dothan, Ala.	8 05a	10 32a		3	131/513	ATL	S/
Eglin A.F.B./Fort Walton Beach, Fla.	8 05a	10 09a		2	131/511	ATL	S/
Greenville/Spartanburg, S.C.	8 05a 4 05p	8 29a 4 29p		0 0	131 174		S
Gulfport/Biloxi, Miss.	8 05a 4 05p	10 57a 6 38p		3 3	131/133 174	ATL	S/
Huntsville/Decatur, Ala.	8 05a	10 38a		2	131/163	ATL	S/
Meridian, Miss.	8 05a	10 32a		3	131/137	ATL	S/
Mobile, Ala./Pascagoula, Miss.	8 05a 4 05p	10 22a 6 03p		2 2	131/133 174	ATL	S/
Moultrie/Thomasville, Ga.	8 05a	12 27p		3	131/823	ATL	S/
Nashville, Tenn.	8 05a 4 05p	10 35a 5 24p		3 2	131/632 174/169	ATL	S/ /S
New Orleans, La.	4 05p	9 15p		4	174/717	MOB	
Panama City, Fla.	8 05a	10 50a		3	131/511	ATL	S/
Pine Belt Regional Airport, Miss.	8 05a	11 14a		4	131/137	ATL	S/
Valdosta, Ga.	8 05a	12 56p		4	131/823	ATL	S/

	Leave	Arrive	Freq.	Stops	Flight No.	Connect At	Meal
<b>From</b>							
<b>Chattanooga, Tenn.</b>							
<b>To</b>							
<b>265-4536</b> For Air Freight Call 894-0002							
Albany, Ga.	3 55p	5 30p		1	633/525	ATL	
Atlanta, Ga.	3 55p 11 34p	4 25p 12 01a	Ex Sa	0 0	633 248		
Baton Rouge, La.	7 57a	11 06a	Ex Su	4	241/333	MEM	S/
Birmingham, Ala.	3 55p	4 45p	Ex Sa	1	633/141	ATL	
Chicago, Ill.	7 57a 4 33p	10 08a 6 26p	Ex Su	2 1	241/334 415/218	MEM MEM	S/B /S
Columbus, Ga.	3 55p	6 11p	Ex Sa	1	633/827	ATL	
Detroit, Mich.	11 04a	1 05p		1	632		L
Eglin A.F.B./Fort Walton Beach, Fla.	3 55p	5 24p		2	633/519	ATL	
Golden Triangle Regional Airport, Miss.	3 55p	6 06p		2	633/819	ATL	
Greenville, Miss.	7 57a	9 44a	Ex Su	2	241/333	MEM	S/
Greenwood, Miss.	7 57a	10 24a	Ex Sa Su	3	241/833	MEM	S/
Gulfport/Biloxi, Miss.	7 57a 3 55p	11 25a 6 38p	Ex Su	3 2	241/321 633/174	MEM ATL	S/
Huntsville/Decatur, Ala.	7 57a	7 23a	Ex Su	0	241		S
Jackson/Vicksburg, Miss.	4 33p	5 53p		1	415/227	MEM	
Jackson, Tenn.	11 04a	12 03p	Ex Sa	1	632/847	BNA	
Knoxville/Oak Ridge, Tenn.	1 45p	2 10p		0	412		
Memphis, Tenn.	7 57a 11 04a 4 33p	8 15a 12 45p 4 20p	Ex Su Ex Sa	1 2 0	241 632/847 415	BNA	S
Miami, Fla.	7 57a	12 03p	Ex Su	2	241/215	HSV	S/B
Mobile, Ala./Pascagoula, Miss.	7 57a 3 55p 3 55p 4 33p	10 35a 5 42p 6 03p 6 36p	Ex Su Ex Sa	3 2 1 2	241/413 633/141 633/174 415/227	MEM ATL ATL MEM	S/S

	Leave	Arrive	Freq.	Stops	Flight No.	Connect At	Meal
Monroe, La.	7 57a	10 18a	Ex Su	3	241/333	MEM	S/
Nashville, Tenn.	11 04a	10 35a		0	632		
New Orleans, La.	7 57a 11 04a 3 55p	10 08a 1 45p 6 25p	Ex Su Ex Su Ex Sa	2 2 3	241/321 632/635 633/141	MEM BNA ATL	S/ /S
Orlando, Fla.	7 57a	11 08a	Ex Su	1	241/215	HSV	S/B
Panama City, Fla.	3 55p	4 53p		1	633/519	ATL	
St. Louis, Mo.	7 57a 4 33p	10 00a 5 38p	Ex Su	2 1	241/234 415/247	MEM MEM	S/
Tri Cities, Tenn., Va.	1 45p	2 49p		1	412		
Tuscaloosa, Ala.	3 55p	5 28p		1	633/819	ATL	
University/Oxford, Miss.	7 57a	9 45a	Ex Sa Su	2	241/833	MEM	S/
Valdosta, Ga.	3 55p	6 07p		2	633/525	ATL	

	Leave	Arrive	Freq.	Stops	Flight No.	Connect At	Meal
<b>From</b>							
<b>Chicago, Ill.</b>							
<b>M - Midway O - O'Hare</b>							
<b>726-6273</b> Surrounding Areas Dial 800-241-9385 For Air Freight Call 471-3525							
<b>To</b>							
Atlanta, Ga.	O 3 30p M 7 05p	7 40p 12 01a	Ex Sa Ex Sa	2 3	227/244 353/248	MEM MEM	S/ D/
Baton Rouge, La.	O 7 15a O 10 45a O 1 55p M 7 05p	11 06a 2 16p 6 00p 10 39p	Ex Sa Ex Sa Ex Sa	3 3 3 3	217/333 339 345/350 353	MEM S MSY D	B/ S S/ D
Birmingham, Ala.	O 7 15a O 10 45a O 3 30p	9 36a 2 11p 5 56p		1 1 1	217 339/235 227/229	MEM MEM MEM	BS S/ S/
Chattanooga, Tenn.	M 7 05p	11 19p	Ex Sa	2	353/248	MEM	D/
Dothan, Ala.	O 3 30p	9 16p	Ex Sa	4	227/520	VPS	S/
Eglin A.F.B./Fort Walton Beach, Fla.	O 3 30p	7 20p		3	227		S
Golden Triangle Regional Airport, Miss.	O 10 45a M 7 05p M 7 05p	1 20p 9 37p 9 37p	Ex Sa Sa Only	1 1 1	339/812 353/355 303/355	MEM MEM MEM	S/ D/ D/
Grand Cayman, B.W.I.	O 7 15a	2 00p		4	217/221	MIA	BS/S
Greenville, Miss.	O 7 15a O 10 45a M 7 05p M 7 05p	9 44a 12 55p 9 15p 9 15p	Ex Sa Sa Only	1 1 1 1	217/333 339 353 303	MEM S D D	B/ S D D
Greenwood, Miss.	O 7 15a O 1 55p	10 24a 5 34p	Ex Sa Ex Sa	2 2	217/833 345/837	MEM MEM	B/ S/
Gulfport/Biloxi, Miss.	O 7 15a O 10 45a O 1 55p	11 25a 4 45p 7 25p	Ex Sa	2 5 3	217/321 339/142 345/520	MEM MSY MSY	B/ S/ S/
Huntsville/Decatur, Ala.	O 7 15a O 3 30p M 7 05p	9 33a 5 48p 9 38p	Ex Su Ex Sa Ex Sa	1 1 1	217/413 227/244 353/248	MEM MEM MEM	B/S S/ D/
Jackson/Vicksburg, Miss.	O 1 55p O 3 30p	4 13p 5 53p		1 1	345 227		S S
Jackson, Tenn.	O 7 15a M 7 05p	10 02a 9 25p	Ex Sa Ex Sa	1 1	217/842 353/420	MEM MEM	B/ D/
Jacksonville, Fla.	O 10 45a	4 25p		2	339/235	MEM	S/
Knoxville/Oak Ridge, Tenn.	M 7 05p	11 58p	Ex Sa	3	353/420	MEM	D/
Memphis, Tenn.	O 7 15a O 10 45a O 1 55p O 3 30p M 7 05p M 7 05p	8 35a 12 05p 3 15p 4 50p 8 20p 8 20p		0 0 0 0 0 0	217 339 345 227 353 303		B S S S D D
Meridian, Miss.	M 7 05p M 7 05p	10 15p 10 15p	Ex Sa Sa Only	2 2	353/355 303/355	MEM MEM	D/ D/
Miami, Fla.	O 7 15a O 3 30p O 3 30p	12 58p 9 47p 10 39p		3 4 5	217 227/229 227	MEM	BS S/D S
Mobile, Ala./Pascagoula, Miss.	O 7 15a O 7 15a O 10 45a O 3 30p	10 35a 12 00n 5 00p 6 36p	Ex Su Ex Sa	2 3 5 2	217/413 217/321 339/638 227	MEM MEM MSY	B/S B/ S/ S



	Leave	Arrive	Freq.	Stops	Flight No.	Connect At	Meal
Monroe, La.	O 7 15a	10 18a		2	217/333	MEM	B/
	O 10 45a	1 31p		2	339		S
	M 7 05p	9 53p	Ex Sa	2	353		D
	M 7 05p	9 53p	Sa Only	2	303		D
Montgomery, Ala.	O 7 15a	9 55a		1	217/211	MEM	B/
	O 3 30p	6 36p		2	227/229	MEM	S/
Muscle Shoals, Ala.	M 7 05p	9 32p	Ex Sa	1	353/846	MEM	D/
	M 7 05p	9 32p	Sa Only	1	303/846	MEM	D/
Nashville, Tenn.	O 7 15a	11 00a	Ex Sa	2	217/842	MEM	B/
	M 7 05p	10 10p	Ex Sa	2	353/420	MEM	D/
New Orleans, La.	O 7 15a	10 08a		1	217/321	MEM	B/
	O 10 45a	2 50p		4	339		S
	O 1 55p	5 00p		2	345		S
	O 3 30p	9 15p		4	227/717	MOB	S/
	M 7 05p	11 12p	Ex Sa	4	353		D
Orlando, Fla.	O 7 15a	12 04p		2	217		BS
	O 3 30p	8 52p		3	227/229	MEM	S/D
	O 3 30p	9 44p		4	227		S
Pine Belt Regional Airport, Miss.	M 7 05p	10 55p	Ex Sa	3	353/355	MEM	D/
	M 7 05p	10 55p	Sa Only	3	303/355	MEM	D/
Tallahassee, Fla.	O 7 15a	11 47a		2	217/211	MEM	B/
Tri Cities, Tenn., Va.	M 7 05p	12 40a	Ex Sa	4	353/420	MEM	D/
Tupelo, Miss.	O 10 45a	1 55p	Ex Sa Su	1	339/814	MEM	S/
Tuscaloosa, Ala.	O 10 45a	2 01p		2	339/812	MEM	S/
University/Oxford, Miss.	O 7 15a	9 45a	Ex Sa	1	217/833	MEM	B/
	O 1 55p	4 55p	Ex Sa	1	345/837	MEM	S/

From **Columbia, S.C.**  
To **254-5181**  
For Air Freight Call 794-2071

Albany, Ga.	1 12p	4 06p		1	848/885	ATL	
Anniston, Ala.	1 12p	3 07p		1	848/818	ATL	
Atlanta, Ga.	1 12p	2 23p		0	848		
Charleston, S.C.	11 24a	12 03p		0	849		
Columbus, Ga.	1 12p	3 43p		1	848/225	ATL	
Dothan, Ala.	1 12p	4 22p		1	848/855	ATL	
Gadsden, Ala.	1 12p	3 36p		2	848/818	ATL	
Huntsville/Decatur, Ala.	1 12p	3 38p		1	848/247	ATL	
Memphis, Tenn.	1 12p	4 30p		2	848/247	ATL	
Miami, Fla.	1 12p	7 00p		5	848/225	ATL	
Nashville, Tenn.	1 12p	2 59p		1	848/165	ATL	
Orlando, Fla.	1 12p	6 06p		4	848/225	ATL	
Panama City, Fla.	1 12p	3 32p		2	848/225	ATL	
St. Louis, Mo.	1 12p	5 38p		3	848/247	ATL	
Tallahassee, Fla.	1 12p	5 09p		3	848/225	ATL	

From **Columbus, Ga.**  
To **324-2493**  
For Air Freight Call 324-2401

Anniston, Ala.	2 07p	3 07p		1	216/818	ATL	
	6 35p	8 27p	Ex Sa Su	1	874/820	ATL	
	6 35p	8 27p	Su Only	1	874/808	ATL	
Athens, Ga.	6 35p	9 09p	Ex Sa	1	874/871	ATL	
Atlanta, Ga.	2 07p	2 35p		0	216		
	6 35p	7 15p	Ex Sa	0	874		
Charlotte, N.C.	6 35p	9 39p	Ex Sa	2	874/144	ATL	
Dothan, Ala.	1 10p	12 34p		0	713		
Eglin A.F.B./Fort Walton Beach, Fla.	1 10p	1 20p		1	713		
Gadsden, Ala.	2 07p	3 36p		2	216/818	ATL	
	6 35p	8 56p	Ex Sa Su	2	874/820	ATL	
	6 35p	8 56p	Su Only	2	874/808	ATL	
Golden Triangle Regional Airport, Miss.	6 35p	8 35p	Ex Sa	2	874/145	ATL	

	Leave	Arrive	Freq.	Stops	Flight No.	Connect At	Meal
Greenville/Spartanburg, S.C.	6 35p	9 00p	Ex Sa	1	874/144	ATL	
Gulfport/Biloxi, Miss.	1 10p	2 58p		2	713/517	VPS	
	8 23p	8 37p		1	717		
Huntsville/Decatur, Ala.	2 07p	3 38p		1	216/247	ATL	
	6 35p	8 28p	Ex Sa	1	874/249	ATL	
Memphis, Tenn.	2 07p	4 30p		2	216/247	ATL	
Meridian, Miss.	6 35p	9 15p	Ex Sa	3	874/145	ATL	
Miami, Fla.	1 10p	5 25p		4	713		
	3 58p	7 00p		3	225		
Mobile, Ala./Pascagoula, Miss.	8 23p	8 03p		0	717		
Moultrie/Thomasville, Ga.	11 45a	12 27p		0	823		
Muscle Shoals, Ala.	6 35p	9 07p	Ex Sa	2	874/249	ATL	
Nashville, Tenn.	2 07p	2 59p		1	216/165	ATL	
New Orleans, La.	1 10p	3 45p		3	713/517	VPS	
	8 23p	9 15p		2	717		
New York, N.Y./Newark, N.J.	2 10p	4 40pL		1	321		L
	5 15p	7 50pL		1	716		D
Orlando, Fla.	1 10p	4 28p		3	713		
	3 58p	6 06p		2	225		
Panama City, Fla.	3 58p	3 32p		0	225		
St. Louis, Mo.	2 07p	5 38p		3	216/247	ATL	
Tallahassee, Fla.	1 10p	3 19p		2	713		
	3 58p	5 09p		1	225		
Tuscaloosa, Ala.	6 35p	8 02p	Ex Sa	1	874/145	ATL	
Valdosta, Ga.	11 45a	12 56p		1	823		
Washington, D.C. (Dulles Intl Airport)	2 10p	3 33p		0	321		L
	5 15p	6 38p		0	716		D

From **Columbus, Miss.**  
(See Golden Triangle Regional Airport, Miss.) **328-4900**

From **Decatur, Ala.**  
(See Huntsville/Decatur, Ala.) **353-2690**

From **Detroit, Mich.**  
Surrounding Area Dial **964-2323**  
**800-241-9385**  
For Air Freight Call 562-8717

Albany, Ga.	1 40p	5 30p		3	633/525	ATL	
Atlanta, Ga.	7 25a	10 29a	Ex Sa Su	1	631/168	BNA	B/S
	10 15a	2 35p	Su Only	2	605/138	BHM	
	1 40p	4 25p		2	633		
Baton Rouge, La.	7 25a	12 05p	Ex Su	4	631/340	MSY	BS/
Birmingham, Ala.	7 25a	8 30a	Ex Su	1	631		BS
	10 15a	11 20a	Su Only	1	605		
	1 40p	4 45p	Ex Sa	3	633/141	ATL	
	7 05p	8 10p	Ex Sa	1	637		D
Chattanooga, Tenn.	1 40p	3 41p		1	633		
Columbus, Ga.	1 40p	6 11p	Ex Sa	3	633/827	ATL	
Eglin A.F.B./Fort Walton Beach, Fla.	1 40p	5 24p		4	633/519	ATL	
Golden Triangle Regional Airport, Miss.	1 40p	6 06p		4	633/819	ATL	
Gulfport/Biloxi, Miss.	7 25a	10 57a	Ex Su	3	631/133	MOB	BS/
	1 40p	6 38p		4	633/174	ATL	
	7 05p	9 47p	Ex Sa	3	637		D
Huntsville/Decatur, Ala.	7 25a	8 36a	Ex Su	1	631/215	BNA	B/
	11 40a	12 31p	Ex Su	1	635		L
Jackson, Tenn.	10 15a	12 03p	Su Only	1	605/847	BNA	
Jacksonville, Fla.	7 05p	10 25p	Ex Sa	2	637/237	BHM	D/
Knoxville/Oak Ridge, Tenn.	1 40p	5 26p		1	633/418	BNA	



	Leave	Arrive	Freq.	Stops	Flight No.	Connect At	Meal
<b>From</b> <b>Detroit, Mich. (Cont.)</b> <b>To</b>							
Memphis, Tenn.	10 15a	12 45p	Su Only	2	605/847	BNA	
Meridian, Miss.	7 25a	10 32a	Ex Su	2	631/137	BHM	BS/
Miami, Fla.	7 25a	12 03p	Ex Su	3	631/215	BNA	B/B
Mobile, Ala./Pascagoula, Miss.	7 25a 10 15a 1 40p 1 40p 7 05p	9 27a 12 17p 5 42p 6 03p 9 12p	Ex Su Su Only Ex Sa Ex Sa Ex Sa	2 2 4 3 2	631 605 633/141 633/174 637	ATL ATL	BS D
Muscle Shoals, Ala.	11 40a	1 53p	Ex Su	2	635/245	HSV	L/
Nashville, Tenn.	7 25a 10 15a 11 40a 1 40p 7 05p	7 35a 10 25a 11 50a 1 50p 7 15p	Ex Su Su Only Ex Su Ex Sa Ex Sa	0 0 0 0 0	631 605 635 633 637		B L D
New Orleans, La.	7 25a 10 15a 11 40a	10 10a 1 00p 1 45p	Ex Su Su Only Ex Su	3 3 2	631 605 635		BS LS
Orlando, Fla.	7 25a	11 08a	Ex Su	2	631/215	BNA	B/B
Panama City, Fla.	1 40p	4 53p		3	633/519	ATL	
Pine Belt Regional Airport, Miss.	7 25a	11 14a	Ex Su	3	631/137	BHM	BS/
Tri Cities, Tenn., Va.	1 40p	6 07p		2	633/418	BNA	
Tuscaloosa, Ala.	1 40p	5 28p		3	633/819	ATL	
Valdosta, Ga.	1 40p	6 07p		4	633/525	ATL	

**From**  
**Dothan, Ala.**  
**To**

**792-3126**  
For Air Freight Call 983-4524

Albany, Ga.	10 53a	12 15p		0	514		
Anniston, Ala.	7 36a 4 45p 4 45p	10 57a 8 27p 8 27p	Th Sa Only Ex Sa Su Sa Su Only	1 1 1	510/803 856/820 856/808	ATL ATL ATL	S/
Athens, Ga.	7 36a 4 45p	12 03p 9 09p		1 1	510/825 856/871	ATL ATL	S/
Atlanta, Ga.	7 36a 10 53a 1 41p 4 45p 9 28p	9 15a 1 00p 3 20p 6 43p 11 07p		0 0 0 0 0	510 514 516 856 520		S
Baton Rouge, La.	1 34p	6 00p	Ex Sa	3	517/350	MSY	
Birmingham, Ala.	7 36a 1 41p	9 50a 4 45p		1 1	510/137 516/141	ATL ATL	S/
Charleston, S.C.	7 36a	12 03p		2	510/849	ATL	S/
Charlotte, N.C.	10 53a 4 45p	3 39p 9 39p		3 2	514/136 856/144	ATL ATL	
Chattanooga, Tenn.	7 36a	10 50a		1	510/632	ATL	S/
Chicago, Ill.	7 00a	1 15pO	Ex Su	4	518/212	MEM	S/L
Columbia, S.C.	7 36a	11 09a		1	510/849	ATL	S/
Columbus, Ga.	3 36p	5 00p		0	716		
Detroit, Mich.	7 36a	1 05p		3	510/632	ATL	S/L
Eglin A.F.B./Fort Walton Beach, Fla.	7 00a 12 54p 1 34p	7 26a 1 20p 1 59p	Ex Su	0 0 0	518 713 517		S
Gadsden, Ala.	4 45p 4 45p	8 56p 8 56p	Ex Sa Su Sa Su Only	2 2	856/820 856/808	ATL ATL	
Golden Triangle Regional Airport, Miss.	10 53a 1 41p 4 45p	1 38p 6 06p 8 35p		3 2 2	514/135 516/819 856/145	ATL ATL ATL	
Greenville, Miss.	7 00a	12 55p	Ex Su	4	518/339	MEM	S/
Greenville/Spartanburg, S.C.	7 36a 10 53a 4 45p	12 58p 3 05p 9 00p		2 2 1	510/825 514/136 856/144	ATL ATL ATL	S/
Gulfport/Biloxi, Miss.	7 00a 1 34p	8 21a 2 58p	Ex Su	1 1	518 517		S

	Leave	Arrive	Freq.	Stops	Flight No.	Connect At	Meal
Huntsville/Decatur, Ala.	7 36a 10 53a 1 41p 4 45p	10 38a 1 18p 3 38p 8 28p		1 2 2 1	510/163 514/245 516/247 856/249	ATL ATL ATL ATL	S/
Memphis, Tenn.	7 00a 1 41p	10 23a 4 30p	Ex Su	3 2	518 516/247	ATL	S
Meridian, Miss.	7 36a 4 45p	10 32a 9 15p	Ex Sa	2 3	510/137 856/145	ATL ATL	S/
Miami, Fla.	12 54p	5 25p		3	713		
Mobile, Ala./Pascagoula, Miss.	7 36a 1 34p 1 41p 4 45p	10 22a 5 20p 5 42p 8 28p	Ex Sa	1 2 2 1	510/133 517/142 516/141 856/521	ATL GPT ATL ATL	S/
Monroe, La.	1 34p	6 46p	Ex Sa	4	517/350	MSY	
Muscle Shoals, Ala.	10 53a 4 45p	1 53p 9 07p		3 2	514/245 856/249	ATL ATL	
Nashville, Tenn.	7 36a 10 53a 1 41p	10 35a 2 59p 5 24p		2 2 1	510/632 514/165 516/169	ATL ATL ATL	S/ /S
New Orleans, La.	7 00a 1 34p	9 00a 3 45p	Ex Su	2 2	518 517		S
New York, N.Y./Newark, N.J.	3 36p	7 50pL		2	716		D
Orlando, Fla.	12 54p	4 28p		2	713		
Panama City, Fla.	8 15p	8 38p		0	523		
Pine Belt Regional Airport, Miss.	7 36a	11 14a		3	510/137	ATL	S/
St. Louis, Mo.	7 00a 1 41p	11 38a 5 38p	Ex Su	4 3	518 516/247	ATL	S
Tallahassee, Fla.	12 54p	3 19p		1	713		
Tupelo, Miss.	1 41p	6 47p		3	516/819	ATL	
Tuscaloosa, Ala.	10 53a 1 41p 4 45p	1 02p 5 28p 8 02p	Ex Sa	2 1 1	514/135 516/819 856/145	ATL ATL ATL	
Washington, D.C. (Dulles Intl Airport)	3 36p	6 38p		1	716		D

**From**  
**Eglin A.F.B., Fla.**  
**Fort Walton Beach, Fla.**

**882-5542**  
**243-3175**  
Surrounding Areas Dial  
800-241-2521  
For Eglin A.F.B. Air Freight Call  
882-5146  
For Fort Walton Beach Air  
Freight Call 243-4413

<b>To</b>							
Anniston, Ala.	5 46p 5 46p	8 27p 8 27p	Ex Sa Su Sa Su Only	1 1	519/820 519/808	ATL ATL	
Athens, Ga.	5 46p	9 09p		1	519/871	ATL	
Atlanta, Ga.	6 20a 10 29a 1 05p 2 55p 5 46p 8 50p	8 12a 12 55p 3 20p 6 43p 7 40p 11 07p		0 1 1 1 0 1	512 511 516 716/856 519 520		S DHN
Baton Rouge, La.	2 20p	6 00p	Ex Sa	2	517/350	MSY	
Birmingham, Ala.	6 20a 1 05p	9 50a 4 45p	Ex Sa	1 2	512/137 516/141	ATL ATL	S/
Charleston, S.C.	6 20a	12 03p		2	512/849	ATL	S/
Charlotte, N.C.	10 29a 5 46p	3 39p 9 39p		3 2	511/136 519/144	ATL ATL	
Chattanooga, Tenn.	6 20a	10 50a		1	512/632	ATL	S/
Chicago, Ill.	7 43a 10 55a	1 15pO 2 40pO	Ex Su	3 3	518/212 210	MEM	S/L S
Columbia, S.C.	6 20a	11 09a		1	512/849	ATL	S/
Columbus, Ga.	2 55p	5 00p		1	716		
Detroit, Mich.	6 20a	1 05p		3	512/632	ATL	S/L



	Leave	Arrive	Freq.	Stops	Flight No.	Connect At	Meal
Dothan, Ala.	1 05p	1 31p		0	516		
	2 55p	3 21p		0	716		
	8 50p	9 16p	Ex Sa	0	520		
Gadsden, Ala.	5 46p	8 56p	Ex Sa Su	2	519/820	ATL	
	5 46p	8 56p	Sa Su Only	2	519/808	ATL	
Golden Triangle Regional Airport, Miss.	10 29a	1 38p		3	511/135	ATL	
	1 05p	6 06p		3	516/819	ATL	
	5 46p	8 35p	Ex Sa	2	519/145	ATL	
Greenville, Miss.	7 43a	12 55p	Ex Su	3	518/339	MEM	S/
	2 20p	7 23p	Ex Sa	4	517/350	MSY	
Greenville/Spartanburg, S.C.	10 29a	3 05p		2	511/136	ATL	
	5 46p	9 00p		1	519/144	ATL	
Gulfport/Biloxi, Miss.	7 43a	8 21a	Ex Su	0	518		S
	2 20p	2 58p		0	517		
Huntsville/Decatur, Ala.	10 29a	1 18p		2	511/245	ATL	
	1 05p	3 38p		2	516/247	ATL	
	5 46p	8 28p		1	519/249	ATL	
Jackson/Vicksburg, Miss.	10 55a	12 11p		1	210		
Jackson, Tenn.	10 55a	2 55p		3	210/418	MEM	
Memphis, Tenn.	7 43a	10 23a	Ex Su	2	518		S
	10 55a	1 03p		2	210		
	1 05p	4 30p		3	516/247	ATL	
	2 20p	8 05p	Ex Sa	5	517/350	MSY	
Miami, Fla.	6 05a	9 59a		3	213		S
	1 45p	5 25p		2	713		
	7 40p	10 39p		1	227		
Mobile, Ala./Pascagoula, Miss.	10 55a	11 25a		0	210		
Monroe, La.	2 20p	6 46p	Ex Sa	3	517/350	MSY	
Muscle Shoals, Ala.	10 29a	1 53p		3	511/245	ATL	
	5 46p	9 07p		2	519/249	ATL	
Nashville, Tenn.	6 20a	8 29a	Ex Sa Su	1	512/161	ATL	S/S
	6 20a	10 35a		2	512/632	ATL	S/
	10 29a	2 59p		2	511/165	ATL	
	1 05p	5 24p		2	516/169	ATL	/S
New Orleans, La.	7 43a	9 00a	Ex Su	1	518		S
	10 55a	1 00p	Su Only	1	210/605	MOB	
	2 20p	3 45p		1	517		
New York, N.Y./Newark, N.J.	2 55p	7 50pL		3	716		D
Orlando, Fla.	6 05a	9 04a		2	213		S
	1 45p	4 28p		1	713		
	7 40p	9 44p		0	227		
Panama City, Fla.	6 05a	6 26a		0	213		S
	10 29a	10 50a		0	511		
St. Louis, Mo.	7 43a	11 38a	Ex Su	3	518		S
Tallahassee, Fla.	6 05a	8 06a		1	213		S
	1 45p	3 19p		0	713		
Tupelo, Miss.	1 05p	6 47p		4	516/819	ATL	
Tuscaloosa, Ala.	10 29a	1 02p		2	511/135	ATL	
	1 05p	5 28p		2	516/819	ATL	
	5 46p	8 02p	Ex Sa	1	519/145	ATL	
Washington, D.C. (Dulles Intl Airport)	2 55p	6 38p		2	716		D

From  
**Florence, Ala.**  
(See Muscle Shoals, Ala.) **383-4581**

From  
**Ft. Lauderdale, Fla.**  
(See Miami, Fla.) **800-241-2521**  
Surrounding Area Dial  
**800-241-2521**

From  
**Fort Walton Beach, Fla.**  
(See Eglin A.F.B., Fla.) **243-3175**

	Leave	Arrive	Freq.	Stops	Flight No.	Connect At	Meal
From <b>Gadsden, Ala.</b> To							<b>442-6370</b> For Air Freight Call 442-7920
	Albany, Ga.						
Albany, Ga.	6 35a	10 11a	Ex Mo Sa Su	2	810/881	ATL	S/
	6 35a	10 11a	Mo Only	2	800/881	ATL	S/
	6 35a	11 00a	Ex Mo Su	2	810/513	ATL	S/
	6 35a	11 00a	Mo Su Only	2	800/513	ATL	S/
	11 45a	4 06p		2	817/885	ATL	
Anniston, Ala.	6 35a	6 54a	Ex Mo Su	0	810		S
	6 35a	6 54a	Mo Su Only	0	800		S
	11 45a	12 04p		0	817		
Atlanta, Ga.	6 35a	8 45a	Ex Mo Su	1	810		S
	6 35a	8 45a	Mo Su Only	1	800		S
	11 45a	2 00p		1	817		
	3 46p	5 32p		0	818		
	9 06p	10 52p	Ex Sa Su	0	820		
Charleston, S.C.	6 35a	12 03p	Ex Mo Su	3	810/849	ATL	S/
	6 35a	12 03p	Mo Su Only	3	800/849	ATL	S/
Charlotte, N.C.	11 45a	3 39p		3	817/136	ATL	
Chattanooga, Tenn.	6 35a	10 50a	Ex Mo Su	2	810/632	ATL	S/
	6 35a	10 50a	Mo Su Only	2	800/632	ATL	S/
Columbia, S.C.	6 35a	11 09a	Ex Mo Su	2	810/849	ATL	S/
	6 35a	11 09a	Mo Su Only	2	800/849	ATL	S/
Columbus, Ga.	6 35a	11 31a	Ex Mo Su	2	810/823	ATL	S/
	6 35a	11 31a	Mo Su Only	2	800/823	ATL	S/
	11 45a	3 43p		2	817/225	ATL	
Detroit, Mich.	6 35a	1 05p	Ex Mo Su	4	810/632	ATL	S/L
	6 35a	1 05p	Mo Su Only	4	800/632	ATL	S/L
Dothan, Ala.	6 35a	10 32a	Ex Mo Su	3	810/513	ATL	S/
	6 35a	10 32a	Mo Su Only	3	800/513	ATL	S/
	11 45a	4 22p		2	817/855	ATL	
Eglin A.F.B./Fort Walton Beach, Fla.	6 35a	10 09a	Ex Mo Su	2	810/511	ATL	S/
	6 35a	10 09a	Mo Su Only	2	800/511	ATL	S/
Greenville/Spartanburg, S.C.	11 45a	3 05p		2	817/136	ATL	
Moultrie/Thomasville, Ga.	6 35a	12 27p	Ex Mo Su	3	810/823	ATL	S/
	6 35a	12 27p	Mo Su Only	3	800/823	ATL	S/
Nashville, Tenn.	6 35a	10 35a	Ex Mo Su	3	810/632	ATL	S/
	6 35a	10 35a	Mo Su Only	3	800/632	ATL	S/
	11 45a	2 59p		2	817/165	ATL	
Orlando, Fla.	11 45a	6 06p		5	817/225	ATL	
Panama City, Fla.	6 35a	10 50a	Ex Mo Su	3	810/511	ATL	S/
	6 35a	10 50a	Mo Su Only	3	800/511	ATL	S/
	11 45a	3 32p		3	817/225	ATL	
Tallahassee, Fla.	11 45a	5 09p		4	817/225	ATL	
Valdosta, Ga.	6 35a	12 56p	Ex Mo Su	4	810/823	ATL	S/
	6 35a	12 56p	Mo Su Only	4	800/823	ATL	S/

From  
**Golden Triangle Regional Airport, Miss.**  
**Columbus, Miss.** **328-4900**  
**Starkville, Miss.** **323-2622**  
**West Point, Miss.** **800-241-2521**  
For Columbus Air Freight Call  
**328-2200**  
For Starkville Air Freight Call  
**323-6500**  
For West Point Air Freight Call  
**494-6500**

	Leave	Arrive	Freq.	Stops	Flight No.	Connect At	Meal
To Albany, Ga.	7 09a	11 00a	Ex Su	2	130/513	ATL	S/
	1 58p	5 30p		2	134/525	ATL	
	4 40p	10 01p		2	816/857	ATL	
Athens, Ga.	7 09a	12 03p	Ex Su	2	130/825	ATL	S/
	4 40p	9 09p		2	816/871	ATL	
Atlanta, Ga.	7 09a	9 25a	Ex Su	1	130		S
	1 58p	4 15p		1	134		
	4 40p	7 30p		1	816		
Charleston, S.C.	7 09a	12 03p	Ex Su	3	130/849	ATL	S/
Charlotte, N.C.	4 40p	9 39p		3	816/144	ATL	
Chattanooga, Tenn.	7 09a	10 50a	Ex Su	2	130/632	ATL	S/



	Leave	Arrive	Freq.	Stops	Flight No.	Connect At	Meal
<b>From</b>							
<b>Golden Triangle Regional Airport, Miss. (Cont.)</b>							
<b>To</b>							
Chicago, Ill.	7 41a 7 41a 3 07p 6 22p	10 08aO 10 08aO 6 26pM 10 03pO	Ex Su Su Only	1 1 1 2	332/334 332/304 815/218 819/226	MEM MEM MEM MEM	S/B S/B /S
Columbia, S.C.	7 09a	11 09a	Ex Su	2	130/849	ATL	S/
Columbus, Ga.	7 09a 1 58p	11 31a 6 11p	Ex Su Ex Sa	2 2	130/823 134/827	ATL ATL	S/
Detroit, Mich.	7 09a	1 05p	Ex Su	4	130/632	ATL	S/L
Dothan, Ala.	7 09a 4 40p	10 32a 7 59p	Ex Su	3 2	130/513 816/523	ATL ATL	S/
Eglin A.F.B./Fort Walton Beach, Fla.	7 09a 1 58p 4 40p	10 09a 5 24p 9 15p	Ex Su	2 3 3	130/511 134/519 816/521	ATL ATL ATL	S/
Greenville, Miss.	7 41a 6 22p 6 22p	9 44a 9 15p 9 15p	Ex Sa Sa Only	1 2 2	332/333 819/353 819/303	MEM MEM MEM	S/
Greenville/Spartanburg, S.C.	7 09a 4 40p	12 58p 9 00p	Ex Su	3 2	130/825 816/144	ATL ATL	S/
Jackson, Tenn.	7 41a 6 22p	10 02a 9 25p	Ex Sa Ex Sa	1 2	332/842 819/420	MEM MEM	S/
Knoxville/Oak Ridge, Tenn.	6 22p	11 58p	Ex Sa	4	819/420	MEM	
Memphis, Tenn.	7 41a 3 07p 6 22p	8 15a 3 55p 7 29p		0 0 1	332 815 819		S
Meridian, Miss.	8 50p 9 50p	9 15p 10 15p	Ex Sa	0 0	145 355		
Miami, Fla.	7 41a 3 07p	12 58p 9 47p		3 4	332/217 815/229	MEM MEM	S/SB /D
Monroe, La.	7 41a 6 22p 6 22p	10 18a 9 53p 9 53p	Ex Sa Sa Only	2 3 3	332/333 819/353 819/303	MEM MEM MEM	S/
Moultrie/Thomasville, Ga.	7 09a 4 40p	12 27p 9 13p	Ex Su	3 2	130/823 816/829	ATL ATL	S/
Nashville, Tenn.	7 41a 6 22p	11 00a 10 10p	Ex Sa Ex Sa	2 3	332/842 819/420	MEM MEM	S/
Orlando, Fla.	7 41a 3 07p	12 04p 8 52p		2 3	332/217 815/229	MEM MEM	S/SB /D
Panama City, Fla.	7 09a 1 58p 4 40p	10 50a 4 53p 8 38p	Ex Su	3 2 3	130/511 134/519 816/523	ATL ATL ATL	S/
Pine Belt Regional Airport, Miss.	9 50p	10 55p		1	355		
St. Louis, Mo.	7 41a 3 07p 6 22p	10 00a 5 38p 9 33p	Ex Su	1 1 2	332/234 815/247 819/174	MEM MEM MEM	S/
Tri Cities, Tenn., Va.	6 22p	12 40a	Ex Sa	5	819/420	MEM	
Tupelo, Miss.	6 22p	6 47p		0	819		
Tuscaloosa, Ala.	7 09a 1 35p 1 58p 4 40p	7 29a 2 01p 2 18p 5 06p	Ex Su	0 0 0 0	130 812 134 816		S
Valdosta, Ga.	7 09a 1 58p 4 40p	12 56p 6 07p 9 42p	Ex Su	4 3 3	130/823 134/525 816/829	ATL ATL ATL	S/

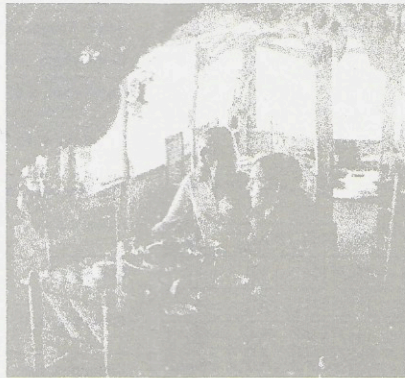
	Leave	Arrive	Freq.	Stops	Flight No.	Connect At	Meal
<b>From</b>							
<b>Grand Cayman, B.W.I.</b>							
<b>To</b>							
Birmingham, Ala.	2 30p	7 27p		2	224/226	MIA	S/D
Chicago, Ill.	2 30p	10 03pO		4	224/226	MIA	S/D
Huntsville/Decatur, Ala.	2 30p	7 59p		2	224/228	MIA	S/S
Memphis, Tenn.	2 30p	8 25p		3	224/226	MIA	S/D
Miami, Fla.	2 30p	4 45p		0	224		S
Nashville, Tenn.	2 30p	8 40p		3	224/228	MIA	S/S

	Leave	Arrive	Freq.	Stops	Flight No.	Connect At	Meal
Orlando, Fla.	2 30p	6 57p		1	224/226	MIA	S/
<b>From</b>							
<b>Greenville, Miss.</b>							
<b>To</b>							
<b>332-3191</b>							
<b>For Air Freight Call 335-5362</b>							
Atlanta, Ga.	1 40p 7 35p	7 30p 12 01a	Ex Sa	4 3	340/816 350/248	MEM MEM	
Baton Rouge, La.	9 55a 1 08p 9 30p	11 06a 2 16p 10 39p	Ex Sa	1 1 1	333 339 353		
Birmingham, Ala.	8 00a 8 00a	9 36a 9 36a	Ex Su Su Only	1 1	334/217 304/217	MEM MEM	/S /S
Chattanooga, Tenn.	7 35p	11 19p	Ex Sa	2	350/248	MEM	
Chicago, Ill.	8 00a 8 00a 7 35p	10 08aO 10 08aO 10 03pO	Ex Su Su Only Ex Sa	1 1 1	334 304 350/226	MEM	B B
Eglin A.F.B./Fort Walton Beach, Fla.	9 55a	12 47p		3	333/516	MSY	/S
Golden Triangle Regional Airport, Miss.	1 40p 7 35p	4 25p 9 37p	Ex Sa	2 1	340/816 350/355	MEM MEM	
Gulfport/Biloxi, Miss.	1 08p	4 45p		3	339/142	MSY	
Huntsville/Decatur, Ala.	8 00a 7 35p	9 33a 9 38p	Ex Su Ex Sa	1 1	334/413 350/248	MEM MEM	/S
Jackson, Tenn.	8 00a 8 00a 1 40p 7 35p	10 02a 10 02a 2 55p 9 25p	Ex Sa Su Su Only Ex Sa	1 1 1 1	334/842 304/842 340/418 350/420	MEM MEM MEM MEM	
Knoxville/Oak Ridge, Tenn.	1 40p 7 35p	5 26p 11 58p	Ex Sa	3 3	340/418 350/420	MEM MEM	
Memphis, Tenn.	8 00a 8 00a 1 40p 7 35p	8 30a 8 30a 2 10p 8 05p	Ex Su Su Only Ex Sa	0 0 0 0	334 304 340 350		
Miami, Fla.	8 00a 8 00a	12 58p 12 58p	Ex Su Su Only	3 3	334/217 304/217	MEM MEM	/SB /SB
Mobile, Ala./Pascagoula, Miss.	1 08p 1 08p	5 00p 5 20p	Ex Sa	3 4	339/638 339/142	MSY MSY	
Monroe, La.	9 55a 1 08p 9 30p 9 30p	10 18a 1 31p 9 53p 9 53p	Ex Sa Sa Only	0 0 0 0	333 339 353 303		
Montgomery, Ala.	8 00a 8 00a	9 55a 9 55a	Ex Su Su Only	1 1	334/211 304/211	MEM MEM	
Muscle Shoals, Ala.	7 35p	9 32p	Ex Sa	1	350/846	MEM	
Nashville, Tenn.	8 00a 8 00a 1 40p 7 35p	11 00a 11 00a 3 39p 10 10p	Ex Sa Su Su Only Ex Sa	2 2 2 2	334/842 304/842 340/418 350/420	MEM MEM MEM MEM	
New Orleans, La.	9 55a 1 08p 9 30p	11 39a 2 50p 11 12p	Ex Sa	2 2 2	333 339 353		
Orlando, Fla.	8 00a 8 00a	12 04p 12 04p	Ex Su Su Only	2 2	334/217 304/217	MEM MEM	/SB /SB
St. Louis, Mo.	8 00a 8 00a 7 35p	10 00a 11 38a 9 33p	Ex Su Su Only Ex Sa	1 1 1	334/234 304/508 350/174	MEM MEM MEM	
Tallahassee, Fla.	8 00a 8 00a	11 47a 11 47a	Ex Su Su Only	2 2	334/211 304/211	MEM MEM	
Tri Cities, Tenn., Va.	1 40p 7 35p	6 07p 12 40a	Ex Sa	4 4	340/418 350/420	MEM MEM	
Tuscaloosa, Ala.	1 40p	5 06p		3	340/816	MEM	

	Leave	Arrive	Freq.	Stops	Flight No.	Connect At	Meal
<b>From</b>							
<b>Greenville, S.C.</b>							
<b>To</b>							
<b>Spartanburg, S.C.</b>							
<b>242-6535</b>							
<b>583-5441</b>							
<b>For Greenville Air Freight Call 233-0173</b>							
<b>For Spartanburg Air Freight Call 585-7692</b>							
Albany, Ga.	8 45a 3 00p	11 00a 5 30p		1 2	131/513 872/525	ATL ATL	S/ /S
Anniston, Ala.	8 45a	10 57a	Th Sa Only	1	131/803	ATL	S/



# INTRODUCING SOUTHERN'S GRAND FLIGHT TO GRAND CAYMAN.



On December 4, 1974 Southern became the U.S. flag carrier providing daily round-trip service to the incredibly beautiful Cayman Islands, 500 miles south of Miami.

Our Grand Flights depart Miami at 1:45 p.m. Once aboard our DC-9 jet, the

500 mile trip takes a little over an hour. But our Grand Flight is going to make that hour a highly memorable one. Because, like every other Southern flight, this one's got only one class of service — and it definitely isn't second.

**NOBODY'S SECOND  
CLASS ON SOUTHERN.**





	Leave	Arrive	Freq.	Stops	Flight No.	Connect At	Meal
<b>From</b>							
<b>Greenville, S.C. (Cont.)</b>							
<b>To</b>							
Athens, Ga.	3 00p	3 35p		0	872		
Atlanta, Ga.	8 45a 3 00p 4 45p	9 20a 4 25p 5 20p		0 1 0	131 872 174		S
Birmingham, Ala.	8 45a 3 00p	9 50a 4 45p	Ex Sa	1 2	131/137 872/141	ATL ATL	S/ /
Charlotte, N.C.	3 15p 9 15p	3 39p 9 39p		0 0	136 144		
Chattanooga, Tenn.	8 45a	10 50a		1	131/632	ATL	S/
Columbus, Ga.	8 45a 3 00p	11 31a 6 11p	Ex Sa	1 2	131/823 872/827	ATL ATL	S/ /
Detroit, Mich.	8 45a	1 05p		3	131/632	ATL	S/L
Dothan, Ala.	8 45a	10 32a		2	131/513	ATL	S/
Eglin A.F.B./Fort Walton Beach, Fla.	8 45a 3 00p	10 09a 5 24p		1 3	131/511 872/519	ATL ATL	S/ /
Golden Triangle Regional Airport, Miss.	3 00p	6 06p		3	872/819	ATL	
Gulfport/Biloxi, Miss.	8 45a 4 45p	10 57a 6 38p		2 2	131/133 174	ATL	S/ /
Huntsville/Decatur, Ala.	8 45a	10 38a		1	131/163	ATL	S/
Memphis, Tenn.	3 00p	7 29p		5	872/819	ATL	
Meridian, Miss.	8 45a	10 32a		2	131/137	ATL	S/
Mobile, Ala./Pascagoula, Miss.	8 45a 3 00p 4 45p	10 22a 5 42p 6 03p	Ex Sa	1 3 1	131/133 872/141 174	ATL ATL	S/ /
Moultrie/Thomasville, Ga.	8 45a	12 27p		2	131/823	ATL	S/
Nashville, Tenn.	8 45a 4 45p	10 35a 5 24p		2 1	131/632 174/169	ATL ATL	S/ /S
New Orleans, La.	3 00p 4 45p	6 25p 9 15p	Ex Sa	4 3	872/141 174/717	ATL MOB	
Panama City, Fla.	8 45a 3 00p	10 50a 4 53p		2 2	131/511 872/519	ATL ATL	S/ /
Pine Belt Regional Airport, Miss.	8 45a	11 14a		3	131/137	ATL	S/
Tupelo, Miss.	3 00p	6 47p		4	872/819	ATL	
Tuscaloosa, Ala.	3 00p	5 28p		2	872/819	ATL	
Valdosta, Ga.	8 45a 3 00p	12 56p 6 07p		3 3	131/823 872/525	ATL ATL	S/ /

	Leave	Arrive	Freq.	Stops	Flight No.	Connect At	Meal
<b>From</b>							
<b>Greenwood, Miss.</b>							
<b>To</b>							
<b>800-241-2521</b> For Air Freight Call 453-1623							
Atlanta, Ga.	7 05p	12 01a	Ex Sa	4	836/248	MEM	
Birmingham, Ala.	10 45a	2 11p	Ex Sa	2	830/235	MEM	
Chattanooga, Tenn.	7 05p	11 19p	Ex Sa	3	836/248	MEM	
Chicago, Ill.	10 45a 7 05p	2 40p 10 03p	Ex Sa Ex Sa	2 2	830/210 836/226	MEM MEM	/S /S
Huntsville/Decatur, Ala.	7 05p	9 38p	Ex Sa	2	836/248	MEM	
Jackson/Vicksburg, Miss.	5 44p	6 14p	Ex Sa	0	837		
Jackson, Tenn.	7 05p	9 25p	Ex Sa	2	836/420	MEM	
Knoxville/Oak Ridge, Tenn.	7 05p	11 58p	Ex Sa	4	836/420	MEM	
Memphis, Tenn.	10 45a 7 05p	11 47a 8 07p	Ex Sa Ex Sa	1 1	830 836		/S /S
Muscle Shoals, Ala.	7 05p	9 32p	Ex Sa	2	836/846	MEM	
Nashville, Tenn.	7 05p	10 10p	Ex Sa	3	836/420	MEM	
St. Louis, Mo.	10 45a 10 45a 7 05p	12 50p 12 50p 9 33p	Ex Sa Su Su Only Ex Sa	2 2 2	830/631 830/601 836/174	MEM MEM MEM	/S /S /S
Tri Cities, Tenn., Va.	7 05p	12 40a	Ex Sa	5	836/420	MEM	

	Leave	Arrive	Freq.	Stops	Flight No.	Connect At	Meal
Tuscaloosa, Ala.	10 45a	2 01p	Ex Sa	3	830/812	MEM	
University/Oxford, Miss.	10 45a 7 05p	11 14a 7 34p	Ex Sa Ex Sa	0 0	830 836		
<b>From</b>							
<b>Gulfport, Miss.</b>							
<b>To</b>							
<b>864-2323</b> <b>864-2323</b> For Air Freight Call 864-3105							
Athens, Ga.	6 55a 6 55a 5 00p	12 03p 12 03p 9 09p	Ex Su Su Only	2 2 2	140/825 200/825 142/871	ATL ATL ATL	S/ S/ S/
Atlanta, Ga.	6 55a 6 55a 11 25a 5 00p 7 35p	9 25a 9 25a 1 53p 7 29p 11 07p	Ex Su Su Only Ex Sa	1 1 1 1 3	140 200 136 142 520		S S S S S
Baton Rouge, La.	3 20p	6 00p	Ex Sa	1	517/350	MSY	
Birmingham, Ala.	6 35a	7 52a	Ex Su	1	630		S
Charleston, S.C.	6 55a 6 55a	12 03p 12 03p	Ex Su Su Only	3 3	140/849 200/849	ATL ATL	S/ S/
Charlotte, N.C.	11 25a 5 00p	3 39p 9 39p		3 3	136 142/144	ATL	S S/
Chattanooga, Tenn.	6 55a 6 55a 8 35a 6 53p	10 50a 10 50a 1 32p 11 19p	Ex Su Su Only Ex Su Ex Sa	2 2 2 2	140/632 200/632 518/412 174/248	ATL ATL MEM MEM	S/ S/ S/S S/
Chicago, Ill.	8 35a 6 53p	1 15p 10 03p	Ex Su	2 1	518/212 174/226	MEM MEM	S/L S/
Columbia, S.C.	6 55a 6 55a	11 09a 11 09a	Ex Su Su Only	2 2	140/849 200/849	ATL ATL	S/ S/
Columbus, Ga.	11 40a	1 55p		1	321		
Detroit, Mich.	6 35a 6 55a 6 55a 3 20p	11 05a 1 05p 1 05p 9 15p	Ex Su Ex Su Su Only Ex Sa	3 4 4 4	630 140/632 200/632 517/638	ATL ATL ATL MSY	SB S/L S/L /D
Dothan, Ala.	7 35p	9 16p	Ex Sa	2	520		
Eglin A.F.B./Fort Walton Beach, Fla.	5 00p 7 35p	7 20p 8 35p	Ex Sa	1 1	142/227 520	MOB	
Greenville, Miss.	3 20p	7 23p	Ex Sa	3	517/350	MSY	
Greenville/Spartanburg, S.C.	6 55a 6 55a 11 25a 5 00p	12 58p 12 58p 3 05p 9 00p	Ex Su Su Only	3 3 2 2	140/825 200/825 136 142/144	ATL ATL ATL	S/ S/ S S/
Huntsville/Decatur, Ala.	6 53p	9 38p	Ex Sa	1	174/248	MEM	S/
Jackson, Tenn.	6 53p	9 25p	Ex Sa	1	174/420	MEM	S/
Knoxville/Oak Ridge, Tenn.	8 35a 6 53p	2 10p 11 58p	Ex Su Ex Sa	3 3	518/412 174/420	MEM MEM	S/S S/
Memphis, Tenn.	6 35a 8 35a 6 53p	8 53a 10 23a 7 48p	Ex Su Ex Su	2 2 0	630/234 518 174	BHM	S/S S S
Miami, Fla.	6 35a 11 40a 5 00p	12 58p 7 00p 10 39p	Ex Su	3 5 3	630/217 321/225 142/227	BHM CSG MOB	S/B S S
Mobile, Ala./Pascagoula, Miss.	6 35a 6 55a 6 55a 11 25a 11 40a 5 00p 7 35p	6 55a 7 15a 7 15a 11 45a 12 00n 5 20p 7 55p	Ex Su Ex Su Su Only Ex Sa	0 0 0 0 0 0 0	630 140 200 136 321 142 520		S S S S S S S
Monroe, La.	3 20p	6 46p	Ex Sa	2	517/350	MSY	
Muscle Shoals, Ala.	6 53p	9 32p		1	174/846	MEM	S/
Nashville, Tenn.	6 35a 6 55a 6 55a 11 25a 6 53p	8 40a 10 35a 10 35a 2 59p 10 10p	Ex Su Ex Su Su Only Ex Sa	2 3 3 2 2	630 140/632 200/632 136/165 174/420	ATL ATL ATL ATL MEM	S S/ S/ S/ S/
New Orleans, La.	8 35a 3 20p 8 50p	9 00a 3 45p 9 15p	Ex Su	0 0 0	518 517 717		S
New York, N.Y./Newark, N.J.	11 40a	4 40pL		3	321		L



	Leave	Arrive	Freq.	Stops	Flight No.	Connect At	Meal
<b>Orlando, Fla.</b>	6 35a 5 00p	12 04p 9 44p	Ex Su	2 2	630/217 142/227	BHM MOB	S/B
<b>St. Louis, Mo.</b>	6 35a 8 35a 6 53p	10 00a 11 38a 9 33p	Ex Su Ex Su	3 2	630/234 518 174	BHM	S/S S S
<b>Tri Cities, Tenn., Va.</b>	8 35a 6 53p	2 49p 12 40a	Ex Su Ex Sa	4 4	518/412 174/420	MEM MEM	S/S S/
<b>Tupelo, Miss.</b>	6 53p	8 40p	Ex Sa	1	174/828	MEM	S/
<b>Washington, D.C. (Dulles Intl Airport)</b>	11 40a	3 33p		2	321		L

From  
**Hattiesburg, Miss.**  
 (See Pine Belt Regional Airport, Miss.)

**800-241-2521**

From  
**Huntsville, Ala.  
 Decatur, Ala.**

**539-7701  
 353-2690**

For Huntsville Air Freight Call  
**772-3070**  
 For Decatur Air Freight Call  
**355-7870**

To	Leave	Arrive	Freq.	Stops	Flight No.	Connect At	Meal
<b>Albany, Ga.</b>	7 10a 7 10a 2 45p 6 00p	10 11a 11 00a 5 30p 10 01p	Ex Sa Su Ex Sa	1 1 1 1	162/881 162/513 242/525 244/857	ATL ATL ATL ATL	S/ S/ S/
<b>Athens, Ga.</b>	6 00p	9 09p	Ex Sa	1	244/871	ATL	
<b>Atlanta, Ga.</b>	7 10a 11 00a 2 45p 6 00p 9 53p	8 50a 12 40p 4 25p 7 40p 12 01a	Ex Sa Ex Sa	0 0 0 0 1	162 164 242 244 248		S
<b>Baton Rouge, La.</b>	7 37a 9 43a 10 37a	11 06a 12 05p 2 16p	Ex Su Ex Su	3 3 3	241/333 413/340 212/339	MEM MSY MEM	S/ S/
<b>Charleston, S.C.</b>	7 10a	12 03p		2	162/849	ATL	S/
<b>Charlotte, N.C.</b>	11 00a 6 00p	3 39p 9 39p	Ex Sa	2 2	164/136 244/144	ATL ATL	
<b>Chattanooga, Tenn.</b>	9 53p	11 19p	Ex Sa	0	248		
<b>Chicago, Ill.</b>	7 37a 10 37a 3 52p	10 08a 1 15p 6 26p	Ex Su Ex Su	1 1 1	241/334 212 247/218	MEM MEM	S/B L /S
<b>Columbia, S.C.</b>	7 10a	11 09a		1	162/849	ATL	S/
<b>Columbus, Ga.</b>	7 10a 2 45p	11 31a 6 11p	Ex Sa	1 1	162/823 242/827	ATL ATL	S/ S/
<b>Detroit, Mich.</b>	7 10a 3 34p	1 05p 6 25p	Ex Sa	3 1	162/632 636	ATL	S/L S
<b>Dothan, Ala.</b>	7 10a 11 00a 6 00p	10 32a 1 24p 7 59p	Ex Sa	2 1 1	162/513 164/517 244/523	ATL ATL ATL	S/
<b>Eglin A.F.B./Fort Walton Beach, Fla.</b>	7 10a 11 00a 2 45p 6 00p	10 09a 1 59p 5 24p 9 15p	Ex Sa	1 2 2 2	162/511 164/517 242/519 244/521	ATL ATL ATL ATL	S/ S/
<b>Grand Cayman, B.W.I.</b>	8 46a	2 00p		2	215/221	MIA	B/S
<b>Greenville, Miss.</b>	7 37a 10 37a	9 44a 12 55p	Ex Su	1 1	241/333 212/339	MEM MEM	S/ S/
<b>Greenville/Spartanburg, S.C.</b>	11 00a 6 00p	3 05p 9 00p	Ex Sa	1	164/136 244/144	ATL ATL	
<b>Greenwood, Miss.</b>	7 37a	10 24a	Ex Sa Su	2	241/833	MEM	S/
<b>Gulfport/Biloxi, Miss.</b>	7 37a	11 25a	Ex Su	2	241/321	MEM	S/
<b>Jackson/Vicksburg, Miss.</b>	3 52p	5 53p		1	247/227	MEM	
<b>Jackson, Tenn.</b>	7 37a	10 02a	Ex Sa Su	1	241/842	MEM	S/
<b>Knoxville/Oak Ridge, Tenn.</b>	8 14p	11 58p	Ex Sa	1	228/420	BNA	
<b>Memphis, Tenn.</b>	7 37a 10 37a 3 52p	8 15a 11 15a 4 30p	Ex Su	0 0 0	241 212 247		S
<b>Meridian, Miss.</b>	7 10a 6 00p	10 32a 9 15p	Ex Sa	2 3	162/137 244/145	ATL ATL	S/ S/

	Leave	Arrive	Freq.	Stops	Flight No.	Connect At	Meal
<b>Miami, Fla.</b>	8 46a 3 52p	12 03p 9 47p		1 4	215 247/229	MEM	B /D
<b>Mobile, Ala./Pascagoula, Miss.</b>	7 10a 9 43a 2 45p 2 45p 3 52p 6 00p	10 22a 10 35a 5 42p 6 03p 6 36p 8 28p	Ex Su Ex Sa	1 0 2 1 2 1	162/133 413 242/141 242/174 247/227 244/521	ATL ATL ATL MEM ATL	S/ S/
<b>Monroe, La.</b>	7 37a 10 37a	10 18a 1 31p	Ex Su	2 2	241/333 212/339	MEM MEM	S/ S/
<b>Moultrie/Thomasville, Ga.</b>	7 10a 6 00p	12 27p 9 13p	Ex Sa	2 1	162/823 244/829	ATL ATL	S/ S/
<b>Muscle Shoals, Ala.</b>	1 33p 8 47p	1 53p 9 07p		0 0	245 249		
<b>Nashville, Tenn.</b>	7 10a 2 45p 3 34p 8 14p	10 35a 5 24p 4 00p 8 40p	Ex Sa	2 1 0 0	162/632 242/169 636 228	ATL ATL	S/ /S
<b>New Orleans, La.</b>	7 37a 9 43a 10 37a 12 45p	10 08a 11 15a 2 50p 1 45p	Ex Su Ex Su Ex Su	1 4 1 0	241/321 413 212/339 635	MEM MEM	S/ S
<b>Orlando, Fla.</b>	8 46a	11 08a		0	215		B
<b>Panama City, Fla.</b>	7 10a 2 45p 6 00p	10 50a 4 53p 8 38p	Ex Sa	2 1 2	162/511 242/519 244/523	ATL ATL ATL	S/ S/
<b>St. Louis, Mo.</b>	7 37a 10 37a 10 37a 3 52p	10 00a 12 50p 12 50p 5 38p	Ex Su Ex Su Su Only	1 1 1 1	241/234 212/631 212/601 247	MEM MEM MEM	S/ /S /S
<b>Tri Cities, Tenn., Va.</b>	8 14p	12 40a	Ex Sa	2	228/420	BNA	
<b>University/Oxford, Miss.</b>	7 37a	9 45a	Ex Sa Su	1	241/833	MEM	S/
<b>Valdosta, Ga.</b>	7 10a 2 45p 6 00p	12 56p 6 07p 9 42p	Ex Sa	3 2 2	162/823 242/525 244/829	ATL ATL ATL	S/ S/

From  
**Jackson, Miss.  
 Vicksburg, Miss.**  
 To

**948-7567  
 800-241-2521**  
 For Air Freight Call 939-5323

<b>Albany, Ga.</b>	4 07p	10 01p	Ex Sa	3	244/857	ATL	
<b>Athens, Ga.</b>	4 07p	9 09p	Ex Sa	3	244/871	ATL	
<b>Atlanta, Ga.</b>	4 07p 6 05p	7 40p 11 07p	Ex Sa Ex Sa	2 3	244 227/520	MOB	
<b>Baton Rouge, La.</b>	4 25p	6 00p	Ex Sa	1	345/350	MSY	
<b>Charlotte, N.C.</b>	4 07p	9 39p	Ex Sa	4	244/144	ATL	
<b>Chattanooga, Tenn.</b>	6 25p	11 19p	Ex Sa	4	836/248	MEM	
<b>Chicago, Ill.</b>	12 25p 4 07p 6 25p	2 40p 6 26p 10 03p	Ex Sa Ex Sa	1 1 3	210 244/218 836/226	MEM MEM	S /S
<b>Dothan, Ala.</b>	4 07p 6 05p	7 59p 9 16p	Ex Sa Ex Sa	3 2	244/523 227/520	ATL MOB	
<b>Eglin A.F.B./Fort Walton Beach, Fla.</b>	6 05p	7 20p		1	227		
<b>Greenville/Spartanburg, S.C.</b>	4 07p	9 00p	Ex Sa	3	244/144	ATL	
<b>Greenwood, Miss.</b>	6 25p	6 55p	Ex Sa	0	836		
<b>Gulfport/Biloxi, Miss.</b>	6 05p	8 37p		1	227/717	MOB	
<b>Huntsville/Decatur, Ala.</b>	4 07p 6 25p	5 48p 9 38p	Ex Sa Ex Sa	1 3	244 836/248	MEM	
<b>Jackson, Tenn.</b>	12 25p 6 25p	2 55p 9 25p	Ex Sa	1 3	210/418 836/420	MEM MEM	
<b>Jacksonville, Fla.</b>	12 25p	4 25p		2	210/235	MEM	
<b>Knoxville/Oak Ridge, Tenn.</b>	12 25p 6 25p	5 26p 11 58p	Ex Sa	3 5	210/418 836/420	MEM MEM	
<b>Memphis, Tenn.</b>	12 25p 4 07p 6 25p	1 03p 4 45p 8 07p	Ex Sa Ex Sa	0 0 2	210 244 836		



	Leave	Arrive	Freq.	Stops	Flight No.	Connect At	Meal
<b>From Jackson, Miss. (Cont.)</b>							
To							
Miami, Fla.	4 07p 6 05p	9 47p 10 39p	Ex Sa	4 3	244/229 227	MEM	/D
Mobile, Ala./Pascagoula, Miss.	6 05p	6 36p		0	227		
Moultrie/Thomasville, Ga.	4 07p	9 13p	Ex Sa	3	244/829	ATL	
Muscle Shoals, Ala.	6 25p	9 32p	Ex Sa	3	836/846	MEM	
Nashville, Tenn.	12 25p 6 25p	3 39p 10 10p	Ex Sa	2 4	210/418 836/420	MEM MEM	
New Orleans, La.	4 25p 6 05p	5 00p 9 15p		0 2	345 227/717	MOB	
Orlando, Fla.	6 05p	9 44p		2	227		
Panama City, Fla.	4 07p	8 38p	Ex Sa	4	244/523	ATL	
St. Louis, Mo.	4 07p 6 25p	7 03p 9 33p	Ex Sa Ex Sa	1 3	244/238 836/174	MEM MEM	
Tri Cities, Tenn., Va.	12 25p	6 07p		4	210/418	MEM	
Tupelo, Miss.	12 25p 12 25p	1 55p 3 50p	Ex Sa Su	1	210/814 210/816	MEM MEM	
University/Oxford, Miss.	6 25p	7 34p	Ex Sa	1	836		
Valdosta, Ga.	4 07p	9 42p	Ex Sa	4	244/829	ATL	

**From Jackson, Tenn.**  
To

**422-5416**  
For Air Freight Call 422-2962

Atlanta, Ga.	3 09p 7 40p	7 24p 12 01a	Ex Sa	1 3	418/523 417/248	BNA MEM	/S
Baton Rouge, La.	8 00a 7 40p	11 06a 10 39p	Ex Sa	3 3	411/333 417/353	MEM MEM	S/
Birmingham, Ala.	8 00a 12 13p	9 36a 2 11p	Ex Sa	1	411/217 847/235	MEM MEM	S/S
Chicago, Ill.	8 00a 8 00a 12 13p 7 40p	10 08a 10 08a 2 40p 10 03p	Ex Su Su Only Ex Sa Ex Sa	1 1 1 1	411/334 411/304 847/210 417/226	MEM MEM MEM MEM	S/B S/B /S
Detroit, Mich.	3 09p 3 09p	6 25p 7 25p	Ex Sa Sa Only	1 1	418/636 418/606	BNA BNA	/S /D
Golden Triangle Regional Airport, Miss.	7 40p	9 37p	Ex Sa	1	417/355	MEM	
Greenville, Miss.	8 00a 7 40p	9 44a 9 15p	Ex Sa	1 1	411/333 417/353	MEM MEM	S/
Greenwood, Miss.	8 00a	10 24a	Ex Sa	2	411/833	MEM	S/
Gulfport/Biloxi, Miss.	8 00a 12 13p	11 25a 4 45p	Ex Sa	2 2	411/321 847/142	MEM MEM	S/
Huntsville/Decatur, Ala.	8 00a 10 15a 7 40p	9 33a 12 31p 9 38p	Ex Su Ex Sa Su Ex Sa	1 1 1	411/413 842/635 417/248	MEM BNA MEM	S/S
Jacksonville, Fla.	12 13p	4 25p	Ex Sa	2	847/235	MEM	
Knoxville/Oak Ridge, Tenn.	3 09p 9 40p	5 26p 11 58p	Ex Sa	1 1	418 420		
Memphis, Tenn.	8 00a 12 13p 7 40p	8 25a 12 45p 8 05p	Ex Sa Ex Sa Ex Sa	0 0 0	411 847 417		S
Meridian, Miss.	7 40p	10 15p	Ex Sa	2	417/355	MEM	
Miami, Fla.	8 00a	12 58p		3	411/217	MEM	S/SB
Mobile, Ala./Pascagoula, Miss.	8 00a 8 00a 12 13p	10 35a 12 00n 5 20p	Ex Su Ex Su Ex Sa	2 3 3	411/413 411/321 847/142	MEM MEM MEM	S/S S/
Monroe, La.	8 00a 7 40p	10 18a 9 53p	Ex Sa	2 2	411/333 417/353	MEM MEM	S/
Montgomery, Ala.	8 00a	9 55a		1	411/211	MEM	S/
Muscle Shoals, Ala.	7 40p	9 32p	Ex Sa	1	417/846	MEM	
Nashville, Tenn.	10 15a 3 09p 9 40p	11 00a 3 39p 10 10p	Ex Sa Ex Sa	0 0 0	842 418 420		

	Leave	Arrive	Freq.	Stops	Flight No.	Connect At	Meal
<b>New Orleans, La.</b>							
	8 00a 12 13p 7 40p	10 08a 3 48p 11 12p	Ex Sa Ex Sa	1 4 4	411/321 847/142 417/353	MEM MEM MEM	S/
Orlando, Fla.	8 00a	12 04p		2	411/217	MEM	S/SB
Pine Belt Regional Airport, Miss.	7 40p	10 55p	Ex Sa	3	417/355	MEM	
St. Louis, Mo.	8 00a 7 40p	10 00a 9 33p	Ex Su Ex Sa	1 1	411/234 417/174	MEM MEM	S/
Tallahassee, Fla.	8 00a	11 47a		2	411/211	MEM	S/
Tri Cities, Tenn., Va.	3 09p 9 40p	6 07p 12 40a	Ex Sa	2 2	418 420		
Tupelo, Miss.	12 13p	1 55p	Ex Sa Su	1	847/814	MEM	
University/Oxford, Miss.	8 00a	9 45a	Ex Sa	1	411/833	MEM	S/

**From Jacksonville, Fla.**  
To

**757-2381**  
Surrounding Areas Dial  
800-241-2521  
For Air Freight Call 757-2386

Birmingham, Ala.	7 50a 5 00p	7 50a 5 00p	Ex Su	0 0	234 238		B S
Detroit, Mich.	7 50a 5 00p	11 05a 9 15p	Ex Su Ex Sa	2 2	234/630 238/638	BHM BHM	B/SB S/D
Greenville, Miss.	7 50a	9 44a	Ex Su	2	234/333	MEM	BS/
Jackson, Tenn.	7 50a	10 02a	Ex Sa Su	2	234/842	MEM	BS/
Memphis, Tenn.	7 50a 5 00p	8 53a 5 55p	Ex Su	1 1	234 238		BS S
Meridian, Miss.	7 50a	10 32a	Ex Su	1	234/137	BHM	B/
Mobile, Ala./Pascagoula, Miss.	7 50a	9 27a	Ex Su	1	234/631	BHM	B/S
Montgomery, Ala.	5 00p	6 36p		1	238/229	BHM	S/
Nashville, Tenn.	7 50a 5 00p	8 40a 6 45p	Ex Su Ex Sa	1 1	234/630 238/638	BHM BHM	B/S S/
New Orleans, La.	7 50a	10 10a	Ex Su	2	234/631	BHM	B/S
Pine Belt Regional Airport, Miss.	7 50a	11 14a	Ex Su	2	234/137	BHM	B/
St. Louis, Mo.	7 50a 5 00p	10 00a 7 03p	Ex Su	2 2	234 238		BS S

**From Johnson City, Tenn.**  
(See Tri-cities)

**928-9226**

**From Kingsport, Tenn.**  
(See Tri-cities)

**323-4144**

**From Knoxville, Tenn.**  
**Oak Ridge, Tenn.**  
To

**577-7561**  
**800-241-2521**  
For Air Freight Call 577-6555

Atlanta, Ga.	7 27a	10 29a	Ex Sa Su	1	411/168	BNA	S/S
Baton Rouge, La.	7 27a 7 12p	11 06a 10 39p	Ex Sa	5 5	411/333 417/353	MEM MEM	S/
Birmingham, Ala.	7 27a 7 12p	8 30a 8 10p	Ex Su Ex Sa	1 1	411/631 417/637	BNA BNA	S/S
Chattanooga, Tenn.	3 53p	4 18p		0	415		
Chicago, Ill.	7 27a 7 27a 3 53p 7 12p	10 08a 10 08a 6 26p 10 03p	Ex Su Su Only Ex Sa	3 3 2 3	411/334 411/304 415/218 417/226	MEM MEM MEM MEM	S/B S/B /S
Detroit, Mich.	7 27a 7 12p	11 05a 9 15p	Ex Su Ex Sa	1 1	411/630 417/638	BNA BNA	S/B /D
Golden Triangle Regional Airport, Miss.	7 12p	9 37p	Ex Sa	3	417/355	MEM	
Greenville, Miss.	7 27a 7 12p	9 44a 9 15p	Ex Sa	3 3	411/333 417/353	MEM MEM	S/
Greenwood, Miss.	7 27a	10 24a	Ex Sa	4	411/833	MEM	S/



# MAGNA CHARTER.

When it comes to charter flights, we're big on service.

Bigger, in fact, than just about any other airline you can name.

Because whether you're flying anywhere in the Continental

USA, Canada or the Bahamas, we'll get you there in grand style.

To start with, we'll assign a Charter Coordinator to your flight.

Someone who really knows his way around

when it comes to pleasing you and making sure your trip goes as planned.

Plus you'll find things are roomier aboard our one class

DC-9 jets.

But that's just a few of the advantages you'll have aboard Southern.

To get all the details, including rates, just give us a call.

It could be the beginning of a truly magnanimous relationship.

**NOBODY'S SECOND CLASS ON SOUTHERN.**

Southern Airways Charter Department, Hartsfield Atlanta International Airport, Atlanta, Georgia 30320, (404) 767-0644.





	Leave	Arrive	Freq.	Stops	Flight No.	Connect At	Meal
From <b>Knoxville, Tenn. (Cont.)</b> To							
Gulfport/Biloxi, Miss.	7 27a 7 12p	11 25a 9 47p	Ex Sa	4 3	411/321 417/637	MEM BNA	S/ /
Huntsville/Decatur, Ala.	7 27a	8 36a		1	411/215	BNA	S/
Jackson/Vicksburg, Miss.	3 53p	5 53p		2	415/227	MEM	
Jackson, Tenn.	7 27a 7 12p	7 45a 7 30p	Ex Sa	1 1	411 417		S
Memphis, Tenn.	7 27a 3 53p 7 12p	8 25a 4 20p 8 05p	Ex Sa	2 1 2	411 415 417		S
Meridian, Miss.	7 12p	10 15p	Ex Sa	4	417/355	MEM	
Miami, Fla.	7 27a	12 03p		3	411/215	BNA	S/B
Mobile, Ala./Pascagoula, Miss.	7 27a 7 27a 3 53p 7 12p	9 27a 12 00n 6 36p 9 12p	Ex Su Ex Sa	2 5 3 2	411/631 411/321 415/227 417/637	BNA MEM MEM BNA	S/S S/ /
Monroe, La.	7 27a 7 12p	10 18a 9 53p	Ex Sa	4 4	411/333 417/353	MEM MEM	S/ /
Muscle Shoals, Ala.	7 12p	9 32p	Ex Sa	3	417/846	MEM	
Nashville, Tenn.	7 27a 7 12p	7 00a 6 45p	Ex Sa	0 0	411 417		S
New Orleans, La.	7 27a	10 08a		3	411/321	MEM	S/
Orlando, Fla.	7 27a	11 08a		2	411/215	BNA	S/B
Pine Belt Regional Airport, Miss.	7 12p	10 55p	Ex Sa	5	417/355	MEM	
St. Louis, Mo.	7 27a 3 53p 7 12p	10 00a 5 38p 9 33p	Ex Su Ex Sa	3 2 3	411/234 415/247 417/174	MEM MEM MEM	S/ /
Tri Cities, Tenn., Va.	12 13a 2 22p 5 40p	12 40a 2 49p 6 07p	Ex Su	0 0 0	420 412 418		
University/Oxford, Miss.	7 27a	9 45a	Ex Sa	3	411/833	MEM	S/

From  
**Laurel, Miss.**  
(See Pine Belt Regional Airport, Miss.)

**800-241-252**

From  
**Memphis, Tenn.**  
To

**525-7681**  
For Air Freight Call 397-1416

Albany, Ga.	3 15p 5 10p	10 01p 10 01p	Ex Sa	4 2	816/857 244/857	ATL ATL	
Athens, Ga.	3 15p 5 10p	9 09p 9 09p	Ex Sa	4 2	816/871 244/871	ATL ATL	†
Atlanta, Ga.	8 55a 12 30p 2 30p 3 15p 5 10p 9 00p	12 40p 4 15p 7 24p 7 30p 7 40p 12 01a	Ex Su Ex Sa	1 2 2 3 1 2	413/164 812/134 418/523 816 244 248	HSV GTR BNA	S/ /S
Baton Rouge, La.	9 14a 12 25p 3 35p 8 45p	11 06a 2 16p 6 00p 10 39p	Ex Sa Ex Sa	2 2 2 2	333 339 345/350 353	MSY	
Birmingham, Ala.	8 55a 1 30p 5 15p 7 30p	9 36a 2 11p 5 56p 8 10p	Ex Sa	0 0 0 0	217 235 229 237		S
Charlotte, N.C.	3 15p 5 10p	9 39p 9 39p	Ex Sa	5 3	816/144 244/144	ATL ATL	
Chattanooga, Tenn.	11 45a 9 00p	1 32p 11 19p	Ex Sa	0 1	412 248		S
Chicago, Ill.	8 50a 8 50a 11 55a 1 22p 5 10p 8 45p	10 08a 10 08a 1 15p 2 40p 6 26p 10 03p	Ex Su Su Only	0 0 0 0 0 0	334 304 212 210 218 226	B B L S S	
Detroit, Mich.	2 30p 2 30p	6 25p 7 25p	Ex Sa Sa Only	2 2	418/636 418/606	BNA BNA	/S /D

	Leave	Arrive	Freq.	Stops	Flight No.	Connect At	Meal
Dothan, Ala.	3 15p 5 10p	7 59p 7 59p	Ex Sa	4 2	816/523 244/523	ATL ATL	
Eglin A.F.B./Fort Walton Beach, Fla.	9 14a 5 15p	12 47p 7 20p		4 2	333/516 227	MSY	/S
Golden Triangle Regional Airport, Miss.	12 30p 3 15p 9 05p	1 20p 4 25p 9 37p		0 1 0	812 816 355		
Grand Cayman, B.W.I.	8 55a	2 00p		3	217/221	MIA	SB/S
Greenville, Miss.	9 14a 12 25p 8 45p 8 45p	9 44a 12 55p 9 15p 9 15p	Ex Sa Sa Only	0 0 0 0	333 339 353 303		
Greenville/Spartanburg, S.C.	3 15p 5 10p	9 00p 9 00p	Ex Sa	4 2	816/144 244/144	ATL ATL	
Greenwood, Miss.	9 20a 4 30p	10 24a 5 34p	Ex Sa Ex Sa	1 1	833 837		
Gulfport/Biloxi, Miss.	9 10a 2 50p 3 35p 5 15p 7 30p	11 25a 4 45p 7 25p 8 37p 9 47p	Ex Sa Ex Sa	1 2 2 2 2	321 142 345/520 227/717 237/637	MSY MOB BHM	
Huntsville/Decatur, Ala.	8 55a 5 10p 9 00p	9 33a 5 48p 9 38p	Ex Su Ex Sa Ex Sa	0 0 0	413 244 248		S
Jackson/Vicksburg, Miss.	3 35p 4 30p 5 15p	4 13p 6 14p 5 53p	Ex Sa	0 2 0	345 837 227		
Jackson, Tenn.	9 30a 2 30p 9 00p	10 02a 2 55p 9 25p	Ex Sa Ex Sa	0 0 0	842 418 420		
Jacksonville, Fla.	1 30p 7 30p	4 25p 10 25p	Ex Sa	1 1	235 237		
Knoxville/Oak Ridge, Tenn.	11 45a 2 30p 9 00p	2 10p 5 26p 11 58p	Ex Sa	1 2 2	412 418 420		S
Meridian, Miss.	9 05p	10 15p		1	355		
Miami, Fla.	8 55a 9 00a 5 15p 5 15p	12 58p 1 38p 9 47p 10 39p		2 3 3 4	217 211 229 227		SB S D
Mobile, Ala./Pascagoula, Miss.	8 55a 9 10a 2 50p 2 50p 5 15p 7 30p	10 35a 12 00n 5 00p 5 20p 6 36p 9 12p	Ex Su Ex Sa Ex Sa	1 2 2 1 1	413 321 142/638 142 227 237/637	MSY BHM	S
Monroe, La.	9 14a 12 25p 8 45p 8 45p	10 18a 1 31p 9 53p 9 53p	Ex Sa Sa Only	1 1 1 1	333 339 353 303		
Montgomery, Ala.	9 00a 5 15p	9 55a 6 36p		0 1	211 229		
Moultrie/Thomasville, Ga.	3 15p 5 10p	9 13p 9 13p	Ex Sa	4 2	816/829 244/829	ATL ATL	
Muscle Shoals, Ala.	8 45p	9 32p		0	846		
Nashville, Tenn.	9 30a 2 30p 9 00p	11 00a 3 39p 10 10p	Ex Sa Ex Sa	1 1 1	842 418 420		
New Orleans, La.	8 55a 9 10a 9 14a 12 25p 2 50p 3 35p 5 15p 8 45p	11 15a 10 08a 11 39a 2 50p 3 48p 5 00p 9 15p 11 12p	Ex Su	2 0 3 3 0 1 3 3	413 321 333 339 142 345 227/717 353		S
Orlando, Fla.	8 55a 9 00a 5 15p 5 15p	12 04p 12 44p 8 52p 9 44p		1 2 2 3	217 211 229 227		SB S D
Panama City, Fla.	9 00a 3 15p 5 10p	12 06p 8 38p 8 38p	Ex Sa	2 5 3	211/216 816/523 244/523	TLH ATL ATL	
Pine Belt Regional Airport, Miss.	9 05p	10 55p		2	355		



	Leave	Arrive	Freq.	Stops	Flight No.	Connect At	Meal
St. Louis, Mo.	9 12a	10 00a	Ex Su	0	234		
	10 50a	11 38a	Ex Su	0	518		
	10 50a	11 38a	Su Only	0	508		
	12 02p	12 50p	Ex Su	0	631		S
	12 02p	12 50p	Su Only	0	601		S
	4 50p	5 38p		0	247		
	6 15p	7 03p		0	238		
	8 45p	9 33p		0	174		

Tallahassee, Fla.	9 00a	11 47a		1	211		
-------------------	-------	--------	--	---	-----	--	--

Tri Cities, Tenn., Va.	11 45a	2 49p		2	412		S
	2 30p	6 07p		3	418		
	9 00p	12 40a	Ex Sa	3	420		

Tupelo, Miss.	1 20p	1 55p	Ex Sa Su	0	814		
	3 15p	3 50p		0	816		
	8 05p	8 40p	Ex Sa	0	828		

Tuscaloosa, Ala.	12 30p	2 01p		1	812		
	3 15p	5 06p		2	816		
	8 05p	9 31p	Ex Sa	1	828		

University/Oxford, Miss.	9 20a	9 45a	Ex Sa	0	833		
	4 30p	4 55p	Ex Sa	0	837		

Valdosta, Ga.	3 15p	9 42p	Ex Sa	5	816/829	ATL	
	5 10p	9 42p		3	244/829	ATL	

From  
**Meridian, Miss.**  
 To  
**485-5165**  
 For Air Freight Call 483-9288

Albany, Ga.	6 30a	11 00a	Ex Su	3	130/513	ATL	S/
	12 15p	4 06p		2	138/885	ATL	

Athens, Ga.	6 30a	12 03p	Ex Su	3	130/825	ATL	S/
-------------	-------	--------	-------	---	---------	-----	----

Atlanta, Ga.	6 30a	9 25a	Ex Su	2	130		S
	12 15p	2 35p		1	138		

Birmingham, Ala.	12 15p	12 47p		0	138		
------------------	--------	--------	--	---	-----	--	--

Charleston, S.C.	6 30a	12 03p	Ex Su	4	130/849	ATL	S/
------------------	-------	--------	-------	---	---------	-----	----

Chattanooga, Tenn.	6 30a	10 50a	Ex Su	3	130/632	ATL	S/
--------------------	-------	--------	-------	---	---------	-----	----

Chicago, Ill.	7 05a	10 08aO	Ex Su	2	332/334	MEM	S/B
	7 05a	10 08aO		Su Only	2	332/304	MEM

Columbia, S.C.	6 30a	11 09a	Ex Su	3	130/849	ATL	S/
----------------	-------	--------	-------	---	---------	-----	----

Columbus, Ga.	6 30a	11 31a	Ex Su	3	130/823	ATL	S/
	12 15p	3 43p		2	138/225	ATL	

Detroit, Mich.	6 30a	1 05p	Ex Su	5	130/632	ATL	S/L
----------------	-------	-------	-------	---	---------	-----	-----

Dothan, Ala.	6 30a	10 32a	Ex Su	4	130/513	ATL	S/
	12 15p	4 22p		2	138/855	ATL	

Golden Triangle Regional Airport, Miss.	6 30a	6 55a	Ex Su	0	130		S
	7 05a	7 30a		0	332		S

Greenville/Spartanburg, S.C.	6 30a	12 58p	Ex Su	4	130/825	ATL	S/
------------------------------	-------	--------	-------	---	---------	-----	----

Huntsville/Decatur, Ala.	6 30a	10 38a	Ex Su	3	130/163	ATL	S/
	12 15p	3 38p		2	138/247	ATL	

Jackson, Tenn.	7 05a	10 02a	Ex Sa	2	332/842	MEM	S/
----------------	-------	--------	-------	---	---------	-----	----

Jacksonville, Fla.	12 15p	4 25p		1	138/235	BHM	
--------------------	--------	-------	--	---	---------	-----	--

Memphis, Tenn.	7 05a	8 15a		1	332		S
----------------	-------	-------	--	---	-----	--	---

Moultrie/Thomasville, Ga.	6 30a	12 27p	Ex Su	4	130/823	ATL	S/
---------------------------	-------	--------	-------	---	---------	-----	----

Nashville, Tenn.	6 30a	10 35a	Ex Su	4	130/632	ATL	S/
	7 05a	11 00a		3	332/842	MEM	S/
	12 15p	2 59p	2	138/165	ATL		

Orlando, Fla.	12 15p	6 06p		5	138/225	ATL	
---------------	--------	-------	--	---	---------	-----	--

Panama City, Fla.	6 30a	10 50a	Ex Su	4	130/511	ATL	S/
	12 15p	3 32p		3	138/225	ATL	

Pine Belt Regional Airport, Miss.	10 49a	11 14a		0	137		
	10 30p	10 55p		0	355		

St. Louis, Mo.	7 05a	10 00a	Ex Su	2	332/234	MEM	S/
----------------	-------	--------	-------	---	---------	-----	----

Tallahassee, Fla.	12 15p	5 09p		4	138/225	ATL	
-------------------	--------	-------	--	---	---------	-----	--

Tuscaloosa, Ala.	6 30a	7 29a	Ex Su	1	130		S
------------------	-------	-------	-------	---	-----	--	---

University/Oxford, Miss.	7 05a	9 45a	Ex Sa	2	332/833	MEM	S/
--------------------------	-------	-------	-------	---	---------	-----	----

Valdosta, Ga.	6 30a	12 56p	Ex Su	5	130/823	ATL	S/
	12 15p	6 07p		3	138/525	ATL	

From  
**Miami, Fla.**  
 To  
**379-7501**  
 Surrounding Areas Dial  
 800-241-2521  
 For Air Freight Call: 526-6562

Anniston, Ala.	10 40a	3 07p		5	216/818	ATL	
----------------	--------	-------	--	---	---------	-----	--

Atlanta, Ga.	7 30a	12 40p	Ex Sa	4	212/164	HSV	S/
	10 40a	2 35p		4	216		
	6 35p	12 01a		3	228/248	HSV	S/

Birmingham, Ala.	2 12p	3 53p		2	218		
	6 10p	7 27p		1	226		D

Chattanooga, Tenn.	6 35p	11 19p	Ex Sa	2	228/248	HSV	S/
--------------------	-------	--------	-------	---	---------	-----	----

Chicago, Ill.	7 30a	1 15pO		5	212		SL
	9 30a	2 40pO		5	210		S
	2 12p	6 26pM		4	218		S
	6 10p	10 03pO		3	226		D

Columbus, Ga.	10 40a	1 54p		3	216		
	12 50p	5 00p		4	716		

Detroit, Mich.	2 12p	7 25p	Sa Only Ex Sa	4	218/606	BHM	/D
	2 12p	9 15p		4	218/638	BHM	/D

Dothan, Ala.	12 50p	3 21p		3	716		

Eglin A.F.B./Fort Walton Beach, Fla.	9 30a	10 35a		1	210		
	12 50p	2 27p		2	716		
	7 40p	9 37p		3	230		

Golden Triangle Regional Airport, Miss.	7 30a	1 20p		5	212/812	MEM	S/
	6 10p	9 37p		3	226/355	MEM	D/

Grand Cayman, B.W.I.	1 45p	2 00p		0	221		S
----------------------	-------	-------	--	---	-----	--	---

Greenville, Miss.	7 30a	12 55p	Ex Sa Sa Only	5	212/339	MEM	S/
	6 10p	9 15p		3	226/353	MEM	D/
	6 10p	9 15p		3	226/303	MEM	D/

Gulfport/Biloxi, Miss.	6 10p	9 47p	Ex Sa	3	226/637	BHM	D/
------------------------	-------	-------	-------	---	---------	-----	----

Huntsville/Decatur, Ala.	7 30a	10 20a	Ex Sa	3	212		S
	10 40a	3 38p		5	216/247	ATL	
	2 12p	5 48p		4	218/244	MEM	

Jackson/Vicksburg, Miss.	9 30a	12 11p		3	210		
	2 12p	5 53p		4	218/227	MEM	

Jackson, Tenn.	9 30a	2 55p	Ex Sa	5	210/418	MEM	D/
	6 10p	9 25p		3	226/420	MEM	

Knoxville/Oak Ridge, Tenn.	6 35p	11 58p	Ex Sa	3	228/420	BNA	S/

Memphis, Tenn.	7 30a	11 15a		4	212		S
	9 30a	1 03p		4	210		
	2 12p	4 50p		3	218		
	6 10p	8 25p		2	226		D

Mobile, Ala./Pascagoula, Miss.	9 30a	11 25a	Ex Sa Ex Sa	2	210		
	2 12p	5 42p		3	218/141	BHM	

Monroe, La.	6 10p	9 53p	Ex Sa Sa Only	4	226/353	MEM	D/
	6 10p	9 53p		4	226/303	MEM	D/

Montgomery, Ala.	7 30a	9 17a		2	212		S
	2 12p	3 14p		1	218		

Muscle Shoals, Ala.	6 35p	9 07p		2	228/249	HSV	S/
---------------------	-------	-------	--	---	---------	-----	----

Nashville, Tenn.	10 40a	2 59p	Sa Only Ex Sa	5	216/165	ATL	
	2 12p	4 55p		3	218/606	BHM	
	2 12p	6 45p		3	218/638	BHM	
	6 35p	8 40p		2	228		S

New Orleans, La.	9 30a	1 00p	Su Only Ex Sa	3	210/605	MOB	
	2 12p	6 25p		4	218/141	BHM	

New York, N.Y./Newark, N.J.	12 50p	7 50pL		6	716		D
-----------------------------	--------	--------	--	---	-----	--	---

Orlando, Fla.	7 30a	8 17a		0	212		S
	9 30a	10 17a		0	210		
	10 40a	11 27a		0	216		
	12 50p	1 37p		0	716		
	2 12p	2 59p		0	218		
	6 10p	6 57p		0	226		
	6 35p	7 22p		0	228		
	7 40p	8 27p		0	230		

Panama City, Fla.	10 40a	12 06p		2	216		
	7 40p	9 06p		2	230		



	Leave	Arrive	Freq.	Stops	Flight No.	Connect At	Meal
From							
<b>Miami, Fla. (Cont.)</b>							
To							
St. Louis, Mo.	7 30a 7 30a 2 12p 6 10p	12 50p 12 50p 7 03p 9 33p	Ex Su Su Only	5 4 3	212/631 212/601 218/238 226/174	MEM MEM MEM	S/S S/S D/
Tallahassee, Fla.	7 30a 10 40a 12 50p 7 40p	9 20a 12 27p 2 40p 9 27p		1 1 1 1	212 216 716 230		S
Tri Cities, Tenn., Va.	6 35p	12 40a	Ex Sa	4	228/420	BNA	S/
Tupelo, Miss.	7 30a 9 30a	1 55p 3 50p	Ex Sa Su	5 5	212/814 210/816	MEM MEM	S/ MEM
Washington, D.C. (Dulles Intl Airport)	12 50p	6 38p		5	716		D

From  
**Mobile, Ala.**  
**Pascagoula, Miss.**  
 To

**342-0733**  
**800-241-2521**  
 For Air Freight Call 344-5111

Athens, Ga.	7 30a 7 30a 5 36p	12 03p 12 03p 9 09p	Ex Su Su Only	1 1 1	140/825 200/825 142/871	ATL ATL ATL	S/ S/ S/
Atlanta, Ga.	7 30a 7 30a 12 00n 5 36p 8 05p	9 25a 9 25a 1 53p 7 29p 11 07p	Ex Su Su Only Ex Sa	0 0 0 0 2	140 200 136 142 520		S S S S S
Baton Rouge, La.	10 45a	12 05p	Ex Su	1	413/340	MSY	
Birmingham, Ala.	7 10a 3 25p 5 15p	7 52a 4 07p 5 57p	Ex Su Sa Only Ex Sa	0 0 0	630 606 638		S
Charleston, S.C.	7 30a 7 30a	12 03p 12 03p	Ex Su Su Only	2 2	140/849 200/849	ATL ATL	S/ S/
Charlotte, N.C.	12 00n 5 36p	3 39p 9 39p		2 2	136 142/144	ATL	S S/
Chattanooga, Tenn.	7 30a 7 30a 6 18p	10 50a 10 50a 11 19p	Ex Su Su Only Ex Sa	1 1 3	140/632 200/632 174/248	ATL ATL MEM	S/ S/ S/
Chicago, Ill.	9 40a 11 40a 6 18p	1 15p 2 40p 10 03p	Ex Su	2 2 2	631/212 210 174/226	MEM MEM	/L S S/
Columbia, S.C.	7 30a 7 30a	11 09a 11 09a	Ex Su Su Only	1 1	140/849 200/849	ATL ATL	S/ S/
Columbus, Ga.	7 30a 7 30a 12 15p	11 31a 11 31a 1 55p	Ex Su Su Only	1 1 0	140/823 200/823 321	ATL ATL	S/ S/ S/
Detroit, Mich.	7 10a 7 30a 7 30a 3 25p 5 15p	11 05a 1 05p 1 05p 7 25p 9 15p	Ex Su Su Only Su Only Sa Only Ex Sa	2 3 3 2 2	630 140/632 200/632 606 638	ATL ATL	SB S/L S/L D D
Dothan, Ala.	7 30a 7 30a 10 45a 5 36p 8 05p	10 32a 10 32a 1 31p 7 59p 9 16p	Ex Su Su Only Ex Su Ex Sa	2 2 2 1 1	140/513 200/513 413/516 142/523 520	ATL ATL MSY ATL	S/ S/ /S S/
Eglin A.F.B./Fort Walton Beach, Fla.	6 50p 8 05p 8 45p	7 20p 8 35p 9 15p	Ex Sa	0 0 0	227 520 521		
Greenville, Miss.	10 45a	1 27p	Ex Su	3	413/340	MSY	
Greenville/Spartanburg, S.C.	7 30a 7 30a 12 00n 5 36p	12 58p 12 58p 3 05p 9 00p	Ex Su Su Only	2 2 1 1	140/825 200/825 136 142/144	ATL ATL ATL	S/ S/ S S/
Gulfport/Biloxi, Miss.	10 37a 6 18p 8 17p 9 27p	10 57a 6 38p 8 37p 9 47p		0 0 0 0	133 174 717 637		
Huntsville/Decatur, Ala.	7 30a 7 30a 12 00n 5 36p 6 18p	10 38a 10 38a 3 38p 8 28p 9 38p	Ex Su Su Only Ex Sa	1 1 1 1 2	140/163 200/163 136/247 142/249 174/248	ATL ATL ATL ATL MEM	S/ S/ S/ S/ S/

	Leave	Arrive	Freq.	Stops	Flight No.	Connect At	Meal
Jackson/Vicksburg, Miss.	11 40a	12 11p		0	210		
Jackson, Tenn.	11 40a 6 18p	2 55p 9 25p	Ex Sa	2 2	210/418 174/420	MEM MEM	S/
Knoxville/Oak Ridge, Tenn.	11 40a 6 18p	5 26p 11 58p	Ex Sa	4 4	210/418 174/420	MEM MEM	S/
Memphis, Tenn.	7 10a 9 40a 11 40a 12 30p 3 25p 6 18p	8 53a 11 38a 1 03p 4 45p 5 55p 7 48p	Ex Su Ex Su Su Only Sa Only	1 1 1 2 1 1	630/234 631 210 605/244 606/238 174	BHM BHM	S/S S
Miami, Fla.	7 10a 12 15p 3 25p 6 50p	12 58p 7 00p 9 47p 10 39p	Ex Su Sa Only	2 4 3 2	630/217 321/225 606/229 227	BHM CSG BHM	S/B /D
Monroe, La.	10 45a	12 49p	Ex Su	2	413/340	MSY	
Montgomery, Ala.	3 25p	6 36p	Sa Only	1	606/229	BHM	
Moultrie/Thomasville, Ga.	7 30a 7 30a 5 36p	12 27p 12 27p 9 13p	Ex Su Su Only	2 2 1	140/823 200/823 142/829	ATL ATL ATL	S/ S/ S/
Muscle Shoals, Ala.	6 18p	9 32p		2	174/846	MEM	S/
Nashville, Tenn.	7 10a 7 30a 7 30a 12 00n 3 25p 5 15p 6 18p	8 40a 10 35a 10 35a 2 59p 4 55p 6 45p 10 10p	Ex Su Ex Su Su Only Sa Only Ex Sa Ex Sa	1 2 2 1 1 3	630 140/632 200/632 136/165 606 638 174/420	ATL ATL ATL MEM	S S/ S/ S/ S/
New Orleans, La.	9 40a 10 45a 12 30p 5 55p 8 17p	10 10a 11 15a 1 00p 6 25p 9 15p	Ex Su Ex Su Su Only Ex Sa	0 0 0 0 1	631 413 605 141 717		
New York, N.Y./Newark, N.J.	12 15p	4 40pL		2	321		L
Orlando, Fla.	7 10a 12 15p 3 25p 6 50p	12 04p 6 06p 8 52p 9 44p	Ex Su Sa Only	1 3 2 1	630/217 321/225 606/229 227	BHM CSG BHM	S/B /D
Panama City, Fla.	12 15p	3 32p		1	321/225	CSG	
St. Louis, Mo.	7 10a 9 40a 3 25p 6 18p	10 00a 12 50p 7 03p 9 33p	Ex Su Ex Su Sa Only	2 2 2 2	630/234 631 606/238 174	BHM BHM	S/S S S
Tri Cities, Tenn., Va.	11 40a 6 18p	6 07p 12 40a	Ex Sa	5 5	210/418 174/420	MEM MEM	S/
Tupelo, Miss.	11 40a 11 40a 6 18p	1 55p 3 50p 8 40p	Ex Sa Su Ex Sa	2 2 2	210/814 210/816 174/828	MEM MEM MEM	S/
Valdosta, Ga.	7 30a 7 30a 5 36p	12 56p 12 56p 9 42p	Ex Su Su Only	3 3 2	140/823 200/823 142/829	ATL ATL ATL	S/ S/ S/
Washington, D.C. (Dulles Intl Airport)	12 15p	3 33p		1	321		L

From  
**Monroe, La.**  
 To

**325-4601**  
 For Air Freight Call 323-6571

Atlanta, Ga.	1 04p 7 00p	7 30p 12 01a	Ex Sa	5 4	340/816 350/248	MEM MEM	
Baton Rouge, La.	10 35a 1 45p 10 08p	11 06a 2 16p 10 39p	Ex Sa	0 0 0	333 339 353		
Birmingham, Ala.	7 22a 7 22a 1 45p	9 36a 9 36a 5 57p	Ex Su Su Only Ex Sa	2 2 3	334/217 304/217 339/638	MEM MEM MSY	/S /S
Chattanooga, Tenn.	7 00p	11 19p	Ex Sa	3	350/248	MEM	
Chicago, Ill.	7 22a 7 22a 7 00p	10 08a 10 08a 10 03p	Ex Su Su Only Ex Sa	2 2 2	334 304 350/226		B B
Dothan, Ala.	10 35a	1 31p		3	333/516	MSY	/S
Eglin A.F.B./Fort Walton Beach, Fla.	10 35a	12 47p		2	333/516	MSY	/S



	Leave	Arrive	Freq.	Stops	Flight No.	Connect At	Meal
Golden Triangle Regional Airport, Miss.	1 04p 7 00p	4 25p 9 37p	Ex Sa	3 2	340/816 350/355	MEM MEM	
Greenville, Miss.	7 22a 7 22a 1 04p 7 00p	7 45a 7 45a 1 27p 7 23p	Ex Su Su Only Ex Sa	0 0 0 0	334 304 340 350		
Gulfport/Biloxi, Miss.	1 45p	4 45p		2	339/142	MSY	
Huntsville/Decatur, Ala.	7 22a 7 00p	9 33a 9 38p	Ex Su Ex Sa	2 2	334/413 350/248	MEM MEM	/S
Jackson, Tenn.	7 22a 7 22a 1 04p 7 00p	10 02a 10 02a 2 55p 9 25p	Ex Sa Su Su Only Ex Sa	2 2 2 2	334/842 304/842 340/418 350/420	MEM MEM MEM MEM	
Knoxville/Oak Ridge, Tenn.	1 04p 7 00p	5 26p 11 58p	Ex Sa	4 4	340/418 350/420	MEM MEM	
Memphis, Tenn.	7 22a 7 22a 1 04p 7 00p	8 30a 8 30a 2 10p 8 05p	Ex Su Su Only Ex Sa	1 1 1 1	334 304 340 350		
Miami, Fla.	7 22a 7 22a	12 58p 12 58p	Ex Su Su Only	4 4	334/217 304/217	MEM MEM	/SB /SB
Mobile, Ala./Pascagoula, Miss.	1 45p 1 45p	5 00p 5 20p	Ex Sa	2 3	339/638 339/142	MSY MSY	
Montgomery, Ala.	7 22a 7 22a	9 55a 9 55a	Ex Su Su Only	2 2	334/211 304/211	MEM MEM	
Muscle Shoals, Ala.	7 00p	9 32p	Ex Sa	2	350/846	MEM	
Nashville, Tenn.	7 22a 7 22a 1 04p 7 00p	11 00a 11 00a 3 39p 10 10p	Ex Sa Su Su Only Ex Sa	3 3 3 3	334/842 304/842 340/418 350/420	MEM MEM MEM MEM	
New Orleans, La.	10 35a 1 45p 10 08p	11 39a 2 50p 11 12p		1 1 1	333 339 353		
Orlando, Fla.	7 22a 7 22a	12 04p 12 04p	Ex Su Su Only	3 3	334/217 304/217	MEM MEM	/SB /SB
St. Louis, Mo.	7 22a 7 22a 7 00p	10 00a 11 38a 9 33p	Ex Su Su Only Ex Sa	2 2 2	334/234 304/508 350/174	MEM MEM MEM	
Tri Cities, Tenn., Va.	1 04p 7 00p	6 07p 12 40a	Ex Sa	5 5	340/418 350/420	MEM MEM	
Tupelo, Miss.	1 04p	3 50p		2	340/816	MEM	
Tuscaloosa, Ala.	1 04p	5 06p		4	340/816	MEM	
University/Oxford, Miss.	7 22a 7 22a 1 04p	9 45a 9 45a 4 55p	Ex Sa Su Su Only Ex Sa	2 2 2	334/833 304/833 340/837	MEM MEM MEM	

From  
**Montgomery, Ala.**  
To  
**263-3827**  
For Air Freight Call 263-3819

Birmingham, Ala.	3 28p	3 53p		0	218		
Chicago, Ill.	9 42a 3 28p	1 15p 6 26p	O M	2 2	212 218		L S
Detroit, Mich.	3 28p 3 28p	7 25p 9 15p	Sa Only Ex Sa	2 2	218/606 218/638	BHM BHM	/D /D
Greenville, Miss.	9 42a	12 55p		2	212/339	MEM	
Huntsville/Decatur, Ala.	9 42a	10 20a		0	212		
Memphis, Tenn.	9 42a 3 28p	11 15a 4 50p		1 1	212 218		
Miami, Fla.	10 10a 6 51p	1 38p 9 47p		2 1	211 229		S D
Mobile, Ala./Pascagoula, Miss.	3 28p	5 42p	Ex Sa	1	218/141	BHM	
Monroe, La.	9 42a	1 31p		3	212/339	MEM	
Nashville, Tenn.	3 28p 3 28p	4 55p 6 45p	Sa Only Ex Sa	1 1	218/606 218/638	BHM BHM	
New Orleans, La.	3 28p	6 25p	Ex Sa	2	218/141	BHM	
Orlando, Fla.	10 10a 6 51p	12 44p 8 52p		1 0	211 229		S D
Panama City, Fla.	10 10a	12 06p		1	211/216	TLH	

	Leave	Arrive	Freq.	Stops	Flight No.	Connect At	Meal
St. Louis, Mo.	9 42a 9 42a 3 28p	12 50p 12 50p 7 03p	Ex Su Su Only	2 2 2	212/631 212/601 218/238	MEM MEM MEM	/S /S
Tallahassee, Fla.	10 10a	11 47a		0	211		

From  
**Moultrie, Ga.**  
**Thomasville, Ga.**  
**800-282-6565**  
**800-282-6565**  
For Moultrie Air Freight Call 985-9737

Anniston, Ala.	7 58a	10 57a	Th Sa Only	1	822/803	ATL	S/
Athens, Ga.	7 58a	12 03p		1	822/825	ATL	S/
Atlanta, Ga.	7 58a 2 30p	9 05a 3 37p		0 0	822 870		S
Birmingham, Ala.	7 58a 2 30p	9 50a 4 45p	Ex Sa	1 1	822/137 870/141	ATL ATL	S/
Chattanooga, Tenn.	7 58a	10 50a		1	822/632	ATL	S/
Columbia, S.C.	7 58a	11 09a		1	822/849	ATL	S/
Detroit, Mich.	7 58a	1 05p		3	822/632	ATL	S/L
Golden Triangle Regional Airport, Miss.	2 30p	6 06p		2	870/819	ATL	
Greenville/Spartanburg, S.C.	7 58a	12 58p		2	822/825	ATL	S/
Huntsville/Decatur, Ala.	7 58a 2 30p	10 38a 3 38p		1 1	822/163 870/247	ATL ATL	S/
Memphis, Tenn.	2 30p	4 30p		2	870/247	ATL	
Meridian, Miss.	7 58a	10 32a		2	822/137	ATL	S/
Mobile, Ala./Pascagoula, Miss.	7 58a 2 30p	10 22a 5 42p	Ex Sa	1 2	822/133 870/141	ATL ATL	S/
Nashville, Tenn.	7 58a 2 30p	10 35a 5 24p		2 1	822/632 870/169	ATL ATL	S/ /S
St. Louis, Mo.	2 30p	5 38p		3	870/247	ATL	
Tupelo, Miss.	2 30p	6 47p		3	870/819	ATL	
Tuscaloosa, Ala.	2 30p	5 28p		1	870/819	ATL	
Valdosta, Ga.	12 37p 9 23p	12 56p 9 42p		0 0	823 829		

From  
**Muscle Shoals, Ala.**  
**Florence, Ala.**  
**Sheffield, Ala.**  
**Tuscumbia, Ala.**  
To  
**383-4581**  
**383-4581**  
**383-4581**  
**383-4581**  
For Air Freight Call 383-5078

Albany, Ga.	6 35a 6 35a 2 10p	10 11a 11 00a 5 30p	Ex Sa Su	2 2 2	162/881 162/513 242/525	ATL ATL ATL	S/ S/ S/
Atlanta, Ga.	6 35a 2 10p	8 50a 4 25p		1 1	162 242		S
Baton Rouge, La.	7 10a	11 06a		3	841/333	MEM	S/
Charleston, S.C.	6 35a	12 03p		3	162/849	ATL	S/
Chicago, Ill.	7 10a 7 10a	10 08a 10 08a	O O	1 1	841/334 841/304	MEM MEM	S/B S/B
Columbia, S.C.	6 35a	11 09a		2	162/849	ATL	S/
Columbus, Ga.	6 35a 2 10p	11 31a 6 11p	Ex Sa	2 2	162/823 242/827	ATL ATL	S/
Detroit, Mich.	6 35a 2 10p	1 05p 6 25p	Ex Sa	4 2	162/632 242/636	ATL HSV	S/L /S
Dothan, Ala.	6 35a	10 32a		3	162/513	ATL	S/
Eglin A.F.B./Fort Walton Beach, Fla.	6 35a 2 10p	10 09a 5 24p		2 3	162/511 242/519	ATL ATL	S/
Greenville, Miss.	7 10a	9 44a		1	841/333	MEM	S/
Greenwood, Miss.	7 10a	10 24a	Ex Sa	2	841/833	MEM	S/



	Leave	Arrive	Freq.	Stops	Flight No.	Connect At	Meal
<b>From Muscle Shoals, Ala. (Cont.)</b>							
To							
Gulfport/Biloxi, Miss.	7 10a	11 25a		2	841/321	MEM	S/
Huntsville/Decatur, Ala.	6 35a 2 10p	6 55a 2 30p		0	162 242		S
Jackson, Tenn.	7 10a	10 02a	Ex Sa	1	841/842	MEM	S/
Memphis, Tenn.	7 10a	8 00a		0	841		S
Miami, Fla.	6 35a 7 10a	12 03p 12 58p		2 3	162/215 841/217	HSV MEM	S/B S/SB
Mobile, Ala./Pascagoula, Miss.	7 10a 7 10a	10 35a 12 00n	Ex Su	2 3	841/413 841/321	MEM MEM	S/S S/
Monroe, La.	7 10a	10 18a		2	841/333	MEM	S/
Moultrie/Thomasville, Ga.	6 35a	12 27p		3	162/823	ATL	S/
Nashville, Tenn.	2 10p	4 00p	Ex Sa	1	242/636	HSV	
New Orleans, La.	7 10a	10 08a		1	841/321	MEM	S/
Orlando, Fla.	6 35a 7 10a	11 08a 12 04p		1 2	162/215 841/217	HSV MEM	S/B S/SB
Panama City, Fla.	6 35a 2 10p	10 50a 4 53p		3 2	162/511 242/519	ATL ATL	S/ S/
St. Louis, Mo.	7 10a	10 00a	Ex Su	1	841/234	MEM	S/
University/Oxford, Miss.	7 10a	9 45a	Ex Sa	1	841/833	MEM	S/
Valdosta, Ga.	6 35a 2 10p	12 56p 6 07p		4 3	162/823 242/525	ATL ATL	S/ S/

**From Nashville, Tenn.**

**242-8381**  
Surrounding Areas Dial  
800-241-2521  
For Air Freight Call 256-6251

**To**

Albany, Ga.	2 10p 5 40p	5 30p 10 01p		2 1	633/525 523/857	ATL ATL	S/ S/
Anniston, Ala.	8 45a 5 40p 5 40p	10 57a 12 04p 8 27p 8 27p	Th Only Ex Sa Su Ex Sa Su Sa Su Only	1 2 1 1	168/803 168/817 523/820 523/808	ATL ATL ATL ATL	S/ S/ S/ S/
Athens, Ga.	8 45a 5 40p	12 03p 9 09p	Ex Sa Su	1 1	168/825 523/871	ATL ATL	S/ S/
Atlanta, Ga.	8 45a 10 45a 2 10p 3 15p 5 40p	10 29a 2 35p 4 25p 4 59p 7 24p	Ex Sa Su Su Only	0 1 1 0 0	168 605/138 633 166 523	BHM	S S S S S
Baton Rouge, La.	7 15a 7 55a 7 00p	11 06a 12 05p 10 39p	Ex Su Ex Sa	4 3 4	411/333 631/340 417/353	MEM MSY MEM	S/ S/ S/
Birmingham, Ala.	7 55a 10 45a 2 10p 7 35p	8 30a 11 20a 4 45p 8 10p	Ex Su Su Only Ex Sa Ex Sa	0 0 2 2	631 605 633/141 637		S S ATL S/
Charlotte, N.C.	5 40p	9 39p		2	523/144	ATL	S/
Chattanooga, Tenn.	2 10p	3 41p		0	633		S/
Chicago, Ill.	7 15a 7 15a 11 15a 7 00p	10 08a 10 08a 2 40p 10 03p	Ex Su Su Only Ex Sa Ex Sa	2 2 2 2	411/334 411/304 847/210 417/226	MEM MEM MEM MEM	S/B S/B S/ S/
Columbus, Ga.	8 45a 3 15p	11 31a 6 11p	Ex Sa Su Ex Sa	1 1	168/823 166/827	ATL ATL	S/ S/
Detroit, Mich.	8 55a 10 55a 4 15p 5 15p 7 05p	11 05a 1 05p 6 25p 7 25p 9 15p	Ex Su Ex Sa Sa Only Ex Sa	0 0 0 0 0	630 632 636 606 638	B L S D D	S S S S S
Dothan, Ala.	5 40p	7 59p		1	523		S
Eglin A.F.B./Fort Walton Beach, Fla.	2 10p 5 40p	5 24p 9 15p		3 2	633/519 523/521	ATL ATL	S/ S/
Gadsden, Ala.	8 45a 5 40p 5 40p	11 35a 8 56p 8 56p	Ex Sa Su Ex Sa Su Sa Su Only	1 2 2	168/817 523/820 523/808	ATL ATL ATL	S/ S/ S/

	Leave	Arrive	Freq.	Stops	Flight No.	Connect At	Meal
Golden Triangle Regional Airport, Miss.	7 00p	9 37p	Ex Sa	2	417/355	MEM	
Grand Cayman, B.W.I.	8 10a	2 00p		3	215/221	MIA	B/S
Greenville, Miss.	7 15a 7 00p	9 44a 9 15p	Ex Sa	2 2	411/333 417/353	MEM MEM	S/ S/
Greenville/Spartanburg, S.C.	8 45a 5 40p	12 58p 9 00p	Ex Sa Su	2 1	168/825 523/144	ATL ATL	S/ S/
Greenwood, Miss.	7 15a	10 24a	Ex Sa	3	411/833	MEM	S/
Gulfport/Biloxi, Miss.	7 15a 7 55a 11 15a 3 15p 7 35p	11 25a 10 57a 4 45p 6 38p 9 47p	Ex Su Ex Sa Ex Sa Ex Sa	3 2 3 2 2	411/321 631/133 847/142 166/174 637	MEM MOB MEM ATL	S/ S/ S/ S/ S/
Huntsville/Decatur, Ala.	8 10a 8 45a 12 05p 5 40p	8 36a 10 38a 12 31p 8 28p	Ex Sa Su Ex Su	0 1 0 1	215 168/163 635 523/249	ATL ATL	S/ S/
Jackson, Tenn.	7 15a 11 15a 7 00p	7 45a 12 03p 7 30p	Ex Sa Ex Sa Ex Sa	0 0 0	411 847 417		S S S
Jacksonville, Fla.	7 35p	10 25p	Ex Sa	1	637/237	BHM	
Knoxville/Oak Ridge, Tenn.	3 53p 10 25p	5 26p 11 58p	Ex Sa	0 0	418 420		S S
Memphis, Tenn.	7 15a 11 15a 7 00p	8 25a 12 45p 8 05p	Ex Sa Ex Sa Ex Sa	1 1 1	411 847 417		S S S
Meridian, Miss.	7 55a 5 40p 7 00p	10 32a 9 15p 10 15p	Ex Su Ex Sa Ex Sa	1 3 3	631/137 523/145 417/355	BHM ATL MEM	S/ S/ S/
Miami, Fla.	8 10a	12 03p		2	215		B
Mobile, Ala./Pascagoula, Miss.	7 15a 7 55a 8 10a 10 45a 11 15a 2 10p 3 15p 5 40p 7 35p	12 00n 9 27a 10 35a 12 17p 5 20p 5 42p 6 03p 8 29p 9 12p	Ex Su Ex Su Ex Su Su Only Ex Sa Ex Sa Ex Sa Ex Sa Ex Sa	4 1 1 1 4 3 1 1 1	411/321 631 215/413 605 847/142 633/141 166/174 523/521 637	MEM HSV MEM MEM ATL ATL ATL	S/ S/ S/ S/ S/ S/ S/ S/
Monroe, La.	7 15a 7 00p	10 18a 9 53p	Ex Sa	3 3	411/333 417/353	MEM MEM	S/ S/
Moultrie/Thomasville, Ga.	8 45a 5 40p	12 27p 9 13p	Ex Sa Su	2 1	168/823 523/829	ATL ATL	S/ S/
Muscle Shoals, Ala.	12 05p	1 53p	Ex Su	1	635/245	HSV	
New Orleans, La.	7 15a 7 55a 8 10a 10 45a 11 15a 12 05p 2 10p 7 00p	10 08a 10 10a 11 15a 1 00p 3 48p 1 45p 6 25p 11 12p	Ex Su Ex Su Ex Su Su Only Ex Sa Ex Su Ex Sa Ex Sa	2 2 2 2 2 4 5	411/321 631 215/413 605 847/142 635 633/141 417/353	MEM HSV MEM MEM ATL MEM	S/ S/ S/ S/ S/ S/
Orlando, Fla.	8 10a	11 08a		1	215		B
Panama City, Fla.	2 10p 5 40p	4 53p 8 38p		2 2	633/519 523	ATL	S S
Pine Belt Regional Airport, Miss.	7 55a 7 00p	11 14a 10 55p	Ex Su Ex Sa	2 4	631/137 417/355	BHM MEM	S/ S/
St. Louis, Mo.	7 15a 7 00p	10 00a 9 33p	Ex Su Ex Sa	2 2	411/234 417/174	MEM MEM	S/ S/
Tallahassee, Fla.	7 15a	11 47a		3	411/211	MEM	S/
Tri Cities, Tenn., Va.	3 53p 10 25p	6 07p 12 40a	Ex Sa	1 1	418 420		S S
Tupelo, Miss.	11 15a	1 55p	Ex Sa Su	2	847/814	MEM	
Tuscaloosa, Ala.	3 15p 5 40p	5 28p 8 02p	Ex Sa	1 1	166/819 523/145	ATL ATL	S/ S/
University/Oxford, Miss.	7 15a	9 45a	Ex Sa	2	411/833	MEM	S/
Valdosta, Ga.	8 45a 2 10p 5 40p	12 56p 6 07p 9 42p	Ex Sa Su Ex Sa Ex Sa	3 3 2	168/823 633/525 523/829	ATL ATL ATL	S/ S/ S/



# For \$25 we'll get this box from Simpson Mfg. to any of 65 cities as fast as Mr. Simpson could fly there himself.

Southern Airways' guaranteed expedited service is called Swift because that is what it is. This package 90 inches in total dimension and weighing 50 lbs. will travel much like a 6'3", 198 pound guy. Your shipment is guaranteed Swift from any Southern ticket counter to: Albany, Georgia; Anniston, Alabama; Athens, Georgia; Atlanta, Georgia; Baton Rouge, Louisiana; Biloxi, Mississippi; Birmingham, Alabama; Bristol, Tennessee; Charleston, South Carolina; Charlotte, North Carolina; Chattanooga, Tennessee; Chicago, Illinois; Columbia, South Carolina; Columbus, Georgia; Columbus, Mississippi; Decatur, Alabama; Detroit, Michigan; Dothan, Alabama; Eglin Air Force Base, Florida; Florence, Alabama; Fort Walton Beach, Florida; Gadsden, Alabama; Greenville, Mississippi;



Greenville, South Carolina; Greenwood, Mississippi; Gulfport, Mississippi; Hattiesburg, Mississippi; Huntsville, Alabama; Jackson, Mississippi; Jackson, Tennessee; Jacksonville, Florida; Johnson City, Tennessee; Kingsport, Tennessee;

Knoxville, Tennessee; Laurel, Mississippi; Memphis, Tennessee; Meridian, Mississippi; Miami, Florida; Mobile, Alabama; Monroe, Louisiana; Montgomery, Alabama; Moultrie, Georgia; Muscle Shoals, Alabama; Nashville, Tennessee; New Orleans, Louisiana; New York, New York; Oak Ridge, Tennessee; Orlando, Florida; Oxford, Mississippi; Panama City, Florida; Pascagoula, Mississippi; Sheffield, Alabama; Spartanburg, South Carolina; Starkville, Mississippi; St. Louis, Missouri; Tallahassee, Florida; Thomasville, Georgia; Tupelo, Mississippi; Tuscaloosa, Alabama; Tusculumbia, Alabama; University, Mississippi; Valdosta, Georgia; Vicksburg, Mississippi; Washington, D.C.; West Point, Mississippi;

## Swift.

For information on continuing service to another 102 cities served by Eastern and Texas International contact Southern.





From  
**Natchez, Miss.**  
 Commuter Service Operated By South Central  
 Air Transport. For Information Call 442-6963

From  
**Newark, N.J.**  
 (See New York, N.Y./Newark, N.J.)  
**800-241-9385**  
 Surrounding Areas Dial  
**800-241-9385**

From  
**New Orleans, La.**  
 To  
**525-0423**  
 For Air Freight Call 721-3429

	Leave	Arrive	Freq.	Stops	Flight No.	Connect At	Meal
Athens, Ga.	6 15a 4 20p	12 03p 9 09p	Su Only	3	200/825 142/871	ATL ATL	S/ S/
Atlanta, Ga.	5 55a 6 15a 12 00n 4 20p 7 00p	9 25a 9 25a 3 20p 7 29p 11 07p	Ex Su Su Only Ex Sa	2	630/140 2 200 2 516 2 142 4 520	GPT	S/S S S S
Baton Rouge, La.	6 00a 11 40a 5 35p	6 25a 12 05p 6 00p	Ex Su Ex Sa	0	334 340 350		S
Birmingham, Ala.	5 55a 2 40p 4 30p	7 52a 4 07p 5 57p	Ex Su Sa Only Ex Sa	2	630 606 638		S
Charleston, S.C.	6 15a	12 03p	Su Only	4	200/849	ATL	S/
Charlotte, N.C.	4 20p	9 39p		4	142/144	ATL	S/
Chattanooga, Tenn.	6 15a 9 25a 9 25a 5 35p	10 50a 1 32p 1 32p 11 19p	Su Only Ex Su Su Only Ex Sa	3	200/632 518/412 508/412 350/248	ATL MEM MEM MEM	S/ /S /S
Chicago, Ill.	6 00a 10 40a 10 40a 3 20p 5 35p	10 08a 1 15p 1 15p 6 26p 10 03p	Ex Su Ex Su Su Only Ex Sa Ex Sa	4	334 631/212 601/212 244/218 350/226	MEM MEM MEM MEM	SB /L /L /S
Columbia, S.C.	6 15a	11 09a	Su Only	3	200/849	ATL	S/
Columbus, Ga.	6 15a 11 00a 12 00n	11 31a 1 55p 5 00p	Su Only	3	200/823 321 516/716	ATL VPS	S/ S/
Detroit, Mich.	5 55a 2 20p 2 40p 4 30p	11 05a 6 25p 7 25p 9 15p	Ex Su Ex Sa Sa Only Ex Sa	4	630 636 606 638		SB S D D
Dothan, Ala.	12 00n 7 00p	1 31p 9 16p	Ex Sa	1	516 520		S
Eglin A.F.B./Fort Walton Beach, Fla.	12 00n 4 20p 4 30p 7 00p	12 47p 7 20p 7 20p 8 35p	Ex Sa Ex Sa	0	516 142/227 638/227 520	MOB MOB	S
Greenville, Miss.	6 00a 11 40a 5 35p	7 45a 1 27p 7 23p	Ex Su Ex Sa	2	334 340 350		S
Greenville/Spartanburg, S.C.	6 15a 4 20p	12 58p 9 00p	Su Only	4	200/825 142/144	ATL ATL	S/ S/
Gulfport/Biloxi, Miss.	5 55a 6 15a 11 00a 4 20p 7 00p	6 20a 6 40a 11 25a 4 45p 7 25p	Ex Su Su Only Ex Sa	0	630 200 321 142 520		S S
Huntsville/Decatur, Ala.	6 00a 2 20p 3 20p 5 35p	9 33a 3 20p 5 48p 9 38p	Ex Su Ex Sa Ex Sa Ex Sa	4	334/413 636 244 350/248	MEM MEM	S/S
Jackson/Vicksburg, Miss.	3 20p	3 55p	Ex Sa	0	244		
Jackson, Tenn.	6 00a 11 40a 5 35p	10 02a 2 55p 9 25p	Ex Sa Su Ex Sa	4	334/842 340/418 350/420	MEM MEM MEM	S/
Knoxville/Oak Ridge, Tenn.	9 25a 9 25a	2 10p 2 10p	Ex Su Su Only	2	518/412 508/412	MEM MEM	/S /S

	Leave	Arrive	Freq.	Stops	Flight No.	Connect At	Meal
Memphis, Tenn.	6 00a 9 25a 9 25a 10 40a 10 40a 11 40a 3 20p 5 35p	8 30a 10 23a 10 23a 11 38a 11 38a 2 10p 4 45p 8 05p	Ex Su Ex Su Su Only Ex Su Su Only Ex Sa Ex Sa	3	334 518 508 631 601 340 244 350		S
Miami, Fla.	5 55a 12 00n 2 40p 4 20p 4 30p	12 58p 5 25p 9 47p 10 39p 10 39p	Ex Su Sa Only Ex Sa	4	630/217 516/713 606/229 142/227 638/227	BHM VPS BHM MOB MOB	S/B S/ /D
Mobile, Ala./Pascagoula, Miss.	5 55a 6 15a 11 00a 2 40p 4 20p 4 30p 7 00p	6 55a 7 15a 12 00n 3 10p 5 20p 5 00p 7 55p	Ex Su Su Only Sa Only Ex Sa Ex Sa	1	630 200 321 606 142 638 520		S S
Monroe, La.	6 00a 11 40a 5 35p	7 06a 12 49p 6 46p	Ex Su Ex Sa	1	334 340 350		S
Montgomery, Ala.	2 40p	6 36p	Sa Only	2	606/229		BHM
Muscle Shoals, Ala.	5 35p	9 32p	Ex Sa	4	350/846		MEM
Nashville, Tenn.	5 55a 6 00a 6 15a 11 40a 12 00n 2 20p 2 40p 4 30p 5 35p	8 40a 11 00a 10 35a 3 39p 5 24p 4 00p 4 55p 6 45p 10 10p	Ex Su Ex Sa Su Only Ex Sa Ex Sa Ex Sa Ex Sa	3	630 334/842 200/632 340/418 516/169 636 606 638 350/420	MEM ATL MEM ATL	S S/ S/ S/S
New York, N.Y./Newark, N.J.	11 00a 12 00n	4 40pL 7 50pL		4	321 516/716		L S/D
Orlando, Fla.	12 00n 4 20p 4 30p	4 28p 9 44p 9 44p	Ex Sa	2	516/713 142/227 638/227	VPS MOB MOB	S/ S/
St. Louis, Mo.	6 00a 9 25a 9 25a 10 40a 10 40a 3 20p 4 20p 5 35p	10 00a 11 38a 11 38a 12 50p 12 50p 7 03p 9 33p 9 33p	Ex Su Ex Su Su Only Ex Su Su Only Ex Sa Ex Sa	4	334/234 518 508 631 601 244/238 142/174 350/174	MEM MEM MEM MEM	S/ S/ S S
Tallahassee, Fla.	12 00n	3 19p		1	516/713		VPS S/
Tri Cities, Tenn., Va.	9 25a 9 25a	2 49p 2 49p	Ex Su Su Only	3	518/412 508/412	MEM MEM	/S /S
Tupelo, Miss.	10 40a 11 40a	1 55p 3 50p	Ex Sa Su	1	631/814 340/816	MEM MEM	MEM
Washington, D.C. (Dulles Intl Airport)	11 00a 12 00n	3 33p 6 38p		3	321 516/716		L S/D

From  
**New York, N.Y.**  
**Newark, N.J.**  
 L - La Guardia  
**765-4210**  
**800-241-9385**  
 Surrounding Areas Dial  
**800-241-9385**  
 For Laguardia Air Freight Call  
**335-1211**

To

Columbus, Ga.	L 10 00a L 5 10p	12 50p 7 58p		1	713 717		L D
Dothan, Ala.	L 10 00a	12 34p		2	713		L
Eglin A.F.B./Fort Walton Beach, Fla.	L 10 00a	1 20p		3	713		L
Gulfport/Biloxi, Miss.	L 10 00a L 5 10p	2 58p 8 37p		4	713/517 717	VPS	L/ D
Miami, Fla.	L 10 00a	5 25p		6	713		L
Mobile, Ala./Pascagoula, Miss.	L 5 10p	8 03p		2	717		D
New Orleans, La.	L 10 00a L 5 10p	3 45p 9 15p		5	713/517 717	VPS	L/ D
Orlando, Fla.	L 10 00a	4 28p		5	713		L
Tallahassee, Fla.	L 10 00a	3 19p		4	713		L



	Leave	Arrive	Freq.	Stops	Flight No.	Connect At	Meal
Washington, D.C. (Dulles Intl Airport)	L 10 00a	10 58a		0	713		
	L 5 10p	6 08p		0	717		

From  
**Oak Ridge, Tenn.**  
 (See Knoxville/Oak Ridge, Tenn.) **800-241-2521**

From  
**Orlando, Fla. (McCoy JetPort)**  
**851-4310**  
 Surrounding Areas Dial  
**800-241-2521**  
 For Air Freight Call: **851-0703**

Anniston, Ala.	11 42a	3 07p		4	216/818	ATL	
Atlanta, Ga.	8 35a	12 40p		3	212/164	HSV	S/
	11 42a	2 35p		3	216		
	1 55p	6 43p		3	716/856	DHN	
	7 37p	12 01a	Ex Sa	2	228/248	HSV	S/
Birmingham, Ala.	3 13p	3 53p		1	218		
	7 12p	7 27p		0	226		D
Chattanooga, Tenn.	7 37p	11 19p	Ex Sa	1	228/248	HSV	S/
Chicago, Ill.	8 35a	1 15p	O	4	212		SL
	10 35a	2 40p	O	4	210		S
	3 13p	6 26p	M	3	218		S
	7 12p	10 03p	O	2	226		D
Columbus, Ga.	11 42a	1 54p		2	216		
	1 55p	5 00p		3	716		
Detroit, Mich.	3 13p	7 25p	Sa Only	3	218/606	BHM	/D
	3 13p	9 15p	Ex Sa	3	218/638	BHM	/D
Dothan, Ala.	1 55p	3 21p		2	716		
Eglin A.F.B./Fort Walton Beach, Fla.	10 35a	10 35a		0	210		
	1 55p	2 27p		1	716		
	8 42p	9 37p		2	230		
Gadsden, Ala.	11 42a	3 36p		5	216/818	ATL	
Golden Triangle Regional Airport, Miss.	8 35a	1 20p		4	212/812	MEM	S/
	10 35a	4 25p		5	210/816	MEM	
	7 12p	9 37p		2	226/355	MEM	D/
Grand Cayman, B.W.I.	12 18p	2 00p		1	217/221	MIA	/S
Greenville, Miss.	8 35a	12 55p		4	212/339	MEM	S/
	7 12p	9 15p	Ex Sa	2	226/353	MEM	D/
	7 12p	9 15p	Sa Only	2	226/303	MEM	D/
Gulfport/Biloxi, Miss.	7 12p	9 47p	Ex Sa	2	226/637	BHM	D/
Huntsville/Decatur, Ala.	8 35a	10 20a		2	212		S
	11 42a	3 38p		4	216/247	ATL	
	7 37p	7 59p		0	228		S
Jackson/Vicksburg, Miss.	10 35a	12 11p		2	210		
Jackson, Tenn.	10 35a	2 55p		4	210/418	MEM	
	7 12p	9 25p	Ex Sa	2	226/420	MEM	D/
Knoxville/Oak Ridge, Tenn.	7 37p	11 58p	Ex Sa	2	228/420	BNA	S/
Memphis, Tenn.	8 35a	11 15a		3	212		S
	10 35a	1 03p		3	210		
	11 42a	4 30p		5	216/247	ATL	
	3 13p	4 50p		2	218		
	7 12p	8 25p		1	226		D
Miami, Fla.	9 19a	9 59a		0	213		
	11 23a	12 03p		0	215		
	12 18p	12 58p		0	217		
	12 58p	1 38p		0	211		
	4 45p	5 25p		0	713		
	6 20p	7 00p		0	225		
	9 07p	9 47p		0	229		
	9 59p	10 39p		0	227		
Mobile, Ala./Pascagoula, Miss.	10 35a	11 25a		1	210		
	3 13p	5 42p	Ex Sa	2	218/141	BHM	
	7 12p	9 12p	Ex Sa	1	226/637	BHM	D/
Monroe, La.	8 35a	1 31p		5	212/339	MEM	S/
	7 12p	9 53p	Ex Sa	3	226/353	MEM	D/
	7 12p	9 53p	Sa Only	3	226/303	MEM	D/
Montgomery, Ala.	8 35a	9 17a		1	212		S
	3 13p	3 14p		0	218		
Muscle Shoals, Ala.	7 37p	9 07p		1	228/249	HSV	S/

	Leave	Arrive	Freq.	Stops	Flight No.	Connect At	Meal
Nashville, Tenn.	11 42a	2 59p		4	216/165	ATL	
	3 13p	4 55p	Sa Only	2	218/606	BHM	
	3 13p	6 45p	Ex Sa	2	218/638	BHM	
	7 37p	8 40p		1	228		S

New Orleans, La. 10 35a 1 00p Su Only 2 210/605 MOB

New York, N.Y./Newark, N.J. 1 55p 7 50pL 5 716 D

Panama City, Fla. 11 42a 12 06p 8 42p 9 06p 1 216 230

St. Louis, Mo. 8 35a 12 50p 8 35a 12 50p 3 13p 7 03p 7 12p 9 33p Ex Su Su Only 4 4 212/631 4 212/601 3 218/238 2 226/174 MEM MEM MEM S/S S/S D/

Tallahassee, Fla. 8 35a 9 20a 11 42a 12 27p 1 55p 2 40p 8 42p 9 27p 0 0 0 0 212 216 716 230 S

Tri Cities, Tenn., Va. 7 37p 12 40a Ex Sa 3 228/420 BNA S/

Tupelo, Miss. 10 35a 1 55p 10 35a 3 50p Ex Sa Su 4 4 210/814 4 210/816 MEM MEM

Washington, D.C. (Dulles Intl Airport) 1 55p 6 38p 4 716 D

From  
**Oxford, Miss.**  
 (See University/Oxford, Miss.) **800-241-2521**

From  
**Panama City, Fla.**  
**769-2221**  
 Surrounding Areas Dial  
**800-241-2521**  
 For Air Freight Call **785-0591**

Anniston, Ala.	7 00a	10 57a	Th Sa Only	2	510/803	ATL	S/
	12 20p	3 07p		2	216/818	ATL	
	5 03p	8 27p	Ex Sa Su	2	519/820	ATL	
Athens, Ga.	7 00a	12 03p		2	510/825	ATL	S/
	5 03p	9 09p		2	519/871	ATL	
Atlanta, Ga.	7 00a	9 15a		1	510		S
	11 07a	12 55p		0	511		
	12 20p	2 35p		1	216		
	5 03p	7 40p		1	519		
Birmingham, Ala.	7 00a	9 50a		2	510/137	ATL	S/
Charleston, S.C.	7 00a	12 03p		3	510/849	ATL	S/
Charlotte, N.C.	11 07a	3 39p		2	511/136	ATL	
	5 03p	9 39p		3	519/144	ATL	
Chattanooga, Tenn.	7 00a	10 50a		2	510/632	ATL	S/
Chicago, Ill.	6 41a	1 15p	O	4	213/212	TLH	S/L
Columbia, S.C.	7 00a	11 09a		2	510/849	ATL	S/
Columbus, Ga.	12 20p	1 54p		0	216		
Detroit, Mich.	7 00a	1 05p		4	510/632	ATL	S/L
Dothan, Ala.	7 00a	7 23a		0	510		S
Eglin A.F.B./Fort Walton Beach, Fla.	5 03p	5 24p		0	519		
	9 16p	9 37p		0	230		
Gadsden, Ala.	12 20p	3 36p		3	216/818	ATL	
	5 03p	8 56p	Ex Sa Su	3	519/820	ATL	
	5 03p	8 56p	Sa Su Only	3	519/808	ATL	
Golden Triangle Regional Airport, Miss.	11 07a	1 38p		2	511/135	ATL	
	5 03p	8 35p	Ex Sa	3	519/145	ATL	
Greenville/Spartanburg, S.C.	7 00a	12 58p		3	510/825	ATL	S/
	11 07a	3 05p		1	511/136	ATL	
	5 03p	9 00p		2	519/144	ATL	
Huntsville/Decatur, Ala.	7 00a	10 38a		2	510/163	ATL	S/
	11 07a	1 18p		1	511/245	ATL	
	12 20p	3 38p		2	216/247	ATL	
	5 03p	8 28p		2	519/249	ATL	
Memphis, Tenn.	6 41a	11 15a		3	213/212	TLH	S/
	12 20p	4 30p		3	216/247	ATL	
Meridian, Miss.	7 00a	10 32a		3	510/137	ATL	S/
	5 03p	9 15p	Ex Sa	4	519/145	ATL	



	Leave	Arrive	Freq.	Stops	Flight No.	Connect At	Meal
<b>From</b>							
<b>Panama City, Fla. (Cont.)</b>							
<b>To</b>							
Miami, Fla.	6 41a 3 44p 5 03p	9 59a 7 00p 10 39p		2 2 2	213 225 519/227	VPS	S
Montgomery, Ala.	6 41a	9 17a		1	213/212	TLH	S/
Muscle Shoals, Ala.	11 07a 5 03p	1 53p 9 07p		2 3	511/245 519/249	ATL ATL	
Nashville, Tenn.	7 00a 12 20p	10 35a 2 59p		3 2	510/632 216/165	ATL ATL	S/
New York, N.Y./Newark, N.J.	12 20p	4 40pL		2	216/321	CSG	/L
Orlando, Fla.	6 41a 3 44p 5 03p	9 04a 6 06p 9 44p		1 1 1	213 225 519/227	VPS	S
St. Louis, Mo.	12 20p	5 38p		4	216/247	ATL	
Tallahassee, Fla.	6 41a 3 44p	8 06a 5 09p		0 0	213 225		S
Tuscaloosa, Ala.	11 07a 5 03p	1 02p 8 02p	Ex Sa	1 2	511/135 519/145	ATL ATL	
Washington, D.C. (Dulles Intl Airport)	12 20p	3 33p		1	216/321	CSG	/L

**From**  
**Pascagoula, Miss.** **800-241-2521**  
(See Mobile, Ala./Pascagoula, Miss.)

**From**  
**Pine Belt Regional Airport, Miss.**  
**Laurel, Miss.** **800-241-2521**  
**Hattiesburg, Miss.** **800-241-2521**  
**To** For Air Freight Call 544-0111

Atlanta, Ga.	11 35a	2 35p		2	138		
Birmingham, Ala.	11 35a	12 47p		1	138		
Chicago, Ill.	6 30a 6 30a	10 08aO 10 08aO	Ex Su Su Only	3 3	332/334 332/304	MEM MEM	S/B S/B
Columbus, Ga.	11 35a	3 43p		3	138/225	ATL	
Dothan, Ala.	11 35a	4 22p		3	138/855	ATL	
Golden Triangle Regional Airport, Miss.	6 30a	7 30a		1	332		S
Huntsville/Decatur, Ala.	6 30a	9 33a	Ex Su	3	332/413	MEM	S/S
Jackson, Tenn.	6 30a	10 02a	Ex Sa	3	332/842	MEM	S/
Jacksonville, Fla.	11 35a	4 25p		2	138/235	BHM	
Memphis, Tenn.	6 30a	8 15a		2	332		S
Meridian, Miss.	6 30a 11 35a	6 55a 12 00n		0 0	332 138		S
Nashville, Tenn.	6 30a 11 35a	11 00a 2 59p	Ex Sa	4 3	332/842 138/165	MEM ATL	S/
St. Louis, Mo.	6 30a	10 00a	Ex Su	3	332/234	MEM	S/

**From**  
**Sheffield, Ala.** **383-4581**  
(See Muscle Shoals, Ala.)

**From**  
**Spartanburg, S.C.** **583-5441**  
(See Greenville/Spartanburg, S.C.)

**From**  
**Starkville, Miss.** **323-2622**  
(See Golden Triangle Regional Airport, Miss.)

	Leave	Arrive	Freq.	Stops	Flight No.	Connect At	Meal
<b>From</b>							
<b>St. Louis, Mo.</b>							
<b>To</b>							
<b>621-9177</b> Surrounding Areas Dial 800-241-9385 For Air Freight Call 429-7524							
Atlanta, Ga.	12 20p 7 52p	7 30p 12 01a	Ex Sa	4	235/816 3 248	MEM	S/
Baton Rouge, La.	7 45a 10 40a 6 20p	11 06a 2 16p 10 39p	Ex Sa	3 3 3	321/333 412/339 237/353	MEM MEM MEM	S/ S/ S/
Birmingham, Ala.	7 45a 12 20p 6 20p	9 36a 2 11p 8 10p	Ex Sa	1 1 1	321/217 235 237	MEM	S/S S S
Chattanooga, Tenn.	10 40a 7 52p	1 32p 11 19p	Ex Sa	1 2	412 248		S
Dothan, Ala.	7 45a	1 31p		3	321/516	MSY	S/S
Eglin A.F.B./Fort Walton Beach, Fla.	7 45a	12 47p		2	321/516	MSY	S/S
Golden Triangle Regional Airport, Miss.	10 40a 1 40p 6 20p 7 52p	1 20p 4 25p 9 37p 9 37p	Sa Only Ex Sa	1 2 1 1	412/812 142/816 207/355 248/355	MEM MEM MEM MEM	S/ S/ S/ S/
Greenville, Miss.	7 45a 10 40a 6 20p 6 20p	9 44a 12 55p 9 15p 9 15p	Ex Sa Sa Only	1 1 1 1	321/333 412/339 237/353 207/303	MEM MEM MEM MEM	S/ S/ S/ S/
Greenwood, Miss.	7 45a 1 40p	10 24a 5 34p	Ex Sa Ex Sa	2 2	321/833 142/837	MEM MEM	S/ S/
Gulfport/Biloxi, Miss.	7 45a 1 40p 6 20p	11 25a 4 45p 9 47p	Ex Sa	2 2 3	321 142 237/637		S S BHM S/
Huntsville/Decatur, Ala.	7 45a 7 52p	9 33a 9 38p	Ex Su Ex Sa	1 1	321/413 248	MEM	S/S
Jackson/Vicksburg, Miss.	1 40p	4 13p		1	142/345	MEM	
Jackson, Tenn.	7 45a 12 20p 7 52p	10 02a 2 55p 9 25p	Ex Sa Ex Sa	1 1 1	321/842 235/418 248/420	MEM MEM MEM	S/ S/ S/
Jacksonville, Fla.	12 20p 6 20p	4 25p 10 25p	Ex Sa	2 2	235 237		S S
Knoxville/Oak Ridge, Tenn.	10 40a 12 20p 7 52p	2 10p 5 26p 11 58p	Ex Sa	2 3 3	412 235/418 248/420	MEM MEM MEM	S S/ S/
Memphis, Tenn.	7 45a 10 40a 12 20p 1 40p 6 20p 7 52p	8 33a 11 28a 1 08p 2 28p 7 08p 7 08p 8 40p	Ex Sa Sa Only Ex Sa	0 0 0 0 0 0	321 412 235 142 237 207 248		S S S S S S
Meridian, Miss.	6 20p 7 52p	10 15p 10 15p	Sa Only Ex Sa	2 2	207/355 248/355	MEM MEM	S/ S/
Miami, Fla.	7 45a	12 58p		3	321/217	MEM	S/SB
Mobile, Ala./Pascagoula, Miss.	7 45a 7 45a 1 40p 1 40p 6 20p	10 35a 12 00n 5 00p 5 20p 9 12p	Ex Su Ex Sa Ex Sa	2 3 3 3	321/413 321 142/638 142 237/637	MEM MSY BHM	S/S S S/
Monroe, La.	7 45a 10 40a 6 20p 6 20p	10 18a 1 31p 9 53p 9 53p	Ex Sa Sa Only	2 2 2 2	321/333 412/339 237/353 207/303	MEM MEM MEM MEM	S/ S/ S/ S/
Montgomery, Ala.	7 45a	9 55a		1	321/211	MEM	S/
Muscle Shoals, Ala.	6 20p 6 20p	9 32p 9 32p	Ex Sa Sa Only	1 1	237/846 207/846	MEM MEM	S/ S/
Nashville, Tenn.	7 45a 12 20p 7 52p	11 00a 3 39p 10 10p	Ex Sa Ex Sa	2 2 2	321/842 235/418 248/420	MEM MEM MEM	S/ S/ S/
New Orleans, La.	7 45a 10 40a 1 40p 6 20p	10 08a 2 50p 3 48p 11 12p	Ex Sa	1 4 1 4	321 412/339 142 237/353	MEM	S MEM MEM S/
Orlando, Fla.	7 45a	12 04p		2	321/217	MEM	S/SB
Pine Belt Regional Airport, Miss.	6 20p 7 52p	10 55p 10 55p	Sa Only Ex Sa	3 3	207/355 248/355	MEM MEM	S/ S/



	Leave	Arrive	Freq.	Stops	Flight No.	Connect At	Meal
Tallahassee, Fla.	7 45a	11 47a		2	321/211	MEM	S/
Tri Cities, Tenn., Va.	10 40a 12 20p 7 52p	2 49p 6 07p 12 40a	Ex Sa	3 4 4	412 235/418 248/420	MEM MEM	S S/ S/
Tupelo, Miss.	10 40a 1 40p 6 20p	1 55p 3 50p 8 40p	Ex Sa Su Ex Sa	1 1 1	412/814 142/816 237/828	MEM MEM MEM	S/ S/ S/
Tuscaloosa, Ala.	10 40a 1 40p 6 20p	2 01p 5 06p 9 31p	Ex Sa	2 3 2	412/812 142/816 237/828	MEM MEM MEM	S/ S/ S/
University/Oxford, Miss.	7 45a 1 40p	9 45a 4 55p	Ex Sa Ex Sa	1 1	321/833 142/837	MEM MEM	S/ S/

From  
**Tallahassee, Fla.**

To

**576-1165**  
Surrounding Areas Dial  
800-241-2521  
For Air Freight Call: 576-1836

Anniston, Ala.	12 42p	3 07p		3	216/818	ATL	
Atlanta, Ga.	9 40a 12 42p	12 40p 2 35p		2 2	212/164 216	HSV	
Chicago, Ill.	9 40a	1 15p	O	3	212		L
Columbus, Ga.	12 42p 2 55p	1 54p 5 00p		1 2	216 716		
Dothan, Ala.	2 55p	3 21p		1	716		
Eglin A.F.B./Fort Walton Beach, Fla.	2 55p 9 42p	2 27p 9 37p		0 1	716 230		
Gadsden, Ala.	12 42p	3 36p		4	216/818	ATL	
Greenville, Miss.	9 40a	12 55p		3	212/339	MEM	
Huntsville/Decatur, Ala.	9 40a 12 42p	10 20a 3 38p		1 3	212 216/247	ATL	
Memphis, Tenn.	9 40a 12 42p	11 15a 4 30p		2 4	212 216/247	ATL	
Miami, Fla.	8 21a 12 01p 3 45p 5 23p	9 59a 1 38p 5 25p 7 00p		1 1 1 1	213 211 713 225		S S
Montgomery, Ala.	9 40a	9 17a		0	212		
Nashville, Tenn.	12 42p	2 59p		3	216/165	ATL	
New York, N.Y./Newark, N.J.	12 42p 2 55p	4 40p 7 50p	L	3 4	216/321 4 716	CSG	/L D
Orlando, Fla.	8 21a 12 01p 3 45p 5 23p	9 04a 12 44p 4 28p 6 06p		0 0 0 0	213 211 713 225		S S
Panama City, Fla.	12 42p 9 42p	12 06p 9 06p		0 0	216 230		
St. Louis, Mo.	9 40a 9 40a 12 42p	12 50p 12 50p 5 38p	Ex Su Su Only	3 3 5	212/631 212/601 216/247	MEM MEM ATL	/S /S
Washington, D.C. (Dulles Intl Airport)	12 42p 2 55p	3 33p 6 38p		2 3	216/321 716	CSG	/L D

From  
**Thomasville, Ga.**  
(See Moultrie/Thomasville, Ga.)

To

**800-282-6565**

From  
**Tri-Cities, Tenn., Va.**  
**Bristol, Tenn., Va.**  
**Johnson City Tenn.**  
**Kingsport, Tenn.**

To

**323-4144**  
**928-9226**  
**323-4144**  
For Bristol Air Freight Call:  
323-6253  
For Johnson City Air Freight Call  
477-6253  
For Kingsport Air Freight Call:  
323-6253

Birmingham, Ala.	6 45a 6 32p	8 30a 8 10p	Ex Su Ex Sa	2 2	411/631 417/637	BNA BNA	S/S
Chattanooga, Tenn.	3 11p	4 18p		1	415		

	Leave	Arrive	Freq.	Stops	Flight No.	Connect At	Meal
Chicago, Ill.	6 45a 6 45a 3 11p 6 32p	10 08a 10 08a 6 26p 10 03p	Ex Su Su Only Ex Sa	4 4 3 4	411/334 411/304 415/218 417/226	MEM MEM MEM MEM	S/B S/B /S /S
Detroit, Mich.	6 45a 6 32p	11 05a 9 15p	Ex Su Ex Sa	2 2	411/630 417/638	BNA BNA	S/B /D
Golden Triangle Regional Airport, Miss.	6 32p	9 37p	Ex Sa	4	417/355	MEM	
Greenville, Miss.	6 45a 6 32p	9 44a 9 15p	Ex Sa	4 4	411/333 417/353	MEM MEM	S/ S/
Greenwood, Miss.	6 45a	10 24a	Ex Sa	5	411/833	MEM	S/
Gulfport/Biloxi, Miss.	6 45a 6 32p	11 25a 9 47p	Ex Sa	5 4	411/321 417/637	MEM BNA	S/ S/
Huntsville/Decatur, Ala.	6 45a	8 36a		2	411/215	BNA	S/
Jackson/Vicksburg, Miss.	3 11p	5 53p		3	415/227	MEM	
Jackson, Tenn.	6 45a 6 32p	7 45a 7 30p	Ex Sa	2 2	411 417		S
Knoxville/Oak Ridge, Tenn.	6 45a 3 11p 6 32p	7 12a 4 20p 6 59p	Ex Sa	0 0 0	411 415 417		S
Memphis, Tenn.	6 45a 3 11p 6 32p	8 25a 4 20p 8 05p	Ex Sa	3 2 3	411 415 417		S
Meridian, Miss.	6 32p	10 15p	Ex Sa	5	417/355	MEM	
Miami, Fla.	6 45a	12 03p		4	411/215	BNA	S/B
Mobile, Ala./Pascagoula, Miss.	6 45a 3 11p 6 32p	9 27a 6 36p 9 12p	Ex Su Ex Sa	3 4 3	411/631 415/227 417/637	BNA MEM BNA	S/S S/
Monroe, La.	6 45a 6 32p	10 18a 9 53p	Ex Sa	5 5	411/333 417/353	MEM MEM	S/ S/
Nashville, Tenn.	6 45a 6 32p	7 00a 6 45p	Ex Sa	1 1	411 417		S
New Orleans, La.	6 45a	10 08a		4	411/321	MEM	S/
Orlando, Fla.	6 45a	11 08a		3	411/215	BNA	S/B
St. Louis, Mo.	6 45a 3 11p 6 32p	10 00a 5 38p 9 33p	Ex Su Ex Sa	4 3 4	411/234 415/247 417/174	MEM MEM MEM	S/ S/
University/Oxford, Miss.	6 45a	9 45a	Ex Sa	4	411/833	MEM	S/

From  
**Tupelo, Miss.**

To

**800-241-2521**  
For Air Freight Call 842-8702

Albany, Ga.	4 00p	10 01p		3	816/857	ATL	
Athens, Ga.	4 00p	9 09p		3	816/871	ATL	
Atlanta, Ga.	4 00p	7 30p		2	816		
Baton Rouge, La.	7 28a 6 57p	11 06a 10 39p	Ex Su Ex Sa	3 3	813/333 819/353	MEM MEM	S/ S/
Charlotte, N.C.	4 00p	9 39p		4	816/144	ATL	
Chattanooga, Tenn.	6 57p	11 19p	Ex Sa	2	819/248	MEM	
Chicago, Ill.	7 28a 6 57p	10 08a 10 03p	Ex Su	1 1	813/334 819/226	MEM MEM	S/B
Dothan, Ala.	4 00p	7 59p		3	816/523	ATL	
Eglin A.F.B./Fort Walton Beach, Fla.	4 00p	9 15p		4	816/521	ATL	
Golden Triangle Regional Airport, Miss.	4 00p	4 25p		0	816		
Greenville/Spartanburg, S.C.	4 00p	9 00p		3	816/144	ATL	
Gulfport/Biloxi, Miss.	7 28a	11 25a	Ex Su	2	813/321	MEM	S/
Jackson/Vicksburg, Miss.	2 10p	4 13p	Ex Sa Su	1	811/345	MEM	
Jackson, Tenn.	7 28a 6 57p	10 02a 9 25p	Ex Sa Su Ex Sa	1 1	813/842 819/420	MEM MEM	S/ S/
Knoxville/Oak Ridge, Tenn.	6 57p	11 58p	Ex Sa	3	819/420	MEM	



From	Leave	Arrive	Freq.	Stops	Flight No.	Connect At	Meal
<b>Tupelo, Miss. (Cont.)</b>							
Memphis, Tenn.	7 28a 2 10p 6 57p	8 00a 2 42p 7 29p	Ex Su Ex Sa Su	0	813 811 819		S
Miami, Fla.	7 28a	12 58p	Ex Su	3	813/217	MEM	S/SB
Mobile, Ala./Pascagoula, Miss.	7 28a	10 35a	Ex Su	2	813/413	MEM	S/S
Monroe, La.	7 28a 6 57p 6 57p	10 18a 9 53p 9 53p	Ex Su Ex Sa Sa Only	2 2 2	813/333 819/353 819/303	MEM MEM MEM	S/ MEM MEM
Moultrie/Thomasville, Ga.	4 00p	9 13p		3	816/829	ATL	
Muscle Shoals, Ala.	6 57p	9 32p		1	819/846	MEM	
Nashville, Tenn.	7 28a 6 57p	11 00a 10 10p	Ex Sa Su Ex Sa	2 2	813/842 819/420	MEM MEM	S/ /S
New Orleans, La.	7 28a 2 10p 6 57p	10 08a 5 00p 11 12p	Ex Su Ex Sa Su Ex Sa	1 2 4	813/321 811/345 819/353	MEM MEM MEM	S/ MEM MEM
Orlando, Fla.	7 28a	12 04p	Ex Su	2	813/217	MEM	S/SB
Panama City, Fla.	4 00p	8 38p		4	816/523	ATL	
Pine Belt Regional Airport, Miss.	6 57p	10 55p		3	819/355	MEM	
St. Louis, Mo.	7 28a 2 10p 6 57p	10 00a 5 38p 9 33p	Ex Su Ex Sa Su	1 1 1	813/234 811/247 819/174	MEM MEM MEM	S/ MEM MEM
Tri Cities, Tenn., Va.	6 57p	12 40a	Ex Sa	4	819/420	MEM	
Tuscaloosa, Ala.	4 00p 8 55p	5 06p 9 31p	Ex Sa	1 0	816 828		
Valdosta, Ga.	4 00p	9 42p		4	816/829	ATL	

From	Leave	Arrive	Freq.	Stops	Flight No.	Connect At	Meal
<b>Tuscaloosa, Ala.</b>							
					<b>759-4466</b>		
					For Air Freight Call 752-3543		
Albany, Ga.	7 43a 2 33p 5 20p	11 00a 5 30p 10 01p	Ex Su	1	130/513 134/525 816/857	ATL ATL ATL	S/ ATL ATL
Athens, Ga.	7 43a 5 20p	12 03p 9 09p	Ex Su	1	130/825 816/871	ATL ATL	S/ ATL
Atlanta, Ga.	7 43a 2 33p 5 20p	9 25a 4 15p 7 30p	Ex Su	0	130 134 816		S ATL ATL
Charleston, S.C.	7 43a	12 03p	Ex Su	2	130/849	ATL	S/
Charlotte, N.C.	5 20p	9 39p		2	816/144	ATL	
Chattanooga, Tenn.	7 43a	10 50a	Ex Su	1	130/632	ATL	S/
Chicago, Ill.	6 40a 2 25p 5 40p	10 08a 6 26p 10 03p	Ex Su M O	2 2 3	813/334 815/218 819/226	MEM MEM MEM	S/B /S MEM
Columbia, S.C.	7 43a	11 09a	Ex Su	1	130/849	ATL	S/
Columbus, Ga.	7 43a 2 33p	11 31a 6 11p	Ex Su Ex Sa	1 1	130/823 134/827	ATL ATL	S/ ATL
Detroit, Mich.	7 43a	1 05p	Ex Su	3	130/632	ATL	S/L
Dothan, Ala.	7 43a 5 20p	10 32a 7 59p	Ex Su	2 1	130/513 816/523	ATL ATL	S/ ATL
Eglin A.F.B./Fort Walton Beach, Fla.	7 43a 2 33p 5 20p	10 09a 5 24p 9 15p	Ex Su	1 2 2	130/511 134/519 816/521	ATL ATL ATL	S/ ATL ATL
Golden Triangle Regional Airport, Miss.	1 18p 2 25p 5 40p 8 15p	1 38p 2 51p 6 06p 8 35p	Ex Sa	0	135 815 819 145		
Greenville, Miss.	6 40a 5 40p 5 40p	9 44a 9 15p 9 15p	Ex Su Ex Sa Sa Only	2 3 3	813/333 819/353 819/303	MEM MEM MEM	S/ MEM MEM
Greenville/Spartanburg, S.C.	7 43a 5 20p	12 58p 9 00p	Ex Su	2 1	130/825 816/144	ATL ATL	S/ ATL
Greenwood, Miss.	6 40a 2 25p	10 24a 5 34p	Ex Sa Su Ex Sa	3 3	813/833 815/837	MEM MEM	S/ MEM

From	Leave	Arrive	Freq.	Stops	Flight No.	Connect At	Meal
Jackson, Tenn.	6 40a 5 40p	10 02a 9 25p	Ex Sa Su Ex Sa	2 3	813/842 819/420	MEM MEM	S/ MEM
Memphis, Tenn.	6 40a 2 25p 5 40p	8 00a 3 55p 7 29p	Ex Su	1 1 2	813 815 819		S
Meridian, Miss.	8 15p	9 15p	Ex Sa	1	145		
Miami, Fla.	6 40a 2 25p	12 58p 9 47p	Ex Su	4 5	813/217 815/229	MEM MEM	S/SB /D
Monroe, La.	6 40a 5 40p 5 40p	10 18a 9 53p 9 53p	Ex Su Ex Sa Sa Only	3 4 4	813/333 819/353 819/303	MEM MEM MEM	S/ MEM MEM
Moultrie/Thomasville, Ga.	7 43a 5 20p	12 27p 9 13p	Ex Su	2 1	130/823 816/829	ATL ATL	S/ ATL
Muscle Shoals, Ala.	5 40p	9 32p		3	819/846	MEM	
Nashville, Tenn.	7 43a 2 33p 5 40p	10 35a 5 24p 10 10p	Ex Su Ex Sa	2 1 4	130/632 134/169 819/420	ATL ATL MEM	S/ /S
Panama City, Fla.	7 43a 2 33p 5 20p	10 50a 4 53p 8 38p	Ex Su	2 1 2	130/511 134/519 816/523	ATL ATL ATL	S/ ATL ATL
Pine Belt Regional Airport, Miss.	8 15p	10 55p	Ex Sa	2	145/355	MEI	
St. Louis, Mo.	6 40a 2 25p 5 40p	10 00a 5 38p 9 33p	Ex Su	2 2 3	813/234 815/247 819/174	MEM MEM MEM	S/ MEM MEM
Tupelo, Miss.	6 40a 5 40p	7 16a 6 47p	Ex Su	0 1	813 819		S
University/Oxford, Miss.	6 40a 2 25p	9 45a 4 55p	Ex Sa Su Ex Sa	2 2	813/833 815/837	MEM MEM	S/ MEM
Valdosta, Ga.	7 43a 2 33p 5 20p	12 56p 6 07p 9 42p	Ex Su	3 2 2	130/823 134/525 816/829	ATL ATL ATL	S/ ATL ATL

From	Leave	Arrive	Freq.	Stops	Flight No.	Connect At	Meal
<b>Tuscumbia, Ala.</b>							
					<b>383-4581</b>		
					(See Muscle Shoals, Ala.)		
<b>University, Miss.</b>							
<b>Oxford, Miss.</b>							
					<b>800-241-2521</b>		
					<b>800-241-2521</b>		
					For Air Freight Call 234-2211		
Atlanta, Ga.	7 44p	12 01a	Ex Sa	3	836/248	MEM	
Baton Rouge, La.	11 24a 7 44p	2 16p 10 39p	Ex Sa Ex Sa	3 3	830/339 836/353	MEM MEM	
Birmingham, Ala.	11 24a	2 11p	Ex Sa	1	830/235	MEM	
Chattanooga, Tenn.	7 44p	11 19p	Ex Sa	2	836/248	MEM	
Chicago, Ill.	11 24a 7 44p	2 40p 10 03p	Ex Sa Ex Sa	1 1	830/210 836/226	MEM MEM	/S MEM
Greenwood, Miss.	9 55a 5 05p	10 24a 5 34p	Ex Sa Ex Sa	0 0	833 837		
Jackson/Vicksburg, Miss.	5 05p	6 14p	Ex Sa	1	837		
Jackson, Tenn.	7 44p	9 25p	Ex Sa	1	836/420	MEM	
Knoxville/Oak Ridge, Tenn.	7 44p	11 58p	Ex Sa	3	836/420	MEM	
Memphis, Tenn.	11 24a 7 44p	11 47a 8 07p	Ex Sa Ex Sa	0 0	830 836		
Meridian, Miss.	7 44p	10 15p	Ex Sa	2	836/355	MEM	
Monroe, La.	11 24a 7 44p	1 31p 9 53p	Ex Sa Ex Sa	2 2	830/339 836/353	MEM MEM	
Muscle Shoals, Ala.	7 44p	9 32p	Ex Sa	1	836/846	MEM	
Nashville, Tenn.	7 44p	10 10p	Ex Sa	2	836/420	MEM	
St. Louis, Mo.	11 24a 11 24a 7 44p	12 50p 12 50p 9 33p	Ex Sa Su Su Only Ex Sa	1 1 1	830/631 830/601 836/174	MEM MEM MEM	/S /S
Tri Cities, Tenn., Va.	7 44p	12 40a	Ex Sa	4	836/420	MEM	
Tuscaloosa, Ala.	11 24a	2 01p	Ex Sa	2	830/812	MEM	



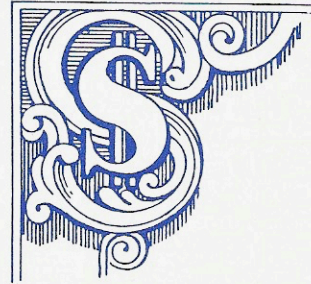
	Leave	Arrive	Freq.	Stops	Flight No.	Connect At	Meal
<b>From Valdosta, Ga.</b>							
<b>To 242-8945</b>							
For Air Freight Call 242-8947							
Albany, Ga.	6 28p	6 50p		0	526		
Anniston, Ala.	7 25a 6 28p 6 28p	10 57a 8 27p 8 27p	Th Sa Only Ex Sa Su Sa Su Only	2 2 2	822/803 526/820 526/808	ATL ATL ATL	S/  
Athens, Ga.	7 25a 6 28p	12 03p 9 09p		2 2	822/825 526/871	ATL ATL	S/ 
Atlanta, Ga.	7 25a 2 00p 6 28p	9 05a 3 37p 7 40p		1 1 1	822 870 526		S  
Birmingham, Ala.	7 25a 2 00p	9 50a 4 45p	Ex Sa	2 2	822/137 870/141	ATL ATL	S/ 
Charlotte, N.C.	6 28p	9 39p		3	526/144	ATL	
Chattanooga, Tenn.	7 25a	10 50a		2	822/632	ATL	S/
Columbia, S.C.	7 25a	11 09a		2	822/849	ATL	S/
Detroit, Mich.	7 25a	1 05p		4	822/632	ATL	S/L
Gadsden, Ala.	6 28p 6 28p	8 56p 8 56p	Ex Sa Su Sa Su Only	3 3	526/820 526/808	ATL ATL	
Golden Triangle Regional Airport, Miss.	2 00p 6 28p	6 06p 8 35p	Ex Sa	3 3	870/819 526/145	ATL ATL	
Greenville/Spartanburg, S.C.	7 25a 6 28p	12 58p 9 00p		3 2	822/825 526/144	ATL ATL	S/ 
Huntsville/Decatur, Ala.	7 25a 2 00p 6 28p	10 38a 3 38p 8 28p		2 2 2	822/163 870/247 526/249	ATL ATL ATL	S/  
Memphis, Tenn.	2 00p	4 30p		3	870/247	ATL	
Meridian, Miss.	7 25a 6 28p	10 32a 9 15p	Ex Sa	3 4	822/137 526/145	ATL ATL	S/ 
Mobile, Ala./Pascagoula, Miss.	7 25a 2 00p 6 28p	10 22a 5 42p 8 28p	Ex Sa	2 3 2	822/133 870/141 526/521	ATL ATL ATL	S/  
Moultrie/Thomasville, Ga.	7 25a 2 00p	7 44a 2 19p		0 0	822 870		S 
Muscle Shoals, Ala.	6 28p	9 07p		3	526/249	ATL	
Nashville, Tenn.	7 25a 2 00p	10 35a 5 24p		3 2	822/632 870/169	ATL ATL	S/ /S
St. Louis, Mo.	2 00p	5 38p		4	870/247	ATL	
Tupelo, Miss.	2 00p	6 47p		4	870/819	ATL	
Tuscaloosa, Ala.	2 00p 6 28p	5 28p 8 02p	Ex Sa	2 2	870/819 526/145	ATL ATL	

From **Vicksburg, Miss.** **800-241-2521**  
(See Jackson/Vicksburg, Miss.)

From **Washington, D.C.** (Dulles Intl Airport) **628-9032**  
To For Air Freight Call 471-4341

Columbus, Ga.	11 20a 6 28p	12 50p 7 58p		0 0	713 717		L D
Dothan, Ala.	11 20a	12 34p		1	713		L
Eglin A.F.B./Fort Walton Beach, Fla.	11 20a	1 20p		2	713		L
Gulfport/Biloxi, Miss.	11 20a 6 28p	2 58p 8 37p		3 2	713/517 717	VPS	L/ D
Miami, Fla.	11 20a	5 25p		5	713		L
Mobile, Ala./Pascagoula, Miss.	6 28p	8 03p		1	717		D
New Orleans, La.	11 20a 6 28p	3 45p 9 15p		4 3	713/517 717	VPS	L/ D
New York, N.Y./Newark, N.J.	3 49p 6 54p	4 40pL 7 50pL		0 0	321 716		
Orlando, Fla.	11 20a	4 28p		4	713		L
Tallahassee, Fla.	11 20a	3 19p		3	713		L

From **West Point, Miss.** **800-241-2521**  
(See Golden Triangle Regional Airport, Miss.)



**If Money is Important to You**

**Have We got a Deal for You!**

- Military Fares
- Thru-Fares
- Dollar Stopover Plan
- Group Fares
- Long Weekend Fares

**Call Southern for reservations and ask about our Fare Deals**



City	Closest Southern Airport/Ticket Office	Reservations Telephone	Miles From City	Limo Fare
Albany, Ga.	Albany Dougherty County Airport	436-2418	4 SW	\$2.50
Annisston, Ala.	Annisston Calhoun County Airport	237-6721	7 S	1.50
Athens, Ga.	Municipal Airport	548-1364	4 E	2.00
Atlanta, Ga.	Hartsfield Atlanta Intl. Airport Equitable Building	762-5561	10 SW	1.55
Baton Rouge, La.	Ryan Airport	383-4781	8 N	3.00
Biloxi, Miss.	Municipal Airport-Gulfport	864-2323	12 NW	2.55
Birmingham, Ala.	Municipal Airport	325-4124	5 NE	1.50
Bristol, Tenn.-Va.	Tri-City Airport	323-4144	16 SW	4.00
Charleston, S.C.	Municipal Airport	800-241-2521	13 NW	1.65
Charlotte, N.C.	Douglas Municipal Airport	800-241-2521	6 SW	1.25
Chattanooga, Tenn.	Lovell Field	265-4536	6 E	3.50
Chicago, Ill.	Midway Airport	726-6273	10 SW	2.35
	O'Hare Airport	726-6273	19 NW	2.75
	†Conrad Hilton Hotel-Lobby	726-6273		
	†33 North Dearborn Street	726-6273		
	†Hancock Center	726-6273		
	†445 North Michigan Avenue	726-6273		
	†310 South Michigan Avenue	726-6273		
	†35 East Monroe Street	726-6273		
	†O'Hare Inn	726-6273		
	†Regency Hyatt House	726-6273		
Columbia, S.C.	Metropolitan Airport	254-5181	7 SW	2.50
Columbus, Ga.	Metropolitan Airport	324-2493	7 NE	3.00
Columbus, Miss.	Golden Triangle Regional	328-4900	9 W	3.75
Decatur, Ala.	Madison County Airport-Huntsville	353-2960	12 E	6.00
Detroit, Mich.	Metropolitan Airport	964-2323	23 SW	2.65
Dothan, Ala.	Dothan Airport	792-3126	9 NW	3.00
Eglin Air Force Base, Fla.	Southern Airways Terminal	882-5542		
Florence, Ala.	Muscle Shoals Airport	383-4581	8 SE	3.25
Fort Walton Beach, Fla.	Eglin Air Force Base	243-3175	12 NE	6.00
Gadsden, Ala.	Municipal Airport	442-6370	9 SW	5.00
Grand Cayman, B.W.I.	Owen Roberts Airport	9-2955	1 E	1.40
	West Wind Building	9-2955		
Greenville, Miss.	Municipal Airport	332-3191	7 NE	3.25
Greenville, S.C.	Greenville-Spartanburg Airport	242-6535	15 NE	5.00
Greenwood, Miss.	Leflore Airport	800-241-2521	11 E	3.00
Gulfport, Miss.	Municipal Airport	864-2323	4 NE	2.25
Hattiesburg, Miss.	Pine Belt Regional Airport	800-241-2521	10 N	8.50
Huntsville, Ala.	Madison County Airport	539-7701	12 W	7.50
Jackson, Miss.	Thompson Field	948-7567	10 E	4.00
Jackson, Tenn.	McKellar Field	422-5416	6 W	3.50
Jacksonville, Fla.	International Airport	757-2381	15 N	2.85
Johnson City, Tenn.	Tri-City Airport	928-9226	15 NW	4.00

City	Closest Southern Airport/Ticket Office	Reservations Telephone	Miles From City	Limo Fare
Kingsport, Tenn.	Tri-City Airport	323-4144	15 SE	4.00
Knoxville, Tenn.	McGhee Tyson Airport	577-7561	13 S	3.25
Laurel, Miss.	Pine Belt Regional Airport	800-241-2521	19 SW	10.50
Memphis, Tenn.	International Airport	525-7681	10 S	2.75
Meridian, Miss.	Key Field	465-5165	4 W	1.90
Miami, Fla.	International Airport	379-7501	7 NW	2.00
	*Biscayne Blvd.	379-7501		
Mobile, Ala.	Bates Field	342-0733	14 W	7.00
Monroe, La.	Municipal Airport	325-4601	7½E	1.50
Montgomery, Ala.	Dannelly Field	263-3827	10 SW	1.90
Moultrie, Ga.	Moultrie/Thomasville Airport	800-282-6565	8 S	4.00
Muscle Shoals, Ala.	Muscle Shoals Airport	383-4581	1½E	2.50
Nashville, Tenn.	Metropolitan Airport	242-8381	8 SE	2.25
Newark, N.J.	LaGuardia Airport	800-241-9385	10 NE	.....
	†19 Commerce Street	800-241-9385		
New Orleans, La.	Moisant International Airport	525-0423	11 NW	3.50
New York, N.Y.	LaGuardia Airport	765-4210	8 NE	2.00
	†1335 Avenue of Americas	765-4210		
	†71 Broadway	765-4210		
	†277 Park Avenue, 27th Floor	765-4210		
	†East Side Airline Terminal	765-4210		
	†595 Fifth Avenue	765-4210		
	†100 E. 42nd Street	765-4210		
	†7th Avenue & 33rd Street	765-4210		
Oak Ridge, Tenn.	McGhee Tyson Airport-Knoxville	800-241-2521	40 SE	.....
Oxford, Miss.	Orlando Jetport at McCoy	851-4310	10 SE	2.50
Panama City, Fla.	University-Oxford Airport	800-241-2521	2 NW	1.00
Pascagoula, Miss.	Bay County Airport	769-2221	5 N	2.50
Sheffield, Ala.	Bates Field-Mobile, Ala.	800-241-2521		
Spartanburg, S.C.	Muscle Shoals Airport	383-4581	6 E	2.50
St. Louis, Mo.	Greenville-Spartanburg Airport	583-5441	16 SW	5.00
Starkville, Miss.	Lambert International Airport	621-9177	20 NW	3.20
Tallahassee, Fla.	Golden Triangle Regional	323-2822	10 E	3.75
Thomasville, Ga.	Municipal Airport	576-1165	4 SW	3.00
Tupelo, Miss.	Moultrie/Thomasville Airport	800-282-6565	21 N	7.00
Tuscaloosa, Ala.	C.D. Lemons Airport	800-241-2521	4½W	2.50
Tusculum, Ala.	Municipal Airport	759-4466	5 NW	3.00
University, Miss.	Muscle Shoals Airport	383-4581	7 NE	3.00
Valdosta, Ga.	University-Oxford Airport	800-241-2521	1 N	1.00
Vicksburg, Miss.	Municipal Airport	242-8945	3 SW	3.50
Washington, D.C.	Thompson Field Jackson, Miss.	800-241-2521		
	Dulles International Airport	628-9032	26 W	3.75
	1625 K Street	628-9032		
West Point, Miss.	Golden Triangle Regional	800-241-2521	14 S	3.75

Car rentals available at all cities

\*At this location, tickets may be purchased at the Trans World Airlines Counter.  
†At these locations, tickets may be purchased at the United Air Lines counter.

### Call Southern Toll Free Service from the following states

In Alabama, Florida, Kentucky, Mississippi, North Carolina, South Carolina and Tennessee, Dial 800-241-2521.

In Arkansas, Connecticut, Delaware, Illinois, Indiana, Iowa, Louisiana, Maryland, Massachusetts, Michigan, Missouri, New Jersey, New York, Ohio, Oklahoma, Pennsylvania, Rhode Island, Texas, Virginia, West Virginia, and Wisconsin, Dial 800-241-9385.

In Georgia, Dial 800-282-6565.



**Save Time!  
Order Your Ticket  
Delivered by Mail**



## Security is Everyone's Concern

For your protection Federal Air Regulations require all passengers and their carry-on items to be screened. Please allow extra time to accommodate this necessary security measure.



## Flight Itineraries

130:	MEI-GTR-TCL-ATL	247:	ATL-HSV-MEM-STL	713:	LGA-IAD-CSG-DHN-VPS-TLH-MCO-MIA
131:	CLT-GSP-ATL	248:	STL-MEM-HSV-CHA-ATL	716:	MIA-MCO-TLH-VPS-DHN-CSG-IAD-LGA
133:	ATL-MOB-GPT	249:	ATL-HSV-MSL	717:	LGA-IAD-CSG-MOB-GPT-MSY
134:	GTR-TCL-ATL	303:	MDW-MEM-GLH-MLU	800:	GAD-ANB-ATL
135:	ATL-TCL-GTR	304:	MLU-GLH-MEM-ORD	802:	ANB-ATL
136:	GPT-MOB-ATL-GSP-CLT	321:	STL-MEM-MSY-GPT-MOB-CSG-IAD-LGA	803:	ATL-ANB
137:	ATL-BHM-MEI-PIB	332:	PIB-MEI-GTR-MEM	808:	ATL-ANB-GAD
138:	PIB-MEI-BHM-ATL	333:	MEM-GLH-MLU-BTR-MSY	810:	ATL-GAD-ANB-ATL
140:	GPT-MOB-ATL	334:	MSY-BTR-MLU-GLH-MEM-ORD	811:	TUP-MEM
141:	ATL-BHM-MOB-MSY	339:	ORD-MEM-GLH-MLU-BTR-MSY	812:	MEM-GTR-TCL
142:	STL-MEM-MSY-GPT-MOB-ATL	340:	MSY-BTR-MLU-GLH-MEM	813:	TCL-TUP-MEM
144:	ATL-GSP-CLT	345:	ORD-MEM-JAN-MSY	814:	MEM-TUP
145:	ATL-TCL-GTR-MEI	350:	MSY-BTR-MLU-GLH-MEM	815:	TCL-GTR-MEM
161:	ATL-BNA	353:	MDW-MEM-GLH-MLU-BTR-MSY	816:	MEM-TUP-GTR-TCL-ATL
162:	MSL-HSV-ATL	355:	MEM-GTR-MEI-PIB	817:	ATL-GAD-ANB-ATL
163:	ATL-HSV	411:	TRI-TYS-BNA-MKL-MEM	818:	ATL-ANB-GAD-ATL
164:	HSV-ATL	412:	STL-MEM-CHA-TYS-TRI	819:	ATL-TCL-GTR-TUP-MEM
165:	ATL-BNA	413:	MEM-HSV-MOB-MSY	820:	ATL-ANB-GAD-ATL
166:	BNA-ATL	415:	TRI-TYS-CHA-MEM	822:	VLD-MGR-ATL
168:	BNA-ATL	417:	TRI-TYS-BNA-MKL-MEM	823:	ATL-CSG-MGR-VLD
169:	ATL-BNA	418:	MEM-MKL-BNA-TYS-TRI	824:	AHN-ATL
174:	CLT-GSP-ATL-MOB-GPT-MEM-STL	420:	MEM-MKL-BNA-TYS-TRI	825:	ATL-AHN-GSP
200:	MSY-GPT-MOB-ATL	508:	MSY-MEM-STL	827:	ATL-CSG
207:	STL-MEM	510:	PFN-DHN-ATL	828:	MEM-TUP-TCL
210:	MIA-MCO-VPS-MOB-JAN-MEM-ORD	511:	ATL-VPS-PFN-ATL	829:	ATL-MGR-VLD
211:	MEM-MGM-TLH-MCO-MIA	512:	VPS-ATL	830:	GWO-UOX-MEM
212:	MIA-MCO-TLH-MGM-HSV-MEM-ORD	513:	ATL-ABY-DHN	833:	MEM-UOX-GWO
213:	VPS-PFN-TLH-MCO-MIA	514:	DHN-ABY-ATL	836:	JAN-GWO-UOX-MEM
215:	BNA-HSV-MCO-MIA	516:	MSY-VPS-DHN-ATL	837:	MEM-UOX-GWO-JAN
216:	MIA-MCO-TLH-PFN-CSG-ATL	517:	ATL-DHN-VPS-GPT-MSY	841:	MSL-MEM
217:	ORD-MEM-BHM-MCO-MIA	518:	ATL-DHN-VPS-GPT-MSY-MEM-STL	842:	MEM-MKL-BNA
218:	MIA-MCO-MGM-BHM-MEM-MDW	519:	ATL-PFN-VPS-ATL	846:	MEM-MSL
221:	MIA-GCM	520:	MSY-GPT-MOB-VPS-DHN-ATL	847:	BNA-MKL-MEM
224:	GCM-MIA	521:	ATL-MOB-VPS	848:	CHS-CAE-ATL
225:	ATL-CSG-PFN-TLH-MCO-MIA	523:	BNA-ATL-DHN-PFN	849:	ATL-CAE-CHS
226:	MIA-MCO-BHM-MEM-ORD	525:	ATL-ABY-VLD	852:	ABY-ATL
227:	ORD-MEM-JAN-MOB-VPS-MCO-MIA	526:	VLD-ABY-ATL	855:	ATL-DHN
228:	MIA-MCO-HSV-BNA	601:	MSY-MEM-STL	856:	DHN-ATL
229:	MEM-BHM-MGM-MCO-MIA	605:	DTW-BNA-BHM-MOB-MSY	857:	ATL-ABY
230:	MIA-MCO-TLH-PFN-VPS	606:	MSY-MOB-BHM-BNA-DTW	870:	VLD-MGR-ATL
234:	JAX-BHM-MEM-STL	630:	MSY-GPT-MOB-BHM-BNA-DTW	871:	ATL-AHN
235:	STL-MEM-BHM-JAX	631:	DTW-BNA-BHM-MOB-MSY-MEM-STL	872:	GSP-AHN-ATL
237:	STL-MEM-BHM-JAX	632:	ATL-CHA-BNA-DTW	874:	CSG-ATL
238:	JAX-BHM-MEM-STL	633:	DTW-BNA-CHA-ATL	881:	ATL-ABY
241:	ATL-CHA-HSV-MEM	635:	DTW-BNA-HSV-MSY	885:	ATL-ABY
242:	MSL-HSV-ATL	636:	MSY-HSV-BNA-DTW	886:	ABY-ATL
244:	MSY-JAN-MEM-HSV-ATL	637:	DTW-BNA-BHM-MOB-GPT	888:	ABY-ATL
245:	ATL-HSV-MSL	638:	MSY-MOB-BHM-BNA-DTW		

## Airport Codes of Cities Served by Southern

Code	City	Code	City	Code	City
ABY	Albany, Ga.	GWO	Greenwood, Miss.	MKL	Jackson, Tenn.
AHN	Athens, Ga.	GPT	Gulfport/Biloxi, Miss.	MLU	Monroe, La.
ANB	Anniston, Ala.	GSP	Greenville/Spartanburg, S.C.	MOB	Mobile, Ala.
ATL	Atlanta, Ga.	GTR	Columbus/Starkville/West Point, Miss.	MSL	Muscle Shoals/Florence/Sheffield/Tuscumbia, Ala.
BHM	Birmingham, Ala.	HSV	Huntsville/Decatur, Ala.	MSY	New Orleans, La.
BNA	Nashville, Tenn.	IAD	Washington, D.C. (Dulles Intl. Airport)	ORD	Chicago, Ill. (O'Hare Airport)
BTR	Baton Rouge, La.	JAN	Jackson/Vicksburg, Miss.	PFN	Panama City, Fla.
CAE	Columbia, S.C.	JAX	Jacksonville, Fla.	PIB	Laurel/Hattiesburg, Miss.
CHA	Chattanooga, Tenn.	LGA	New York, N.Y. (LaGuardia Airport)	STL	St. Louis, Mo.
CHS	Charleston, S.C.	MCO	Orlando, Fla.	TCL	Tuscaloosa, Ala.
CLT	Charlotte, N.C.	MDW	Chicago, Ill. (Midway Airport)	TLH	Tallahassee, Fla.
CSG	Columbus, Ga.	MEI	Meridian, Miss.	TRI	Bristol/Kingsport/Johnson City, Tenn., Va.
DHN	Dothan, Ala.	MEM	Memphis, Tenn.	TUP	Tupelo, Miss.
DTW	Detroit, Mich.	MGM	Montgomery, Ala.	TYS	Knoxville/Oak Ridge, Tenn.
GAD	Gadsden, Ala.	MGR	Moultrie/Thomasville, Ga.	UOX	University/Oxford, Miss.
GCM	Grand Cayman, B.W.I.	MIA	Miami, Fla.	VLD	Valdosta, Ga.
GLH	Greenville, Miss.			VPS	Eglin A.F.B./Ft. Walton Beach, Fla.





June 1, 1975  
Flight Directory



Southern Airways, Inc.  
Hartsfield Atlanta International Airport  
Atlanta, Ga. 30320