

EFFECTIVE JUNE 15

NORTHWEST AIRLINES



SEATTLE SPOKANE TWIN CITIES CHICAGO

AND INTERMEDIATE POINTS

THE SHORT SCENIC ROUTE

BETWEEN CHICAGO AND THE
PACIFIC NORTHWEST

EVERY LINER BETWEEN CHICAGO AND SEATTLE
A LUXURIOUS NEW LOCKHEED ELECTRA

EXPECT *Luxury* WHEN YOU GO BY THE NORTHWEST PASSAGE

AS YOU TRAVEL



SINK BACK COMFORTABLY in a deeply upholstered spring seat chair.

TALK in ordinary conversational tones. The cabin is sound-proofed, and you'll find your fellow passengers are delightful companions, with a wide variety of interesting experiences.

SMOKE a cigarette, if you like, except, as experienced air travelers know, just before landing or just after taking off. The ash receiver is at the lower forward corner of your window. Top swings out for use. Even if you don't smoke, others smoking won't disturb you, because you have your own individual cool air ventilator just above your window. To open it, turn it to rear. Cabin temperature is always a comfortable 70 degrees in winter, even in below zero weather. And in summer, there is no air so cool and refreshing as that you get in plane travel, out of city dust and smoke.

READ the latest magazines which the co-pilot will bring you, or the newspapers which are put aboard at certain airports. If you have your own book, carry it under your arm, as it is difficult to get at your luggage after it has been stowed away. There is an individual light in the cabin wall at the side of your chair.

WRITE letters or postcards on the cards and stationery furnished by the co-pilot who will be glad to mail them for you. Co-pilots will also furnish telegram blanks.

CALL THE CO-PILOT at any time by pressing the co-pilot button at your side. He will bring you an extra pillow, blanket, or if you wish, other airline schedules or railroad time tables.

IF THE CHANGE in pressure bothers your eardrums as the ship takes off or lands, swallow once or twice per minute or yawn with head thrown back. Chewing gum is also good.

ABOUT MEALS. While en route during meal times, you are the guest of the Northwest Airlines.

SLEEP or doze in comfort by adjusting chair to a reclining position. Quiet is requested at



ONE OF THE FLEET of luxurious new Lockheed Electras which each month travel a distance equal to 1½ times around the world over the short, scenic route of Northwest Airlines.

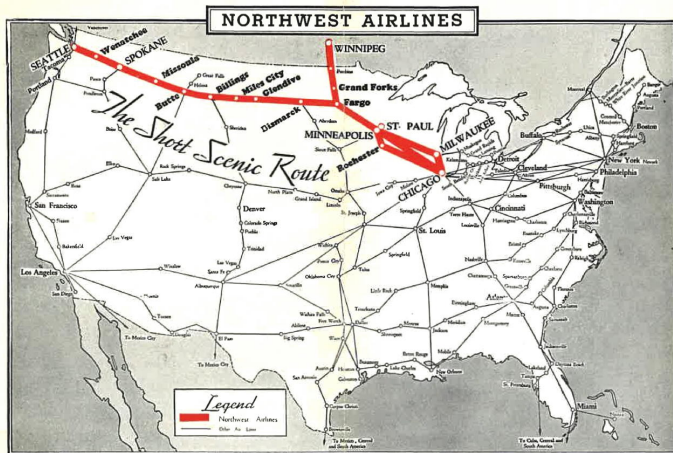
night while others are sleeping. If you desire to sleep, we suggest you keep seat belt fastened so co-pilot will not disturb you during landings and takeoffs.

LAVATORY is at the rear of the cabin. The light switch is at the left of the door as you enter.

TIME is Central Standard from Chicago through Bismarck, Mountain Standard from Glendive through Missoula, Pacific Standard from Spokane through Seattle.

RETURN TRIP SEAT RESERVATION should be made as soon as possible after arrival, to avoid possibility of all seats being sold the day you wish to return. (Round trip tickets purchased in advance enjoy a discount.)

BEFORE YOU GO—Make your reservation by phoning any of the ticket offices listed in this folder, or any leading hotel, travel bureau or telegraph office. You can always make sure of your reservation by purchasing your ticket in advance. Cancellations will be accepted and full refund made if you telegraph, telephone, write or tell us by 4:00 P. M. the preceding day when planes depart earlier than 10:00 A. M., or three hours before scheduled departure when planes leave after 10:00 A. M. Space reserved but not paid for will be held until cancellation limit and will be sold at that time.



YOUR TRAVELING BAG when fully packed, probably weighs somewhat less than 35 pounds. You can take up to this much. On any excess over this, we are forced to charge an excess per pound of 1/2 of 15% of passenger fare. Passenger regulations limit baggage to 50 pounds per passenger. Any more than this must be carried by special arrangement in advance.

CHILDREN under two years old are carried free if held on the lap of parents or guardian. Otherwise regulations say full fare must be charged.

SCHEDULES AND FARES shown are subject to change without notice, and the company will not be responsible for consequences arising from delays or errors in the printed schedule. The company reserves the right to cancel bookings before the passage or en route, and passenger shall be charged for only that portion of the fare earned.

IF YOU LOSE any articles enroute, wire, write or phone to the Traffic Dept., Holman Municipal Airport, St. Paul, Minn.

TO CONNECT WITH OTHER LINES—Wherever you get your ticket, you can also get information about connecting airlines to other cities, with rates, connecting times, and the best way to go.

BOSTON—Northwest Airlines connects at Chicago with American Airlines, United Air Lines and TWA. **CLEVELAND**—Northwest Airlines connects at Chicago with United Air Lines. **CINCINNATI**—Northwest Airlines connects at Chicago with American Airlines. **DENVER**—Northwest Airlines connects at Billings with Wyoming Air Service. **DETROIT**—Northwest Airlines connects at Chicago with American Airlines. **LOS ANGELES**—Northwest Airlines connects at Seattle with United Air Lines, connects at Butte with National Parks Airways, connects at Chicago with TWA, American Airlines and United Air Lines. **MIAMI**—Northwest Airlines connects at Chicago with Eastern Airlines. **NEW YORK**—Northwest Airlines connects at Chicago with United Air Lines, TWA and American Airlines. **PHILADELPHIA**—Northwest Airlines connects at Chicago with TWA, and United Air Lines. **PITTSBURGH**—Northwest Airlines connects at Chicago with TWA. **PORTLAND**—Northwest Airlines connects at Seattle with United Airlines. **ST. LOUIS**—Northwest Airlines connects at Chicago with American Airlines. **WASHINGTON**—Northwest Airlines connects at Seattle with United Airlines, United Air Lines and American Airlines.

Direct air connections are also available to many other cities. Steamship connections to Alaska and the Orient at Seattle.

USE AIR MAIL — ARRIVES FIRST — READ FIRST — ANSWERED FIRST

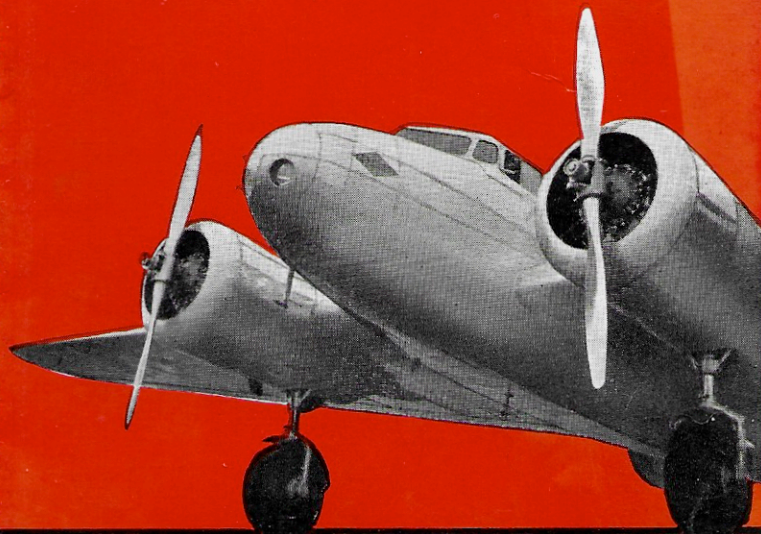
FOR AIR EXPRESS RATES AND INFORMATION CALL RAILWAY EXPRESS

NORTHWEST AIRLINES

NORTHWEST AIRLINES

TICKET OFFICES

City	Location	Tele- phone	Cab Co.	Fare	Running Time
Billings, Mont.	Northern Hotel	2133	Yellow	50c	10 min.
	Airport	6336			
Bismarck, N. D.	Northwest Airlines				
	13 1/2 North Broadway	3207			
Butte, Mont.	Prince Hotel	800	BL.&White	50c	10 min.
	Airport	826			
Chicago, Ill.	Finlen Hotel	5461	Spl. car	50c	15 min.
	Airport	6555			
Fargo, N. D.	Palmer House	5220	NWA car	75c	40 min.
	Airport	1400			
Glendive, Mont.	Chamb. of Com.	4500	Checker	50c	10 min.
	Airport	7165			
Grand Forks, N. D.	After hours:				
	Powers Hotel	5000			
Helena, Mont.	Bus Depot	279	Jordan	50c	10 min.
	Airport	50			
Jamestown, N. D.	Jordan Hotel	276			
	Dacotah Hotel	1900	Dakota	75c	10 min.
Mandan, N. D.	Airport	1101			
	Chamb. of Com.	37			
Miles City, Mont.	Airport	396W			
	After hours:				
Milwaukee, Wis.	Placer Hotel	1330			
	Gladstone Hotel	390			
Minneapolis, Minn.	Lewis & Clark	408	Bus to Bi	smar	ck and
	Airport	85	Cab	75c	30 min.
Missoula, Mont.	Milligan Hotel	808	Milligan	50c	10 min.
	Airport	811			
New York, N. Y.	Lowe Trvl. Serv.	Daly 2014	Yellow	75c	20 min.
	Airport	8280			
Pembina, N. D.	She Div. Traffic Off.	Daly 5151			
	City Ticket Office				
Rochester, Minn.	7th St. & 2nd Ave. So.	BR 3141	Yellow	75c	25 min.
	Airport	DU 9311			
Saint Paul, Minn.	Florence Hotel	3101	Meisinger	50c	10 min.
	Airport	2471			
Seattle, Wash.	41 E. 47th St.	Eld. 52301			
	Pembina, N. D.	U.S. Customs and Immigration—Airport	50		
Spokane, Wash.	Kahler Hotel	3381	Yellow	45c	10 min.
	Airport	2263			
Tacoma, Wash.	115 E. 4th St.	GA 1713	BL.&White	55c	10 min.
	Airport	RIV 4500			
Vancouver, B. C.	Executive Office	RIV 4500			
	406 Union St.	MA 7888	Yellow	50c	30 min.
Wenatchee, Wash.	Airport	GL 1200			
	Davenport Hotel	MA 2121	Yellow	75c	30 min.
Winnipeg	Airport	LA 1262			
	Canadian Airways Limited	SE 7131			
Yakima, Wash.	Pac Stages, Ltd.	1680	Yellow	75c	10 min.
	Cascadian Hotel	01292			
Winnipeg	Canadian Airways Limited	ys 20-1184			
	Airport	62- 677			
Yakima, Wash.	Western Airlines Inc.	YA 21828			



SEATTLE SPOKANE TWIN CITIES CHICAGO

AND INTERMEDIATE POINTS

**THE
SHORT SCENIC ROUTE**

**BETWEEN CHICAGO AND THE
PACIFIC NORTHWEST**

**EVERY LINER BETWEEN CHICAGO AND SEATTLE
A LUXURIOUS NEW LOCKHEED ELECTRA**

Leading Hotels • Travel Bureaus
Postal and Western Union Telegraph Offices

IN YOUR CITY CALL