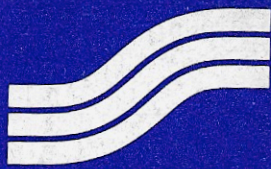


May 1, 1974  
Flight Directory



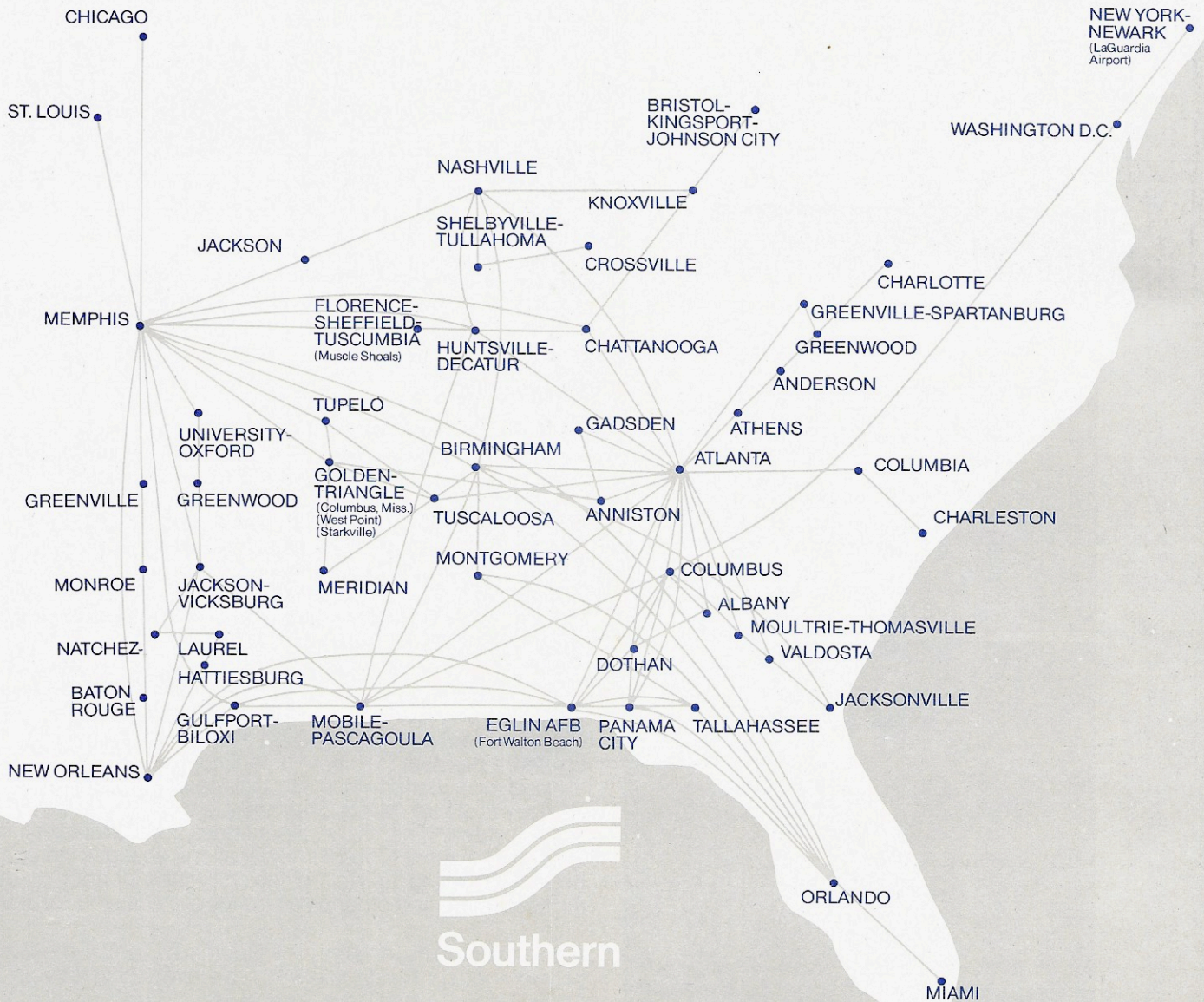
Southern







Southern is going your way.





# Southern Good-Time Vacations



## Good-Time Islands Air/Sea Cruise

Cruise the Caribbean from Miami with one of Norwegian Caribbean's pleasure ships for 7 or 14 days and include stops at places like Port-au-Prince, Montego Bay, St. Thomas, Nassau, Granada, and many other islands and cities. Enjoy the luxury of the sleek new liners and 4 meals a day (including the famed midnight buffets), plus daily and nightly entertainment, deck sports, movies and games. Plan for duty-free shopping, sightseeing foreign ports and shipboard fun.

## Good-Time Golf and Fishing or Swimming on the Finest Beaches

The Grand Hotel at Point Clear on Mobile Bay is nationally famous as an outdoor world of sports with an emphasis on golf. Good-Time Vacations are available for 7 days and 6 nights or 4 days and 3 nights. The Broadwater Beach Hotel at Biloxi has three sporty courses, two swimming pools and a marvelous beach. Tours available for 6 days and 5 nights or 3 days and 2 nights. All include breakfast and dinner, unlimited golf and many extras.

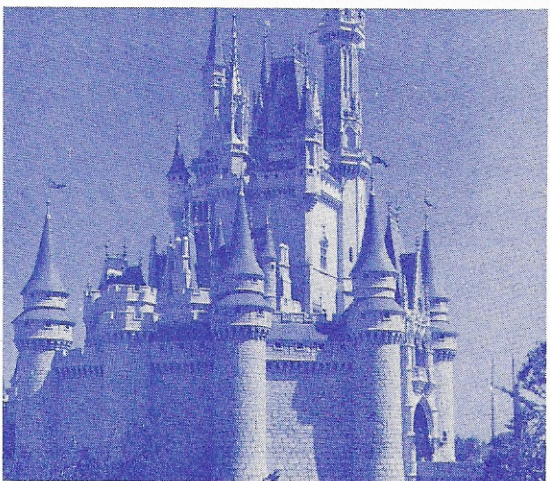


## Good-Time Disney World It's a Magic Kingdom for Everyone

If you haven't seen this magnificent vacation kingdom just outside beautiful Orlando, you've missed one of the country's most fabulous family resorts. Southern has a choice of Good-Time Vacations to this world of wonder and amazement. With our all-inclusive package vacations, we offer you a choice between dozens of luxurious hotels and motels. Included in these vacation packages are admissions to the "Magic Kingdom" and its attractions. You can stay a minimum of 3 days and 2 nights or add as many extra days as you like.

## Good-Time New Orleans Food and Fun and All That Jazz

Southern has over 20 different package vacations to this exciting former capital of the Louisiana Territory. Here in the home of the lavish Mardi Gras and the birthplace of jazz, you can find day and nighttime experiences unparalleled in this country. Southern Good-Time Vacation packages include your hotel, sightseeing trips to the fabled French Quarter, a ride on the Mississippi and other pleasantries of the Bayou Country.



For more information about all Southern Good-Time Vacations, call Southern or the people who have everything for your Good-Time . . . your Travel Agency.



**How to Use the Flight Directory**

Simply look up the city from which you wish to begin your trip. These originating cities will be listed alphabetically in the color panels on the following pages. Look down the alphabetical listing of cities under the color panel to find your desired destination. Once you have located your origin and destination cities, you may use the legend below to accurately read Southern's time-saver flight directory.

	1	2	3	4
	Leave	Arrive	Freq. Stops	Flight No. Connect At Meal
<b>From</b>				
<b>New Orleans, La.</b>				
<b>To</b>				
<b>St. Louis, Mo.</b>	7 20a	9 33a	1	330/332 MEM B/S
	9 20a	11 25a	1	
	12 00n	2 08p	1	338 L
	8 20p	10 28p	Ex Sa. 1	350/247 MEM
	5	6	7	8 9 10 11 12

**Explanation of Abbreviations and Symbols**

- |                |                |                       |
|----------------|----------------|-----------------------|
| Mo - Monday    | Sa - Saturday  | Ⓛ - LaGuardia Airport |
| Tu - Tuesday   | Su - Sunday    | B - Breakfast         |
| We - Wednesday | Ex - Except on | L - Lunch             |
| Th - Thursday  | a - A.M.       | D - Dinner            |
| Fr - Friday    | p - P.M.       | S - Snack Service     |

Connecting city codes are explained on the last page.

1. Originating city.
2. Local telephone number for Southern reservations.
3. Telephone number for air freight service—if this line does not appear, call the number in the panel.
4. Meal service on first flight.
5. Destination city.
6. Leave—departure time from your city shown in local time.
7. Arrive—arrival time at your destination city shown in local time.
8. Exceptions to the daily operation of the flight.
9. Number of stops to destination.
10. Flight number(s). If connecting flights are involved, flight numbers are shown in sequence.
11. Symbol for connecting city.
12. Meal service on second flight.

**Fares**

Sample fares are quoted for your convenience and are subject to applicable tariffs, which are open for inspection at any Southern ticket office. Fares quoted do not include state tax, but DO INCLUDE AN 8% FEDERAL TAX.

**Baggage**

The free baggage allowance, solely within the Continental United States and/or Canada, is three bags having linear dimensions no greater than 82", 55", and 45". Luggage in excess of the free allowance will be transported only after payment of charges in accordance with the appropriate tariff. Any piece having linear dimensions exceeding 80" or weighing more than 70 pounds will not be accepted as baggage. Government safety regulations limit carry-on baggage to items that can be stored under the passenger's seat. All passenger baggage is accepted subject to tariff limitations.

**Hotel/ Car Rentals**

Reservations for hotel space and car rentals may be made through any Southern office at the same time your flight space is reserved. Your Southern Agent will be happy to assist you.

**Equipment**

Flights are scheduled with 75 and 95 passenger Douglas DC-9 FanJET aircraft designated by flight numbers 130-799 and 40 passenger Martin-404 aircraft designated by flight numbers 800-899.

**Charge Accounts**

Southern honors various major credit cards including its own Local Air Travel Plan for travel over the routes of Southern and certain trunk airlines. Your Southern Agent will be happy to furnish details.

**Reservations**

Must be made in advance at any airline ticket office or travel agency. Passengers are requested to check in at the airport counter at least 45 minutes before flight departure to allow ample time for checking in and security screening. Persons may be refused passage if arriving at ticket lift position less than 10 minutes before departure time when accommodating them may delay the departure.

**Responsibility for Departures-Arrivals-Connections**

Southern will not be responsible for damages resulting from the failure of flights to depart or arrive at times stated in this flight directory, nor for failure to make connections with planes of other airlines or of this company. Schedules are subject to change without notice and are based on expected flying times. Because weather and other factors may affect operating conditions, departures and arrivals cannot be guaranteed.

**Children**

One child, under 2 and not occupying a seat, and accompanied by a fare paying passenger at least 12 years of age, will be carried free. No child under 5 may travel unaccompanied under conditions outlined in appropriate tariffs.

**Holidays**

Certain flights may not operate during holiday periods: consult Southern for details.



	Leave	Arrive	Freq.	Stops	Flight No.	Connect At	Meal
<b>From Albany, Ga.</b>							
<b>To 436-2418</b>							
<b>For Air Freight Call 435-8341</b>							
Anniston, Ala.	10 30a 7 30p	12 29p 9 07p	Ex Sa Su Ex Sa	2	886/817 864/820	ATL ATL	
Atlanta, Ga.	7 40a 10 30a 12 22p 4 05p 7 30p	8 40a 11 30a 12 57p 4 40p 8 53p	Ex Sa Su Ex Sa Ex Sa	0	852 886 514 526 864		S
Birmingham, Ala.	10 30a	12 15p	Ex Sa Su	1	886/135	ATL	
Charleston, S.C.	7 40a	12 03p		2	852/849	ATL	S/
Columbia, S.C.	7 40a	11 09a		1	852/849	ATL	S/
Columbus, Ga.	7 10a 7 30p	7 35a 8 03p	Ex Sa	0	710 864		
Dothan, Ala.	11 05a 11 38p	10 27a 11 00p		0	513 719		
Eglin A.F.B./Fort Walton Beach, Fla.	11 38p	11 35p		1	719		
Florence/Sheffield/Tuscumbia, Ala.	12 22p	1 48p		2	514/245	ATL	
Gadsden, Ala.	10 30a 7 30p	12 00n 9 36p	Ex Sa Su Ex Sa	1 3	886/817 864/820	ATL ATL	
Golden Triangle Regional Airport, Miss.	10 30a 4 05p	1 15p 6 01p	Ex Sa Su	3	886/135 526/819	ATL ATL	
Gulfport/Biloxi, Miss.	7 30p	8 37p	Ex Sa	2	864/717	CSG	
Huntsville/Decatur, Ala.	7 40a 12 22p 4 05p	9 58a 1 13p 4 38p		1 1 1	852/163 514/245 526/169	ATL ATL ATL	S/
Memphis, Tenn.	10 30a 4 05p	1 59p 7 24p	Ex Sa Su	4 4	886/135 526/819	ATL ATL	
Meridian, Miss.	7 40a	11 09a		2	852/137	ATL	S/
Mobile, Ala./Pascagoula, Miss.	7 30p	8 03p	Ex Sa	1	864/717	CSG	
Nashville, Tenn.	12 22p 4 05p	2 24p 5 20p		1 2	514/136 526/169	ATL ATL	
New Orleans, La.	7 30p	9 15p	Ex Sa	3	864/717	CSG	
New York, N.Y./Newark, N.J.	7 10a	10 19a		2	710		B
Tupelo, Miss.	4 05p	6 42p		3	526/819	ATL	
Tuscaloosa, Ala.	7 40a 10 30a 4 05p	10 34a 12 45p 5 23p	Ex Sa Su	1 2 1	852/137 886/135 526/819	ATL ATL ATL	S/
Washington, D.C. (Dulles Intl Airport)	7 10a	9 13a		1	710		B

	Leave	Arrive	Freq.	Stops	Flight No.	Connect At	Meal
<b>From Anderson, S.C.</b>							
<b>To 226-8626</b>							
Albany, Ga.	8 35a 3 25p	10 55a 7 11p	Ex Su Ex Sa	2	824/513 872/861	ATL ATL	S/
Anniston, Ala.	8 35a	10 57a	Th Only	2	824/803	ATL	S/
Athens, Ga.	8 35a 3 25p	9 00a 3 50p	Ex Su	0 0	824 872		S
Atlanta, Ga.	8 35a 3 25p	9 40a 4 35p	Ex Su	1	824 872		S
Charlotte, N.C.	12 48p	1 53p		1	825		
Columbus, Ga.	8 35a 8 35a 3 25p	11 26a 11 26a 6 16p	Ex Sa Su Sa Only Ex Sa	2 2 2	824/823 824/805 872/853	ATL ATL ATL	S/ S/
Dothan, Ala.	8 35a	10 27a	Ex Su	3	824/513	ATL	S/
Eglin A.F.B./Fort Walton Beach, Fla.	8 35a 3 25p	10 19a 5 29p	Ex Su	2 3	824/511 872/519	ATL ATL	S/
Golden Triangle Regional Airport, Miss.	3 25p	6 01p		3	872/819	ATL	
Greenville/Spartanburg, S.C.	9 44p	10 33p	Ex Sa	1	871		

	Leave	Arrive	Freq.	Stops	Flight No.	Connect At	Meal
Greenwood, S.C.	12 48p 9 44p	1 06p 10 02p	Ex Sa	0	825 871		
Gulfport/Biloxi, Miss.	8 35a 3 25p	11 02a 6 38p	Ex Su	3	824/133 872/174	ATL ATL	S/
Huntsville/Decatur, Ala.	8 35a 3 25p	9 58a 4 38p	Ex Su	2	824/163 872/169	ATL ATL	S/
Jacksonville, Fla.	8 35a	1 47p	Ex Sa Su	5	824/823	ATL	S/
Memphis, Tenn.	3 25p	7 24p		5	872/819	ATL	
Meridian, Miss.	8 35a	11 09a	Ex Su	3	824/137	ATL	S/
Mobile, Ala./Pascagoula, Miss.	8 35a 3 25p	10 27a 6 03p	Ex Su	2 2	824/133 872/174	ATL ATL	S/
Moultrie/Thomasville, Ga.	8 35a 8 35a	12 22p 12 22p	Ex Sa Su Sa Only	3 3	824/823 824/805	ATL ATL	S/ S/
Nashville, Tenn.	3 25p	5 20p		3	872/169	ATL	
Panama City, Fla.	8 35a 3 25p	10 52a 4 58p	Ex Su	3 2	824/511 872/519	ATL ATL	S/
Tupelo, Miss.	3 25p	6 42p		4	872/819	ATL	
Tuscaloosa, Ala.	8 35a 3 25p	10 34a 5 23p	Ex Su	2 2	824/137 872/819	ATL ATL	S/
Valdosta, Ga.	8 35a 8 35a	12 51p 12 51p	Ex Sa Su Sa Only	4 4	824/823 824/805	ATL ATL	S/ S/

	Leave	Arrive	Freq.	Stops	Flight No.	Connect At	Meal
<b>From Anniston, Ala.</b>							
<b>To 237-6721</b>							
<b>For Air Freight Call 831-1351</b>							
Albany, Ga.	6 35a 6 35a 12 43p 3 17p	10 10a 10 55a 3 50p 7 11p	Ex Sa Su Ex Su Ex Sa	2 1 1 2	811/881 811/513 817/525 818/861	ATL ATL ATL ATL	S/S S/
Anderson, S.C.	8 40a	12 43p	Su Only	2	801/825	ATL	S/
Athens, Ga.	8 40a	11 58a	Su Only	1	801/825	ATL	S/
Atlanta, Ga.	6 35a 8 40a 11 30a 12 18p 12 43p 3 17p 9 17p	8 15a 10 20a 1 10p 2 00p 2 25p 5 32p 11 30p	Ex Su Su Only Th Only	0 0 0 0 0 1 1	811 801 802 812 817 818 820		S S
Charleston, S.C.	6 35a	12 03p	Ex Su	2	811/849	ATL	S/
Charlotte, N.C.	8 40a	1 53p	Su Only	4	801/825	ATL	S/
Columbia, S.C.	6 35a	11 09a	Ex Su	1	811/849	ATL	S/
Columbus, Ga.	6 35a 8 40a 12 43p	9 31a 11 26a 3 13p	Ex Sa Su Su Only	1 1 1	811/881 801/805 817/225	ATL ATL ATL	S/S S/
Dothan, Ala.	6 35a 11 30a 12 43p	10 27a 1 24p 4 22p	Ex Su Th Only	2 1 1	811/513 802/517 817/855	ATL ATL ATL	S/
Eglin A.F.B./Fort Walton Beach, Fla.	6 35a 11 39a	10 19a 1 59p	Ex Su Th Only	1 2	811/511 802/517	ATL ATL	S/
Gadsden, Ala.	3 17p 9 17p	3 36p 9 36p	Ex Sa	0 0	818 820		
Greenville/Spartanburg, S.C.	12 43p	4 40p		1	817/173	ATL	
Greenwood, S.C.	8 40a	1 06p	Su Only	3	801/825	ATL	S/
Miami, Fla.	12 43p	6 38p		5	817/225	ATL	
Moultrie/Thomasville, Ga.	8 40a	12 22p	Su Only	2	801/805	ATL	S/
Nashville, Tenn.	12 18p 12 43p	2 24p 3 49p		1 1	812/136 817/617	ATL ATL	
Orlando, Fla.	12 43p	5 43p		4	817/225	ATL	
Panama City, Fla.	6 35a 12 43p	10 52a 3 04p	Ex Su	2 2	811/511 817/225	ATL ATL	S/
Tallahassee, Fla.	12 43p	4 45p		3	817/225	ATL	
Valdosta, Ga.	8 40a 12 43p	12 51p 5 22p	Su Only Ex Sa	3 1	801/805 817/827	ATL ATL	S/



	Leave	Arrive	Freq.	Stops	Flight No.	Connect At	Meal
From <b>Athens, Ga.</b> To <b>548-1364</b>							
Albany, Ga.	8 30a 9 10a 4 05p	10 55a 10 55a 7 11p	Su Only Ex Su Ex Sa	1 1 1	884/513 824/513 872/861	ATL ATL ATL	S/ S/ S/
Anderson, S.C.	12 18p 9 09p	12 43p 9 34p	Ex Sa	0 0	825 871		
Anniston, Ala.	9 10a	10 57a	Th Only	1	824/803	ATL	S/
Atlanta, Ga.	8 30a 9 10a 4 05p	9 00a 9 40a 4 35p	Su Only Ex Su	0 0 0	884 824 872		S S S
Charlotte, N.C.	12 18p	1 53p		2	825		
Columbus, Ga.	8 30a 9 10a 9 10a 4 05p	11 26a 11 26a 11 26a 6 16p	Su Only Ex Sa Su Sa Only Ex Sa	1 1 1 1	884/805 824/823 824/805 872/853	ATL ATL ATL ATL	S/ S/ S/ S/
Dothan, Ala.	8 30a 9 10a	10 27a 10 27a	Su Only Ex Su	2 2	884/513 824/513	ATL ATL	S/ S/
Eglin A.F.B./Fort Walton Beach, Fla.	8 30a 9 10a 4 05p	10 19a 10 19a 5 29p	Su Only Ex Su	1 1 2	884/511 824/511 872/519	ATL ATL ATL	S/ S/ S/
Golden Triangle Regional Airport, Miss.	4 05p	6 01p		2	872/819	ATL	
Greenville/Spartanburg, S.C.	9 04p 9 09p	9 39p 10 33p	Sa Only Ex Sa	0 2	883 871		
Greenwood, S.C.	12 18p 9 09p	1 06p 10 02p	Ex Sa	1 1	825 871		
Gulfport/Biloxi, Miss.	8 30a 9 10a 4 05p	11 02a 11 02a 6 38p	Su Only Ex Su	2 2 2	884/133 824/133 872/174	ATL ATL ATL	S/ S/ S/
Huntsville/Decatur, Ala.	8 30a 9 10a 4 05p	9 58a 9 58a 4 38p	Su Only Ex Su	1 1 1	884/163 824/163 872/169	ATL ATL ATL	S/ S/ S/
Jacksonville, Fla.	9 10a	1 47p	Ex Sa Su	4	824/823	ATL	S/
Memphis, Tenn.	4 05p	7 24p		4	872/819	ATL	
Meridian, Miss.	8 30a 9 10a	11 09a 11 09a	Su Only Ex Su	2 2	884/137 824/137	ATL ATL	S/ S/
Mobile, Ala./Pascagoula, Miss.	8 30a 9 10a 4 05p	10 27a 10 27a 6 03p	Su Only Ex Su	1 1 1	884/133 824/133 872/174	ATL ATL ATL	S/ S/ S/
Moultrie/Thomasville, Ga.	8 30a 9 10a 9 10a	12 22p 12 22p 12 22p	Su Only Ex Sa Su Sa Only	2 2 2	884/805 824/823 824/805	ATL ATL ATL	S/ S/ S/
Nashville, Tenn.	4 05p	5 20p		2	872/169	ATL	
Panama City, Fla.	8 30a 9 10a 4 05p	10 52a 10 52a 4 58p	Su Only Ex Su	2 2 1	884/511 824/511 872/519	ATL ATL ATL	S/ S/ S/
Tupelo, Miss.	4 05p	6 42p		3	872/819	ATL	
Tuscaloosa, Ala.	8 30a 9 10a 4 05p	10 34a 10 34a 5 23p	Su Only Ex Su	1 1 1	884/137 824/137 872/819	ATL ATL ATL	S/ S/ S/
Valdosta, Ga.	8 30a 9 10a 9 10a	12 51p 12 51p 12 51p	Su Only Ex Sa Su Sa Only	3 3 3	884/805 824/823 824/805	ATL ATL ATL	S/ S/ S/

	Leave	Arrive	Freq.	Stops	Flight No.	Connect At	Meal
From <b>Atlanta, Ga.</b> To <b>762-5561</b> For Air Freight Call 766-3562							
Albany, Ga.	8 55a 10 20a 3 15p 6 15p 9 05p	10 10a 10 55a 3 50p 7 11p 10 01p	Ex Sa Su Ex Sa Ex Sa	0 1 0 0 0	881 513 525 861 857		S S S S S
Anderson, S.C.	11 20a 8 20p	12 43p 9 34p	Ex Sa	1 1	825 871		
Anniston, Ala.	6 10a 8 15a 11 20a 12 10p 3 30p 9 30p	6 24a 8 29a 10 57a 12 29p 3 07p 9 07p	Ex Su Su Only Th Only Th Only Ex Sa Ex Sa	1 1 0 1 0 0	811 801 803 817 818 820		S S S S S S

	Leave	Arrive	Freq.	Stops	Flight No.	Connect At	Meal
Athens, Ga.	11 20a 8 20p 8 20p	11 58a 8 54p 8 54p	Ex Sa Sa Only	0 0 0	825 871 883		
Baton Rouge, La.	7 10a 1 45p	11 06a 5 50p	Ex Su	5 4	241/331 517/350	MEM MSY	S/ S/
Birmingham, Ala.	7 40a 12 40p	7 15a 12 15p		0 0	131 135		S
Charleston, S.C.	10 00a	12 03p		1	849		
Charlotte, N.C.	11 20a	1 53p		3	825		
Chattanooga, Tenn.	7 10a	7 40a	Ex Su	0	241		S
Chicago, Ill. (Midway Airport)	7 10a 5 15p	10 11a 9 36p	Ex Su	3 4	241/334 819/174	MEM MEM	S/B S/B
Columbia, S.C.	10 00a	11 09a		0	849		
Columbus, Ga.	8 55a 10 50a 10 50a 2 45p 5 40p	9 31a 11 26a 11 26a 3 13p 6 16p	Ex Sa Su Ex Sa Su Sa Su Only Ex Sa	0 0 0 0 0	881 823 805 225 853		S S S S S
Dothan, Ala.	8 20a 10 20a 1 45p 4 20p 9 20p	7 59a 10 27a 1 24p 4 22p 8 59p		0 1 0 0 0	508 513 517 855 523		S S S S S
Eglin A.F.B./Fort Walton Beach, Fla.	8 20a 10 25a 1 45p 5 10p 8 35p 9 20p	8 34a 10 19a 1 59p 5 29p 9 15p 11 35p		1 0 1 1 1 1	508 511 517 519 521 523/719		S S S S S DHN
Florence/Sheffield/Tuscumbia, Ala.	1 35p 8 55p	1 48p 9 12p		1 1	245 249		
Gadsden, Ala.	6 10a 8 15a 12 10p 3 30p 9 30p	5 55a 8 00a 12 00n 3 36p 9 36p	Ex Su Su Only Ex Sa	0 0 0 1 1	811 801 817 818 820		S S S S S
Golden Triangle Regional Airport, Miss.	12 40p 5 15p 8 30p	1 15p 6 01p 8 35p	Ex Sa	2 1 1	135 819 145		
Greenville, Miss.	7 10a 5 15p	9 45a 8 55p	Ex Su	3 4	241/331 819/353	MEM MEM	S/ S/
Greenville/Spartanburg, S.C.	4 05p 8 20p 8 20p 8 35p	4 40p 9 39p 10 33p 9 10p	Sa Only Ex Sa Ex Sa	0 1 3 0	173 883 871 177		
Greenwood, Miss.	7 10a	10 39a	Ex Su	4	241/833	MEM	S/
Greenwood, S.C.	11 20a 8 20p	1 06p 10 02p	Ex Sa	2 2	825 871		
Gulfport/Biloxi, Miss.	8 20a 10 25a 1 45p 6 10p	9 27a 11 02a 2 58p 6 38p		2 1 2 1	508 133 517 174		S S S S
Huntsville/Decatur, Ala.	7 10a 10 20a 1 35p 5 00p 7 30p 8 55p	7 21a 9 58a 1 13p 4 38p 7 30p 8 33p	Ex Su	1 0 0 0 0 0	241 163 245 169 869 249		S S S S S S
Jackson/Vicksburg, Miss.	7 40a	10 36a		2	131/210	MOB	S/
Jackson, Tenn.	7 10a 2 40p 5 00p 5 15p	10 12a 4 18p 7 05p 9 25p	Ex Sa Su Ex Sa Ex Sa Ex Sa	3 1 2 4	241/842 136/847 169/417 819/358	MEM BNA BNA MEM	S/ S/ S/ S/
Jacksonville, Fla.	10 50a	1 47p	Ex Sa Su	3	823		
Knoxville, Tenn.	2 40p	4 53p		1	136/418	BNA	
Memphis, Tenn.	7 10a 12 40p 2 40p 5 15p 7 30p	8 18a 1 59p 5 00p 7 24p 8 52p	Ex Su Ex Sa	2 3 2 3 1	241 135 136/847 819 869		S S S S S
Meridian, Miss.	10 50a 8 30p	11 09a 9 15p	Ex Sa	1 2	137 145		



	Leave	Arrive	Freq.	Stops	Flight No.	Connect At	Meal
<b>From Atlanta, Ga. (Cont.)</b>							
<b>To</b>							
Miami, Fla.	7 40a 1 45p 2 45p 5 10p	11 28a 5 48p 6 38p 10 39p		2 4 4 3	131/215 517/713 225 519/227	BHM VPS VPS	S/B
Mobile, Ala./Pascagoula, Miss.	7 40a 10 25a 6 10p 8 35p	8 10a 10 27a 6 03p 8 28p		1 0 0 0	131 133 174 521		S
Monroe, La.	7 10a 5 15p	10 18a 9 28p	Ex Su	4 5	241/331 819/353	MEM MEM	S/
Moultrie/Thomasville, Ga.	10 50a 10 50a 8 00p	12 22p 12 22p 9 03p	Ex Sa Su Sa Su Only	1 1 0	823 805 829		
Nashville, Tenn.	2 40p 4 05p 5 00p	2 24p 3 49p 5 20p		0 0 1	136 617 169		
New Orleans, La.	7 40a 8 20a 1 45p 6 10p	8 55a 10 05a 3 35p 9 15p		2 3 3 2	131 508 517 174/717		S S
Orlando, Fla.	7 40a 1 45p 2 45p 5 10p	10 34a 4 53p 5 43p 9 44p		1 3 3 2	131/215 517/713 225 519/227	BHM VPS VPS	S/B
Panama City, Fla.	10 25a 2 45p 5 10p 9 20p	10 52a 3 04p 4 58p 9 33p		1 1 0 1	511 225 519 523		
St. Louis, Mo.	7 10a 5 15p	9 43a 9 33p	Ex Su	3 4	241/234 819/350	MEM MEM	S/S
Tallahassee, Fla.	1 45p 2 45p	3 54p 4 45p		2 2	517/713 225	VPS	
Tupelo, Miss.	5 15p	6 42p		2	819		
Tuscaloosa, Ala.	10 50a 12 40p 5 15p 8 30p	10 34a 12 45p 5 23p 8 02p	Ex Sa	0 1 0 0	137 135 819 145		
University/Oxford, Miss.	7 10a	10 00a	Ex Su	3	241/833	MEM	S/
Valdosta, Ga.	10 50a 10 50a 4 10p 8 00p	12 51p 12 51p 5 22p 9 32p	Ex Sa Su Sa Su Only Ex Sa	2 2 0 1	823 805 827 829		

	Leave	Arrive	Freq.	Stops	Flight No.	Connect At	Meal
<b>From Baton Rouge, La.</b>							
<b>To</b>							
Anniston, Ala.	6 45a	12 06p		5	334/812	MEM	S/
Atlanta, Ga.	11 16a 2 01p 6 05p	3 25p 7 29p 11 25p	Ex Sa	3 3 5	331/516 339/142 350/416	MSY MSY MEM	/S /S
Birmingham, Ala.	2 01p	5 45p		2	339/616	MSY	
Chattanooga, Tenn.	6 05p	10 43p	Ex Sa	4	350/416	MEM	
Chicago, Ill. (Midway Airport)	6 45a 1 05p 6 05p	10 11a 6 00p 9 36p		3 3 3	334 340/220 350/174	MEM MEM	SB /S
Dothan, Ala.	11 16a	1 36p		2	331/516	MSY	/S
Eglin A.F.B./Fort Walton Beach, Fla.	11 16a	12 52p		1	331/516	MSY	/S
Florence/Sheffield/Tuscumbia, Ala.	6 05p	9 37p		3	350/846	MEM	
Greenville, Miss.	6 45a 1 05p 6 05p	7 55a 2 13p 7 13p		1 1 1	334 340 350		S
Gulfport/Biloxi, Miss.	2 01p	4 45p		1	339/142	MSY	
Hattiesburg, Miss.	2 01p	3 35p	Ex Sa	1	339/836	MSY	
Huntsville/Decatur, Ala.	6 45a 2 01p 6 05p	10 03a 5 33p 9 03p	Ex Su Ex Sa	3 3 3	334/413 339/244 350/416	MEM MSY MEM	S/
Jackson/Vicksburg, Miss.	2 01p	3 35p		1	339/244	MSY	

**357-1488**  
For Air Freight Call 356-6617

	Leave	Arrive	Freq.	Stops	Flight No.	Connect At	Meal
Jackson, Tenn.	6 45a 6 05p	10 12a 9 25p	Ex Sa Ex Sa	3 3	334/842 350/358	MEM MEM	S/
Knoxville, Tenn.	6 05p	11 53p	Ex Sa	5	350/358	MEM	
Laurel, Miss.	2 01p	4 02p	Ex Sa	2	339/836	MSY	
Memphis, Tenn.	6 45a 1 05p 2 01p 6 05p	8 35a 2 58p 4 28p 7 55p		2 2 2 2	334 340 339/244 350		S MSY
Mobile, Ala./Pascagoula, Miss.	2 01p	4 45p		1	339/616	MSY	
Monroe, La.	6 45a 1 05p 6 05p	7 16a 1 36p 6 36p		0 0 0	334 340 350		S
Nashville, Tenn.	6 45a 2 01p 6 05p	11 10a 6 35p 10 05p	Ex Sa Ex Sa	4 3 4	334/842 339/616 350/358	MEM MSY MEM	S/
New Orleans, La.	11 16a 2 01p 10 24p	11 39a 2 24p 10 47p		0 0 0	331 339 353		
Shelbyville/Tullahoma, Tenn.	6 45a	11 54a	Ex Sa	5	334/842	MEM	S/
St. Louis, Mo.	6 45a 1 05p 6 05p	9 43a 5 48p 9 33p		3 3 3	334/234 340/415 350	MEM MEM	S/S
Tupelo, Miss.	6 45a 6 05p	10 20a 9 00p		3 3	334/812 350/826	MEM MEM	S/
University/Oxford, Miss.	6 45a	10 00a	Ex Su	3	334/833	MEM	S/
<b>From Biloxi, Miss. (See Gulfport/Biloxi, Miss.)</b>							
<b>864-2323</b>							
<b>From Birmingham, Ala.</b>							
<b>To</b>							
<b>252-4124</b> For Air Freight Call 592-9618							
Albany, Ga.	7 55a	10 55a		1	140/513	ATL	S/
Anderson, S.C.	7 55a	12 43p		2	140/825	ATL	S/
Athens, Ga.	7 55a	11 58a		1	140/825	ATL	S/
Atlanta, Ga.	7 55a	9 30a		0	140		S
Charleston, S.C.	7 55a	12 03p		2	140/849	ATL	S/
Charlotte, N.C.	7 55a	1 53p		4	140/825	ATL	S/
Chicago, Ill. (Midway Airport)	7 55a 10 05a 3 37p	10 11a 1 10p 6 00p		1 1 1	234/334 212/210 220	MEM MEM	S/B /L S
Columbia, S.C.	7 55a	11 09a		1	140/849	ATL	S/
Columbus, Ga.	7 55a 7 55a	11 26a 11 26a	Ex Sa Su Sa Su Only	1 1	140/823 140/805	ATL ATL	S/ S/
Dothan, Ala.	7 55a	10 27a		2	140/513	ATL	S/
Eglin A.F.B./Fort Walton Beach, Fla.	7 55a 5 00p	10 19a 7 20p		1 1	140/511 617/227	ATL MOB	S/
Golden Triangle Regional Airport, Miss.	12 25p	1 15p		1	135		
Greenville, Miss.	7 55a 10 05a	9 45a 12 30p		1 1	234/331 212/339	MEM MEM	S/
Greenwood, Miss.	7 55a 3 37p	10 39a 6 44p	Ex Su Ex Sa	2 2	234/833 220/837	MEM MEM	S/
Greenwood, S.C.	7 55a	1 06p		3	140/825	ATL	S/
Gulfport/Biloxi, Miss.	5 00p	6 38p		1	617/174	MOB	
Jackson, Tenn.	7 55a 10 05a	10 12a 12 55p	Ex Sa	1	234/842 212/414	MEM MEM	S/
Jacksonville, Fla.	7 55a 2 25p 8 30p	1 47p 4 25p 10 30p	Ex Sa Su	4 0 0	140/823 235 237	ATL	S/
Knoxville, Tenn.	8 02p	11 53p	Ex Sa	1	228/358	BNA	





# Southern is going your way

from  
**Birmingham**

Non-stop  
**Orlando**  
**Jacksonville**  
**Nashville**  
**Atlanta**  
**Memphis**  
**Mobile**

from  
**Jacksonville**

Non-stop  
**Birmingham**

One-stop  
**Memphis**

Direct Service  
**St. Louis**

from  
**Atlanta**

Non-stop  
**Nashville**  
**Greenville-Spartanburg**  
**Mobile**  
**Birmingham**

from  
**New Orleans**

Non-stop  
**Memphis**  
**Jackson, Miss.**  
**Mobile**

Direct Flights  
**Chicago**  
**Nashville**

One-stop  
**Birmingham**  
**St. Louis**

from  
**Mobile**

**Nashville**  
**Miami**  
**Orlando**  
**Chicago**  
**Washington**  
**New York**  
**Atlanta**  
**Birmingham**  
**Memphis**

from  
**St. Louis**

Non-stop  
**Memphis**

One-stop  
**New Orleans**  
**Birmingham**

Direct Service  
**Jacksonville**

from  
**Miami**

Non-stop  
**Orlando**

One-stop  
**Memphis**  
**Birmingham**  
**Tallahassee**

Direct Service  
**Nashville**  
**Mobile**

from  
**Chicago**

Non-stop  
**Memphis**

One-stop  
**Birmingham**  
**Jackson, Miss.**

from  
**Memphis**

Non-stop  
**St. Louis**  
**Chicago**  
**Orlando**  
**New Orleans**  
**Chattanooga**  
**Jackson, Miss.**  
**Birmingham**

One-stop  
**Jacksonville**  
**Miami**  
**Knoxville**

from  
**Nashville**

Non-stop  
**Atlanta**  
**Birmingham**  
**Knoxville**

Direct Service  
**Miami**  
**Orlando**  
**Mobile**  
**New Orleans**



	Leave	Arrive	Freq.	Stops	Flight No.	Connect At	Meal
<b>From Birmingham, Ala. (Cont.)</b>							
<b>To</b>							
Memphis, Tenn.	7 55a 10 05a 12 25p 3 37p 5 12p	8 38a 10 48a 1 59p 4 20p 5 55p		0	234 212 135 220 238		S
Miami, Fla.	8 20a 10 10a 4 41p 5 00p	11 28a 2 20p 8 17p 10 39p		1 3 2 3	215 211 229 617/227	MOB	B S D
Mobile, Ala./Pascagoula, Miss.	7 28a 5 00p	8 10a 5 42p		0	131 617		S
Monroe, La.	7 55a 10 05a	10 18a 1 03p		2	234/331 212/339	MEM MEM	S/ /
Montgomery, Ala.	10 10a 4 41p	10 35a 5 06p		0	211 229		
Moultrie/Thomasville, Ga.	7 55a 7 55a	12 22p 12 22p	Ex Sa Su Sa Su Only	2	140/823 140/805	ATL ATL	S/ S/
Nashville, Tenn.	6 00p 8 02p	6 35p 8 37p		0	616 228		
New Orleans, La.	7 28a 5 00p	8 55a 6 25p		1	131 617		S
Orlando, Fla.	8 20a 10 10a 4 41p 5 00p	10 34a 1 25p 7 22p 9 44p		0 2 1 2	215 211 229 617/227	MOB	B S D
Panama City, Fla.	7 55a	10 52a		2	140/511	ATL	S/
St. Louis, Mo.	7 55a 10 05a 3 37p 5 12p	9 43a 12 50p 5 48p 7 03p		1 1 1 1	234 212/508 220/415 238	MEM MEM	S /S
Tallahassee, Fla.	10 10a	12 27p		1	211		
Tri Cities, Tenn., Va.	8 02p	12 30a	Ex Sa	2	228/358	BNA	
Tuscaloosa, Ala.	12 25p	12 45p		0	135		
University/Oxford, Miss.	7 55a 3 37p	10 00a 6 05p	Ex Su Ex Sa	1	234/833 220/837	MEM MEM	S/ /
Valdosta, Ga.	7 55a 7 55a	12 51p 12 51p	Ex Sa Su Sa Su Only	3	140/823 140/805	ATL ATL	S/ S/

**From**  
**Bristol, Tenn.-Va.**  
(See Tri-cities) **323-4144**

**From**  
**Charleston, S.C.**  
**To** **800-241-2521**  
For Air Freight Call 747-4024

Atlanta, Ga.	1 10p	3 13p		1	848		
Columbia, S.C.	1 10p	1 47p		0	848		
Dothan, Ala.	1 10p	4 22p		2	848/855	ATL	
Eglin A.F.B./Fort Walton Beach, Fla.	1 10p	5 29p		3	848/519	ATL	
Golden Triangle Regional Airport, Miss.	1 10p	6 01p		3	848/819	ATL	
Huntsville/Decatur, Ala.	1 10p	4 38p		2	848/169	ATL	
Memphis, Tenn.	1 10p	7 24p		5	848/819	ATL	
Nashville, Tenn.	1 10p	3 49p		2	848/617	ATL	
Panama City, Fla.	1 10p	4 58p		2	848/519	ATL	
Tupelo, Miss.	1 10p	6 42p		4	848/819	ATL	
Tuscaloosa, Ala.	1 10p	5 23p		2	848/819	ATL	

**From**  
**Charlotte, N.C.**  
**To** **800-241-2521**  
For Air Freight Call 399-0511

Albany, Ga.	2 10p	7 11p	Ex Sa	4	872/861	ATL	
Anderson, S.C.	2 10p	3 15p		1	872		

	Leave	Arrive	Freq.	Stops	Flight No.	Connect At	Meal
Athens, Ga.	2 10p	3 50p		2	872		
Atlanta, Ga.	2 10p	4 35p		3	872		
Columbus, Ga.	2 10p	6 16p	Ex Sa	4	872/853	ATL	
Eglin A.F.B./Fort Walton Beach, Fla.	2 10p	5 29p		5	872/519	ATL	
Golden Triangle Regional Airport, Miss.	2 10p	6 01p		5	872/819	ATL	
Greenwood, S.C.	2 10p	2 47p		0	872		
Gulfport/Biloxi, Miss.	2 10p	6 38p		5	872/174	ATL	
Huntsville/Decatur, Ala.	2 10p	4 38p		4	872/169	ATL	
Mobile, Ala./Pascagoula, Miss.	2 10p	6 03p		4	872/174	ATL	
Nashville, Tenn.	2 10p	5 20p		5	872/169	ATL	
Panama City, Fla.	2 10p	4 58p		4	872/519	ATL	
Tuscaloosa, Ala.	2 10p	5 23p		4	872/819	ATL	

**From**  
**Chattanooga, Tenn.**  
**To** **265-4536**  
For Air Freight Call 894-0002

Atlanta, Ga.	10 58p	11 25p	Ex Sa	0	416		
Baton Rouge, La.	7 55a	11 06a	Ex Su	4	241/331	MEM	S/
Chicago, Ill. (Midway Airport)	7 55a 4 33p	10 11a 6 00p	Ex Su	2 1	241/334 415/220	MEM MEM	S/B /S
Greenville, Miss.	7 55a	9 45a	Ex Su	2	241/331	MEM	S/
Greenwood, Miss.	7 55a 4 33p	10 39a 6 44p	Ex Su Ex Sa	3 2	241/833 415/837	MEM MEM	S/ /
Gulfport/Biloxi, Miss.	7 55a 4 33p	11 25a 7 35p	Ex Su	3 2	241/321 415/520	MEM MEM	S/ /
Huntsville/Decatur, Ala.	7 55a	7 21a	Ex Su	0	241		S
Jackson/Vicksburg, Miss.	7 55a 4 33p	11 19a 5 53p	Ex Su	4 1	241/833 415/227	MEM MEM	S/ /
Knoxville, Tenn.	1 32p	1 57p		0	412		
Laurel, Miss.	4 33p	9 04p	Ex Sa	5	415/837	MEM	
Memphis, Tenn.	7 55a 4 33p	8 18a 4 20p	Ex Su	1 0	241 415		S
Mobile, Ala./Pascagoula, Miss.	7 55a 4 33p	11 05a 6 36p	Ex Su	3 2	241/413 415/227	MEM MEM	S/ /
Monroe, La.	7 55a	10 18a	Ex Su	3	241/331	MEM	S/
Natchez, Miss.	7 55a 4 33p	12 07p 8 12p	Ex Su Ex Sa	5 4	241/833 415/837	MEM MEM	S/ /
New Orleans, La.	7 55a 4 33p	10 08a 6 13p	Ex Su	2 1	241/321 415/520	MEM MEM	S/ /
St. Louis, Mo.	7 55a 4 33p	9 43a 5 48p	Ex Su	2 1	241/234 415	MEM	S/S
Tri Cities, Tenn., Va.	1 32p	2 39p		1	412		
Tupelo, Miss.	7 55a	10 20a	Ex Su	2	241/812	MEM	S/
University/Oxford, Miss.	7 55a 4 33p	10 00a 6 05p	Ex Su Ex Sa	2 1	241/833 415/837	MEM MEM	S/ /

**From**  
**Chicago, Ill. (Midway Airport)**  
**To** **726-6273**  
Surrounding Areas Dial  
**800-241-9385**  
For Air Freight Call 471-3525

Anniston, Ala.	7 30a	12 06p		3	211/812	MEM	B/
Atlanta, Ga.	7 30a 10 55a 1 50p 6 40p	2 00p 3 34p 7 30p 11 25p		4 3 2 3	211/812 3 414 345/244 353/416	MEM MEM MEM	B/ /
Baton Rouge, La.	7 30a 1 50p 6 40p	11 06a 5 50p 10 14p		3 3 3	211/331 345/350 353	MEM MSY	B/ D
Birmingham, Ala.	7 30a 10 55a 1 50p	9 56a 2 11p 4 26p		1 1 1	211 414/235 345/229	MEM MEM	B



	Leave	Arrive	Freq.	Stops	Flight No.	Connect At	Meal
Chattanooga, Tenn.	6 40p	10 43p	Ex Sa	2	353/416	MEM	D/
Columbus, Ga.	10 55a	6 16p	Ex Sa	4	414/853	ATL	
Crossville, Tenn.	7 30a	12 29p	Ex Sa	4	211/842	MEM	B/
Dothan, Ala.	10 55a 1 50p	4 22p 9 31p	4	414/855 345/520	ATL MEM		
Eglin A.F.B./Fort Walton Beach, Fla.	1 50p	7 20p		3	345/227	MEM	
Florence/Sheffield/Tuscumbia, Ala.	6 40p	9 37p		1	353/846	MEM	D/
Golden Triangle Regional Airport, Miss.	7 30a 6 40p	10 55a 9 17p		2 1	211/812 353/355	MEM MEM	B/ D/
Greenville, Miss.	7 30a 6 40p	9 45a 8 55p		1 1	211/331 353	MEM	B/ D
Greenville/Spartanburg, S.C.	10 55a	4 40p		4	414/173	ATL	
Greenwood, Miss.	7 30a	10 39a	Ex Su	2	211/833	MEM	B/
Gulfport/Biloxi, Miss.	7 30a 1 50p	11 25a 7 35p		2	211/321 345/520	MEM MEM	B/
Huntsville/Decatur, Ala.	7 30a 1 50p 6 40p	10 03a 5 33p 9 03p	Ex Su Ex Sa	1 1 1	211/413 345/244 353/416	MEM MEM MEM	B/ B/ D/
Jackson/Vicksburg, Miss.	7 30a 1 50p	11 19a 4 03p	Ex Su	3	211/833 345	MEM	B/
Jackson, Tenn.	7 30a 10 55a 6 40p	10 12a 12 55p 9 25p	Ex Sa Ex Sa	1 1 1	211/842 414 353/358	MEM MEM	B/ D/
Jacksonville, Fla.	10 55a	4 25p		2	414/235	MEM	
Knoxville, Tenn.	10 55a 6 40p	4 53p 11 53p	Ex Sa	3 3	414/418 353/358	BNA MEM	D/
Laurel, Miss.	7 30a	12 59p	Ex Su	5	211/833	MEM	B/
Memphis, Tenn.	7 30a 10 55a 1 50p 6 40p	8 50a 12 10p 3 05p 7 55p		0 0 0 0	211 414 345 353		B D
Meridian, Miss.	6 40p	9 55p		2	353/355	MEM	D/
Miami, Fla.	7 30a 7 30a 1 50p	1 00p 2 20p 8 17p		2 5 4	211/219 211 345/229	MEM MEM	B/B BS /D
Mobile, Ala./Pascagoula, Miss.	7 30a 7 30a 1 50p	11 05a 12 00n 6 36p	Ex Su	2 3 2	211/413 211/321 345/227	MEM MEM MEM	B/ B/
Monroe, La.	7 30a 6 40p	10 18a 9 28p		2 2	211/331 353	MEM	B/ D
Montgomery, Ala.	7 30a 1 50p	10 35a 5 06p		2 2	211 345/229	MEM	B
Nashville, Tenn.	7 30a 10 55a 6 40p	11 10a 1 35p 10 05p	Ex Sa Ex Sa	2 2 2	211/842 414 353/358	MEM MEM	B/ D/
Natchez, Miss.	7 30a	12 07p	Ex Su	4	211/833	MEM	B/
New Orleans, La.	7 30a 1 50p 6 40p	10 08a 4 50p 10 47p		2 2 4	211/321 345 353	MEM	B/ D
Orlando, Fla.	7 30a 7 30a 1 50p	12 05p 1 25p 7 22p		1 4 3	211/219 211 345/229	MEM MEM	B/B BS /D
Panama City, Fla.	10 55a	4 58p		4	414/519	ATL	
Shelbyville/Tullahoma, Tenn.	7 30a 10 55a	11 54a 2 34p	Ex Sa Ex Sa	3 3	211/842 414/843	MEM BNA	B/
Tallahassee, Fla.	7 30a	12 27p		3	211		B
Tri Cities, Tenn., Va.	10 55a 6 40p	5 32p 12 30a	Ex Sa	4 4	414/418 353/358	BNA MEM	D/
Tupelo, Miss.	7 30a 10 55a 6 40p	10 20a 1 20p 9 00p		1 1 1	211/812 414/834 353/828	MEM MEM MEM	B/ B/ D/
Tuscaloosa, Ala.	6 40p	9 51p		2	353/828	MEM	D/
University/Oxford, Miss.	7 30a	10 00a	Ex Su	1	211/833	MEM	B/
Valdosta, Ga.	10 55a	5 22p	Ex Sa	4	414/827	ATL	

From	Leave	Arrive	Freq.	Stops	Flight No.	Connect At	Meal
<b>Columbia, S.C.</b>							
To							
Atlanta, Ga.	2 02p	3 13p		0	848		
Charleston, S.C.	11 24a	12 03p		0	849		
Dothan, Ala.	2 02p	4 22p		1	848/855	ATL	
Eglin A.F.B./Fort Walton Beach, Fla.	2 02p	5 29p		2	848/519	ATL	
Golden Triangle Regional Airport, Miss.	2 02p	6 01p		2	848/819	ATL	
Huntsville/Decatur, Ala.	2 02p	4 38p		1	848/169	ATL	
Memphis, Tenn.	2 02p	7 24p		4	848/819	ATL	
Nashville, Tenn.	2 02p	3 49p		1	848/617	ATL	
Panama City, Fla.	2 02p	4 58p		1	848/519	ATL	
Tupelo, Miss.	2 02p	6 42p		3	848/819	ATL	
Tuscaloosa, Ala.	2 02p	5 23p		1	848/819	ATL	
Valdosta, Ga.	2 02p	5 22p	Ex Sa	1	848/827	ATL	

**254-5181**  
For Air Freight Call 794-2071

From	Leave	Arrive	Freq.	Stops	Flight No.	Connect At	Meal
<b>Columbus, Ga.</b>							
To							
Albany, Ga.	9 45a 11 03p	10 10a 11 28p	Ex Sa Su	0	881 719		
Anderson, S.C.	6 35p	9 34p	Ex Sa	2	858/871	ATL	
Anniston, Ala.	2 07p 8 13p	3 07p 9 07p	Ex Sa	1	216/818 864/820	ATL ATL	
Athens, Ga.	6 35p	8 54p	Ex Sa	1	858/871	ATL	
Atlanta, Ga.	2 07p 6 35p 8 13p	2 35p 7 15p 8 53p	Ex Sa Ex Sa	0 0 0	216 858 864		
Dothan, Ala.	2 01p 11 03p	1 25p 11 00p		0 1	713 719		
Eglin A.F.B./Fort Walton Beach, Fla.	2 01p 11 03p	2 00p 11 35p		1 2	713 719		
Florence/Sheffield/Tuscumbia, Ala.	6 35p	9 12p	Ex Sa	2	858/249	ATL	
Gadsden, Ala.	2 07p 8 13p	3 36p 9 36p	Ex Sa	2 2	216/818 864/820	ATL ATL	
Golden Triangle Regional Airport, Miss.	6 35p	8 35p	Ex Sa	2	858/145	ATL	
Greenville/Spartanburg, S.C.	2 07p 6 35p	4 40p 9 10p	Ex Sa	1 1	216/173 858/177	ATL ATL	
Greenwood, S.C.	6 35p	10 02p	Ex Sa	3	858/871	ATL	
Gulfport/Biloxi, Miss.	2 01p 8 23p	2 58p 8 37p		2 1	713/517 717	VPS	
Huntsville/Decatur, Ala.	6 35p	8 33p	Ex Sa	1	858/249	ATL	
Jacksonville, Fla.	11 40a	1 47p	Ex Sa Su	2	823		
Meridian, Miss.	6 35p	9 15p	Ex Sa	3	858/145	ATL	
Miami, Fla.	2 01p 3 30p	5 48p 6 38p		4 3	713 225		
Mobile, Ala./Pascagoula, Miss.	8 23p	8 03p		0	717		
Moultrie/Thomasville, Ga.	11 40a 11 40a	12 22p 12 22p	Ex Sa Su Sa Su Only	0 0	823 805		
Nashville, Tenn.	2 07p	3 49p		1	216/617	ATL	
New Orleans, La.	2 01p 8 23p	3 35p 9 15p		3 2	713/517 717	VPS	
New York, N.Y./Newark, N.J.	7 50a 2 10p 4 55p	10 19aⓄ 4 40pⓄ 7 30pⓄ		1 1 1	710 321 716	B L D	
Orlando, Fla.	2 01p 3 30p	4 53p 5 43p		3 2	713 225		
Panama City, Fla.	3 30p	3 04p		0	225		



	Leave	Arrive	Freq.	Stops	Flight No.	Connect At	Meal
<b>From Columbus, Ga. (Cont.)</b>							
To							
Tallahassee, Fla.	2 01p 3 30p	3 54p 4 45p		2	713 225		
Tuscaloosa, Ala.	6 35p	8 02p	Ex Sa	1	858/145	ATL	
Valdosta, Ga.	11 40a 11 40a	12 51p 12 51p	Ex Sa Su Sa Su Only	1	823 805		
Washington, D.C. (Dulles Intl Airport)	7 50a 2 10p 4 55p	9 13a 3 33p 6 18p		0	710 321 716		B L D

**From Columbus, Miss.** **328-4900**  
(See Golden Triangle Regional Airport, Miss.)

**From Crossville, Tenn.** **484-5022**  
To

Jackson, Tenn.	12 55p	4 18p	Ex Sa	2	845/847	BNA	
Memphis, Tenn.	12 55p	5 00p	Ex Sa	3	845/847	BNA	
Mobile, Ala./Pascagoula, Miss.	12 55p	5 42p	Ex Sa	3	845/617	BNA	
Nashville, Tenn.	12 55p	1 54p	Ex Sa	1	845		
New Orleans, La.	12 55p	6 25p	Ex Sa	4	845/617	BNA	
Shelbyville/Tullahoma, Tenn.	12 55p	1 25p	Ex Sa	0	845		

**From Decatur, Ala.** **353-2690**  
(See Huntsville/Decatur, Ala.)

**From Dothan, Ala.** **792-3126**  
To **For Air Freight Call 983-4524**

Albany, Ga.	5 38a 10 50a	7 00a 12 12p		0	710 514		
Anderson, S.C.	7 36a 4 45p	12 43p 9 34p	Ex Sa	2	510/825 856/871	ATL ATL	S/ S/
Anniston, Ala.	7 36a	10 57a	Th Only	1	510/803	ATL	S/
Athens, Ga.	7 36a 4 45p 4 45p	11 58a 8 54p 8 54p	Ex Sa Sa Only	1 1 1	510/825 856/871 856/883	ATL ATL ATL	S/ S/ S/
Atlanta, Ga.	5 38a 7 36a 10 50a 1 46p 4 45p 9 41p	8 40a 9 15a 12 57p 3 25p 6 43p 11 20p		1 0 0 0 0 0	710/852 510 514 516 856 520	ABY S	/S S
Baton Rouge, La.	1 34p	5 50p		3	517/350	MSY	
Charleston, S.C.	7 36a	12 03p		2	510/849	ATL	S/
Charlotte, N.C.	7 36a	1 53p		4	510/825	ATL	S/
Columbia, S.C.	7 36a	11 09a		1	510/849	ATL	S/
Columbus, Ga.	5 38a 3 16p	7 35a 4 40p		1 0	710 716		
Eglin A.F.B./Fort Walton Beach, Fla.	8 09a 1 34p 1 35p 11 10p	8 34a 1 59p 2 00p 11 35p		0 0 0 0	508 517 713 719		S
Florence/Sheffield/Tuscumbia, Ala.	10 50a 4 45p	1 48p 9 12p		3 2	514/245 856/249	ATL ATL	
Golden Triangle Regional Airport, Miss.	1 46p 4 45p	6 01p 8 35p	Ex Sa	2	516/819 856/145	ATL ATL	
Greenville, Miss.	8 09a	12 30p		4	508/339	MEM	S/
Greenville/Spartanburg, S.C.	1 46p 4 45p 4 45p	4 40p 9 10p 9 39p	Ex Sa Sa Only	1 1 2	516/173 856/177 856/883	ATL ATL ATL	
Greenwood, S.C.	7 36a 4 45p	1 06p 10 02p	Ex Sa	3 3	510/825 856/871	ATL ATL	S/ S/

	Leave	Arrive	Freq.	Stops	Flight No.	Connect At	Meal
<b>From Gulfport/Biloxi, Miss.</b>							
	8 09a 1 34p 1 35p	9 27a 2 58p 2 58p		1	508 517 713/517		S VPS
<b>Huntsville/Decatur, Ala.</b>							
	7 36a 10 50a 1 46p 4 45p	9 58a 1 13p 4 38p 7 30p		1 2 1 1	510/163 514/245 516/169 856/869	ATL ATL ATL ATL	S/ S/
<b>Jackson, Tenn.</b>							
	8 09a	12 55p		4	508/414	MEM	S/
<b>Memphis, Tenn.</b>							
	8 09a 1 46p 4 45p	11 38a 7 24p 8 52p		3 4 2	508 516/819 856/869	ATL ATL	S
<b>Meridian, Miss.</b>							
	7 36a 4 45p	11 09a 9 15p	Ex Sa	2	510/137 856/145	ATL ATL	S/
<b>Miami, Fla.</b>							
	1 35p	5 48p		3	713		
<b>Mobile, Ala./Pascagoula, Miss.</b>							
	8 09a 1 34p 4 45p	9 52a 5 20p 8 28p		1 2 1	508/210 517/142 856/521	VPS GPT ATL	S/ S/
<b>Monroe, La.</b>							
	1 34p	6 36p		4	517/350	MSY	
<b>Nashville, Tenn.</b>							
	10 50a 1 46p	2 24p 3 49p		2 1	514/136 516/617	ATL ATL	
<b>New Orleans, La.</b>							
	8 09a 1 34p 1 35p	10 05a 3 35p 3 35p		2 2 2	508 517 713/517		S VPS
<b>New York, N.Y./Newark, N.J.</b>							
	5 38a 3 16p	10 19a 7 30p		3 2	710 716		B D
<b>Orlando, Fla.</b>							
	1 35p	4 53p		2	713		
<b>Panama City, Fla.</b>							
	8 09a 9 10p	10 52a 9 33p		1 0	508/511 523	VPS	S/
<b>St. Louis, Mo.</b>							
	8 09a	12 50p		4	508		S
<b>Tallahassee, Fla.</b>							
	1 35p	3 54p		1	713		
<b>Tupelo, Miss.</b>							
	1 46p	6 42p		3	516/819	ATL	
<b>Tuscaloosa, Ala.</b>							
	7 36a 1 46p 4 45p	10 34a 5 23p 8 02p	Ex Sa	1 1 1	510/137 516/819 856/145	ATL ATL ATL	S/ S/
<b>Washington, D.C. (Dulles Intl Airport)</b>							
	5 38a 3 16p	9 13a 6 18p		2 1	710 716		B D
<b>From Eglin A.F.B., Fla. Fort Walton Beach, Fla.</b>							
							<b>882-5542</b> <b>243-3175</b> Surrounding Areas Dial 800-241-2521 For Eglin A.F.B. Air Freight Call 882-5146 For Fort Walton Beach Air Freight Call 243-4413
<b>To</b>							
Albany, Ga.	5 00a	7 00a		1	710		
Anderson, S.C.	6 45a 5 46p	12 43p 9 34p	Ex Sa	3 2	512/825 519/871	ATL ATL	S/ S/
Anniston, Ala.	6 45a 5 46p	10 57a 9 07p	Th Only Ex Sa	2 1	512/803 519/820	ATL ATL	S/ S/
Athens, Ga.	6 45a 5 46p 5 46p	11 58a 8 54p 8 54p	Ex Sa Sa Only	2 1 1	512/825 519/871 519/883	ATL ATL ATL	S/ S/ S/
Atlanta, Ga.	5 00a 6 45a 10 31a 1 10p 2 35p 5 46p 9 05p	8 40a 9 25a 12 57p 3 25p 6 43p 7 40p 11 20p		2 1 1 1 0 0 1	710/852 512 511 516 716/856 519 520	ABY S	/S S
Baton Rouge, La.	2 20p	5 50p		2	517/350	MSY	
Charleston, S.C.	6 45a	12 03p		3	512/849	ATL	S/
Charlotte, N.C.	6 45a	1 53p		5	512/825	ATL	S/
Chicago, Ill. (Midway Airport)	9 22a	1 10p		3	210		L
Columbia, S.C.	6 45a	11 09a		2	512/849	ATL	S/
Columbus, Ga.	5 00a 2 35p	7 35a 4 40p		2 1	710 716		



# Southern Charter Service

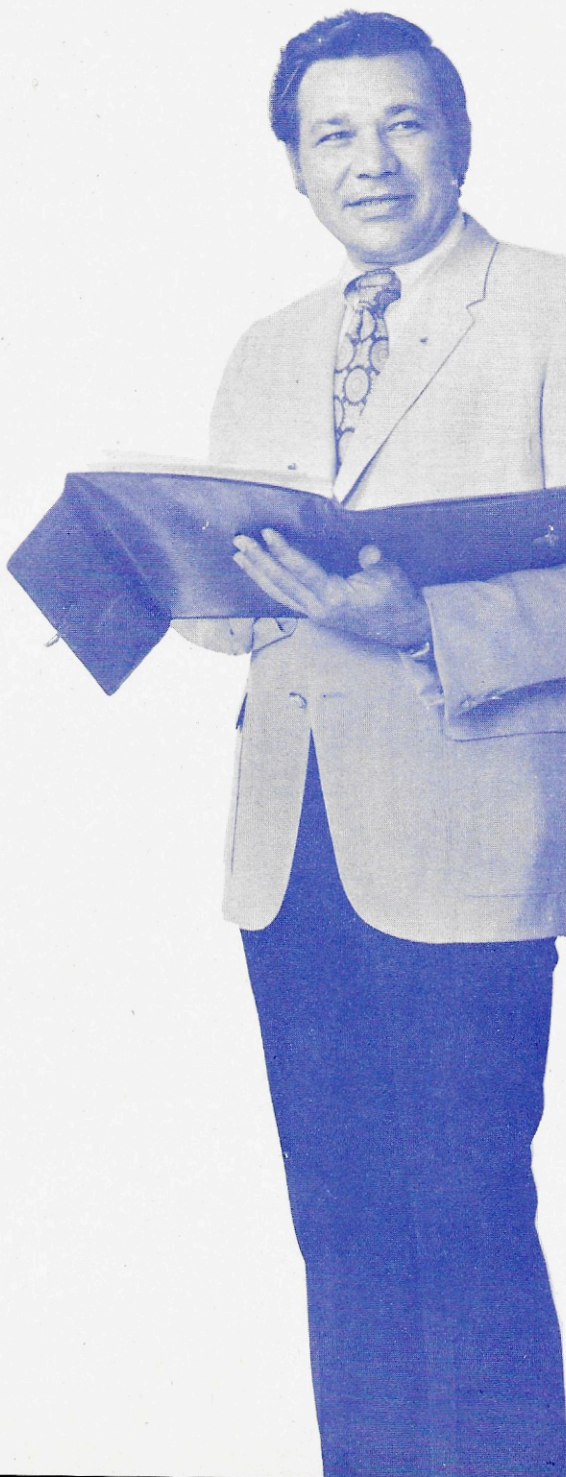
going your way  
anytime...  
anyplace in  
Continental U.S.A.,  
Canada or  
the Bahamas

We know Your Way is more than a destination, so we assign a Charter Coordinator for every trip. When you're planning a special trip, Charter a Southern Jet with confidence...

Southern is going your way.

We offer roomier 2 and 3 seating in our one-class DC-9 CharterJets. Choose between 75 and 95 passenger jets.

For Rates and other Information contact:  
**Southern Airways Charter Department**  
**Hartsfield Atlanta International Airport**  
**Atlanta, Georgia 30320**  
**Area Code (404) 767-0644**





From	Leave	Arrive	Freq.	Stops	Flight No.	Connect At	Meal
<b>From Eglin A.F.B., Fla. (Cont.)</b>							
To							
Dothan, Ala.	5 00a 1 10p 2 35p 9 05p	5 26a 1 36p 3 01p 9 31p		0	710 516 716 520		
Florence/Sheffield/ Tuscumbia, Ala.	10 31a 5 46p	1 48p 9 12p		3 2	511/245 519/249	ATL ATL	
Gadsden, Ala.	5 46p	9 36p	Ex Sa	2	519/820	ATL	
Golden Triangle Regional Airport, Miss.	1 10p 5 46p	8 01p 8 35p	Ex Sa	3 2	516/819 519/145	ATL ATL	
Greenville, Miss.	9 22a 2 20p	12 30p 7 13p		3 4	210/339 517/350	MEM MSY	
Greenville/Spartanburg, S.C.	1 10p 5 46p 5 46p	4 40p 9 10p 9 39p	Ex Sa Sa Only	2 2 1	516/173 519/177 519/883	ATL ATL ATL	
Greenwood, S.C.	6 45a 5 46p	1 06p 10 02p	Ex Sa	4 3	512/825 519/871	ATL ATL	S/
Gulfport/Biloxi, Miss.	8 49a 2 20p	9 27a 2 58p		0 0	508 517		S
Huntsville/Decatur, Ala.	6 45a 10 31a 1 10p 5 46p	9 58a 1 13p 4 38p 8 33p		2 2 2 1	512/163 511/245 516/169 519/249	ATL ATL ATL ATL	S/
Jackson/Vicksburg, Miss.	9 22a	10 36a		1	210		
Jackson, Tenn.	9 22a	12 55p		3	210/414	MEM	
Memphis, Tenn.	6 45a 8 49a 9 22a 1 10p 2 20p	10 33a 11 38a 11 28a 7 24p 7 55p		2 2 2 5 5	512/131 508 210 516/819 517/350	MOB S S ATL MSY	S/S S
Miami, Fla.	6 05a 2 20p 7 40p	9 59a 5 48p 10 39p		3 2 1	213 713 227		S
Mobile, Ala./Pascagoula, Miss.	6 45a 9 22a	7 15a 9 52a		0 0	512 210		S
Monroe, La.	2 20p	6 36p		3	517/350	MSY	
Nashville, Tenn.	10 31a 1 10p	2 24p 3 49p		2 2	511/136 516/617	ATL ATL	
New Orleans, La.	6 45a 8 49a 9 22a 2 20p	8 55a 10 05a 11 45a 3 35p	Ex Su	1 1 1 1	512/131 508 210/413 517	MOB S MOB	S/S S
New York, N.Y./Newark, N.J.	5 00a 2 35p	10 19a 7 30p		4 3	710 716	B D	
Orlando, Fla.	6 05a 2 20p 7 40p	9 04a 4 53p 9 44p		2 1 0	213 713 227		S
Panama City, Fla.	6 05a 10 31a	6 26a 10 52a		0 0	213 511		S
St. Louis, Mo.	6 45a 8 49a 9 22a	11 41a 12 50p 12 50p		3 3 3	512/131 508 210/508	MOB S MEM	S/S S /S
Tallahassee, Fla.	6 05a 2 20p	8 06a 3 54p		1 0	213 713		S
Tupelo, Miss.	1 10p	6 42p		4	516/819	ATL	
Tuscaloosa, Ala.	6 45a 1 10p 5 46p	10 34a 5 23p 8 02p	Ex Sa	2 2 1	512/137 516/819 519/145	ATL ATL ATL	S/
Washington, D.C. (Dulles Intl Airport)	5 00a 2 35p	9 13a 6 18p		3 2	710 716	B D	

From	Leave	Arrive	Freq.	Stops	Flight No.	Connect At	Meal
<b>From Florence, Ala. Sheffield, Ala. Tuscumbia, Ala. Muscle Shoals, Ala.</b>							
To							
							<b>383-4581 383-4581 383-4581 383-4581</b>
							For Air Freight Call 383-5078
Albany, Ga.	6 40a 2 05p	10 55a 7 11p	Ex Sa	2 2	240/513 242/861	ATL ATL	S/
Atlanta, Ga.	6 40a 2 05p	8 55a 4 20p		1	240 242		S
Baton Rouge, La.	7 10a	11 06a		3	841/331	MEM	S/
Charleston, S.C.	6 40a	12 03p		3	240/849	ATL	S/
Chicago, Ill. (Midway Airport)	7 10a	10 11a		1	841/334	MEM	S/B
Columbia, S.C.	6 40a	11 09a		2	240/849	ATL	S/
Columbus, Ga.	6 40a 2 05p	11 26a 11 26a 6 16p	Ex Sa Su Sa Su Only Ex Sa	2 2 2	240/823 240/805 242/853	ATL ATL ATL	S/ S/ S/
Dothan, Ala.	6 40a	10 27a		3	240/513	ATL	S/
Eglin A.F.B./Fort Walton Beach, Fla.	6 40a 2 05p	10 19a 5 29p		2 3	240/511 242/519	ATL ATL	S/
Greenville, Miss.	7 10a	9 45a		1	841/331	MEM	S/
Greenwood, Miss.	7 10a	10 39a	Ex Su	2	841/833	MEM	S/
Gulfport/Biloxi, Miss.	7 10a	11 25a		2	841/321	MEM	S/
Huntsville/Decatur, Ala.	6 40a 2 05p	7 00a 2 25p		0 0	240 242		S
Jackson/Vicksburg, Miss.	7 10a	11 19a	Ex Su	3	841/833	MEM	S/
Jackson, Tenn.	7 10a	10 12a	Ex Sa	1	841/842	MEM	S/
Jacksonville, Fla.	6 40a	1 47p	Ex Sa Su	5	240/823	ATL	S/
Laurel, Miss.	7 10a	12 59p	Ex Su	5	841/833	MEM	S/
Memphis, Tenn.	7 10a	8 00a		0	841		S
Miami, Fla.	7 10a	1 00p		2	841/219	MEM	S/B
Mobile, Ala./Pascagoula, Miss.	7 10a 7 10a	11 05a 12 00n	Ex Su	2 3	841/413 841/321	MEM MEM	S/ S/
Monroe, La.	7 10a	10 18a		2	841/331	MEM	S/
Moultrie/Thomasville, Ga.	6 40a 6 40a	12 22p 12 22p	Ex Sa Su Sa Su Only	3 3	240/823 240/805	ATL ATL	S/ S/
Natchez, Miss.	7 10a	12 07p	Ex Su	4	841/833	MEM	S/
New Orleans, La.	7 10a 2 05p	10 08a 6 13p		1 2	841/321 242/520	MEM HSV	S/ S/
Orlando, Fla.	7 10a	12 05p		1	841/219	MEM	S/B
Panama City, Fla.	6 40a 2 05p	10 52a 4 58p		3 2	240/511 242/519	ATL ATL	S/ S/
St. Louis, Mo.	7 10a	9 43a		1	841/234	MEM	S/S
Tupelo, Miss.	7 10a	10 20a		1	841/812	MEM	S/
University/Oxford, Miss.	7 10a	10 00a	Ex Su	1	841/833	MEM	S/
Valdosta, Ga.	6 40a 6 40a	12 51p 12 51p	Ex Sa Su Sa Su Only	4 4	240/823 240/805	ATL ATL	S/ S/
<b>From Fort Walton Beach, Fla. 243-3175</b> (See Eglin A.F.B., Fla.)							
<b>From Gadsden, Ala. 442-6370</b>							
To							
Albany, Ga.	6 05a 6 05a 12 10p 3 46p	10 10a 10 55a 3 50p 7 11p	Ex Sa Su Ex Su Ex Sa	3 2 2 1	811/881 811/513 817/525 818/861	ATL ATL ATL ATL	S/S S/ S/ S/
Anderson, S.C.	8 10a	12 43p	Su Only	3	801/825	ATL	S/



	Leave	Arrive	Freq.	Stops	Flight No.	Connect At	Meal
<b>Anniston, Ala.</b>	6 05a 8 10a 12 10p	6 24a 8 29a 12 29p	Ex Su Su Only	0	811 801 817	S S	
<b>Athens, Ga.</b>	8 10a	11 58a	Su Only	2	801/825	ATL	S/
<b>Atlanta, Ga.</b>	6 05a 8 10a 12 10p 3 46p 9 46p	8 15a 10 20a 2 25p 5 32p 11 30p	Ex Su Su Only Ex Sa	1	811 801 817 818 820	S S	
<b>Charleston, S.C.</b>	6 05a	12 03p	Ex Su	3	811/849	ATL	S/
<b>Charlotte, N.C.</b>	8 10a	1 53p	Su Only	5	801/825	ATL	S/
<b>Columbia, S.C.</b>	6 05a	11 09a	Ex Su	2	811/849	ATL	S/
<b>Columbus, Ga.</b>	6 05a 8 10a 12 10p	9 31a 11 26a 3 13p	Ex Sa Su Su Only	2	811/881 801/805 817/225	ATL ATL ATL	S/S S/
<b>Dothan, Ala.</b>	6 05a 12 10p	10 27a 4 22p	Ex Su	3	811/513 817/855	ATL ATL	S/
<b>Eglin A.F.B./Fort Walton Beach, Fla.</b>	6 05a	10 19a	Ex Su	2	811/511	ATL	S/
<b>Greenville/Spartanburg, S.C.</b>	12 10p	4 40p		2	817/173	ATL	
<b>Greenwood, S.C.</b>	8 10a	1 06p	Su Only	4	801/825	ATL	S/
<b>Moultrie/Thomasville, Ga.</b>	8 10a	12 22p	Su Only	3	801/805	ATL	S/
<b>Nashville, Tenn.</b>	12 10p	3 49p		2	817/617	ATL	
<b>Orlando, Fla.</b>	12 10p	5 43p		5	817/225	ATL	
<b>Panama City, Fla.</b>	6 05a 12 10p	10 52a 3 04p	Ex Su	3	811/511 817/225	ATL ATL	S/
<b>Tallahassee, Fla.</b>	12 10p	4 45p		4	817/225	ATL	
<b>Valdosta, Ga.</b>	8 10a 12 10p	12 51p 5 22p	Su Only Ex Sa	4	801/805 817/827	ATL ATL	S/

From

**Golden Triangle Regional Airport, Miss.**  
**Columbus, Miss.**  
**Starkville, Miss.**  
**West Point, Miss.**

**328-4900**  
**323-2622**  
**800-241-2521**

For Columbus Air Freight Call 328-2200  
For Starkville Air Freight Call 323-6500  
For West Point Air Freight Call 494-6500

To

<b>Albany, Ga.</b>	7 10a 11 10a	10 55a 3 50p	Ex Su	2	130/513 812/525	ATL ATL	S/
<b>Anderson, S.C.</b>	7 10a 3 55p	12 43p 9 34p	Ex Su Ex Sa	3	130/825 816/871	ATL ATL	S/
<b>Anniston, Ala.</b>	11 10a	12 06p		0	812		
<b>Athens, Ga.</b>	7 10a 3 55p 3 55p	11 58a 8 54p 8 54p	Ex Su Ex Sa Sa Only	2	130/825 816/871 816/883	ATL ATL ATL	S/
<b>Atlanta, Ga.</b>	7 10a 11 10a 3 55p	9 27a 2 00p 6 43p	Ex Su	1	130 812 816	S	
<b>Charleston, S.C.</b>	7 10a	12 03p	Ex Su	3	130/849	ATL	S/
<b>Charlotte, N.C.</b>	7 10a	1 53p	Ex Su	5	130/825	ATL	S/
<b>Chicago, Ill. (Midway Airport)</b>	7 41a 6 17p	10 11a 9 36p		1	332/334 819/174	MEM MEM	S/B
<b>Columbia, S.C.</b>	7 10a	11 09a	Ex Su	2	130/849	ATL	S/
<b>Columbus, Ga.</b>	7 10a 7 10a 11 10a	11 26a 11 26a 3 13p	Ex Sa Su Sa Only	2	130/823 130/805 812/225	ATL ATL ATL	S/ S/
<b>Crossville, Tenn.</b>	7 41a	12 29p	Ex Sa	4	332/842	MEM	S/
<b>Dothan, Ala.</b>	7 10a 11 10a	10 27a 4 22p	Ex Su	3	130/513 812/855	ATL ATL	S/
<b>Eglin A.F.B./Fort Walton Beach, Fla.</b>	7 10a 3 55p	10 19a 9 15p	Ex Su	2	130/511 816/521	ATL ATL	S/

	Leave	Arrive	Freq.	Stops	Flight No.	Connect At	Meal
<b>Greenville, Miss.</b>	7 41a 6 17p	9 45a 8 55p		1	332/331 819/353	MEM MEM	S/
<b>Greenville/Spartanburg, S.C.</b>	11 10a 3 55p 3 55p	4 40p 9 10p 9 39p	Ex Sa Sa Only	2 2 3	812/173 816/177 816/883	ATL ATL ATL	
<b>Greenwood, S.C.</b>	7 10a 3 55p	1 06p 10 02p	Ex Su Ex Sa	4	130/825 816/871	ATL ATL	S/
<b>Jackson, Tenn.</b>	7 41a 6 17p	10 12a 9 25p	Ex Sa Ex Sa	1 2	332/842 819/358	MEM MEM	S/
<b>Jacksonville, Fla.</b>	7 10a	1 47p	Ex Sa Su	5	130/823	ATL	S/
<b>Knoxville, Tenn.</b>	6 17p	11 53p	Ex Sa	4	819/358	MEM	
<b>Memphis, Tenn.</b>	7 41a 1 25p 6 17p	8 15a 1 59p 7 24p		0 0 1	332 135 819		S
<b>Meridian, Miss.</b>	8 50p 9 30p	9 15p 9 55p	Ex Sa	0	145 355		
<b>Miami, Fla.</b>	7 41a 1 25p	1 00p 8 17p		2 4	332/219 135/229	MEM MEM	S/B /D
<b>Monroe, La.</b>	7 41a 6 17p	10 18a 9 28p		2 3	332/331 819/353	MEM MEM	S/
<b>Moultrie/Thomasville, Ga.</b>	7 10a 7 10a 3 55p	12 22p 12 22p 9 03p	Ex Sa Su Sa Only	3 3 2	130/823 130/805 816/829	ATL ATL ATL	S/ S/
<b>Nashville, Tenn.</b>	7 41a 6 17p	11 10a 10 05p	Ex Sa Ex Sa	2 3	332/842 819/358	MEM MEM	S/
<b>Orlando, Fla.</b>	7 41a 11 10a 1 25p	12 05p 5 43p 7 22p		1 5 3	332/219 812/225 135/229	MEM ATL MEM	S/B /D
<b>Panama City, Fla.</b>	7 10a 11 10a	10 52a 3 04p	Ex Su	3	130/511 812/225	ATL ATL	S/
<b>St. Louis, Mo.</b>	7 41a 6 17p	9 43a 9 33p		1 2	332/234 819/350	MEM MEM	S/S
<b>Tallahassee, Fla.</b>	11 10a	4 45p		4	812/225	ATL	
<b>Tri Cities, Tenn., Va.</b>	6 17p	12 30a	Ex Sa	5	819/358	MEM	
<b>Tupelo, Miss.</b>	6 17p	6 42p		0	819		
<b>Tuscaloosa, Ala.</b>	7 10a 3 55p	7 30a 4 21p	Ex Su	0	130 816		S
<b>Valdosta, Ga.</b>	7 10a 7 10a 11 10a 3 55p	12 51p 12 51p 5 22p 9 32p	Ex Sa Su Sa Only Ex Sa	4 4 2 3	130/823 130/805 812/827 816/829	ATL ATL ATL ATL	S/ S/

From

**Greenville, Miss.**

**332-2612**  
For Greenville Air Freight Call 335-5362

To

<b>Atlanta, Ga.</b>	8 05a 2 28p 7 25p	2 00p 7 30p 11 25p	Ex Sa	4 2 3	334/812 340/244 350/416	MEM MEM MEM	
<b>Baton Rouge, La.</b>	9 55a 12 40p 9 05p	11 06a 1 51p 10 14p		1 1 1	331 339 353		
<b>Birmingham, Ala.</b>	8 05a 2 28p	9 56a 4 26p		1 1	334/211 340/229	MEM MEM	
<b>Chattanooga, Tenn.</b>	7 25p	10 43p	Ex Sa	2	350/416	MEM	
<b>Chicago, Ill. (Midway Airport)</b>	8 05a 2 28p 7 25p	10 11a 6 00p 9 36p		1 1 1	334 340/220 350/174	MEM MEM	B /S
<b>Crossville, Tenn.</b>	8 05a	12 29p	Ex Sa	4	334/842	MEM	
<b>Dothan, Ala.</b>	2 28p	9 31p		5	340/520	MEM	
<b>Eglin A.F.B./Fort Walton Beach, Fla.</b>	9 55a 2 28p	12 52p 7 20p		3 3	331/516 340/227	MSY MEM	/S
<b>Florence/Sheffield/Tuscumbia, Ala.</b>	7 25p	9 37p		1	350/846	MEM	
<b>Golden Triangle Regional Airport, Miss.</b>	8 05a 7 25p	10 55a 9 17p		2 1	334/812 350/355	MEM MEM	
<b>Gulfport/Biloxi, Miss.</b>	12 40p	4 45p		3	339/142	MSY	



	Leave	Arrive	Freq.	Stops	Flight No.	Connect At	Meal
<b>From Greenville, Miss. (Cont.)</b>							
<b>To</b>							
Huntsville/Decatur, Ala.	8 05a 2 28p 7 25p	10 03a 5 33p 9 03p	Ex Su Ex Sa	1	334/413 340/244 350/416	MEM MEM MEM	
Jackson, Tenn.	8 05a 7 25p	10 12a 9 25p	Ex Sa Ex Sa	1	334/842 350/358	MEM MEM	
Knoxville, Tenn.	7 25p	11 53p	Ex Sa	3	350/358	MEM	
Memphis, Tenn.	8 05a 2 28p 7 25p	8 35a 7 58p 7 55p		0	334 340 350		
Miami, Fla.	8 05a 2 28p	1 00p 8 17p		2	334/219 340/229	MEM MEM	/B /D
Mobile, Ala./Pascagoula, Miss.	12 40p	4 45p		3	339/616	MSY	
Monroe, La.	9 55a 12 40p 9 05p	10 18a 1 03p 9 28p		0	331 339 353		
Montgomery, Ala.	8 05a 2 28p	10 35a 5 06p		2	334/211 340/229	MEM MEM	
Nashville, Tenn.	8 05a 7 25p	11 10a 10 05p	Ex Sa Ex Sa	2	334/842 350/358	MEM MEM	
New Orleans, La.	9 55a 12 40p 9 05p	11 39a 2 24p 10 47p		2	331 339 353		
Orlando, Fla.	8 05a 2 28p	12 05p 7 22p		1	334/219 340/229	MEM MEM	/B /D
Shelbyville/Tullahoma, Tenn.	8 05a	11 54a	Ex Sa	3	334/842	MEM	
St. Louis, Mo.	8 05a 2 28p 7 25p	9 43a 5 48p 9 33p		1	334/234 340/415 350	MEM MEM	/S
Tallahassee, Fla.	8 05a	12 27p		3	334/211	MEM	
Tri Cities, Tenn., Va.	7 25p	12 30a	Ex Sa	4	350/358	MEM	
Tuscaloosa, Ala.	7 25p	9 51p		2	350/828	MEM	

**From Greenville, S.C. Spartanburg, S.C.**

**242-6535  
583-5441**

For Greenville Air Freight Call 233-0173  
For Spartanburg Air Freight Call 585-7692

**To**

Albany, Ga.	7 15a 7 40a 7 45a 5 00p	10 10a 10 55a 10 55a 7 11p	Ex Sa Su Ex Su Su Only Ex Sa	2	172/881 824/513 884/513 174/861	ATL ATL ATL ATL	S/S S/ S/ S/
Anderson, S.C.	7 40a	8 29a	Ex Su	1	824		S
Anniston, Ala.	7 40a	10 57a	Th Only	4	824/803	ATL	S/
Athens, Ga.	7 40a 7 45a	9 00a 8 20a	Ex Su Su Only	2	824 884		S S
Atlanta, Ga.	7 15a 7 40a 7 45a 5 00p	7 50a 9 40a 9 00a 5 35p	Ex Su Ex Su Su Only	0	172 824 884 174		S S S S
Columbus, Ga.	7 15a 7 40a 7 40a 7 45a	9 31a 11 26a 11 26a 11 26a	Ex Sa Su Ex Sa Su Sa Only Su Only	1	172/881 824/823 824/805 884/805	ATL ATL ATL ATL	S/S S/ S/ S/
Dothan, Ala.	7 15a 7 40a 7 45a	7 59a 10 27a 10 27a	Ex Su Ex Su Su Only	1	172/508 824/513 884/513	ATL ATL ATL	S/S S/ S/
Eglin A.F.B./Fort Walton Beach, Fla.	7 15a 7 40a 7 45a	8 34a 10 19a 10 19a	Ex Su Ex Su Su Only	2	172/508 824/511 884/511	ATL ATL ATL	S/S S/ S/
Greenwood, S.C.	7 40a	8 01a	Ex Su	0	824		S
Gulfport/Biloxi, Miss.	7 15a 7 40a 7 45a 5 00p	9 27a 11 02a 11 02a 6 38p	Ex Su Ex Su Su Only	3	172/508 824/133 884/133 174	ATL ATL ATL	S/S S/ S/ S/

	Leave	Arrive	Freq.	Stops	Flight No.	Connect At	Meal
Huntsville/Decatur, Ala.	7 40a 7 45a 5 00p	9 58a 9 58a 7 30p	Ex Su Su Only	4	824/163 884/163 174/869	ATL ATL ATL	S/ S/ S/
Meridian, Miss.	7 40a 7 45a	11 09a 11 09a	Ex Su Su Only	5	824/137 884/137	ATL ATL	S/ S/
Mobile, Ala./Pascagoula, Miss.	7 40a 7 45a 5 00p	10 27a 10 27a 6 03p	Ex Su Su Only	4	824/133 884/133 174	ATL ATL	S/ S/ S/
Moultrie/Thomasville, Ga.	7 40a 7 40a 7 45a	12 22p 12 22p 12 22p	Ex Sa Su Sa Only Su Only	5	824/823 824/805 884/805	ATL ATL ATL	S/ S/ S/
New Orleans, La.	7 15a 5 00p	10 05a 9 15p	Ex Su	4	172/508 174/717	ATL MOB	S/S
Panama City, Fla.	7 40a 7 45a	10 52a 10 52a	Ex Su Su Only	5	824/511 884/511	ATL ATL	S/ S/
Tuscaloosa, Ala.	7 40a 7 45a	10 34a 10 34a	Ex Su Su Only	4	824/137 884/137	ATL ATL	S/ S/
Valdosta, Ga.	7 45a	12 51p	Su Only	4	884/805	ATL	S/

**From Greenwood, Miss. 453-1623**

**To**

Atlanta, Ga.	11 12a 6 32p	3 34p 11 25p	Ex Su Ex Sa	4	830/414 836/416	MEM MEM	
Birmingham, Ala.	11 12a	2 11p	Ex Su	2	830/235	MEM	
Chattanooga, Tenn.	6 32p	10 43p	Ex Sa	3	836/416	MEM	
Chicago, Ill. (Midway Airport)	6 32p	9 36p	Ex Sa	2	836/174	MEM	
Florence/Sheffield/Tuscumbia, Ala.	6 32p	9 37p	Ex Sa	2	836/846	MEM	
Hattiesburg, Miss.	10 49a 6 54p	1 26p 9 30p	Ex Su Ex Sa	3	833 837		
Huntsville/Decatur, Ala.	6 32p	9 03p	Ex Sa	2	836/416	MEM	
Jackson/Vicksburg, Miss.	10 49a 6 54p	11 19a 7 24p	Ex Su Ex Sa	0	833 837		
Jackson, Tenn.	11 12a 6 32p	12 55p 9 25p	Ex Su Ex Sa	2	830/414 836/358	MEM MEM	
Knoxville, Tenn.	6 32p	11 53p	Ex Sa	4	836/358	MEM	
Laurel, Miss.	10 49a 6 54p	12 59p 9 04p	Ex Su Ex Sa	2	833 837		
Memphis, Tenn.	11 12a 6 32p	12 14p 7 39p	Ex Su Ex Sa	1	830 836		
Nashville, Tenn.	11 12a 6 32p	1 35p 10 05p	Ex Su Ex Sa	3	830/414 836/358	MEM MEM	
Natchez, Miss.	10 49a 6 54p	12 07p 8 12p	Ex Su Ex Sa	1	833 837		
New Orleans, La.	10 49a 6 54p	2 16p 10 20p	Ex Su Ex Sa	4	833 837		
St. Louis, Mo.	6 32p	9 33p	Ex Sa	2	836/350	MEM	
Tri Cities, Tenn., Va.	6 32p	12 30a	Ex Sa	5	836/358	MEM	
Tuscaloosa, Ala.	6 32p	9 51p	Ex Sa	3	836/828	MEM	
University/Oxford, Miss.	11 12a 6 32p	11 41a 7 01p	Ex Su Ex Sa	0	830 836		

**From Greenwood, S.C. 223-3291**

**To**

Albany, Ga.	8 11a 2 57p	10 55a 7 11p	Ex Su Ex Sa	3	824/513 872/861	ATL ATL	S/ S/
Anderson, S.C.	8 11a 2 57p	8 29a 3 15p	Ex Su	0	824 872		S
Anniston, Ala.	8 11a	10 57a	Th Only	3	824/803	ATL	S/
Athens, Ga.	8 11a 2 57p	9 00a 3 50p	Ex Su	1	824 872		S
Atlanta, Ga.	8 11a 2 57p	9 40a 4 35p	Ex Su	2	824 872		S
Charlotte, N.C.	1 16p	1 53p		0	825		



	Leave	Arrive	Freq.	Stops	Flight No.	Connect At	Meal
Columbus, Ga.	8 11a	11 26a	Ex Sa Su	3	824/823	ATL	S/
	8 11a	11 26a	Sa Only	3	824/805	ATL	S/
	2 57p	6 16p	Ex Sa	3	872/853	ATL	
Dothan, Ala.	8 11a	10 27a	Ex Su	4	824/513	ATL	S/
Eglin A.F.B./Fort Walton Beach, Fla.	8 11a	10 19a	Ex Su	3	824/511	ATL	S/
	2 57p	5 29p		4	872/519	ATL	
Golden Triangle Regional Airport, Miss.	2 57p	6 01p		4	872/819	ATL	
Greenville/Spartanburg, S.C.	10 12p	10 33p	Ex Sa	0	871		
Gulfport/Biloxi, Miss.	8 11a	11 02a	Ex Su	4	824/133	ATL	S/
	2 57p	6 38p		4	872/174	ATL	
Huntsville/Decatur, Ala.	8 11a	9 58a	Ex Su	3	824/163	ATL	S/
	2 57p	4 38p		3	872/169	ATL	
Meridian, Miss.	8 11a	11 09a	Ex Su	4	824/137	ATL	S/
Mobile, Ala./Pascagoula, Miss.	8 11a	10 27a	Ex Su	3	824/133	ATL	S/
	2 57p	6 03p		3	872/174	ATL	
Moultrie/Thomasville, Ga.	8 11a	12 22p	Ex Sa Su	4	824/823	ATL	S/
	8 11a	12 22p	Sa Only	4	824/805	ATL	S/
Nashville, Tenn.	2 57p	5 20p		4	872/169	ATL	
Panama City, Fla.	8 11a	10 52a	Ex Su	4	824/511	ATL	S/
	2 57p	4 58p		3	872/519	ATL	
Tupelo, Miss.	2 57p	6 42p		5	872/819	ATL	
Tuscaloosa, Ala.	8 11a	10 34a	Ex Su	3	824/137	ATL	S/
	2 57p	5 23p		3	872/819	ATL	
Valdosta, Ga.	8 11a	12 51p	Ex Sa Su	5	824/823	ATL	S/
	8 11a	12 51p	Sa Only	5	824/805	ATL	S/

From  
**Gulfport, Miss.**  
**Biloxi, Miss.**  
To

**864-2323**  
**864-2323**  
For Air Freight Call 864-3105

Anderson, S.C.	6 25a	12 43p	Ex Sa	4	140/825	ATL	S/
	5 00p	9 34p		3	142/871	ATL	S/
Athens, Ga.	6 25a	11 58a		3	140/825	ATL	S/
	5 00p	8 54p	Ex Sa	2	142/871	ATL	S/
	5 00p	8 54p	Sa Only	2	142/883	ATL	S/
Atlanta, Ga.	6 25a	9 25a		1	140/512	MOB	S/S
	6 25a	9 30a		2	140		S
	11 30a	1 58p		1	136		
	5 00p	7 29p		1	142		S
	7 45p	11 20p		3	520		
Baton Rouge, La.	3 10p	5 50p		1	517/350	MSY	
Birmingham, Ala.	6 25a	7 40a		1	140		S
Charleston, S.C.	6 25a	12 03p		4	140/849	ATL	S/
Chattanooga, Tenn.	6 53p	10 43p	Ex Sa	2	174/416	MEM	S/
Chicago, Ill. (Midway Airport)	9 40a	1 10p		2	508/210	MEM	/L
	6 53p	9 36p		1	174		S
Columbia, S.C.	6 25a	11 09a		3	140/849	ATL	S/
Columbus, Ga.	11 40a	1 55p		1	321		
Dothan, Ala.	7 45p	9 31p		2	520		
Eglin A.F.B./Fort Walton Beach, Fla.	5 00p	7 20p		1	142/227	MOB	
	7 45p	8 50p		1	520		
Florence/Sheffield/Tuscumbia, Ala.	6 53p	9 37p		1	174/846	MEM	S/
Greenville, Miss.	3 10p	7 13p		3	517/350	MSY	
Greenville/Spartanburg, S.C.	11 30a	4 40p		2	136/173	ATL	
	5 00p	9 10p	Ex Sa	2	142/177	ATL	S/
	5 00p	9 39p	Sa Only	3	142/883	ATL	S/
Greenwood, S.C.	6 25a	1 06p		5	140/825	ATL	S/
	5 00p	10 02p	Ex Sa	4	142/871	ATL	S/
Huntsville/Decatur, Ala.	6 53p	9 03p	Ex Sa	1	174/416	MEM	S/
Jackson, Tenn.	9 40a	12 55p		2	508/414	MEM	
	6 53p	9 25p	Ex Sa	1	174/358	MEM	S/
Knoxville, Tenn.	11 30a	4 53p		3	136/418	BNA	
	6 53p	11 53p	Ex Sa	3	174/358	MEM	S/

	Leave	Arrive	Freq.	Stops	Flight No.	Connect At	Meal
Memphis, Tenn.	6 25a	10 33a		2	140/131	MOB	S/S
	9 40a	11 38a		1	508		
	6 53p	7 48p		0	174		S
Miami, Fla.	11 40a	6 38p		5	321/225	CSG	
	5 00p	10 39p		3	142/227	MOB	
Mobile, Ala./Pascagoula, Miss.	6 25a	6 45a		0	140		S
	11 30a	11 50a		0	136		
	11 40a	12 00n		0	321		
	5 00p	5 20p		0	142		
	7 45p	8 05p		0	520		
Monroe, La.	3 10p	6 36p		2	517/350	MSY	
Nashville, Tenn.	9 40a	1 35p		3	508/414	MEM	
	11 30a	2 24p		2	136		
	6 53p	10 05p	Ex Sa	2	174/358	MEM	S/
New Orleans, La.	9 40a	10 05a		0	508		
	3 10p	3 35p		0	517		
	8 50p	9 15p		0	717		
New York, N.Y./Newark, N.J.	11 40a	4 40p		3	321		L
Orlando, Fla.	6 25a	10 34a		2	140/215	BHM	S/B
	5 00p	9 44p		2	142/227	MOB	
St. Louis, Mo.	6 25a	11 41a		3	140/131	MOB	S/S
	9 40a	12 50p		2	508		S
	6 53p	9 33p		1	174/350	MEM	S/
Tri Cities, Tenn., Va.	11 30a	5 32p		4	136/418	BNA	
	6 53p	12 30a	Ex Sa	4	174/358	MEM	S/
Tupelo, Miss.	9 40a	1 20p		2	508/834	MEM	
	6 53p	9 00p		1	174/828	MEM	S/
Washington, D.C. (Dulles Intl Airport)	11 40a	3 33p		2	321		L

From

**Hattiesburg, Miss.**

**582-1643**

To

Chicago, Ill. (Midway Airport)	8 25a	1 10p	Ex Su	4	830/210	JAN	S/L
Greenwood, Miss.	8 25a	11 02a	Ex Su	3	830		S
	3 45p	6 22p	Ex Sa	3	836		
Jackson/Vicksburg, Miss.	8 25a	10 17a	Ex Su	2	830		S
	3 45p	5 37p	Ex Sa	2	836		
Laurel, Miss.	8 25a	8 42a	Ex Su	0	830		S
	3 45p	4 02p	Ex Sa	0	836		
Memphis, Tenn.	8 25a	11 28a	Ex Su	3	830/210	JAN	S/
	8 25a	12 14p	Ex Su	5	830		S
	3 45p	7 39p	Ex Sa	5	836		
Natchez, Miss.	8 25a	9 34a	Ex Su	1	830		S
	3 45p	4 54p	Ex Sa	1	836		
New Orleans, La.	1 36p	2 16p	Ex Su	0	833		
	9 40p	10 20p	Ex Sa	0	837		
Orlando, Fla.	3 45p	9 44p	Ex Sa	5	836/227	JAN	
University/Oxford, Miss.	8 25a	11 41a	Ex Su	4	830		S
	3 45p	7 01p	Ex Sa	4	836		

From

**Huntsville, Ala.**  
**Decatur, Ala.**

**539-7701**  
**353-2690**

For Huntsville Air Freight Call 772-3070  
For Decatur Air Freight Call 355-7870

To

Albany, Ga.	7 15a	10 55a		1	240/513	ATL	S/
	2 40p	7 11p	Ex Sa	1	242/861	ATL	
	5 50p	10 01p		1	244/857	ATL	
Anderson, S.C.	5 50p	9 34p	Ex Sa	2	244/871	ATL	
Athens, Ga.	5 50p	8 54p	Ex Sa	1	244/871	ATL	
	5 50p	8 54p	Sa Only	1	244/883	ATL	
Atlanta, Ga.	7 15a	8 55a		0	240		S
	10 20a	12 00n		0	164		
	2 40p	4 20p		0	242		
	5 50p	7 30p		0	244		
	9 18p	11 25p	Ex Sa	1	416		
Baton Rouge, La.	7 40a	11 06a	Ex Su	3	241/331	MEM	S/
	10 13a	12 55p	Ex Su	2	413/340	MSY	



From	Leave	Arrive	Freq.	Stops	Flight No.	Connect At	Meal
<b>Huntsville, Ala. (Cont.)</b>							
Charleston, S.C.	7 15a	12 03p		2	240/849	ATL	S/
Chattanooga, Tenn.	9 18p	10 43p	Ex Sa	0	416		
Chicago, Ill. (Midway Airport)	7 40a 3 47p	10 11a 6 00p	Ex Su	1 1	241/334 520/220	MEM MEM	S/B /S
Columbia, S.C.	7 15a	11 09a		1	240/849	ATL	S/
Columbus, Ga.	7 15a 7 15a 2 40p	11 26a 11 26a 6 16p	Ex Sa Su Sa Su Only Ex Sa	1 1 1	240/823 240/805 242/853	ATL ATL ATL	S/ S/ S/
Dothan, Ala.	7 15a 10 20a 5 50p	10 27a 1 24p 8 59p		2 1 1	240/513 164/517 244/523	ATL ATL ATL	S/
Eglin A.F.B./Fort Walton Beach, Fla.	7 15a 10 20a 2 40p 5 50p	10 19a 1 59p 5 29p 9 15p		1 2 2 2	240/511 164/517 242/519 244/521	ATL ATL ATL ATL	S/
Florence/Sheffield/Tuscumbia, Ala.	1 28p 8 52p	1 48p 9 12p		0 0	245 249		
Greenville, Miss.	7 40a	9 45a	Ex Su	1	241/331	MEM	S/
Greenville/Spartanburg, S.C.	5 50p 5 50p	9 10p 9 39p	Ex Sa Sa Only	2 1	244/177 244/883	ATL ATL	
Greenwood, Miss.	7 40a 3 47p	10 39a 6 44p	Ex Su Ex Sa	2 2	241/833 520/837	MEM MEM	S/
Greenwood, S.C.	5 50p	10 02p	Ex Sa	3	244/871	ATL	
Gulfport/Biloxi, Miss.	7 40a 3 47p	11 25a 7 35p	Ex Su	2 2	241/321 520	MEM	S/
Jackson/Vicksburg, Miss.	7 40a 3 47p	11 19a 5 53p	Ex Su	3 1	241/833 520/227	MEM MEM	S/
Jackson, Tenn.	7 40a	10 12a	Ex Sa Su	1	241/842	MEM	S/
Jacksonville, Fla.	7 15a	1 47p	Ex Sa Su	4	240/823	ATL	S/
Laurel, Miss.	7 40a 3 47p	12 59p 9 04p	Ex Su Ex Sa	5 5	241/833 520/837	MEM MEM	S/
Memphis, Tenn.	7 40a 3 47p 7 50p	8 18a 4 25p 8 52p	Ex Su	0 0 0	241 520 869		S
Meridian, Miss.	7 15a 5 50p	11 09a 9 15p	Ex Sa	2 3	240/137 244/145	ATL ATL	S/
Miami, Fla.	7 40a 3 47p	1 00p 10 39p	Ex Su	2 5	241/219 520/227	MEM MEM	S/B
Mobile, Ala./Pascagoula, Miss.	7 15a 10 13a 2 40p 5 50p	10 27a 11 05a 6 03p 8 28p	Ex Su	1 0 1 1	240/133 413 242/174 244/521	ATL ATL ATL ATL	S/
Monroe, La.	7 40a	10 18a	Ex Su	2	241/331	MEM	S/
Moultrie/Thomasville, Ga.	7 15a 7 15a 5 50p	12 22p 12 22p 9 03p	Ex Sa Su Sa Su Only	2 2 1	240/823 240/805 244/829	ATL ATL ATL	S/ S/
Nashville, Tenn.	4 54p	5 20p		0	169		
Natchez, Miss.	7 40a 3 47p	12 07p 8 12p	Ex Su Ex Sa	4 4	241/833 520/837	MEM MEM	S/
New Orleans, La.	7 40a 10 13a 3 47p	10 08a 11 45a 6 13p	Ex Su Ex Su	1 1 1	241/321 413 520	MEM	S/
Panama City, Fla.	7 15a 2 40p 5 50p	10 52a 4 58p 9 33p		2 1 2	240/511 242/519 244/523	ATL ATL ATL	S/
St. Louis, Mo.	7 40a 3 47p	9 43a 5 48p	Ex Su	1 1	241/234 520/415	MEM MEM	S/S
University/Oxford, Miss.	7 40a 3 47p	10 00a 6 05p	Ex Su Ex Sa	1 1	241/833 520/837	MEM MEM	S/
Valdosta, Ga.	7 15a 7 15a 5 50p	12 51p 12 51p 9 32p	Ex Sa Su Sa Su Only	3 3 2	240/823 240/805 244/829	ATL ATL ATL	S/ S/

From	Leave	Arrive	Freq.	Stops	Flight No.	Connect At	Meal
<b>Jackson, Miss. Vicksburg, Miss.</b>							
<b>948-7567</b>							
<b>800-241-2521</b>							
<b>For Air Freight Call 939-5323</b>							
Albany, Ga.	3 50p	10 01p		3	244/857	ATL	
Anderson, S.C.	3 50p	9 34p	Ex Sa	4	244/871	ATL	
Athens, Ga.	3 50p 3 50p	8 54p 8 54p	Ex Sa Sa Only	3 3	244/871 244/883	ATL ATL	
Atlanta, Ga.	3 50p 6 05p	7 30p 11 20p		2 3	244 227/520		MOB
Baton Rouge, La.	4 15p	5 50p		1	345/350	MSY	
Chattanooga, Tenn.	5 52p	10 43p	Ex Sa	4	836/416	MEM	
Chicago, Ill. (Midway Airport)	10 50a 3 50p 5 52p	1 10p 6 00p 9 36p		1 1 3	210 244/220 836/174	MEM MEM	L /S
Dothan, Ala.	6 05p	9 31p		2	227/520	VPS	
Eglin A.F.B./Fort Walton Beach, Fla.	6 05p	7 20p		1	227		
Florence/Sheffield/Tuscumbia, Ala.	5 52p	9 37p	Ex Sa	3	836/846	MEM	
Greenville/Spartanburg, S.C.	3 50p 3 50p	9 10p 9 39p	Ex Sa Sa Only	3 4	244/177 244/883	ATL ATL	
Greenwood, Miss.	10 32a 5 52p	11 02a 6 22p	Ex Su Ex Sa	0 0	830 836		
Greenwood, S.C.	3 50p	10 02p	Ex Sa	5	244/871	ATL	
Gulfport/Biloxi, Miss.	6 05p	8 37p		1	227/717	MOB	
Hattiesburg, Miss.	11 34a 7 39p	1 26p 9 30p	Ex Su Ex Sa	2 2	833 837		
Huntsville/Decatur, Ala.	3 50p 5 52p	5 33p 9 03p	Ex Sa	1 3	244 836/416		MEM
Jackson, Tenn.	10 50a 5 52p	12 55p 9 25p	Ex Sa	1 3	210/414 836/358	MEM MEM	
Jacksonville, Fla.	10 50a	4 25p		2	210/235	MEM	
Knoxville, Tenn.	5 52p	11 53p	Ex Sa	5	836/358	MEM	
Laurel, Miss.	11 34a 7 39p	12 59p 9 04p	Ex Su Ex Sa	1 1	833 837		
Memphis, Tenn.	10 32a 10 50a 3 50p 5 52p	12 14p 11 28a 4 28p 7 39p	Ex Su	2 0 0 2	830 210 244 836		
Miami, Fla.	6 05p	10 39p		3	227		
Mobile, Ala./Pascagoula, Miss.	6 05p	6 36p		0	227		
Moultrie/Thomasville, Ga.	3 50p	9 03p		3	244/829	ATL	
Nashville, Tenn.	10 50a 5 52p	1 35p 10 05p	Ex Sa	2 4	210/414 836/358	MEM MEM	
Natchez, Miss.	11 34a 7 39p	12 07p 8 12p	Ex Su Ex Sa	0 0	833 837		
New Orleans, La.	11 34a 4 15p 6 05p 7 39p	2 16p 4 50p 9 15p 10 20p	Ex Su	3 0 2 3	833 345 227/717 837		MOB
Orlando, Fla.	6 05p	9 44p		2	227		
Panama City, Fla.	3 50p	9 33p		4	244/523	ATL	
St. Louis, Mo.	10 50a 3 50p 5 52p	12 50p 5 48p 9 33p	Ex Sa	1 1 3	210/508 244/415 836/350	MEM MEM MEM	/S
Tupelo, Miss.	10 50a 5 52p	1 20p 9 00p	Ex Sa	1 3	210/834 836/828	MEM MEM	
University/Oxford, Miss.	10 32a 5 52p	4 11a 7 01p	Ex Su Ex Sa	1 1	830 836		
Valdosta, Ga.	3 50p	9 32p		4	244/829	ATL	



	Leave	Arrive	Freq.	Stops	Flight No.	Connect At	Meal
From <b>Jackson, Tenn.</b> To	<b>422-5416</b>						
Anniston, Ala.	8 30a	12 06p		3	411/812	MEM	S/
Atlanta, Ga.	8 30a 1 05p 7 15p	2 00p 3 34p 11 25p	Ex Sa	4 1 3	411/812 414 417/416	MEM	S/
Baton Rouge, La.	8 30a 7 15p	11 06a 10 14p	Ex Sa	3 3	411/331 417/353	MEM	S/
Birmingham, Ala.	8 30a	9 56a		1	411/211	MEM	S/
Chicago, Ill. (Midway Airport)	7 15p	9 36p	Ex Sa	1	417/174	MEM	
Columbus, Ga.	1 05p	6 16p	Ex Sa	2	414/853	ATL	
Crossville, Tenn.	10 25a	12 29p	Ex Sa	2	842		
Dothan, Ala.	1 05p	4 22p		2	414/855	ATL	
Eglin A.F.B./Fort Walton Beach, Fla.	1 05p	5 29p		3	414/519	ATL	
Florence/Sheffield/ Tuscumbia, Ala.	7 15p	9 37p	Ex Sa	1	417/846	MEM	
Golden Triangle Regional Airport, Miss.	8 30a 7 15p	10 55a 9 17p	Ex Sa	2 1	411/812 417/355	MEM	S/
Greenville, Miss.	8 30a 7 15p	9 45a 8 55p	Ex Sa	1 1	411/331 417/353	MEM	S/
Greenville/Spartanburg, S.C.	1 05p	4 40p		2	414/173	ATL	
Greenwood, Miss.	8 30a 4 28p	10 39a 6 44p	Ex Su Ex Sa	2 2	411/833 847/837	MEM	S/
Gulfport/Biloxi, Miss.	8 30a 4 28p	11 25a 7 35p	Ex Sa	2 2	411/321 847/520	MEM	S/
Huntsville/Decatur, Ala.	8 30a 7 15p	10 03a 9 03p	Ex Su Ex Sa	1 1	411/413 417/416	MEM	S/
Jackson/Vicksburg, Miss.	8 30a 4 28p	11 19a 5 53p	Ex Su Ex Sa	3 1	411/833 847/227	MEM	S/
Knoxville, Tenn.	1 05p 9 35p	4 53p 11 53p	Ex Sa	1 1	414/418 358	BNA	
Laurel, Miss.	8 30a 4 28p	12 59p 9 04p	Ex Su Ex Sa	5 5	411/833 847/837	MEM	S/
Memphis, Tenn.	8 30a 4 28p 7 15p	8 55a 5 00p 7 40p	Ex Sa Ex Sa Ex Sa	0 0 0	411 847 417		S
Meridian, Miss.	7 15p	9 55p	Ex Sa	2	417/355	MEM	
Miami, Fla.	8 30a	1 00p		2	411/219	MEM	S/B
Mobile, Ala./Pascagoula, Miss.	8 30a	11 05a	Ex Su	2	411/413	MEM	S/
Monroe, La.	8 30a 7 15p	10 18a 9 28p	Ex Sa	2 2	411/331 417/353	MEM	S/
Montgomery, Ala.	8 30a	10 35a		2	411/211	MEM	S/
Nashville, Tenn.	10 25a 1 05p 9 35p	11 10a 1 35p 10 05p	Ex Sa Ex Sa Ex Sa	0 0 0	842 414 358		
Natchez, Miss.	8 30a 4 28p	12 07p 8 12p	Ex Su Ex Sa	4 4	411/833 847/837	MEM	S/
New Orleans, La.	8 30a 4 28p 7 15p	10 08a 6 13p 10 47p	Ex Sa Ex Sa Ex Sa	1 1 4	411/321 847/520 417/353	MEM	S/
Orlando, Fla.	8 30a	12 05p		1	411/219	MEM	S/B
Panama City, Fla.	1 05p	4 58p		2	414/519	ATL	
Shelbyville/Tullahoma, Tenn.	10 25a 1 05p	11 54a 2 34p	Ex Sa Ex Sa	1 1	842 414/843	BNA	
St. Louis, Mo.	8 30a 4 28p 7 15p	11 41a 7 03p 9 33p	Ex Sa Ex Sa Ex Sa	1 1 1	411/131 847/238 417/350	MEM	S/
Tallahassee, Fla.	8 30a	12 27p		3	411/211	MEM	S/
Tri Cities, Tenn., Va.	1 05p 9 35p	5 32p 12 30a	Ex Sa	2 2	414/418 358	BNA	

	Leave	Arrive	Freq.	Stops	Flight No.	Connect At	Meal
Tupelo, Miss.	8 30a 7 15p	10 20a 9 00p	Ex Sa	1 1	411/812 417/828	MEM	S/
Tuscaloosa, Ala.	7 15p	9 51p	Ex Sa	2	417/828	MEM	
University/Oxford, Miss.	8 30a 4 28p	10 00a 6 05p	Ex Su Ex Sa	1 1	411/833 847/837	MEM	S/
Valdosta, Ga.	1 05p	5 22p	Ex Sa	2	414/827	ATL	
From <b>Jacksonville, Fla.</b> To	<b>757-2381</b> Surrounding Areas Dial 800-241-2521 For Air Freight Call 757-2386						
Atlanta, Ga.	2 10p	4 37p	Ex Sa Su	2	870		
Birmingham, Ala.	7 45a 5 00p	7 45a 5 00p		0 0	234 238		B S
Chicago, Ill. (Midway Airport)	7 45a	10 11a		2	234/334	MEM	BS/B
Golden Triangle Regional Airport, Miss.	7 45a 2 10p	10 55a 6 01p	Ex Sa Su	3 4	234/812 870/819	MEM	BS/
Greenville, Miss.	7 45a	9 45a		2	234/331	MEM	BS/
Huntsville/Decatur, Ala.	2 10p	4 38p	Ex Sa Su	3	870/169	ATL	
Jackson/Vicksburg, Miss.	7 45a	11 19a	Ex Su	4	234/833	MEM	BS/
Jackson, Tenn.	7 45a	10 12a	Ex Sa	2	234/842	MEM	BS/
Memphis, Tenn.	7 45a 5 00p	8 38a 5 55p		1 1	234 238		BS S
Moultrie/Thomasville, Ga.	2 10p	3 19p	Ex Sa Su	1	870		
Nashville, Tenn.	2 10p 5 00p	5 20p 6 35p	Ex Sa Su	4 1	870/169 238/616	ATL	BHM S/
St. Louis, Mo.	7 45a 5 00p	9 43a 7 03p		2 2	234 238		BS S
Tupelo, Miss.	2 10p	6 42p	Ex Sa Su	5	870/819	ATL	
Tuscaloosa, Ala.	2 10p	5 23p	Ex Sa Su	3	870/819	ATL	
Valdosta, Ga.	2 10p	2 48p	Ex Sa Su	0	870		
From <b>Johnson City, Tenn.</b> (See Tri-cities)	<b>928-9226</b>						
From <b>Kingsport, Tenn.</b> (See Tri-cities)	<b>323-4144</b>						
From <b>Knoxville, Tenn.</b> To	<b>577-7561</b> For Air Freight Call 577-6555						
Atlanta, Ga.	6 47p	8 39p	Ex Sa	1	417/616	BNA	
Baton Rouge, La.	8 02a 6 47p	11 06a 10 14p	Ex Sa	5	411/331 417/353	MEM	S/
Chattanooga, Tenn.	3 53p	4 18p		0	415		
Chicago, Ill. (Midway Airport)	3 53p 6 47p	6 00p 9 36p	Ex Sa	2 3	415/220 417/174	MEM	/S
Florence/Sheffield/ Tuscumbia, Ala.	6 47p	9 37p	Ex Sa	3	417/846	MEM	
Golden Triangle Regional Airport, Miss.	8 02a 6 47p	10 55a 9 17p	Ex Sa	4 3	411/812 417/355	MEM	S/
Greenville, Miss.	8 02a 6 47p	9 45a 8 55p	Ex Sa	3 3	411/331 417/353	MEM	S/
Greenwood, Miss.	8 02a 3 53p	10 39a 6 44p	Ex Su Ex Sa	4 3	411/833 415/837	MEM	S/
Gulfport/Biloxi, Miss.	8 02a 3 53p	11 25a 7 35p		4 3	411/321 415/520	MEM	S/
Jackson/Vicksburg, Miss.	8 02a 3 53p	11 19a 5 53p	Ex Su	5	411/833 415/227	MEM	S/
Jackson, Tenn.	8 02a 6 47p	8 20a 7 05p	Ex Sa	1	411 417		S



	Leave	Arrive	Freq.	Stops	Flight No.	Connect At	Meal
<b>From Knoxville, Tenn. (Cont.)</b>							
<b>To</b>							
Memphis, Tenn.	8 02a 3 53p 6 47p	8 55a 4 20p 7 40p	Ex Sa	2 1 2	411 415 417		S
Meridian, Miss.	6 47p	9 55p	Ex Sa	4	417/355	MEM	
Mobile, Ala./Pascagoula, Miss.	8 02a 8 02a 3 53p	11 05a 12 00n 6 36p	Ex Su	4 5 3	411/413 411/321 415/227	MEM MEM MEM	S/ S/
Monroe, La.	8 02a 6 47p	10 18a 9 28p	Ex Sa	4	411/331 417/353	MEM MEM	S/
Nashville, Tenn.	8 02a 6 47p	7 35a 6 20p	Ex Sa	0 0	411 417		S
Natchez, Miss.	3 53p	8 12p	Ex Sa	5	415/837	MEM	
New Orleans, La.	8 02a 3 53p	10 08a 6 13p		3 2	411/321 415/520	MEM MEM	S/
St. Louis, Mo.	8 02a 3 53p 6 47p	11 41a 5 48p 9 33p	Ex Sa	3 2 3	411/131 415 417/350	MEM MEM	S/
Tri Cities, Tenn., Va.	12 03a 2 12p 5 05p	12 30a 2 39p 5 32p	Ex Su	0 0 0	358 412 418		
Tupelo, Miss.	8 02a 6 47p	10 20a 9 00p	Ex Sa	3 3	411/812 417/828	MEM MEM	S/
University/Oxford, Miss.	8 02a 3 53p	10 00a 6 05p	Ex Su Ex Sa	3 2	411/833 415/837	MEM MEM	S/

**From Laurel, Miss. 426-3440**

Chicago, Ill. (Midway Airport)	8 52a 4 12p	1 10p 9 36p	Ex Su Ex Sa	3 5	830/210 836/174	JAN MEM	S/L
Eglin A.F.B./Fort Walton Beach, Fla.	4 12p	7 20p	Ex Sa	3	836/227	JAN	
Florence/Sheffield/Tuscumbia, Ala.	4 12p	9 37p	Ex Sa	5	836/846	MEM	
Greenwood, Miss.	8 52a 4 12p	11 02a 6 22p	Ex Su Ex Sa	2 2	830 836		S
Hattiesburg, Miss.	1 09p 9 13p	1 26p 9 30p	Ex Su Ex Sa	0 0	833 837		
Huntsville/Decatur, Ala.	4 12p	9 03p	Ex Sa	5	836/416	MEM	
Jackson/Vicksburg, Miss.	8 52a 4 12p	10 17a 5 37p	Ex Su Ex Sa	1 1	830 836		S
Jackson, Tenn.	8 52a 4 12p	12 55p 9 25p	Ex Su Ex Sa	5 5	830/414 836/358	MEM MEM	S/
Memphis, Tenn.	8 52a 8 52a 4 12p	11 28a 12 14p 7 39p	Ex Su Ex Su Ex Sa	2 4 4	830/210 830 836	JAN	S/ S
Miami, Fla.	4 12p	10 39p	Ex Sa	5	836/227	JAN	
Natchez, Miss.	8 52a 4 12p	9 34a 4 54p	Ex Su Ex Sa	0 0	830 836		S
New Orleans, La.	1 09p 9 13p	2 16p 10 20p	Ex Su Ex Sa	1 1	833 837		
Orlando, Fla.	4 12p	9 44p	Ex Sa	4	836/227	JAN	
St. Louis, Mo.	4 12p	9 33p	Ex Sa	5	836/350	MEM	
Tupelo, Miss.	8 52a 4 12p	1 20p 9 00p	Ex Su Ex Sa	5 5	830/834 836/828	MEM MEM	S/
University/Oxford, Miss.	8 52a 4 12p	11 41a 7 01p	Ex Su Ex Sa	3 3	830 836		S

**From Memphis, Tenn. 525-7681**  
To For Air Freight Call 397-1416

Albany, Ga.	9 45a 4 55p	3 50p 10 01p		4 2	812/525 244/857	ATL ATL	
Anderson, S.C.	4 55p	9 34p	Ex Sa	3	244/871	ATL	

	Leave	Arrive	Freq.	Stops	Flight No.	Connect At	Meal
Anniston, Ala.	9 45a	12 06p		2	812		
Athens, Ga.	4 55p 4 55p	8 54p 8 54p	Ex Sa Sa Only	2 2	244/871 244/883	ATL ATL	
Atlanta, Ga.	9 45a 12 30p 2 50p 4 55p 8 25p	2 00p 3 34p 6 43p 7 30p 11 25p		3 2 2 1 2	812 414 816 244 416		
Baton Rouge, La.	9 15a 9 25a 12 00n 3 25p 8 25p	11 06a 12 55p 1 51p 5 50p 10 14p	Ex Su	2 3 2 2 2	331 413/340 339 345/350 353		MSY MSY
Birmingham, Ala.	9 15a 1 30p 3 45p 7 38p	9 56a 2 11p 4 26p 8 18p		0 0 0 0	211 235 229 237		
Chattanooga, Tenn.	11 30a 8 25p	1 17p 10 43p	Ex Sa	0 1	412 416		
Chicago, Ill. (Midway Airport)	8 55a 11 54a 4 44p 8 20p	10 11a 1 10p 6 00p 9 36p		0 0 0 4	334 210 220 174		B L S
Columbus, Ga.	9 45a 12 30p	3 13p 6 16p	Ex Sa	4 3	812/225 414/853	ATL ATL	
Crossville, Tenn.	9 40a	12 29p	Ex Sa	3	842		
Dothan, Ala.	12 30p 4 55p 5 15p	4 22p 8 59p 9 31p		3 2 4	414/855 244/523 520	ATL ATL	
Eglin A.F.B./Fort Walton Beach, Fla.	9 15a 9 25a 12 30p 5 15p 5 15p	12 52p 12 52p 5 29p 7 20p 8 50p	Ex Su	4 3 4 2 3	331/516 413/516 414/519 227 520	MSY MSY ATL	/S /S
Florence/Sheffield/Tuscumbia, Ala.	8 50p	9 37p		0	846		
Golden Triangle Regional Airport, Miss.	9 45a 2 50p 8 45p	10 55a 3 40p 9 17p		1 0 0	812 816 355		
Greenville, Miss.	9 15a 12 00n 8 25p	9 45a 12 30p 8 55p		0 0 0	331 339 353		
Greenville/Spartanburg, S.C.	12 30p 4 55p 4 55p	4 40p 9 10p 9 39p	Ex Sa Sa Only	3 2 3	414/173 244/177 244/883	ATL ATL ATL	
Greenwood, Miss.	9 35a 5 40p	10 39a 6 44p	Ex Su Ex Sa	1 1	833 837		
Greenwood, S.C.	4 55p	10 02p	Ex Sa	4	244/871	ATL	
Gulfport/Biloxi, Miss.	9 10a 2 50p 5 15p	11 25a 4 45p 7 35p		1 1 1	321 142 520		
Hattiesburg, Miss.	9 35a 5 40p	1 26p 9 30p	Ex Su Ex Sa	5 5	833 837		
Huntsville/Decatur, Ala.	9 25a 2 45p 4 55p 8 25p	10 03a 3 23p 5 33p 9 03p	Ex Su Ex Sa	0 0 0 0	413 246 244 416		
Jackson/Vicksburg, Miss.	9 35a 3 25p 5 15p 5 40p	11 19a 4 03p 5 53p 7 24p	Ex Su Ex Sa	2 0 0 2	833 345 227 837		
Jackson, Tenn.	9 40a 12 30p 9 00p	10 12a 12 55p 9 25p	Ex Sa Ex Sa	0 0 0	842 414 358		
Jacksonville, Fla.	1 30p 7 38p	4 25p 10 30p		1 1	235 237		
Knoxville, Tenn.	11 30a 12 30p 9 00p	1 57p 4 53p 11 53p	Ex Sa	1 2 2	412 414/418 358	BNA	
Laurel, Miss.	9 35a 5 40p	12 59p 9 04p	Ex Su Ex Sa	4 4	833 837		
Meridian, Miss.	8 45p	9 55p		1	355		



	Leave	Arrive	Freq.	Stops	Flight No.	Connect At	Meal
<b>Miami, Fla.</b>	9 15a 9 30a 3 45p 5 15p	2 20p 1 00p 8 17p 10 39p		4 1 3 4	211 219 229 227	S B D	
<b>Mobile, Ala./Pascagoula, Miss.</b>	9 10a 9 25a 2 50p 2 50p 3 45p 5 15p 5 15p	12 00n 11 05a 4 45p 5 20p 5 42p 6 36p 8 05p	Ex Su	2 1 1 2 1 1 2	321 413 142/616 142 229/617 227 520	MSY BHM	
<b>Monroe, La.</b>	9 15a 12 00n 8 25p	10 18a 1 03p 9 28p		1 1 1	331 339 353		
<b>Montgomery, Ala.</b>	9 15a 3 45p	10 35a 5 06p		1 1	211 229		
<b>Moultrie/Thomasville, Ga.</b>	4 55p	9 03p		2	244/829	ATL	
<b>Nashville, Tenn.</b>	9 40a 12 30p 9 00p	11 10a 1 35p 10 05p	Ex Sa Ex Sa	1 1 1	842 414 358		
<b>Natchez, Miss.</b>	9 35a 5 40p	12 07p 8 12p	Ex Su Ex Sa	3 3	833 837		
<b>New Orleans, La.</b>	9 10a 9 15a 9 25a 12 00n 2 50p 3 25p 5 15p 8 25p	10 08a 11 39a 11 45a 2 24p 3 48p 4 50p 6 13p 10 47p	Ex Su	0 3 2 3 0 1 0 3	321 331 413 339 142 345 520 353		
<b>Orlando, Fla.</b>	9 15a 9 30a 3 45p 5 15p	1 25p 12 05p 7 22p 9 44p		3 0 2 3	211 219 229 227	S B D	
<b>Panama City, Fla.</b>	9 45a 12 30p 4 55p	3 04p 4 58p 9 33p		5 3 3	812/225 414/519 244/523	ATL ATL ATL	
<b>Shelbyville/Tullahoma, Tenn.</b>	9 40a 12 30p	11 54a 2 34p	Ex Sa Ex Sa	2 2	842 414/843	BNA	
<b>St. Louis, Mo.</b>	8 55a 10 53a 12 02p 5 00p 6 15p 8 45p	9 43a 11 41a 12 50p 5 48p 7 03p 9 33p		0 0 0 0 0 0	234 131 508 415 238 350	S S	
<b>Tallahassee, Fla.</b>	9 15a	12 27p		2	211		
<b>Tri Cities, Tenn., Va.</b>	11 30a 12 30p 9 00p	2 39p 5 32p 12 30a	Ex Sa	2 3 3	412 414/418 358	BNA	
<b>Tupelo, Miss.</b>	9 45a 12 45p 8 25p	10 20a 1 20p 9 00p		0 0 0	812 834 828		
<b>Tuscaloosa, Ala.</b>	2 50p 8 25p	4 21p 9 51p		1 1	816 828		
<b>University/Oxford, Miss.</b>	9 35a 5 40p	10 00a 6 05p	Ex Su Ex Sa	0 0	833 837		
<b>Valdosta, Ga.</b>	12 30p 4 55p	5 22p 9 32p	Ex Sa	3 3	414/827 244/829	ATL ATL	

From  
**Meridian, Miss.**  
To  
**485-5165**  
For Air Freight Call 483-9288

<b>Albany, Ga.</b>	6 30a 11 25a	10 55a 3 50p	Ex Su	3 2	130/513 134/525	ATL ATL	S/ S/
<b>Anderson, S.C.</b>	6 30a	12 43p	Ex Su	4	130/825	ATL	S/
<b>Athens, Ga.</b>	6 30a	11 58a	Ex Su	3	130/825	ATL	S/
<b>Atlanta, Ga.</b>	6 30a 11 25a	9 27a 1 42p	Ex Su	2 1	130 134		S
<b>Charleston, S.C.</b>	6 30a	12 03p	Ex Su	4	130/849	ATL	S/
<b>Chicago, Ill. (Midway Airport)</b>	7 05a	10 11a		2	332/334	MEM	S/B
<b>Columbia, S.C.</b>	6 30a	11 09a	Ex Su	3	130/849	ATL	S/
<b>Columbus, Ga.</b>	6 30a 6 30a 11 25a	11 26a 11 26a 3 13p	Ex Sa Su Sa Only	3 3 2	130/823 130/805 134/225	ATL ATL ATL	S/ S/ S/

	Leave	Arrive	Freq.	Stops	Flight No.	Connect At	Meal
<b>Crossville, Tenn.</b>	7 05a	12 29p	Ex Sa	5	332/842	MEM	S/
<b>Dothan, Ala.</b>	6 30a	10 27a	Ex Su	4	130/513	ATL	S/
<b>Golden Triangle Regional Airport, Miss.</b>	6 30a 7 05a	6 55a 7 30a	Ex Su	0 0	130 332		S S
<b>Greenwood, S.C.</b>	6 30a	1 06p	Ex Su	5	130/825	ATL	S/
<b>Huntsville/Decatur, Ala.</b>	6 30a	9 58a	Ex Su	3	130/163	ATL	S/
<b>Jackson, Tenn.</b>	7 05a	10 12a	Ex Sa	2	332/842	MEM	S/
<b>Memphis, Tenn.</b>	7 05a	8 15a		1	332		S
<b>Moultrie/Thomasville, Ga.</b>	6 30a 6 30a	12 22p 12 22p	Ex Sa Su Sa Only	4 4	130/823 130/805	ATL ATL	S/ S/
<b>Nashville, Tenn.</b>	7 05a 11 25a	11 10a 2 24p	Ex Sa	3 2	332/842 134/136	MEM ATL	S/ S/
<b>Orlando, Fla.</b>	11 25a	5 43p		5	134/225	ATL	
<b>Panama City, Fla.</b>	6 30a 11 25a	10 52a 3 04p	Ex Su	4 3	130/511 134/225	ATL ATL	S/ S/
<b>Shelbyville/Tullahoma, Tenn.</b>	7 05a	11 54a	Ex Sa	4	332/842	MEM	S/
<b>St. Louis, Mo.</b>	7 05a	9 43a		2	332/234	MEM	S/S
<b>Tallahassee, Fla.</b>	11 25a	4 45p		4	134/225	ATL	
<b>Tuscaloosa, Ala.</b>	6 30a 11 25a	7 30a 11 50a	Ex Su	1 0	130 134		S
<b>University/Oxford, Miss.</b>	7 05a	10 00a	Ex Su	2	332/833	MEM	S/
<b>Valdosta, Ga.</b>	6 30a 6 30a	12 51p 12 51p	Ex Sa Su Sa Only	5 5	130/823 130/805	ATL ATL	S/ S/

From  
**Miami, Fla.**  
To  
**379-7501**  
Surrounding Areas Dial  
800-241-2521  
For Air Freight Call: 526-6562

<b>Anniston, Ala.</b>	10 40a	3 07p		5	216/818	ATL	
<b>Atlanta, Ga.</b>	8 00a 10 40a	12 57p 2 35p		3 4	210/511 216	VPS	S/ S/
<b>Birmingham, Ala.</b>	7 30a 1 40p 6 30p	9 50a 3 27p 7 47p		3 2 1	212 220 228		S D
<b>Chicago, Ill. (Midway Airport)</b>	8 00a 1 40p	1 10p 6 00p		5 4	210 220		SL S
<b>Columbus, Ga.</b>	10 40a 12 20p	1 54p 4 40p		3 4	216 716		
<b>Dothan, Ala.</b>	12 20p	3 01p		3	716		
<b>Eglin A.F.B./Fort Walton Beach, Fla.</b>	8 00a 12 20p 7 25p	9 02a 1 57p 9 27p		1 2 3	210 716 230		S
<b>Greenville, Miss.</b>	8 00a	12 30p		5	210/339	MEM	S/
<b>Greenville/Spartanburg, S.C.</b>	10 40a	4 40p		5	216/173	ATL	
<b>Greenwood, Miss.</b>	3 00p	6 44p	Ex Sa	3	222/837	MEM	S/
<b>Gulfport/Biloxi, Miss.</b>	8 00a 12 20p	11 02a 2 58p		3 3	210/133 716/517	MOB VPS	S/ S/
<b>Huntsville/Decatur, Ala.</b>	1 40p	5 33p		4	220/244	MEM	
<b>Jackson/Vicksburg, Miss.</b>	8 00a 3 00p	10 36a 5 53p		3 2	210 222/227	MEM	S/ S/
<b>Jackson, Tenn.</b>	8 00a	12 55p		5	210/414	MEM	S/
<b>Knoxville, Tenn.</b>	6 30p	11 53p	Ex Sa	3	228/358	BNA	D/
<b>Laurel, Miss.</b>	8 00a	12 59p	Ex Su	5	210/833	JAN	S/
<b>Memphis, Tenn.</b>	7 30a 8 00a 1 40p 3 00p	10 48a 11 28a 4 20p 4 45p		4 4 3 1	212 210 220 222		S S S S
<b>Mobile, Ala./Pascagoula, Miss.</b>	8 00a 1 40p	9 52a 5 42p		2 3	210 220/617	BHM	S
<b>Montgomery, Ala.</b>	7 30a 1 40p	9 10a 2 46p		2 1	212 220		S



	Leave	Arrive	Freq.	Stops	Flight No.	Connect At	Meal
<b>From Miami, Fla. (Cont.)</b>							
<b>To</b>							
Nashville, Tenn.	10 40a 6 30p	3 49p 8 37p		5 2	216/617 228	ATL	D
Natchez, Miss.	8 00a	12 07p	Ex Su	4	210/833	JAN	S/
New Orleans, La.	8 00a 12 20p 1 40p	11 45a 3 35p 6 25p	Ex Su	3 4 4	210/413 716/517 220/617	MOB VPS BHM	S/
New York, N.Y./Newark, N.J.	12 20p	7 30pⓄ		6	716		D
Orlando, Fla.	7 30a 8 00a 10 40a 12 20p 1 40p 3 00p 6 30p 7 25p	8 17a 8 47a 11 27a 1 07p 2 27p 3 47p 7 17p 8 12p		0 0 0 0 0 0 0 0	212 210 216 716 220 222 228 230		S S
Panama City, Fla.	10 40a 7 25p	12 06p 8 51p		2 2	216 230		
St. Louis, Mo.	8 00a 1 40p 3 00p	12 50p 5 48p 7 03p		5 4 2	210/508 220/415 222/238	MEM MEM MEM	S/S S/
Tallahassee, Fla.	7 30a 10 40a 12 20p 7 25p	9 17a 12 27p 2 10p 9 12p		1 1 1 1	212 216 716 230		S
Tri Cities, Tenn., Va.	6 30p	12 30a	Ex Sa	4	228/358	BNA	D/
Tupelo, Miss.	8 00a	1 20p		5	210/834	MEM	S/
University/Oxford, Miss.	3 00p	6 05p	Ex Sa	2	222/837	MEM	S/
Washington, D.C. (Dulles Intl Airport)	12 20p	6 18p		5	716		D

**From Mobile, Ala. Pascagoula, Miss.**  
**To**

**342-0733**  
**800-241-2521**  
 For Air Freight Call 344-5111

Anderson, S.C.	7 30a 5 36p	12 43p 9 34p	Ex Sa	2 2	512/825 142/871	ATL ATL	S/ S/
Athens, Ga.	7 30a 5 36p 5 36p	11 58a 8 54p 8 54p	Ex Sa Sa Only	1 1 1	512/825 142/871 142/883	ATL ATL ATL	S/ S/ S/
Atlanta, Ga.	7 00a 7 30a 12 05p 5 36p 8 20p	9 30a 9 25a 1 58p 7 29p 11 20p		1 0 0 0 2	140 512 136 142 520		S S S S
Baton Rouge, La.	11 15a	12 55p	Ex Su	1	413/340	MSY	
Birmingham, Ala.	7 00a 5 05p	7 40a 5 45p		0 0	140 616		S
Charleston, S.C.	7 30a	12 03p		2	512/849	ATL	S/
Charlotte, N.C.	7 30a	1 53p		4	512/825	ATL	S/
Chattanooga, Tenn.	8 25a 6 18p	1 17p 10 43p	Ex Sa	2 3	131/412 174/416	MEM MEM	S/ S/
Chicago, Ill. (Midway Airport)	10 05a 6 18p	1 10p 9 36p		2 2	210 174		L S
Columbia, S.C.	7 30a	11 09a		1	512/849	ATL	S/
Columbus, Ga.	7 30a 7 30a 12 15p	11 26a 11 26a 1 55p	Ex Sa Su Sa Su Only	1 1 0	512/823 512/805 321	ATL ATL	S/ S/
Dothan, Ala.	7 30a 11 15a 5 36p 8 20p	10 27a 1 36p 8 59p 9 31p	Ex Su	2 2 1 1	512/513 413/516 142/523 520	ATL MSY ATL	S/ /S S/
Eglin A.F.B./Fort Walton Beach, Fla.	6 50p 8 20p 8 45p	7 20p 8 50p 9 15p		0 0 0	227 520 521		
Florence/Sheffield/Tuscumbia, Ala.	6 18p	9 37p		2	174/846	MEM	S/
Greenville, Miss.	11 15a	2 13p	Ex Su	3	413/340	MSY	

	Leave	Arrive	Freq.	Stops	Flight No.	Connect At	Meal
Greenville/Spartanburg, S.C.	12 05p 5 36p 5 36p	4 40p 9 10p 9 39p	Ex Sa Sa Only	1 1 2	136/173 142/177 142/883	ATL ATL ATL	S/ S/ S/
Greenwood, S.C.	7 30a 5 36p	1 06p 10 02p	Ex Sa	3 3	512/825 142/871	ATL ATL	S/ S/
Gulfport/Biloxi, Miss.	10 42a 6 18p 8 17p	11 02a 6 38p 8 37p		0 0 0	133 174 717		
Huntsville/Decatur, Ala.	7 30a 5 36p 6 18p	9 58a 8 33p 9 03p	Ex Sa	1 1 2	512/163 142/249 174/416	ATL ATL MEM	S/ S/ S/
Jackson/Vicksburg, Miss.	10 05a	10 36a		0	210		
Jackson, Tenn.	10 05a 6 18p	12 55p 9 25p	Ex Sa	2 2	210/414 174/358	MEM MEM	S/
Knoxville, Tenn.	8 25a 12 05p 6 18p	1 57p 4 53p 11 53p	Ex Sa	3 2 4	131/412 136/418 174/358	MEM BNA MEM	S/ S/ S/
Memphis, Tenn.	8 25a 10 05a 11 15a 6 18p	10 33a 11 28a 2 58p 7 48p	Ex Su	1 1 4 1	131 210 413/340 174		S S MSY S
Miami, Fla.	7 00a 12 15p 6 50p	11 28a 6 38p 10 39p		2 4 2	140/215 321/225 227	BHM CSG	S/B
Monroe, La.	11 15a	1 36p	Ex Su	2	413/340	MSY	
Moultrie/Thomasville, Ga.	7 30a 7 30a 5 36p	12 22p 12 22p 9 03p	Ex Sa Su Sa Su Only	2 2 1	512/823 512/805 142/829	ATL ATL ATL	S/ S/ S/
Nashville, Tenn.	10 05a 12 05p 5 05p 6 18p	1 35p 2 24p 6 35p 10 05p	Ex Sa	3 1 1 3	210/414 136 616 174/358	MEM	S/
New Orleans, La.	8 25a 11 15a 5 55p 8 17p	8 55a 11 45a 6 25p 9 15p	Ex Su	0 0 0 1	131 413 617 717		S
New York, N.Y./Newark, N.J.	12 15p	4 40pⓄ		2	321		L
Orlando, Fla.	7 00a 12 15p 6 50p	10 34a 5 43p 9 44p		1 3 1	140/215 321/225 227	BHM CSG	S/B
Panama City, Fla.	12 15p	3 04p		1	321/225	CSG	
St. Louis, Mo.	8 25a 10 05a 6 18p	11 41a 12 50p 9 33p		2 2 2	131 210/508 174/350	MEM MEM	S /S S/
Tri Cities, Tenn., Va.	8 25a 12 05p 6 18p	2 39p 5 32p 12 30a	Ex Sa	4 3 5	131/412 136/418 174/358	MEM BNA MEM	S/ S/ S/
Tupelo, Miss.	10 05a 6 18p	1 20p 9 00p		2 2	210/834 174/828	MEM MEM	S/
Valdosta, Ga.	7 30a 7 30a 12 05p 5 36p	12 51p 12 51p 5 22p 9 32p	Ex Sa Su Sa Su Only Ex Sa	3 3 1 2	512/823 512/805 136/827 142/829	ATL ATL ATL	S/ S/ S/
Washington, D.C. (Dulles Intl Airport)	12 15p	3 33p		1	321		L

**From Monroe, La.**  
**To**

**325-4601**  
 For Air Freight Call 323-6571

Anniston, Ala.	7 32a	12 06p		4	334/812	MEM	
Atlanta, Ga.	7 32a 1 50p 6 50p	2 00p 7 30p 11 25p	Ex Sa	5 3 4	334/812 340/244 350/416	MEM MEM MEM	
Baton Rouge, La.	10 35a 1 20p 9 43p	11 06a 1 51p 10 14p		0 0 0	331 339 353		
Birmingham, Ala.	7 32a 1 50p	9 56a 4 26p		2 2	334/211 340/229	MEM MEM	
Chattanooga, Tenn.	6 50p	10 43p	Ex Sa	3	350/416	MEM	
Chicago, Ill. (Midway Airport)	7 32a 1 50p 6 50p	10 11a 6 00p 9 36p		2 2 2	334 340/220 350/174	MEM MEM	B /S



	Leave	Arrive	Freq.	Stops	Flight No.	Connect At	Meal
Crossville, Tenn.	7 32a	12 29p	Ex Sa	5	334/842	MEM	
Dothan, Ala.	10 35a	1 36p		3	331/516	MSY	/S
Eglin A.F.B./Fort Walton Beach, Fla.	10 35a 1 50p	12 52p 7 20p		2 4	331/516 340/227	MSY MEM	/S
Florence/Sheffield/Tuscumbia, Ala.	6 50p	9 37p		2	350/846	MEM	
Golden Triangle Regional Airport, Miss.	7 32a 6 50p	10 55a 9 17p		3 2	334/812 350/355	MEM MEM	
Greenville, Miss.	7 32a 1 50p 6 50p	7 55a 2 13p 7 13p		0 0 0	334 340 350		
Gulfport/Biloxi, Miss.	1 20p	4 45p		2	339/142	MSY	
Hattiesburg, Miss.	1 20p	3 35p	Ex Sa	2	339/836	MSY	
Huntsville/Decatur, Ala.	7 32a 1 50p 6 50p	10 03a 5 33p 9 03p	Ex Su Ex Sa	2 2 2	334/413 340/244 350/416	MEM MEM MEM	
Jackson, Tenn.	7 32a 6 50p	10 12a 9 25p	Ex Sa Ex Sa	2 2	334/842 350/358	MEM MEM	
Knoxville, Tenn.	6 50p	11 53p	Ex Sa	4	350/358	MEM	
Laurel, Miss.	1 20p	4 02p	Ex Sa	3	339/836	MSY	
Memphis, Tenn.	7 32a 1 50p 6 50p	8 35a 2 58p 7 55p		1 1 1	334 340 350		
Miami, Fla.	7 32a 1 50p	1 00p 8 17p		3 5	334/219 340/229	MEM MEM	/B /D
Mobile, Ala./Pascagoula, Miss.	1 20p	4 45p		2	339/616	MSY	
Montgomery, Ala.	7 32a 1 50p	10 35a 5 06p		3 3	334/211 340/229	MEM MEM	
Nashville, Tenn.	7 32a 6 50p	11 10a 10 05p	Ex Sa Ex Sa	3 3	334/842 350/358	MEM MEM	
New Orleans, La.	10 35a 1 20p 9 43p	11 39a 2 24p 10 47p		1 1 1	331 339 353		
Orlando, Fla.	7 32a 1 50p	12 05p 7 22p		2 4	334/219 340/229	MEM MEM	/B /D
Shelbyville/Tullahoma, Tenn.	7 32a	11 54a	Ex Sa	4	334/842	MEM	
St. Louis, Mo.	7 32a 1 50p 6 50p	9 43a 5 48p 9 33p		2 2 2	334/234 340/415 350	MEM MEM	/S
Tri Cities, Tenn., Va.	6 50p	12 30a	Ex Sa	5	350/358	MEM	
Tupelo, Miss.	7 32a 6 50p	10 20a 9 00p		2 2	334/812 350/828	MEM MEM	
Tuscaloosa, Ala.	6 50p	9 51p		3	350/828	MEM	
University/Oxford, Miss.	7 32a	10 00a	Ex Su	2	334/833	MEM	
From <b>Montgomery, Ala.</b> To							<b>263-3827</b> For Air Freight Call 263-3819
Birmingham, Ala.	9 25a 3 00p	9 50a 3 27p		0 0	212 220		
Chicago, Ill. (Midway Airport)	9 25a 3 00p	1 10p 6 00p		2 2	212/210 220	MEM	/L S
Eglin A.F.B./Fort Walton Beach, Fla.	10 50a	1 57p		1	211/716	TLH	
Greenville, Miss.	9 25a	12 30p		2	212/339	MEM	
Jackson, Tenn.	9 25a	12 55p		2	212/414	MEM	
Memphis, Tenn.	9 25a 3 00p	10 48a 4 20p		1 1	212 220		
Miami, Fla.	10 50a 5 21p	2 20p 8 17p		2 1	211 229		S D
Mobile, Ala./Pascagoula, Miss.	3 00p	5 42p		1	220/617	BHM	
Monroe, La.	9 25a	1 03p		3	212/339	MEM	
New Orleans, La.	3 00p	6 25p		2	220/617	BHM	

	Leave	Arrive	Freq.	Stops	Flight No.	Connect At	Meal
Orlando, Fla.	10 50a 5 21p	1 25p 7 22p		1 0	211 229		S D
St. Louis, Mo.	9 25a 3 00p	12 50p 5 48p		2 2	212/508 220/415	MEM MEM	/S
Tallahassee, Fla.	10 50a	12 27p		0	211		
From <b>Moultrie, Ga.</b> <b>Thomasville, Ga.</b> To							<b>985-4048</b> <b>226-7074</b>
Atlanta, Ga.	7 40a 3 30p 3 30p	8 47a 4 37p 4 37p	Ex Sa Su Sa Su Only	0 0 0	822 870 808		S
Columbia, S.C.	7 40a	11 09a		1	822/849	ATL	S/
Golden Triangle Regional Airport, Miss.	3 30p 6 01p	6 01p	Ex Sa Su Sa Su Only	2 2	870/819 808/819	ATL ATL	
Huntsville/Decatur, Ala.	7 40a 3 30p 3 30p	9 58a 4 38p 4 38p	Ex Sa Su Sa Su Only	1 1 1	822/163 870/169 808/169	ATL ATL ATL	S/
Jacksonville, Fla.	12 32p	1 47p	Ex Sa Su	1	823		
Memphis, Tenn.	3 30p 3 30p	7 24p 7 24p	Ex Sa Su Sa Su Only	4 4	870/819 808/819	ATL ATL	
Meridian, Miss.	7 40a	11 09a		2	822/137	ATL	S/
Mobile, Ala./Pascagoula, Miss.	7 40a 3 30p 3 30p	10 27a 6 03p 6 03p	Ex Sa Su Sa Su Only	1 1 1	822/133 870/174 808/174	ATL ATL ATL	S/
Nashville, Tenn.	3 30p 3 30p	5 20p 5 20p	Ex Sa Su Sa Su Only	2 2	870/169 808/169	ATL ATL	
Tupelo, Miss.	3 30p 3 30p	6 42p 6 42p	Ex Sa Su Sa Su Only	3 3	870/819 808/819	ATL ATL	
Tuscaloosa, Ala.	7 40a 3 30p 3 30p	10 34a 5 23p 5 23p	Ex Sa Su Sa Su Only	1 1 1	822/137 870/819 808/819	ATL ATL ATL	S/
Valdosta, Ga.	12 32p 12 32p 9 13p	12 51p 12 51p 9 32p	Ex Sa Su Sa Su Only	0 0 0	823 805 829		
From <b>Muscle Shoals, Ala.</b> (See Florence/Sheffield/Tuscumbia, Muscle Shoals, Ala.)							<b>383-4581</b>
From <b>Nashville, Tenn.</b> To							<b>242-8381</b> For Air Freight Call 256-6251
Albany, Ga.	6 55p	10 01p		1	616/857	ATL	
Anderson, S.C.	5 40p	9 34p	Ex Sa	2	168/871	ATL	
Anniston, Ala.	6 55p	9 07p	Ex Sa	1	616/820	ATL	
Athens, Ga.	5 40p 5 40p	8 54p 8 54p	Ex Sa Sa Only	1 1	168/871 168/883	ATL ATL	
Atlanta, Ga.	1 50p 5 40p 6 55p	3 34p 7 24p 8 39p		0 0 0	414 168 616		
Baton Rouge, La.	7 50a 6 35p	11 06a 10 14p	Ex Sa	4 4	411/331 417/353	MEM MEM	S/
Birmingham, Ala.	7 30a 4 10p	8 05a 4 45p		0 0	215 617		S
Chicago, Ill. (Midway Airport)	6 35p	9 36p	Ex Sa	2	417/174	MEM	
Columbus, Ga.	1 50p	6 16p	Ex Sa	1	414/853	ATL	
Crossville, Tenn.	11 30a	12 29p	Ex Sa	1	842		
Dothan, Ala.	1 50p 6 55p	4 22p 8 59p		1 1	414/855 616/523	ATL ATL	
Eglin A.F.B./Fort Walton Beach, Fla.	1 50p 5 40p	5 29p 9 15p		2 2	414/519 168/521	ATL ATL	
Gadsden, Ala.	6 55p	9 36p	Ex Sa	2	616/820	ATL	
Golden Triangle Regional Airport, Miss.	7 50a 6 35p	10 55a 9 17p	Ex Sa	3 2	411/812 417/355	MEM MEM	S/



	Leave	Arrive	Freq.	Stops	Flight No.	Connect At	Meal
<b>From Nashville, Tenn. (Cont.)</b>							
To							
Greenville, Miss.	7 50a 6 35p	9 45a 8 55p	Ex Sa	2 2	411/331 417/353	MEM MEM	S/ S/
Greenville/Spartanburg, S.C.	1 50p 5 40p 5 40p	4 40p 9 10p 9 39p	Ex Sa Sa Only	1 2	414/173 168/177 168/883	ATL ATL ATL	
Greenwood, Miss.	7 50a 3 30p	10 39a 6 44p	Ex Su Ex Sa	3 3	411/833 847/837	MEM MEM	S/ S/
Greenwood, S.C.	5 40p	10 02p	Ex Sa	3	168/871	ATL	
Gulfport/Biloxi, Miss.	7 50a 4 10p	11 25a 6 38p		3 2	411/321 617/174	MEM MOB	S/ S/
Jackson/Vicksburg, Miss.	7 50a 3 30p	11 19a 5 53p	Ex Su Ex Sa	4 2	411/833 847/227	MEM MEM	S/ S/
Jackson, Tenn.	7 50a 3 30p 6 35p	8 20a 4 18p 7 05p	Ex Sa Ex Sa	0 0 0	411 847 417		S S S
Knoxville, Tenn.	3 20p 10 20p	4 53p 11 53p	Ex Sa	0 0	418 358		
Memphis, Tenn.	7 50a 3 30p 6 35p	8 55a 5 00p 7 40p	Ex Sa Ex Sa	1 1 1	411 847 417		S S S
Meridian, Miss.	5 40p 6 35p	9 15p 9 55p	Ex Sa Ex Sa	3 3	168/145 417/355	ATL MEM	
Miami, Fla.	7 30a 4 10p	11 28a 10 39p		2 4	215 617/227		SB SB
Mobile, Ala./Pascagoula, Miss.	7 50a 7 50a 4 10p 5 40p	11 05a 12 00n 5 42p 8 28p	Ex Su	3 4 1 1	411/413 411/321 617 168/521	MEM MEM ATL	S/ S/ S/ S/
Monroe, La.	7 50a 6 35p	10 18a 9 28p	Ex Sa	3 3	411/331 417/353	MEM MEM	S/ S/
Montgomery, Ala.	7 30a	10 35a		1	215/211	BHM	S/
Moultrie/Thomasville, Ga.	5 40p	9 03p		1	168/829	ATL	
Natchez, Miss.	7 50a 3 30p	12 07p 8 12p	Ex Su Ex Sa	5 5	411/833 847/837	MEM MEM	S/ S/
New Orleans, La.	7 50a 3 30p 4 10p 6 35p	10 08a 6 13p 6 25p 10 47p	Ex Sa	2 2 2 5	411/321 847/520 617 417/353	MEM MEM MEM	S/ S/ S/ S/
Orlando, Fla.	7 30a 4 10p	10 34a 9 44p		1 3	215 617/227		SB SB
Panama City, Fla.	1 50p 6 55p	4 58p 9 33p		1 2	414/519 616/523	ATL ATL	
Shelbyville/Tullahoma, Tenn.	11 30a 2 10p	11 54a 2 34p	Ex Sa Ex Sa	0 0	842 843		
St. Louis, Mo.	7 50a 3 30p 6 35p	11 41a 7 03p 9 33p	Ex Sa Ex Sa	2 2 2	411/131 847/238 417/350	MEM MEM MEM	S/ S/ S/
Tallahassee, Fla.	7 50a	12 27p		4	411/211	MEM	S/
Tri Cities, Tenn., Va.	3 20p 10 20p	5 32p 12 30a	Ex Sa	1 1	418 358		
Tupelo, Miss.	7 50a 6 35p	10 20a 9 00p	Ex Sa	2 2	411/812 417/828	MEM MEM	S/ S/
Tuscaloosa, Ala.	1 50p 5 40p 6 35p	5 23p 8 02p 9 51p	Ex Sa Ex Sa	1 1 3	414/819 168/145 417/828	ATL ATL MEM	
University/Oxford, Miss.	7 50a 3 30p	10 00a 6 05p	Ex Su Ex Sa	2 2	411/833 847/837	MEM MEM	S/ S/
Valdosta, Ga.	1 50p 5 40p	5 22p 9 32p	Ex Sa	1 2	414/827 168/829	ATL ATL	

<b>From Natchez, Miss.</b>							
<b>To</b>							
Birmingham, Ala.	12 17p	5 45p	Ex Su	4	833/616	MSY	
Chattanooga, Tenn.	5 04p	10 43p	Ex Sa	5	836/416	MEM	

**442-6963**

	Leave	Arrive	Freq.	Stops	Flight No.	Connect At	Meal
Chicago, Ill. (Midway Airport)	9 44a 5 04p	1 10p 9 36p	Ex Su Ex Sa	2 4	830/210 836/174	JAN MEM	/L
Eglin A.F.B./Fort Walton Beach, Fla.	5 04p	7 20p	Ex Sa	2	836/227	JAN	
Florence/Sheffield/Tuscumbia, Ala.	5 04p	9 37p	Ex Sa	4	836/846	MEM	
Greenwood, Miss.	9 44a 5 04p	11 02a 6 22p	Ex Su Ex Sa	1 1	830 836		
Gulfport/Biloxi, Miss.	12 17p	4 45p	Ex Su	3	833/142	MSY	
Hattiesburg, Miss.	12 17p 8 22p	1 26p 9 30p	Ex Su Ex Sa	1 1	833 837		
Huntsville/Decatur, Ala.	5 04p	9 03p	Ex Sa	4	836/416	MEM	
Jackson/Vicksburg, Miss.	9 44a 5 04p	10 17a 5 37p	Ex Su Ex Sa	0 0	830 836		
Jackson, Tenn.	9 44a 5 04p	12 55p 9 25p	Ex Su Ex Sa	4 4	830/414 836/358	MEM MEM	
Laurel, Miss.	12 17p 8 22p	12 59p 9 04p	Ex Su Ex Sa	0 0	833 837		
Memphis, Tenn.	9 44a 9 44a 5 04p	11 28a 12 14p 7 39p	Ex Su Ex Su Ex Sa	1 3 3	830/210 830 836	JAN	
Miami, Fla.	5 04p	10 39p	Ex Sa	4	836/227	JAN	
Mobile, Ala./Pascagoula, Miss.	12 17p	4 45p	Ex Su	3	833/616	MSY	
Nashville, Tenn.	9 44a 5 04p	1 35p 10 05p	Ex Su Ex Sa	5 5	830/414 836/358	MEM MEM	
New Orleans, La.	12 17p 8 22p	2 16p 10 20p	Ex Su Ex Sa	2 2	833 837		
Orlando, Fla.	5 04p	9 44p	Ex Sa	3	836/227	JAN	
St. Louis, Mo.	5 04p	9 33p	Ex Sa	4	836/350	MEM	
Tupelo, Miss.	9 44a 5 04p	1 20p 9 00p	Ex Su Ex Sa	4 4	830/834 836/828	MEM MEM	
University/Oxford, Miss.	9 44a 5 04p	11 41a 7 01p	Ex Su Ex Sa	2 2	830 836		

**From Newark, N.J.**  
(See New York, N.Y./Newark, N.J.)  
**800-241-9385**  
Surrounding Areas Dial  
800-241-9385

**From New Orleans, La.**  
To  
For Air Freight Call 721-3429  
**525-0423**

Anderson, S.C.	5 50a 4 20p	12 43p 9 34p	Ex Sa	5 4	140/825 142/871	ATL ATL	S/ S/
Athens, Ga.	5 50a 4 20p 4 20p	11 58a 8 54p 8 54p	Ex Sa Sa Only	4 3 3	140/825 142/871 142/883	ATL ATL ATL	S/ S/ S/
Atlanta, Ga.	5 50a 12 05p 4 20p 7 10p	9 30a 3 25p 7 29p 11 20p		3 2 2 4	140 516 142 520		S S S S
Baton Rouge, La.	6 05a 12 30p 5 25p	6 30a 12 55p 5 50p		0 0 0	334 340 350		S S S
Birmingham, Ala.	5 50a 4 15p	7 40a 5 45p		2 1	140 616		S S
Charleston, S.C.	5 50a	12 03p		5	140/849	ATL	S/
Chattanooga, Tenn.	9 35a 7 05p	1 17p 10 43p	Ex Sa	1 2	131/412 416	MEM	
Chicago, Ill. (Midway Airport)	6 05a 9 35a 12 30p 5 25p	10 11a 1 10p 6 00p 9 36p		4 1 4 4	334 131/210 340/220 350/174	MEM MEM MEM	SB /L /S
Columbia, S.C.	5 50a	11 09a		4	140/849	ATL	S/
Columbus, Ga.	5 50a 5 50a 11 00a 12 05p	11 26a 11 26a 1 55p 4 40p	Ex Sa Su Sa Su Only	4 2 2 2	140/823 140/805 321 516/716	ATL ATL VPS	S/ S/ S/



	Leave	Arrive	Freq.	Stops	Flight No.	Connect At	Meal
Dothan, Ala.	12 05p 7 10p	1 36p 9 31p		1 3	516 520		S
Eglin A.F.B./Fort Walton Beach, Fla.	12 05p 4 20p 7 10p	12 52p 7 20p 8 50p		0 2 2	516 142/227 520	MOB	S
Florence/Sheffield/Tuscumbia, Ala.	5 25p 7 05p	9 37p 9 37p	Ex Sa	4 1	350/846 416/846	MEM MEM	
Greenville, Miss.	6 05a 12 30p 5 25p	7 55a 2 13p 7 13p		2 2 2	334 340 350		S
Greenville/Spartanburg, S.C.	12 05p 4 20p 4 20p	4 40p 9 10p 9 39p	Ex Sa Sa Only	3 3 4	516/173 142/177 142/883	ATL ATL ATL	S/ S/ S/
Greenwood, Miss.	7 35a 2 55p 3 00p	11 02a 6 22p 6 22p	Ex Su Ex Sa Ex Sa	4 4 1	830 836 244/836		S
Greenwood, S.C.	4 20p	10 02p	Ex Sa	5	142/871	ATL	S/
Gulfport/Biloxi, Miss.	5 50a 11 00a 4 20p 7 10p	6 15a 11 25a 4 45p 7 35p		0 0 0 0	140 321 142 520		S
Hattiesburg, Miss.	7 35a 2 55p	8 15a 3 35p	Ex Su Ex Sa	0 0	830 836		S
Huntsville/Decatur, Ala.	6 05a 3 00p 7 05p	10 03a 5 33p 9 03p	Ex Su Ex Sa	4 2 1	334/413 244 416	MEM	S/
Jackson/Vicksburg, Miss.	7 35a 2 55p 3 00p	10 17a 5 37p 3 35p	Ex Su Ex Sa	3 3 0	830 836 244		S
Jackson, Tenn.	6 05a 10 40a 7 05p	10 12a 12 55p 9 25p	Ex Sa Ex Sa	4 1 1	334/842 508/414 416/358	MEM MEM MEM	S/
Knoxville, Tenn.	9 35a 7 05p	1 57p 11 53p	Ex Sa	2 3	131/412 416/358	MEM MEM	
Laurel, Miss.	7 35a 2 55p	8 42a 4 02p	Ex Su Ex Sa	1 1	830 836		S
Memphis, Tenn.	6 05a 9 35a 10 40a 12 30p 3 00p 5 25p 7 05p	8 35a 10 33a 11 38a 2 58p 4 28p 7 55p 8 03p		3 0 0 3 1 3 0	334 131 508 340 244 350 416		S
Miami, Fla.	5 50a 12 05p 4 20p	11 28a 5 48p 10 39p		4 3 4	140/215 516/713 142/227	BHM VPS MOB	S/B S/
Mobile, Ala./Pascagoula, Miss.	5 50a 11 00a 4 15p 4 20p 7 10p	6 45a 12 00n 4 45p 5 20p 8 05p		1 1 0 1 1	140 321 616 142 520		S
Monroe, La.	6 05a 12 30p 5 25p	7 16a 1 36p 6 36p		1 1 1	334 340 350		S
Nashville, Tenn.	6 05a 10 40a 12 05p 4 15p 7 05p	11 10a 1 35p 3 49p 6 35p 10 05p	Ex Sa	5 2 3 2 2	334/842 508/414 516/617 616 416/358	MEM MEM ATL MEM	S/ S/
Natchez, Miss.	7 35a 2 55p	9 34a 4 54p	Ex Su Ex Sa	2 2	830 836		S
New York, N.Y./Newark, N.J.	11 00a 12 05p	4 40p 7 30p		4 4	321 516/716		L S/D
Orlando, Fla.	12 05p 4 20p	4 53p 9 44p		2 3	516/713 142/227	VPS MOB	S/
St. Louis, Mo.	6 05a 9 35a 10 40a 3 00p 5 25p 7 05p	9 43a 11 41a 12 50p 5 48p 9 33p 9 33p	Ex Sa	4 1 1 2 4 1	334/234 131 508 244/415 350 416/350	MEM MEM MEM	S/S S
Tallahassee, Fla.	12 05p	3 54p		1	516/713	VPS	S/
Tri Cities, Tenn., Va.	9 35a 7 05p	2 39p 12 30a	Ex Sa	3 4	131/412 416/358	MEM MEM	

	Leave	Arrive	Freq.	Stops	Flight No.	Connect At	Meal
Tupelo, Miss.	6 05a 10 40a 5 25p 7 05p	10 20a 1 20p 9 00p 9 00p	Ex Sa	4 1 4 1	334/812 508/834 350/828 416/828	MEM MEM MEM MEM	S/
University/Oxford, Miss.	7 35a 2 55p 3 00p	11 41a 7 01p 7 01p	Ex Su Ex Sa Ex Sa	5 5 2	830 836 244/836		S JAN
Washington, D.C. (Dulles Intl Airport)	11 00a 12 05p	3 33p 6 18p		3 3	321 516/716	VPS	L S/D
<b>From</b> <b>New York, N.Y.</b> <b>Newark, N.J.</b> <b>765-4210</b> <b>800-241-9385</b> Surrounding Areas Dial <b>800-241-9385</b> For Laguardia Air Freight Call <b>335-1211</b>							
To							
Albany, Ga.	8 00p	11 28p		2	719		
Columbus, Ga.	10 55a 5 10p 8 00p	1 46p 7 58p 10 48p		1 1 1	713 717 719		L D
Dothan, Ala.	10 55a 8 00p	1 25p 11 00p		2 3	713 719		L
Eglin A.F.B./Fort Walton Beach, Fla.	10 55a 8 00p	2 00p 11 35p		3 4	713 719		L
Gulfport/Biloxi, Miss.	10 55a 5 10p	2 58p 8 37p		4 3	713/517 717	VPS	L/ D
Miami, Fla.	10 55a	5 48p		6	713		L
Mobile, Ala./Pascagoula, Miss.	5 10p	8 03p		2	717		D
New Orleans, La.	10 55a 5 10p	3 35p 9 15p		5 4	713/517 717	VPS	L/ D
Orlando, Fla.	10 55a	4 53p		5	713		L
Panama City, Fla.	10 55a	3 04p		2	713/225	CSG	L/
Tallahassee, Fla.	10 55a	3 54p		4	713		L
Washington, D.C. (Dulles Intl Airport)	10 55a 5 10p 8 00p	11 53a 6 08p 8 58p		0 0 0	713 717 719		
<b>From</b> <b>Orlando, Fla.</b> <b>(Orlando Jet Port At Mc Coy)</b> <b>851-4310</b> Surrounding Areas Dial <b>800-241-2521</b> For Air Freight Call: <b>851-0703</b>							
To							
Anniston, Ala.	11 42a	3 07p		4	216/818	ATL	
Atlanta, Ga.	9 02a 11 42a 1 25p	12 57p 2 35p 6 43p		2 3 3	210/511 716 716/856	VPS DHN	
Birmingham, Ala.	8 32a 2 45p 7 32p	9 50a 3 27p 7 47p		2 1 0	212 220 228		S D
Chicago, Ill. (Midway Airport)	9 02a 2 45p	1 10p 6 00p		4 3	210 220		L S
Columbus, Ga.	11 42a 1 25p	1 54p 4 40p		2 3	216 716		
Dothan, Ala.	1 25p	3 01p		2	716		
Eglin A.F.B./Fort Walton Beach, Fla.	9 02a 1 25p 8 27p	9 02a 1 57p 9 27p		0 1 2	210 716 230		
Gadsden, Ala.	11 42a	3 36p		5	216/818	ATL	
Greenville, Miss.	9 02a	12 30p		4	210/339	MEM	
Greenville/Spartanburg, S.C.	11 42a	4 40p		4	216/173	ATL	
Greenwood, Miss.	4 00p	6 44p	Ex Sa	2	222/837	MEM	S/
Gulfport/Biloxi, Miss.	9 02a 1 25p	11 02a 2 58p		2 2	210/133 716/517	MOB VPS	
Jackson/Vicksburg, Miss.	9 02a	10 36a		2	210		
Jackson, Tenn.	9 02a	12 55p		4	210/414	MEM	



	Leave	Arrive	Freq.	Stops	Flight No.	Connect At	Meal
<b>From Orlando, Fla. (Cont.)</b>							
<b>To</b>							
Knoxville, Tenn.	7 32p	11 53p	Ex Sa	2	228/358	BNA	D/
Memphis, Tenn.	8 32a 9 02a 2 45p 4 00p	10 48a 11 28a 4 20p 4 45p		3 3 2 0	212 210 220 222		S   S
Miami, Fla.	9 19a 10 48a 12 20p 1 40p 5 08p 5 58p 7 37p 9 59p	9 59a 11 28a 1 00p 2 20p 5 48p 6 38p 8 17p 10 39p		0 0 0 0 0 0 0 0	213 215 219 211 713 225 229 227		
Mobile, Ala./Pascagoula, Miss.	9 02a 2 45p	9 52a 5 42p		1 2	210 220/617	BHM	
Monroe, La.	9 02a	1 03p		5	210/339	MEM	
Montgomery, Ala.	8 32a 2 45p	9 10a 2 46p		1 0	212 220		S
Nashville, Tenn.	11 42a 7 32p	3 49p 8 37p		4 1	216/617 228	ATL	D
New Orleans, La.	9 02a 1 25p	11 45a 3 35p	Ex Su	2 3	210/413 716/517	MOB VPS	
New York, N.Y./Newark, N.J.	1 25p	7 30pⓄ		5	716		D
Panama City, Fla.	11 42a 8 27p	12 06p 8 51p		1 1	216 230		
St. Louis, Mo.	9 02a 4 00p	12 50p 5 48p		4 1	210/508 222/415	MEM MEM	/S S/
Tallahassee, Fla.	8 32a 11 42a 1 25p 8 27p	9 17a 12 27p 2 10p 9 12p		0 0 0 0	212 216 716 230		S
Tri Cities, Tenn., Va.	7 32p	12 30a	Ex Sa	3	228/358	BNA	D/
Tupelo, Miss.	9 02a	1 20p		4	210/834	MEM	
University/Oxford, Miss.	4 00p	6 05p	Ex Sa	1	222/837	MEM	S/
Washington, D.C. (Dulles Intl Airport)	1 25p	6 18p		4	716		D
<b>From Oxford, Miss. (See University/Oxford, Miss.) 234-2211</b>							
<b>From Panama City, Fla. 769-2221</b>							
<b>To</b>							
Anderson, S.C.	7 00a 5 08p	12 43p 9 34p	Ex Sa	3 3	510/825 519/871	ATL ATL	S/ S/
Anniston, Ala.	7 00a 12 20p 5 08p	10 57a 3 07p 9 07p	Th Only Ex Sa	2 2 2	510/803 216/818 519/820	ATL ATL ATL	S/  S/
Athens, Ga.	7 00a 5 08p 5 08p	11 58a 8 54p 8 54p	Ex Sa Sa Only	2 2 2	510/825 519/871 519/883	ATL ATL ATL	S/  S/
Atlanta, Ga.	7 00a 11 09a 12 20p 5 08p	9 15a 12 57p 2 35p 7 40p		1 0 1 1	510 511 216 519		S
Birmingham, Ala.	6 41a	9 50a		2	213/212	TLH	S/
Charleston, S.C.	7 00a	12 03p		3	510/849	ATL	S/
Charlotte, N.C.	7 00a	1 53p		5	510/825	ATL	S/
Columbia, S.C.	7 00a	11 09a		2	510/849	ATL	S/
Columbus, Ga.	12 20p	1 54p		0	216		
Dothan, Ala.	7 00a	7 23a		0	510		S
Eglin A.F.B./Fort Walton Beach, Fla.	5 08p 9 06p	5 29p 9 27p		0 0	519 230		

	Leave	Arrive	Freq.	Stops	Flight No.	Connect At	Meal
Florence/Sheffield/Tuscumbia, Ala.	11 09a 5 08p	1 48p 9 12p		2 3	511/245 519/249	ATL ATL	
Gadsden, Ala.	12 20p 5 08p	3 36p 9 36p	Ex Sa	3 3	216/818 519/820	ATL ATL	
Golden Triangle Regional Airport, Miss.	5 08p	8 35p	Ex Sa	3	519/145	ATL	
Greenville/Spartanburg, S.C.	12 20p 5 08p 5 08p	4 40p 9 10p 9 39p	Ex Sa Sa Only	2 2 3	216/173 519/177 519/883	ATL ATL ATL	
Greenwood, S.C.	7 00a 5 08p	1 06p 10 02p	Ex Sa	4 4	510/825 519/871	ATL ATL	S/ S/
Huntsville/Decatur, Ala.	7 00a 11 09a 5 08p	9 58a 1 13p 8 33p		2 1 2	510/163 511/245 519/249	ATL ATL ATL	S/ S/ S/
Memphis, Tenn.	6 41a	10 48a		3	213/212	TLH	S/
Meridian, Miss.	7 00a 5 08p	11 09a 9 15p	Ex Sa	3 4	510/137 519/145	ATL ATL	S/ S/
Miami, Fla.	6 41a 3 20p	9 59a 6 38p		2 2	213 225		S
Montgomery, Ala.	6 41a	9 10a		1	213/212	TLH	S/
Nashville, Tenn.	11 09a 12 20p	2 24p 3 49p		1 2	511/136 216/617	ATL ATL	
New York, N.Y./Newark, N.J.	12 20p	4 40pⓄ		2	216/321	CSG	/L
Orlando, Fla.	6 41a 3 20p	9 04a 5 43p		1 1	213 225		S
Tallahassee, Fla.	6 41a 3 20p	8 06a 4 45p		0 0	213 225		S
Tuscaloosa, Ala.	7 00a 5 08p	10 34a 8 02p	Ex Sa	2 2	510/137 519/145	ATL ATL	S/ S/
Washington, D.C. (Dulles Intl Airport)	12 20p	3 33p		1	216/321	CSG	/L

**From**  
**Pascagoula, Miss.**  
(See Mobile, Ala./Pascagoula, Miss.) **800-241-2521**

**From**  
**Sheffield, Ala.**  
(See Florence/Sheffield/Tuscumbia, Muscle Shoals, Ala.) **383-4581**

**From**  
**Shelbyville, Tenn.**  
**Tullahoma, Tenn.**  
**To** **684-5994**  
**684-5994**

Birmingham, Ala.	2 45p	4 45p	Ex Sa	1	847/617	BNA	
Crossville, Tenn.	11 59a	12 29p	Ex Sa	0	842		
Greenwood, Miss.	2 45p	6 44p	Ex Sa	4	847/837	MEM	
Jackson/Vicksburg, Miss.	2 45p	5 53p	Ex Sa	3	847/227	MEM	
Jackson, Tenn.	2 45p	4 18p	Ex Sa	1	847		
Memphis, Tenn.	2 45p	5 00p	Ex Sa	2	847		
Mobile, Ala./Pascagoula, Miss.	2 45p	5 42p	Ex Sa	2	847/617	BNA	
Nashville, Tenn.	1 30p 2 45p	1 54p 3 09p	Ex Sa Ex Sa	0 0	845 847		
New Orleans, La.	2 45p	6 25p	Ex Sa	3	847/617	BNA	
St. Louis, Mo.	2 45p	7 03p	Ex Sa	3	847/238	MEM	
University/Oxford, Miss.	2 45p	6 05p	Ex Sa	3	847/837	MEM	

**From**  
**Spartanburg, S.C.**  
(See Greenville/Spartanburg, S.C.) **583-5441**

**From**  
**Starkville, Miss.**  
(See Golden Triangle Regional Airport, Miss.) **323-2622**



	Leave	Arrive	Freq.	Stops	Flight No.	Connect At	Meal
From <b>St. Louis, Mo.</b>							
<b>621-9177</b> For Air Freight Call 429-7524							
To							
Anniston, Ala.	8 00a	12 06p		3	321/812	MEM	S/
Atlanta, Ga.	8 00a 10 50a 12 20p 6 30p	2 00p 3 34p 6 43p 11 25p	Ex Sa	4 3 3 3	321/812 339/414 235/816 237/416	MEM MEM MEM MEM	S/ S/ S/ S/
Baton Rouge, La.	8 00a 10 50a 6 30p	11 06a 1 51p 10 14p		3 3 3	321/331 339 237/353	MEM MEM	S/ S/
Birmingham, Ala.	8 00a 12 20p 1 40p 6 30p	9 56a 2 11p 4 26p 8 18p		1 1 1 1	321/211 235 142/229 237	MEM MEM	S/ S MEM S
Chattanooga, Tenn.	6 30p	10 43p	Ex Sa	2	237/416	MEM	S/
Crossville, Tenn.	8 00a	12 29p	Ex Sa	4	321/842	MEM	S/
Dothan, Ala.	8 00a	1 36p		3	321/516	MSY	S/S
Egin A.F.B./Fort Walton Beach, Fla.	8 00a	12 52p		2	321/516	MSY	S/S
Florence/Sheffield/Tuscumbia, Ala.	6 30p 7 40p	9 37p 9 37p	Sa Only	1	237/846 301/846	MEM MEM	S/ S/
Golden Triangle Regional Airport, Miss.	8 00a 1 40p 6 30p 7 40p	10 55a 3 40p 9 17p 9 17p	Sa Only	2 1 1 1	321/812 142/816 237/355 301/355	MEM MEM MEM MEM	S/ S/ S/ MEM
Greenville, Miss.	8 00a 10 50a 6 30p	9 45a 12 30p 8 55p		1 1 1	321/331 339 237/353	MEM MEM	S/ S/ S/
Greenwood, Miss.	8 00a	10 39a	Ex Su	2	321/833	MEM	S/
Gulfport/Biloxi, Miss.	8 00a 1 40p	11 25a 4 45p		2 2	321 142		S S
Hattiesburg, Miss.	10 50a	3 35p	Ex Sa	5	339/836	MSY	
Huntsville/Decatur, Ala.	8 00a 1 40p 6 30p	10 03a 3 23p 9 03p	Ex Su	1 1 1	321/413 142/246 237/416	MEM MEM MEM	S/ S/ S/
Jackson/Vicksburg, Miss.	8 00a 1 40p	11 19a 4 03p	Ex Su	3 1	321/833 142/345	MEM MEM	S/ S/
Jackson, Tenn.	8 00a 10 50a 7 50p	10 12a 12 55p 9 25p	Ex Sa	1 1 1	321/842 339/414 358	MEM MEM	S/ S/ S/
Jacksonville, Fla.	12 20p 6 30p	4 25p 10 30p		2 2	235 237		S S
Knoxville, Tenn.	7 50p	11 53p	Ex Sa	3	358		
Laurel, Miss.	8 00a	12 59p	Ex Su	5	321/833	MEM	S/
Memphis, Tenn.	8 00a 10 50a 12 20p 1 40p 6 30p 7 40p 7 50p	8 48a 11 38a 1 08p 2 28p 7 18p 8 28p 8 38p		0 0 0 0 0 0 0	321 339 235 142 237 301 358		S S S S
Meridian, Miss.	6 30p 7 40p	9 55p 9 55p	Sa Only	2 2	237/355 301/355	MEM MEM	S/ S/
Miami, Fla.	8 00a 1 40p	1 00p 8 17p		2 4	321/219 142/229	MEM MEM	S/B /D
Mobile, Ala./Pascagoula, Miss.	8 00a 8 00a 1 40p 1 40p	11 05a 12 00n 4 45p 5 20p	Ex Su	2 3 2 3	321/413 321 142/616 142	MEM MEM MSY	S/ S S/
Monroe, La.	8 00a 10 50a 6 30p	10 18a 1 03p 9 28p		2 2 2	321/331 339 237/353	MEM MEM	S/ S/
Montgomery, Ala.	8 00a 1 40p	10 35a 5 06p		2 2	321/211 142/229	MEM MEM	S/ S/
Nashville, Tenn.	8 00a 10 50a 7 50p	11 10a 1 35p 10 05p	Ex Sa	2 2 2	321/842 339/414 358	MEM MEM	S/ S/
Natchez, Miss.	8 00a	12 07p	Ex Su	4	321/833	MEM	S/

	Leave	Arrive	Freq.	Stops	Flight No.	Connect At	Meal
New Orleans, La.	8 00a 10 50a 1 40p 6 30p	10 08a 2 24p 3 48p 10 47p		1 4 1 4	321 339 142 237/353		S S S/
Orlando, Fla.	8 00a 1 40p	12 05p 7 22p		1 3	321/219 142/229	MEM MEM	S/B /D
Shelbyville/Tullahoma, Tenn.	8 00a	11 54a	Ex Sa	3	321/842	MEM	S/
Tallahassee, Fla.	8 00a	12 27p		3	321/211	MEM	S/
Tri Cities, Tenn., Va.	7 50p	12 30a	Ex Sa	4	358		
Tupelo, Miss.	8 00a 10 50a 6 30p	10 20a 1 20p 9 00p		1 1 1	321/812 339/834 237/828	MEM MEM MEM	S/ S/ S/
Tuscaloosa, Ala.	1 40p 6 30p	4 21p 9 51p		2 2	142/816 237/828	MEM MEM	S/ S/
University/Oxford, Miss.	8 00a	10 00a	Ex Su	1	321/833	MEM	S/
From <b>Tallahassee, Fla.</b>							
<b>576-1165</b> Surrounding Areas Dial 800-241-2521 For Air Freight Call: 576-1836							
To							
Anniston, Ala.	12 42p	3 07p		3	216/818	ATL	
Atlanta, Ga.	12 42p	2 35p		2	216		
Birmingham, Ala.	9 33a	9 50a		1	212		
Chicago, Ill. (Midway Airport)	9 33a	1 10p		3	212/210	MEM	/L
Columbus, Ga.	12 42p 2 25p	1 54p 4 40p		1 2	216 716		
Dothan, Ala.	2 25p	3 01p		1	716		
Egin A.F.B./Fort Walton Beach, Fla.	2 25p 9 27p	1 57p 9 27p		0 1	716 230		
Gadsden, Ala.	12 42p	3 36p		4	216/818	ATL	
Greenville, Miss.	9 33a	12 30p		3	212/339	MEM	
Greenville/Spartanburg, S.C.	12 42p	4 40p		3	216/173	ATL	
Gulfport/Biloxi, Miss.	2 25p	2 58p		1	716/517	VPS	
Jackson, Tenn.	9 33a	12 55p		3	212/414	MEM	
Memphis, Tenn.	9 33a	10 48a		2	212		
Miami, Fla.	8 21a 12 42p 4 10p 5 00p	9 59a 2 20p 5 48p 6 38p		1 1 1 1	213 211 713 225		S S
Montgomery, Ala.	9 33a	9 10a		0	212		
Nashville, Tenn.	9 33a 12 42p	1 35p 3 49p		4 3	212/414 216/617	MEM ATL	
New Orleans, La.	2 25p	3 35p		2	716/517	VPS	
New York, N.Y./Newark, N.J.	12 42p 2 25p	4 40pⓄ 7 30pⓄ		3 4	216/321 4716	CSG	/L D
Orlando, Fla.	8 21a 12 42p 4 10p 5 00p	9 04a 1 25p 4 53p 5 43p		0 0 0 0	213 211 713 225		S S
Panama City, Fla.	12 42p 9 27p	12 06p 8 51p		0 0	216 230		
St. Louis, Mo.	9 33a	12 50p		3	212/508	MEM	/S
Washington, D.C. (Dulles Intl Airport)	12 42p 2 25p	3 33p 6 18p		2 3	216/321 716	CSG	/L D
From <b>Thomasville, Ga.</b>							
<b>226-7074</b> (See Moultrie/Thomasville, Ga.)							



From  
**Tri-Cities, Tenn., Va.  
 Bristol, Tenn., Va.  
 Johnson City Tenn.  
 Kingsport, Tenn.**

**323-4144  
 928-9226  
 323-4144**  
 For Bristol Air Freight Call:  
 323-6253  
 For Johnson City Air Freight Call  
 477-6253  
 For Kingsport Air Freight Call:  
 323-6253

To

	Leave	Arrive	Freq.	Stops	Flight No.	Connect At	Meal
Chattanooga, Tenn.	3 11p	4 18p		1	415		
Chicago, Ill. (Midway Airport)	3 11p 6 10p	6 00p 9 36p	Ex Sa	3	415/220 417/174	MEM MEM	/S
Golden Triangle Regional Airport, Miss.	7 20a 6 10p	10 55a 9 17p	Ex Sa	5	411/812 417/355	MEM MEM	S/
Greenville, Miss.	7 20a 6 10p	9 45a 8 55p	Ex Sa	4	411/331 417/353	MEM MEM	S/
Greenwood, Miss.	7 20a 3 11p	10 39a 6 44p	Ex Su Ex Sa	5	411/833 415/837	MEM MEM	S/
Gulfport/Biloxi, Miss.	7 20a 3 11p	11 25a 7 35p		5	411/321 415/520	MEM MEM	S/
Jackson/Vicksburg, Miss.	3 11p	5 53p		3	415/227	MEM	
Jackson, Tenn.	7 20a 6 10p	8 20a 7 05p	Ex Sa	2	411 417		S
Knoxville, Tenn.	7 20a 3 11p 6 10p	7 47a 3 38p 6 37p	Ex Sa	0	411 415 417		S
Memphis, Tenn.	7 20a 3 11p 6 10p	8 55a 4 20p 7 40p	Ex Sa	3	411 415 417		S
Meridian, Miss.	6 10p	9 55p	Ex Sa	5	417/355	MEM	
Mobile, Ala./Pascagoula, Miss.	7 20a 3 11p	11 05a 6 36p	Ex Su	5	411/413 415/227	MEM MEM	S/
Monroe, La.	7 20a 6 10p	10 18a 9 28p	Ex Sa	5	411/331 417/353	MEM MEM	S/
Nashville, Tenn.	7 20a 6 10p	7 35a 6 20p	Ex Sa	1	411 417		S
New Orleans, La.	7 20a 3 11p	10 08a 6 13p		4	411/321 415/520	MEM MEM	S/
St. Louis, Mo.	7 20a 3 11p 6 10p	11 41a 5 48p 9 33p	Ex Sa	4	411/131 3 415 417/350	MEM MEM	S/
Tupelo, Miss.	7 20a 6 10p	10 20a 9 00p	Ex Sa	4	411/812 417/828	MEM MEM	S/
University/Oxford, Miss.	7 20a 3 11p	10 00a 6 05p	Ex Su Ex Sa	4	411/833 415/837	MEM MEM	S/

From  
**Tullahoma, Tenn.**  
 (See Shelbyville/Tullahoma, Tenn.)

**684-5994**

From  
**Tupelo, Miss.**  
 To

**842-8700**

Albany, Ga.	10 30a	3 50p		3	812/525	ATL	
Anniston, Ala.	10 30a	12 06p		1	812		
Atlanta, Ga.	10 30a	2 00p		2	812		
Baton Rouge, La.	7 58a 6 52p	11 06a 10 14p		3	813/331 819/353	MEM MEM	S/
Chattanooga, Tenn.	6 52p	10 43p	Ex Sa	2	819/416	MEM	
Chicago, Ill. (Midway Airport)	7 58a 6 52p	10 11a 9 36p		1	813/334 819/174	MEM MEM	S/B
Columbus, Ga.	10 30a	3 13p		3	812/225	ATL	
Crossville, Tenn.	7 58a	12 29p	Ex Sa	4	813/842	MEM	S/
Dothan, Ala.	10 30a	4 22p		3	812/855	ATL	

	Leave	Arrive	Freq.	Stops	Flight No.	Connect At	Meal
Florence/Sheffield/ Tuscumbia, Ala.	6 52p	9 37p		1	819/846	MEM	
Golden Triangle Regional Airport, Miss.	10 30a	10 55a		0	812		
Greenville/Spartanburg, S.C.	10 30a	4 40p		3	812/173	ATL	
Gulfport/Biloxi, Miss.	7 58a 1 42p	11 25a 4 45p		2	813/321 835/142	MEM MEM	S/
Jackson/Vicksburg, Miss.	7 58a 1 42p	11 19a 4 03p	Ex Su	3	813/833 835/345	MEM MEM	S/
Jackson, Tenn.	7 58a 6 52p	10 12a 9 25p	Ex Sa Ex Sa	1	813/842 819/358	MEM MEM	S/
Knoxville, Tenn.	6 52p	11 53p	Ex Sa	3	819/358	MEM	
Laurel, Miss.	7 58a	12 59p	Ex Su	5	813/833	MEM	S/
Memphis, Tenn.	7 58a 1 42p 6 52p	8 30a 2 15p 7 24p		0	813 835 819		S
Miami, Fla.	7 58a 1 42p	1 00p 8 17p		2	813/219 835/229	MEM MEM	S/B /D
Mobile, Ala./Pascagoula, Miss.	7 58a 1 42p	11 05a 12 00n 5 20p	Ex Su	2	813/413 813/321 835/142	MEM MEM MEM	S/ S/ S/
Monroe, La.	7 58a 6 52p	10 18a 9 28p		2	813/331 819/353	MEM MEM	S/
Nashville, Tenn.	7 58a 6 52p	11 10a 10 05p	Ex Sa Ex Sa	2	813/842 819/358	MEM MEM	S/
Natchez, Miss.	7 58a	12 07p	Ex Su	4	813/833	MEM	S/
New Orleans, La.	7 58a 1 42p 6 52p	10 08a 3 48p 10 47p		1	813/321 835/142 819/353	MEM MEM MEM	S/
Orlando, Fla.	7 58a 1 42p	12 05p 7 22p		1	813/219 835/229	MEM MEM	S/B /D
Panama City, Fla.	10 30a	3 04p		4	812/225	ATL	
Shelbyville/Tullahoma, Tenn.	7 58a	11 54a	Ex Sa	3	813/842	MEM	S/
St. Louis, Mo.	7 58a 6 52p	9 43a 9 33p		1	813/234 819/350	MEM MEM	S/S
Tallahassee, Fla.	10 30a	4 45p		5	812/225	ATL	
Tri Cities, Tenn., Va.	6 52p	12 30a	Ex Sa	4	819/358	MEM	
Tuscaloosa, Ala.	9 15p	9 51p		0	828		
Valdosta, Ga.	10 30a	5 22p	Ex Sa	3	812/827	ATL	

From  
**Tuscaloosa, Ala.**  
 To

**759-4466**  
 For Air Freight Call 752-3543

Albany, Ga.	7 45a 12 00n	10 55a 3 50p	Ex Su	1	130/513 134/525	ATL ATL	S/
Anderson, S.C.	7 45a 4 33p	12 43p 9 34p	Ex Su Ex Sa	2	130/825 816/871	ATL ATL	S/
Athens, Ga.	7 45a 4 33p	11 58a 8 54p	Ex Su Ex Sa Sa Only	1	130/825 816/871 816/883	ATL ATL ATL	S/
Atlanta, Ga.	7 45a 12 00n 4 33p	9 27a 1 42p 6 43p	Ex Su	0	130 134 816		S
Charleston, S.C.	7 45a	12 03p	Ex Su	2	130/849	ATL	S/
Charlotte, N.C.	7 45a	1 53p	Ex Su	4	130/825	ATL	S/
Chicago, Ill. (Midway Airport)	7 10a 5 35p	10 11a 9 36p		2	813/334 819/174	MEM MEM	S/B
Columbia, S.C.	7 45a	11 09a	Ex Su	1	130/849	ATL	S/
Columbus, Ga.	7 45a 12 00n	11 26a 11 26a 3 13p	Ex Sa Su Sa Only	1	130/823 130/805 134/225	ATL ATL ATL	S/ S/ S/
Dothan, Ala.	7 45a	10 27a	Ex Su	2	130/513	ATL	S/
Eglin A.F.B./Fort Walton Beach, Fla.	7 45a 4 33p	10 19a 9 15p	Ex Su	1	130/511 816/521	ATL ATL	S/



	Leave	Arrive	Freq.	Stops	Flight No.	Connect At	Meal
Florence/Sheffield/Tuscumbia, Ala.	5 35p	9 37p		3	819/846	MEM	
Golden Triangle Regional Airport, Miss.	12 55p 5 35p 8 15p	1 15p 6 01p 8 35p	Ex Sa	0 0 0	135 819 145		
Greenville, Miss.	7 10a 5 35p	9 45a 8 55p		2 3	813/331 819/353	MEM MEM	S/
Greenville/Spartanburg, S.C.	4 33p 4 33p	9 10p 9 39p	Ex Sa Sa Only	1 2	816/177 816/883	ATL ATL	
Greenwood, Miss.	7 10a	10 39a	Ex Su	3	813/833	MEM	S/
Greenwood, S.C.	7 45a 4 33p	1 06p 10 02p	Ex Su Ex Sa	3 3	130/825 816/871	ATL ATL	S/
Jackson, Tenn.	7 10a 5 35p	10 12a 9 25p	Ex Sa Ex Sa	2 3	813/842 819/358	MEM MEM	S/
Jacksonville, Fla.	7 45a	1 47p	Ex Sa Su	4	130/823	ATL	S/
Memphis, Tenn.	7 10a 12 55p 5 35p	8 30a 1 59p 7 24p		1 1 2	813 135 819		S
Meridian, Miss.	10 44a 8 15p	11 09a 9 15p	Ex Sa	0 1	137 145		
Miami, Fla.	7 10a 12 00n 12 55p	1 00p 6 38p 8 17p		3 5 5	813/219 134/225 135/229	MEM ATL MEM	S/B /D
Monroe, La.	7 10a 5 35p	10 18a 9 28p		3 4	813/331 819/353	MEM MEM	S/
Moultrie/Thomasville, Ga.	7 45a 7 45a 4 33p	12 22p 12 22p 9 03p	Ex Sa Su Sa Only	2 2 1	130/823 130/805 816/829	ATL ATL ATL	S/ S/
Nashville, Tenn.	7 10a 12 00n 5 35p	11 10a 2 24p 10 05p	Ex Sa Ex Sa	3 1 4	813/842 134/136 819/358	MEM ATL MEM	S/
Orlando, Fla.	12 00n	5 43p		4	134/225	ATL	
Panama City, Fla.	7 45a 12 00n	10 52a 3 04p	Ex Su	2 2	130/511 134/225	ATL ATL	S/
Shelbyville/Tulahoma, Tenn.	7 10a	11 54a	Ex Sa	4	813/842	MEM	S/
St. Louis, Mo.	7 10a 5 35p	9 43a 9 33p		2 3	813/234 819/350	MEM MEM	S/S
Tallahassee, Fla.	12 00n	4 45p		3	134/225	ATL	
Tupelo, Miss.	7 10a 5 35p	7 46a 6 42p		0 1	813 819		S
University/Oxford, Miss.	7 10a	10 00a	Ex Su	2	813/833	MEM	S/
Valdosta, Ga.	7 45a 7 45a 4 33p	12 51p 12 51p 9 32p	Ex Sa Su Sa Only	3 3 2	130/823 130/805 816/829	ATL ATL ATL	S/ S/

From  
**Tuscumbia, Ala.**  
 (See Florence/Sheffield/Tuscumbia, Muscle Shoals, Ala.)  
**383-4581**

From  
**University, Miss.**  
**Oxford, Miss.**  
 To  
**234-2211**  
**234-2211**

Atlanta, Ga.	11 51a 7 16p	3 34p 11 25p	Ex Su Ex Sa	3 3	830/414 836/416	MEM MEM	
Baton Rouge, La.	7 16p	10 14p	Ex Sa	3	836/353	MEM	
Birmingham, Ala.	11 51a	2 11p	Ex Su	1	830/235	MEM	
Chattanooga, Tenn.	7 16p	10 43p	Ex Sa	2	836/416	MEM	
Chicago, Ill. (Midway Airport)	7 16p	9 36p	Ex Sa	1	836/174	MEM	
Florence/Sheffield/Tuscumbia, Ala.	7 16p	9 37p	Ex Sa	1	836/846	MEM	
Greenwood, Miss.	10 10a 6 15p	10 39a 6 44p	Ex Su Ex Sa	0 0	833 837		
Hattiesburg, Miss.	10 10a 6 15p	1 26p 9 30p	Ex Su Ex Sa	4 4	833 837		

	Leave	Arrive	Freq.	Stops	Flight No.	Connect At	Meal
Huntsville/Decatur, Ala.	7 16p	9 03p	Ex Sa	1	836/416	MEM	
Jackson/Vicksburg, Miss.	10 10a 6 15p	11 19a 7 24p	Ex Su Ex Sa	1 1	833 837		
Jackson, Tenn.	11 51a 7 16p	12 55p 9 25p	Ex Su Ex Sa	1 1	830/414 836/358	MEM MEM	
Knoxville, Tenn.	7 16p	11 53p	Ex Sa	3	836/358	MEM	
Laurel, Miss.	10 10a 6 15p	12 59p 9 04p	Ex Su Ex Sa	3 3	833 837		
Memphis, Tenn.	11 51a 7 16p	12 14p 7 39p	Ex Su Ex Sa	0 0	830 836		
Meridian, Miss.	7 16p	9 55p	Ex Sa	2	836/355	MEM	
Monroe, La.	7 16p	9 28p	Ex Sa	2	836/353	MEM	
Nashville, Tenn.	11 51a 7 16p	1 35p 10 05p	Ex Su Ex Sa	2 2	830/414 836/358	MEM MEM	
Natchez, Miss.	10 10a 6 15p	12 07p 8 12p	Ex Su Ex Sa	2 2	833 837		
New Orleans, La.	10 10a 6 15p	2 16p 10 20p	Ex Su Ex Sa	5 5	833 837		
St. Louis, Mo.	7 16p	9 33p	Ex Sa	1	836/350	MEM	
Tri Cities, Tenn., Va.	7 16p	12 30a	Ex Sa	4	836/358	MEM	
Tuscaloosa, Ala.	7 16p	9 51p	Ex Sa	2	836/828	MEM	

From  
**Valdosta, Ga.**  
 To  
**242-8945**

Anderson, S.C.	5 50p	9 34p	Ex Sa	2	874/871	ATL	
Athens, Ga.	5 50p	8 54p	Ex Sa	1	874/871	ATL	
Atlanta, Ga.	7 10a 3 00p 3 00p 5 50p	8 47a 4 37p 4 37p 7 02p	Ex Sa Su Sa Su Only Sa Su Only Ex Sa	1 1 1 0	822 870 808 874		S
Columbia, S.C.	7 10a	11 09a		2	822/849	ATL	S/
Florence/Sheffield/Tuscumbia, Ala.	5 50p	9 12p	Ex Sa	2	874/249	ATL	
Golden Triangle Regional Airport, Miss.	3 00p 3 00p 5 50p	6 01p 6 01p 8 35p	Ex Sa Su Sa Su Only Ex Sa	3 3 2	870/819 808/819 874/145	ATL ATL ATL	
Greenville/Spartanburg, S.C.	5 50p	9 10p	Ex Sa	1	874/177	ATL	
Greenwood, S.C.	5 50p	10 02p	Ex Sa	3	874/871	ATL	
Huntsville/Decatur, Ala.	7 10a 3 00p 3 00p 5 50p	9 58a 4 38p 4 38p 7 30p	Ex Sa Su Sa Su Only Sa Su Only Ex Sa	2 2 2 1	822/163 870/169 808/169 874/869	ATL ATL ATL ATL	S/
Jacksonville, Fla.	1 10p	1 47p	Ex Sa Su	0	823		
Memphis, Tenn.	3 00p 3 00p 5 50p	7 24p 7 24p 8 52p	Ex Sa Su Sa Su Only Ex Sa	5 5 2	870/819 808/819 874/869	ATL ATL ATL	
Meridian, Miss.	7 10a 5 50p	11 09a 9 15p	Ex Sa	3 3	822/137 874/145	ATL ATL	S/
Mobile, Ala./Pascagoula, Miss.	7 10a 3 00p 3 00p 5 50p	10 27a 6 03p 6 03p 8 28p	Ex Sa Su Sa Su Only Sa Su Only Ex Sa	2 2 2 1	822/133 870/174 808/174 874/521	ATL ATL ATL ATL	S/
Moultrie/Thomasville, Ga.	7 10a 3 00p 3 00p	7 29a 3 19p 3 19p	Ex Sa Su Sa Su Only Sa Su Only	0 0 0	822 870 808		S
Nashville, Tenn.	3 00p 3 00p	5 20p 5 20p	Ex Sa Su Sa Su Only	3 3	870/169 808/169	ATL ATL	
Tupelo, Miss.	3 00p 3 00p	6 42p 6 42p	Ex Sa Su Sa Su Only	4 4	870/819 808/819	ATL ATL	
Tuscaloosa, Ala.	7 10a 3 00p 3 00p 5 50p	10 34a 5 23p 5 23p 8 02p	Ex Sa Su Sa Su Only Sa Su Only Ex Sa	2 2 2 1	822/137 870/819 808/819 874/145	ATL ATL ATL ATL	S/



Leave Arrive Freq. Stops Flight No. Connect At Meal

From  
**Vicksburg, Miss.**  
(See Jackson/Vicksburg, Miss.) **800-241-2521**

From  
**Washington, D.C.** (Dulles Intl Airport) **628-9032**  
To For Air Freight Call 471-4341

Albany, Ga.	9 18p	11 28p	1	719		
Columbus, Ga.	12 16p 6 28p 9 18p	1 46p 7 58p 10 48p	0 0 0	713 717 719		L D
Dothan, Ala.	12 16p 9 18p	1 25p 11 00p	1 2	713 719		L
Eglin A.F.B./Fort Walton Beach, Fla.	12 16p 9 18p	2 00p 11 35p	2 3	713 719		L
Gulfport/Biloxi, Miss.	12 16p 6 28p	2 58p 8 37p	3 2	713/517 717	VPS	L/ D
Miami, Fla.	12 16p	5 48p	5	713		L
Mobile, Ala./Pascagoula, Miss.	6 28p	8 03p	1	717		D
New Orleans, La.	12 16p 6 28p	3 35p 9 15p	4 3	713/517 717	VPS	L/ D
New York, N.Y./Newark, N.J.	9 28a 3 49p 6 39p	10 19aⓄ 4 40pⓄ 7 30pⓄ	0 0 0	710 321 716		
Orlando, Fla.	12 16p	4 53p	4	713		L
Panama City, Fla.	12 16p	3 04p	1	713/225	CSG	L/
Tallahassee, Fla.	12 16p	3 54p	3	713		L

From  
**West Point, Miss.**  
(See Golden Triangle Regional Airport, Miss.) **800-241-2521**

## Good-Time Excursion

Individuals can save 25% of round-trip regular fare on Saturday, Monday or Tuesday. You must stay at destination at least 24 hours, in addition to day of departure and return to origin within 17 days of departure. Enjoy extra vacation days by using our low excursion fares.

## Dollar Stopover Plan

Save and visit Walt Disney World. Enjoy the beautiful beaches of the Florida and Mississippi Gulf Coasts. You can save plenty if your flight on Southern goes through either Orlando, Eglin AFB (Ft. Walton Beach) or Gulfport/Biloxi. Now you can stop over in any of these cities for just one dollar more than regular fare. Good from any city on Southern's system, it can be used with any other Southern Fare Deal.

## Military Fare

Military personnel can save 25% of the regular fare and travel in reserved seats every day except Friday and Sunday. The 25% savings on Friday and Sunday is on a Stand-by basis only. Special Military Recruit Fares save 30% with U.S. Government transportation requests.

## Group 10 Fares

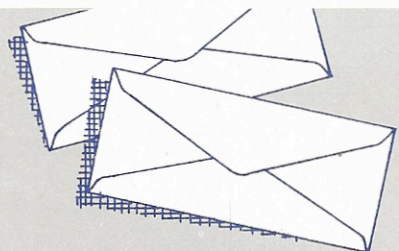
For 10 or more people flying together to the same destination, each person saves 25% on round-trip. On one-way each person saves 20%. Good anytime, between all cities on Southern's system.

## Family Plan

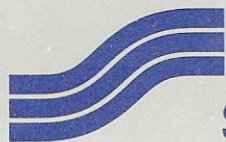
Head of family pays full fare, spouse or accompanying members of family pay approximately 90%. Children under 2 travel without charge. Age 2 to 12 pay only 2/3 fare. Fares are good anytime except from 2:00 pm to midnight on Fridays and Sundays. Family Plan expires May 31, 1974.

Call Southern or your Travel Agent and save with our Fare Deals.

(All percentages are approximate.)



**Save Time!**  
**Order Your Ticket**  
**Delivered by Mail**



**Southern**

**A Fare Deal for Everyone**



# Thru-Fares and Other Ways to Save

Between	One Way			Round Trip
	Full Fare (See Note)	Youth*	Military	Group & Excursion
<b>Albany, Ga.</b> and Baltimore, Md.	62.00			
Chicago, Ill.	65.00	60.00	49.00	98.00
Los Angeles, Calif.	151.00			
New York, N.Y.	72.00	66.00	54.00	108.00
San Francisco, Calif.	172.00			
<b>Anderson, S.C.</b> and Chicago, Ill.	55.00			
Los Angeles, Calif.	149.00			
Miami, Fla.	59.00	54.00	44.00	89.00
<b>Anniston, Ala.</b> and Detroit, Mich.	59.00			
Miami, Fla.	60.00	55.00	45.00	90.00
New York, N.Y.	73.00			
San Antonio, Tex.	75.00			
Washington, D.C.	60.00			
<b>Athens, Ga.</b> and Chicago, Ill.	55.00	51.00	41.00	83.00
New York, N.Y.	80.00			
Tampa, Fla.	49.00			
Los Angeles, Calif.	149.00			
<b>Atlanta, Ga.</b> and Eglin AFB, Fla.	36.00	33.00	27.00	54.00
Orlando, Fla.	41.00	38.00	31.00	61.00
Panama City, Fla.	36.00	33.00	27.00	54.00
<b>Baton Rouge, La.</b> and Chicago, Ill.	72.00	66.00	54.00	108.00
Detroit, Mich.	81.00			
Houston, Tex.	35.00			
New York, N.Y.	96.00	88.00	72.00	144.00
St. Louis, Mo.	56.00	52.00	42.00	84.00
<b>Birmingham, Ala.</b> and Chicago, Ill.	54.00	50.00	41.00	81.00
Dallas, Tex.	55.00			
Houston, Tex.	54.00			
Los Angeles, Calif.	133.00			
Miami, Fla.	60.00	55.00	45.00	90.00
Orlando, Fla.	46.00	42.00	34.00	69.00
St. Louis, Mo.	42.00	39.00	32.00	63.00
San Francisco, Calif.	147.00			
<b>Chattanooga, Tenn.</b> and Chicago, Ill.	48.00	44.00	36.00	72.00
Dallas, Tex.	64.00			
Jackson, Miss.	38.00	35.00	29.00	57.00
Kansas City, Mo.	64.00			
Memphis, Tenn.	30.00	28.00	23.00	45.00
St. Louis, Mo.	40.00	37.00	30.00	60.00
<b>Chicago, Ill.</b> and Gulfport/Biloxi, Miss.	71.00	65.00	53.00	106.00
Jackson, Miss.	61.00	56.00	46.00	91.00
Memphis, Tenn.	48.00	44.00	36.00	72.00
Mobile, Ala.	71.00	65.00	53.00	106.00
Montgomery, Ala.	60.00	55.00	45.00	90.00
New Orleans, La.	72.00	66.00	54.00	108.00
<b>Columbus, Ga.</b> and Dallas, Tex.	64.00			
Los Angeles, Calif.	143.00			
New York, N.Y.	72.00	66.00	54.00	108.00
Washington, D.C.	59.00	54.00	44.00	89.00

Between	One Way			Round Trip
	Full Fare (See Note)	Youth*	Military	Group & Excursion
<b>Eglin AFB, Fla.</b> and Houston, Tex.	54.00			
Los Angeles, Calif.	143.00			
New York, N.Y.	82.00	75.00	62.00	123.00
San Francisco, Calif.	158.00			
Washington, D.C.	67.00	62.00	50.00	101.00
<b>Greenville, S.C./ Spartanburg, S.C.</b> and Chicago, Ill.	55.00	51.00	41.00	83.00
Dallas, Tex.	75.00			
Los Angeles, Calif.	149.00			
<b>Gulfport/ Biloxi, Miss.</b> and Dallas, Tex.	54.00			
Denver, Colo.	99.00			
Los Angeles, Calif.	132.00			
New York, N.Y.	94.00	86.00	71.00	141.00
St. Louis, Mo.	56.00	52.00	42.00	84.00
Washington, D.C.	82.00	75.00	62.00	123.00
<b>Jackson, Tenn.</b> and Chicago, Ill.	48.00	44.00	36.00	72.00
Dallas, Tex.	55.00			
Los Angeles, Calif.	132.00			
New York, N.Y.	81.00			
St. Louis, Mo.	40.00	37.00	30.00	60.00
San Francisco, Calif.	145.00			
<b>Memphis, Tenn.</b> and Miami, Fla.	75.00	69.00	56.00	112.00
Montgomery, Ala.	40.00	37.00	30.00	60.00
New Orleans, La.	38.00	35.00	29.00	57.00
Orlando, Fla.	65.00	60.00	49.00	98.00
St. Louis, Mo.	29.00	27.00	22.00	43.00
<b>Miami, Fla.</b> and Montgomery, Ala.	55.00	51.00	41.00	83.00
Orlando, Fla.	25.00	23.00	19.00	38.00
Tallahassee, Fla.	41.00	38.00	31.00	61.00
<b>Mobile, Ala.</b> and New York, N.Y.	87.00	80.00	65.00	131.00
St. Louis, Mo.	56.00	52.00	42.00	84.00
Washington, D.C.	73.00	67.00	55.00	109.00
<b>Nashville, Tenn.</b> and Chicago, Ill.	48.00	44.00	36.00	72.00
Dallas, Tex.	57.00			
Los Angeles, Calif.	132.00			
St. Louis, Mo.	40.00	37.00	30.00	60.00
San Francisco, Calif.	145.00			
<b>Valdosta, Ga.</b> and Chicago, Ill.	73.00			
Los Angeles, Calif.	145.00			
New York, N.Y.	72.00	66.00	54.00	108.00
Washington, D.C.	59.00	54.00	44.00	89.00

### Fly All the Way and Enjoy Thru-Fare Savings

For Example: Athens to Atlanta, \$20.00; Atlanta to Chicago, \$55.00. When you buy a Thru-Fare ticket you fly from Athens to Atlanta to Chicago for only \$55.00. This same Thru-Fare is available for your return trip.

\*Youth Fare Expires May 31, 1974.

Fares are Subject to Change Without Notice. For Fares in Markets Not Listed Contact Your Travel Agent or Southern Airways, Inc.  
**NOTE:** Full Fare is Southern's Standard Class. Other Airlines' Portion of the Fare Shown is Based on Coach Fare.

Fares Include 8% Federal Tax But Not Any Applicable State Tax or Surcharges



City	Closest Southern Airport/Ticket Office	Reservations Telephone	Miles From City	Limo Fare
Albany, Ga.	Albany Dougherty County Airport	436-2418	4 SW	\$1.40
Anderson, S.C.	Anderson County Airport	226-8626	5 SW	1.50
Anniston, Ala.	Anniston Calhoun County Airport	237-6721	7 S	1.50
Athens, Ga.	Municipal Airport	548-1364	4 E	1.00
Atlanta, Ga.	Hartsfield Atlanta Intl. Airport Equitable Building	762-5561	10 SW	1.55
Baton Rouge, La.	Ryan Airport	357-1488	8 N	2.25
Biloxi, Miss.	Municipal Airport-Gullport	864-2323	12 NW	2.55
Birmingham, Ala.	Municipal Airport	252-4124	5 NE	1.50
Bristol, Tenn.-Va.	Tri-City Airport	323-4144	16 SW	3.00
Charleston, S.C.	Municipal Airport	800-241-2521	13 NW	1.65
Charlotte, N.C.	Douglas Municipal Airport	800-241-2521	6 SW	1.25
Chattanooga, Tenn.	Lovell Field	265-4536	6 E	2.00
Chicago, Ill.	Midway Airport	726-6273	12 SW	2.25
	† Conrad-Hilton Hotel-Lobby	726-6273		
	† 33 North Dearborn Street	726-6273		
	† Hancock Center	726-6273		
	† 445 North Michigan Avenue	726-6273		
	† 310 South Michigan Avenue	726-6273		
	† 35 East Monroe Street	726-6273		
	† O Hare Inn	726-6273		
	† Regency Hyatt House	726-6273		
Columbia, S.C.	Metropolitan Airport	254-5181	7 SW	2.00
Columbus, Ga.	Metropolitan Airport	324-2493	7 NE	3.00
Columbus, Miss.	Golden Triangle Regional	328-4900	9 W	...
Crossville, Tenn.	Memorial Airport	484-5022	4 W	1.50
Decatur, Ala.	Madison County Airport-Huntsville	353-2690	12 E	6.00
Dothan, Ala.	Dothan Airport	792-3126	9 NW	3.00
Eglin Air Force Base, Fla.	Southern Airways Terminal	882-5542	...	...
Florence, Ala.	Muscle Shoals Airport	383-4581	8 SE	3.00
Fort Walton Beach, Fla.	Eglin Air Force Base	243-3175	12 NE	4.00
Gadsden, Ala.	Municipal Airport	442-6370	9 SW	2.00
Greenville, Miss.	Municipal Airport	332-2612	7 NE	1.55
Greenville, S.C.	Greenville-Spartanburg Airport	242-6535	15 NE	3.00
Greenwood, Miss.	Leflore Airport	453-1623	11 E	3.00
Greenwood, S.C.	Greenwood County Airport	223-3291	7 N	2.50
Gulfport, Miss.	Municipal Airport	864-2323	4 NE	1.75
Hattiesburg, Miss.	Municipal Airport	582-1643	6 SE	4.20
Huntsville, Ala.	Madison County Airport	539-7701	12 W	...
Jackson, Miss.	Thompson Field	948-7567	10 E	3.00
Jackson, Tenn.	McKellar Field	422-5416	6 W	3.50
Jacksonville, Fla.	International Airport	757-2381	15 N	2.85
Johnson City, Tenn.	Tri-City Airport	928-9226	15 NW	3.00
Kingsport, Tenn.	Tri-City Airport	323-4144	15 SE	3.00
Knoxville, Tenn.	McGhee Tyson Airport	577-7561	13 S	3.25

City	Closest Southern Airport/Ticket Office	Reservations Telephone	Miles From City	Limo Fare
Laurel, Miss.	Municipal Airport	426-3440	4 SW	2.00
Memphis, Tenn.	International Airport	525-7681	10 S	2.25
Meridian, Miss.	Key Field	485-5165	4 W	1.90
Miami, Fla.	International Airport	379-7501	7 NW	2.00
	*Biscayne Blvd.	379-7501	...	...
Mobile, Ala.	Bates Field	342-0733	14 W	2.50
Monroe, La.	Municipal Airport	325-4601	7½ E	1.50
Montgomery, Ala.	Dannelly Field	263-3827	10 SW	1.90
Moultrie, Ga.	Moultrie/Thomasville Airport	985-4048	8 S	4.00
Muscle Shoals, Ala.	Muscle Shoals Airport	383-4581	1½ E	2.25
Nashville, Tenn.	Metropolitan Airport	242-8381	8 SE	2.00
Natchez, Miss.	Hardy Anders Airport	442-6963	10 NE	2.00
Newark, N.J.	LaGuardia Airport	800-241-9385	10 NE	...
	† 19 Commerce Street	525-0423	11 NW	3.00
New Orleans, La.	Moisant International Airport	765-4210	8 NE	2.00
New York, N.Y.	LaGuardia Airport	765-4210	...	...
	† 1335 Avenue of Americas	765-4210	...	...
	† 71 Broadway	765-4210	...	...
	† 277 Park Avenue, 27th Floor	765-4210	...	...
	† East Side Airline Terminal	765-4210	...	...
	† 595 Fifth Avenue	765-4210	...	...
	† 100 E. 42nd Street	765-4210	...	...
	† 7th Avenue & 33rd Street	765-4210	...	...
Orlando, Fla.	Orlando Jetport at McCoy	851-4310	10 SE	2.50
Oxford, Miss.	University-Oxford Airport	234-2211	2 NW	1.00
Panama City, Fla.	Bay County Airport	769-2221	5 N	A-1.75
Pascagoula, Miss.	Bates Field-Mobile, Ala.	800-241-2521	...	...
		383-4581	6 E	2.25
Sheffield, Ala.	Muscle Shoals Airport	684-5994	6 N	2.00
Shelbyville, Tenn.	Bomar Field	583-5441	16 SW	2.75
Spartanburg, S.C.	Greenville-Spartanburg Airport	621-9177	20 NW	2.65
St. Louis, Mo.	Lambert International Airport	323-2622	10 E	...
Starkville, Miss.	Golden Triangle Regional	576-1165	4 SW	1.65
Tallahassee, Fla.	Municipal Airport	226-7074	21 N	7.00
Thomasville, Ga.	Moultrie/Thomasville Airport	684-5994	21 NW	8.00
Tullahoma, Tenn.	Bomar Field-Shelbyville	842-8700	4½ W	1.50
Tupelo, Miss.	C.D. Lemons Airport	759-4466	5 NW	3.00
Tuscaloosa, Ala.	Municipal Airport	383-4581	7 NE	2.50
Tuscumbia, Ala.	Muscle Shoals Airport	234-2211	1 N	1.00
University, Miss.	University-Oxford Airport	242-8945	3 SW	1.25
Valdosta, Ga.	Municipal Airport	800-241-2521	...	...
Vicksburg, Miss.	Thompson Field-Jackson, Miss.	628-9032	26 W	3.50
		628-9032	...	...
Washington, D.C.	Dulles International Airport	800-241-2521	...	...
	1625 K Street	628-9032	...	...
West Point, Miss.	Golden Triangle Regional	800-241-2521	14 S	...

Car rentals available at all cities

\*At this location, tickets may be purchased at the Trans World Airlines Counter  
†At these locations, tickets may be purchased at the United Air Lines counter.

A - Panama City Beach  
- \$4.75 to \$9.75

### Call Southern Toll Free Service from the following states

In Alabama, Florida, Kentucky, Mississippi, North Carolina, South Carolina and Tennessee, **Dial 800-241-2521.**

In Arkansas, Connecticut, Delaware, Illinois, Indiana, Iowa, Louisiana, Maryland, Massachusetts, Michigan, Missouri, New Jersey, New York, Ohio, Oklahoma, Pennsylvania, Rhode Island, Texas, Virginia, West Virginia, and Wisconsin, **Dial 800-241-9385.**

Look for



**FlightMark  
Service**

FlightMark Service represents Southern's finest inflight fare. It refers to such culinary delights as a champagne breakfast, a wine-tasting experience, or a dinner with a choice of entrees and wine. Whatever the occasion, when FlightMark Service is indicated a unique experience awaits you.

## Security is Everyone's Concern

For your protection Federal Air Regulations require all passengers and their carry-on items be screened. Please allow extra time to accommodate this necessary security measure.



## Flight Itineraries

130:	MEI-GTR-TCL-ATL	331:	MEM-GLH-MLU-BTR-MSY	812:	MEM-TUP-GTR-ANB-ATL
131:	ATL-BHM-MOB-BSY-MEM-STL	332:	MEI-GTR-MEM	813:	TCL-TUP-MEM
133:	ATL-MOB-GPT	334:	MSY-BTR-MLU-GLH-MEM-MDW	816:	MEM-GTR-TCL-ATL
134:	MEI-TCL-ATL	339:	STL-MEM-GLH-MLU-BTR-MSY	817:	ATL-GAD-ANB-ATL
135:	ATL-BHM-TCL-GTR-MEM	340:	MSY-BTR-MLU-GLH-MEM	818:	ATL-ANB-GAD-ATL
136:	GPT-MOB-ATL-BNA	345:	MDW-MEM-JAN-MSY	819:	ATL-TCL-GTR-TUP-MEM
137:	ATL-TCL-MEI	350:	MSY-BTR-MLU-GLH-MEM-STL	820:	ATL-ANB-GAD-ATL
140:	MSY-GPT-MOB-BHM-ATL	353:	MDW-MEM-GLH-MLU-BTR-MSY	822:	VLD-MGR-ATL
142:	STL-MEM-MSY-GPT-MOB-ATL	355:	MEM-GTR-MEI	823:	ATL-CSG-MGR-VLD-JAX
145:	ATL-TCL-GTR-MEI	358:	STL-MEM-MKL-BNA-TYS-TRI	824:	GSP-GRD-AND-AHN-ATL
163:	ATL-HSV	411:	TRI-TYS-BNA-MKL-MEM	825:	ATL-AHN-AND-GRD-CLT
164:	HSV-ATL	412:	MEM-CHA-TYS-TRI	827:	ATL-VLD
168:	BNA-ATL	413:	MEM-HSV-MOB-MSY	828:	MEM-TUP-TCL
169:	ATL-HSV-BNA	414:	MDW-MEM-MKL-BNA-ATL	829:	ATL-MGR-VLD
172:	GSP-ATL	415:	TRI-TYS-CHA-MEM-STL	830:	MSY-HBG-LUL-HEZ-JAN-GWO-UOX-MEM
173:	ATL-GSP	416:	MSY-MEM-HSV-CHA-ATL	833:	MEM-UOX-GWO-JAN-HEZ-LUL-HBG-MSY
174:	GSP-ATL-MOB-GPT-MEM-MDW	417:	TRI-TYS-BNA-MKL-MEM	834:	MEM-TUP
177:	ATL-GSP	418:	BNA-TYS-TRI	835:	TUP-MEM
210:	MIA-MCO-VPS-MOB-JAN-MEM-MDW	508:	ATL-DHN-VPS-GPT-MSY-MEM-STL	836:	MSY-HBG-LUL-HEZ-JAN-GWO-UOX-MEM
211:	MDW-MEM-BHM-MGM-TLH-MCO-MIA	510:	PFN-DHN-ATL	837:	MEM-UOX-GWO-JAN-HEZ-LUL-HBG-MSY
212:	MIA-MCO-TLH-MGM-BHM-MEM	511:	ATL-VPS-PFN-ATL	841:	MSL-MEM
213:	VPS-PFN-TLH-MCO-MIA	512:	VPS-MOB-ATL	842:	MEM-MKL-BNA-SYI-CSV
215:	BNA-BHM-MCO-MIA	513:	ATL-ABY-DHN	843:	BNA-SYI
216:	MIA-MCO-TLH-PFN-CSG-ATL	514:	DHN-ABY-ATL	845:	CSV-SYI-BNA
219:	MEM-MCO-MIA	516:	MSY-VPS-DHN-ATL	846:	MEM-MSL
220:	MIA-MCO-MGM-BHM-MEM-MDW	517:	ATL-DHN-VPS-GPT-MSY	847:	SYI-BNA-MKL-MEM
222:	MIA-MCO-MEM	519:	ATL-PFN-VPS-ATL	848:	CHS-CAE-ATL
225:	ATL-CSG-PFN-TLH-MCO-MIA	520:	HSV-MEM-MSY-GPT-MOB-VPS-DHN-ATL	849:	ATL-CAE-CHS
227:	MEM-JAN-MOB-VPS-MCO-MIA	521:	ATL-MOB-VPS	852:	ABY-ATL
228:	MIA-MCO-BHM-BNA	523:	ATL-DHN-PFN	853:	ATL-CSG
229:	MEM-BHM-MGM-MCO-MIA	525:	ATL-ABY	855:	ATL-DHN
230:	MIA-MCO-TLH-PFN-VPS	526:	ABY-ATL	856:	DHN-ATL
234:	JAX-BHM-MEM-STL	616:	MSY-MOB-BHM-BNA-ATL	857:	ATL-ABY
235:	STL-MEM-BHM-JAX	617:	ATL-BNA-BHM-MOB-MSY	858:	CSG-ATL
237:	STL-MEM-BHM-JAX	710:	VPS-DHN-ABY-CSG-IAD-LGA	861:	ATL-ABY
238:	JAX-BHM-MEM-STL	713:	LGA-IAD-CSG-DHN-VPS-TLH-MCO-MIA	864:	ABY-CSG-ATL
240:	MSL-HSV-ATL	716:	MIA-MCO-TLH-VPS-DHN-CSG-IAD-LGA	869:	ATL-HSV-MEM
241:	ATL-CHA-HSV-MEM	717:	LGA-IAD-CSG-MOB-GPT-MSY	870:	JAX-VLD-MGR-ATL
242:	MSL-HSV-ATL	719:	LGA-IAD-CSG-ABY-DHN-VPS	871:	ATL-AHN-AND-GRD-GSP
244:	MSY-JAN-MEM-HSV-ATL	801:	ATL-GAD-ANB-ATL	872:	CLT-GRD-AND-AHN-ATL
245:	ATL-HSV-MSL	802:	ANB-ATL	874:	VLD-ATL
246:	MEM-HSV	803:	ATL-ANB	881:	ATL-CSG-ABY
249:	ATL-HSV-MSL	805:	ATL-CSG-MGR-VLD	883:	ATL-AHN-GSP
301:	STL-MEM	808:	VLD-MGR-ATL	884:	GSP-AHN-ATL
321:	STL-MEM-MSY-GPT-MOB-CSG-IAD-LGA	811:	ATL-GAD-ANB-ATL	886:	ABY-ATL

## Airport Codes of Cities Served by Southern

Code	City	Code	City	Code	City
ABY	Albany, Ga.	GWO	Greenwood, Miss.	MGR	Moultrie/Thomasville, Ga.
AHN	Athens, Ga.	GPT	Gulfport/Biloxi, Miss.	MIA	Miami, Fla.
ANB	Anniston, Ala.	GRD	Greenwood, S.C.	MKL	Jackson, Tenn.
AND	Anderson, S.C.	GSP	Greenville/Spartanburg, S.C.	MLU	Monroe, La.
ATL	Atlanta, Ga.	GTR	Columbus/Starkville/West Point, Miss.	MOB	Mobile, Ala.
BHM	Birmingham, Ala.	HBG	Hattiesburg, Miss.	MSL	Florence/Sheffield/Tuscumbia, Ala.
BNA	Nashville, Tenn.	HEZ	Natchez, Miss.	MSY	New Orleans, La.
BTR	Baton Rouge, La.	HSV	Huntsville/Decatur, Ala.	PFN	Panama City, Fla.
CAE	Columbia, S.C.	IAD	Washington, D.C. (Dulles Intl. Airport)	STL	St. Louis, Mo.
CHA	Chattanooga, Tenn.	JAN	Jackson/Vicksburg, Miss.	SYI	Shelbyville/Tullahoma, Tenn.
CHS	Charleston, S.C.	JAX	Jacksonville, Fla.	TCL	Tuscaloosa, Ala.
CLT	Charlotte, N.C.	LGA	New York, N.Y. (LaGuardia Airport)	TLH	Tallahassee, Fla.
CSG	Columbus, Ga.	LUL	Laurel, Miss.	TRI	Bristol/Kingsport/Johnson City, Tenn., Va.
CSV	Crossville, Tenn.	MCO	Orlando, Fla.	TUP	Tupelo, Miss.
DHN	Dothan, Ala.	MDW	Chicago, Ill. (Midway Airport)	TYS	Knoxville, Tenn.
GAD	Gadsden, Ala.	MEI	Meridian, Miss.	UOX	University/Oxford, Miss.
GLH	Greenville, Miss.	MEM	Memphis, Tenn.	VLD	Valdosta, Ga.
		MGM	Montgomery, Ala.	VPS	Eglin A.F.B./Fl. Walton Beach, Fla.





Southern Airways, Inc.  
Hartsfield Atlanta International Airport  
Atlanta, Ga. 30320

Bulk Rate  
U. S. Postage  
PAID  
Southern  
Airways, Inc.

Address Correction Requested  
Return Postage Guaranteed

