



**NORTHWEST**

*Frequent  
Flyer  
Timetable*

March 2, 1987

April 4, 1987

# CITIES SERVED BY NORTHWEST AIRLINES

CAK	Akron/Canton	MNL	Manila
ALB	Albany, NY	MEM	Memphis
ABE	Allentown	MIA	Miami
ANC	Anchorage	MKE	Milwaukee
ATW	Appleton	MSP	Minneapolis/St. Paul
ATL	Atlanta	MOT	Minot
AUS	Austin, TX	MSO	Missoula
BWI	Baltimore	MOB	Mobile/Pascagoula
BTR	Baton Rouge	MLI	Moline
BIL	Billings	MGM	Montgomery
BHM	Birmingham	YUL	Montreal, Canada
BIS	Bismarck/Mandan	BNA	Nashville
BOS	Boston	MSY	New Orleans
BZN	Bozeman	JFK	New York (Kennedy)
BUF	Buffalo/Niagara Falls	LGA	New York (LaGuardia)
CUN	Cancun	EWR	New York (Newark)
CID	Cedar Rapids	OKA	Okinawa, Ryukyo Is
CRW	Charleston, WV	OKC	Oklahoma City
CHA	Chattanooga	OMA	Omaha
ORD	Chicago (O'Hare)	SNA	Orange County
MDW	Chicago (Midway)	MCO	Orlando
CVG	Cincinnati	OSA	Osaka
CLE	Cleveland	GEN	Oslo
CMH	Columbus, OH	PFN	Panama City
CPH	Copenhagen	PIA	Peoria
DFW	Dallas/Ft. Worth	PHL	Philadelphia
DAY	Dayton	PHX	Phoenix
DEN	Denver	PIT	Pittsburgh
DSM	Des Moines	PDX	Portland
DTW	Detroit	PVD	Providence
DLH	Duluth/Superior	PVR	Puerto Vallarta
EAU	Eau Claire	RAP	Rapid City
YEG	Edmonton	RNO	Reno
ERI	Erie	RST	Rochester, MN
FAR	Fargo/Moorhead	ROC	Rochester, NY
FLL	Fort Lauderdale	SMF	Sacramento
RSW	Fort Myers	MBS	Saginaw/Bay City/Midland
VPS	Fort Walton Beach	STL	St. Louis
FWA	Fort Wayne	SLC	Salt Lake City
FRA	Frankfurt	SAN	San Diego
PIK	Glasgow (Prestwick)	SFO	San Francisco
GCM	Grand Cayman, B.W.I.	SRQ	Sarasota/Bradenton
GFK	Grand Forks	SEA	Seattle/Tacoma
GRR	Grand Rapids	SAL	Seoul
GTF	Great Falls	SHA	Shanghai
GRB	Green Bay	SNN	Shannon
GUM	Guam	SHV	Shreveport
GPT	Gulfport/Biloxi	FSD	Sioux Falls
BDL	Hartford/Springfield	SBN	South Bend
HLN	Helena	GEG	Spokane
HKG	Hong Kong	ARN	Stockholm
HNL	Honolulu	SYR	Syracuse
HOU	Houston (Hobby)	TPE	Taipei
IAH	Houston (Intercontinental)	TPA	Tampa
HSV	Huntsville/Decatur	NRT	Tokyo (Narita)
IND	Indianapolis	YYZ	Toronto, Canada
AZO	Kalamazoo	TUS	Tucson
MCI	Kansas City	TUL	Tulsa
TYS	Knoxville	IAD	Washington, D.C. (Dulles)
LSE	La Crosse	DCA	Washington, D.C. (Nat'l)
LAS	Las Vegas	CWA	Wausau/Stevens Point
LIT	Little Rock	PBI	West Palm Beach
LGW	London (Gatwick)	HPN	White Plains
LAX	Los Angeles	ICT	Wichita
SDF	Louisville, KY	YWG	Winnipeg
MSN	Madison		

FM	TO	DEP	ARR	FLT	EQP	FRQ	ST	MI	FM	TO	DEP	ARR	FLT	EQP	FRQ	ST	MI
ABE	DTW	7:10a	8:37a	625	D95			425	BHM	MEM	7:00a	7:46a	833	D95			211
	DTW	3:00p	4:32p	427	DC9			425		MEM	10:40a	11:26a	792	D95			211
	DTW	5:52p	7:10p	783	DC9	X6		425		MEM	2:10p	2:57p	996	D95			211
								677		MEM	6:00p	6:47p	1024	D95			211
								677		MEM	9:15p	9:58p	458	D95	X6		211
ABQ	LAX	8:20a	9:10a	1923	AIR	7		677	BIL	BTM	8:40a	10:18a	3842	AIR		1	191
	LAX	12:00n	12:53p	1767	AIR	X7		677		BTM	11:00a	12:38p	3844	AIR		1	191
	LAX	5:35p	6:25p	1741	AIR	6		677		BTM	3:50p	5:21p	3846	AIR	X6	1	191
								257		BTM	8:30p	9:31p	3848	AIR			126
ABR	MSP	6:15a	7:29a	3202	AIR			257		BZN	8:25a	9:10a	3830	AIR			126
	MSP	10:25a	11:40a	3272	AIR	67		257		BZN	12:55p	1:40p	3832	AIR			126
	MSP	11:19a	12:29p	3204	AIR	X67		257		BZN	3:50p	4:35p	3846	AIR	X6		126
	MSP	3:30p	4:44p	3206	AIR			257		BZN	3:55p	4:33p	1220	72S			126
	MSP	7:55p	9:00p	3208	AIR	X6		257		GDV	1:25p	2:33p	3884	AIR	X67	201	126
								489	ALB	DTW	7:05a	8:44a	189	D95			489
								489		DTW	2:40p	4:28p	885	D95			489
								489		DTW	6:35p	8:09p	1353	D95	X6		489
								166	ALO	MSP	6:25a	7:20a	2608	AIR	X7		166
								166		MSP	10:30a	11:25a	2610	AIR			166
								166		MSP	3:40p	4:35p	2612	AIR			166
								166		MSP	5:00p	5:55p	2648	AIR	X6		166
								166		MSP	7:50p	8:50p	2614	AIR	X6		166
								12846	ANC	ORD	7:00a	6:14p	76	72S		1	2846
								1448		SEA	7:00a	11:00a	76	72S			1448
								198	APN	DTW	7:20a	8:25a	2740	AIR	X7		198
								198		DTW	12:35p	1:40p	2732	AIR			198
								198		DTW	5:35p	6:40p	2783	AIR	7		198
								198		DTW	5:45p	6:50p	2783	AIR	X67		198
								342	ARN	CPH	11:50a	1:00p	31	747	7		342
								342		CPH	12:50p	2:00p	31	747	7		342
								241		GEN	12:20p	1:20p	37	747	6		241
								241		GEN	1:20p	2:20p	37	747	6		241
								13921		JFK	11:50a	4:25p	31	747	7	1	13921
								13921		JFK	12:20p	4:25p	37	747	6	1	13921
								13921		JFK	12:50p	4:25p	31	747	7	1	13921
								13921		JFK	1:20p	4:25p	37	747	6	1	13921
								24250		MSP	11:50a	8:20p	31	747	7	2	4250
								24250		MSP	12:50p	8:20p	31	747	7	2	4250
								595	ATL	DTW	7:00a	8:41a	371	DC9	X7		595
								595		DTW	10:40a	12:24p	1281	D95			595
								595		DTW	2:45p	4:26p	732	D95			595
								595		DTW	6:40p	8:24p	703	D95	X6		595
								332		MEM	7:45a	7:54a	821	D93			332
								332		MEM	11:35a	11:44a	823	D93			332
								332		MEM	2:55p	3:06p	825	D95			332
								332		MEM	6:45p	6:50p	827	DC9			332
								906		MSP	7:15a	8:49a	496	727			906
								906		MSP	12:05p	1:35p	1080	D95			906
								906		MSP	7:10p	8:37p	764	D95			906
								296	ATW	DTW	9:25a	11:38a	964	CVR			296
								296		DTW	6:15p	8:15p	615	DC9	X6		296
								296		DTW	6:15p	8:28p	615	CVR	6		296
								236		MSP	7:20a	8:27a	1190	CVR	X7		236
								236		MSP	10:25a	11:27a	961	CVR			236
								236		MSP	4:25p	5:32p	979	CVR			236
								193	ATY	MSP	6:30a	7:29a	3270	AIR	X67		193
								193		MSP	10:40a	12:29p	3204	AIR	X67	1	193
								193		MSP	10:45a	11:40a	3204	AIR	67		193
								193		MSP	2:44p	4:44p	3206	AIR		1	193
								556	AUS	MEM	10:05a	11:32a	1062	DC9			556
								556		MEM	1:30p	2:57p	864	DC9			556
								556		MEM	5:47p	7:10p	828	DC9			556
								113	AZO	DTW	7:00a	7:34a	986	CVR	X7		113
								113		DTW	7:45a	8:19a	952	72S			113
								113		DTW	10:40a	11:14a	589	D95			113
								113		DTW	2:30p	3:05p	780	DC9			113
								113		DTW	5:15p	6:00p	2823	AIR	X6		113
								113		DTW	6:35p	7:09p	808	72S			113
								113		DTW	7:35p	8:20p	2827	AIR	X6		113
								548	BDL	DTW	7:05a	8:51a	353	72S			548
								548		DTW	10:40a	12:28p	595	72S			548
								548		DTW	2:40p	4:28p	611	72S			548
								548		DTW	5:10p	6:59p	721	D95			548
								548		DTW	7:20p	9:06p	228	72S	X6		548
								1050		MSP	6:55a	8:45a	675	DC9	X7		1050
								1050		MSP	4:00p	5:50p	373	D95			1050



FM	TO	DEP	ARR	FLT	EQP	FRQ	ST	MI
BOS	MEM	915a	11 29a	381 D9S				1139
MEM	450p	704p	669 72S					1139
MSP	650a	850p	111 H80D X7					1124
MSP	900a	11 09a	103 D10					1124
MSP	1145a	145p	105 72S					1124
MSP	335p	544p	711 757					1124
MSP	705p	909p	71 D10					1124
ORD	905a	1028a	628 D9S					867
ORD	640a	814p	35 D9S					867
PIK	755p	915a	48 747 4					1 3029
		DISC. 3/26						
PIK	755p	1025a	48 747 4					1 3029
		EFF. 4/2						
BRD	MSP	650a	729a	3232 AIR X7				113
MSP	745a	829a	3254 AIR X7					113
MSP	1155a	1240p	3258 AIR					113
MSP	405p	450p	3236 AIR					113
BTL	DTW	800a	845a	2845 AIR X7				98
DTW	1045a	1130a	2847 AIR					98
DTW	240p	325p	2875 AIR					98
DTW	345p	430p	2877 AIR X6					98
DTW	625p	710p	2880 AIR X6					98
BTM	BIL	630a	758a	3841 AIR				1 191
BIL	1140a	1233p	3855 AIR					1 191
BIL	230p	358p	3845 AIR					1 191
BIL	605p	738p	3857 AIR					1 191
GEG	1030a	1044a	3842 AIR					265
GEG	535p	549p	3846 AIR X6					265
BTR	MEM	700a	759a	850 D9S				319
MEM	200p	302p	1070 DCG					319
MEM	540p	639p	283 D9S					319
BUF	DTW	755a	856a	234 72S				240
DTW	1125a	1225p	372 D9S					240
DTW	240p	423p	774 D9S					240
DTW	545p	644p	997 D9S					240
BUR	SFO	655a	805a	1901 AIR X7				326
SFO	755a	905a	1825 AIR					326
SFO	855a	1005a	1707 AIR X67					326
SFO	955a	11 07a	1715 AIR X6					326
SFO	1055a	1207p	1773 AIR X7					326
SFO	1155a	1059p	1911 AIR					326
SFO	155p	304p	1910 AIR X6					326
SFO	255p	402p	1721 AIR					326
SFO	555p	702p	1735 AIR					326
SFO	655p	804p	1927 AIR X6					326
SFO	755p	906p	1829 AIR X6					326
SFO	855p	1006p	1949 AIR					326
BWI	DTW	700a	833a	165 72S				409
DTW	1105a	1230p	693 D9S					409
DTW	310p	437p	179 72S					409
DTW	520p	647p	449 D9S					409
DTW	755p	922p	349 72S X6					409
BZN	BIL	230p	309p	3831 AIR				126
BIL	510p	544p	116 72S					126
BIL	805p	844p	3839 AIR					126
GEG	920a	1015a	3830 AIR					1 328
GEG	150p	245p	3832 AIR					1 328
GEG	450p	549p	3846 AIR X6					1 328
HLN	830p	853p	377 DCG					874
MSP	925a	1220p	499 DCG					69
MSP	155p	450p	1063 D9S 67					874
MSP	510p	859p	116 72S					1 874
CAK	DTW	750a	834a	202 D9S				134
DTW	210p	256p	981 CVR					134
DTW	555p	644p	995 CVR					134
CCR	LAX	655a	808a	1960 AIR X7				346
LAX	1010a	1119a	1862 AIR X6					346
LAX	1128a	1235p	1964 AIR 7					346
LAX	120p	229p	1864 AIR					346
LAX	625p	734p	1768 AIR X6					346
CGI	MEM	700a	753a	2442 AIR X7				152
MEM	1005a	1124a	2378 AIR					1 152
MEM	217p	310p	2444 AIR					152
MEM	546p	639p	2504 AIR X6					152
CHA	MEM	740a	734a	681 DCG				271
MEM	310p	307p	868 DCG					271
MEM	635p	629p	1199 DCG					271
CID	DTW	600a	852a	956 D9S X7				430
DTW	100p	315p	956 D9S					430
DTW	610p	822p	482 D9S					430
MLI	600a	624a	956 D9S X7					69
MLI	250p	314p	608 72S					69
MLI	1100p	1122p	1050 72S					69
MSP	750a	840a	231 72S					221

FM	TO	DEP	ARR	FLT	EQP	FRQ	ST	MI
CID	MSP	1010a	1110a	993 CVR				221
MSP	1120a	1220p	2602 AIR X7					221
MSP	320p	420p	2604 AIR X6					221
MSP	450p	540p	603 72S					221
MSP	800p	850p	1570 D9S X6					221
MSP	800p	900p	1570 CVR 6					221
CIU	DTW	635a	825a	2740 AIR X7				1 283
DTW	1150a	140p	2732 AIR					1 283
DTW	450p	640p	2783 AIR 7					1 283
DTW	500p	650p	2783 AIR X67					1 283
CLE	BOS	430p	555p	620 D9S				563
DTW	700a	739a	970 D9S X7					95
DTW	730a	810a	2231 AIR X67					95
DTW	810a	852a	435 72S					95
DTW	835a	915a	2266 AIR X67					95
DTW	900a	940a	2826 AIR X67					95
DTW	930a	1010a	2232 AIR X67					95
DTW	1000a	1040a	2711 AIR X7					95
DTW	1155a	1230p	735 D9S					95
DTW	1200a	1240p	2786 AIR					95
DTW	100p	140p	2727 AIR X6					95
DTW	200p	240p	2789 AIR X6					95
DTW	300p	340p	2704 AIR X6					95
DTW	315p	355p	2247 AIR X67					95
DTW	400p	439p	785 DCG					95
DTW	400p	440p	2791 AIR X67					95
DTW	445p	530p	2203 AIR X67					95
DTW	500p	540p	2707 AIR X6					95
DTW	600p	640p	799 D9S X6					95
DTW	600p	640p	2793 AIR					95
DTW	645p	730p	2206 AIR X67					95
DTW	700p	740p	2784 AIR X67					95
DTW	800p	840p	2796 AIR X6					95
DTW	845p	925p	257 D9S X6					95
DTW	715a	805a	881 DCG					623
MEM	200p	250p	589 D9S					623
MEM	620p	710p	652 D9S					623
MSP	750a	839a	959 D9S					622
MSP	1035a	1124a	563 D9S					622
MSP	510p	600p	1064 D9S					622
ORD	1110a	1120a	638 DCG					316
CMH	CVG	645a	727a	1057 D9S 7				116
DTW	600a	740a	328 D9S X7					156
DTW	800a	850a	1088 72S					156
DTW	1000a	1055a	2230 AIR X67					156
DTW	1030a	1130a	2781 AIR X6					156
DTW	1142a	1229p	532 DCG					156
DTW	225p	312p	768 D9S					156
DTW	340p	435p	2729 AIR					156
DTW	410p	510p	2228 AIR X67					156
DTW	740p	820p	2734 AIR X6					156
DTW	800p	820p	858 DCG X6					518
MEM	720a	754a	831 D9S X7					518
MEM	110a	1144a	1065 D9S					518
MEM	640p	710p	495 DCG					518
MSP	755a	847a	601 D9S X7					627
MSP	500p	550p	397 72T					627
CMH	DTW	615a	850a	2860 AIR X67				1 425
DTW	625a	850a	2801 AIR 6					1 425
DTW	835a	1130a	2752 AIR 7					2 425
DTW	1235p	330p	2755 AIR X7					2 425
DTW	500p	810p	2751 AIR X6					2 425
MSP	735a	830a	2750 AIR					1 277
MSP	440p	515p	2753 AIR					1 277
CPH	ARN	850a	1000a	30 747 5				342
		DISC. 3/27						
ARN	950a	1100a	30 747 5					342
		EFF. 4/3						
GEN	850a	1000a	30 747 7					323
		DISC. 3/22						
GEN	950a	11 00a	30 747 7					323
		EFF. 3/29						
JFK	215p	425p	31 747 57					3856
		DISC. 3/27						
JFK	300p	425p	31 747 7					3856
		EFF. 3/29						
JFK	315p	425p	31 747 5					3856
		EFF. 4/3						
MSP	215p	820p	31 747 57					1 4281
		DISC. 3/27						
MSP	300p	820p	31 747 7					1 4281
		EFF. 3/29						
MSP	315p	820p	31 747 5					1 4281
		EFF. 4/3						
CRW	DTW	715a	829a	1121 CVR X7				281
DTW	305p	419p	621 CVR					281
DTW	555p	709p	624 CVR					281
CUN	MEM	340p	559p	736 D9S				984
CVG	CMH	1030p	1105p	880 D9S 6				116

FM	TO	DEP	ARR	FLT	EQP	FRQ	ST	MI
CVG	DTW	645a	739a	266 DCG X7				230
DTW	1050a	1138a	1208 DCG					230
DTW	230p	318p	81 D9S					230
DTW	725p	826p	752 72S X67					230
MEM	730a	746a	492 DCG					403
MEM	1130a	1145a	492 D9S					403
MEM	305p	315p	871 DCG					403
MEM	640p	654p	781 DCG					403
MSP	755a	839a	1057 D9S					596
MSP	500p	544p	377 DCG					596
CWA	DTW	920a	1142a	980 CVR				363
DTW	610p	830p	971 CVR					363
MSP	630a	724a	32					



























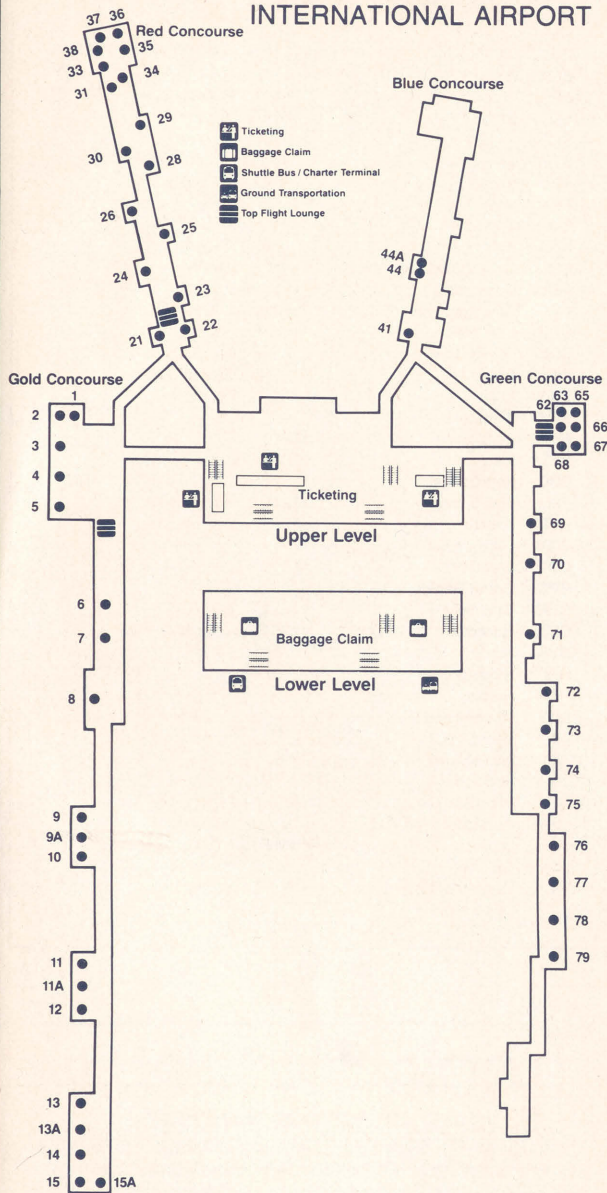
FM	TO	DEP	ARR	FLT	EQP	FREQ	ST	MI	FM	TO	DEP	ARR	FLT	EQP	FREQ	ST	MI	FM	TO	DEP	ARR	FLT	EQP	FREQ	ST	MI	FM	TO	DEP	ARR	FLT	EQP	FREQ	ST	MI
SEL	ORD	440p	155p	6	747	46		6538	SFO	SAN	845p	959p	1980	AIR			447	SNN	PIK	900a	1000a	38	747	6	262	TUP	MEM	550p	651p	846	DC9		342		
		EFF. 4/2															447																		
SEA	510p	925a	20	747	X23			5200	SEA	1235a	220a	1749	AIR	6		678	SRQ	DTW	845a	1124a	742	72S			1023	MEM	731a	805a	2500	AIR	X7		88		
SFO	500p	1250p	28	747	X367			5640	SEA	840a	1030a	1851	AIR	X67	678										1023	MEM	1049a	1119a	2404	AIR	X7		88		
TPE	830p	1000p	5	747	146			914	SEA	840a	1030a	1901	AIR	6		678	DTW	1255p	334p	538	75T			1023	MEM	235p	305p	2508	AIR			88			
		EFF. 3/30							SEA	1130a	118p	1763	AIR	6		678	DTW	350p	629p	1432	72S			1023	MEM	550p	620p	2512	AIR			88			
									SEA	440p	628p	1887	AIR	6		678	MEM	1030a	1119a	472	D95			686	MEM	855p	925p	2538	AIR	X6		88			
									SEA	730p	918p	1735	AIR	6		678	MEM	155p	249p	282	D95			686											
									SEA	945p	1230a	1931	AIR	457	1	678	MEM	600p	654p	469	D95			686											
									SEL	1210p	725p	27	747	26	1	5640	MSP	910a	1129a	700	72S			1343	TUS	LAX	1112a	1135a	1727	AIR	X6		451		
									SMF	705p	735p	643	72S		85		MSP	335p	554p	677	72S			1549	LAX	119p	142p	1725	AIR	X6		451			
									SNA	1047a	1203p	1782	AIR	X6	372		PBI	110p	147p	784	72S			1343	LAX	442p	505p	1975	AIR	X6		451			
									SNA	1200n	117p	1886	AIR	X6	372		RSW	1030p	1054p	194	72S			77	LAX	812p	835p	1941	AIR	X6		451			
									SNA	115p	230p	1774	AIR	6	372										440	MEM	1120a	257p	72	D95			1224		
									SNA	220p	334p	1888	AIR	6	372										440	MSP	820a	129p	602	72S			1298		
									SNA	335p	452p	1990	AIR	X6	372										440	MSP	1230p	429p	602	D95			1298		
									SNA	440p	557p	1806	AIR	6	372										440	SAN	1045p	1052p	795	D95			367		
									SNA	705p	822p	1790	AIR	X6	372										440										
									SNA	800p	913p	1882	AIR	6	372										440										
									SNA	1250p	1002p	1796	AIR	X6	372										440										
									YKM	800p	144p	1961	AIR	6	625										256	DTW	740a	850a	2860	AIR	X67		207		
									YKM	530p	755p	1935	AIR	6	1	625									256	DTW	740a	855a	2752	AIR	6		207		
									YKM	830p	1055p	1927	AIR	X6	1	625									256	DTW	1015a	1130a	2752	AIR	X67		207		
																									256	DTW	1020a	1130a	2752	AIR	7		207		
																									448	DTW	1020a	1135a	2860	AIR	6		207		
																									448	DTW	1100a	1215p	2242	AIR	6		207		
																									448	DTW	100p	215p	2871	AIR	6		207		
																									448	DTW	145p	300p	2241	AIR	6		207		
																									234	DTW	505p	615p	2863	AIR	6		207		
																									234	DTW	630p	745p	2245	AIR	X6		207		
																									234	DTW	710p	825p	2819	AIR	X6		207		
																									234										
																									234										
																									234										
																									234										
																									234										
																									234										
																									234										
																									234										
																									234										
																									234										
																									234										
																									234										
																									234										
																									234										
																									234										
																									234										
																									234										
																									234										
																									234										
																									234										
																									234										
																									234										
																									234										
																									234										
																									234										
																									234										
																									234										
																									234										
																									234										
																									234										
																									234										
																									234										
																									234										
																									234										
																									234										
																									234										
																									234										
																									234										
																									234										
																									234										



## ADDITIONAL CITIES SERVED BY AIRLINK

ABR	Aberdeen	LNK	Lincoln
ABQ	Albuquerque	LGB	Long Beach
ESF	Alexandria	MFD	Mansfield
APN	Alpena	MQT	Marquette
BTL	Battle Creek	MCW	Mason City
BLI	Bellingham	MFR	Medford
BJI	Bemidji	MEI	Meridian
BRD	Brainerd	MLS	Miles City
BKX	Brookings	MHE	Mitchell
BUR	Burbank	MLU	Monroe
BTM	Butte	MRY	Monterey
CGI	Cape Girardeau	MSL	Muscle Shoals
MDH	Carbondale	MKG	Muskegon
GTR	Columbus, MS	OAK	Oakland
CCR	Concord	ONT	Ontario
DVL	Devils Lake	OSH	Oshkosh
EKI	Elkhart	OWB	Owensboro
EUG	Eugene	PAH	Paducah
EVV	Evansville	PSC	Pasco
FYV	Fayetteville	PLN	Pellston
FNT	Flint	PIR	Pierre
FOD	Fort Dodge	RDM	Redmond
FSM	Fort Smith	RHI	Rhineland
FAT	Fresno	RFD	Rockford
GGW	Glasgow, MT	CIU	Sault Ste. Marie
GDV	Glendive	SJC	San Jose
GPZ	Grand Rapids, MN	SDY	Sidney
GLH	Greenville	SUX	Sioux City
CMX	Hancock	SGF	Springfield, MO
HVR	Havre	SCK	Stockton
HIB	Hibbing	TXK	Texarkana
HON	Huron	TVF	Thief River Falls
INL	International Falls	TOL	Toledo
IWD	Ironwood	TVC	Traverse City
JXN	Jackson, MI	TUP	Tupelo
JAN	Jackson, MS	ALO	Waterloo
MKL	Jackson, TN	ATY	Watertown
JMS	Jamestown, ND	ISN	Williston
JLN	Joplin	OLF	Wolf Point
LAN	Lansing	YKM	Yakima
PIB	Laurel/Hattiesburg	YNG	Youngstown
LWT	Lewistown		

## MINNEAPOLIS/ST. PAUL INTERNATIONAL AIRPORT



# Look who gives frequent flyers the world.

Earn free travel to nineteen countries on three continents with Northwest's WorldPerks.<sup>SM</sup>

## Look to us.

Equipment designated AIR Flight Numbers 1700-3899 indicates Airlink Service

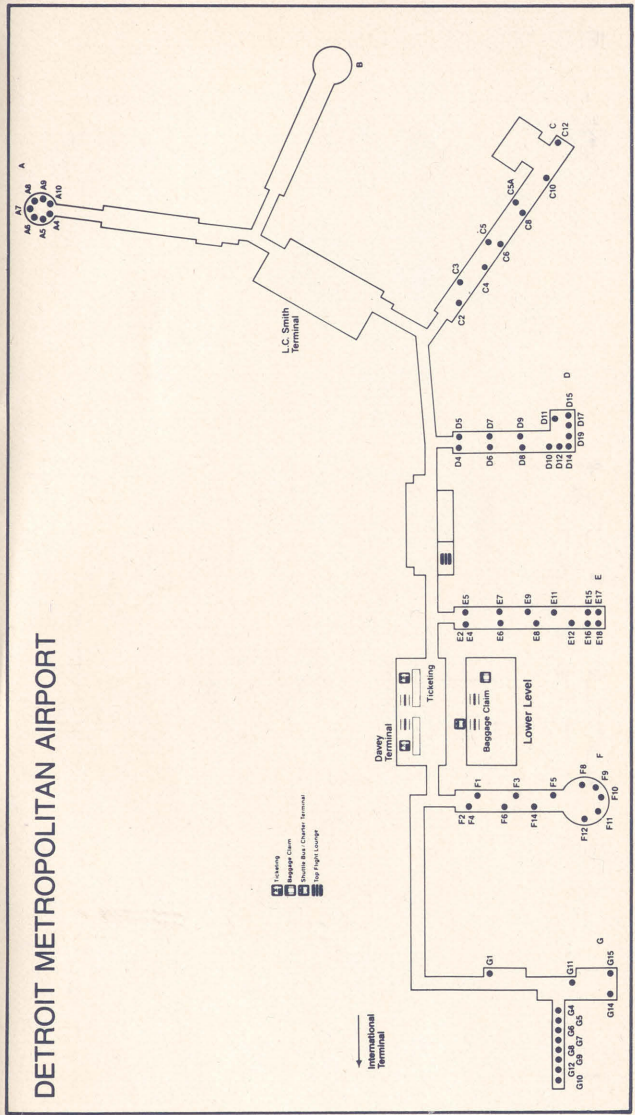
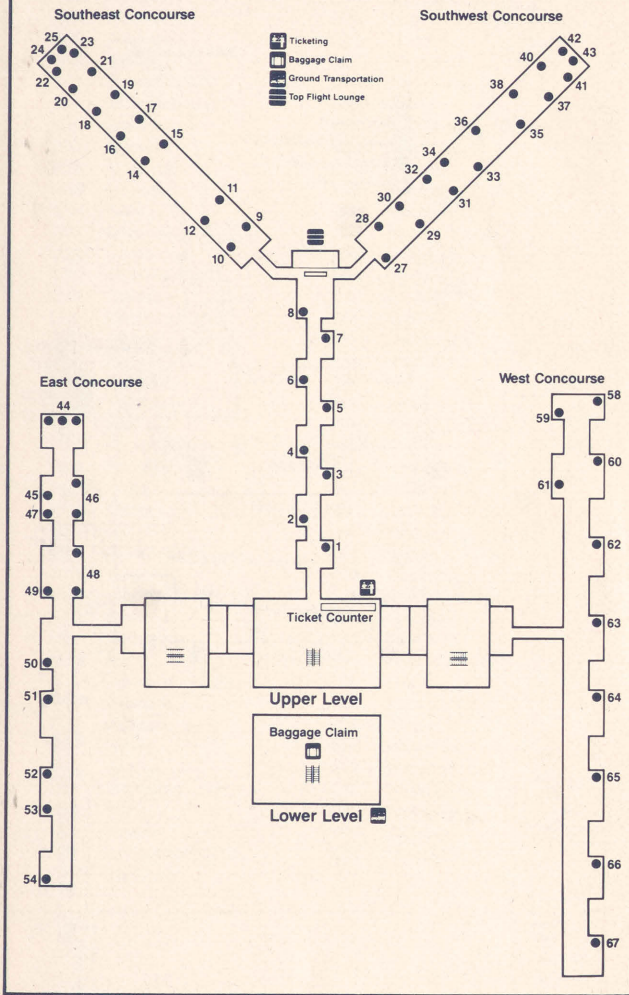
ST = Stops	X = Except	4 = Thursday
A = AM	1 = Monday	5 = Friday
P = PM	2 = Tuesday	6 = Saturday
	3 = Wednesday	7 = Sunday

Northwest Toll-Free Number: 1-800-225-2525

Schedule Subject to Change



# MEMPHIS INTERNATIONAL AIRPORT



## HOW TO USE THIS TIMETABLE

This timetable is arranged alphabetically by airport code, not by city name; on page 2 you will find the cities we serve and their airport codes. This schedule lists all nonstop Northwest and NW Airlink flights as well as selected one- and two-stop flights.

If you can't find a direct flight from your origin to your destination, it's easy to build a connection via one of our three hubs, DTW, MEM and MSP, or via our international gateways of BOS, JFK, ORD, SEA, SFO, and LAX. Follow these steps to build a connection.

- Choose a flight from origin to hub or gateway
- Note arrival time at hub or gateway
- Allow enough time to make your flight by adding the minimum connecting time to your arrival time in hub or gateway
- Find the best flight to your destination
- You may want to check another hub or gateway for a faster trip (you can get from Washington DC to Seattle via DTW, MEM or MSP)

## MINIMUM CONNECTING TIMES

NW Domestic to NW Domestic :30

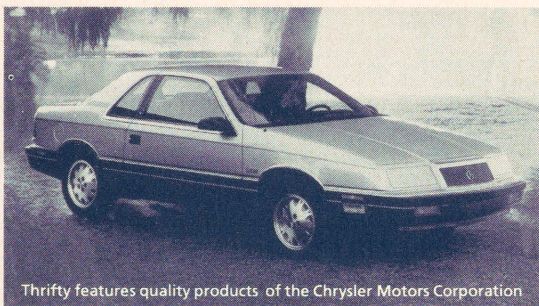
### NW Domestic to NW International

BOS	:40
DTW	:30
JFK	:40
LAX	:30
MEM	:30
MSP	:40
ORD	:30
SEA	:30
SFO	:40

### NW International to NW Domestic

BOS	1:00
DTW	1:30
JFK	1:45
LAX	1:30
MEM	1:15
MSP	1:30
ORD	1:30
SEA	1:00
SFO	1:30





Thrifty features quality products of the Chrysler Motors Corporation

# ***FLY THE COUPE. \$36.95 A DAY.***

There's a new experience coming your way in business travel. Thrifty introduces the new Chrysler LeBaron Coupe. Now until April 30, 1987, you can fly America's hottest new car for only \$36.95 a day. Only from Thrifty.



## ***1,000 WORLDPERKS MILES***

And Northwest WORLDPERKS members earn 1,000 WORLDPERKS miles when you rent the LeBaron Coupe or other fine Chrysler car from Thrifty during this promotion period.

**So Fly the Coupe!**

**FOR RESERVATIONS AND INFORMATION,  
CALL 1-800-FOR-CARS (1-800-367-2277) or  
see your travel consultant.**

***Thrifty***  
® *Car Rental*

Rate is effective through April 30, 1987 at participating Thrifty locations and does not include gas, tax, and optional PDW and PPP. A 48-hour confirmed advance reservation is required and includes 150 miles per rental day. Cars are subject to availability and must be returned to renting location. Rates \$4 a day higher at JFK, LaGuardia and Newark airports; not available in Manhattan. © Thrifty Rent-A-Car System, Inc. 1987. All rights reserved.