

LOOK TO US  NORTHWEST AIRLINES

NORTHWEST

FREQUENT
FLYER
TIMETABLE

DECEMBER 1, 1987

INCLUDES NORTHWEST'S DIRECT FLIGHTS ONLY.

Hyatt Introduces The Gold Standard Of Frequent Traveller Programs.SM

With the Hyatt Gold Passport,SM you'll finally get the very special treatment you deserve and the travel awards you expect.

Hyatt Gold Passport offers you 5 minute Express Check-In,SM exclusive members-only rooms, a Morning ExpressSM breakfast that's delivered to your room within ten minutes, or it's free. And more.

As you stay at Hyatt, you'll earn points that entitle you to Regency Club[®] and suite upgrades, free Hyatt stays, even a dream holiday at any Hyatt worldwide. All for an annual fee of \$25.00.

And now, stay at Hyatt, fly Northwest and receive a 25% bonus on Gold Passport points earned on your Hyatt stay. Earn 500 extra WORLDPERKS[®] miles, too. For your Gold Passport membership, call 1-800-54-HYATT.



HYATT  HOTELS & RESORTSSM

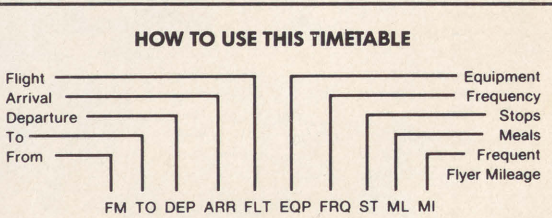
Check with Hyatt for complete terms and conditions of the Hyatt Gold Passport program.
© 1987 Hyatt Corp.

CITIES SERVED BY NORTHWEST AIRLINES *WORLDCLUB LOCATIONS

ABR	Aberdeen, SD	GDV	Glendive, MT
CAK	Akron/Canton, OH	GCM	Grand Cayman, B.W.I.
ALB	Albany, NY	GFK	Grand Forks, ND
ABQ	Albuquerque, NM	GRR	Grand Rapids, MI
ESF	Alexandria, LA	GPZ	Grand Rapids, MI
ABE	Allentown, PA	GTF	Great Falls, MT
APN	Alpena, MI	GRB	Green Bay, WI
ANC	Anchorage, AK	GLH	Greenville, MS
ATW	Appleton, WI	GUM	Guam, Mariana Is
ATL	Atlanta, GA	GPT	Gulfport/Biloxi, MS
AUS	Austin, TX	CMX	Hancock, MI
BWI	Baltimore, MD	BDL	Hartford, CT/Springfield, MA
BKK	Bangkok, Thailand	HVR	Havre, MT
BTR	Baton Rouge, LA	HLN	Helena, MT
BLI	Bellingham, WA	HIB	Hibbing, MN
BJI	Bemidji, MN	* HKG	Hong Kong
BIL	Billings, MT	* HNL	Honolulu, HI
BHM	Birmingham, AL	HOU	Houston (Hobby), TX
BIS	Bismarck/Mandan, ND	IAH	Houston (Intercontinental), TX
* BOS	Boston, MA	HSV	Huntsville/Decatur, AL
BZN	Bozeman, MT	HON	Huron, SD
BRD	Brainerd, MN	IND	Indianapolis, IN
BKX	Brookings, SD	INL	International Falls, MN
BUF	Buffalo/Niagara Falls, NY	IWD	Ironwood, MI
BUR	Burbank, CA	JXN	Jackson, MI
BTM	Butte, MT	JAN	Jackson, MS
CUN	Cancun, Mexico	MKL	Jackson, TN
CGI	Cape Girardeau, MO	JMS	Jamestown, ND
CID	Cedar Rapids, IA	JLN	Joplin, MO
CHA	Chattanooga, TN	AZO	Kalamazoo, MI
* ORD	Chicago (O'Hare), IL	MCI	Kansas City, MO
MDW	Chicago (Midway), IL	TYS	Knoxville, TN
CVG	Cincinnati, OH	LSE	La Crosse, WI
CKV	Clarksville, TN	LAN	Lansing, MI
* CLE	Cleveland, OH	LAS	Las Vegas, NV
COU	Columbia, MO	PIB	Laurel/Hattiesburg, MS
GTR	Columbus, MS	LWT	Lewistown, MT
CMH	Columbus, OH	LNK	Lincoln, NE
CCR	Concord, CA	LIT	Little Rock, AR
CPH	Copenhagen, Denmark	* LGW	London (Gatwick), England
DFW	Dallas/Ft. Worth, TX	LGB	Long Beach, CA
DAY	Dayton, OH	* LAX	Los Angeles, CA
DEN	Denver, CO	SDF	Louisville, KY
DSM	Des Moines, IA	MSN	Madison, WI
* DTW	Detroit, MI	* MNL	Manila, Philippines
DVL	Devils Lake, ND	MWA	Marion, IL
DHN	Dothan, AL	MQT	Marquette, MI
DUB	Dublin, Ireland	MCV	Mason City, IA
DLH	Duluth, MN/Superior, WI	MFR	Medford, OR
EAU	Eau Claire, WI	* MEM	Memphis, TN
YEG	Edmonton, Canada	MEI	Meridian, MS
ERI	Erie, PA	MIA	Miami, FL
EUG	Eugene, OR	MLS	Miles City, MT
EVV	Evansville, IN	MKE	Milwaukee, WI
FAR	Fargo, ND/Moorhead, MN	* MSP	Minneapolis/St. Paul, MN
FYV	Fayetteville, AR	MOT	Minot, ND
FNT	Flint, MI	MSO	Missoula, MT
FOD	Fort Dodge, IA	MHE	Mitchell, SD
FLL	Fort Lauderdale, FL	MOB	Mobile, AL/Pascagoula, MS
RSW	Fort Myers, FL	MLI	Moline, IL
FSM	Fort Smith, AR	MLU	Monroe, LA
VPS	Fort Walton Beach, FL	MBJ	Montego Bay, Jamaica
FWA	Fort Wayne, IN	MRY	Monterey, CA
FRA	Frankfurt, Germany	MGW	Montgomery, AL
FAT	Fresno, CA	YUL	Montreal, Canada
GGW	Glasgow, MT	MSL	Muscle Shoals, AL
PIK	Glasgow (Prestwick), Scotland	MKG	Muskegon, MI

cities continued on next page

BNA	Nashville, TN	* SFO	San Francisco, CA
MSY	New Orleans, LA	SJC	San Jose, CA
JFK	New York (Kennedy), NY	SRQ	Sarasota/Bradenton, FL
LGA	New York (LaGuardia), NY	CIU	Sault Ste. Marie, MI
EWR	New York (Newark), NJ	* SEA	Seattle/Tacoma, WA
OKA	Oakland, CA	* SEL	Seoul, Korea
OKA	Okinawa, Ryukyu Is	SHA	Shanghai, China
OKC	Oklahoma City, OK	SNN	Shannon, Ireland
OMA	Omaha, NE	SHV	Shreveport, LA
ONT	Ontario, CA	SDY	Sidney, MT
SNA	Orange County, CA	SUX	Sioux City, IA
MCO	Orlando, FL	FSJ	Sioux Falls, SD
* OSA	Osaka, Japan	SBN	South Bend, IN
OSH	Oshkosh, WI	GEG	Spokane, WA
GEN	Oslo, Norway	SGF	Springfield, MO
OWB	Owensboro, KY	HDN	Steamboat Springs, (Hayden), CO
PAH	Paducah, KY	ARN	Stockholm, Sweden
PFN	Panama City, FL	SCK	Stockton, CA
PSC	Pasco, WA	SYR	Syracuse, NY
PLN	Pellston, MI	* TPE	Taipei, Taiwan
PNS	Pensacola, FL	* TPA	Tampa, FL
PIA	Peoria, IL	TVF	Thief River Falls, MN
PHL	Philadelphia, PA	* NRT	Tokyo (Narita), Japan
* PHX	Phoenix, AZ	TOL	Toledo, OH
PIR	Pierre, SD	YYZ	Toronto, Canada
PIT	Pittsburgh, PA	TVC	Traverse City, MI
PDX	Portland, OR	TUS	Tucson, AZ
PVD	Providence, RI	TUL	Tulsa, OK
PVR	Puerto Vallarta, Mexico	TUP	Tupelo, MS
RAP	Rapid City, SD	IAD	Washington, D.C. (Dulles)
RDM	Redmond, OR	* DCA	Washington, D.C. (Nat'l)
RNO	Reno, NV	ALO	Waterloo, IA
RHI	Rhineland, WI	ATY	Watertown, SD
RST	Rochester, MN	CWA	Wausau/Stevens Point, WI
ROC	Rochester, NY	PBI	West Palm Beach, FL
RFD	Rockford, IL	HPN	White Plains, NY
SMF	Sacramento, CA	ICT	Wichita, KS
MBS	Saginaw/Bay City/Midland, MI	ISN	Williston, ND
STL	St. Louis, MO	YWG	Winnipeg, Canada
SLC	Salt Lake City, UT	OLM	Wolf Point, MT
SAN	San Diego, CA	YKM	Yakima, WA
		YNG	Youngstown, OH



This timetable is arranged alphabetically by airport code, not by city name. This schedule lists all nonstop Northwest and NW Airlink flights as well as selected one- and two-stop flights.

If you can't find a direct flight from your origin to your destination it's easy to build a connection via one of our three hubs, DTW, MEM and MSP or via our international gateways of BOS, JFK, ORD, SEA, SFO, and LAX. Follow these steps to build a connection.

- Choose a flight from origin to hub or gateway
- Note arrival time at hub or gateway
- Allow enough time to make your flight by adding the minimum connecting time to your arrival time in hub or gateway
- Find the best flight to your destination
- You may want to check another hub or gateway for a faster trip (you can get from Washington DC to Seattle via DTW, MEM or MSP)

FM TO DEP ARR FLT EQP FRQ ST ML MI	FM TO DEP ARR FLT EQP FRQ ST ML MI
ABE DTW 700a 828a 873 DC9 X7 S 425	BIL BZN 830a 915a 3902 AIR 67 126
DTW 700a 828a 891 D9S 7 S 425	BZN 1255p 140p 3832 AIR 126
DTW 310p 440p 427 DC9 9 126	BZN 355p 430p 775 D9S 126
DTW 550p 723p 627 D9S X6 425	BZN 400p 445p 3846 AIR X6 126
ABQ LAX 935a 1028a 1825 AIR 7 S 677	GDV 125p 233p 3884 AIR X67 201
ABR MSP 605a 719a 3202 AIR 257	GDV 535p 712p 3886 AIR 1 201
MSP 1025a 1140a 3272 AIR 67 257	GEG 1050a 1104a 1281 D9S 445
MSP 1119a 1229p 3204 AIR X67 257	GGW 100p 155p 3872 AIR X67 189
MSP 325p 441p 3206 AIR 257	GTF 600p 707p 3874 AIR 189
MSP 740p 855p 3208 AIR X6 257	GTW 655a 750a 3860 AIR X67 177
ALB DTW 650a 833a 187 DC9 S 489	GTF 815a 948a 3900 AIR 67 177
DTW 250p 433p 1231 D9S 489	GTF 445p 541p 3862 AIR X6 177
DTW 552p 735p 499 D9S X6 S 489	HLN 700a 754a 3810 AIR X67 174
ALO MSP 630a 724a 2608 AIR X7 166	HLN 815a 909a 3900 AIR 67 174
MSP 1035a 1129a 2610 AIR 166	HLN 840a 934a 3842 AIR X67 174
MSP 340p 434p 2612 AIR 166	HLN 1100a 1154a 3844 AIR 174
MSP 500p 554p 2688 AIR X6 166	HLN 350p 444p 3850 AIR X6 174
MSP 755p 848p 2614 AIR X6 166	HLN 410p 504p 3812 AIR X6 174
ANC SEA 640a 1055a 63 72CS B 1448	HLN 650p 744p 3852 AIR X6 174
APN DTW 725a 835a 2740 AIR X7 198	HLN 825p 1002p 3848 AIR 1 174
DTW 110p 220p 2732 AIR X6 198	HVR 715a 848a 3890 AIR X7 1 198
ARN CPH 900a 1010a 31 D10 X126 342	HVR 205p 338p 3892 AIR X6 1 198
EFF. 12/18	ISN 1120a 157p 3804 AIR X6 1 284
CPH 900a 1010a 31 D10 457 342	ISN 855p 1132p 3806 AIR 1 284
DISC. 12/17	LWT 715a 757a 3890 AIR X7 97
JFK 900a 300p 31 D10 X126 1 D 3921	LWT 205p 247p 3892 AIR X6 97
EFF. 12/18	MLS 125p 310p 3884 AIR X67 1 135
JFK 900a 300p 31 D10 457 1 D 3921	MLS 535p 625p 3886 AIR 135
DISC. 12/17	MSO 830a 1017a 3830 AIR X67 1 276
MEM 900a 725p 31 D10 X126 2 D 4736	MSO 1255p 242p 3832 AIR 1 276
EFF. 12/18	MSO 435p 557p 3864 AIR 276
MEM 900a 725p 31 D10 457 2 D 4736	MSO 650p 845p 3852 AIR X6 1 276
DISC. 12/17	MSP 925a 1215p 223 72S 748
ATL DTW 655a 838a 490 DC9 X7 B 595	MSP 107p 352p 1278 D9S S 748
DTW 1035a 1219p 492 D9S 595	MSP 620p 905p 1054 D9S S 748
DTW 245p 432p 494 D9S 595	OLF 100p 232p 3872 AIR X67 1 212
DTW 515p 706p 496 D9S X6 S 595	OLF 600p 740p 3874 AIR 1 212
MEM 735a 747a 821 DC9 S 332	SDY 1120a 1224p 3848 AIR X6 245
MEM 1128a 1138a 823 D9S 332	SDY 855p 959p 3806 AIR 245
MEM 300p 310p 825 D9S S 332	BIS ISN 815a 708a 3803 AIR X67 166
MEM 640p 657p 827 D9S 332	ISN 435p 528p 3807 AIR X6 166
MSP 715a 845a 760 72S B 906	MOT 138p 206p 745 D9S 105
MSP 1200m 127p 762 D9S L 906	MSP 610a 720a 502 72S S 386
MSP 705p 839p 764 D9S S 906	MSP 1115a 1225p 682 D9S 386
ATW CWA 1115p 1138p 618 CVR X6 67	MSP 340p 450p 416 D9S 386
DTW 916a 1130a 1400 CVR 296	MSP 415a 525p 518 D9S X6 386
DTW 610p 825p 1456 CVR X6 296	SDY 615a 641a 3803 AIR X67 1 174
MSP 720a 825a 1401 CVR X7 236	SDY 435p 506p 3807 AIR X6 1 174
MSP 1020a 1128a 1440 CVR 236	BJI MSP 600a 719a 3232 AIR X7 1 199
MSP 345p 459p 1407 CVR 236	MSP 1200m 1255p 3234 AIR 199
ATY MSP 623a 723a 3270 AIR X67 1 193	MSP 320p 445p 3236 AIR 1 199
MSP 1037a 1229p 3204 AIR X67 1 193	MSP 650p 745p 3238 AIR X6 199
MSP 1045a 1140a 3204 AIR 67 193	BKK MEM 815a 630p 28 747 X367 2 D 8974
MSP 228p 441p 3206 AIR 1 193	NRT 815a 335p 28 747 X367 L 2887
AUS MEM 1000a 1124a 880 DC9 556	SFO 815a 945a 28 747 X367 1 D 7925
MEM 115p 243p 1018 DC9 556	BKK MSP 630a 724a 3210 AIR X7 182
MEM 545p 715p 883 DC9 X6 S 556	MSP 433p 528p 3212 AIR X67 182
AZO DTW 635a 725a 2824 AIR X7 113	MSP 433p 528p 3214 AIR 7 182
DTW 730a 813a 219 D9S X7 113	BLI SEA 740a 814a 1800 AIR X7 94
DTW 1052a 1130a 626 DC9 113	SEA 1206p 1240p 1802 AIR 94
DTW 220p 258p 954 DC9 113	SEA 256p 328p 1892 AIR 94
DTW 530p 620p 2823 AIR X6 113	BNA DTW 845a 1110a 312 D9S S 457
DTW 745p 820p 705 DC9 X6 613	DTW 1000a 1225p 953 DC9 457
LAN 345p 408p 1030 DC9 626	DTW 215p 440p 1044 DC9 457
LAN 825p 847p 1032 DC9 626	DTW 545p 810p 975 72S X6 S 457
MSP 820a 842p 675 DC9 426	MEM 710a 802a 981 72S 200
MSP 535p 559p 1031 DC9 426	MEM 1050a 1142a 897 D9S 200
BDL DTW 700a 849a 253 D9S S 548	MEM 210p 309p 1002 D9S 200
DTW 1025a 1215p 1059 D9S 548	MEM 620p 715p 1074 D9S 200
DTW 230p 420p 559 72S 548	MEM 905p 951p 430 D9S X6 200
DTW 505p 658p 250 D9S S 548	BOS OLE 245p 439p 1199 72S X25 583
DTW 645p 831p 595 D9S X6 548	DCA 330p 425p 1851 72S 583
MSP 640a 833a 601 D9S X7 B 1050	DTW 635a 848a 579 757 B 632
MSP 410p 603p 279 D9S S 1050	DTW 830a 1035a 383 D9S X7 B 632
BHM MEM 700a 750a 970 D9S 211	DTW 1010a 1215p 385 72S 632
MEM 1030a 1120a 852 D9S 211	DTW 220p 430p 49 D10 S 632
MEM 205p 255p 809 D9S 211	DTW 500p 707p 753 D10 S 632
MEM 550p 645p 486 D9S 211	DTW 755p 1002p 395 D9S X6 632
MEM 920p 1006p 478 D9S X6 211	FRA 810p 905a 46 D10 36 D 3670
BIL BTM 830a 956a 3902 AIR 67 1 191	FRA 920p 1225p 34 D10 7 1 D 3670
BTM 840a 1018a 3842 AIR X67 1 191	JFK 330p 435p 35 D10 X47 187
BTM 1100a 1238p 3844 AIR 1 191	JFK 330p 435p 47 D10 47 187
BTM 400p 531p 3846 AIR X6 1 191	LGW 800p 710a 48 D10 D 3283
BTM 825p 928p 3848 AIR 191	MEM 900a 115a 685 D9S B 1139
BZN 830a 915a 3830 AIR X67 126	MEM 450p 705p 1649 72S S 1139
	MNL 388a 935p 3 747 X57 2 D 8438
	MNL 838a 1035p 3 747 5 2 D 8438
	MSP 640a 850a 721 72S X7 B 1124
	MSP 905a 115a 723 72S B 1124
	MSP 1130p 135p 305 72S X7 L 1124
	MSP 1130a 135p 319 72S 7 L 1124
	MSP 345p 550p 1643 D10 S 1124
	MSP 700p 905p 729 757 D 1124
	NRT 838a 350p 3 747 1 D 6702
	OKA 838a 855p 3 747 7 2 D 7566
	ORD 838a 1020a 3 D9S S 867

FM	TO	DEP	ARR	FLT	EQP	FRQ	ST	ML	MI
MEM	MEM	1030a	1130a	2482	AIR				200
MEM	MEM	155p	255p	2484	AIR				200
MEM	MEM	535p	635p	2486	AIR	X6			200
MEM	ARN	1240p	740a	30	D10	346	1	D	4736
ARN	1240p	740a	30	D10	X157	1	D		4736
ATL	845a	1057a	820	D9S					332
ATL	1221p	221p	822	D8S					332
ATL	405p	620p	824	D8S					332
ATL	805p	1020p	826	DC9					332
AUS	810a	1050a	1071	DC9	X7				556
AUS	335p	515p	793	DC9					556
AUS	810p	951p	979	DC9					556
BHM	805a	955a	217	D9S					211
BHM	1240p	128p	1072	D9S					211
BHM	420p	510p	1002	D8S					211
BHM	800p	847p	699	D9S					211
BHM	1050a	1137p	299	D9S	X6				211
BKK	900a	1055p	27	747	XK47	2	D		8974
BNA	81a	93a	1053	DC9					200
BNA	1240p	131a	944	DC9					200
BNA	410p	500p	975	72S					200
BNA	745p	834p	1649	72S					200
BNA	1058p	1147p	459	D9S	X6				200
BOS	1230p	140p	942	72S					L 1139
BOS	340p	718p	1648	72S					S 1139
BTR	845a	952a	99p	DC9	X367				319
BTR	1220p	125p	873	DC9					319
BTR	405p	518p	816	DC9					319
BTR	820p	929p	628	DC9					319
BWI	1245p	333p	1183	DC9					S 787
BWI	755p	1048p	1176	DC9	X6				S 787
CGI	900a	951a	2357	AIR	X7				152
CGI	1230p	205p	2359	AIR					152
CGI	410p	542p	2361	AIR	X6				152
CGI	755p	847p	2363	AIR	X6				152
CHA	1235p	230p	1004	DC9					271
CHA	815p	613p	875	DC9					271
CHA	825p	1025p	1176	DC9					271
CKV	81a	1006a	2377	AIR	X7				180
CKV	1220p	139p	2379	AIR					180
CKV	355p	515p	2381	AIR					180
CKV	805p	922p	2383	AIR	X6				180
CLE	340p	621p	884	D9S					623
CLE	815p	1058p	848	D9S					623
CMH	841a	1108a	864	D9S	X7				S 518
CMH	425p	650p	1146	DC9					S 518
CMH	750p	1108p	836	D9S					518
COU	850a	1013a	2541	AIR	X7				288
COU	1220p	144p	2543	AIR					288
COU	400p	524p	2545	AIR					288
COU	755p	918p	2547	AIR	X6				288
CPH	1240p	1010a	30	D10	23	2	D		4717
CPH	1240p	1010a	30	D10	3	2	D		4717
CUN	1245p	310p	453	D9S	X34				S 984
CVG	841a	1055a	247	D9S					S 403
CVG	350p	603p	696	DC9					403
CVG	750p	1005p	836	D9S					403
DCA	855a	1145a	834	D9S					S 762
DCA	1225p	317p	852	D9S					L 762
DCA	350p	644p	854	72S					762
DCA	755p	1048p	856	800					762
DEN	1225p	153p	803	DC9					L 880
DEN	350p	523p	805	D9S					880
DFW	835a	1005a	831	D9S					B 431
DFW	400p	534p	998	800					431
DFW	800p	929p	837	DC9					431
DFW	1050p	1210a	839	D9S	X6				431
DHN	915a	1107a	2327	AIR	X7				367
DHN	340p	525p	2331	AIR					367
DHN	815p	957p	2333	AIR	X6				367
DSM	1245p	212p	952	DC9					460
DSM	745a	1127a	1187	DC9					S 490
DTW	845a	912p	290	757					610
DTW	1230p	312p	292	757					610
DTW	415p	655p	294	757					610
DTW	820p	1100p	296	800					610
DTW	820p	1100p	1296	DC9					610
DTW	1040p	115a	298	DC9	X6				610
ESF	851a	1010a	2503	AIR	X7				285
ESF	1221p	140p	2505	AIR					285
ESF	400p	520p	2507	AIR					285
ESF	810p	931p	2509	AIR					285
EVV	905a	1017a	2413	AIR	X7				247
EVV	1235p	149p	2415	AIR					247
EVV	405p	515p	2417	AIR					247
EVV	800p	910p	2419	AIR	X6				247
EVV	815p	927p	2419	AIR					247
EWR	900a	1255p	790	DC9					B 946
EWR	1240p	359p	832	D9S					S 946
EWR	755p	1110p	794	DC9					946
FLI	1220p	419p	908	D9S					1 S 851
FLI	810p	1115p	1074	D9S					851
FSM	905a	1018a	2315	AIR	X7				249
FSM	1230p	143p	2317	AIR					249
FSM	350p	503p	2319	AIR					249
FSM	810p	921p	2321	AIR					249
FYV	855a	1010a	2469	AIR					245
FYV	1225p	140p	2471	AIR					245
FYV	350p	504p	2473	AIR					245

FM	TO	DEP	ARR	FLT	EQP	FRQ	ST	ML	MI
MEM	FYV	805p	919p	2475	AIR	X6			245
GCM	845a	225p	862	D9S					1 B 1206
GCM	410p	803p	475	D9S					S 1206
GCM	410p	945p	897	72S					1 S 1206
GLH	920a	1005a	2445	AIR	X7				122
GLH	1250p	135p	2447	AIR					122
GLH	420p	505p	2449	AIR					122
GLH	820p	905p	2451	AIR	X6				122
GLH	825p	910p	2303	AIR	6				122
GPT	905a	1009a	890	D9S					324
GPT	1230p	134p	897	D9S					324
GPT	350p	457p	885	D9S					324
GPT	805p	912p	885	D9S					324
GRR	415p	659p	528	D9S					581
GRR	750p	1023p	564	D9S					581
GTR	555a	645a	2457	AIR	X7				136
GTR	910a	1002a	2459	AIR	X7				136
GTR	1250p	142p	2461	AIR					136
GTR	355p	504p	2463	AIR					136
GTR	810p	902p	2465	AIR					136
HOU	835a	1010a	483	D9S					S 484
HOU	340p	520p	809	D9S					484
HOU	800p	936p	1257	D9S					484
HOU	1055p	1255a	836	D9S	X6				484
HSV	905a	952a	880	D9S	X7				184
HSV	1245p	130p	488	D9S					184
HSV	420p	508p	892	D9S					184
HSV	800p	847p	278	D9S					184
HSV	1050p	1139p	96p	D9S	X6				184
IAD	1250p	335p	556	D9S					L 742
IAD	415p	700p	487	D9S					L 742
IAD	755p	1053p	883	DC9					742
IAH	835a	1010a	821	DC9	X7				B 469
IAH	355p	530p	955	D9S					469
IAH	800p	930p	955	D9S					469
ICT	841a	1003a	961	D9S					452
ICT	1215p	140p	807	D9S					452
ICT	350p	517p	819	DC9					452
ICT	810p	935p	1073	D9S					452
IND	415a	1055a	68p	D9S	X7				381
IND	1215p	225p	963	72S					S 381
IND	400p	613p	893	D9S					S 381
IND	755p	1008p	1065	D9S					381
JAN	805a	945a	1180	DC9					189
JAN	1240p	135p	1171	DC9					189
JAN	405p	500p	1176	DC9					189
JAN	800p	855p	1186	DC9					189
JFK	1240p	405p	30	DC9					L 964
JLN	855a	1020a	2523	AIR	X7				S 291
JLN	1225p	149p	2525	AIR					291
JLN	400p	525p	2527	AIR					291
JLN	800p	924p	2529	AIR	X6				291
LAS	905a	1035a	981	72S					L 1416
LAS	905p	933p	983	72S					B 1416
LAX	855a	1055a	551	757					B 1619
LAX	1235p	237p	553	72S					L 1619
LAX	350p	552p	555	72S					L 1619
LAX	810p	1015p	557	D9S					L 1619
LGA	915a	1232p	630	72S					B 963
LGA	1235p	352p	632	72S					L 963
LGA	355p	710p	634	72S					963
LGA	820p	1135p	642	727					963
LIT	905a	947a	971	72S	X7				130
LIT	1250p	132p	801	72S					130
LIT	415p	502p	802	727					130
LIT	745p	827p	877	D9S					130
LIT	1050p	1132p	948	72S					130
MBJ	410p	927p	958a						1 S 1359
MCI	841a	958a	960	D9S					S 393
MCI	1215p	132p	1071	D9S					393
MCI	350p	512p	1040	72S					393
MCI	745p	905p	950	72S					393
MCO	900a	1144a	886	D9S					S 683
MCO	1235p	318p	973	D9S					

FM	TO	DEP	ARR	FLT	EQP	FRQ	ST	ML	MI	FM	TO	DEP	ARR	FLT	EQP	FRQ	ST	ML	MI	FM	TO	DEP	ARR	FLT	EQP	FRQ	ST	ML	MI	FM	TO	DEP	ARR	FLT	EQP	FRQ	ST	ML	MI			
MNL	OKA	850a	1200n		28	747	3		911	MSP	BRD	700p	745p	3259	AIR				113	MSP	ENF	105p	840a	36	D10	57	1	D	4041	MSP	MKE	545p	653p	656	D10		297					
ORD	840a	125p	4	747	5	2	D	8129	113	BRD	900p	1025p	3259	AIR				113	284	MKE	845p	1045p	59S	D9S						284	MKE	845p	1045p	59S	D9S		297					
ORD	1000a	125p	4	747	X5	1	D	8129		BUF	120p	410p	896	DC9				734	284	MLI	820a	938a	141	CVR	X7				284	MLI	820a	938a	141	CVR	X7	274						
ORD	1040a	543p	20	747	146	2	D	8129		BWI	120p	430p	555	DC9			S	936	284	MLI	110p	28p	386	CVR	X7				284	MLI	110p	28p	386	CVR	X7	274						
SEA	1040a	850a	20	747	146	1	D	6661		BWI	535p	847p	594	DC9				836	284	MLI	605p	705p	564	DC9	X6				284	MLI	605p	705p	564	DC9	X6	274						
SEL	1040a	310p	20	747	146	1	L	1626		BZN	225p	430p	775	D9S			1	876	284	MLI	605p	723p	564	CVR	X6				284	MLI	605p	723p	564	CVR	X6	274						
SFO	850a	945a	28	747	3	2	D	6987		BZN	705p	828p	629	DC9			S	874	284	MOT	920a	1042a	577	DC9						284	MOT	920a	1042a	577	DC9		449					
										CID	820a	928a	2601	AIR	X7				874	161	MOT	1200n	206p	745	D9S						161	MOT	1200n	206p	745	D9S		449				
										CID	945a	1055a	2601	AIR	X7				221	161	MOT	640p	800p	39S	D9S						161	MOT	640p	800p	39S	D9S		449				
										CID	1210p	1200p	2603	AIR	X6				221	252	MOT	930a	115p	2751	AIR	X6					252	MOT	930a	115p	2751	AIR	X6	2	296			
										CID	130p	225p	2603	AIR	X6				221	252	MOT	145p	84p	2751	AIR	X6					252	MOT	145p	84p	2751	AIR	X6	2	296			
										CID	230p	340p	2687	AIR	X6				221	252	MOT	545p	910p	2756	AIR	X6					252	MOT	545p	910p	2756	AIR	X6	1	296			
										CID	550p	647p	678	DC9				221	252	MSN	755a	847a	372	72S						252	MSN	755a	847a	372	72S		1	228				
										CLE	810a	1050a	674	DC9	X7				B	622	408	MSN	125p	215p	562	72S					408	MSN	125p	215p	562	72S		228				
										CLE	120p	402p	782	D9S					B	622	408	MSN	535p	625p	416	D9S					408	MSN	535p	625p	416	D9S		228				
										CLE	550p	835p	194	72S					S	622	408	MSN	950p	1042p	624	72S					408	MSN	950p	1042p	624	72S		228				
										CMH	115p	355p	682	D9S					S	622	408	MSO	925a	1151a	707	D9S					408	MSO	925a	1151a	707	D9S		1	1013			
										CMH	550p	830p	548	72S					S	627	756	NRT	845p	916p	709	72S					756	NRT	845p	916p	709	72S		1	1013			
										CMX	930a	1230p	2751	AIR	6			1	277	756	NRT	920a	255p	7	747	X17					756	NRT	920a	255p	7	747	X17		1	D	5950	
										CMX	145p	440p	2751	AIR	X6				1	277	756	OKA	940a	355p	7	747	X17					756	OKA	940a	355p	7	747	X17		1	D	5950
										CMX	545p	820p	2751	AIR	X6				1	277	756	OKA	920a	755p	7	747	X17					756	OKA	920a	755p	7	747	X17		1	D	5950
										CUN	935a	310p	453	757	X34	1	S	1683		HIB	805a	925a	2573	AIR	X7					174	OKA	940a	1010p	7	747	3	D	6905				
										CVG	125p	405p	506	DC9				S	596		HIB	120p	216p	2619	AIR	X7					174	OMA	800a	930a	3294	AIR	X7		282			
										CVG	550p	830p	379	D9S			S	596		HIB	555p	650p	2577	AIR	X6					174	OMA	935a	1037a	43S	D9S			282				
										CWA	755a	845a	1430	CVR	X7				175		HIB	555p	751p	2621	AIR	X6					174	OMA	220p	320p	509	72S			282			
										CWA	935a	1035a	3262	AIR	X7				175		HIB	655p	751p	2681	AIR	X6					174	OMA	635p	733p	715	D9S			282			
										CWA	109p	204p	3264	AIR				175		HIB	955p	1050p	2623	AIR	X6					174	OMA	935p	1035p	689	72S			282				
										CWA	225p	316p	3434	CVR				175		HNL	925a	355p	61	D10	1	L	3972			174	ORD	700a	809a	120	72S	X7		B	334			
										CWA	535p	625p	1436	CVR				175		HON	121p	303p	3211	AIR	X6					174	ORD	800a	905a	122	747			B	334			
										CWA	640p	735p	1436	CVR	X6			175		HON	121p	303p	3211	AIR	X6					174	ORD	900a	1015a	124	727	X7		B	334			
										CWA	950p	1138p	618	CVR	X6			175		IOD	120p	432p	1052	D9S					908	ORD	1000a	1108a	126	72S			B	334				
										DAY	115p	353p	396	D9S				S	574		IND	535p	847p	568	D9S					D	908	ORD	1100a	1208p	128	72S	X7		S	334		
										DAY	600p	838p	714	D9S				S	574		IND	1020n	111p	130	D9S					S	503	ORD	1200n	111p	130	D9S			S	334		
										DCA	755a	1107a	84	757				B	931		IND	540p	807p	1218	72S					S	503	ORD	100p	215p	100	757			S	334		
										DCA	1145a	255p	316	757				B	931		IND	940p	1205a	566	D9S					S	503	ORD	200p	310p	132	727	X6		S	334		
										DCA	110p	424p	318	757				S	931		INL	925a	1101a	2617	AIR	X7				1	254	ORD	300p	407p	134	727	X6		S	334		
										DCA	150p	500p	1650	72S				S	931		INL	120p	257p	2619	AIR	X6				1	254	ORD	400p	510p	136	727	X6		S	334		
										DCA	540p	855p	322	757			D	931		INL	355p	73p	2677	AIR	X6					1	254	ORD	500p	615p	138	D9S			S	334		
										DCA	655p	945p	322	757			S	931		INL	555p	833p	2681	AIR	X6					1	254	ORD	600p	710p	140	D9S			S	334		
										DEN	915a	1013a	561	727			S	893		INL	955p	111p	2579	AIR	X6					1	254	ORD	635p	747p	479	DC9	X6		S	334		
										DEN	1205p	100p	563	M80			L	693		INL	955p	111p	2579	AIR	X6					1	254	ORD	935p	1044p	146	D9S	X6		S	334		
										DEN	220p	315p	565	DC9			L	693		INL	955p	111p	2579	AIR	X6					1	254	ORD	935p	1044p	146	D9S	X6		S	334		
										DEN	655p	748p	1645	72S			B	693		INL	145p	255p	2751	AIR	X6					S	1028	ORD	920a	920a	645p	7	747	7	D	6161		
										DFW	805a	1021a	401	D9S	X7		B	852		INL	145p	255p	2751	AIR	X6				S	1028	ORD	940a	645p	7	747	236	2	D	6161			
										DFW	130p	350p	129	D9S			B	852		JMS	1204p	128p	3243	AIR	X6					1	299	OSH	945a	1108a	2557	AIR	X6		S	239		
										DFW	235p	450p	405	D9S			B	852		JMS	1204p	128p	3243	AIR	X6					1	299	OSH	120p	241p	2559	AIR	X6		S	239		
										DFW	650p	910p	407	72S		D	852		LAN	105p	405p	1030	DC9						1	455	OSH	200p	321p	2559	AIR	X6		S	239			
										DLH	805a	851a	2573	AIR	X7		B	144		LAN	105p	405p	1030	DC9						1	455	OSH	200p	321p	2559	AIR	X6		S	239		

FM	TO	DEP	ARR	FLT	EQP	FRQ	ST	ML	MI	FM	TO	DEP	ARR	FLT	EQP	FRQ	ST	ML	MI	FM	TO	DEP	ARR	FLT	EQP	FRQ	ST	ML	MI	FM	TO	DEP	ARR	FLT	EQP	FRQ	ST	ML	MI
MSP	SLC	650p	828p	677	72Z			D	991	ORD	BOS	300p	613p	4	757			S	867	PHX	DTW	945a	327p	252	M80			B	1671	RST	MSP	100p	130p	565	DC9				76
SMF	925a	1105a	387	D9S	B	1518				BOS	655p	1005p	138	D9S	X6			S	874	L	1671	MSP	400p	434p	3291	AIR	X6		76	MSP	540p	610p	756	72Z					76
SNF	645p	825p	399	D9S	D	1518				DTW	700a	910a	160	D9S	X7			S	235	L	1674	MSP	540p	610p	756	72Z			76										
SNA	920a	1100a	111	M80	B	1522				DTW	745a	953a	162	D9S	X7			S	235	D	1264	MSP	654p	730p	3285	AIR	X6		76										
SNA	655p	833p	117	M80	X6	D	1522			DTW	900a	1108a	120	72Z				S	235	D	1264	MSP	800p	830p	384	D9S	X6		76										
STL	755a	925a	591	D9S	X7	S	448			DTW	1100a	102p	470	D9S				S	235	D	1276	MSP	100p	130p	565	DC9			76										
STL	105p	235p	593	D9S						DTW	145p	350p	130	D9S				S	235	D	1276	MSP	1240p	437p	1640	757			76										
STL	530p	702p	602	D9S						DTW	310p	518p	176	D9S				S	235	D	1276	MSP	210p	603p	1023	72S	X6		76										
STL	940p	1105p	867	D9S						DTW	455p	703p	178	D9S	X6			S	235	D	1276	MSP	510p	903p	250	M7S			76										
SUX	940a	1053a	2581	AIR	X7					DTW	600p	810p	136	72Z				S	235	D	1276	SNA	1038p	1038p	257	M80	X6		76										
SUX	125p	236p	2933	AIR	X7					DTW	820p	1039p	182	D9S	X6			S	235																				
SUX	545p	675p	2935	AIR	X7					GCM	136p	890p	475	72S				S	1609																				
SUX	700p	843p	2843	AIR	X6					MEM	635a	810a	471	D9S				S	491																				
SUX	950p	1059p	2587	AIR	X6					MEM	950a	1128a	473	72S				S	491																				
TPA	110p	507p	360	72S						MEM	138p	310p	475	72S				S	491																				
TPA	535p	1039p	718	72S						MEM	530p	710p	477	757				S	491																				
TUS	940a	1155a	601	D9S	B	1298				MEM	830p	1002p	479	DC9	X6			S	491																				
TVF	924a	1059a	3233	AIR	X6					MNL	1150a	935p	3	747	X57			D	8129																				
TVF	815p	925p	3239	AIR	X6					MNL	1150a	1035p	3	747	5			D	8129																				
YEG	705p	855p	1023	72S						MNL	1150a	1055p	3	747	7			D	8129																				
YWG	925a	1042a	781	D9S						MSP	700a	824a	121	D10				B	334																				
YWG	125p	240p	783	72S						MSP	800a	920a	125	D9S	D9S			B	334																				
YWG	700p	815p	785	72S						MSP	900a	1022a	127	72S	X7			B	334																				
										MSP	1000a	1124a	165	D9S				B	334																				
										MSP	1100a	1200p	129	D9S	X7			S	334																				
										MSP	1200m	118p	105	72S				S	334																				
										MSP	100p	215p	55	72S	X7			S	334																				
										MSP	200p	316p	133	72Z				S	334																				
										MSP	300p	420p	472	D9S	X6			S	334																				
										MSP	400p	520p	135	72Z	X6			S	334																				
										MSP	500p	620p	137	747				S	334																				
										MSP	600p	720p	139	72Z				S	334																				
										MSP	700p	820p	474	757				S	334																				
										MSP	800p	920p	147	72S				S	334																				
										NRT	1150a	350p	3	747				D	6274																				
										OKA	1150a	855p	3	747	7			D	7222																				
										SEA	840a	1100a	18	72S				B	1720																				
										SEL	840a	630a	129	747	146			D	6538																				
										TPA	950a	311p	473	72S				S	1012																				
										TPA	830p	133a	479	DC9	X6			S	1012																				

FM	TO	DEP	ARR	FLT	EQ	FRQ	ST	ML	MI	FM	TO	DEP	ARR	FLT	EQ	FRQ	ST	ML	MI	FM	TO	DEP	ARR	FLT	EQ	FRQ	ST	ML	MI	FM	TO	DEP	ARR	FLT	EQ	FRQ	ST	ML	MI		
SEL	NRT	6:10p	8:10p	22	747	1		L	765	SMF	LAX	7:45a	9:00a	1836	AIR	6			373	TUS	LAX	11:38a	12:02p	1765	AIR			451	YEG	MSP	8:45a	12:10p	1020	72S			B	1086			
	NRT	6:10p	8:10p	190	747	3		L	765		LAX	8:18a	9:30a	1830	AIR	X6			373		LAX	3:08p	3:30p	1935	AIR	X6		451													
	ORD	4:10p	5:43p	20	747	146	1	D	8538		LAX	1:10p	2:22p	1900	AIR	X6			373		LAX	9:36p	9:59p	1749	AIR	X6		451													
	SEA	4:10p	8:50a	20	747	146		D	5200		LAX	11:7p	2:39p	1996	AIR	6			373		LAX	3:10p	6:53p	986	D9S		D	1224	YKM	SFO	5:20a	7:59a	1844	AIR	X67	1	S	625			
SFO	BKK	12:05p	10:55p	27	747	X347	1	D	7925		LAX	13:14p	4:49p	1704	AIR	X6			373		MSP	12:30p	4:27p	602	D9S		L	1288		SFO	7:15a	9:52a	1782	AIR	7	1	S	625			
	BUR	11:30a	12:35p	1824	AIR				326		MSP	7:00a	12:20p	396	D9S		B	1518			SAN	11:40a	11:45a	471	D9S			367													
	BUR	1:35p	2:40p	1768	AIR				326		MSP	11:40a	5:00p	398	D9S		L	1518																							
	BUR	2:47p	3:53p	1906	AIR				326		SNA	DTW	7:05a	3:27p	252	M80	X7	1	B	1960		TVG	DTW	7:35a	8:45a	2860	AIR	X6													
	BUR	3:40p	4:44p	1926	AIR				326			LAX	7:00p	7:35p	997	M80	X6	S	36			DTW	10:00a	11:15a	2805	AIR	X6														
	BUR	5:35p	6:41p	1754	AIR				326			MEM	9:30a	2:47p	998	M80	7	L	1592			DTW	11:15a	12:25p	2871	AIR	X6														
	BUR	7:45p	8:49p	1742	AIR				326			MEM	9:40a	2:57p	998	M80	X7	L	1592			DTW	2:00p	3:10p	2863	AIR	X6														
	BUR	8:40p	9:45p	1842	AIR	X6			326			MSP	6:50a	12:15p	112	M80	X7	B	1522			DTW	2:10p	3:30p	2863	AIR	6														
	DTW	7:45a	3:08p	340	757			B	2079			MSP	11:40a	5:05p	114	M80		L	1522			DTW	3:00p	4:10p	2747	AIR	X6														
	DTW	10:00p	8:20p	342	757			L	2079			PHX	7:05a	9:05a	252	M80	X7		338			DTW	7:10p	8:20p	2819	AIR	X6														
	DTW	3:50p	10:58p	344	72S	X6		D	2079			SFO	6:53a	8:15a	1983	AIR	X7		372																						
	EUG	4:50p	8:13p	1725	AIR			D	451			SFO	8:27a	9:51a	1891	AIR	X67		372																						
	EUG	9:50p	11:13p	1843	AIR	X6		D	451			SFO	2:40p	3:59p	1885	AIR	X67		372																						
	OGG	3:50p	5:41p	1931	AIR			D	732			SFO	9:30p	10:52p	1893	AIR	X6		372																						
	HNL	12:30p	3:55p	61	D10			L	2398																																
	LAS	12:51p	2:15p	1978	AIR				414																																
	LAX	9:30a	10:44a	1946	AIR	X7			337																																
	LAX	10:00a	11:14a	1770	AIR	X37			337																																
	LAX	10:30a	11:41a	1748	AIR	X6			337																																
	LAX	11:30a	12:40p	1950	AIR	X6			337																																
	LAX	2:30p	3:40p	1956	AIR	X37			337																																
	LAX	10:00p	11:09p	1744	AIR	X6			337																																
	LGB	12:51p	2:03p	1936	AIR	X6			354																																
	LGB	5:25p	6:59p	1938	AIR	X6			354																																
	LGB	8:40p	9:59p	1986	AIR	X6			354																																
	MEM	9:00a	2:50p	640	72S			B	1807																																
	MEM	12:45p	6:30p	28	727			L	1807																																
	MFR	1:00p	2:09p	1925	AIR	X6			329																																
	MFR	4:15p	5:22p	1769	AIR	X6			329																																
	MFR	9:55p	11:02p	1881	AIR	X6			329																																
	MRY	1:05p	1:39p	1832	AIR	X6			77																																
	MRY	10:00p	10:31p	1776	AIR	X6			77																																
	MSP	12:30a	5:48a	62	72S			B	1589																																
	MSP	7:00a	12:28p	354	757			B	1589																																
	MSP	11:58a	4:35p	1642	10			B	1589																																
	MSP	11:59p	8:37p	356	D10			L	1589																																
	MSP	5:00p	10:24p	358	757			D	1589																																
	NRT	12:05p	3:55p	27	747			L	5124																																
	ONT	12:25p	2:05p	1752	AIR	X6			363																																
	ONT	4:15p	5:28p	1846	AIR	X6			363																																
	ONT	6:18p	7:31p	1756	AIR	X6			363																																
	ONT	8:55p	10:08p	1974	AIR	X6			363																																
	PDX	11:15a	12:4p	1923	AIR	X6			L	550																															
	PDX	4:29p	6:03p	1885	AIR	X6			D	550																															
	PDX	8:40p	9:10p	1837	AIR	X6			D	550																															
	PHX	4:55p	4:31p	1852	AIR	X6			L	651																															
	PSC	12:10p	2:45p	1961	AIR	X6			620																																
	PSC	8:10p	9:53p	1777	AIR	X6			620																																
	RDM	4:15p	6:21p	1769	AIR	X6			1	462																															
	RNO	1:35p	2:24p	1759	AIR	X6			192																																
	RNO	4:50p	5:35p	1885	AIR	X6			192																																
	RNO	5:20p	6:05p	1969	AIR	X6			192																																
	RNO	7:28p	8:15p	1815	A																																				

TOLL FREE NUMBERS

RESERVATIONS 1-800-225-2525

FLIGHT INFORMATION 1-800-441-1818

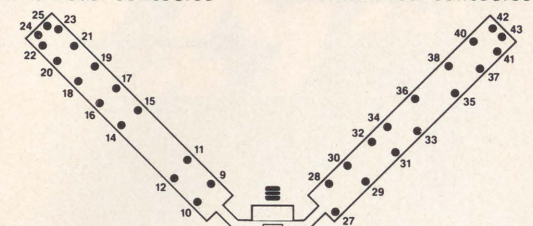
INTERNATIONAL RESERVATIONS NUMBERS

Amsterdam, The Netherlands	(020) 26-31-61	Okinawa, Japan	(0988) 58-2477/8/9
Bangkok, Thailand	253-4822	Osaka, Japan	(06) 228-0747
Brussels, Belgium	(02) 218-62-62	Oslo, Norway	02-41-77-10
Copenhagen, Denmark	(01) 14 88 99	Paris, France	(01) 42-25-74-36
Dublin, Ireland	(01) 717-766	Seoul, Korea	734-7800
Frankfurt, West Germany	(069) 234344	Shanghai, China	377387
Glasgow, Scotland	(041) 226-4175	Shannon, Ireland	(061) 62555
Guam, Mariana Island	477-7811, 2,3	Stockholm, Sweden	(08) 14 38 80
Hong Kong	5-217477	Taipei, Taiwan	(02) 7161555
London, England	(01) 629-5353	Tokyo, Japan	(03) 432-6000
Manila, Philippines	521-1911		

Memphis International Airport

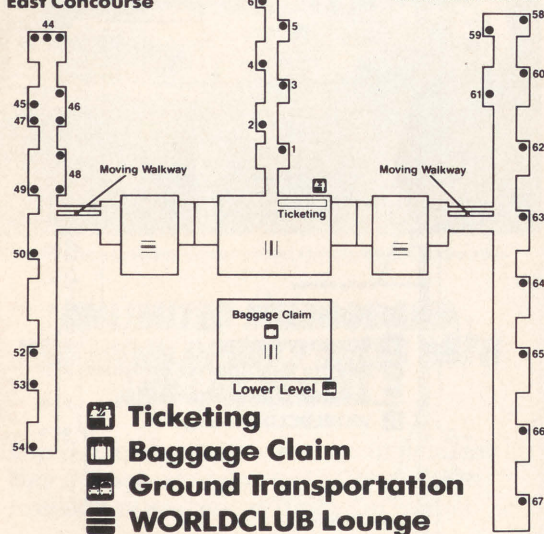
Southeast Concourse

Southwest Concourse



East Concourse

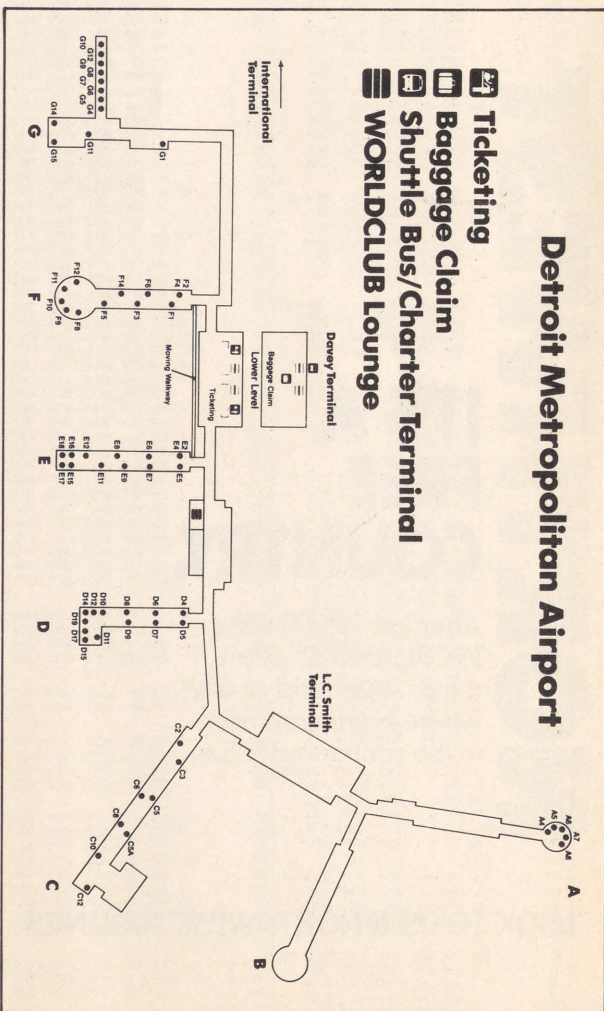
West Concourse



- Ticketing
- Baggage Claim
- Ground Transportation
- WORLDCLUB Lounge

Detroit Metropolitan Airport

- Ticketing
- Baggage Claim
- Shuttle Bus/Charter Terminal
- WORLDCLUB Lounge



Equipment designated AIR indicates Airlink Service

Airlink Flights

1700-1999
2300-2699
2700-2899
3200-3299
3800-3999

Operated By

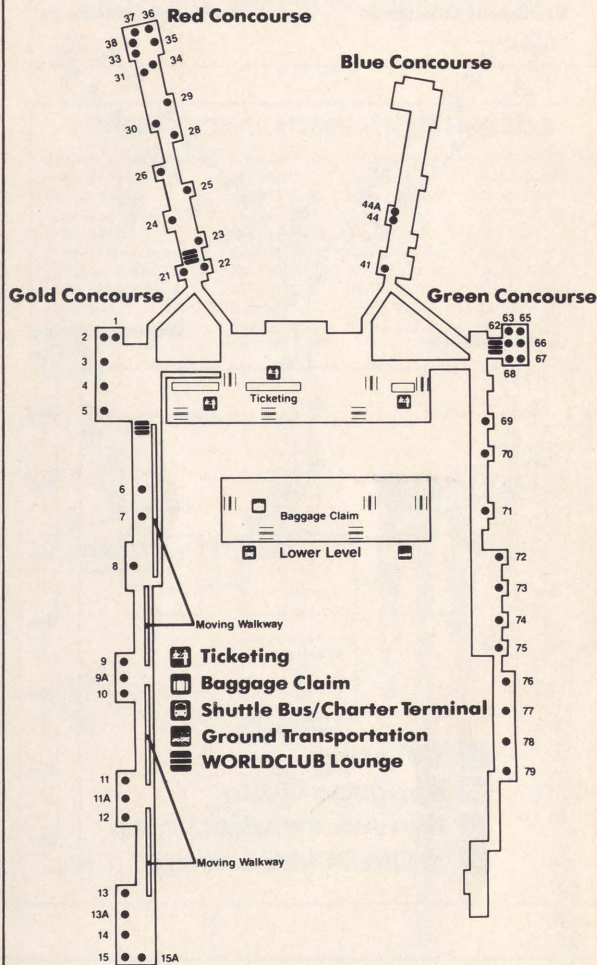
PSA
Express Airlines I
Simmons
Mesaba
Big Sky

ST - Stops	X - Except	4 - Thursday
ML - Meal	1 - Monday	5 - Friday
a - AM	2 - Tuesday	6 - Saturday
p - PM	3 - Wednesday	7 - Sunday

Northwest Toll-Free Number: 1-800-225-2525

Schedule Subject to Change

Minneapolis/St. Paul International Airport



MINIMUM CONNECTING TIMES

NW Domestic to NW Domestic :30

MKE Connect Time :20

NW Domestic to NW International

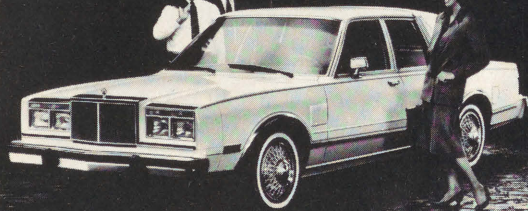
BOS	:40
DTW	:30
JFK	:40
LAX	:30
MEM	:30
MIA	:30
MSP	:40
ORD	:30
SEA	:30
SFO	:40

NW International to NW Domestic

BOS	1:00
DTW	1:30
JFK	1:45
LAX	1:30
MEM	1:15
MIA	1:00
MSP	1:30
ORD	1:30
SEA	1:00
SFO	1:30

\$29.95

Luxury



Thrifty features quality products of the Chrysler Motors Corporation.

UNLIMITED MILEAGE AND 750 WORLDPERKS MILES WITH ANY CAR RENTAL.*

Improve your bottom line and your frequent flyer mileage when you rent a Chrysler Fifth Avenue – or any car – at Thrifty Car Rental!

As a Northwest passenger, not only can you rent a luxurious Chrysler Fifth Avenue for only \$29.95 a day, but when you fly any Northwest segment, we'll give you 750 WORLDPERKS miles with any car rental, plus unlimited mileage. Call **1-800-FOR-CARS**

Thrifty

Car Rental

*Unlimited mileage is only available for WORLDPERKS members with flight segment. 150 free miles per rental day for non-members. 750 WORLDPERKS miles available with any car rental through December 31, 1987. Cars/rate/free mileage allowance subject to availability in participating cities, and does not include gas, tax, airport imposed fees, and optional PDW and PPR. A confirmed advance reservation is required. Cars must be returned to renting location. Rate may differ for non-airport arriving customers and in certain leisure destinations. Rate subject to change. Rate \$4.00 a day higher at JFK, LaGuardia, and Newark airports; not available in Manhattan. Fifth Avenue also available at \$36.95 Canadian at major airports across Canada. Check the Thrifty reservation center for complete details. © Thrifty Rent-A-Car System, Inc. 1987. All rights reserved.



REWARD YOURSELF!
Join Now. Our 1988 program
will be even better!!

Frequent guests deserve special treatment with more generous rewards, more often.

As a Radisson Frequent Guest, you'll earn ten points for virtually every dollar spent at all Radissons, and at almost all rates. We'll even start you off with 2500 bonus points for enrolling.

Whether on business or vacation, you'll be earning free flights, free hotel stays and free car rentals. So reward yourself *every* time you travel. Enroll now in the Radisson Frequent Guest Awards Program by calling 1-800-333-3333.

1-800-333-3333



The Radisson Hotels

©1987 The Radisson Hotel Corporation

7070 13