

LOOK TO US  NORTHWEST AIRLINES

FREQUENT  
FLYER  
TIMETABLE

FEBRUARY 10, 1988

INCLUDES NORTHWEST'S DIRECT FLIGHTS ONLY.

**NORTHWEST**

# Hyatt Introduces The Gold Standard Of Frequent Traveller Programs.™

With the Hyatt Gold Passport<sup>SM</sup>, you'll finally get the very special treatment you deserve and the travel awards you expect.

Hyatt Gold Passport offers you 5 minute Express Check-In<sup>SM</sup>, exclusive members-only rooms, a Morning Express<sup>SM</sup> breakfast that's delivered to your room within ten minutes, or it's free. And more.

As you stay at Hyatt, you'll earn points that entitle you to Regency Club<sup>®</sup> and suite upgrades, free Hyatt stays, even a dream holiday at any Hyatt worldwide. All for an annual fee of \$25.00.

And now, stay at Hyatt, fly Northwest and receive a 25% bonus on Gold Passport points earned on your Hyatt stay. Earn 500 extra WORLDPERKS<sup>®</sup> miles, too. For your Gold Passport membership, call 1-800-54-HYATT.



HYATT  HOTELS & RESORTS<sup>SM</sup>

Check with Hyatt for complete terms and conditions of the Hyatt Gold Passport program.  
© 1987 Hyatt Corp.

## CITIES SERVED BY NORTHWEST AIRLINES \*WORLDCLUB LOCATIONS

ABR	Aberdeen, SD	GDV	Glendive, MT
CAK	Akron/Canton, OH	GCM	Grand Cayman, B.W.I.
ALB	Albany, NY	GFK	Grand Forks, ND
ABQ	Albuquerque, NM	GRR	Grand Rapids, MI
ESF	Alexandria, LA	GPZ	Grand Rapids, MN
ABE	Allentown, PA	GTf	Great Falls, MT
APN	Alpena, MI	GRB	Green Bay, WI
ANC	Anchorage, AK	GLH	Greenville, MS
ATW	Appleton, WI	GUM	Guam, Mariana Is
ATL	Atlanta, GA	GPT	Gulfport/Biloxi, MS
AUS	Austin, TX	CMX	Hancock, MI
BWI	Baltimore, MD	BDL	Hartford, CT/Springfield, MA
BKK	Bangkok, Thailand	HVR	Havre, MT
BTR	Baton Rouge, LA	HIN	Helena, MT
BLI	Bellingham, WA	HIB	Hibbing, MN
BJI	Bemidji, MN	* HKG	Hong Kong
BIL	Billings, MT	* HNL	Honolulu, HI
BHM	Birmingham, AL	HOU	Houston (Hobby), TX
BIS	Bismarck/Mandan, ND	IAH	Houston (Intercontinental), TX
* BOS	Boston, MA	HSV	Huntsville/Decatur, AL
BZN	Bozeman, MT	HON	Huron, SD
BRD	Brainerd, MN	IND	Indianapolis, IN
BKX	Brookings, SD	INL	International Falls, MN
BUF	Buffalo/Niagara Falls, NY	IWD	Ironwood, MI
BUR	Burbank, CA	JXN	Jackson, MI
BTM	Butte, MT	JAN	Jackson, MS
CUN	Cancun, Mexico	MKL	Jackson, TN
CGI	Cape Girardeau, MO	JMS	Jamestown, ND
CID	Cedar Rapids, IA	JLN	Joplin, MO
CHA	Chattanooga, TN	AZO	Kalamazoo, MI
* ORD	Chicago (O'Hare), IL	FCA	Kalispell, MT
MDW	Chicago (Midway), IL	MCI	Kansas City, MO
CVG	Cincinnati, OH	TYS	Knoxville, TN
CKV	Clarksville, TN	ISE	La Crosse, WI
* CLE	Cleveland, OH	LAN	Lansing, MI
COU	Columbia, MO	LAS	Las Vegas, NV
GTR	Columbus, MS	PIB	Laurel/Hattiesburg, MS
CMH	Columbus, OH	LWT	Lewistown, MT
CCR	Concord, CA	LNK	Lincoln, NE
CPH	Copenhagen, Denmark	LIT	Little Rock, AR
DFW	Dallas/Ft. Worth, TX	* LGW	London (Gatwick), England
DAY	Dayton, OH	LGB	Long Beach, CA
DEN	Denver, CO	* LAX	Los Angeles, CA
DSM	Des Moines, IA	SDF	Louisville, KY
* DTW	Detroit, MI	MSN	Madison, WI
DVL	Devils Lake, ND	* MNL	Manila, Philippines
DHN	Dothan, AL	MWA	Marion, IL
DUB	Dublin, Ireland	MQT	Marquette, MI
DLH	Duluth, MN/Superior, WI	MCVW	Mason City, IA
EAU	Eau Claire, WI	MFR	Medford, OR
YEG	Edmonton, Canada	* MEM	Memphis, TN
ERI	Erie, PA	MEI	Meridian, MS
EUG	Eugene, OR	MIA	Miami, FL
EVV	Evansville, IN	MIS	Miles City, MT
FAR	Fargo, ND/Moorhead, MN	MKE	Milwaukee, WI
FYV	Fayetteville, AR	* MSP	Minneapolis/St. Paul, MN
FNT	Flint, MI	MOT	Minor, ND
FOD	Fort Dodge, IA	MSO	Missoula, MT
FLL	Fort Lauderdale, FL	MHE	Mitchell, SD
RSW	Fort Myers, FL	MOB	Mobile, AL/Pascagoula, MS
FSM	Fort Smith, AR	MLI	Moline, IL
VPS	Fort Walton Beach, FL	MLU	Monroe, LA
FWA	Fort Wayne, IN	MBJ	Montego Bay, Jamaica
FRA	Frankfurt, Germany	MRY	Monterey, CA
FAT	Fresno, CA	MGM	Montgomery, AL
GGW	Glasgow, MT	YUL	Montreal, Canada
PIK	Glasgow (Prestwick), Scotland	MSL	Muscle Shoals, AL

cities continued on next page

MKG	Muskegon, MI	* SFO	San Francisco, CA
BNA	Nashville, TN	SJC	San Jose, CA
MSY	New Orleans, LA	SRQ	Sarasota/Bradenton, FL
* JFK	New York (Kennedy), NY	CIU	Sault Ste. Marie, MI
LGA	New York (LaGuardia), NY	* SEA	Seattle/Tacoma, WA
EWR	New York (Newark), NJ	* SEL	Seoul, Korea
OAK	Oakland, CA	SHA	Shanghai, China
OKA	Okinawa, Ryukyu Is	SNN	Shannon, Ireland
OKC	Oklahoma City, OK	SHV	Shreveport, LA
OMA	Omaha, NE	SDY	Sidney, MT
ONT	Ontario, CA	SUX	Sioux City, IA
SNA	Orange County, CA	FSD	Sioux Falls, SD
MCO	Orlando, FL	SBN	South Bend, IN
* OSA	Osaka, Japan	GEG	Spokane, WA
OSH	Oshkosh, WI	SGF	Springfield, MO
OWB	Owensboro, KY	HDN	Steamboat Springs, (Hayden), CO
PAH	Paducah, KY	ARN	Stockholm, Sweden
PFN	Panama City, FL	SCK	Stockton, CA
PSC	Pasco, WA	SYR	Syracuse, NY
PLN	Pellston, MI	* TPE	Taipei, Taiwan
PNS	Pensacola, FL	* TPA	Tampa, FL
PIA	Peoria, IL	TVF	Thief River Falls, MN
PHL	Philadelphia, PA	* NRT	Tokyo (Narita), Japan
* PHX	Phoenix, AZ	TOL	Toledo, OH
PIR	Pierre, SD	YYZ	Toronto, Canada
PIT	Pittsburgh, PA	TVC	Traverse City, MI
PDX	Portland, OR	TUS	Tucson, AZ
PVD	Providence, RI	TUL	Tulsa, OK
PVR	Puerto Vallarta, Mexico	TUP	Tupelo, MS
RAP	Rapid City, SD	IAD	Washington, D.C. (Dulles)
RDM	Redmond, OR	* DCA	Washington, D.C. (Natl)
RNO	Reno, NV	ALO	Waterloo, IA
RHI	Rhineland, WI	ATY	Watertown, SD
RST	Rochester, MN	CWA	Wausau/Stevens Point, WI
ROC	Rochester, NY	PBI	West Palm Beach, FL
RFD	Rockford, IL	HPN	White Plains, NY
SMF	Sacramento, CA	ICT	Wichita, KS
MBS	Saginaw/Bay City/Midland, MI	ISN	Williston, ND
STL	St. Louis, MO	YWG	Winnipeg, Canada
SLC	Salt Lake City, UT	OLF	Wolf Point, MT
SAN	San Diego, CA	YKM	Yakima, WA

FM	TO	DEP	ARR	FLT	EQP	FRQ	ST	ML	MI	FM	TO	DEP	ARR	FLT	EQP	FRQ	ST	ML	MI
ABE	DTW	700a	828a	271	D9S				S 425	B15	FCA	1126a	130p	3842	AIR	X6	1		320
	DTW	255p	425p	427	DC9				425		FCA	246p	445p	3862	AIR	X6	1		320
	DTW	550p	718p	263	DC9	X6			425		FCA	730p	927p	3882	AIR	X6	1		320
ABQ	LAX	730a	822a	1921	AIR	7			S 677		GDV	1100a	1230p	3934	AIR	X67	1		201
	LAX	1225p	125p	1931	AIR	X7			S 677		GDV	712p	840p	3938	AIR				201
											GEG	1050a	1104a	1281	D9S				445
											GGW	1050a	1144a	3802	AIR	X67			189
ABR	MSP	605a	719a	3202	AIR				257		GGW	702p	810p	3930	AIR				189
	MSP	1025a	1140a	3272	AIR	67			257		GTf	748a	814a	3826	AIR	X7			177
	MSP	1119a	1229p	3204	AIR	X67			257		GTf	1135a	105p	3844	AIR	X6	1		177
	MSP	325p	441p	3206	AIR				257		HLN	806a	858a	3824	AIR	X7			174
	MSP	740p	855p	3208	AIR	X6			257		HLN	1135a	1227p	3844	AIR				174
											HLN	256p	348p	3864	AIR	X6			174
ALB	DTW	700a	843a	691	D9S				S 489		HLN	730p	822p	3882	AIR	X6			174
	DTW	250p	435p	695	D9S				489		HLN	830p	922p	3888	AIR				174
	DTW	554p	734p	499	D9S	X6			S 489		HVR	705a	838a	3932	AIR	X7	1		198
											HVR	205p	338p	3936	AIR	X6	1		198
ALO	MSP	620a	714a	2608	AIR	X7			166		ISN	1110a	147p	3804	AIR	X6	1		284
	MSP	1015a	1109a	2610	AIR	7			166		ISN	845p	1122p	3806	AIR				284
	MSP	1035a	1129a	2610	AIR	X7			166		LWT	705a	747a	3932	AIR	X7			97
	MSP	340p	434p	2612	AIR				166		LWT	205p	247p	3936	AIR	X6			97
	MSP	500p	554p	2688	AIR	X6			166		MLS	1100a	1150a	3934	AIR	X67			135
	MSP	750p	905p	2614	AIR	X6	1		166		MLS	712p	802p	3938	AIR				135
AMC	SEA	645a	1059a	94	Z727				B 1448		MSO	806a	858a	3824	AIR	X7	1		276
											MSO	1145a	123p	3846	AIR				276
											MSO	306p	454p	3866	AIR	X6	1		276
											MSP	925a	1215p	1050	Z2S				748
APN	DTW	725a	835a	2740	AIR	X7			198		MSP	115p	400p	1278	Z2S			S	748
	DTW	110p	220p	2732	AIR	X6			198		MSP	300p	500p	1054	D9S				748
ARN	CPH	900a	1010a	31	D10	457			342		OLF	1050a	1221p	3802	AIR	X67	1		212
	JFK	900a	300p	31	D10	457	1	D	3921		OLF	702p	841p	3930	AIR				212
											SDY	1110a	1214p	3804	AIR	X6			245
											SDY	845p	949p	3806	AIR				245
ATL	DTW	650a	834a	490	DC9	X7			B 585		ISN	615a	708a	3803	AIR	X67			166
	DTW	1035a	1219p	492	DC9				585		ISN	410p	503p	3807	AIR	X6			166
	DTW	245p	429p	484	D9S				585		MOT	138p	206p	369	D9S				105
	DTW	640p	827p	496	D9S	X6			585		MSP	610a	720a	680	D9S				386
	MEM	735a	747a	821	DC9				S 332		MSP	1110a	1220p	210	D9S				386
	MEM	1128a	1140a	823	D9S				332		MSP	335p	445p	648	D9S				386
	MEM	303p	315p	825	D9S				332		MSP	410p	520p	518	D9S	X367			386
	MEM	700p	717p	827	DC9	X6			332		SDY	615a	641a	3803	AIR	X67	1		174
	MSP	710a	840a	780	D9S				B 906		SDY	410p	441p	3807	AIR	X6	1		174
	MSP	1210p	140p	782	D9S				L 906										
	MSP	450p	624p	784	D9S	X6			S 906										
ATW	CWA	550p	610p	326	DC9	6			67		B15	MSP	600a	719a	3232	AIR	X7	1	199
	CWA	1055p	1120p	618	CVR	X6			67		MSP	705a	829a	3232	AIR	7	1		199
	DTW	910a	1125a	1400	CVR	X7			296		MSP	1200p	1255p	3234	AIR				199
	DTW	910a	1125a	1400	DC9	7			296		MSP	320p	445p	3236	AIR			1	199
	DTW	640p	845p	1456	DC9	X6			296		MSP	650p	745p	3238	AIR	X6			199
	MSP	720a	825a	1401	CVR	X7			236		B15	MEM	815a	640p	28	747	X367	2	D 8974
	MSP	1225p	130p	1405	CVR				236		NRT	815a	335p	28	747	X367	L	2887	
	MSP	350p	455p	1407	CVR				236		SFO	815a	945a	28	747	X367	1	D 7925	
ATY	MSP	623a	723a	3270	AIR	X67			193		BKX	MSP	630a	724a	3210	AIR	X7		182
	MSP	1037a	1229p	3204	AIR	X67	1		193		MSP	433p	528p	3212	AIR	X67			182
	MSP	1045a	1140a	3204	AIR	67			193		MSP	433p	528p	3214	AIR	7			182
	MSP	229p	441p	3206	AIR		1		193										
AUS	MEM	1000a	1124a	873	DC9				556		B15	SEA	1206p	1242p	1802	AIR	X6		94
	MEM	115p	245p	960	DC9				556		SEA	308p	342p	1892	AIR				94
	MEM	551p	720p	636	DC9	X6			S 556										
AZO	DTW	635a	725a	2824	AIR	X7			113		BNA	DTW	845a	1110a	364	DC9			S 457
	DTW	740a	816a	524	Z2S				113		DTW	1000a	1222p	954	D9S	X7			457
	DTW	1045a	1125a	1452	CVR				113		DTW	210p	434p	509	D9S				457
	DTW	225p	303p	616	D9S				113		DTW	550p	816p	1035	D9S	X6			457
	DTW	530p	820p	2823	AIR	X6			113		MEM	700a	752a	650	D9S				200
	DTW	740p	815p	298	DC9	X6			113		MEM	1045a	1137a	289	D9S				200
	LAN	350p	413p	1030	DC9				62		MEM	215p	310p	1254	D9S				200
	LAN	825p	848p	1032	D9S	X6			62		MEM	622p	716p	1125	D9S				200
	MSP	820a	840a	641	D9S				426		MEM	900p	945p	136	D9S	X6			200
	MSP	535p	603p	1025	DC9	X6			426										
BDL	DTW	700a	850a	743	Z2S				S 548		BOS	DCA	245p	413p	1651	Z2S			399
	DTW	1020a	1210p	1183	D9S				548		DTW	630a	838a	81	Z57			B	632
	DTW	245p	435p	738	D9S				548		DTW	815a	1020a	383	D9S	X7			632
	DTW	510p	700p	1187	D9S	X6			S 548		DTW	1000a	1205p	475	Z2S				632
	DTW	645p	833p	1189	Z2S	X6			548		DTW	220p	430p	49	D10				S 632
	MSP	640a	833a	707	D9S	X7			B 1050		DTW	500p	707p	389	D10				S 632
	MSP	420p	613p	279	D9S	X7			S 1050		DTW	735p	942p	391	Z2S	X6			632
											FRA	920p	1225p	34	D10	15	1	D	3670
											JFK	330p	441p	35	Z2S				187
											LSW	600p	710a	46	D10				B 3283
											MEM	915a	1132a	553	Z2S	X7			B 1139
											MEM	915a	1132a	661	Z2S	X7			B 1139



FM	TO	DEP	ARR	FLT	EQP	FRQ	ST	ML	MI	FM	TO	DEP	ARR	FLT	EQP	FRQ	ST	ML	MI	FM	TO	DEP	ARR	FLT	EQP	FRQ	ST	ML	MI	FM	TO	DEP	ARR	FLT	EQP	FRQ	ST	ML	MI	
DTW	IND	1255p	155p	1183	D95				230	DTW	PHL	2000	322p	206	725	X6			453	ESF	MEM	650a	810a	2502	AIR	X7			285	FWA	DTW	230p	312p	276	DC9		128			
IND	545p	647p	535	725	X6				230	PHL	415p	550p	340	757	X6			453	285	DTW	740p	823p	328	DC9	X6			128												
IND	805p	906p	533	D95	X6				230	PHL	535p	702p	472	D95	X6		S	453	285	MEM	1025a	1140a	2504	AIR	X7			285												
JFK	400p	540p	38	D95	X7				509	PHL	915p	1038p	212	725	X6			453	285	MEM	155p	310p	2506	AIR	X7			285												
JXN	940a	1010a	2760	AIR	X7				57	PHX	1000a	1203p	251	D10			B	1671	285	MEM	535p	653p	2508	AIR	X7			285												
JXN	615p	645p	2762	AIR	X6				57	PHX	1100p	310p	255	725	X6		L	1671	285																					
LAN	910a	945a	2873	AIR	X7				74	PHX	800p	1008p	257	M80	X6		D	1671	346																					
LAN	925a	955a	1470	CVR	X7				74	PIA	1200p	855p	1463	CVR	X6			346																						
LAN	1205p	1245p	2787	AIR	X7				74	PIA	2200p	855p	267	CVR	X6			346																						
LAN	115p	149p	1445	CVR	X6				74	PIT	945a	1040a	1058	D95	X7			201																						
LAN	410a	450p	2714	AIR	X6				74	PIT	1210p	105p	734	DC9	X7		1	247																						
LAN	500p	535p	2806	AIR	X6				74	PIT	405p	503p	260	DC9	X7			201																						
LAN	515p	549p	1447	CVR	X6				74	PIT	915p	1007p	825	D95	X6			201																						
LAN	755p	829p	1476	CVR	X6				74	PLN	930a	1130a	2870	AIR	6		1	242																						
LAN	815p	850p	2706	AIR	X6				74	PLN	415p	610p	2658	AIR	X6		1	242																						
LAN	915p	950p	2757	AIR	X6				74	PLN	510p	700p	2658	AIR	6		1	242																						
LAS	1000a	1110a	1191	725	X6				S 1749	PLN	820p	1015p	2864	AIR	X6		1	242																						
LAX	925a	1113a	333	D10					B 1979	PVD	1205p	137p	364	DC9	X6		S	614																						
LAX	110p	249p	335	725	X6				L 1979	PVD	410p	547p	276	DC9	X6			614																						
LAX	525p	707p	337	757	X6				D 1979	PVD	920p	1054p	496	D95	X6			614																						
LAX	815p	1010p	339	757	X6				D 1979	ROC	810p	913a	250	DC9	X7			296																						
LGA	700a	829a	520	D95	X67				S 501	ROC	1205p	108p	258	DC9	X6		S	296																						
LGA	810a	940a	527	757	X1				S 501	ROC	415p	522p	488	D95	X6			296																						
LGA	1205p	1100a	527	757	X6				S 501	ROC	2200p	1027p	293	D95	X6			296																						
LGA	1220p	148p	290	757	X6				S 501	RSW	950a	1237p	1111	757	X6		S	1085																						
LGA	300a	428p	534	727	X6				S 501	RSW	1200p	247p	1113	D95	L	1085																								
LGA	420p	557p	252	M80					501	RSW	1250p	337p	1119	D95	6		L	1085																						
LGA	420p	557p	536	D95	X6				501	RSW	425p	712p	1115	757	6		S	1085																						
LGA	530p	705p	540	D95	X6				S 501	RSW	540p	1127p	297	757	X6		1	1085																						
LGA	700p	832p	1114	D95	X6				S 501	RSW	800p	1047p	1115	725	X6			1085																						
LGA	750p	920p	544	727	X6				501	SAN	725a	1052a	193	725	X6			B	1956																					
LGA	925p	1057p	548	725	X6				501	SAN	945a	1126a	285	727	X6			B	1956																					
LGB	300p	710a	48	D10					1 D 3786	SAN	805p	946p	287	727	X6		D	1956																						
MBS	925a	1009a	283	D95	X67				98	SBN	900a	1010a	490	DC9	X7			157																						
MBS	100p	140p	1123	D95	X6				98	SBN	100p	152p	1483	CVR	X6			157																						
MBS	420p	503p	1455	CVR	X6				98	SBN	530p	621p	1485	CVR	X6			157																						
MBS	525p	605p	750	M80	X6				98	SBN	800p	859p	1457	CVR	X6			157																						
MBS	600p	840p	297	757	X6				98	SDF	1200p	200p	1139	D95	X6			306																						
MBS	920p	1000p	288	727	X6				98	SDF	355p	645p	1105	D95	X6			306																						
MCI	945a	1037a	265	DC9	X6				630	SDF	805p	915p	277	DC9	X6			306																						
MCI	930a	630p	1141	D95	X6				S 630	SEA	955a	1140a	579	725	X6		L	1927																						
MCI	800p	855p	263	DC9	X6				630	SEA	805p	950p	581	757	X6		D	1927																						
MCO	745a	1013a	439	D95	X7				B 957	SEL	105p	930p	11	747	X7		1 D	6623																						
MCO	955a	1225p	441	D10					S 957	SEL	105p	1000p	11	747	7		1 D	6623																						
MCO	1200p	235p	443	725	X6				L 957	SFO	930a	1140a	81	757	X6			B	2079																					
MCO	425p	655p	445	757	X6				S 957	SFO	110p	300p	343	725	X6			L	2079																					
MCO	535p	802p	447	D95	6				S 957	SFO	525p	725p	345	757	X6		D	2079																						
MCO	810p	1037p	447	757	X6				S 957	SNA	800p	1040p	257	M80	X6		1 D	1960																						
MEM	700a	752a	291	757	X6				S 610	SRO	925a	1200p	1131	757	X6		S	1023																						
MEM	1045a	1135a	293	757	X6				610	SRO	1215p	246p	305	725	X67		L	1023																						
MEM	150p	240p	295	725	X6				610	SRO	1215p	246p	1133	725	67		L	1023																						
MEM	540p	635p	297	757	X6				S 610	SRO	425p	700p	1135	725	6		S	1023																						
MIA	915p	1003p	299	DC9	X6				610	SRO	755p	1030p	1135	725	6		S	1023																						
MIA	935a	1231p	10																																					











FM	TO	DEP	ARR	FLT	EQP	FRQ	ST	ML	MI	FM	TO	DEP	ARR	FLT	EQP	FRQ	ST	ML	MI	FM	TO	DEP	ARR	FLT	EQP	FRQ	ST	ML	MI	FM	TO	DEP	ARR	FLT	EQP	FRQ	ST	ML	MI
SEA	NRT	1255p	355p	7	747	X17	D	4769		SJC	LAX	705a	817a	1726	AIR	X7			308	TUP	MEM	725a	757a	2308	AIR	X67	88		88	TYS	MEM	300p	310p	1004	D9S				342
	OKA	1255p	755p	7	747	2	1	D	5785		LAX	920a	1032a	1732	AIR	X7			308		MEM	725a	758a	2510	AIR	6	88		342		MEM	640p	650p	983	D9S	X6			342
	OKA	1255p	1010p	7	747	4	2	D	5765		LAX	1020a	1130a	1706	AIR	X6			308		MEM	1055a	1127a	2460	AIR	8	88				VPS	MEM	650a	805a	944	D9S			373
	OSA	1155a	645p	7	747	17	1	D	5015		LAX	1200a	225p	1914	AIR	X6			308		MEM	235p	1077p	2514	AIR	8	88				MEM	1033a	1145a	803	D9S				373
	OSA	1255p	645p	7	747	34	1	D	5015		LAX	420p	531p	1912	AIR	X6			308		MEM	555p	627p	2516	AIR	8	88				MEM	207p	320p	1079	D9S				373
	PDX	830a	909a	1279	D9S				129		LAX	620p	733p	1858	AIR	X6			308		MEM	909p	940p	2538	AIR	X6	88				MEM	550p	702p	1002	D9S	X6	S	373	
	PDX	1150a	1230p	1295	D9S				129																														
	RNO	1015p	1052p	86	72S				129		SLC	MSP	850a	1210p	676	72S		S	991		TUS	LAX	950a	1022a	1825	AIR	7	S	451										
	RNO	1135a	103p	1940	AIR				129		MSP	1245p	400p	752	D9S			L	991		LAX	1157a	1225p	1929	AIR	X7	451												
	RNO	230p	401p	1980	AIR				563		SMF	LAX	620a	739a	1702	AIR	X7	S	373		LAX	1250p	125p	1931	AIR	7	S	451											
	RNO	940p	1108p	1996	AIR	5			563		LAX	820a	943a	1830	AIR	X6			373		LAX	300p	325p	1935	AIR	X67	451												
	SFO	845a	1045a	1964	AIR		B	678		LAX	350p	509p	1704	AIR	X6			373		LAX	620p	650p	1857	AIR	6	451													
	SFO	110p	305p	1926	AIR	X6	L	678		LAX	955p	110p	1840	AIR	X6			373		MEM	320p	701p	1028	D9S	D	1224													
	SFO	412p	607p	1892	AIR		D	678		MSP	1045p	1205p	600	72S	B	1298		MSP	1245p	437p	602	D9S	L	1298															
	SFO	611p	811p	1836	AIR	X6	D	678		MSP	700a	1217p	396	72S	B	1518		SAN	1145a	1150p	1027	D9S	L	1367															
	SHA	1255p	835p	77	747	5	1	D	5736		MSP	1140a	457p	398	727	L	1518																						
SEL	DTW	1240p	230p	12	747		1	D	6623		SNA	DTW	650a	313p	252	M80	X7	1	B	1960		TVC	DTW	735a	845a	2860	AIR	X6		207									
	NRT	1240p	240p	12	747		1	D	6623		LAX	650p	725p	997	M80	X6			36		DTW	1005a	1115a	2805	AIR		207												
											MEM	930a	251p	998	M80	7	L	1592		DTW	1105a	1215p	2871	AIR	X67	207													
SFO	BKK	1205p	1055p	27	747	X145	1	D	7925		MEM	945a	305p	998	M80	X7	L	1592		DTW	200p	310p	2863	AIR	X6	207													
	BUR	1140a	1250p	1824	AIR				326		MSP	650a	1215p	112	M80	X7	B	1522		DTW	210p	330p	2863	AIR	X6	207													
	BUR	110p	220p	1766	AIR				326		MSP	1135a	501p	114	M80	X7	L	1522		DTW	300p	410p	2747	AIR	X6	207													
	BUR	255p	401p	1940	AIR				326		PHX	650a	850a	252	M80	X7	S	372		DTW	715p	825p	2819	AIR	X6	207													
	BUR	430p	535p	1852	AIR				326		SFO	615a	399a	1981	AIR	X67		372																					
	BUR	545p	655p	1754	AIR				326		SFO	1050a	1215p	1981	AIR	X67		372		TVF	MSP	615a	724a	3230	AIR	X7	1	261											
	BUR	840p	953p	1842	AIR				326		SFO	1207p	132p	1793	AIR	X6		372		MSP	1125a	1255p	3234	AIR		342													
	DTW	1220a	725a	82	72S				2079		SFO	930p	1052p	1893	AIR	X6		372		TYS	MEM	735a	747a	970	D9S		342												
	DTW	745a	305p	340	757		B	2079		SNN	BOS	900a	100p	35	D10	5	1	D	2895		MEM	1125a	1139a	768	DC9		342												
	DTW	100p	820p	342	757		L	2079		JFK	900a	441p	35	D10	5	2	D	3082																					
	DTW	430p	555p	1769	AIR		D	451		PIK	900a	1000a	35	D10	5			262																					
	HNL	1220p	300p	81	D10		L	2398		SRQ	DTW	835a	1111a	1130	72S			S	1023																				
	LAS	1252p	222p	1978	AIR				414		DTW	1250p	330p	1132	757			S	1023																				
	LAS	253p	413p	1786	AIR	X6			414		DTW	350p	630p	1134	72S			S	1023																				
	LAS	420p	540p	1972	AIR	6			414		MEM	1020a	1116a	735	D9S			S	686																				
	LAX	730a	847a	1942	AIR	6	S	337		MEM	150p	246p	737	D9S			S	686																					
	LAX	900a	920a	1906	AIR	6	S	337		MSP	555p	651p	738	D9S			S	686																					
	LAX	800a	1020a	1708	AIR	6	S	337		MSP	230p	449p	1238	727	6			1343																					
	LAX	1000a	1120a	1770	AIR	6	S	337		STL	DTW	835a	1103a	460	DC9			S	440																				
	LAX	1030a	1150a	1748	AIR	X367			337		DTW	1225p	245p	482	D9S			S	440																				
	LAX	1200p	117p	1714	AIR				337		DTW	500p	817p	981	M80	X6			S	440																			
	LGB	1250p	213p	1936	AIR	X6			354		MEM	700a	810a	971	D9S			S	256																				
	LGB	140p	300p	1934	AIR	6			354		MEM	1040a	1140a	973	D9S			S	256																				
	LGB	552p	659p	1938	AIR	6			354		MEM	210p	310p	997	M80			S	256																				
	LGB	840p	959p	1968	AIR	X6			354		MEM	630p	730p	537	D9S			S	256																				
	MEM	900a	255p	640	M80		B	1807		MSP	905p	1002p	948	D9S	X6			S	448																				
	MEM	1245p	640p	28	727		B	1827		MSP	710a	837a	590	D9S	X7			S	448																				
	MFR	515p	622p	1887	AIR	X367			329		MSP	1000a	1130a	592	DC9			S	448																				
	MRY	135p	210p	1832	AIR	X6			77		MSP	315p	442p	596	D9S			S	448																				
	MRY	520p	500p	1848	AIR	6			77		MSP	735p	901p	598	D9S	X6			S	448																			
	MRY	940p	1011p	1776	AIR	X6			77		SUX	MSP	600a	709a	2580	AIR	X7			234																			
	MSP	100a	617a	350	72S				1589		MSP	640a	822a	2644	AIR	X67	1			234																			
	MSP	700a	1228p	352	D10		B	1589		MSP	930a	1112a	2646	AIR	X67	1			234																				
	MSP	1110a	434p	1642	D10		L	1589		MSP	1000a	1112a	2644	AIR	X7				234																				
	MSP	315p	837p	356	757		D	1589		MSP	1110a	1220p	2582	AIR	X6				234																				
	MSP	530p	1058p	358	72S	X6			D	1589		MSP	100p	420p	2584	AIR	X6			234																			
	NRT	1205p	355p	27	747		L	5124		MSP	715p	827p	2586	AIR	X6				234																				
	ONT	1250p	208p	1752	AIR				363		SYR	DTW	710a	835a	283	D9S	X7		S	374																			
	ONT	423p	538p	1846	AIR	X6			363		DTW	1050a	1210p	431	D9S				374																				
	ONT	555p	708p	1756	AIR	X6			363		DTW	320p	444p	275	D9S				374																				
	ONT	655p	808p	1758	AIR	6			363		DTW	545p	707p	367	D9S	X6			374																				
	PDX	1150a	123p	1923	AIR				L	550		TOL	DTW	810a	845a	2830	AIR	X7		49																			
	PDX	750p	822p	1839	AIR	6			D	550		DTW	1045a	1120a	2832	AIR				49																			
	PHX	145p	435p	1952	AIR		L	651		DTW	240p</																												





## TOLL FREE NUMBERS

RESERVATIONS 1-800-225-2525

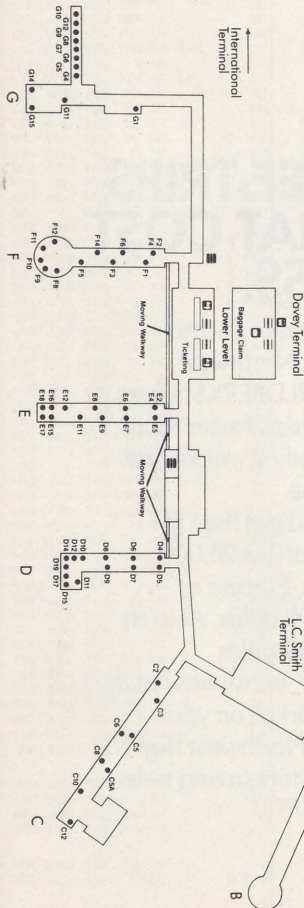
FLIGHT INFORMATION 1-800-441-1818

## INTERNATIONAL RESERVATIONS NUMBERS

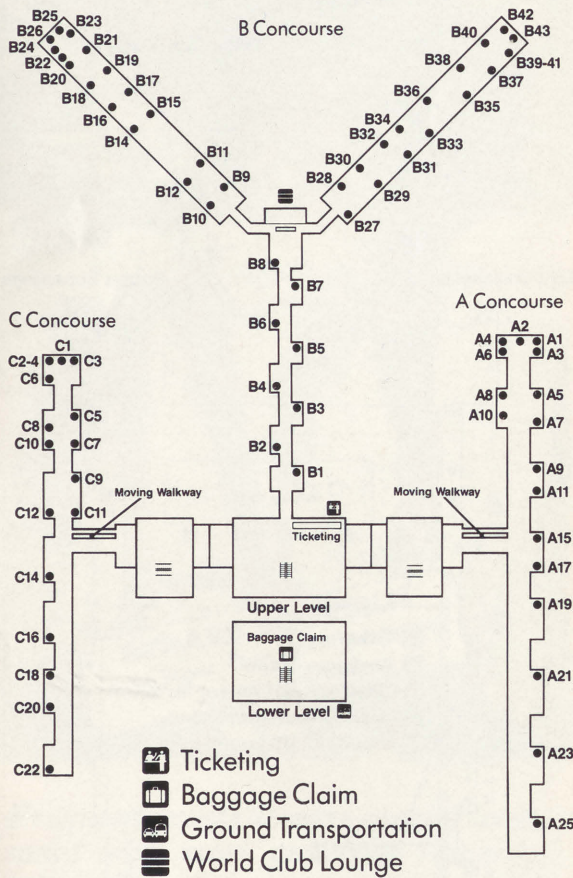
Amsterdam, The Netherlands	(020) 26-31-61	Okinawa, Japan	(0988) 58-2477/8/9
Bangkok, Thailand	253-4822	Osaka, Japan	(06) 228-0747
Brussels, Belgium	(02) 218-62-62	Oslo, Norway	02-41-77-10
Copenhagen, Denmark	(01) 14 88 99	Paris, France	(01) 42-25-74-36
Dublin, Ireland	(01) 717-766	Seoul, Korea	734-7800
Frankfurt, West Germany	(069) 234344	Shanghai, China	377387
Glasgow, Scotland	(041) 226-4175	Shannon, Ireland	(061) 62555
Guam, Mariana Island	477-7811, 2,3	Stockholm, Sweden	(08) 14 38 80
Hong Kong	5-217477	Taipei, Taiwan	(02) 7161555
London, England	(01) 629-5353	Tokyo, Japan	(03) 432-6000
Manila, Philippines	521-1911		

 Ticketing  
 Baggage Claim  
 Shuttle Bus/Charter Terminal  
 WORLDCLUB Lounge

## Detroit Metropolitan Airport



## Memphis International Airport



Equipment designated AIR indicates Airlink Service

### Airlink Flights

1700-1999  
 2300-2699  
 2700-2899  
 3200-3299  
 3800-3999

### Operated By

PSA  
 Express Airlines I  
 Simmons  
 Mesaba  
 Big Sky

ST - Stops

ML - Meal

a - AM

p - PM

X - Except

1 - Monday

2 - Tuesday

3 - Wednesday

4 - Thursday

5 - Friday

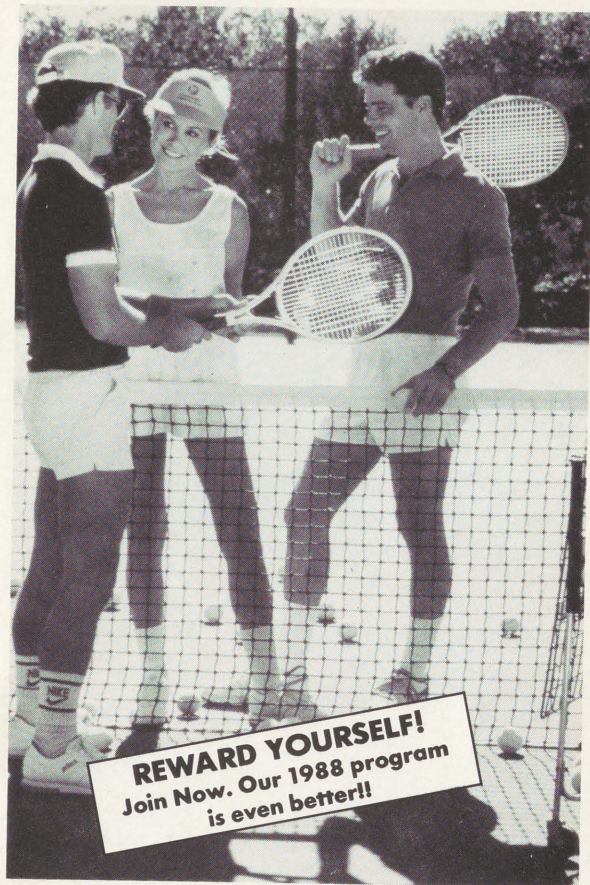
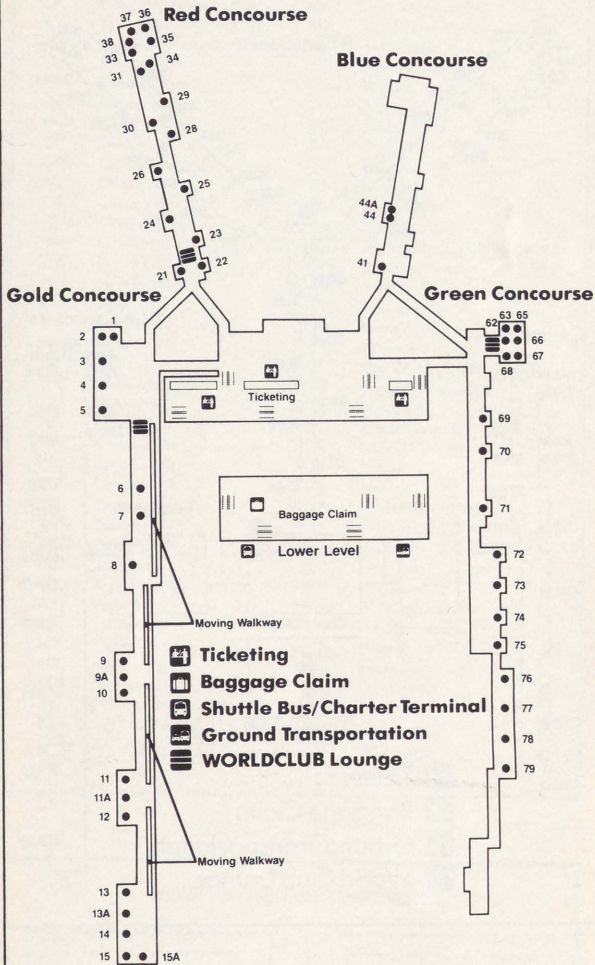
6 - Saturday

7 - Sunday

Northwest Toll-Free Number: 1-800-225-2525

Schedule Subject to Change

# Minneapolis/St. Paul International Airport



**REWARD YOURSELF!**  
Join Now. Our 1988 program  
is even better!!

*Frequent guests deserve special treatment with more generous rewards, more often.*

As a Radisson Frequent Guest, you'll earn ten points for virtually every dollar spent at all Radissons, and at almost **all** rates. We'll even start you off with 2500 bonus points for enrolling.

Whether on business or vacation, you'll be earning free flights, free hotel stays and free car rentals. So reward yourself *every* time you travel. Enroll now in the Radisson Frequent Guest Awards Program by calling 1-800-333-3333.

**1-800-333-3333**

## MINIMUM CONNECTING TIMES

NW Domestic to NW Domestic :30  
MKE Connect Time :20

### NW Domestic to NW International

BOS :40  
DTW :30  
JFK :40  
LAX :30  
MEM :30  
MIA :30  
MSP :40  
ORD :30  
SEA :30  
SFO :40

### NW International to NW Domestic

BOS 1:00  
DTW 1:30  
JFK 1:45  
LAX 1:30  
MEM 1:15  
MIA 1:00  
MSP 1:30  
ORD 1:30  
SEA 1:00  
SFO 1:30

 **The Radisson Hotels**

# Where's your boarding pass?

**Now it's worth 500  
WorldPerks<sup>®</sup> Miles  
when you rent from Avis!**

Avis is now part of the Northwest WorldPerks Program. Just bring us your WorldPerks number and Northwest boarding pass, and you'll get 500 WorldPerks Miles with every qualifying rental.\*

Plus a whole lot more. Like a wide selection of quality Avis cars. The kind of cars you're looking for. Not the kind you have to settle for.

And the exclusive Avis Rate Shoppers Guide<sup>SM</sup> that assures you of the lowest available SuperValue Rate every time you rent.

Then, there's the famous Avis Express<sup>®</sup> Check-In. And now, Avis Roving Rapid Return, the carside service that has you on your way, with an accurate printed receipt in just seconds.\*\*

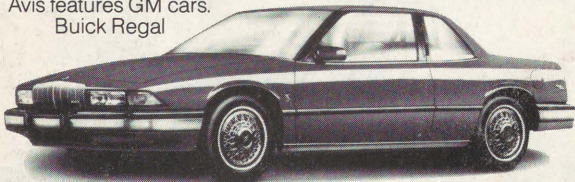
So bring your Northwest boarding pass to Avis. We're always trying harder to make your traveling easier.



**Red hot<sup>SM</sup>**

**NORTHWEST AIRLINES  
WORLDPERKS<sup>®</sup>**

Avis features GM cars.  
Buick Regal



\*At participating U.S. airport locations. \*\*For charge card customers who do not require modifications of their rental charges.

© 1988 Wizard Co., Inc.