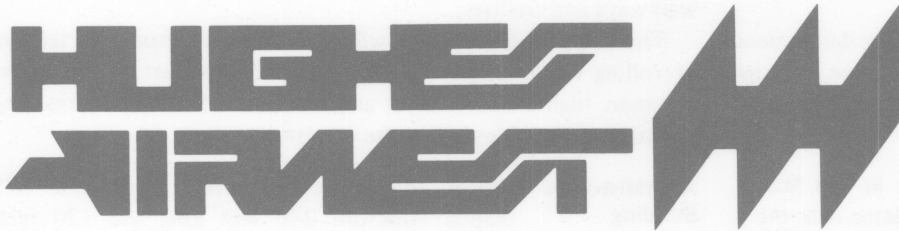


Special Edition

Ground Broken for \$6.1 Million Headquarters Complex



Vol. 4, No. 6

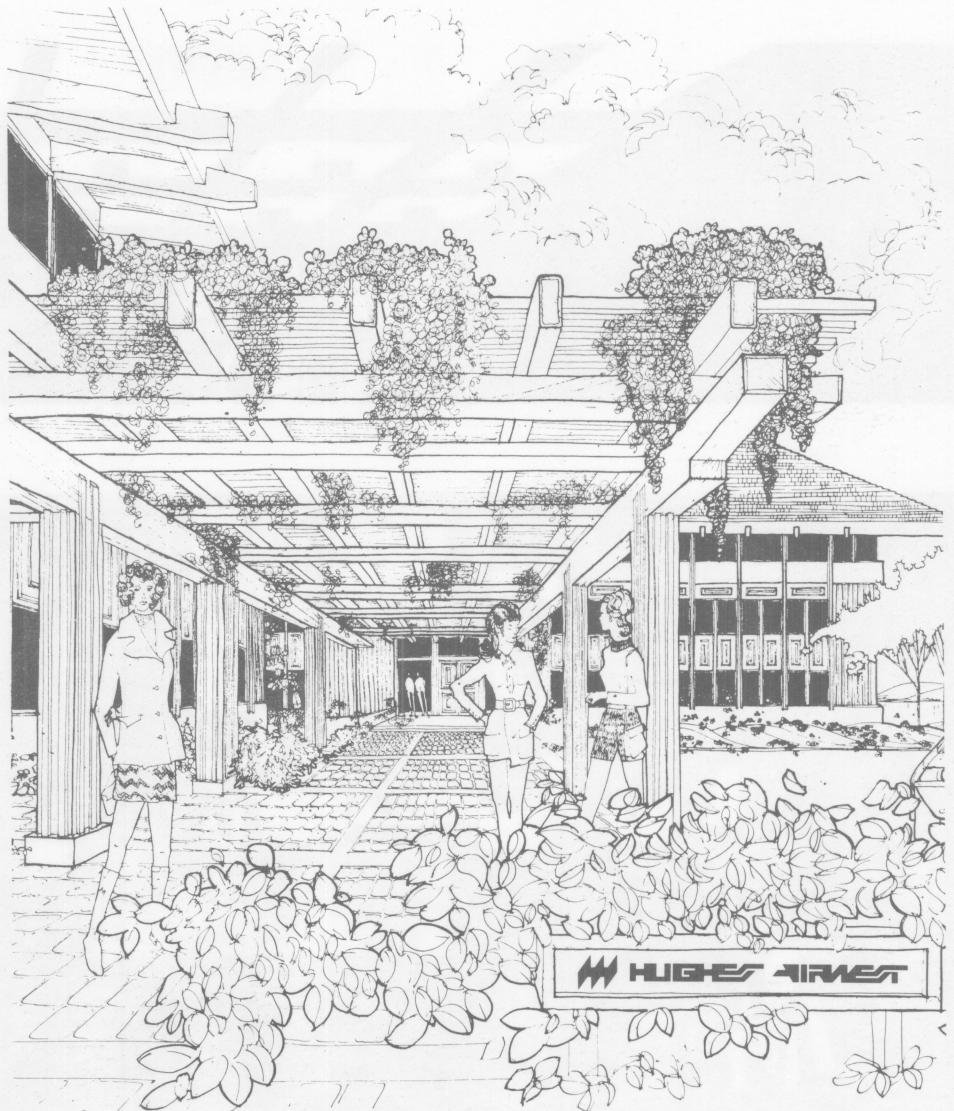
HUGHES AIR CORP.

August, 1972

This issue is devoted entirely to coverage of events relating to groundbreaking ceremonies for the company's new \$6.1 million international headquarters complex now being built in San Mateo. Regular coverage of company news will resume in September.



FIRST SHOVEL — Board member Raymond Holliday turned the first shovel of dirt in the ceremonies. Each board member took turns with the shovel to break ground for construction to begin. George Galvin (right), director of public affairs, was master of ceremonies.



HUGHES AIRWEST PLAZA — Walkways of ceramic tile and redwood trellises connect the two three-story buildings in Hughes Airwest's new headquarters complex. Construction is under way with occupancy planned for April, 1973.

A Profile:

New Headquarters To Be A 'Showplace'

What Is It? New \$6.1-million international headquarters complex for Hughes Airwest — operational nerve center for the only certificated, scheduled airline based in the San Francisco Bay Area.

From it, the carrier will direct its around-the-clock daily operations in the United States, Mexico and Canada to serve, through 75 airports in this region, more cities and communities than all other airlines combined.

Where Is It? Hillsdale Boulevard and Clearview Way in San Mateo, Calif., southeast of the College of San Mateo near the J. Arthur Younger Freeway (92).

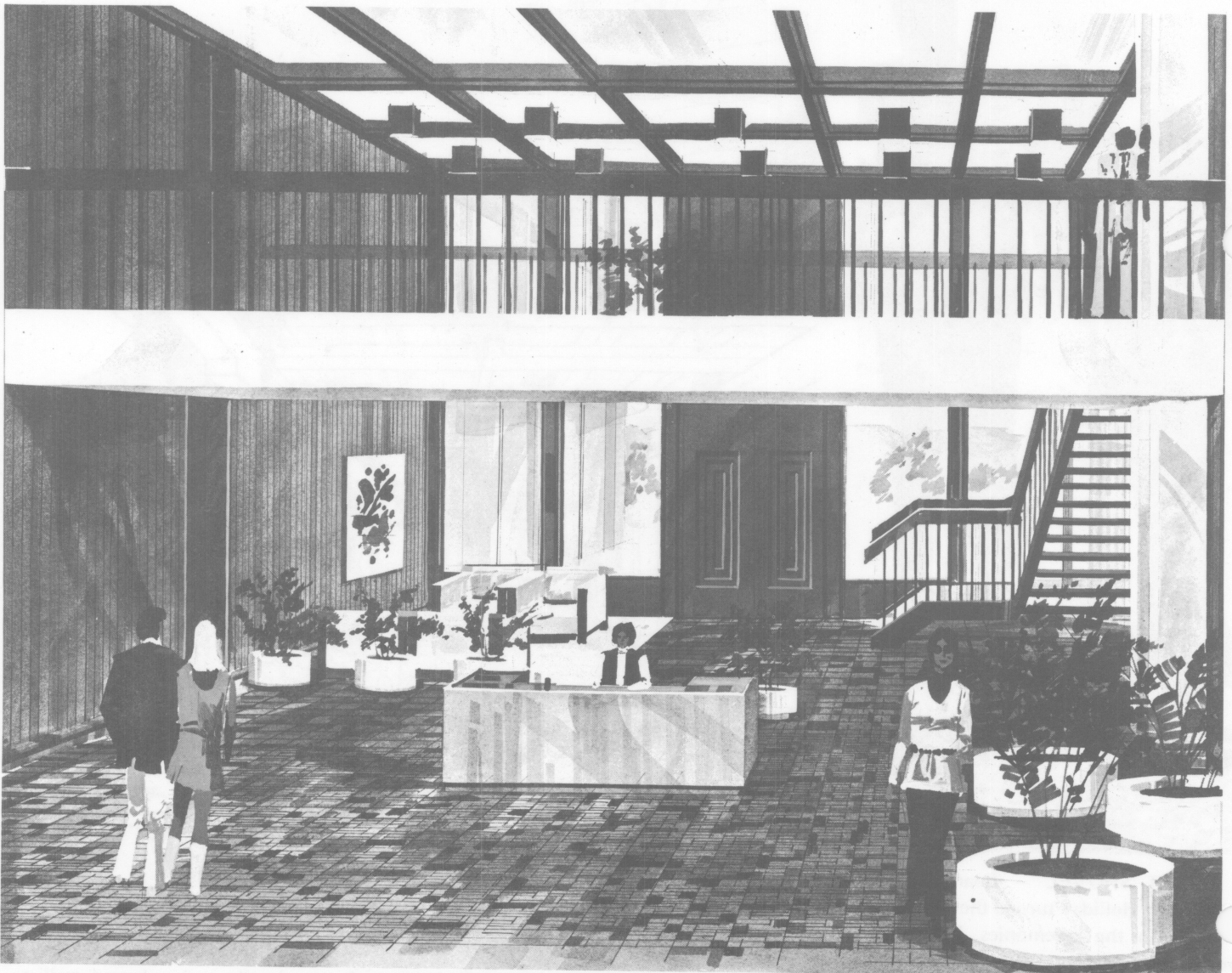
Its unrestricted hilltop view overlooks the central San Francisco peninsula and San Francisco Bay.

About The Plaza Hughes Airwest Plaza will consist of two three-story buildings (administrative and operations) totaling nearly 110,000 square feet of space. They will be linked by walkways and trellises.

The low-profile buildings will blend into a picturesque terrain of rolling hills and gnarled scrub oaks in contrast to the more common high box-like steel and concrete office structures frequently seen in cities across the country.

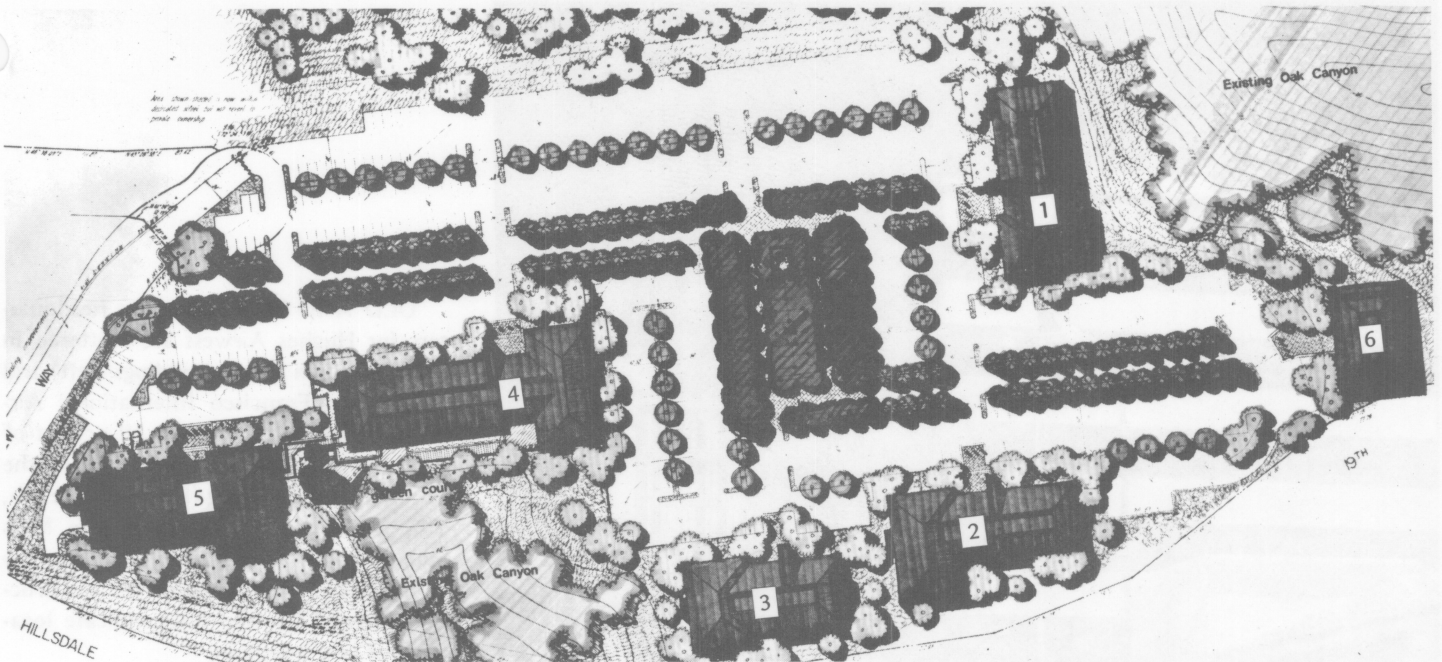
Administrative Building 66,000 square feet of office space in a "T" shaped structure 240 feet long and 120 feet wide at its widest point. In addition to executive offices, the building will have a 162-seat employe cafeteria opening onto a deck.

(Continued page 6)



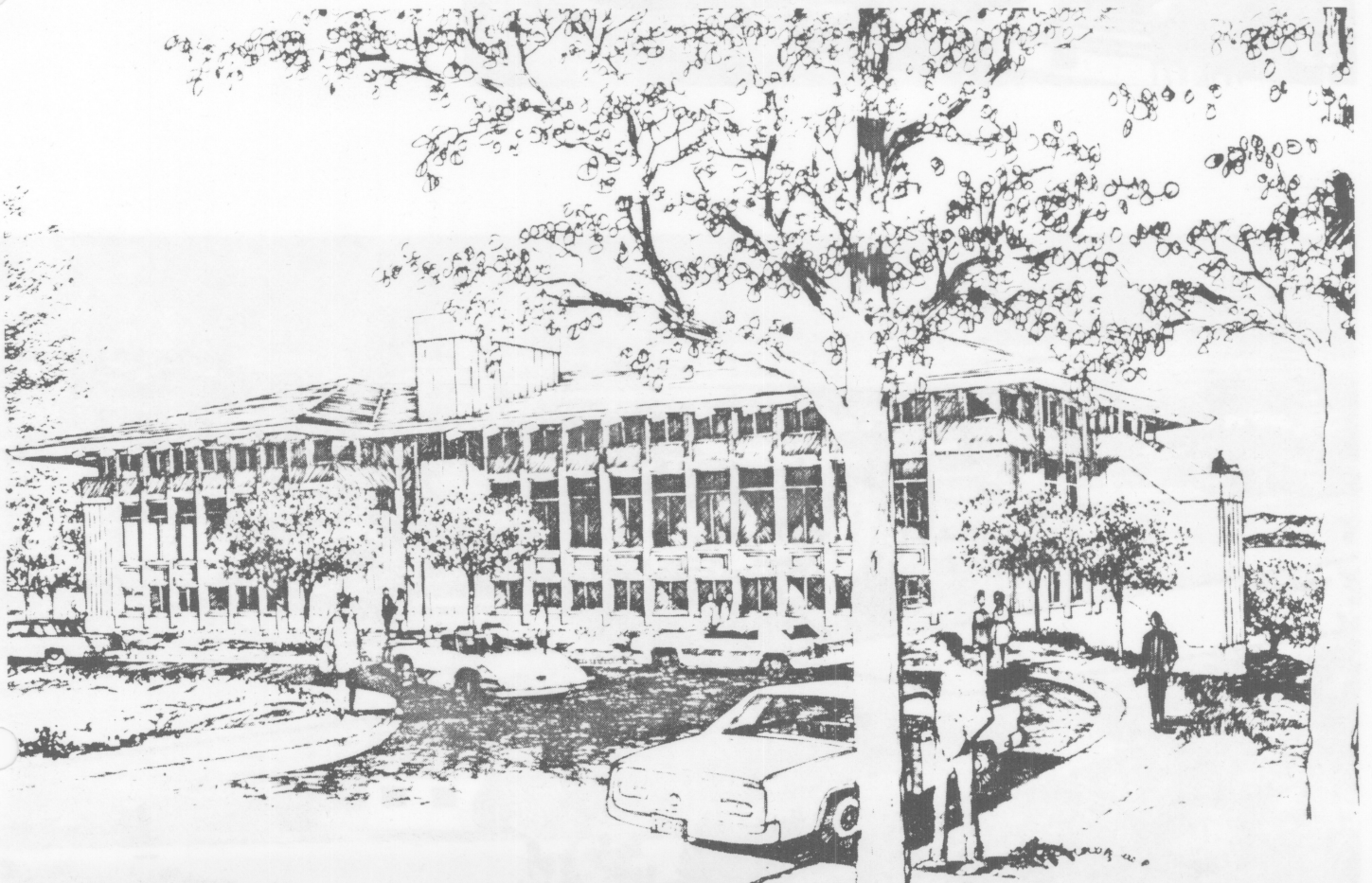
SPACIOUS LOBBY — The administrative building — largest of the two structures in the complex — will have a spacious lobby extending its width and an unrestricted view of San Francisco

Bay. The interiors of both buildings will feature exposed beam ceilings and high redwood walls.



HILLTOP 'SHOWPLACE' — Hughes Airwest's new international headquarters will be a hilltop 'showplace' complex. Its location just below the College of San Mateo. The aerial view (above) shows the placement of the buildings in the complex. Hughes Airwest will be located in buildings four and five. Building six is a large public restaurant. The other buildings will be

occupied by other firms. The building's construction (below), shows the contrast between the more common box-like steel and concrete structures often seen in cities, and Hughes Airwest's rustic design. Building materials feature redwood exteriors and split shake shingle roofs.





OLD AND NEW – Current headquarters for Hughes Airwest are scattered in these two San Mateo buildings (left) and at the San Francisco International Airport. Offices occupy either all or part of the 2nd, 3rd, 4th and 6th floors of the Crocker Bank Building (left), and the 5th, 7th, 8th and 9th floors of the Mills Square Tower (right). Land for the new complex has been prepared for construction (below). Dotted lines indicate locations of new buildings.





NEWEST FLIGHT ATTENDANTS — Hughes Airwest's newest flight attendants are (from left front): Patricia Christopher, Deedra Ditchman, Catherine Dollarhide, Jayne Glover, Vecincia Grassi, Sue Hall, Dianne Hickman, Marlaime Kline, Lynne Little

and Gail Malley. Back row (from left): Kathleen Neary, Marilyn O'Donnell, Renata Pagliaro, Martha Policastro, Gail Rasmussen, Linda Stoller, Kathy Vaughan, Richard Wilson, Carolynne Young, and Thomas Bennis.

20 Flight Attendants Join Company Ranks

Twenty flight attendants — including two men — began their airline careers July 28 when they were graduated from Hughes Airwest's training center.

They join more than 400 other Hughes Airwest stewards and stewardesses flying for the airline.

Graduation ceremonies were held in conjunction with ground-breaking for the company's new headquarters complex. They were conducted in a 'borrowed' nearly completed building on the construction site.

Irving Tague, vice president and general manager, and Raymond Holliday, member of the board of directors of the airline, participated in the ceremonies.

Thomas M. Bennis, Van Nuys, Calif., was the outstanding graduate. He and fellow graduate Richard C. Wilson, Menlo Park, Calif., bring to three the number of stewards flying for Hughes Airwest.



SPECIAL PINNINGS — Two of the graduating flight attendants have special connections in the airline industry. Catherine Dollarhide (left) was pinned by her husband, Rockney, a Trans World Airlines in-flight service manager. Kathy Vaughan received her wings from her father, Don, Hughes Airwest's Chico station manager.

Showplace Headquarters

(Continued From Page 3)

Operations 41,000 square feet of office space in another "T" shaped building 184 feet long and 104 feet wide. This structure will house the airline's 24-hour-a-day reservations and flight control functions.

Architecture Reflects a contemporary California regional theme; massive use of redwood in exposed beam ceilings, exterior and interior detailing; semi-transparent stains in earth tones for architectural unity; bronze-tinted windows throughout, wrapping around the corners of the top floors.

All mechanical systems are concealed behind roof forms to provide an unbroken, gently sloping profile. Roofing will be fire-resistant split shake shingles.

The separate lobbies of the heavily timbered, textured redwood buildings will be joined by a trellised walkway connecting to an outdoor dining deck overlooking one of the site's many wooded ravines. Footpaths will connect other outdoor areas.

Lobby Treatment Monumental staircases with lofty, two-story-high entries extending the width of the buildings.

Parking Series of parking alcoves created for about 500 cars by extensive landscaping to eliminate large expanses of asphalt.

Landscaping Basic landscaping design concept is based on movement of vehicles, pedestrians and servicing.

A wall of some 150 poplar trees will line both sides of the main roadway through the development. More than 100 redwood, eucalyptus and evergreen trees will encircle the structures in the complex. Sterilized (fruitless) olive trees will create the parking alcoves. Focal point of the parking area will be a grove of 15 pepper trees, through which pedestrian walkways will lead to a fountain and large chrome cube sculpture.

Occupancy Planned for April, 1973.

Architect Matt Copenhaver, A.I.A., of The Copenhaver-Belz Association, San Francisco, Calif.

Architect's Statement "The challenge of designing a unique development high on top of a private knoll has been met by the use of native materials, low-silhouette buildings — a complete departure from the usual materials and masses used in other office developments.

"The character, augmented by the many hand-crafted details of the buildings, is thus established to create an identity and independence making the new Hughes Airwest headquarters a landmark rather than just another large office building."

Site Landscaping POD Landscape Architecture, Orange, Calif.

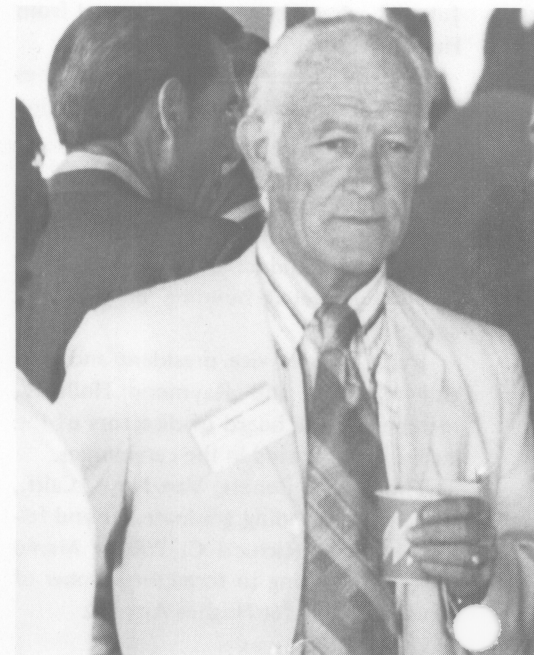
Interior Designer Rogers Associates, San Francisco, Calif.

Builder Interland Corporation, Santa Clara, Calif.

Lease Negotiated for Hughes Airwest by Grubb & Ellis Co., Realtors, San Francisco, Calif.



EASY DOES IT — Board member Frank W. Gay carefully pinned new hostess wings on Gail Rasmusson. Graduation of Hughes Airwest's 20 newest flight attendants was held in conjunction with the groundbreaking.



CONVERSATION — San Mateo Mayor John M. Conroy executive vice president of the San Mateo Chamber of Commerce coffee together at the reception prior to the day's



GUEST SPEAKER — Board member Raymond Holliday was the main speaker for the flight attendant ceremonies. Members of

the Hughes Airwest board of directors are standing on the left.



n J. Murray Jr. (left) and Ken Brown, member of Commerce, enjoyed a cup of activities.



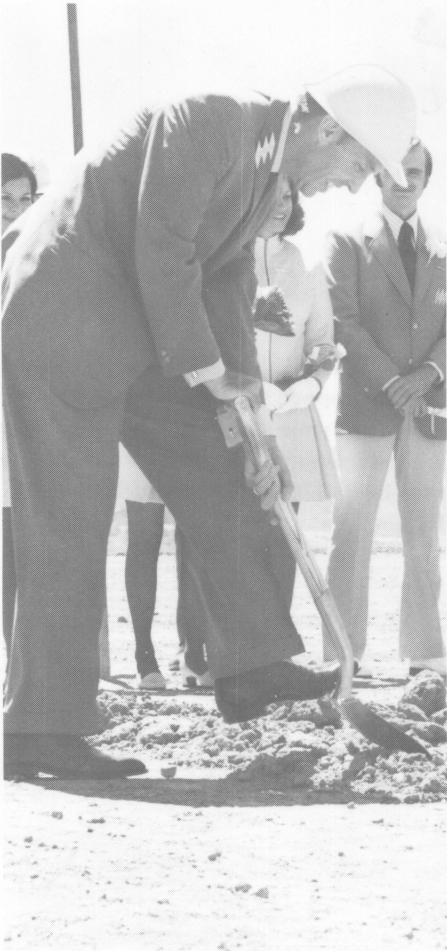
RECEPTION — Coffee, soft drinks and champagne were served to guests at the reception that preceded graduation and groundbreaking ceremonies.



MARIACHI MUSIC – The 'Pearls of Jalisco' Mariachi Band from San Jose provided entertainment for the ceremonies (top). The national flags of the United States, Canada and Mexico as

well as the company's new corporate flag provided the backdrop for the groundbreaking. Board member Calvin J. Collier Jr. took his turn at breaking the ground (bottom).





PICTURE DAY — If there is one thing that attracts photographers more than a groundbreaking, it's pretty girls. Hughes Airwest had both. Taking his turn with the shovel is director Frank W. Gay (above). The girls (lower right) are some of the company's newest flight attendants. They are (from left) Lynne Little, Marlaine Kline, Dianne Hickman, Sue Hall, Jayne Glover, Deedra Ditchman (hidden) and Catherine Dollarhide.

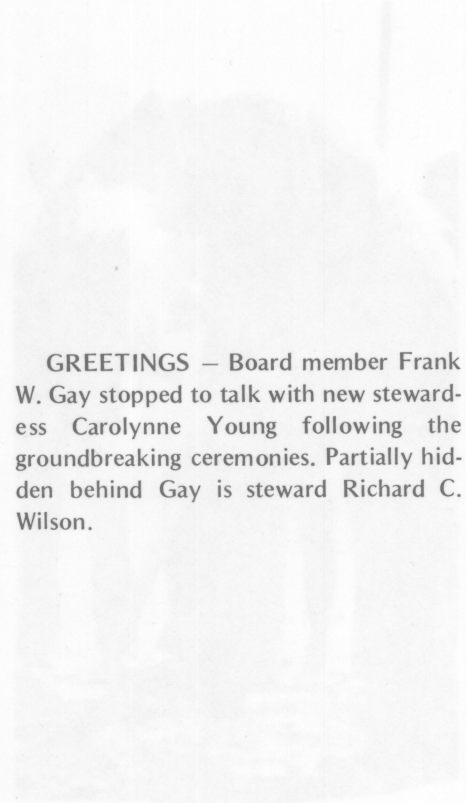


HUGHES AIRWEST

Published for employes and families of Hughes Airwest by the Public Relations Department International Airport San Francisco, Ca. 94128 Ken Jensen, editor



GREETINGS — Board member Frank W. Gay stopped to talk with new stewardess Carolynne Young following the groundbreaking ceremonies. Partially hidden behind Gay is steward Richard C. Wilson.



FACE TO FACE — Members of the Board of directors formed a reception line to greet each of the new flight attendants. Above are (from left) Park Myers, Martha Policastro, Kathleen Neary and Catherine Dollarhide.



CROWD — More than 200 business, civic and governmental leaders and friends and relatives of the new flight attendants joined the company's top management at the groundbreaking and graduation ceremonies.





GOES IT ALONE — Official speechmaking was too dull for 3-year-old Tommy Minto who decided to hold his own ground-breaking in the parking lot of the new facility. Duffy, a Welch

Corgi, was the only audience Tommy needed for his impromptu ceremony. Tommy is the son of Fay Minto, secretary in the sales department.