

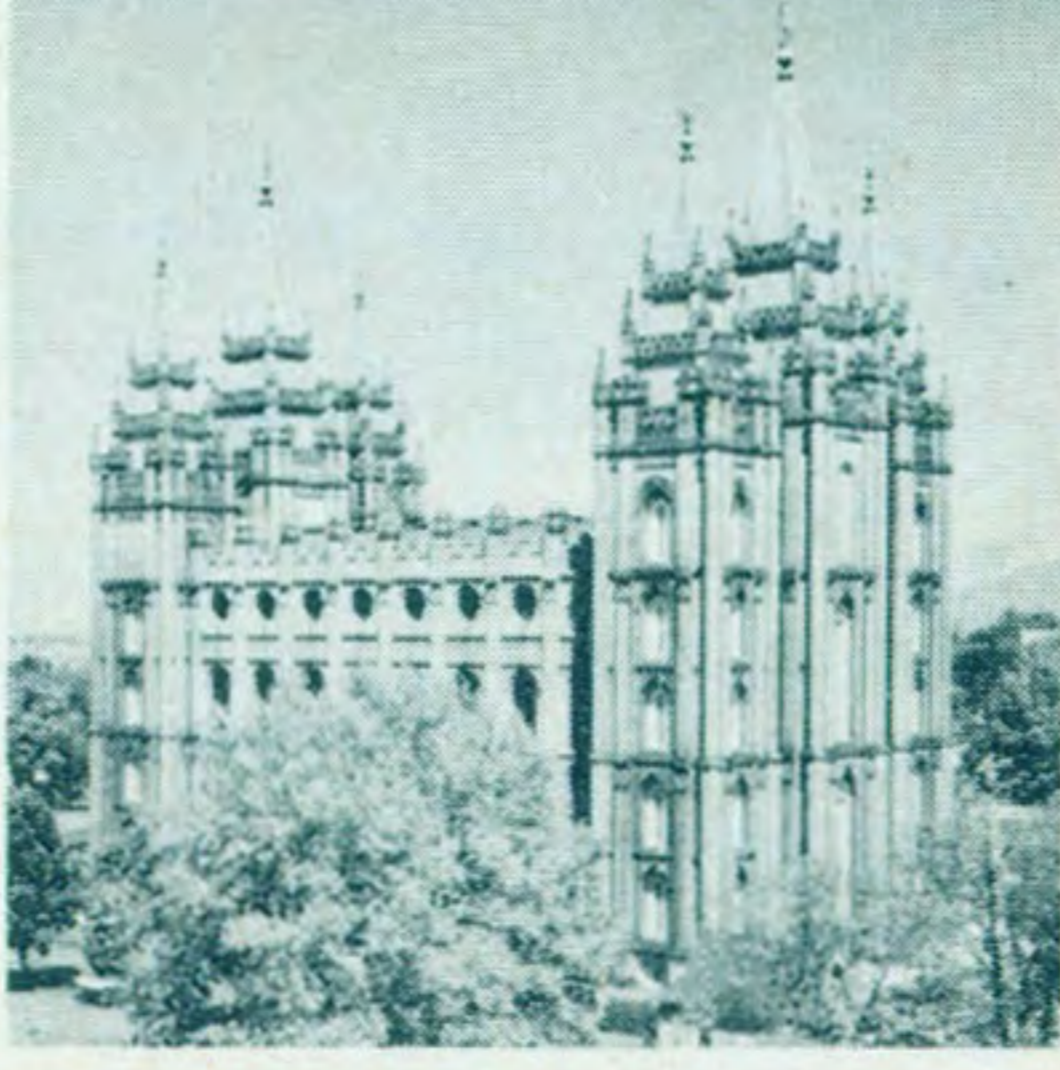
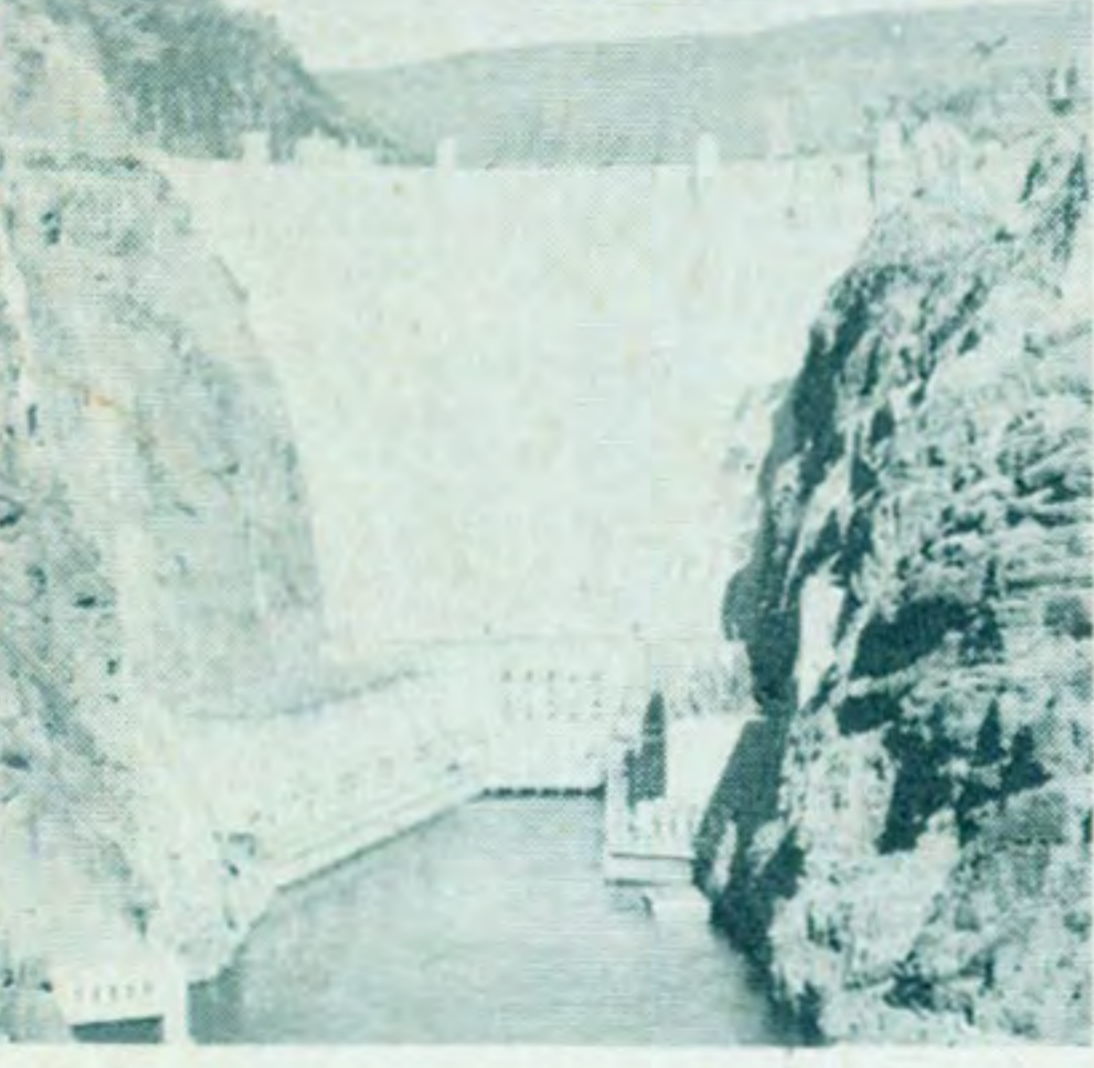
# BONANZA

## AIR LINES



**BONANZALAND**  
**U.S.A.**

**BONANZALAND**  
**U.S.A.**



**BONANZALAND**  
**U.S.A.**

**Serving the Sunny Southwest...**  
**ARIZONA - CALIFORNIA - NEVADA - UTAH**

# BONANZA

FIRST ALL JET-POWERED  
AIRLINE IN AMERICA

# BONANZA

FLIES YOU TO THE RESORTS

ONE WAY FIRST CLASS FARES

	Apple Valley	Blythe	Burbank	Cedar City	El Centro	Flagstaff	Grand Canyon	Kingman	Las Vegas	Los Angeles
BLYTHE	17.95									
BURBANK	9.75	17.20								
CEDAR CITY		35.10	43.00							
EL CENTRO	22.70	29.45	16.60	39.50						
FLAGSTAFF	30.75	24.20	31.90	16.90	28.20					
GRAND CANYON	32.25	24.50	32.40	14.05	28.65	5.35				
KINGMAN	19.80	25.90	27.35		30.05	13.30	14.85			
LAS VEGAS	13.45	29.30	21.10		34.05	19.35	20.80	8.40		
LOS ANGELES	9.75	17.20	4.70	43.00	16.60	31.90	32.40	27.35	21.10	
ONTARIO	5.30	14.75	6.55	43.00	19.55	31.90	32.40	22.95	16.60	6.55
PAGE		30.85	38.65	13.00	34.95	11.90	8.70			38.65
PALM SPRINGS - INDIO	12.30	9.00	11.60	40.45	24.50	29.40	29.85	30.00	23.70	11.60
PHOENIX	27.35	13.70	27.35	23.75	17.85	12.00	13.10	14.30	20.60	27.35
PRESCOTT	26.20	19.55	27.35	17.70	23.70	6.55	7.05	8.80	14.80	27.35
RENO	34.55	47.20	34.55		47.50	43.75	45.20	32.85	26.50	34.55
RIVERSIDE	5.30	14.75	6.55	43.00	19.55	31.90	32.40	22.95	16.60	6.55
SALT LAKE CITY		48.65	58.80	17.85	52.85	32.80	29.90			58.80
SAN DIEGO	16.95	25.45	10.35	43.00	9.45	31.90	32.40	34.15	28.30	10.35
SANTA ANA - LAGUNA BEACH	12.40	19.90	6.35	43.00	12.35	31.90	32.40	30.15	23.80	6.35
YUMA	27.60	25.75	20.50	34.75	6.95	24.10	24.15	25.85	31.90	20.50

	Ontario	Page	Palm Springs Indio	Phoenix	Prescott	Reno	Riverside	Salt Lake City	San Diego	Santa Ana
PAGE	38.65									
PALM SPRINGS - INDIO	9.10	36.20								
PHOENIX	25.00	19.35	19.00							
PRESCOTT	27.35	13.30	24.85	7.90						
RENO	34.55		41.55	44.60	39.20					
RIVERSIDE		38.65	9.10	25.00	27.35	34.55				
SALT LAKE CITY	58.80	29.40	53.95	37.05	33.45		58.80			
SAN DIEGO	13.75	38.65	18.75	23.30	27.35	42.80	13.75	58.35		
SANTA ANA - LAGUNA BEACH	9.20	38.65	14.25	25.60	27.35	37.20	9.20	58.80	8.80	
YUMA	24.40	31.35	29.40	14.15	19.10	52.40	24.40	49.10	13.15	17.25

(All fares subject to 10% Federal Transportation Tax)

# BONANZA

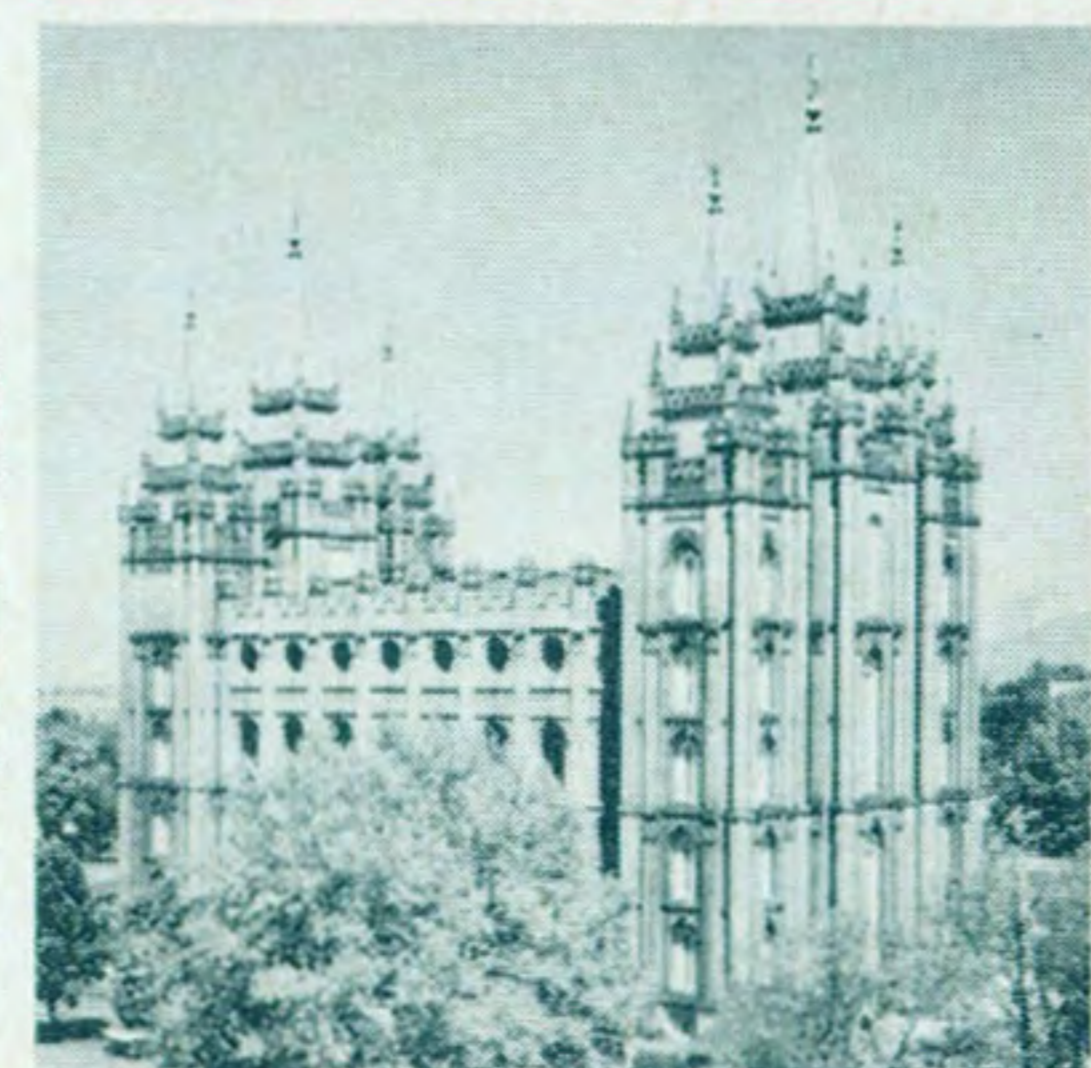
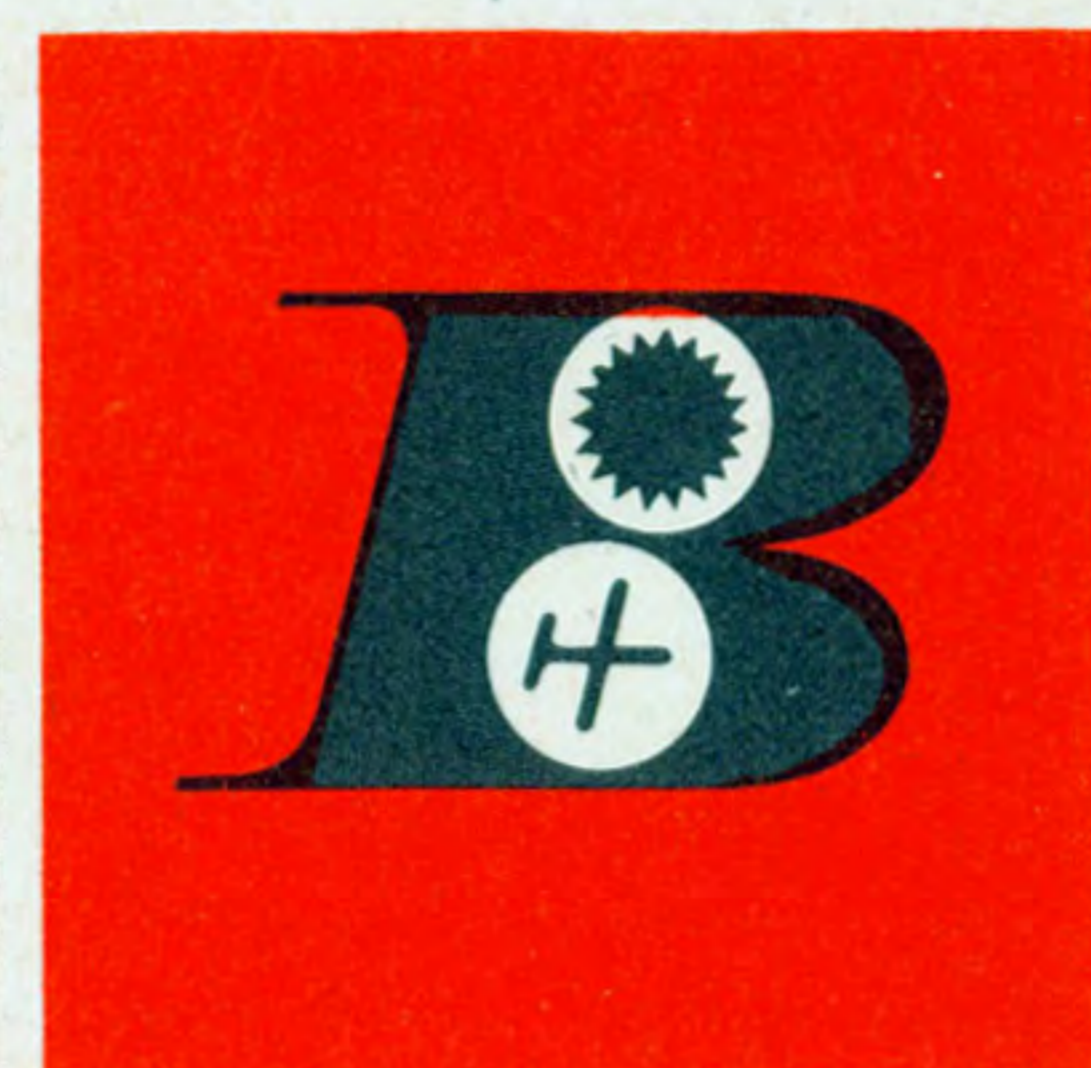
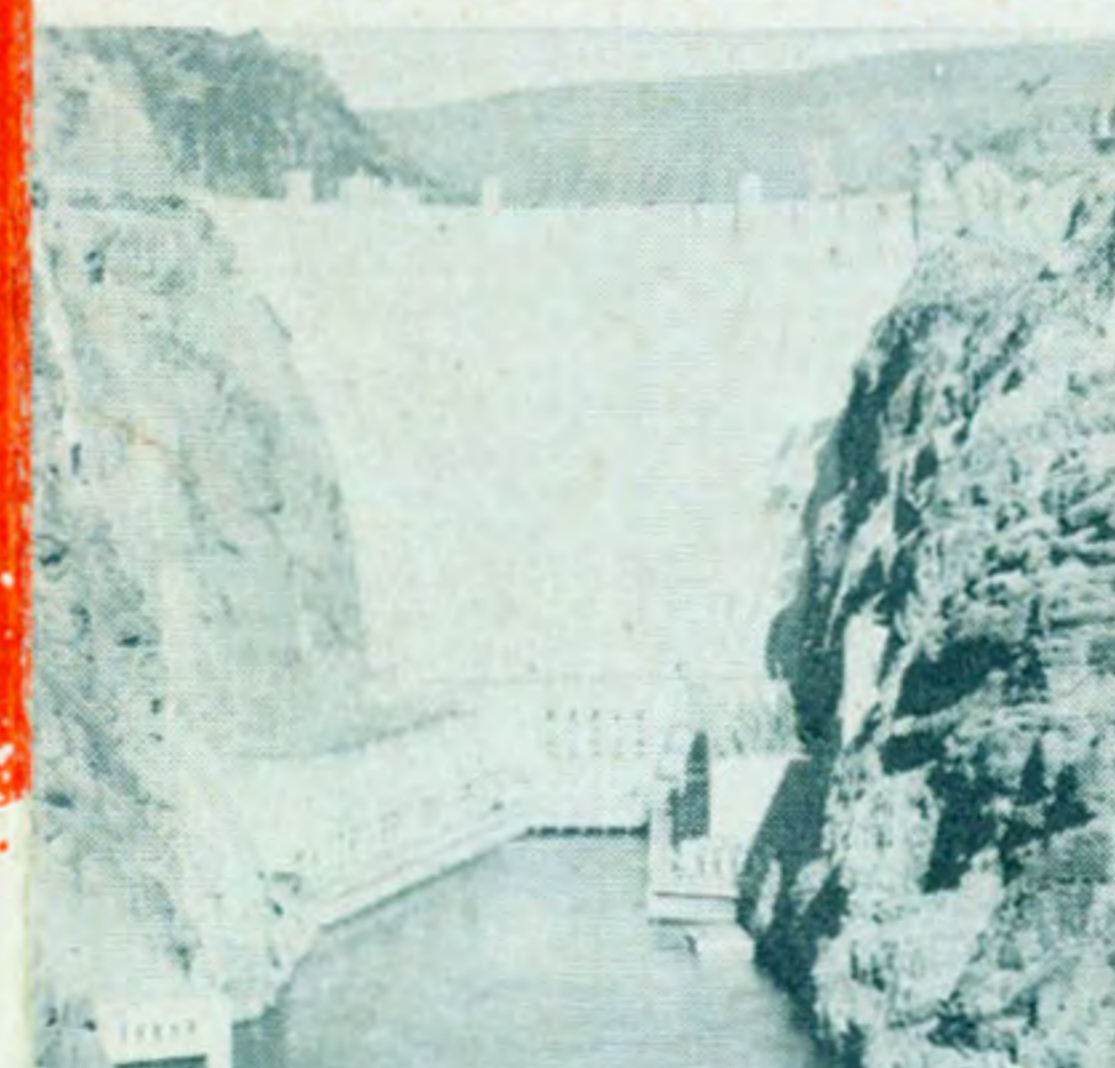
AIR LINES



BONANZALAND  
U.S.A.



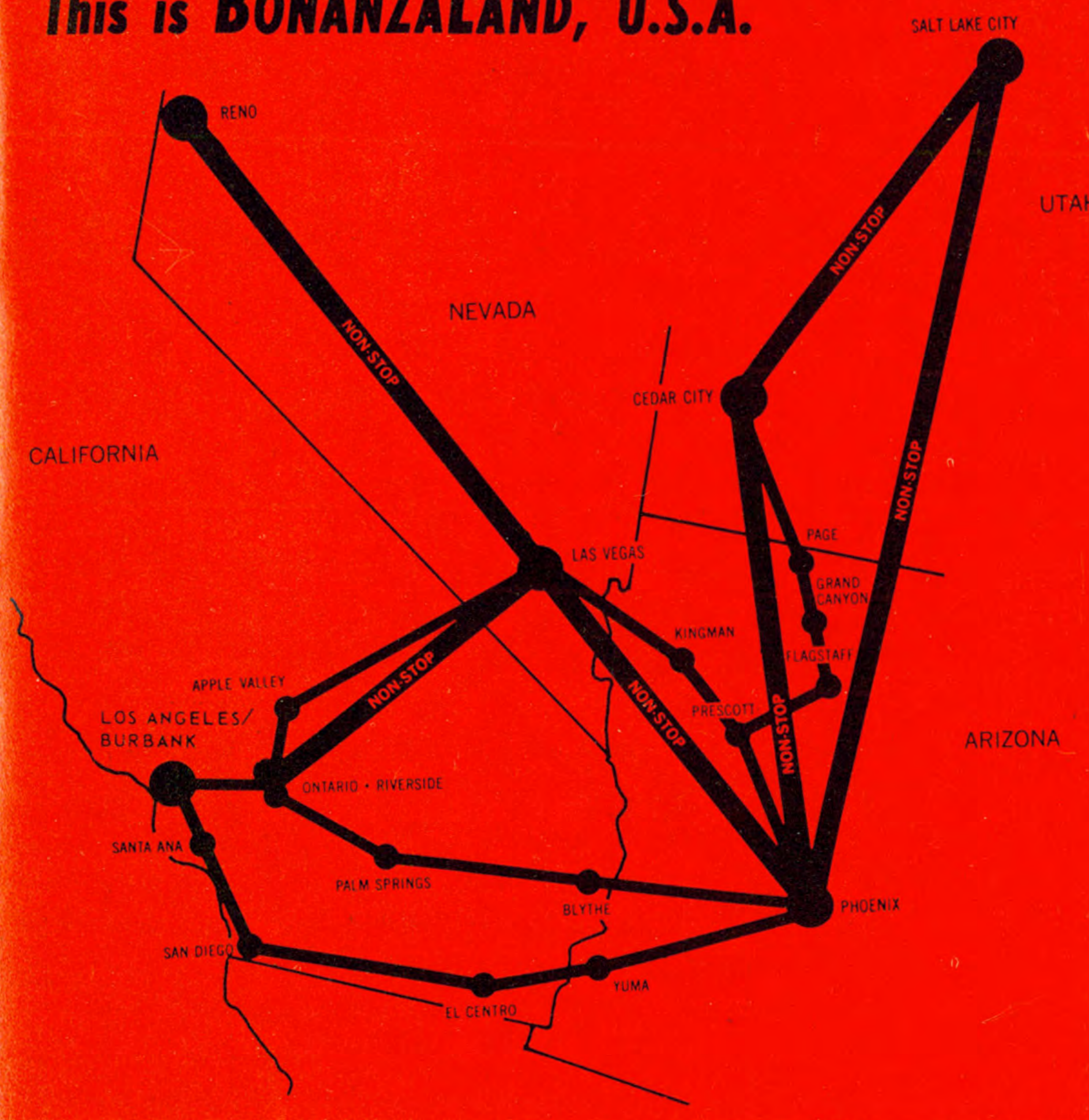
BONANZALAND  
U.S.A.



BONANZALAND  
U.S.A.

EFFECTIVE SEPT. 24, 1961

This is BONANZALAND, U.S.A.



IF YOU ARE UNDER **22** YEARS OF AGE  
FLY BONANZA FOR

# HALF FARE

BETWEEN MOST CITIES IN BONANZALAND

## MAKE RESERVATIONS ... ANYTIME!

ANOTHER FIRST FROM BONANZA • THE AIRLINE THAT WAS  
FIRST IN THE NATION TO OFFER ALL JET-POWERED SERVICE

# BONANZA'S NEW LOW ROUND TRIP FARES

Fly Bonanza for Business and Pleasure! Save TIME and MONEY! New low Round Trip Fares to Major Cities and Sun and Fun Spots in the Great Southwest make Bonanza THE Airline for both the busy man and the Vacationer!

### LOWEST ROUND-TRIP FARES IN EXISTENCE

BETWEEN	ROUND TRIP FARE
Apple Valley and Las Vegas	\$20.00 (2)
*Blythe and Las Vegas	41.00 (2)
*Blythe and Phoenix	21.00 (1)
*Cedar City and Phoenix	36.00 (1)
Cedar City and Salt Lake City	27.00 (1)
El Centro and Phoenix	27.00 (1)
*Flagstaff and Salt Lake City	50.00 (1)
Grand Canyon and Phoenix	19.00 (2)
Kingman and Las Vegas	13.00 (1)
Kingman and Phoenix	22.00 (1)
Las Vegas and Los Angeles	26.00 (2)
Las Vegas and Ontario	24.00 (2)
*Las Vegas and Phoenix	30.00 (2)
Las Vegas and Prescott	22.00 (1)
Las Vegas and Reno	40.10 (3)
Las Vegas and Riverside	24.00 (2)
*Las Vegas and San Diego	39.00 (2)
*Las Vegas and Santa Ana	33.00 (2)
Las Vegas and Yuma	46.00 (2)
Los Angeles and Phoenix	41.00 (1)
Los Angeles and Yuma	31.00 (1)
Ontario and Phoenix	38.00 (1)
Page and Salt Lake City	44.00 (1)
Palm Springs and Phoenix	27.00 (2)
Phoenix and Riverside	38.00 (1)
Phoenix and Reno	64.00 (2)
Phoenix and Salt Lake City	56.00 (1)
Phoenix and San Diego	35.00 (1)
Phoenix and Santa Ana	39.00 (1)
Phoenix and Yuma	22.00 (1)
Reno and Yuma	75.00 (2)
*San Diego and Yuma	20.00 (1)
*Santa Ana and Yuma	26.00 (1)

\*Effective October 1, 1961, subject to CAB approval.

1  
7-day return limit. Applicable all days. May be combined with other fares.

2  
10-day return limit. Applicable daily except all day Friday and Sunday afternoon. May not be combined with other fares.

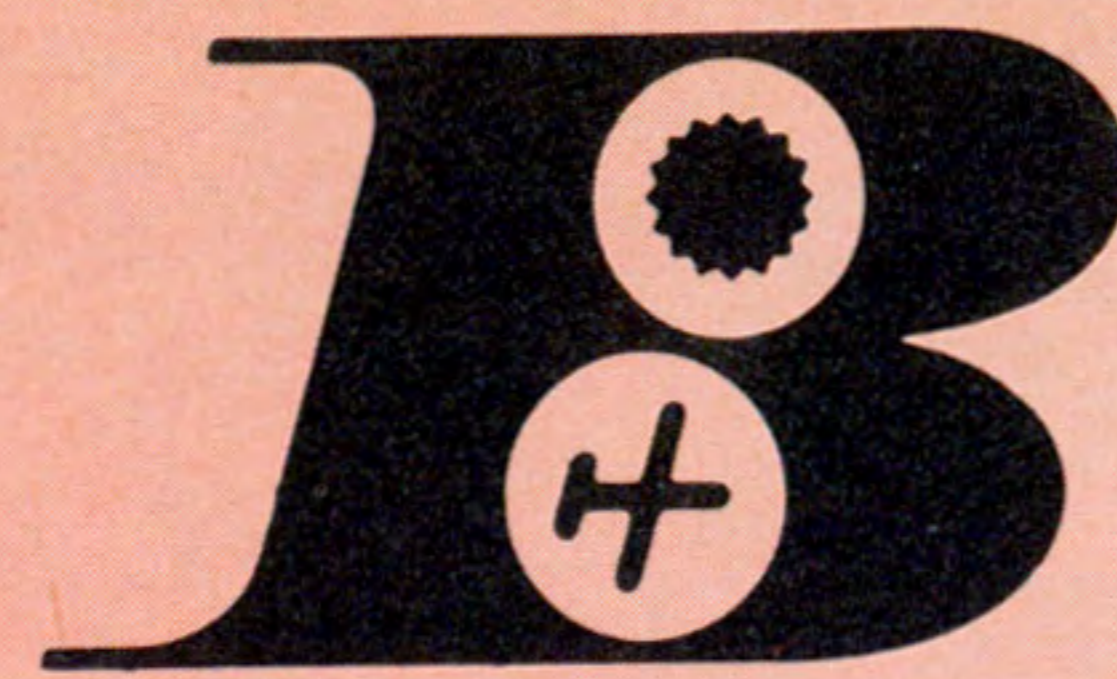
3  
10-day return limit. Applicable daily except Friday and Sunday. May be combined with other fares.

Serving the Sunny Southwest...  
ARIZONA - CALIFORNIA - NEVADA - UTAH

**BONANZA** FIRST ALL JET-POWERED  
AIRLINE IN AMERICA

Effective Sept. 24, 1961

**BONANZA AIR LINES**



**SYSTEM SCHEDULE**

**ALL FLIGHTS  
SILVER DART  
JET-PROP  
EQUIPMENT**

**SALT LAKE CITY / RENO / LAS VEGAS - PHOENIX**

READ DOWN

READ UP

1	61	31	5	63	65	33	FLIGHT NUMBER	62	32	2	64	4	34	66	6	City Codes
	7:30			4:00	5:30		Lv . SALT LAKE CITY . . . . . MST Ar	11:10			2:15			9:38		SLC
	8:38				6:38		Lv . Cedar City . . . . . Lv	10:05						8:33		CDC
					7:16		Lv . Page (Glen Canyon Dam) . . . . . Lv	9:10								PGA
					8:00		Lv . Grand Canyon . . . . . Lv	8:34								VLE
					8:26		Lv . Flagstaff† . . . . . MST Lv	8:01								FLG
		9:35				7:10	Lv . RENO . . . . . PST Ar		9:05				6:35			RNO
		11:07				8:42	Ar . LAS VEGAS . . . . . PST Lv		7:30				5:00			LAS
6:30			11:25		2:00		Lv . LAS VEGAS . . . . . PST Ar			11:04		2:20	4:40		10:23	LAS
8:02						10:32	Lv . Kingman . . . . . MST Lv			11:35					10:54	IGM
8:34							Lv . Prescott . . . . . Lv	7:32							10:22	PRC
9:03	10:08	1:35		4:10	6:13	9:18	Ar . PHOENIX† . . . . . MST Lv	7:00		10:45	12:00	2:10	4:30	7:00	9:50	PHX

**PHOENIX / LAS VEGAS - LOS ANGELES**

51	21 Ex Sun	45	53	23	57	47	43	55 Ex Sat & Sun	25	FLIGHT NUMBER	22 Ex Sun	46	42 Ex Sun	24	52	54	48	44	26	56 Ex Sat & Sun	58	City Codes	
	7:20	9:40		2:00		4:40			8:40	Lv . PHOENIX . . . . . MST Ar	10:34	1:07		2:45			8:06		10:30				PHX
	8:14			2:54					9:34	Lv . Yuma . . . . . MST Lv	9:46			1:56					9:41				YUM
	7:46			2:26					9:06	Lv . El Centro . . . . . PST Lv	8:21			12:31					8:16				IPL
	8:22			3:02					9:42	Lv . SAN DIEGO . . . . . Lv	7:37			11:47					7:32				SAN
	8:55			3:35					10:15	Lv . Santa Ana-Laguna Beach . . . . . Lv	7:04			11:14					6:59				SNA
		9:28				4:28				Lv . Blythe . . . . . Lv		11:22							6:21				BLH
		10:11				5:11				Lv . Palm Springs-Indio . . . . . Lv		10:46							5:45				PSP
7:00			1:30	4:00						Lv . LAS VEGAS . . . . . Ar				1:20	5:49						10:19		LAS
7:48								7:40		Lv . Apple Valley . . . . . Lv				12:37					Ar 7:33				APV
8:14						5:37		8:04		Lv . Riverside . . . . . Lv				12:13	4:58				7:12				RAL
8:37	9:15	10:38	2:25	4:55				8:27		Lv . Ontario . . . . . Lv	10:13			11:45	4:30				6:35	6:45	9:28		ONT
		11:01	2:48	3:55	5:18	6:00				Ar . LOS ANGELES (Intl.) . . . . . PST Lv	6:40	9:45		10:50							9:00		LAX
	9:30						5:45			Lv . LOS ANGELES (Intl.) . . . . . PST Ar			10:05						6:20				LAX
	9:45						6:00			Ar . Burbank . . . . . PST Lv			9:50						6:05				BUR

All flights operate daily except as otherwise noted

LEGEND

†—No local passengers between Flagstaff and Phoenix  
MST—Mountain Standard Time AM—Light Face  
PST—Pacific Standard Time PM—Bold Face



CHARGE **BONANZA** TRAVEL TO **Diners**

IMPORTANT NOTICE

On October 14, 1961, no airline flights will be operated during the hours of 9 A.M. to 9 P.M. P.S.T. (10 A.M. to 10 P.M. M.S.T.), due to the operation of Sky-Shield II by the North American Air Defense Command. Check with your Bonanza Agent for Bonanza flights which may be scheduled before or after these times.

**RESERVATIONS & INFORMATION**

CITY TICKET OFFICES

Las Vegas, Nev.	Sahara Hotel Lobby	REgent 3-1818
Los Angeles, Cal.	9365 Wilshire Blvd. Beverly Hills	CRestview 5-4133 BRadshaw 2-9366
Phoenix, Ariz.	Adams Hotel Lobby	252-6021
Reno, Nev.	Riverside Hotel Lobby	FAirview 9-0001
Salt Lake City, Utah	Hotel Utah Lobby	DAvis 8-8656

AIRPORTS - RESERVATIONS/AIR FREIGHT TELEPHONE

CITY	AIRPORT NAME	RESERVATION / AIR FREIGHT TELEPHONE
Apple Valley, Cal.	Apple Valley Municipal	Apple Valley 7-7209 11131
Burbank, Cal.	Lockheed Air Terminal	*Zenith 2-1651 AF-TRiangle 7-6171
Cedar City, Utah	Municipal	JUniper 6-9741
El Centro, Cal.	Imperial County	ELgin 2-4218
Flagstaff, Ariz.	Municipal	PRospect 4-7373
Glendale, Cal.	Lockheed Air Terminal	*Zenith 2-1651 AF-TRiangle 7-6171
Grand Canyon, Ariz.	Valle	Valle 3
Indio, Cal.	Palm Springs	32-55053
Kingman, Ariz.	Municipal	SKYline 3-3630
Laguna Beach, Cal.	Orange County	KIMberly 5-1146
Las Vegas, Nev.	McCarran Field	REgent 3-1818 AF-REgent 3-2704
Los Angeles, Cal.	L.A. International	CRestview 5-4133 BRadshaw 2-9366 AF-SPring 6-1260 AF-SPring 6-1430
Ontario, Cal.	Ontario International	YUKon 6-6724 AF-YUKon 4-3381 AF-YUKon 4-3382
Page, Ariz.	Glen Canyon	MIDway 5-2404
Palm Springs, Cal.	Palm Springs	32-55053
Phoenix, Ariz.	Sky Harbor	252-6021 AF-BRidge 5-4502 HIckory 5-2812
Prescott, Ariz.	Municipal	FAirview 9-0001
Reno, Nev.	Municipal	OVERland 4-6221
Riverside, Cal.	Municipal	AF-OVERland 8-6221
Salt Lake City, Utah	Municipal	DAvis 8-8656
San Diego, Cal.	Lindbergh Field	CYpress 6-6144
Santa Ana, Cal.	Orange County	KIMberly 5-1146
Victorville, Cal.	Apple Valley	Apple Valley 7-7209
Yuma, Ariz.	Yuma County	SUNset 2-1871

Reference Notes —  
AF- indicates telephone number for Air Freight information. When separate number is not listed, Air Freight information may be obtained by calling Reservation telephone number.  
\* Dial operator and ask for Zenith number listed.

PASSENGER INFORMATION

**Reservations**—Reservations must be made in advance and are tentative until tickets are purchased. Bonanza Air Lines reserves the right to cancel the reservation of any passenger who fails to present himself at the Bonanza Air Lines Airport ticket office at least 10 minutes before scheduled departure of flight on which his reservation was made.

**Re-confirmation**—All stopover or return passengers must re-confirm their reservations at least six hours prior to flight time. Contact nearest Bonanza office.

**Schedules**—Schedules show the time at which planes may be expected to arrive at or depart from stations, and to connect with other planes, but Bonanza Air Lines will not be responsible for consequences arising from delays or from errors in the printed schedule. Times shown are subject to change without notice.

**Baggage**—40 pounds of personal baggage will be carried free on one ticket. Baggage in excess of 40 pounds may be carried at established excess baggage rates.

**Children's Fares**—One child under two years of age, not occupying a seat, will be carried free with each accompanying passenger 12 years of age or older. Children two years of age and under 12 years of age will be charged one-half of applicable one-way adult fare, or \$4.70, whichever is greater.